

BEARING CAP MODIFICATION INSTRUCTIONS

Reelmaster® 3100-D Sidewinder

1. Before proceeding with repair, stop engine and remove the key from the ignition switch.
2. Drill four .531" (17/32") (13.5mm) holes inboard of existing holes on the Carrier Assembly. See layout in Fig. 2.
3. Install Bearing Caps (95-8609) and related hardware to Carrier Assembly.

Note: You can also use the new Bearing Cap as a template to mark the holes to be drilled. Simply position the new Bearing Cap 1/4" (6.4mm) to the inside of existing Bearing Cap and mark the holes for drilling.

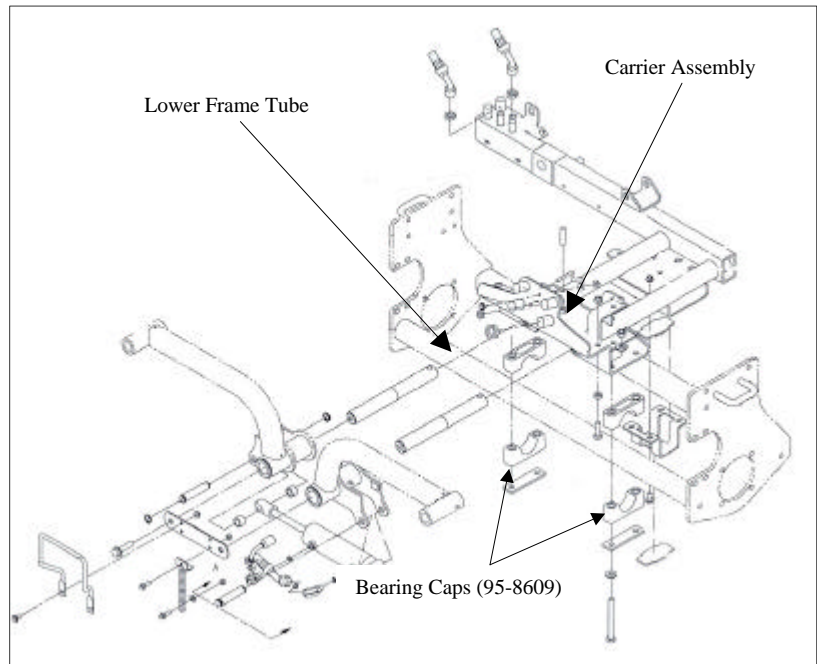


Fig. 1

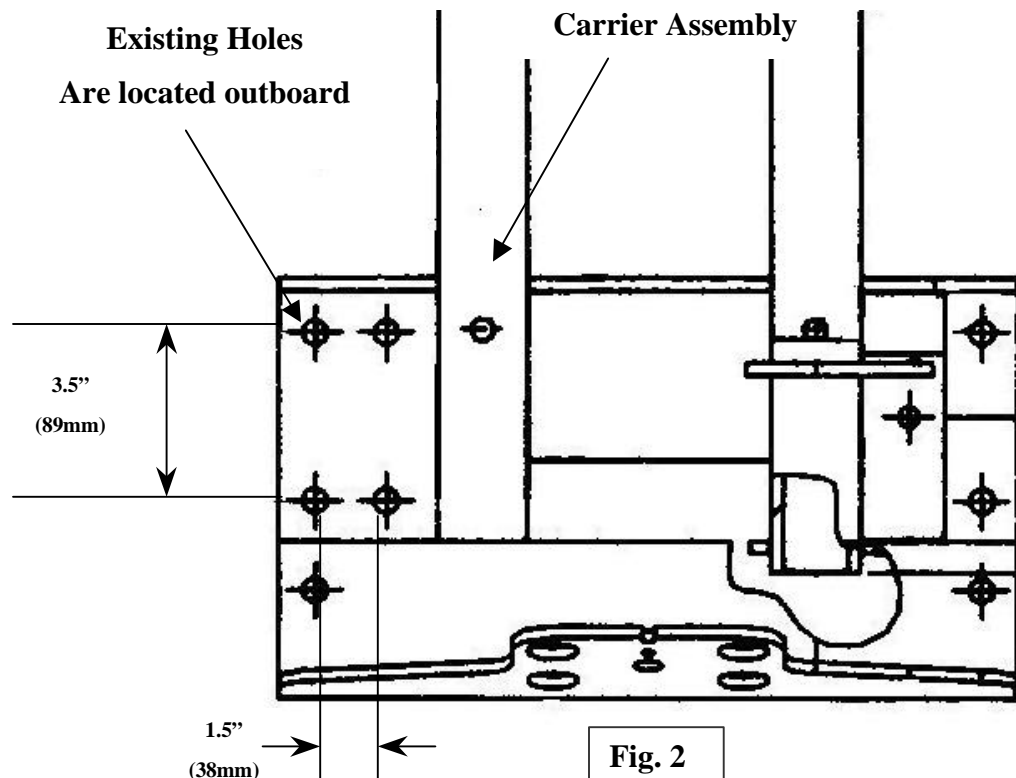


Fig. 2