



# Striping Kit

For 62"/72" Decks  
Model No. 30163

Form No. 3329-387

## Installation Instructions

### Loose Parts

**Note:** Use the chart below to identify parts used for assembly.

DESCRIPTION	QTY.	USE
Mounting bracket	8	Installing Mounting Bracket
Hex head screw, 5/16-18 x 3/4" (19 mm)	8	
Flat washer, 5/16"	8	
Retainer nut	8	
Wiper	1	Installing Wiper to Deck
Hex lock nut, 5/16-18	8	
Hex head screw, 5/16-18 x 3/4" (19 mm)	8	
Parts catalog	1	
Installation Instructions	1	Read before installing

### Modify Wiper

(For Deck Models 30551 & 30553 only)

- Using dimensions shown in figure 1, locate, mark and cut slot and drill holes in wiper for deck **Model 30551**. Use dimensions in figure 2 to locate, mark and cut slot in wiper for deck **Model 30553**. Note position of wiper and holes.

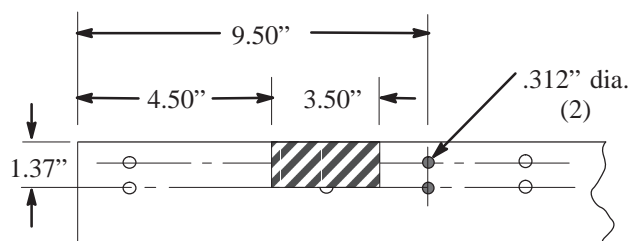


Figure 1

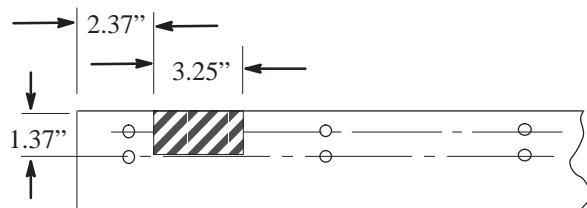
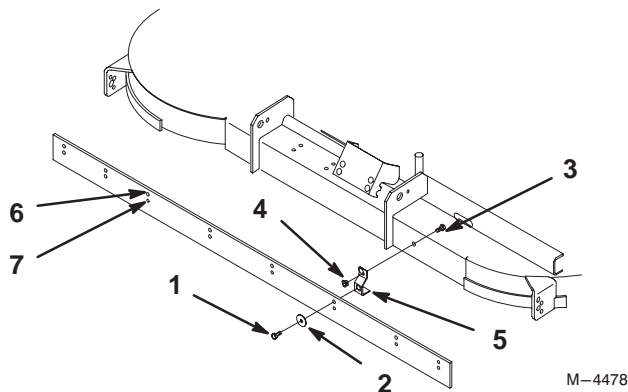


Figure 2

### Mounting Bracket Installation

- Install the retainer nuts in each of the mounting brackets. Refer to Installing Retainer nuts on page 2.
- Attach the mounting brackets (with retainer nuts assembled) into holes in wiper (Fig. 3) using the flat washers and 5/16-18 x 3/4" (19 mm) screws. Place the flat washers on the screws and insert the screws through the wiper into the retainer nuts. Align the brackets vertical to the wiper and tighten the screws (Fig. 5).

**Note:** Use the upper holes for greater striping effect and the lower holes for less effect.

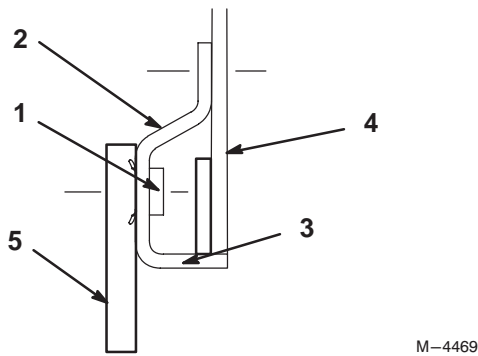


**Figure 3**

- |                                  |   |
|----------------------------------|---|
| 1. 5/16–18 x 3/4" (19 mm) screw  | 4. 5/16–18 lock nut                     |
| 2. Flat washer                   | 5. Mounting Bracket (With Retainer Nut) |
| 3. 5/16–1/8 x 3/4" (19 mm) screw | 6. Upper Holes                          |
|                                  | 7. Lower Holes                          |

## Installation of Wiper to Deck

1. Center the wiper, with the mounting brackets assembled, against the rear of the deck.
2. Position the lower leg of each mounting bracket under and up tight against the bottom lip of the rear deck wall (Fig. 4).
3. Clamp one end of wiper to deck in the correct location.



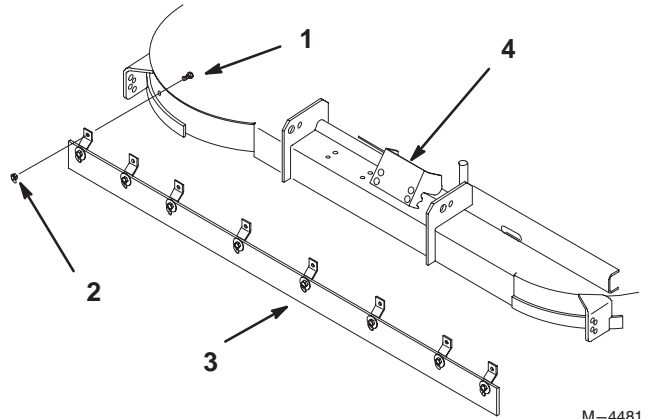
**Figure 4**

- |                           |              |
|---------------------------|--------------|
| 1. Retainer Nut Installed | 4. Deck Wall |
| 2. Mounting bracket       | 5. Wiper     |
| 3. Lower Leg              |              |

4. Starting from one end, use the mounting brackets as a template to drill 11/32 inch diameter holes in the deck (Fig. 5).

**Note:** Note starting from one end will eliminate any slack in wiper and follow the deck.

5. Secure in place with the 5/16–18 x 3/4" (19 mm) screws and 5/16–18 lock nuts. Install the screws in the deck with the heads on the inside and nuts to the outside as shown in Fig. 5.



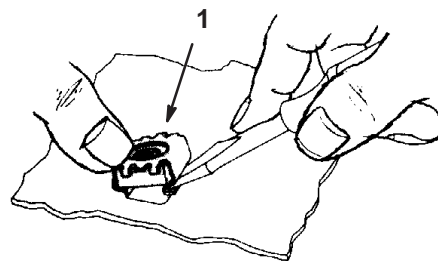
**Figure 5**

- |                                 |   |
|---------------------------------|---|
| 1. 5/16–18 x 3/4" (19 mm) screw | 3. Wiper with Mounting Brackets Installed |
| 2. 5/16–18 lock nut             | 4. Deck                                   |

## Installing Retainer Nuts

1. Install one retaining leg into the the square opening of mounting brackets (Fig. 6).
2. Push a screw driver into the other leg and insert retaining nut into square hole (Fig. 6).

**Note:** Note which side retainer nut is installed on in figure 4.



**Figure 6**

1. Retainer Nut