



Front Hitch Kit

Workman® GTX Series Utility Vehicles with Brush Guard

Model No. 07146

Installation Instructions

⚠ WARNING

CALIFORNIA Proposition 65 Warning

This product contains a chemical or chemicals known to the State of California to cause cancer, birth defects, or reproductive harm.

Installation

Loose Parts

Use the chart below to verify that all parts have been shipped.

Description	Qty.	Use
Front quick attachment	1	Install the kit.
Carriage bolt (5/16 x 1 inch)	2	
Carriage bolt (5/16 x 7/8 inch)	4	
Flange nut (5/16 inch)	6	
Hex-socket, button-head bolt	1	
Jam nut	1	
T-handle	1	

Note: Determine the left and right sides of the machine from the normal operating position.

1. Stop the machine on a level surface, set the parking brake, shut off the engine, and remove the key.
2. Remove and discard the 2 existing carriage bolts and 2 locknuts from the brush guard as shown in [Figure 1](#).



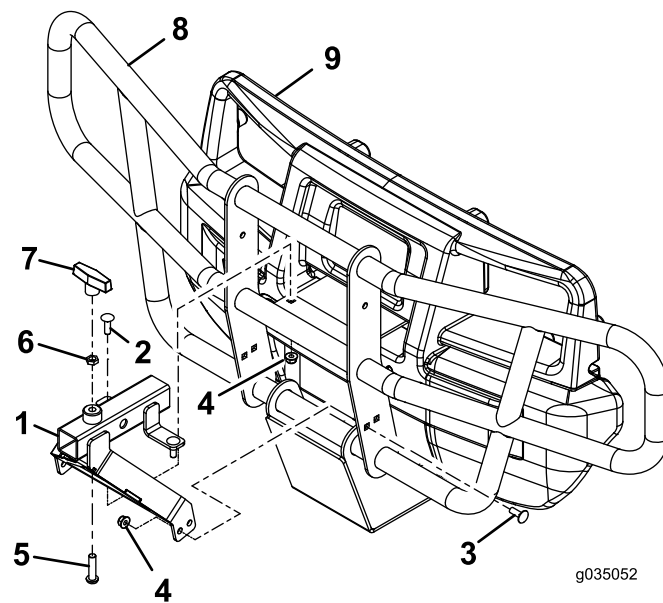


Figure 1

- | | | |
|------------------------------------|---------------------------------|----------------|
| 1. Front quick attachment | 4. Flange nut (5/16 inch) | 7. T-handle |
| 2. Carriage bolt (5/16 x 1 inch) | 5. Hex-socket, button-head bolt | 8. Brush guard |
| 3. Carriage bolt (5/16 x 7/8 inch) | 6. Jam nut | 9. Bumper |

-
3. Loosely install the front quick attachment with 2 carriage bolts (5/16 x 1 inch) and 2 flange nuts (5/16 inch) as shown in [Figure 1](#).
 4. Loosely install the front quick attachment with 4 carriage bolts (5/16 x 7/8 inch) and 4 flange nuts (5/16 inch) as shown in [Figure 1](#).
 5. Install the hex-socket, button-head bolt, jam nut, and T-handle ([Figure 1](#)).
 6. Torque the loose fasteners to 19.8 to 25.4 N·m (175 to 225 in-lb).