



Ball Picker Mounting Bracket Kit

Workman® GTX or MDX Series Utility Vehicles

Model No. 07157

Installation Instructions

⚠ WARNING

CALIFORNIA Proposition 65 Warning

This product contains a chemical or chemicals known to the State of California to cause cancer, birth defects, or reproductive harm.

Installation

Loose Parts

Use the chart below to verify that all parts have been shipped.

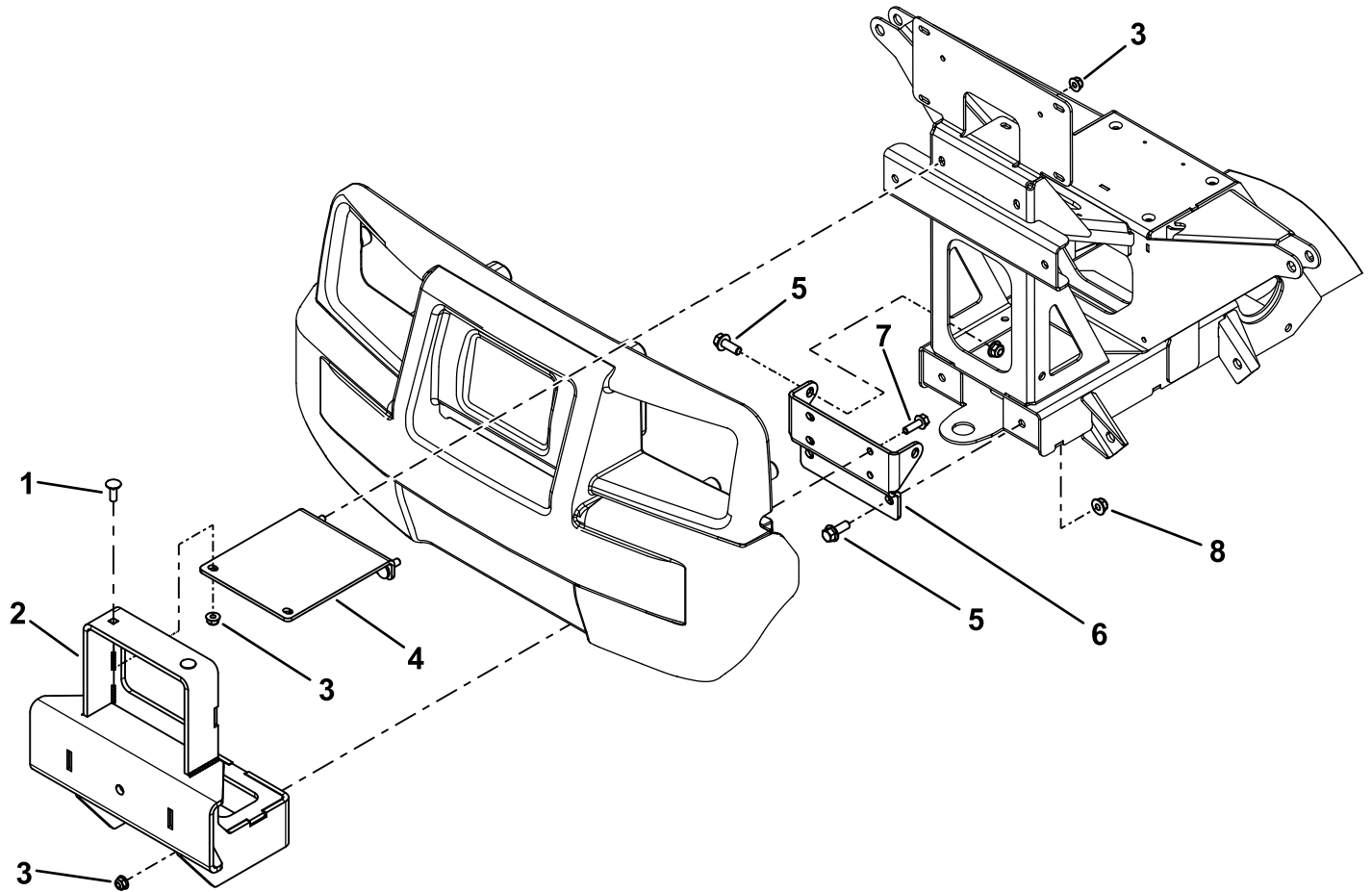
Description	Qty.	Use
Ball-picker mount	1	
Long brush-guard mount bracket (Gasoline GTX and Electric GTX models only)	1	
Short brush-guard mount bracket (MDX and MDX-D models only)	1	
Hex-head flange bolt (5/16 x 1 inch)	4	
Flange nut (5/16 inch)	8	
Carriage bolt (5/16 x 7/8 inch)	2	
Lower brush-guard bracket (MDX and MDX-D models only)	1	
Hex-head flange bolt—3/8 x 1 inch (MDX and MDX-D models only)	4	
Flange nut—3/8 inch (MDX and MDX-D models only)	4	
No parts required	—	
No parts required	—	
No parts required	—	

Note: Determine the left and right sides of the machine from the normal operating position.



For MDX and MDX-D Models

1. Stop the machine on a level surface, set the parking brake, shut off the engine, and remove the key.
2. Install the lower brush-guard mount bracket to the traction-unit frame with 4 hex-head flange bolts (3/8 x 1 inch) and 4 flange nuts (3/8 inch) as shown in [Figure 1](#).
3. Torque the fasteners to 37 to 45 N·m (27 to 33 ft-lb).
4. Loosely install the short brush-guard mount bracket to the traction-unit frame (through the bumper) with 2 flange nuts (5/16 inch) as shown in [Figure 1](#).
5. Loosely attach the ball-picker mount to the short brush-guard mount bracket with 2 carriage bolts (5/16 x 7/8 inch) and 2 flange nuts (5/16 inch) as shown in [Figure 1](#).
6. Loosely attach the ball-picker mount to the lower brush-guard mount bracket with 4 hex-head flange bolts (5/16 x 1 inch) and 4 flange nuts (5/16 inch) as shown in [Figure 1](#).
7. Torque the remaining fasteners to 19.8 to 25.4 N·m (175 to 225 in-lb).



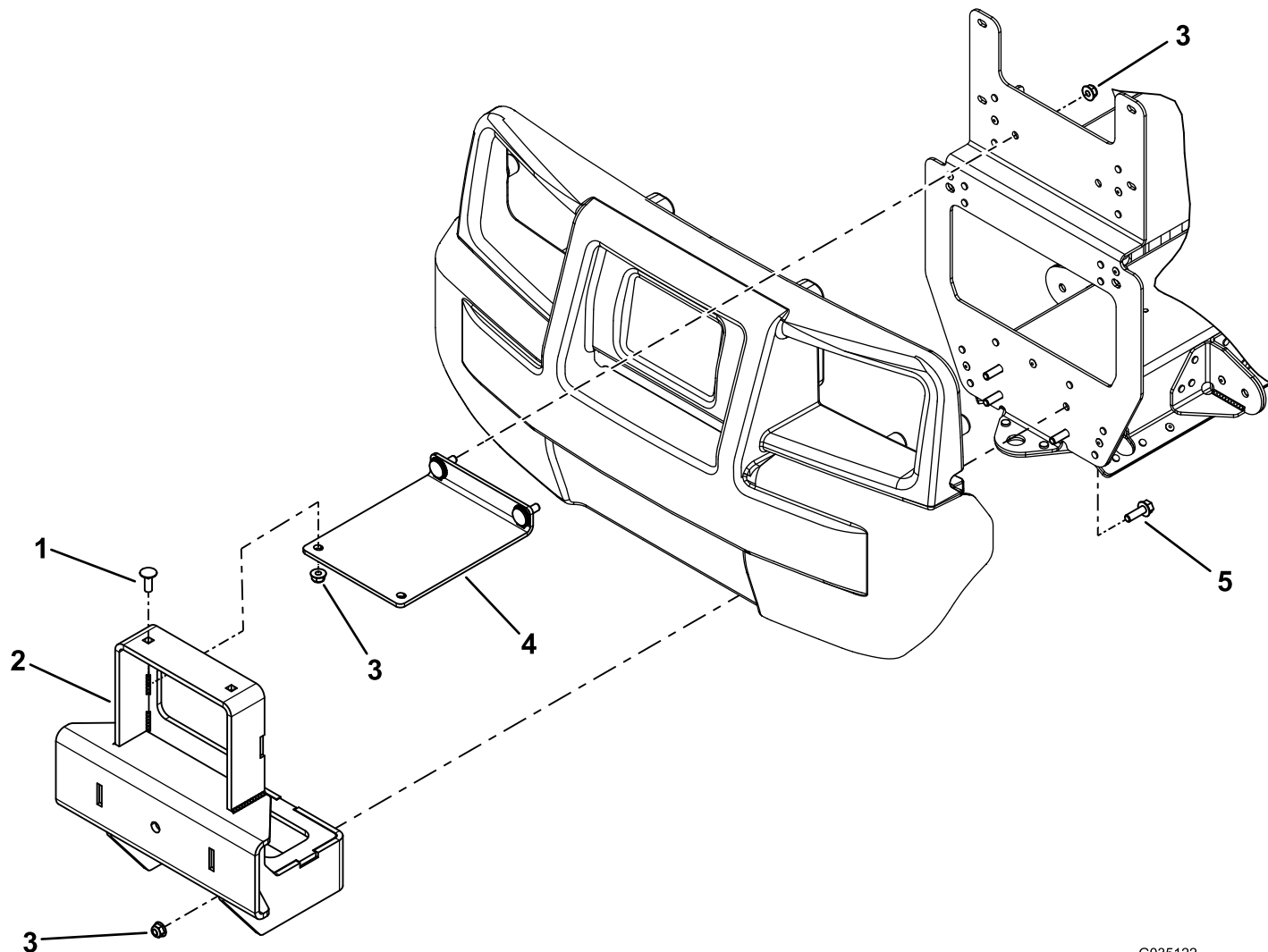
G035121

Figure 1

- | | |
|------------------------------------|---|
| 1. Carriage bolt (5/16 x 7/8 inch) | 5. Hex-head flange bolt (3/8 x 1 inch) |
| 2. Ball-picker mount | 6. Lower brush-guard mount bracket |
| 3. Flange nut (5/16 inch) | 7. Hex-head flange bolt (5/16 x 1 inch) |
| 4. Short brush-guard mount bracket | 8. Flange nut (3/8 inch) |

For Gasoline GTX and Electric GTX Models

1. Stop the machine on a level surface, set the parking brake, shut off the engine, and remove the key.
2. Loosely install the long brush-guard mount bracket to the traction-unit frame (through the bumper) with 2 hex-head flange bolts (5/16 x 1 inch) and 2 flange nuts (5/16 inch) as shown in [Figure 2](#).
3. Loosely install the ball-picker mount to the long brush-guard mount bracket with 2 carriage bolts (5/16 x 7/8 inch) and 2 flange nuts (5/16 inch) as shown in [Figure 2](#).
4. Torque all fasteners to 19.8 to 25.4 N·m (175 to 225 in-lb).



G035122

Figure 2

- | | |
|------------------------------------|---|
| 1. Carriage bolt (5/16 x 7/8 inch) | 4. Long brush-guard mount bracket |
| 2. Ball-picker mount | 5. Hex-head flange bolt (5/16 x 1 inch) |
| 3. Flange nut (5/16 inch) | |

Installing a Ball Picker to the Ball-Picker Mount

On most ball pickers (from various manufacturers), mount the ball picker to the center hole on the ball-picker mount (Figure 3).

Note: It may be necessary to drill the hole larger or to create additional holes, depending on the ball picker being installed.

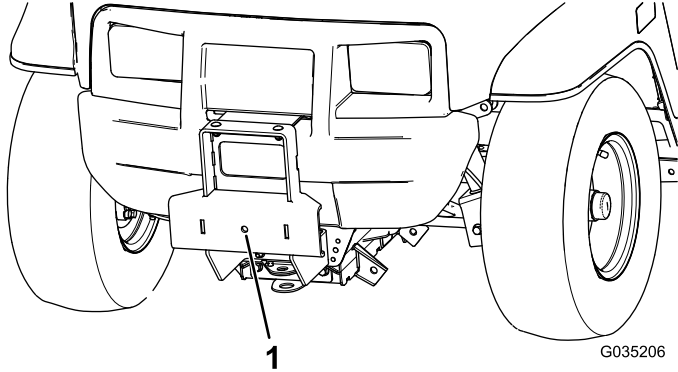


Figure 3

1. Center hole on the ball-picker mount
-