



Reverse Alarm Kit

Workman® GTX Utility Vehicle

Model No. 133-3018

Installation Instructions

⚠ WARNING

CALIFORNIA Proposition 65 Warning

This product contains a chemical or chemicals known to the State of California to cause cancer, birth defects, or reproductive harm.

Installation

Loose Parts

Use the chart below to verify that all parts have been shipped.

Procedure	Description	Qty.	Use
1	No parts required	–	Prepare the machine.
2	Proximity switch	1	Install the proximity switch.
	Switch plate	1	
	Carriage screw (#10 x 5/8 inch)	1	
	Locknut (#10)	1	
3	Wire harness	1	Route the wire harness.
	Cable tie	6	
	Alarm	1	
4	No parts required	–	Connect the battery.
5	No parts required	–	Test the alarm function.

Note: Determine the left and right sides of the machine from the normal operating position.



1

Preparing the Machine

No Parts Required

Procedure

1. Park the machine on a level surface, set the parking brake, shut off the engine, and remove the key.
2. Disconnect the negative-battery cable; refer to your *Operator's Manual*.
3. Remove the seat assembly; refer to your *Operator's Manual*.
4. Raise the cargo box; refer to your *Operator's Manual*.

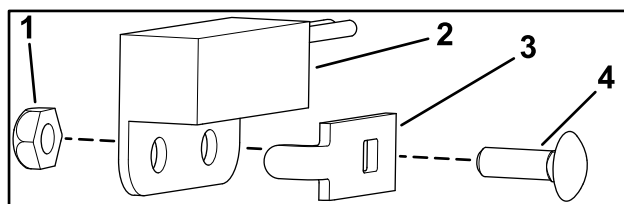


Figure 1

1. Locknut (#10)
2. Proximity switch
3. Switch plate
4. Carriage screw (#10 x 5/8 inch)

G034973

2

Installing the Proximity Switch

Parts needed for this procedure:

1	Proximity switch
1	Switch plate
1	Carriage screw (#10 x 5/8 inch)
1	Locknut (#10)

Procedure

1. Install the proximity switch to the slot in the transaxle bracket using the switch plate, carriage screw (#10 x 5/8 inch), and locknut (#10) as shown in [Figure 1](#).

Note: Ensure that there is a slight gap between the shift-lever tab and the switch. If there is not a gap, bend the tab on shift lever to create space.

2. Shift the machine to the REVERSE position and ensure that the tab on shift-lever tab aligns with the target on the switch, while you tighten the locknut (#10).
3. Connect the reverse-switch lead to the switch ([Figure 2](#)).

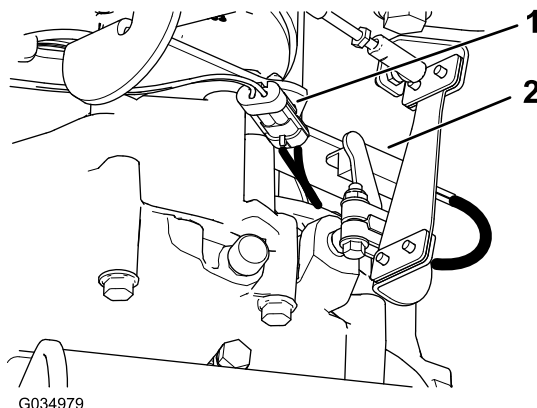


Figure 2

1. Reverse-switch lead
2. Proximity switch

G034979

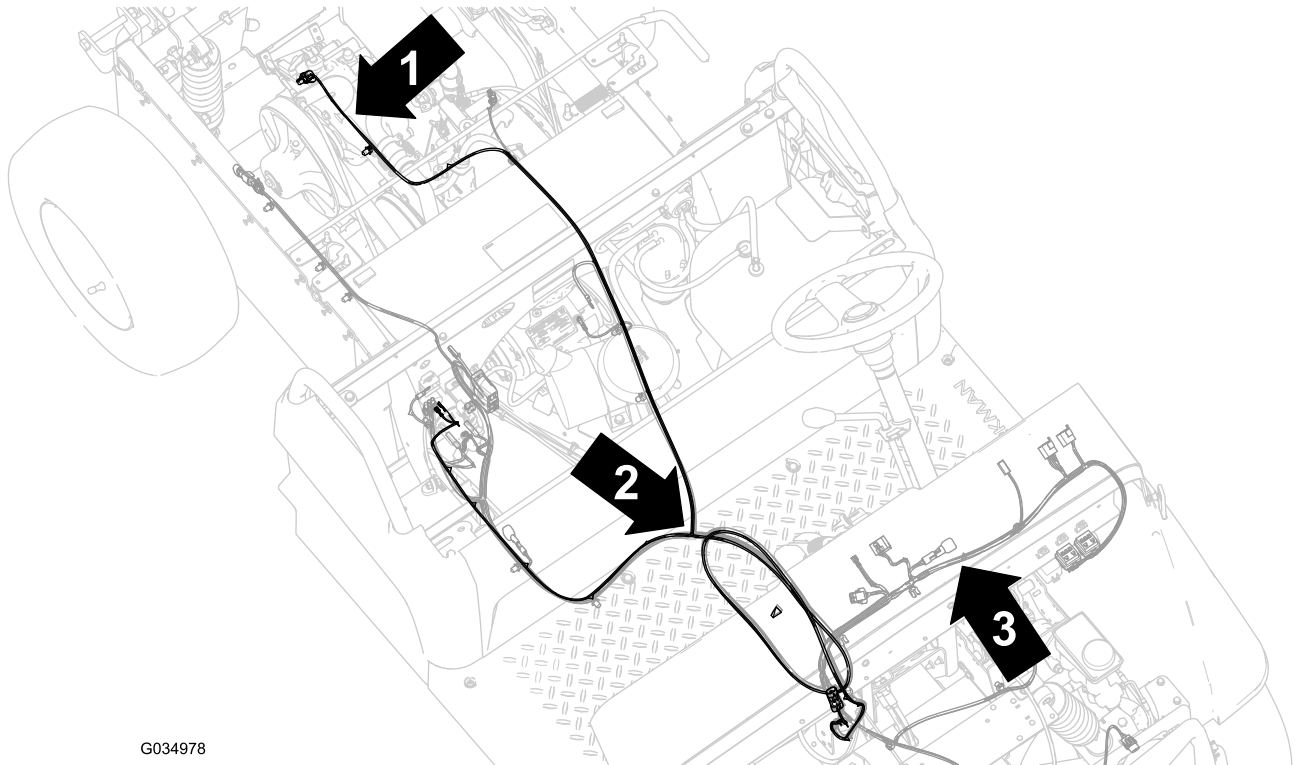
3

Routing the Wire Harness and Installing the Alarm

Parts needed for this procedure:

1	Wire harness
6	Cable tie
1	Alarm

Procedure



G034978

Figure 3

1. Kit wire harness
2. 'T' and loop on the kit wire harness
3. Machine wire harness

Important: If you do not have the Multi-Passenger Kit installed on your vehicle, you need to shorten the length of the options-power leg of the wire harness by 1 m (3 ft). Create a loop near the 'T' of the options-power leg of the wire harness and secure it with a cable tie ([Figure 3](#) and [Figure 4](#)).

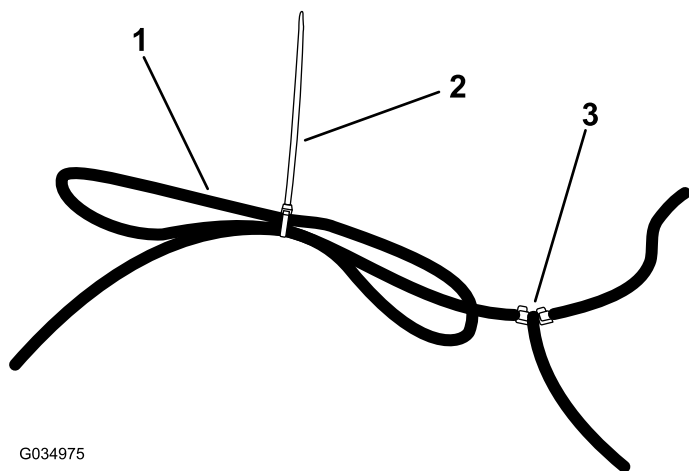


Figure 4

1. Loop of the options-power leg
2. Cable tie
3. "T" leg

1. Route the kit wire harness forward, along the transaxle bracket, and insert the push mount on the harness to the transaxle bracket ([Figure 5](#)).

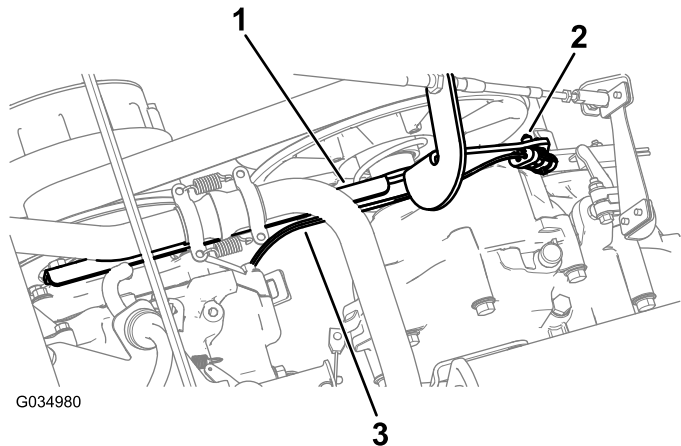


Figure 5

1. Transaxle bracket
2. Push mount
3. Kit harness

2. Route the kit wire harness along the left side of the engine following the machine wire harness and install cable ties as necessary ([Figure 6](#)).

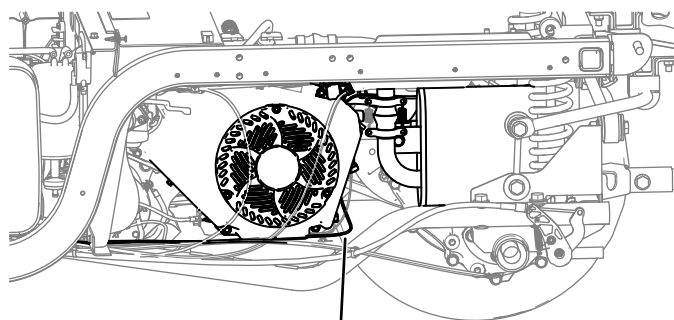


Figure 6

1. Kit wire harness

3. Raise the cover-panel levers and remove the cover panel to access the opening for the alarm in the rear-frame panel ([Figure 7](#)).

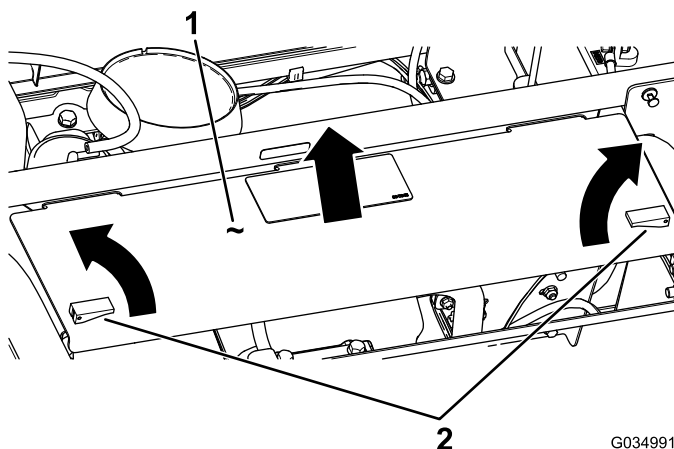


Figure 7

1. Cover panel
2. Cover-panel levers

4. Unscrew the cap from the alarm ([Figure 8](#)).

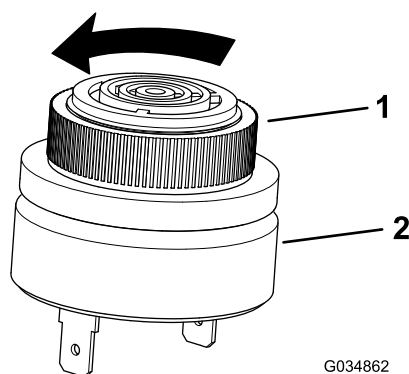


Figure 8

1. Cap
2. Alarm

5. Insert the alarm into the hole in the rear-frame panel and screw the cap onto the alarm ([Figure 9](#)).

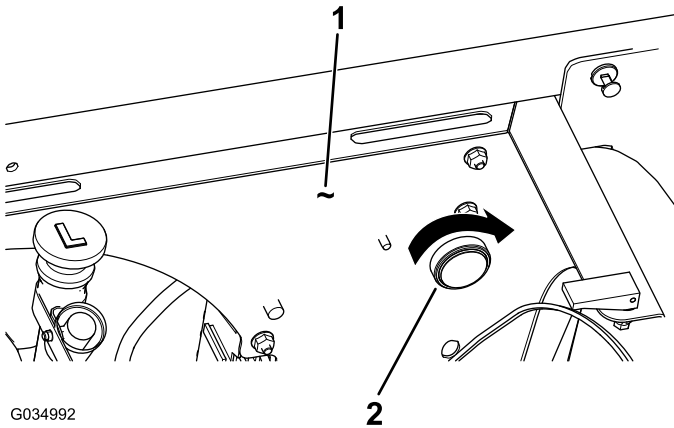


Figure 9

1. Rear-frame panel
2. Cap for alarm

6. Connect the 2 female connectors on the kit wire harness to the 2 male connectors on the alarm ([Figure 10](#)).

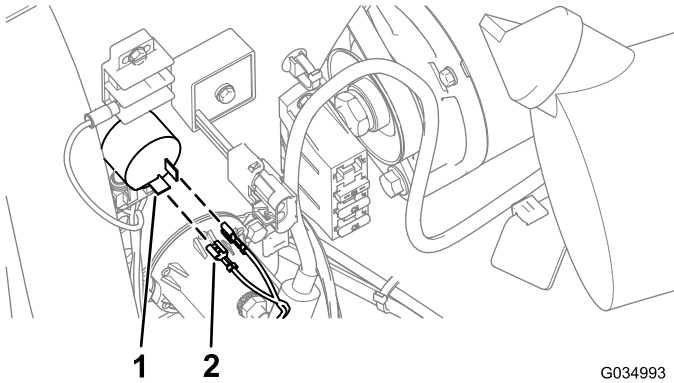


Figure 10

1. Male connector on the alarm
2. Female connector on the kit wire harness

7. Using fish tape, route the options-power lead to the front of the machine, under the footboard and through the dash, and install cable ties as necessary ([Figure 11](#)).

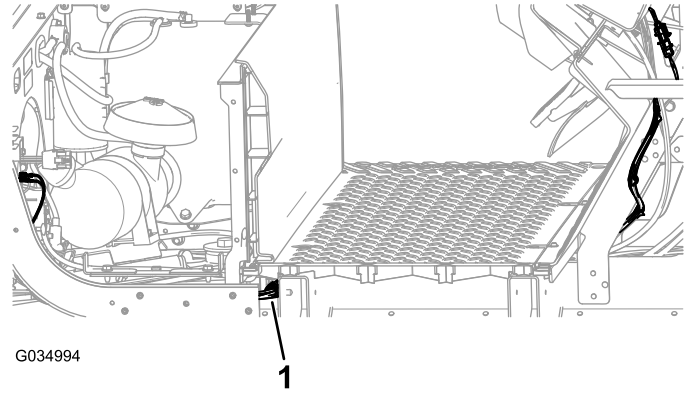


Figure 11

1. Kit wire harness

8. Plug the options-power lead into the options-power plug on the machine wire harness ([Figure 12](#)).

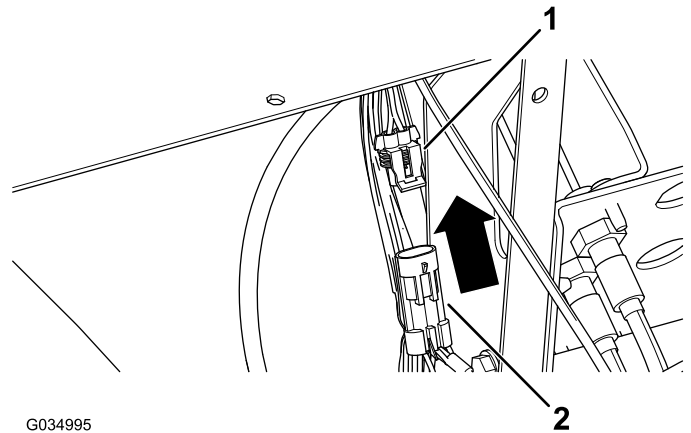


Figure 12

1. Options-power plug
2. Options-power lead

4

Connecting the Battery

No Parts Required

Procedure

Connect the negative-battery cable; refer to your *Operator's Manual*.

5

Testing the Alarm Function

No Parts Required

Procedure

Shift the machine to the REVERSE position, and the alarm should sound.

Shift the machine to the FORWARD or NEUTRAL position, and the alarm should stop.

Notes:



Count on it.