



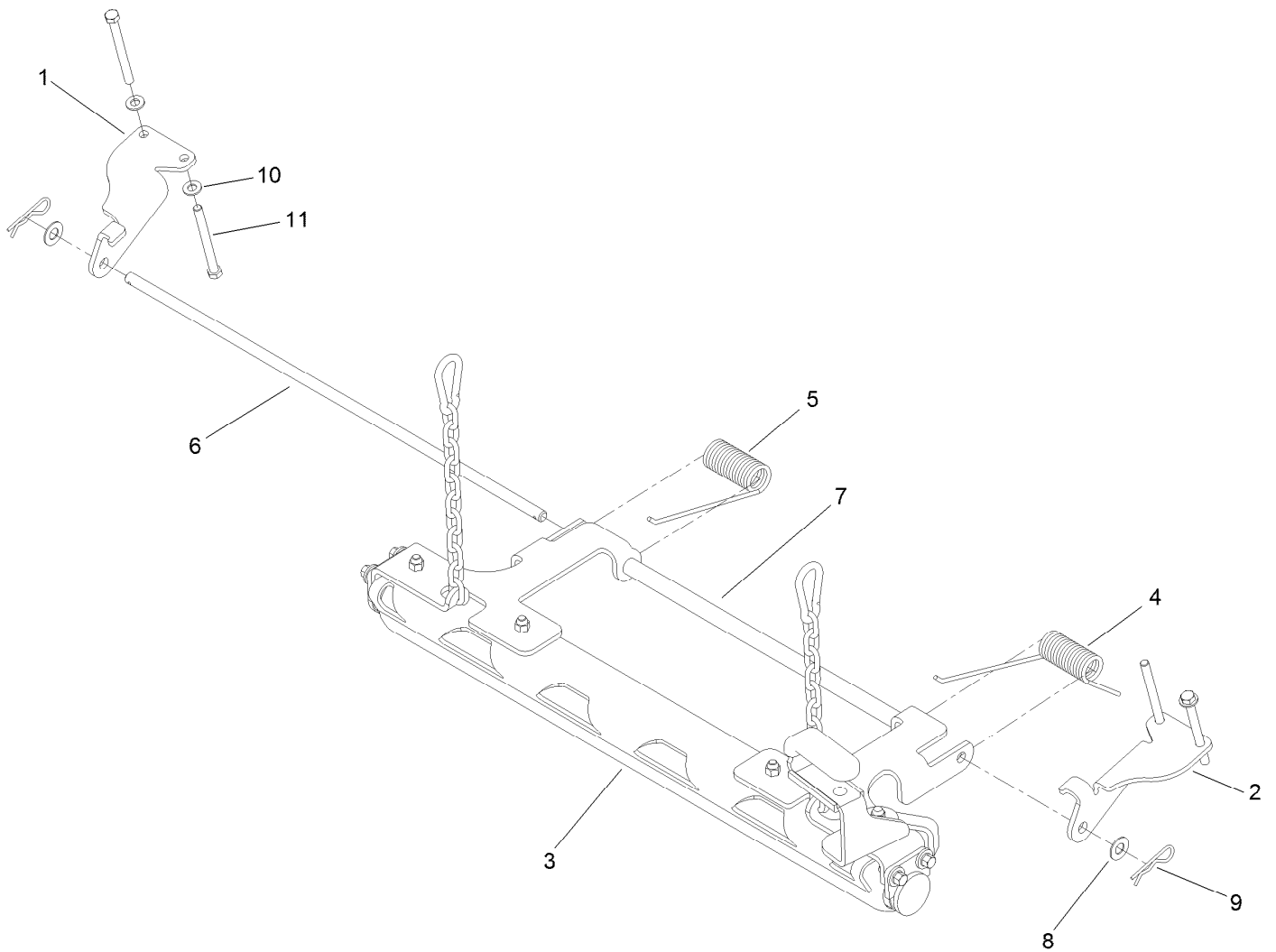
Count on it.

Parts Catalog

**Roller Striper Kit
GrandStand® Mower**

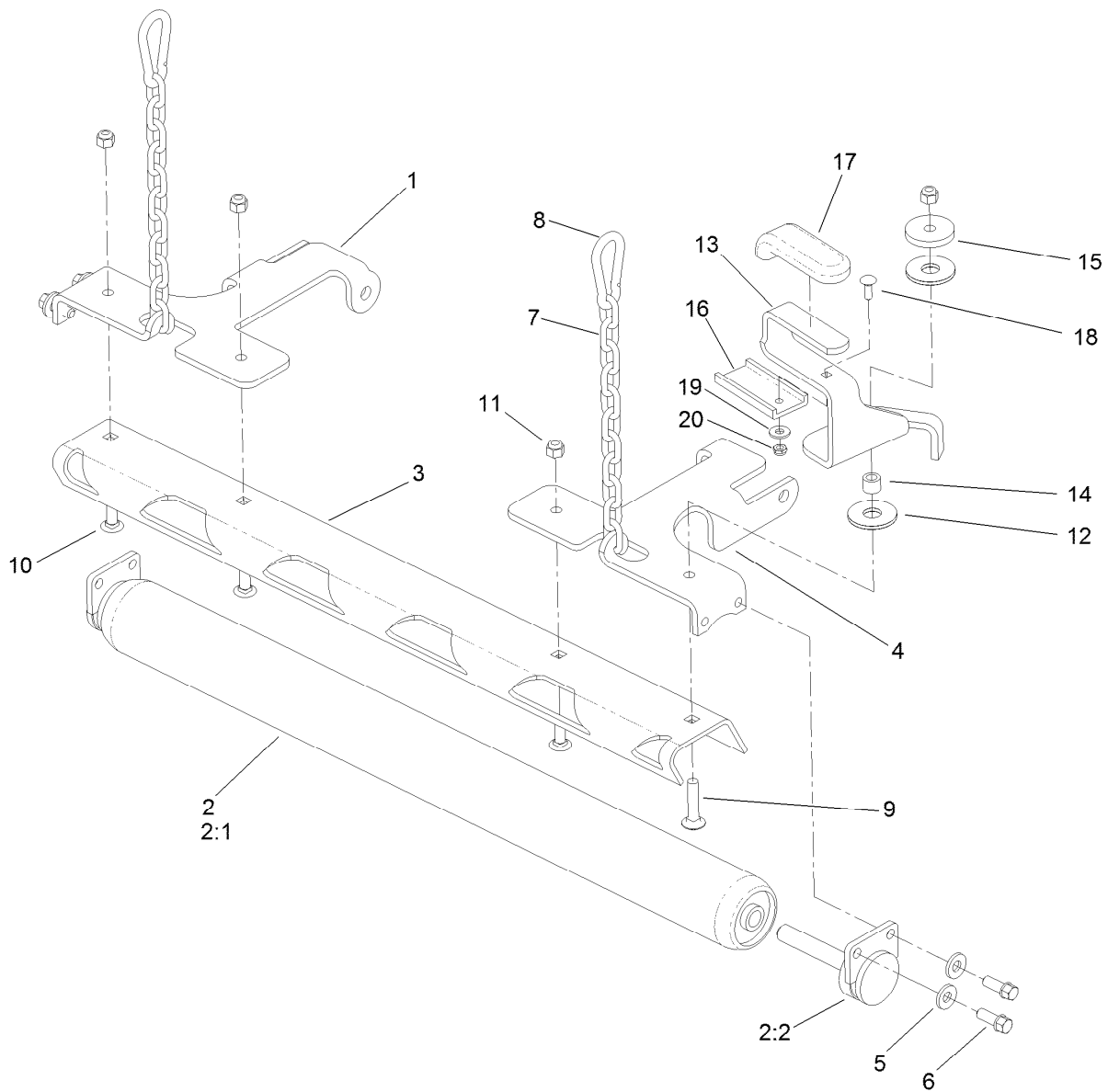
Model No. 133-1436





Roller Striper Assembly No. 133-1436

<i>Ref.</i>	<i>Part Number</i>	<i>Qty.</i>	<i>Description</i>
1	136-5653-03	1	Bracket-Striper Mount, LH
2	136-5654-03	1	Bracket-Striper Mount, RH
3	136-5680	1	Roller ASM
4	108-4075	1	Spring-Torsion
5	108-4076	1	Spring-Torsion
6	136-5673	1	Rod-Pivot
7	136-5674	1	Tube-Pivot
8	110-6894	2	Washer-Pivot
9	1-806005	2	Pin-Cotter
10	3256-24	4	Washer-Flat
11	323-16	4	Screw-HH



Roller Assembly No. 136-5680

<i>Ref.</i>	<i>Part Number</i>	<i>Qty.</i>	<i>Description</i>	<i>Ref.</i>	<i>Part Number</i>	<i>Qty.</i>	<i>Description</i>
1	114-3520-03	1	Mount-Roller, LH	10	3231-22	3	Screw-CARR
2	108-2199	1	Roller ASM	11	3296-39	4	Nut-Lock, NI
2:1	108-2157	1	Roller-Striper	12	114-0463	2	Washer-Friction, Composite
2:2	108-2198	2	Hub ASM	13	120-6473-03	1	Handle-Roller
3	136-5678-03	1	Scraper-Roller	14	1-413088	1	Bushing-Lever, Lift
4	114-3519-03	1	Mount-Roller, RH	15	110-9981	1	Washer-Plain
5	98-5975	4	Washer-Belleville	16	117-9667	1	Slide-Plastic
6	92-1624	4	Screw-HWH	17	1-633268	1	Grip-Lever
7	136-5707	2	Chain-Straight, Link	18	3229-1	1	Bolt-CARR
8	107-1507	2	Link-Snap	19	3256-2	1	Washer-Flat
9	3231-5	1	Screw-CARR	20	3296-56	1	Nut-Lock, NI



Count on it.