



Wheel Tooth Kit

SGR-6 and SGR-13 Stump Grinder

Model No. 132-4006

Model No. 132-4007

Model No. 132-4008

Form No. 3403-342 Rev A

Installation Instructions

⚠ WARNING

CALIFORNIA Proposition 65 Warning

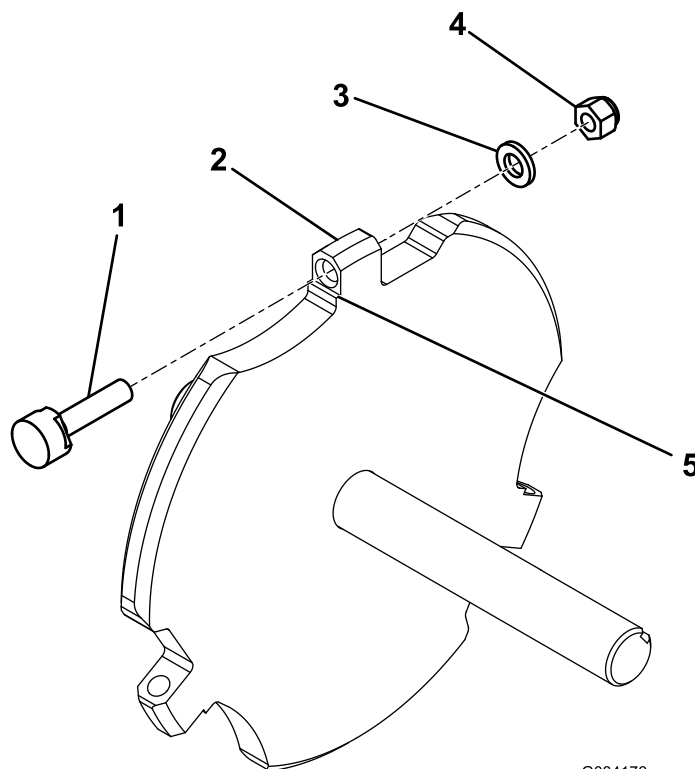
This product contains a chemical or chemicals known to the State of California to cause cancer, birth defects, or reproductive harm.

Installing the Kit

Due to the high amount of wear placed on the teeth, rotate and replace them periodically. Before you rotate or replace them, inspect each tooth holder on the wheel, including the flat lands that prevent the teeth from rotating. If the tooth holder is damaged, replace the wheel.

To install a tooth, align 1 of the 3 flat sides with the flat side on the cutting wheel. Secure the tooth with a washer and nut and torque the nut to 68 N·m (50 ft-lb).

Each tooth is indexed with 3 positions so that you can rotate it twice, exposing a new sharp edge before replacing the tooth. To rotate a tooth, loosen the nut securing the tooth (Figure 1). Push the tooth forward and rotate it 1/3 of a turn, bringing an unused edge to the outside. Torque the nut securing the tooth to 68 N·m (50 ft-lb).



G034176

Figure 1

- | | |
|-----------------|--------------|
| 1. Tooth | 4. Nut |
| 2. Tooth holder | 5. Flat land |
| 3. Washer | |

