



# Parking Brake Cable Kit

## 2015 and After GreensPro™ 1240 Greens Roller

Model No. 132-9293

### Installation Instructions

#### ⚠ WARNING

#### CALIFORNIA Proposition 65 Warning

This product contains a chemical or chemicals known to the State of California to cause cancer, birth defects, or reproductive harm.

## Removing the Cable

1. Move the machine to a level surface and shut off the engine.
2. Raise the machine up off the shop floor and support it with a suitable lift or jack stands.

#### ⚠ WARNING

Mechanical or hydraulic jacks may fail to support the machine and cause serious injury.

Use jack stands when supporting the machine.

3. Remove the retaining ring securing the cable end to the post on the parking-brake lever, and remove the cable end from the post (Figure 1).

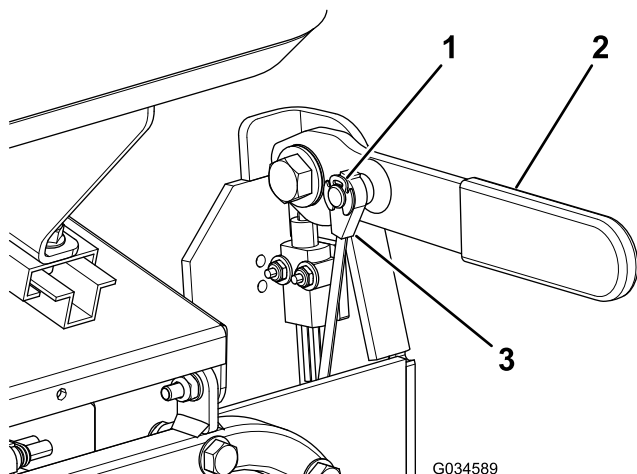


Figure 1

1. Retaining ring
2. Brake lever
3. Cable end

4. Remove the top nut on the threaded fitting securing the cable to the brake-lever bracket (Figure 2).

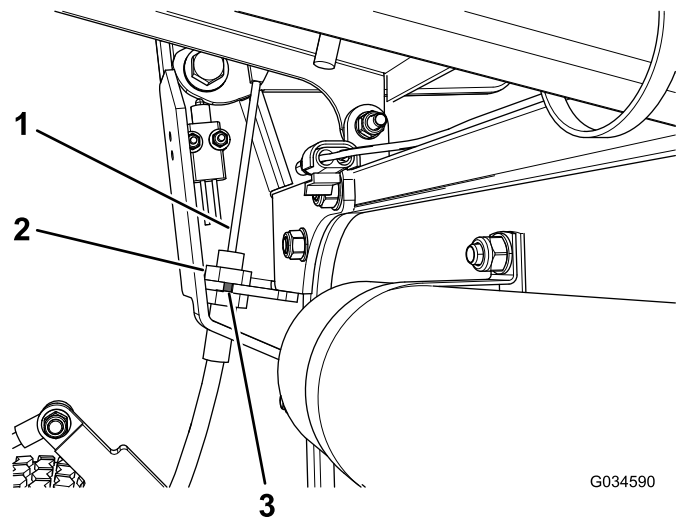


Figure 2

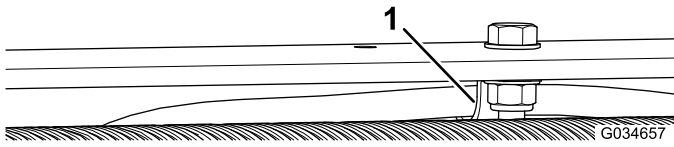
1. Cable
2. Nut
3. Slot

5. Slide the cable housing down to allow the cable to pass through the slot in the bracket (Figure 2).
6. Remove the cable clamp as follows (Figure 3):

**Note:** Retain the cable clamp and the fasteners for installing the replacement cable.

- A. Loosen the fasteners securing the drive roller on the drive end of the roller.
- B. Remove the drive roller from the machine on the parking-brake end of the roller.
- C. Remove the locknut, the bolt, and the washers securing the cable clamp to the frame of the machine.



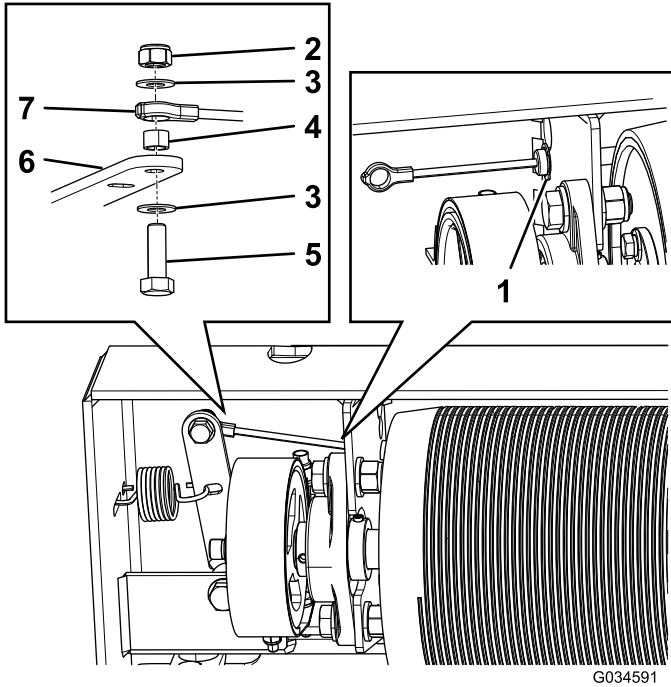


**Figure 3**

1. Cable clamp

7. Remove the bolt, the nut, and the washers securing the other cable end to the parking-brake pivot under the machine (Figure 4).

**Note:** Retain all of the hardware and the bushing for installing the replacement cable.



**Figure 4**

- |                   |                |
|-------------------|----------------|
| 1. Retaining ring | 5. Bolt        |
| 2. Locknut        | 6. Brake pivot |
| 3. Washer         | 7. Cable end   |
| 4. Bushing        |                |

8. Remove the retaining ring securing the cable housing to the machine frame (Figure 4).
9. Remove the cable.

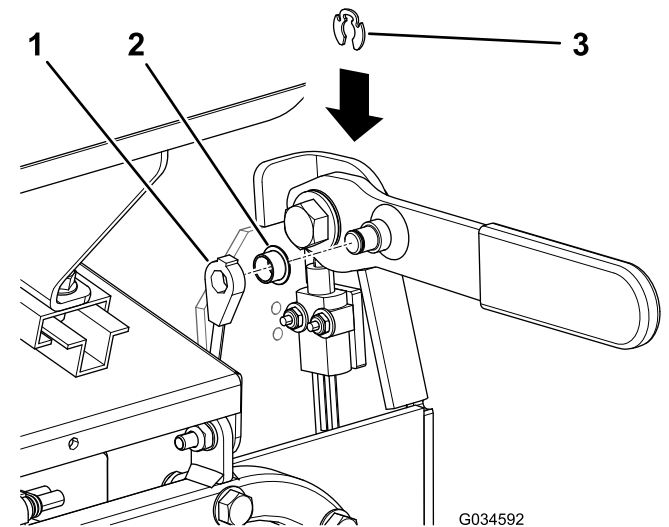
## Installing the Cable

**Note:** Use the bushing when installing the replacement cable.

1. Route the cable along the same path as the original cable.
2. Use the cable clamp previously removed to secure the cable to the frame of the machine.

**Note:** Secure the cable clamp with the locknut, the bolt, and the washers previously removed.

3. Install the parking-brake end of the drive roller to the machine.
4. Tighten the fasteners securing the drive roller on the drive end of the roller.
5. Install the retaining ring on the cable housing to secure it to the machine frame (Figure 4).
6. Install the existing bolt, nut, washers, and bushing to secure the other cable end to the parking-brake pivot under the machine (Figure 4).
7. Remove the top nut on the fitting near the parking-brake lever (Figure 2).
8. Pass the cable through the slot in the parking-brake bracket, and slide the fitting upward into position (Figure 2).
9. Install and tighten the top nut on the fitting to secure the fitting to the bracket (Figure 2).
10. Install the bushing over the post on the parking-brake lever (Figure 5).



**Figure 5**

- |              |                   |
|--------------|-------------------|
| 1. Cable end | 3. Retaining ring |
| 2. Bushing   |                   |

11. Install the cable end on the bushing (Figure 5).
12. Install the retaining ring on the post to secure the cable end to the post (Figure 5).
13. Adjust the parking brake as described in the machine *Operator's Manual*.
14. Safely and carefully lower the machine to the shop floor.