



Count on it.

Parts Catalog

41cm Recycler®

Lawn Mower

Model No. 21131—Serial No. 316000001 and Up



Ordering Replacement Parts

To order replacement parts, please supply the part number, the quantity, and the description of each part desired.

Understanding Reference Numbers

Each identified part in an illustration has a reference number. The reference number for a part also appears in the parts list, along with other information about the part.

This catalog uses two special reference number formats, one to indicate parts in a service assembly and another to indicate the quantity of a given part in an illustration.

Service Assembly Reference Numbers

Parts in service assemblies have reference numbers in the form a:b. The a represents the reference number of the entire service assembly and the b represents a sequential number unique to each part within the service assembly.

For example, a wheel assembly might be identified by reference number 6, the tire by 6:1, the valve by 6:2, and the wheel by 6:3. When you order the assembly identified by reference number 6, you receive all parts identified by reference numbers 6:1, 6:2, and 6:3. However, you may also order any part individually. Reference numbers of this type appear in illustration and in parts lists.

Reference Numbers Indicating Quantity

In an illustration, if a reference number indicates more than one part, the reference number has the form nX y. The n represents the quantity of the part, the X is the multiplication symbol, and the y represents the reference number.

For example, in an illustration, the reference number 2X 37 means that two of the parts identified by reference number 37 are indicated.

List of Abbreviations

AR: as required

ASM: assembly

BBC: blade brake control

BHTF: button head thread forming

CARR: carriage

CCW: counter clockwise

CW: clockwise

DEG: degrees

DPA: Dual Point Adjustment

ECM: electronic control module

EXT: external

FH: flat head

GA: gauge

HD: heavy-duty

HF: hex flange

HH: hex head

HHF: hex head flange

HHFTF: hex head flange thread forming

HJ: hex jam

HLH: hex lag head

HOC: height-of-cut

HP: high pressure

HSBH: hex socket button head

HSFH: hex socket flat head

HSH: hex socket head

HWH: hex washer head

HWHTF: hex washer head thread forming

HYD: hydraulic

LH: left hand

LP: low pressure

LPG: Liquefied Petroleum Gas

NI: nylon insert

NPTF: national pipe thread fine

PFH: phillips flat head

PPH: phillips pan head

PPHTF: phillips pan head thread forming

PRH: phillips round head

PTH: phillips truss head

PTO: power-take-off

RH: right hand

ROPS: roll-over protection system

RRB: rear roller brush

SFH: slotted fillister head

SHH: slotted hex head

SHWH: slotted hex washer head

SPH: slotted pan head

SQH: square head

SRH: slotted round head

STD: standard

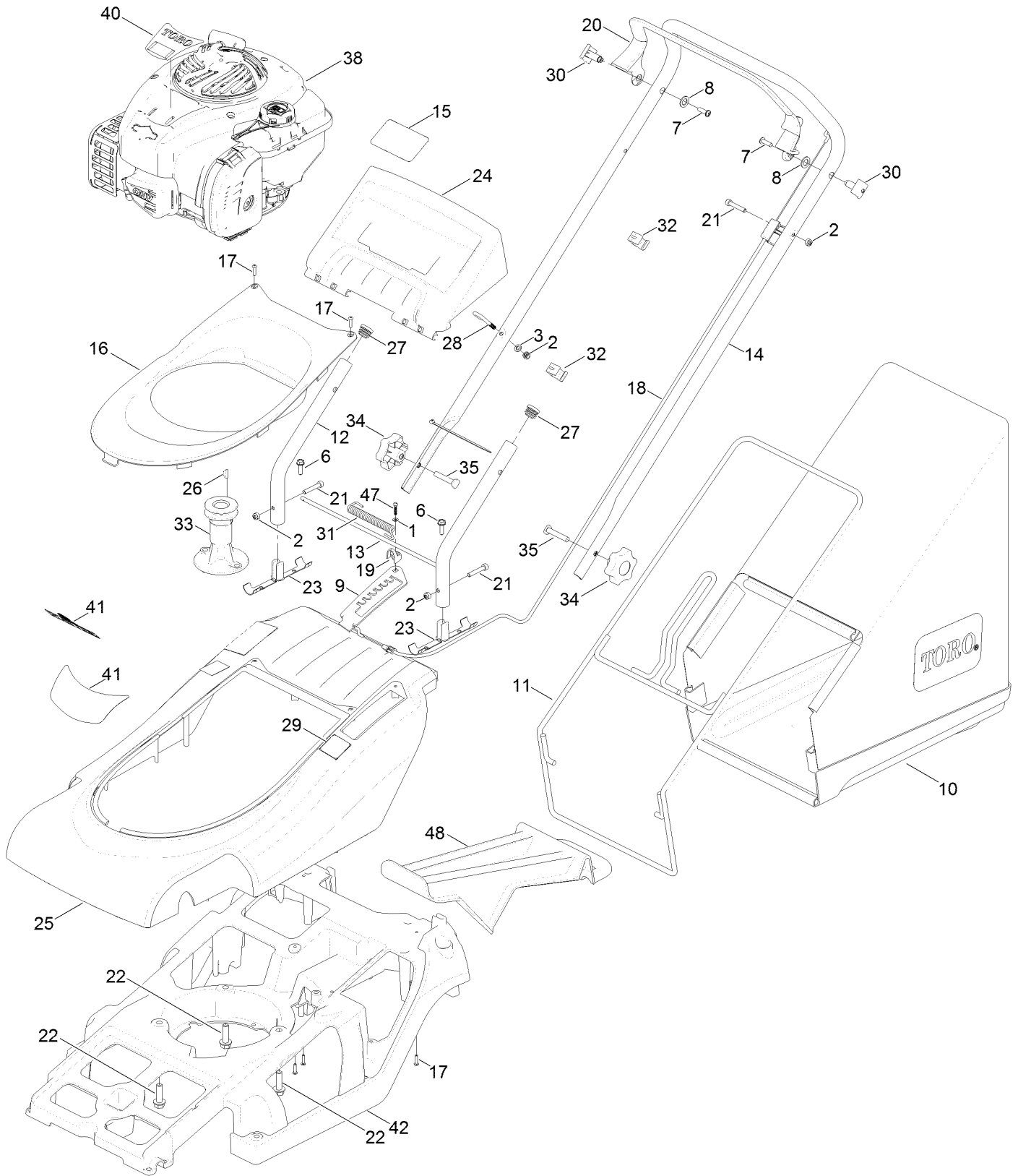
TAP: self tapping

TTH: torx truss head

Contents

Engine, Chassis, Handle and Bag Assembly 4
Deck, Wheel and Blade Assembly 6

Engine, Chassis, Handle and Bag Assembly



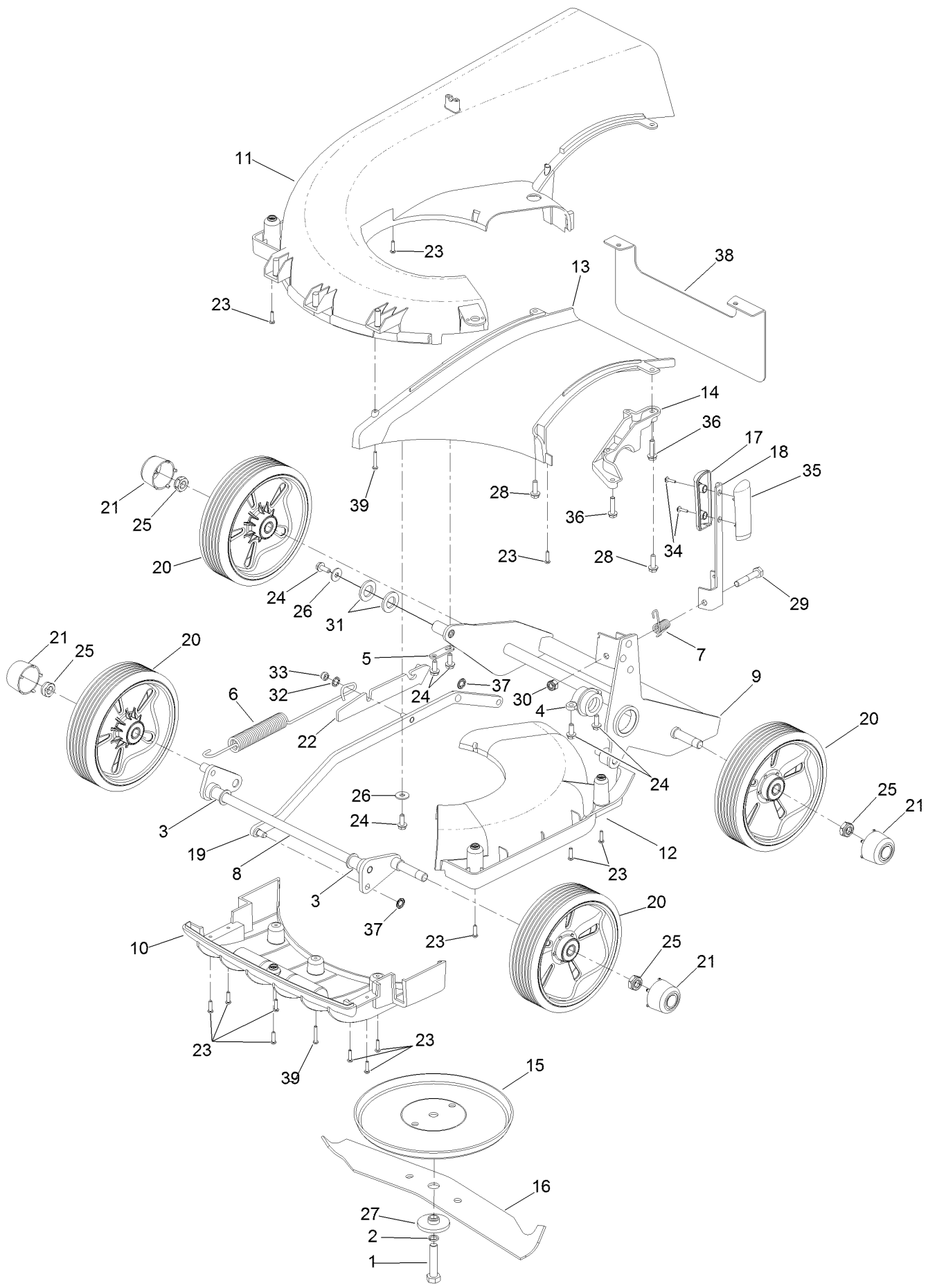
Engine, Chassis, Handle and Bag Assembly (continued)

<i>Ref.</i>	<i>Part Number</i>	<i>Qty.</i>	<i>Description</i>	<i>Ref.</i>	<i>Part Number</i>	<i>Qty.</i>	<i>Description</i>
1	09658	1	Washer	23	111-0960	2	Plug-Handlebar
2	09438	3	Nut-Nyloc	24	111-1043	1	Moulding-Deflector, Rear
3	09472	1	Washer-Plain	25	111-3978	1	Top-Cover
6	09575	2	Screw-Taptite	26	1662	1	Key-Woodruff
7	09687	2	Screw	27	300160	2	Plug-Tube
8	09688	6	Washer-Nylon	28	305093	1	Guide-Rope
9	111-0040	1	Plate-HOC	29	320006	1	Decal-HOC
10	111-4025	1	Grassbag	30	340182	2	Pin-Pivot
11	111-0045-03	1	Frame-Grassbag	31	410030	1	Spring-Deflector
12	111-0051-03	2	Handlebars-Lower	32	410037	2	Guide-Cable
13	111-0056	1	Bar-Hinge	33	410078	1	Carrier-Blade
14	111-0079-03	1	Handlebars	34	480088	2	Knob-Handlebar
15	111-0083	1	Decal-Safety	35	HY226024	2	Bolt-Handlebar
16	111-0089	1	Moulding-Trim	38		1	Engine-Briggs, 09P7020022H1 ● ■
17	111-0094	5	Screw				
18	111-0096	1	Cable-Brake, Engine	40	111-5433	1	Decal-Engine
19	111-0098	1	Clip-P	41	111-5432	1	Decal-Recycle
20	111-0102	1	Bailarm	42	111-0031-07	1	Chassis
21	111-0118	3	Screw-Socket	47	111-6806	1	Screw-Plastite
22	09349	3	Screw-Taptite, Unc	48	111-4382	1	Plug-Mulching

● Not serviced separately

■ Obtain parts from www.briggsandstratton.com

Deck, Wheel and Blade Assembly



Deck, Wheel and Blade Assembly (continued)

<i>Ref.</i>	<i>Part Number</i>	<i>Qty.</i>	<i>Description</i>	<i>Ref.</i>	<i>Part Number</i>	<i>Qty.</i>	<i>Description</i>
1	09788	1	Bolt-Unf	20	111-4036	4	Wheel ASM
2	09273	1	Washer-Spring	21	111-0066	4	Cap-Wheel, Center
3	410069	2	Bearing-Axle, Front	22	111-0073	1	Mount-Spring
4	410048	1	Housing-Pivot Bearing, LH	23	111-0094	13	Screw
5	219037	1	Plate-Securing	24	09365	6	Screw-Taptite
6	410050	1	Spring-Counter Balance	25	111-0119	4	Nut-Nyloc
7	111-0078	1	Spring-HOC	26	09262	2	Washer
8	111-0027	1	Axle-Front	27	HY4014	1	Spacer-Distance, Cutterbar
9	111-0068-03	1	Frame-Wheel	28	09575	2	Screw-Taptite
10	111-0034	1	Moulding-Fin	29	ZBH1H050U	1	Bolt
11	111-0037	1	Moulding-Snail Deck	30	09441	1	Nut-Hex, NI
12	111-0038	1	Moulding-Access, Snail Deck	31	09491	2	Washer-Plain
13	111-0039	1	Moulding-Throw Plate	32	09472	1	Washer-Plain
14	111-0050	1	Mount-Bearing	33	09438	1	Nut-Nyloc
15	410057W	1	Disc-Friction	34	HY100078	2	Screw
16	111-0093	1	Cutterbar	35	111-0105	1	Knob-HOC, LH
17	111-0055	1	Knob-HOC, RH	36	09364	2	Screw-HH
18	111-0059	1	Lever-HOC	37	0201086	2	Washer-Starlock
19	111-0063	1	Rod-Connecting Bar	38	111-4952-03	1	Guard-Rear
				39	111-0100	2	Screw



Count on it.