



**Count on it.**

**Parts Catalog**

**41cm Electric Lawn Mower**

Model No. 21141—Serial No. 316000001 and Up



# Ordering Replacement Parts

To order replacement parts, please supply the part number, the quantity, and the description of each part desired.

## Understanding Reference Numbers

Each identified part in an illustration has a reference number. The reference number for a part also appears in the parts list, along with other information about the part.

This catalog uses two special reference number formats, one to indicate parts in a service assembly and another to indicate the quantity of a given part in an illustration.

## Service Assembly Reference Numbers

Parts in service assemblies have reference numbers in the form a:b. The a represents the reference number of the entire service assembly and the b represents a sequential number unique to each part within the service assembly.

For example, a wheel assembly might be identified by reference number 6, the tire by 6:1, the valve by 6:2, and the wheel by 6:3. When you order the assembly identified by reference number 6, you receive all parts identified by reference numbers 6:1, 6:2, and 6:3. However, you may also order any part individually. Reference numbers of this type appear in illustration and in parts lists.

## Reference Numbers Indicating Quantity

In an illustration, if a reference number indicates more than one part, the reference number has the form nX y. The n represents the quantity of the part, the X is the multiplication symbol, and the y represents the reference number.

For example, in an illustration, the reference number 2X 37 means that two of the parts identified by reference number 37 are indicated.

# List of Abbreviations

**AR:** as required

**ASM:** assembly

**BBC:** blade brake control

**BHTF:** button head thread forming

**CARR:** carriage

**CCW:** counter clockwise

**CW:** clockwise

**DEG:** degrees

**DPA:** Dual Point Adjustment

**ECM:** electronic control module

**EXT:** external

**FH:** flat head

**GA:** gauge

**HD:** heavy-duty

**HF:** hex flange

**HH:** hex head

**HHF:** hex head flange

**HHFTF:** hex head flange thread forming

**HJ:** hex jam

**HLH:** hex lag head

**HOC:** height-of-cut

**HP:** high pressure

**HSBH:** hex socket button head

**HSFH:** hex socket flat head

**HSH:** hex socket head

**HWH:** hex washer head

**HWHTF:** hex washer head thread forming

**HYD:** hydraulic

**LH:** left hand

**LP:** low pressure

**LPG:** Liquefied Petroleum Gas

**NI:** nylon insert

**NPTF:** national pipe thread fine

**PFH:** phillips flat head

**PPH:** phillips pan head

**PPHTF:** phillips pan head thread forming

**PRH:** phillips round head

**PTH:** phillips truss head

**PTO:** power-take-off

**RH:** right hand

**ROPS:** roll-over protection system

**RRB:** rear roller brush

**SFH:** slotted fillister head

**SHH:** slotted hex head

**SHWH:** slotted hex washer head

**SPH:** slotted pan head

**SQH:** square head

**SRH:** slotted round head

**STD:** standard

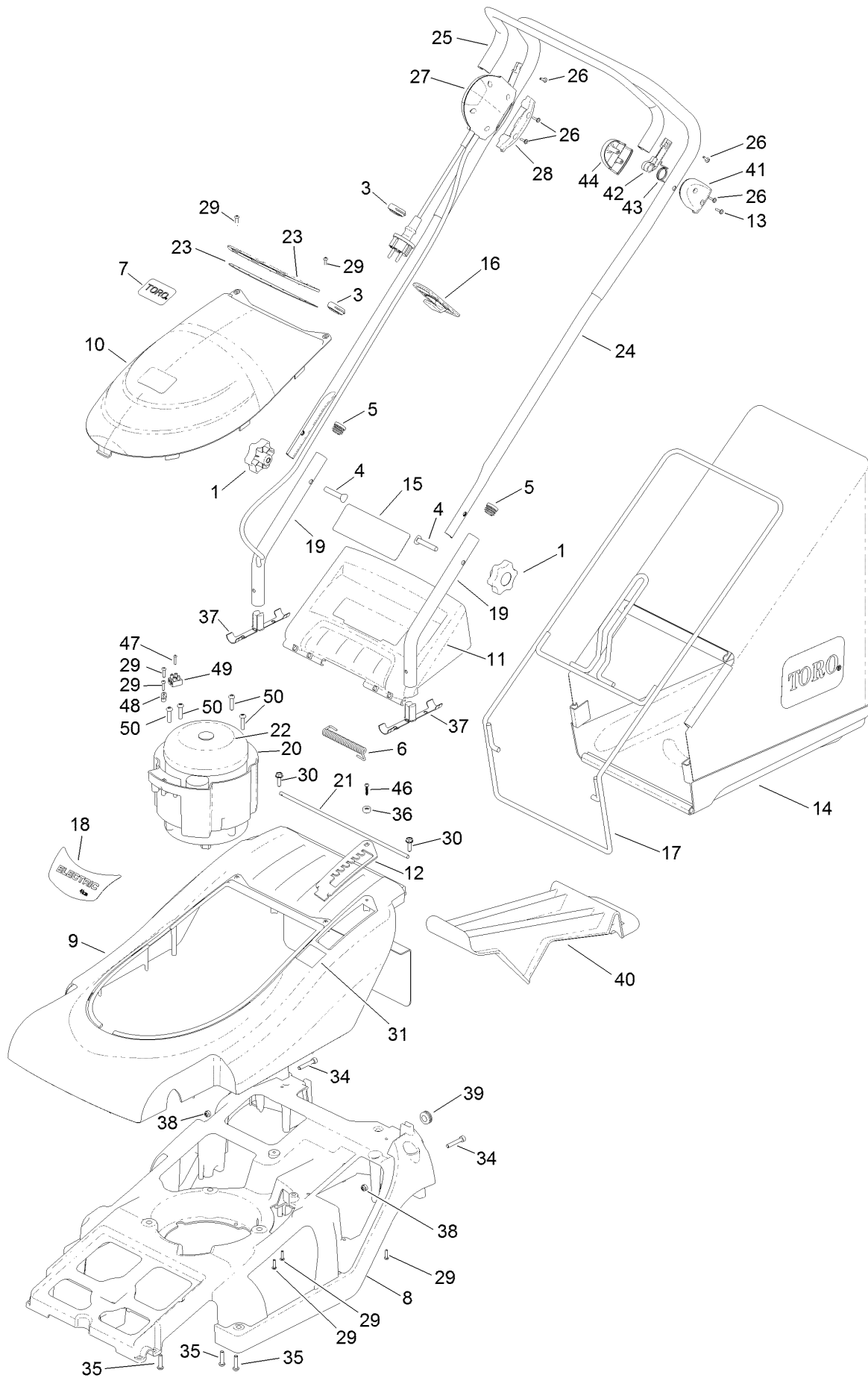
**TAP:** self tapping

**TTH:** torx truss head

# Contents

Upper Assembly ..... 4  
Lower Assembly ..... 6

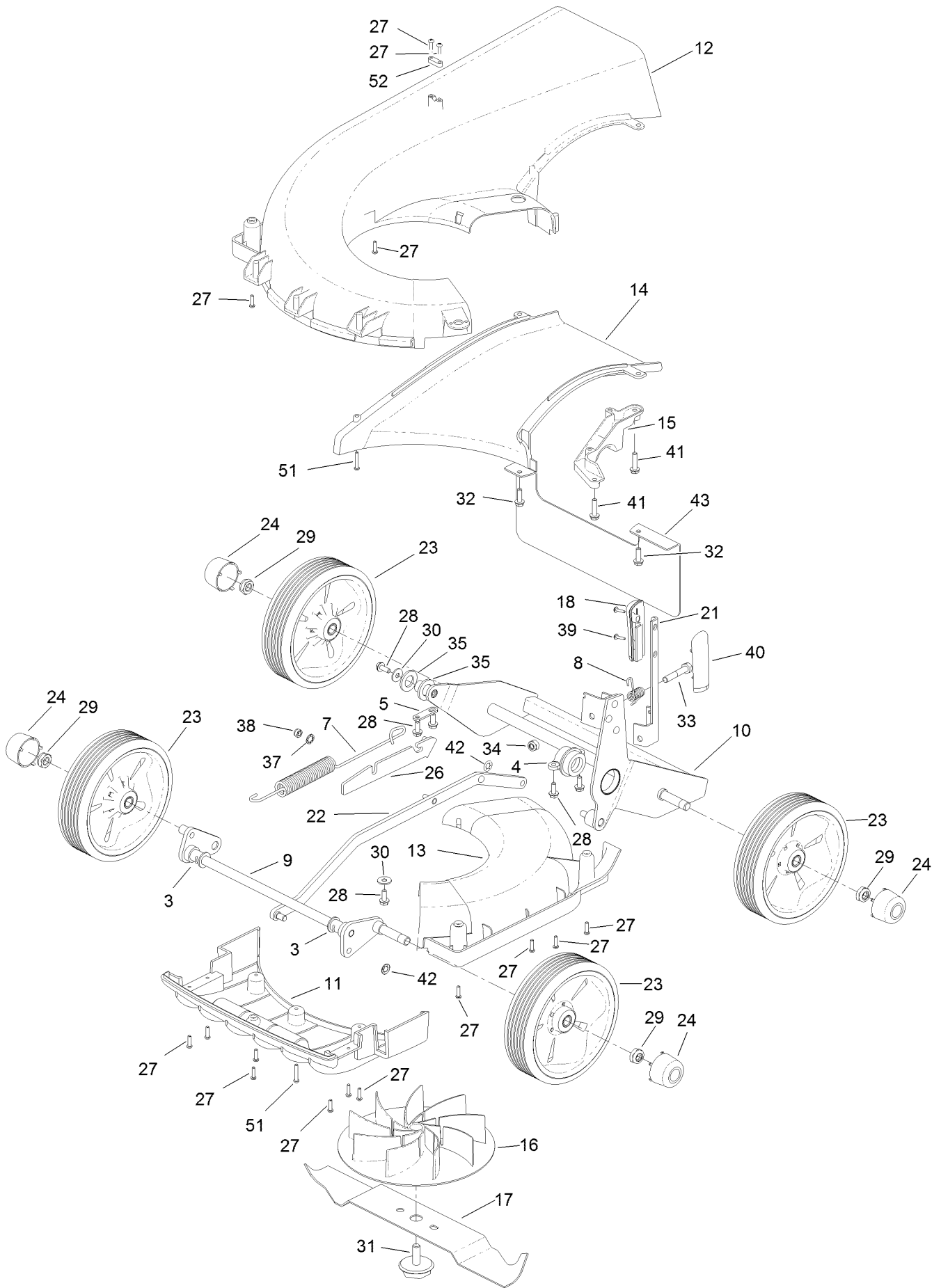
# Upper Assembly



## Upper Assembly (continued)

<i>Ref.</i>	<i>Part Number</i>	<i>Qty.</i>	<i>Description</i>	<i>Ref.</i>	<i>Part Number</i>	<i>Qty.</i>	<i>Description</i>
1	480088	2	Knob-Handlebar	24	111-0091	1	Handlebars-Electric
3	100023	2	Clip-Cable	25	HY100017	1	Arm-Bail
4	HY226024	2	Bolt-Handlebar	26	HY100078	5	Screw
5	300160	2	Plug-Tube	27	111-4070	1	Switch And Lead ASM
6	410030	1	Spring-Deflector	28	HY100021	1	Switch-Left, Lower
7	111-4977	1	Decal-Toro	29	111-0094	7	Screw
8	111-0031-07	1	Chassis	30	09575	2	Screw-Taptite
9	111-3978	1	Top-Cover	31	320006	1	Decal-HOC
10	111-3977	1	Cover-Motor	34	111-0118	2	Screw-Socket
11	111-1043	1	Moulding-Deflector, Rear	35	111-6841	3	Screw
12	111-0040	1	Plate-HOC	36	111-0107	1	Cup-Screw, Electric
13	HY100128	1	Screw-PPH	37	111-0960	2	Plug-Handlebar
14	111-4025	1	Grassbag	38	09438	2	Nut-Nyloc
15	111-5173	1	Decal-Safety, Electric	39	111-2155	1	Grommet-Rubber
16	100105	1	Cleat-Cable	40	111-4382	1	Plug-Mulching
17	111-0045-03	1	Frame-Grassbag	41	100085	1	Mount-Left
18	111-4073	1	Decal	42	HY100088	1	Lever-Mount
19	111-0051-03	2	Handlebars-Lower	43	HY100087	1	Spring-Bailarm
20	111-0052	1	Moulding-Mount, Electric Motor	44	100086	1	Mount-Right
21	111-0056	1	Bar-Hinge	46	111-6806	1	Screw-Plastite
22	309052	1	Motor-Induction, 1.5Kw	47	111-7110	1	Screw-Drive, Plastite
23	111-8124	1	Moulding - Vent Mesh Support	48	111-0117	1	Clamp-Cable
				49	HY100077	1	Block-Terminal
				50	111-0115	4	Screw

# Lower Assembly



## Lower Assembly (continued)

<i>Ref.</i>	<i>Part Number</i>	<i>Qty.</i>	<i>Description</i>	<i>Ref.</i>	<i>Part Number</i>	<i>Qty.</i>	<i>Description</i>
3	410069	2	Bearing-Axle, Front	24	111-0066	4	Cap-Wheel, Center
4	410048	1	Housing-Pivot Bearing, LH	26	111-0073	1	Mount-Spring
5	219037	1	Plate-Securing	27	111-0094	15	Screw
7	410050	1	Spring-Counter Balance	28	09365	6	Screw-Taptite
8	111-0078	1	Spring-HOC	29	111-0119	4	Nut-Nyloc
9	111-0027	1	Axle-Front	30	09262	2	Washer
10	111-0068-03	1	Frame-Wheel	31	111-0099	1	Bolt-Fixing, Blade
11	111-0034	1	Moulding-Fin	32	09575	2	Screw-Taptite
12	111-0037	1	Moulding-Snail Deck	33	ZBH1H050U	1	Bolt
13	111-0038	1	Moulding-Access, Snail Deck	34	09441	1	Nut-Hex, NI
14	111-0039	1	Moulding-Throw Plate	35	09491	2	Washer-Plain
15	111-0050	1	Mount-Bearing	37	09472	1	Washer-Plain
16	111-0053	1	Moulding-Mount, Electric Blade	38	09438	1	Nut-Nyloc
17	111-0054	1	Cutterbar-Electric	39	HY100078	2	Screw
18	111-0055	1	Knob-HOC, RH	40	111-0105	1	Knob-HOC, LH
21	111-0059	1	Lever-HOC	41	09364	2	Screw-HH
22	111-0063	1	Rod-Connecting Bar	42	0201086	2	Washer-Starlock
23	111-4036	4	Wheel ASM	43	111-4952-03	1	Guard-Rear
				51	111-0100	2	Screw
				52	111-0117	1	Clamp-Cable



**Count on it.**