

# Idler Pulley Kit

## Kit No. 126-7890

### Installation Instructions

#### ⚠ WARNING

##### CALIFORNIA Proposition 65 Warning

This product contains a chemical or chemicals known to the State of California to cause cancer, birth defects, or reproductive harm.

## Safety Alert Symbol

This Safety Alert Symbol (Figure 1) is used both in this instruction sheet and on the machine to identify important safety messages which must be followed to avoid accidents

This symbol means: **ATTENTION! BECOME ALERT! YOUR SAFETY IS INVOLVED!**



**Figure 1**  
Safety Alert Symbol

The safety alert symbol appears above information which alerts you to unsafe actions or situations and will be followed by the word **DANGER**, **WARNING**, or **CAUTION**.

**DANGER:** Indicates an imminently hazardous situation which, if not avoided, **Will** result in death or serious injury.

**WARNING:** Indicates a potentially hazardous situation which, if not avoided, **Could** result in death or serious injury.

**CAUTION:** Indicates a potentially hazardous situation which, if not avoided, **May** result in minor or moderate injury.

This manual uses two other words to highlight information.

**Important** calls attention to special mechanical information and **Note** emphasizes general information worthy of special attention.

#### ⚠ WARNING

If you leave the wire on the spark plug, someone could accidentally start the engine. Accidental starting of the engine could seriously injure you or other bystanders.

Disconnect the wire from the spark plug before you do any maintenance. Set the wire aside so that it does not accidentally contact the spark plug.

**Note:** Determine the left and right sides of the machine from the normal operating position.

**Note:** Park the unit on a level surface. Make sure all moving parts have stopped and the spark plug wire has been disconnected. Allow unit to cool before starting these instructions.



# Loose Parts

Use the chart below to verify that all parts have been shipped.

Item	Part No.	Description	Qty
1	126-5880	Asm-Pulley Flat Idler	2
2	126-7151	Plug-Button	2
3	131-4504	Adapter-Bore	1
4	3256-3	Washer-5/16 Std	3
5	32144-57	Screw-HWH 5/16-18 x 1 1/2 TF	2

Item	Part No.	Description	Qty
6	126-6453	Bracket - Idler	1
7	120-7024	Screw-HH FLG 1/4-20 x 3/4 TF	2
8	9114524	Bolt-HH 5/16-18 x 2 1/4 Tap	1
9	3296-29	Nut-Nyloc 5/16-18	1
10	121-2336	Spring-Flat	1

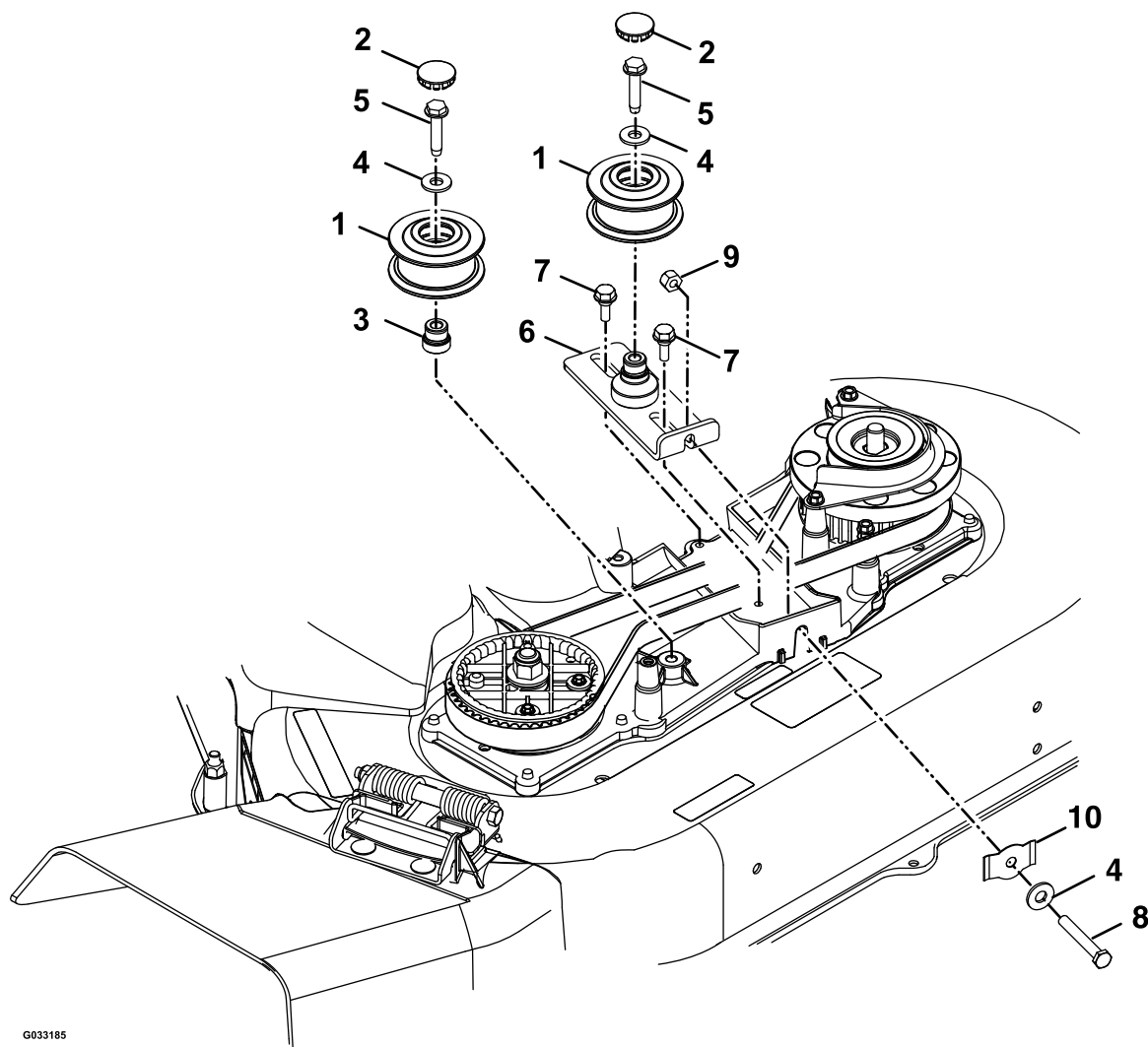
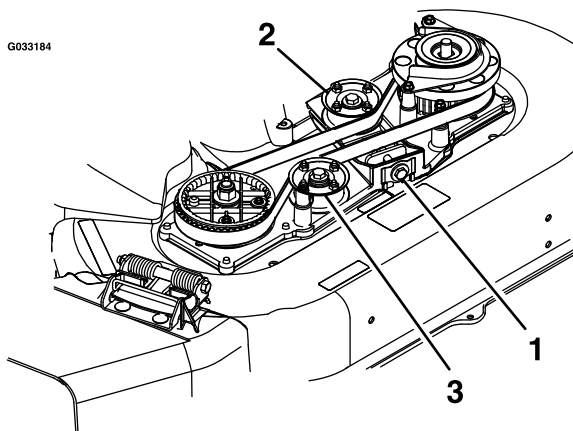


Figure 2

# Removing the Idler Pulleys

1. Remove and retain the front belt cover and its four bolts. Remove any debris under the cover.
2. Remove and discard the adjusting bolt, washer, flat spring, and nut that secures the idler bracket to the deck as shown in [Figure 3](#).



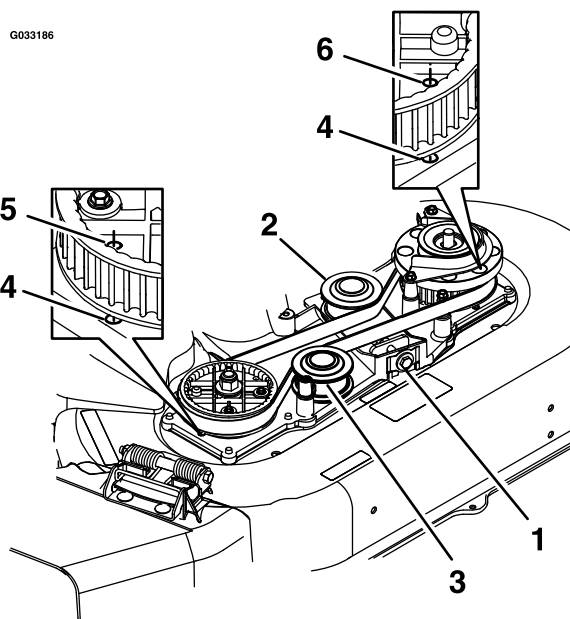
**Figure 3**

1. Adjusting bolt, washer, flat spring, and nut
2. Idler bracket and pulley assembly
3. Fixed pulley

3. Remove and discard the idler bracket and pulley assembly along with its mounting hardware.
4. Remove and discard the fixed idler pulley, adapter, and its mounting hardware.
5. Inspect the blade drive belt for wear; replace if needed.

# Installing the Idler Pulleys

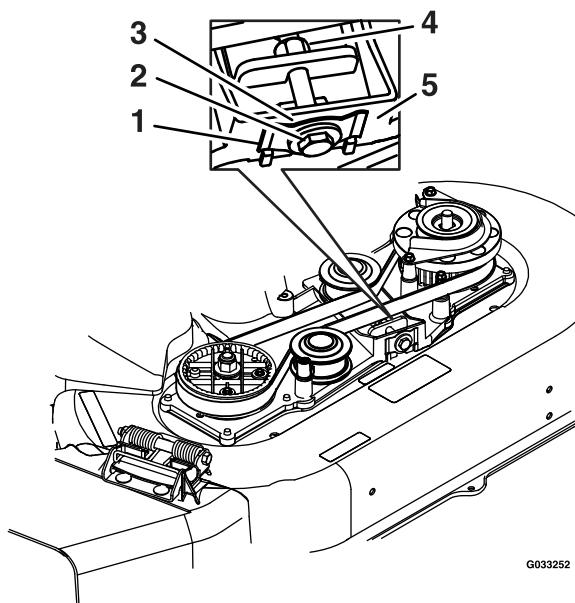
1. Using components from the kit, assemble one pulley to the idler bracket adapter and secure with a 5/16 x 1 1/2 inch self-tapping screw and flat washer (see [Figure 2](#)). Torque the screw to 144-176 in-lb (16-20 N-m). Install the button plug over the screw and press down until it snaps into the pulley.
2. Place the pulley and idler bracket assembly onto the deck and loosely install the flat spring, washer, 5/16 x 2 1/4 inch screw and nyloc nut.
3. Install the two 1/4 x 3/4 inch screws securing the idler bracket assembly to the deck and torque to 99-121 in-lb (11-14 N-m).
4. Align the holes in the RH and LH sprockets with the holes in the deck as shown in [Figure 4](#). Hold the sprockets into place with a rod or screw driver.



**Figure 4**

1. Adjusting bolt, washer, flat spring, and nut
2. Idler bracket and pulley assembly
3. Fixed idler
4. Hole in deck
5. RH sprocket hole
6. LH sprocket hole (BBC idler removed for clarity)

5. Once the blades are locked in place and the belt teeth are engaged in the sprockets, install the fixed idler as shown in [Figure 2](#) and [Figure 4](#). Torque the 5/16 x 1 1/2 inch screw to 144-176 in-lb (16-20 N-m). Install the button plug over the screw and press down until it snaps into the pulley.
6. Adjust the belt tension by tightening the adjusting bolt and nut (see [Figure 5](#)). Using a feeler gauge, a piece of paper, or a note card, place it against the frame. The gap between the gauge and the spring should be .005-.030 inch (.13-.76 mm), tighten the adjusting bolt and nut until the paper barely slides freely in and out of the gap.



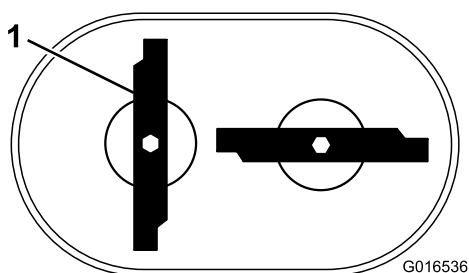
**Figure 5**

- |                        |                  |
|------------------------|------------------|
| 1. Belt tension spring | 4. Adjusting nut |
| 2. Adjusting bolt      | 5. Frame         |
| 3. Gap                 |                  |

---

**Important:** Do Not overtighten the adjusting bolt. This could damage the blade drive belt.

7. Remove the rod or screwdrivers from the sprockets.
8. Check the blades under the deck to make sure they are properly aligned. The two blades will form a sideways “T” as shown in [Figure 6](#).



**Figure 6**

1. Blades form sideways “T”

- 
9. Rotate the blades by hand, a full 360 degree turn to ensure they Do Not touch.

**Important:** If the blades touch, they are not timed correctly; refer to the mower Operator’s manual for adjustment instructions.

10. When the blades are timed, replace the front belt cover using its four bolts.
11. Reconnect the spark plug wire.