



Count on it.

Parts Catalog

GreensPro™ 1240 Greens Roller

Model No. 44912—Serial No. 314000001 and Up



Ordering Replacement Parts

To order replacement parts, please supply the part number, the quantity, and the description of each part desired.

Understanding Reference Numbers

Each identified part in an illustration has a reference number. The reference number for a part also appears in the parts list, along with other information about the part.

This catalog uses two special reference number formats, one to indicate parts in a service assembly and another to indicate the quantity of a given part in an illustration.

Service Assembly Reference Numbers

Parts in service assemblies have reference numbers in the form a:b. The a represents the reference number of the entire service assembly and the b represents a sequential number unique to each part within the service assembly.

For example, a wheel assembly might be identified by reference number 6, the tire by 6:1, the valve by 6:2, and the wheel by 6:3. When you order the assembly identified by reference number 6, you receive all parts identified by reference numbers 6:1, 6:2, and 6:3. However, you may also order any part individually. Reference numbers of this type appear in illustration and in parts lists.

Reference Numbers Indicating Quantity

In an illustration, if a reference number indicates more than one part, the reference number has the form nX y. The n represents the quantity of the part, the X is the multiplication symbol, and the y represents the reference number.

For example, in an illustration, the reference number 2X 37 means that two of the parts identified by reference number 37 are indicated.

List of Abbreviations

AR: as required

ASM: assembly

BBC: blade brake control

BHTF: button head thread forming

CARR: carriage

CCW: counter clockwise

CW: clockwise

DEG: degrees

DPA: Dual Point Adjustment

ECM: electronic control module

EXT: external

FH: flat head

GA: gauge

HD: heavy-duty

HF: hex flange

HH: hex head

HHF: hex head flange

HHFTF: hex head flange thread forming

HJ: hex jam

HLH: hex lag head

HOC: height-of-cut

HP: high pressure

HSBH: hex socket button head

HSFH: hex socket flat head

HSH: hex socket head

HWH: hex washer head

HWHTF: hex washer head thread forming

HYD: hydraulic

LH: left hand

LP: low pressure

LPG: Liquefied Petroleum Gas

NI: nylon insert

NPTF: national pipe thread fine

PFH: phillips flat head

PPH: phillips pan head

PPHTF: phillips pan head thread forming

PRH: phillips round head

PTH: phillips truss head

PTO: power-take-off

RH: right hand

ROPS: roll-over protection system

RRB: rear roller brush

SFH: slotted fillister head

SHH: slotted hex head

SHWH: slotted hex washer head

SPH: slotted pan head

SQH: square head

SRH: slotted round head

STD: standard

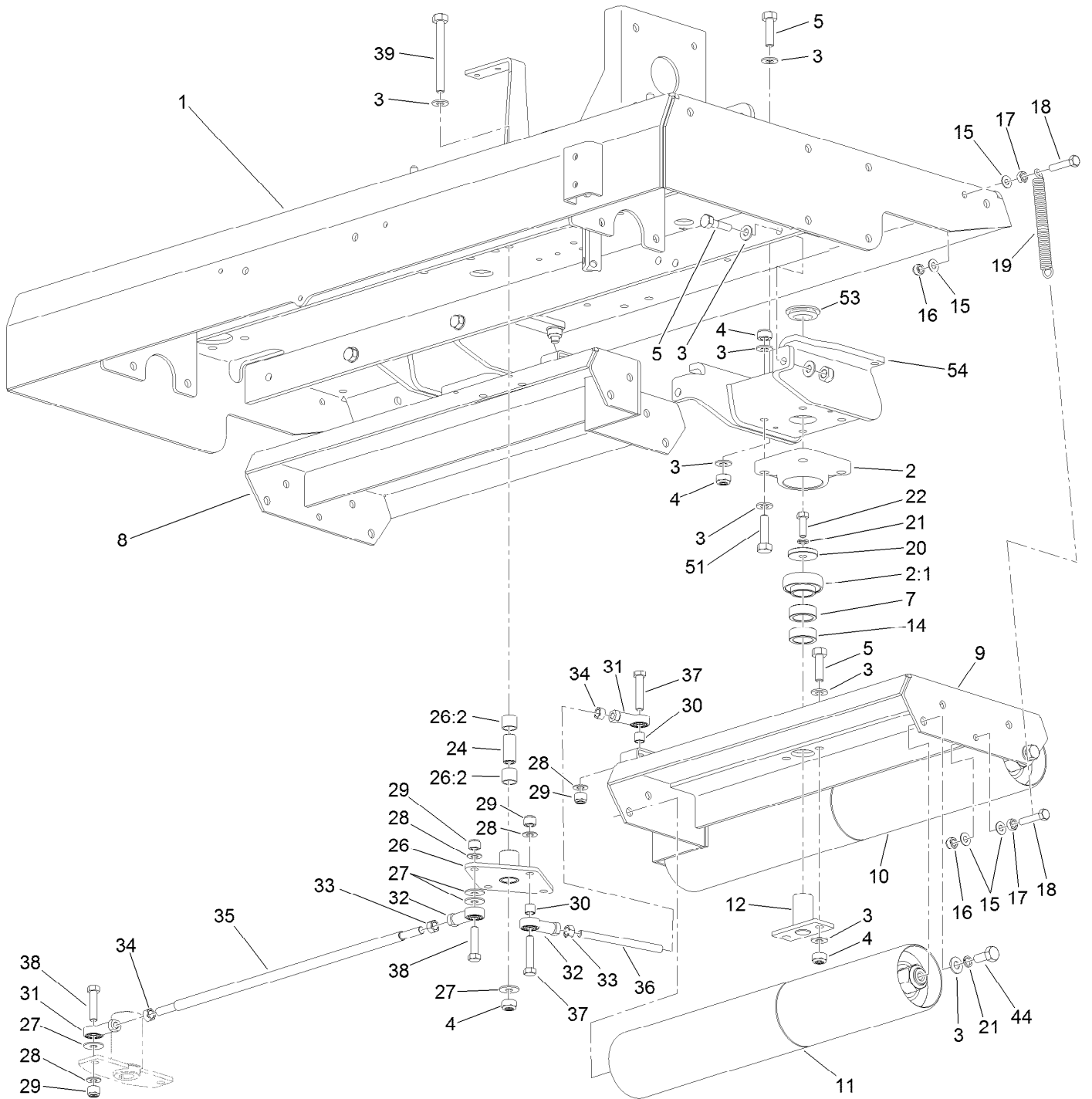
TAP: self tapping

TTH: torx truss head

Contents

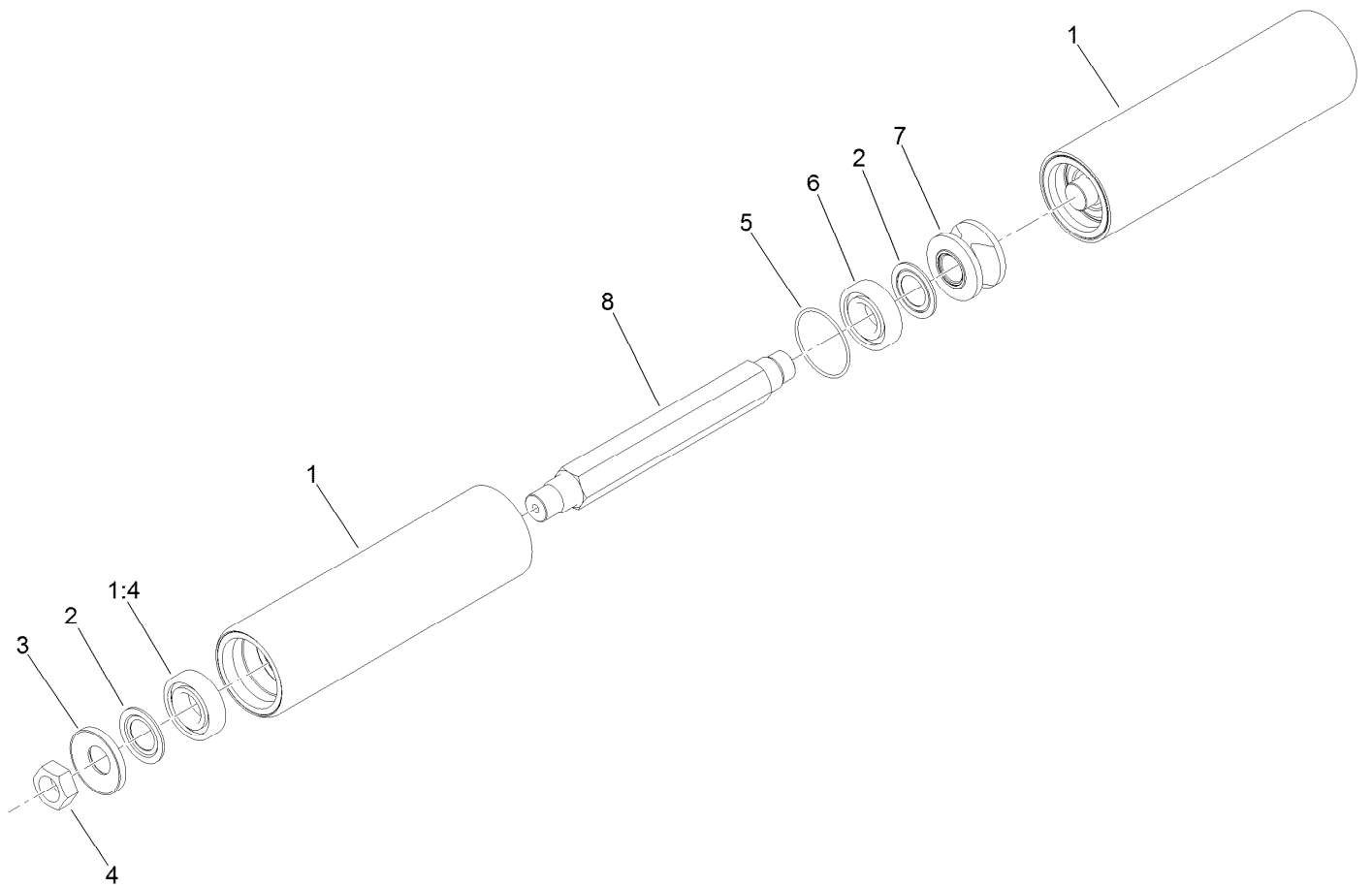
Steering Roller Assembly	4
Complete Long Steering Roller Assembly No. 127-7958	6
Complete Short Steering Roller Assembly No. 127-7963	7
Hydraulic Tank and Hose Assembly	8
Drive Roller Assembly	9
Drive Roller Assembly No. 111-5789	10
Engine Assembly	11
Lifting Mechanism Assembly	12
Steering Wheel Assembly	13
Hitch Assembly	14
Seat Assembly	16
Transmission Control Assembly	18
Transmission Assembly No. 111-6000	20
Cylinder Head Assembly	22
Cylinder Barrel Assembly	24
Crankcase Cover Assembly	26
Crankshaft Assembly	28
Piston and Connecting Rod Assembly	30
Camshaft Assembly	32
Recoil Starter Assembly	34
Fan Cover Assembly	36
Carburetor Assembly	38
Air Cleaner Assembly	40
Muffler Assembly	42
Fuel Tank Assembly	44
Flywheel Assembly	46
Ignition Coil Assembly	48
Control Assembly	50
Label Assembly	52
Wrench	54
Decal Assembly	56
Gasket Kit	58
Attachments and Accessories	60

Steering Roller Assembly



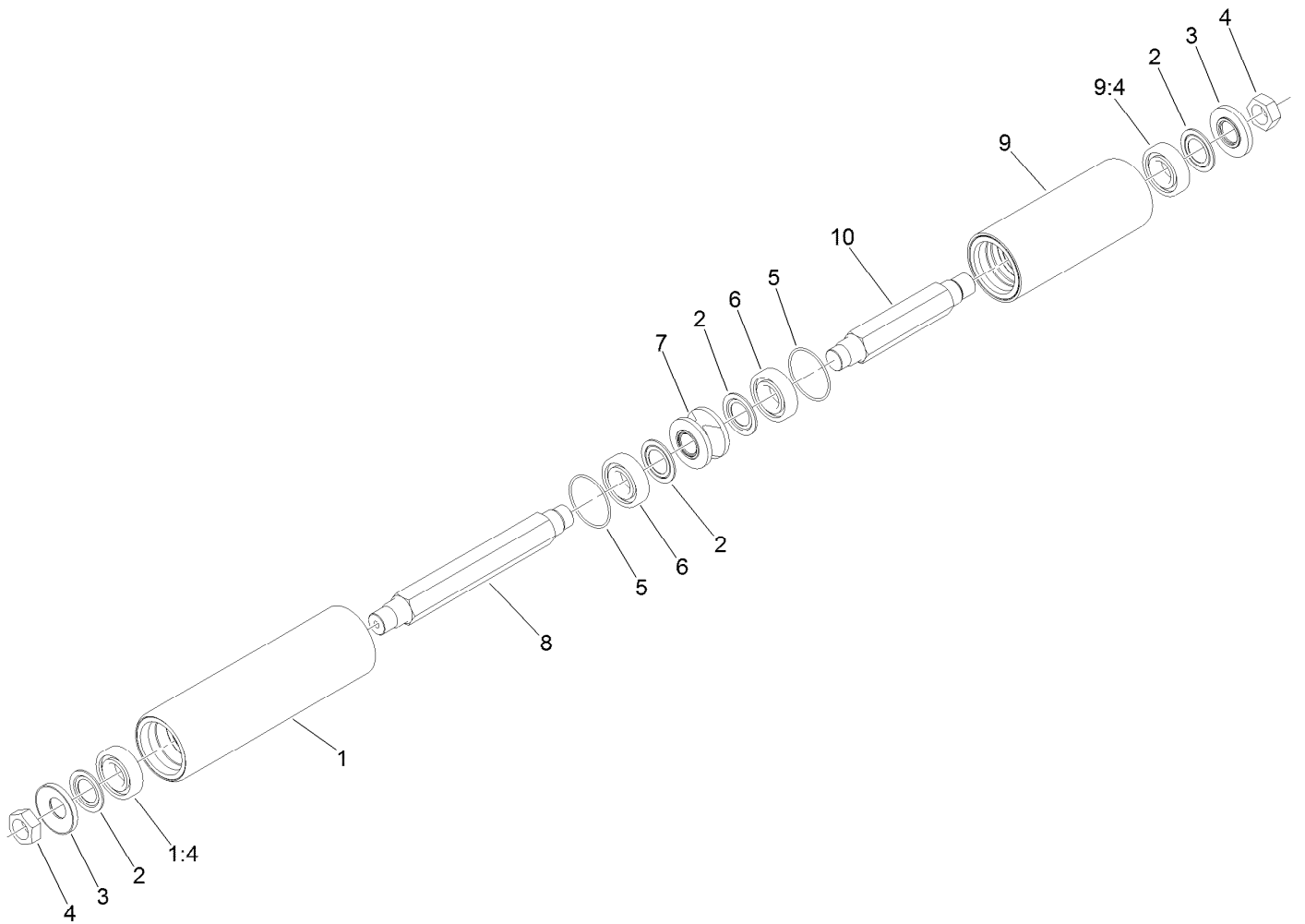
Steering Roller Assembly (continued)

<i>Ref.</i>	<i>Part Number</i>	<i>Qty.</i>	<i>Description</i>	<i>Ref.</i>	<i>Part Number</i>	<i>Qty.</i>	<i>Description</i>
1	127-5836-01	1	Chassis-Roller	22	03162	2	Screw-HH
2	111-5753	2	Bearing Housing ASM	24	127-5938	1	Bushing-Pivot
2:1	111-5779	1	Bearing	26	127-5949	1	Steering Disc ASM
3	ZWQ1J000U	33	Washer-Plain	26:2	256-311	2	Bushing-Split
4	ZNN1J000U	21	Nut-Hex, NI	27	HY03355	4	Washer-Plated
5	09394	8	Bolt	28	09271	6	Washer-Plain
7	111-5680	2	Bushing-Axle	29	09216	6	Nut-Hex, NI
8	111-5707-01	1	Head-Steering, Front	30	111-5684	4	Bushing
9	111-5708-01	1	Head-Steering, Rear	31	111-5748	3	Joint-Ball
10	127-7958	2	Complete Long Steering Roller ASM	32	111-5959	3	Joint-Ball
11	127-7963	2	Complete Short Steering Roller ASM	33	111-5855	3	Nut-Hex, LH
12	111-5688	2	Shaft-Pivot	34	09213	3	Nut
14	111-6108	2	Bushing-Axle	35	111-5692	1	Rod-Pivot, Steering
15	09475	8	Washer	36	111-5690	2	Arm-Linkage
16	09441	4	Nut-Hex, NI	37	09119	4	Bolt
17	ZNH1H000U	4	Nut-Hex	38	09118	2	Bolt-HH
18	09681	4	Bolt	39	ZBH1J095U	1	Bolt-HH
19	111-5883	2	Spring-Extension	44	09395	8	Screw-HH
20	111-5674	2	Collar-Fixing	51	09611	8	Bolt-HH
21	09480	10	Washer-Lock	53	107-3532	2	Grommet
				54	131-1572-01	2	Support-Roller



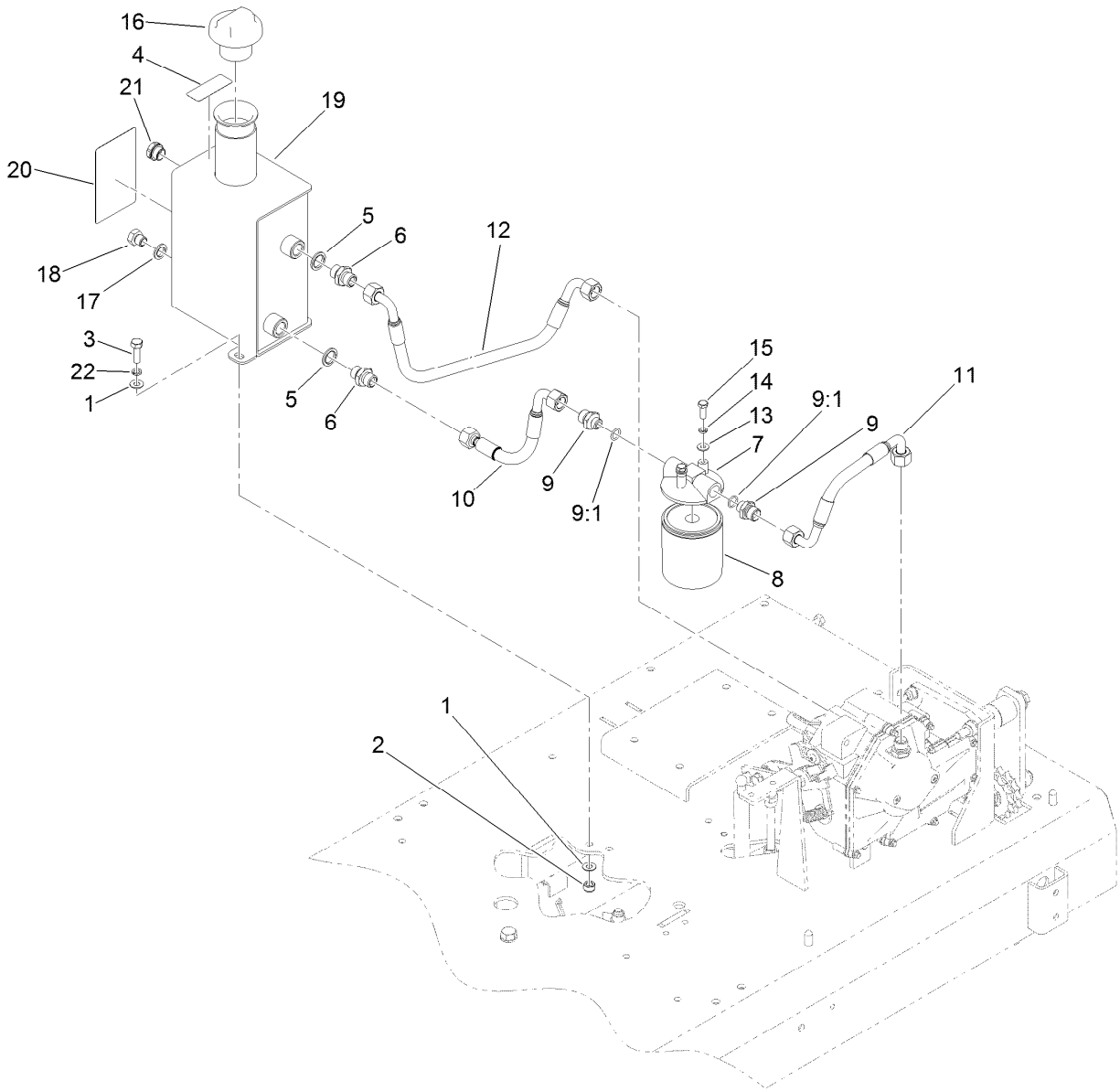
Complete Long Steering Roller Assembly No. 127-7958

<i>Ref.</i>	<i>Part Number</i>	<i>Qty.</i>	<i>Description</i>
1	127-7966	2	Long Steering Roller ASM
1:4	115-3296	1	Bearing-Sealed
2	115-3299	4	Seal-Flocked
3	127-7959	2	Spacer-Bearing
4	3296-49	2	Nut-Lock, NI
5	117-8177	2	O-Ring
6	115-3296	2	Bearing-Sealed
7	127-7960	1	Sleeve-Roller
8	127-7961	2	Shaft-Roller



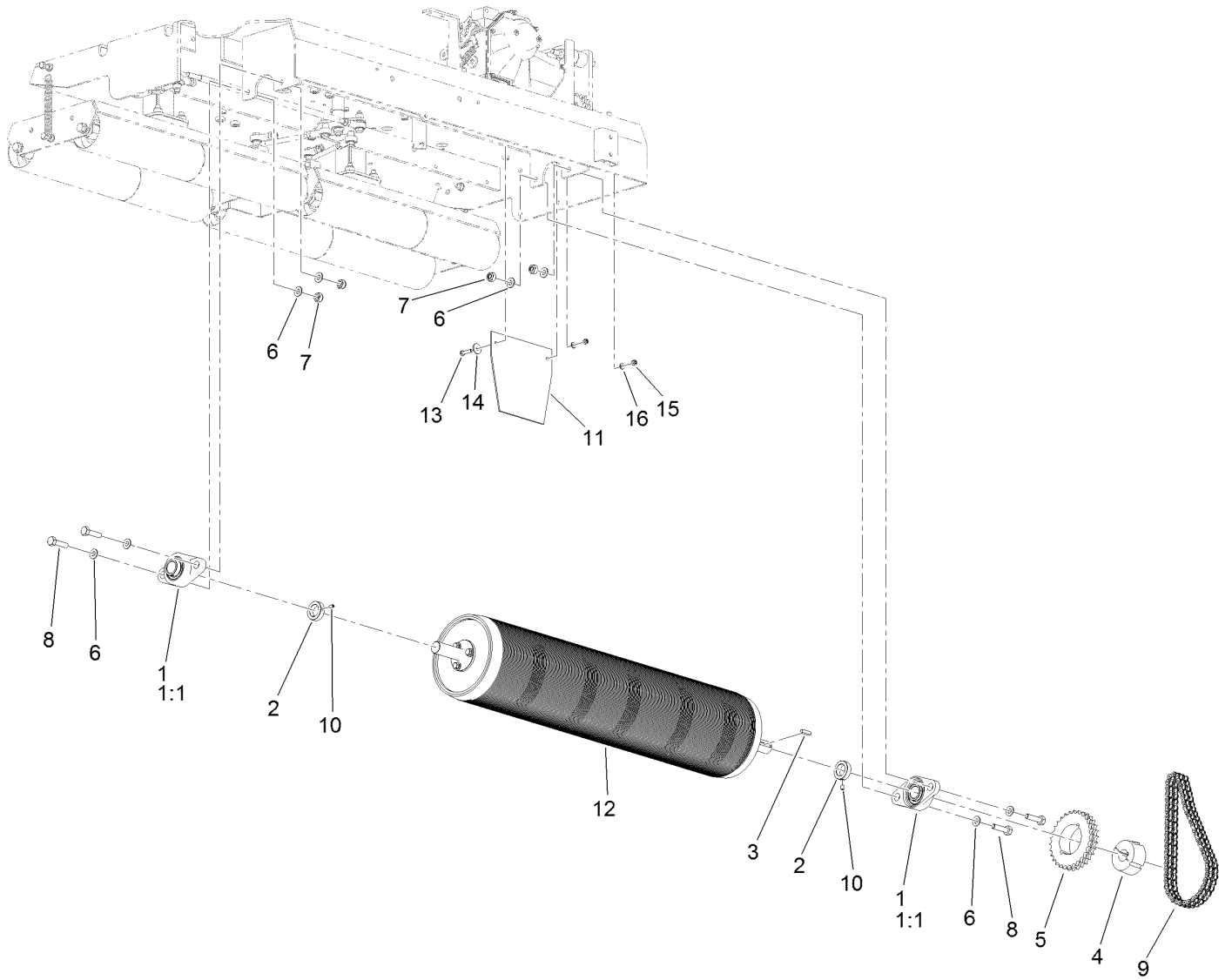
Complete Short Steering Roller Assembly No. 127-7963

Ref.	Part Number	Qty.	Description
1	127-7966	1	Long Steering Roller ASM
1:4	115-3296	1	Bearing-Sealed
2	115-3299	4	Seal-Flocked
3	127-7959	2	Spacer-Bearing
4	3296-49	2	Nut-Lock, NI
5	117-8177	2	O-Ring
6	115-3296	2	Bearing-Sealed
7	127-7960	1	Sleeve-Roller
8	127-7961	1	Shaft-Roller
9	127-7967	1	Short Steering Roller Assy
9:4	115-3296	1	Bearing-Sealed
10	127-7962	1	Shaft-Roller Short



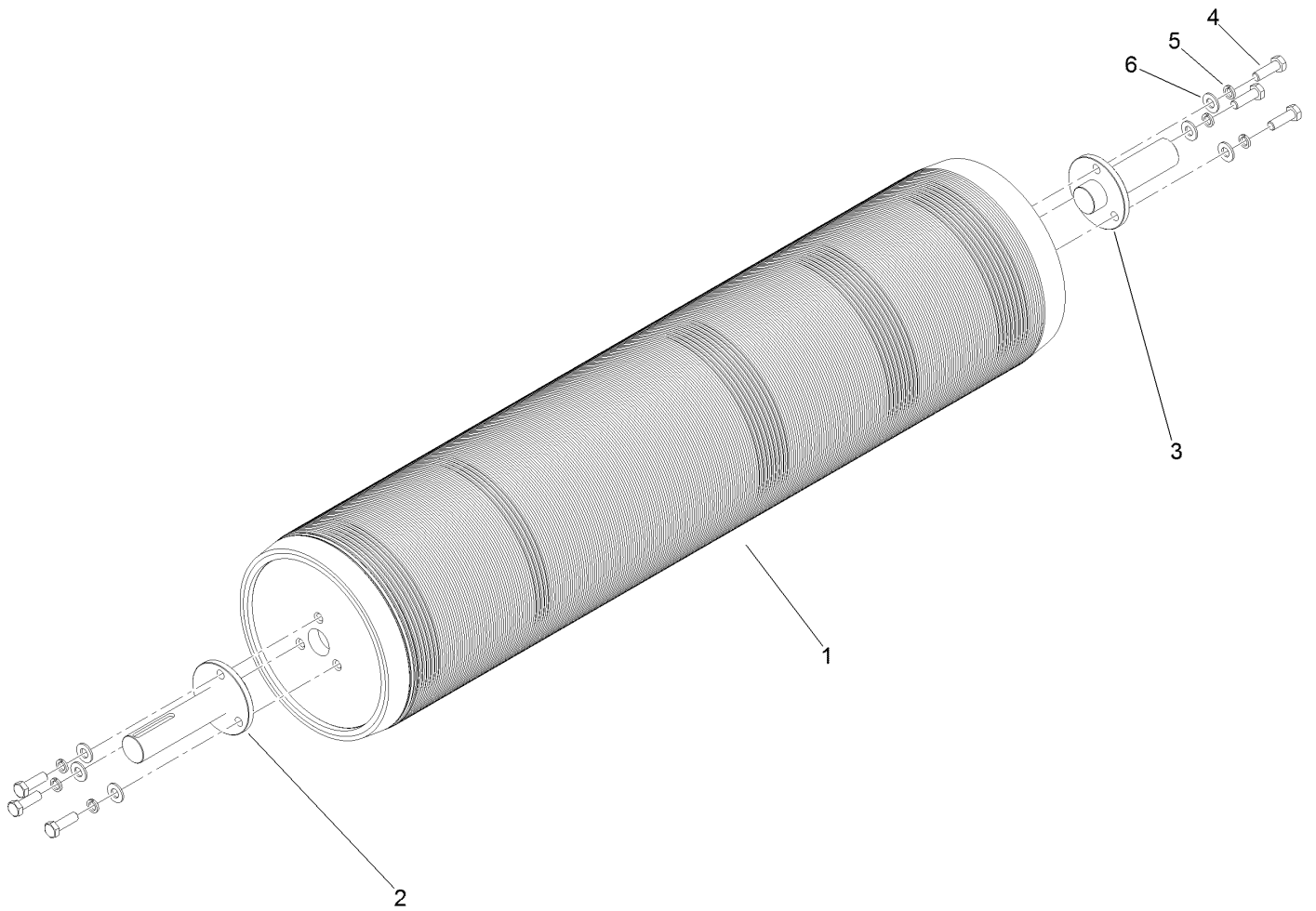
Hydraulic Tank and Hose Assembly

<i>Ref.</i>	<i>Part Number</i>	<i>Qty.</i>	<i>Description</i>	<i>Ref.</i>	<i>Part Number</i>	<i>Qty.</i>	<i>Description</i>
1	09475	4	Washer	12	111-5958	1	HYD Hose ASM
2	09441	2	Nut-Hex, NI	13	09261	2	Washer-Plain
3	03162	2	Screw-HH	14	09264	2	Washer-Spring
4	93-6686	1	Decal-Oil, HYD	15	09821	2	Screw-HH
5	10-06-031	2	Seal-Dowty	16	111-5749	1	Cap-Tank
6	10-06-042	2	Adaptor-Bspp	17	10-06-030	1	Seal-Dowty
7	111-5752	1	Head-Filter, Oil	18	30-06-200	1	Plug-HYD
8	111-5750	1	Cartridge-Filter, Oil	19	127-5868	1	Tank-Oil
9	111-4788	2	Fitting-Straight	20	127-5832	1	Decal-Warning
9:1	70-06-165	1	Seal-O Ring	21	127-5834	1	Glass-Sight
10	111-5956	1	HYD Hose ASM	22	03469	2	Washer-Spring
11	111-5957	1	HYD Hose ASM				



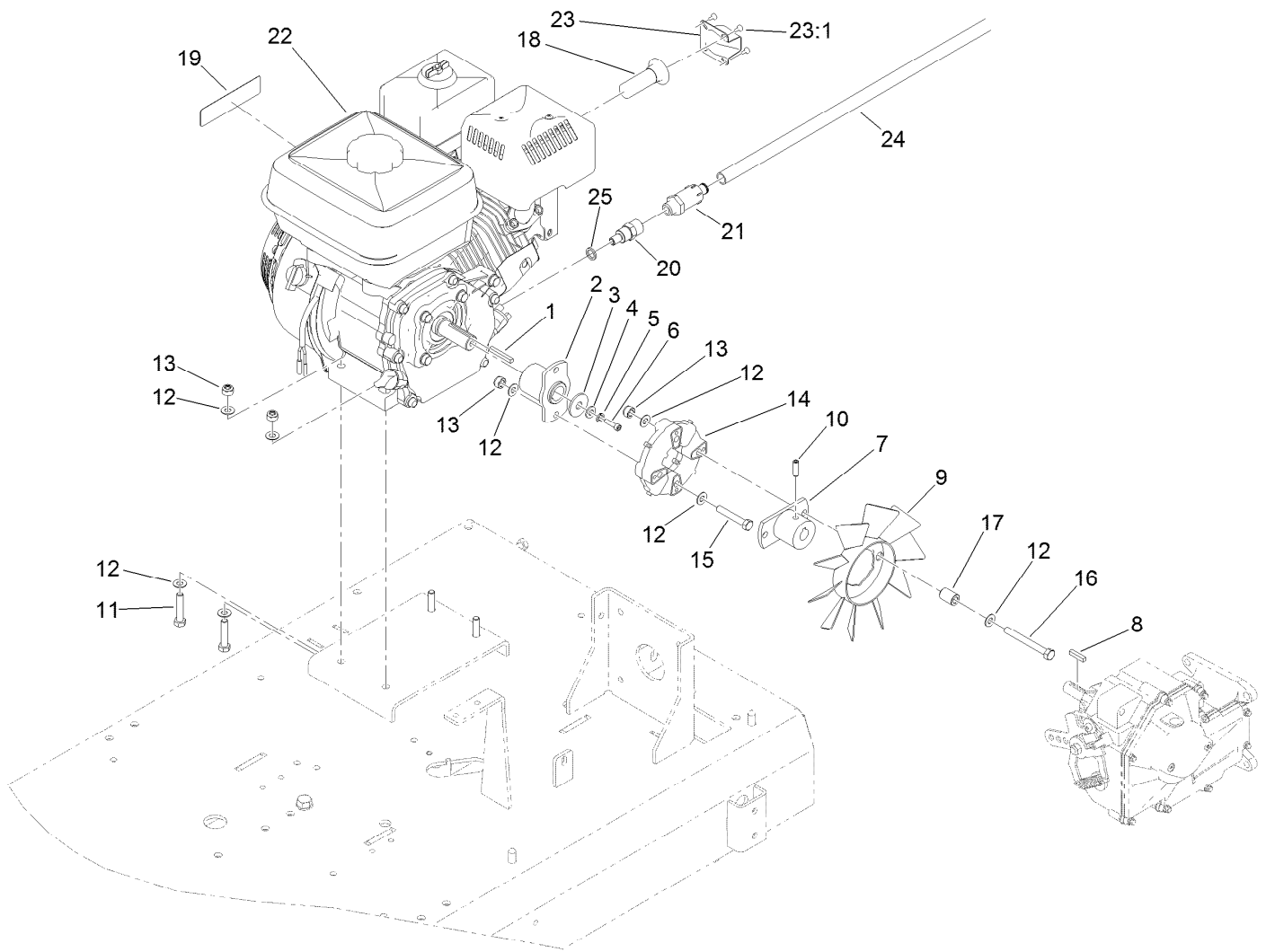
Drive Roller Assembly

<i>Ref.</i>	<i>Part Number</i>	<i>Qty.</i>	<i>Description</i>	<i>Ref.</i>	<i>Part Number</i>	<i>Qty.</i>	<i>Description</i>
1	111-5744	2	Bearing ASM	9	127-5865	1	Chain-Drive
1:1	111-5758	1	Bearing	10	09619	2	Grubscrew
2	111-5785	2	Collar	11	111-7089	1	Guard-Chain, Rubber
3	04522	1	Key-Square	12	111-5789	1	Drive Roller ASM
4	111-5762	1	Hub-Taperlock	13	09364	2	Screw-HH
5	111-5763	1	Sprocket-30 Tooth, Duplex	14	09263	2	Washer
6	09491	8	Washer-Plain	15	09438	2	Nut-Nyloc
7	09456	4	Nut	16	09472	2	Washer-Plain
8	33118-045	4	Screw-HH				



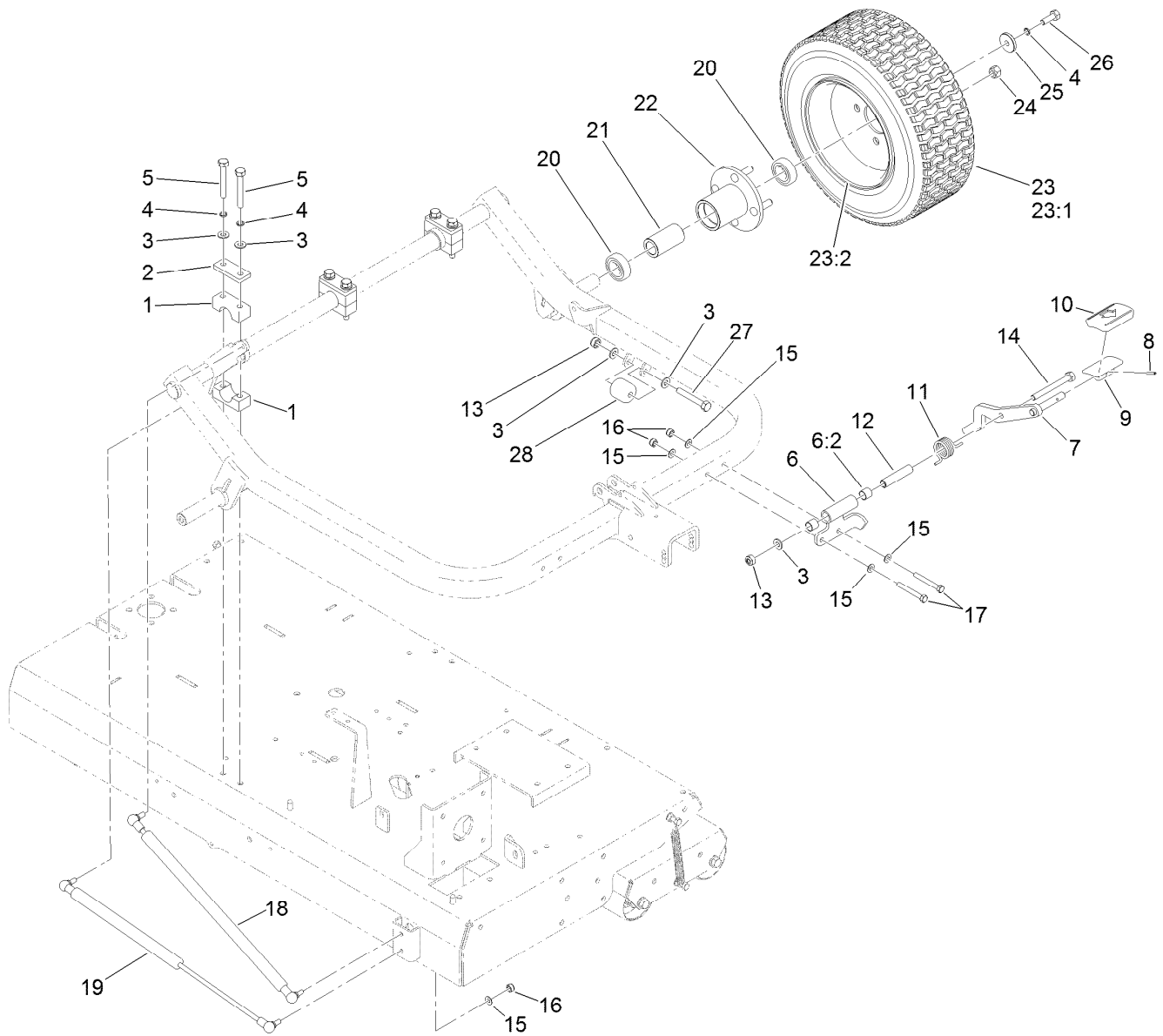
Drive Roller Assembly No. 111-5789

Ref.	Part Number	Qty.	Description
1	111-6857	1	Drum-Roller, Drive
2	111-5733	1	Axle-Roller, Keyed
3	111-5734	1	Axle-Roller
4	09073	6	Setscrew
5	03469	6	Washer-Spring
6	09266	6	Washer-Plain



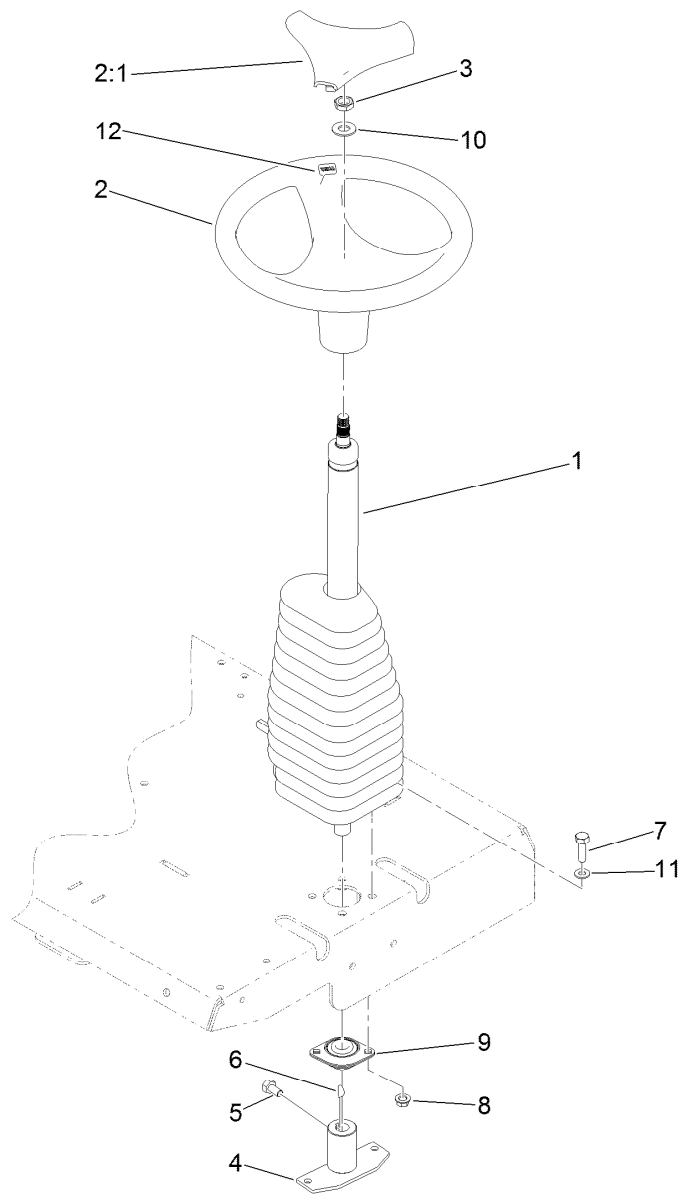
Engine Assembly

<i>Ref.</i>	<i>Part Number</i>	<i>Qty.</i>	<i>Description</i>	<i>Ref.</i>	<i>Part Number</i>	<i>Qty.</i>	<i>Description</i>
1	103-2739	1	Key	14	119-0652	1	Coupler-Rubber
2	127-5799	1	Collar-Engine	15	ZBH1H050U	2	Bolt
3	93-8806	1	Washer-Hardened	16	ZBH1H075U	2	Bolt
4	ZWP1H000U	1	Washer-Plain	17	127-5847	2	Bushing
5	03469	1	Washer-Spring	18	111-6526	1	Arrester-Spark
6	ZCS1H030U	1	Screw-Cap	19	117-2718	1	Decal-Arrester, Spark
7	111-5730	1	Collar-Pump	20	111-7088	1	Adaptor-Drain, Oil
8	111-5724	1	Key-Square	21	92-6877	1	Valve-Drain, Oil
9	127-5846	1	Fan	22	111-6476	1	Engine-Honda
10	100-7594	1	Screw-Set	23	111-5980	1	Exhaust Deflector ASM
11	09681	4	Bolt	23:1	111-5979	4	Screw-TAP
12	09475	16	Washer	24	103-1964	1	Hose-Drain, Oil
13	09441	8	Nut-Hex, NI	25	111-7401	1	Washer-Plug, Sump



Lifting Mechanism Assembly

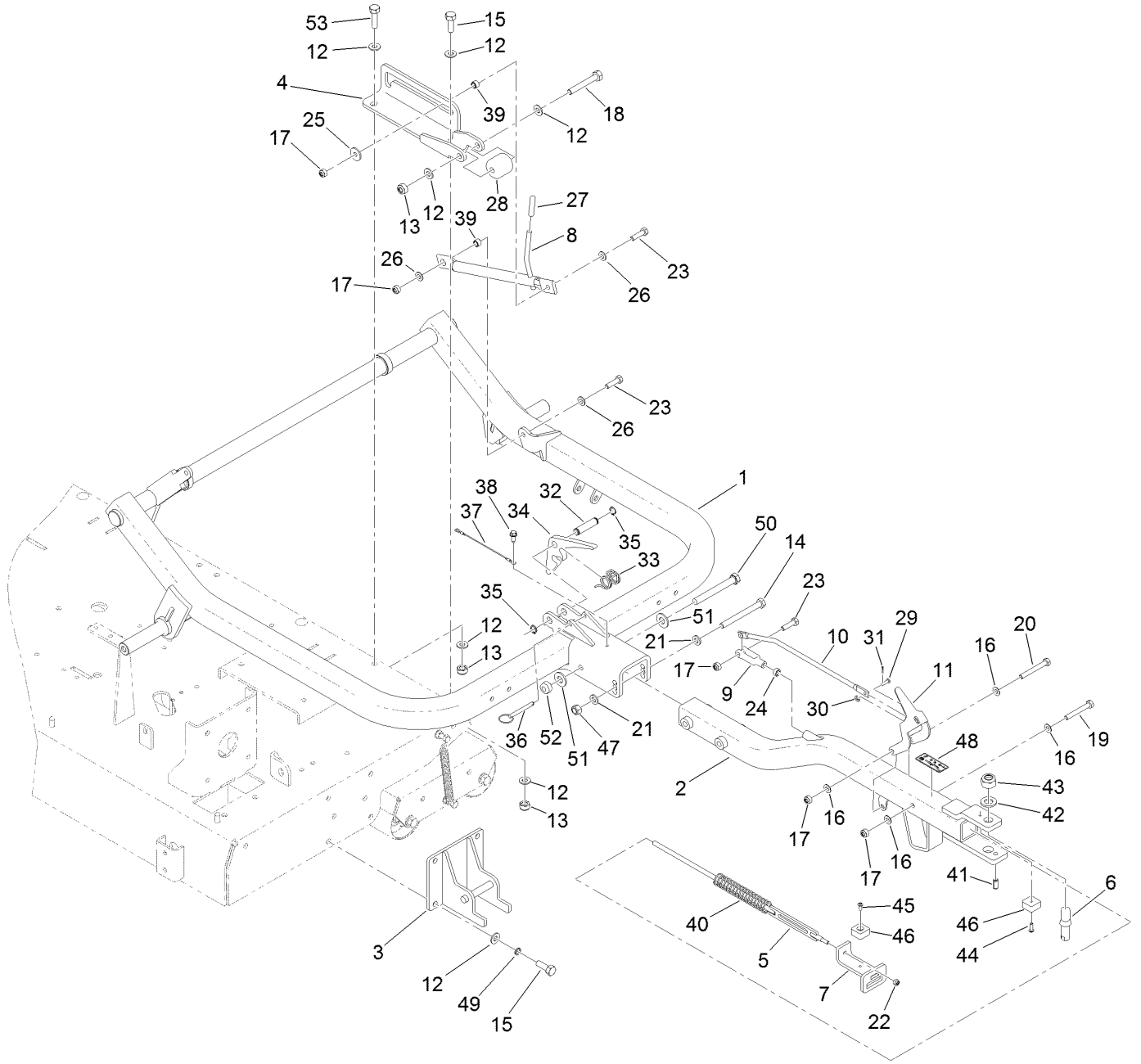
Ref.	Part Number	Qty.	Description	Ref.	Part Number	Qty.	Description
1	127-8044	3	Clamp-Drawbar	16	09441	4	Nut-Hex, NI
2	111-5681	3	Plate-Clamp, Axle	17	ZBH1H065U	2	Bolt
3	ZWQ1J000U	5	Washer-Plain	18	127-1326	1	Damper
4	09480	8	Washer-Lock	19	125-5696	1	Spring-Gas
5	ZBH1J075U	6	Bolt-HH	20	63-07-009	4	Bearing
6	127-1351	1	Pedal Pivot ASM	21	111-5858	2	Spacer-Bearing
6:2	256-311	2	Bushing-Split	22	111-7103-03	2	Wheel Hub ASM
7	127-1349-01	1	Lever-Pedal	23	111-5678	2	Wheel And Tire ASM
8	32121-45	1	Pin-Spring	23:1	111-5755	1	Tyre
9	117-9507	1	Pedal-Accelerator	23:2	111-5756	1	Rim-Wheel
10	74-9100	1	Pad-Pedal, Forward	24	93-5268	8	Nut-Lug
11	127-1353	1	Spring-Torsion	25	111-5674	2	Collar-Fixing
12	127-1355	1	Spacer	26	09392	2	Screw-HH
13	ZNN1J000U	2	Nut-Hex, NI	27	09399	1	Bolt
14	ZBH1J095U	1	Bolt-HH	28	127-1342	1	Roller
15	09475	6	Washer				



Steering Wheel Assembly

Ref.	Part Number	Qty.	Description
1	127-5772	1	Column-Steering
2	98-1471	1	Wheel-Steering
2:1	98-1468	1	Cover-Wheel, Steering
3	110-8816	1	Nut-Hex
4	127-5776-01	1	Pivot-Steering
5	09391	1	Screw-HH
6	HY4325	1	Key-Woodruff
7	09394	4	Bolt
8	63-11-015	4	Nut-Flanged
9	127-5779	1	Bearing ASM
10	3256-27	1	Washer-Flat
11	ZWQ1J000U	4	Washer-Plain
12	98-1459	1	Decal

Hitch Assembly



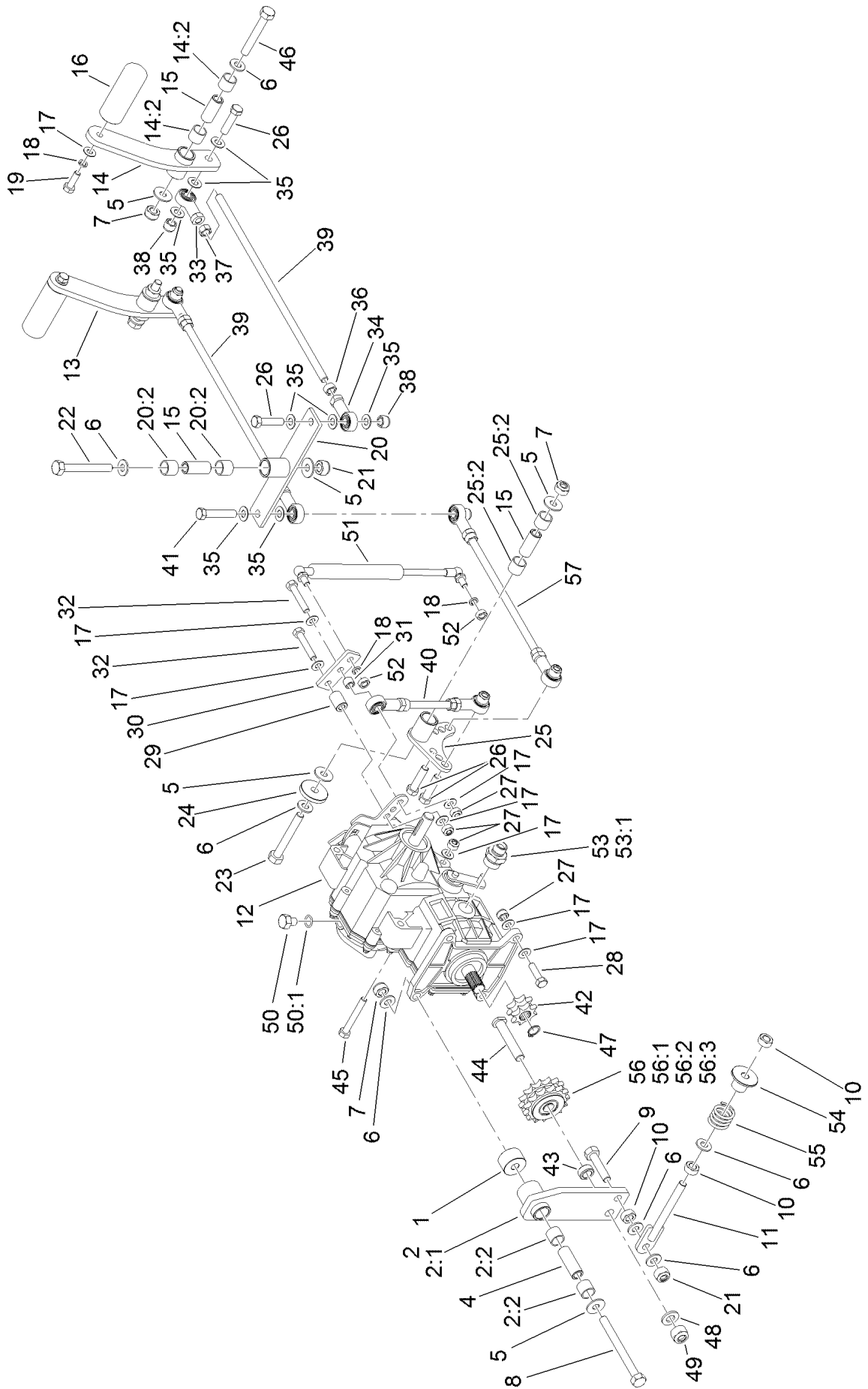
Hitch Assembly (continued)

<i>Ref.</i>	<i>Part Number</i>	<i>Qty.</i>	<i>Description</i>	<i>Ref.</i>	<i>Part Number</i>	<i>Qty.</i>	<i>Description</i>
1	125-5704-01	1	Hitch Pivot ASM	28	127-1342	1	Roller
2	125-5725-01	1	Hitch ASM	29	283-29	1	Pin-Clevis
3	125-5724-01	1	Bracket-Lock	30	3256-51	1	Washer-Flat
4	125-5717-01	1	Bracket-Slide	31	3272-1	1	Pin-Cotter
5	125-5743	1	Lever ASM	32	125-5731	1	Pin-Lock, Lever
6	127-5861	1	Pin-Tow	33	125-5723	1	Spring-Torsion
7	125-5741-01	1	Slide	34	125-5711-01	1	Latch-Hitch
8	125-5730-01	1	Lever	35	32151-61	2	Ring-Retaining
9	1-303105	1	Yoke-Adjustable	36	108-0094	1	Pin-Cotterless
10	127-1317	1	Wire-Form	37	28-8070	1	Lanyard
11	127-1321	1	Lever	38	32144-10	1	Screw-HWH
12	ZWQ1J000U	14	Washer-Plain	39	120-9697	2	Spacer
13	ZNN1J000U	4	Nut-Hex, NI	40	125-5737	1	Spring-Compression
14	127-5864	1	Screw-HH	41	32121-123	1	Pin-Roll
15	09392	5	Screw-HH	42	09491	1	Washer-Plain
16	09475	7	Washer	43	09456	1	Nut
17	09441	5	Nut-Hex, NI	44	119-7568	1	Screw-HSBH
18	09399	1	Bolt	45	127-5866	1	Screw-HSBH
19	09371	1	Bolt	46	94-1392	2	Pad-Rubber
20	ZBH1H065U	1	Bolt	47	131-1558	1	Nut-Lock
21	107-1413	2	Washer-Hardened	48	127-5885	1	Decal-Disconnect, Hitch
22	09438	1	Nut-Nyloc	49	09480	2	Washer-Lock
23	09369	3	Screw-HH	50	131-1557	1	Screw-HH
24	09207	1	Nut	51	87-7270	2	Washer-Thrust
25	1-603716	1	Washer-Friction	52	94-4307	1	Nut-Hex Lock
26	3256-23	3	Washer-Flat	53	09394	1	Bolt
27	125-5722	1	Cap-Flex				

Seat Assembly (continued)

<i>Ref.</i>	<i>Part Number</i>	<i>Qty.</i>	<i>Description</i>	<i>Ref.</i>	<i>Part Number</i>	<i>Qty.</i>	<i>Description</i>
1	111-5739	2	Washer-Rubber	36	09361	2	Screw-HH
2	127-5755-01	1	Support-Seat	37	3256-23	4	Washer-Flat
3	127-5775-01	1	Frame-Support, Rear	38	3274-10	4	Screw-HSH
4	127-5869	1	Cover-Transmission	39	120-2244	1	Hourmeter
5	09475	14	Washer	40	111-2337	1	Blank-Switch
6	03469	5	Washer-Spring	41	119-1728	2	Stud-1/4 Turn
7	03162	6	Screw-HH	42	119-1729	2	Retainer-Stud
8	09441	6	Nut-Hex, NI	43	119-1730	2	Receptacle-Clip, Mini
9	111-3728	2	Decal	44	127-0392	1	Decal-Hot Surface
11	127-5895	2	Decal	45	122-0190	1	Harness-Wire
12	107-1865	2	R-Clamp	46	HY3966	4	Tie-Cable
13	104-7050	1	Tube-Manual	47	09368	1	Screw-HH
14	104-7048	1	Cap-Housing	48	127-5928-01	1	Support Strut
15	ZWP1F000U	4	Washer-Plain	49	127-5867	1	Decal-Service
16	09438	6	Nut-Nyloc	49	127-5871	1	Decal-Service, Czech
17	09362	2	Screw-HH	49	127-5872	1	Decal-Reference, Danish
18	111-5646	2	Decal-Warning	49	127-5873	1	Decal-Reference, German
19	111-5649	1	Decal-Control, Pedal (Left)	49	127-5874	1	Decal-Reference, Spanish
20	111-5650	1	Decal-Control, Pedal (Right)	49	127-5875	1	Decal-Reference, Finnish
21	70-07-067	4	Tape-Slip, Anti	49	127-5876	1	Decal-Reference, French
22	50-08-001	1	Edging-Rubber	49	127-5877	1	Decal-Reference, Italian
23	127-5752-01	1	Pan-Seat	49	127-5878	1	Decal-Reference, Japanese
24	119-4483	1	Seat Adjuster Lever ASM	49	127-5879	1	Decal-Reference, Dutch
25	92-8990	1	Adjuster-Slave	49	127-5880	1	Decal-Reference, Norwegian
26	233-48	1	Knob	49	127-5881	1	Decal-Reference, Polish
27	127-5759-01	1	Bracket-Seat, RH	49	127-5882	1	Decal-Reference, Portuguese
28	127-5754-01	1	Bracket-Seat, LH	49	127-5883	1	Decal-Reference, Swedish
29	111-5742	1	Seat ASM	52	33104-016	4	Screw-HHF
30	09472	4	Washer-Plain	53	88-7860	2	Spacer
31	ZBH1F025U	2	Bolt-HH	54	127-8010	1	Decal-Adjust, Tension (Chain)
32	104-8300	10	Nut-Flange, NI				
33	68-3270	2	Bumper-Rubber				
34	09681	1	Bolt				
35	66-2630	1	Latch-Seat				

Transmission Control Assembly

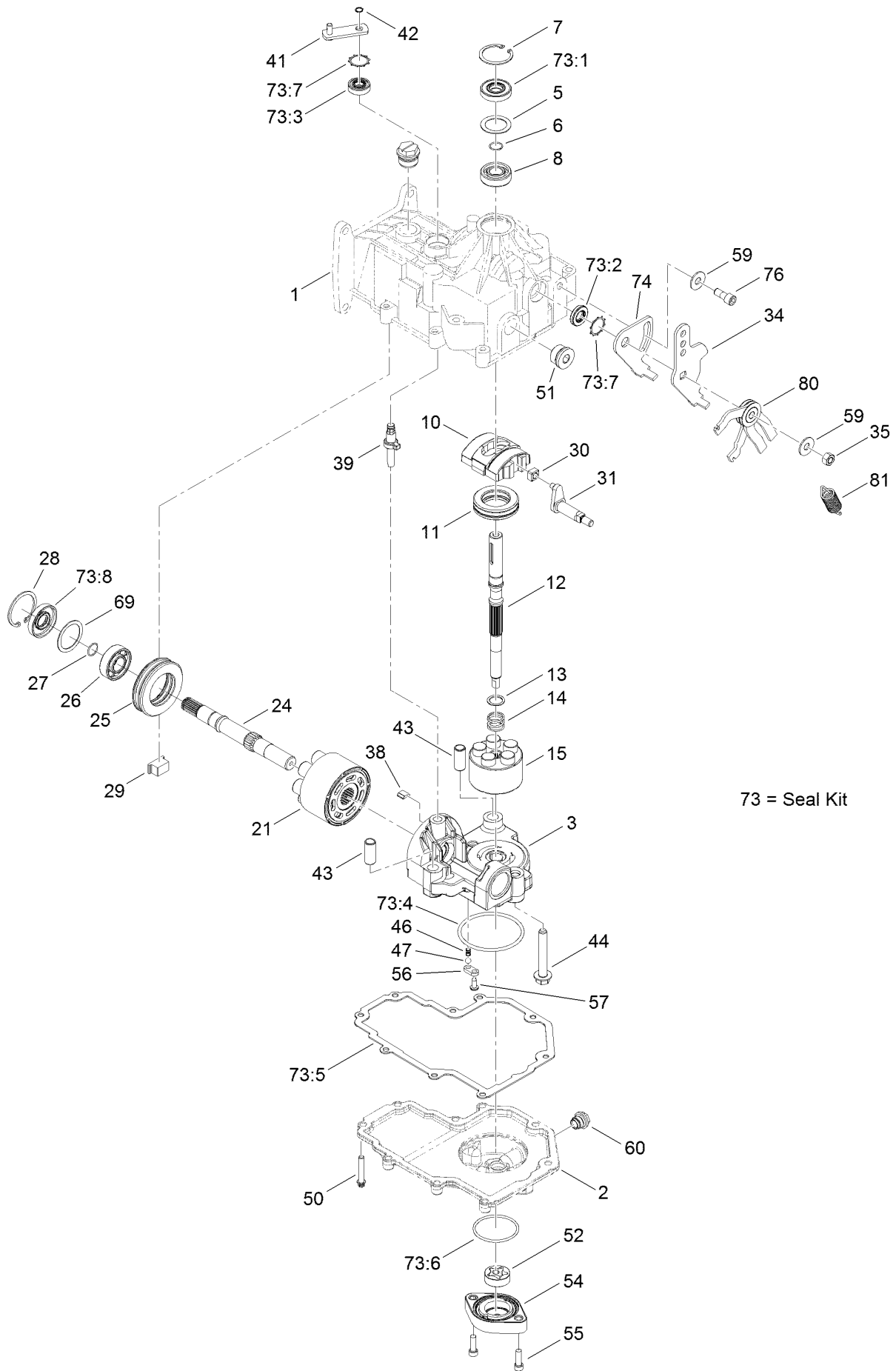


Transmission Control Assembly (continued)

<i>Ref.</i>	<i>Part Number</i>	<i>Qty.</i>	<i>Description</i>	<i>Ref.</i>	<i>Part Number</i>	<i>Qty.</i>	<i>Description</i>
1	111-5672	1	Spacer	29	111-5722	1	Spacer-Damper
2	127-7972	1	Idler Arm ASM	30	111-5711	1	Plate-Damper
2:1	127-7970	1	Arm-Idler	31	111-5792	1	Bushing
2:2	256-311	2	Bushing-Split	32	09654	2	Bolt
4	127-7969	1	Bushing-Pivot	33	111-5959	4	Joint-Ball
5	HY03355	6	Washer-Plated	34	111-5748	4	Joint-Ball
6	ZWQ1J000U	8	Washer-Plain	35	09271	14	Washer-Plain
7	ZNN1J000U	4	Nut-Hex, NI	36	09213	4	Nut
8	09405	1	Bolt	37	111-5855	4	Nut-Hex, LH
9	ZDH1J045U	1	Screw-HH	38	09216	6	Nut-Hex, NI
10	09449	3	Nut	39	111-5682	2	Rod-Linkage
11	111-5736	1	Tensioning Rod ASM	40	111-5690	1	Arm-Linkage
12	111-6000	1	Transmission ASM	41	09121	1	Bolt
13	127-5948	1	Left Hand Motion Pedal ASM	42	127-5870	1	Sprocket-8 Tooth
13:2	256-311	2	Bushing-Split ●	43	111-5712	1	Bushing-Idler, Gear
14	127-5947	1	Right Hand Motion Pedal ASM	44	111-5723	1	Bolt-Sprocket, Idler
14:2	256-311	2	Bushing-Split	45	09371	1	Bolt
15	127-5938	4	Bushing-Pivot	46	09399	2	Bolt
16	111-5727	2	Pedal	47	111-6009	1	Circlip-EXT
17	09475	14	Washer	48	HY09485	1	Washer-Plain
18	03469	4	Washer-Spring	49	ZNN1L000U	1	Nut-Nyloc
19	03162	2	Screw-HH	50	111-4788	1	Fitting-Straight
20	127-5946	1	Pedal Rod Pivot ASM	50:1	70-06-165	1	Seal-O Ring
20:2	256-311	2	Bushing-Split	51	127-5896	1	Damper
21	09447	2	Nut	52	ZNH1H000U	2	Nut-Hex
22	09404	1	Bolt	53	70-06-053	1	Adaptor-Boss
23	ZBH1J075U	1	Bolt-HH	53:1	63-06-111	1	Seal-O Ring
24	111-5674	1	Collar-Fixing	54	127-5829	1	Spacer
25	127-7950	1	Lever Quadrant ASM	55	127-5849	1	Spring-Compression
25:2	256-311	2	Bushing-Split	56	111-5768	1	Idler Sprocket ASM
26	09118	5	Bolt-HH	56:1	111-6116	1	Sprocket-Idler, 15T
27	09441	6	Nut-Hex, NI	56:2	111-6115	1	Spacer-Sprocket, Idler
28	09369	3	Screw-HH	56:3	411027	2	Bearing
				57	111-5697	1	Rod-Linkage, Long

● Not illustrated

Transmission Assembly No. 111-6000

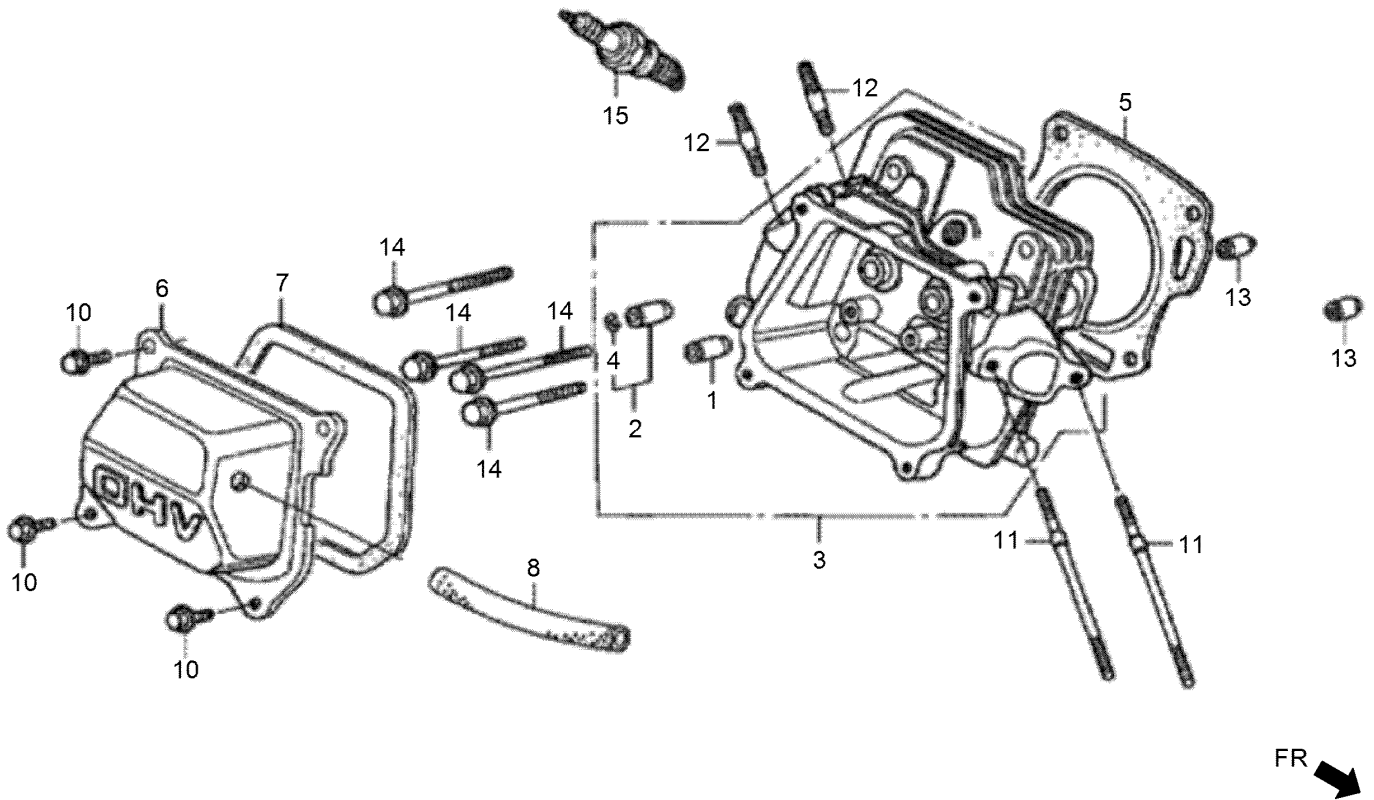


Transmission Assembly No. 111-6000 (continued)

<i>Ref.</i>	<i>Part Number</i>	<i>Qty.</i>	<i>Description</i>	<i>Ref.</i>	<i>Part Number</i>	<i>Qty.</i>	<i>Description</i>
1		1	Housing-Upper ●	43	94-1927	2	Pin
2		1	Housing-Lower ●	44	94-6926	3	Bolt
3	125-9162	1	Center Section Kit	46	108-8548	1	Spring-Helical
5	104-2104	1	Spacer	47	108-8549	1	Ball-1/4 Inch
6	119-5531	1	Ring-Retaining, Wire	50	94-1926	9	Bolt
7	119-5533	1	Ring-Retaining	51	125-9168	1	Plug
8	119-5530	1	Bearing-Ball	52	104-2122	1	Gerotor ASM
10	94-1907	1	Swashplate-Variable	54		1	Housing-Pump, Charge ●
11	94-6922	1	Bearing-Thrust	55	106-8758	2	Screw-HSH
12	125-9163	1	Shaft-Input	56	108-8550	1	Plate-Relief
13	120-5538	1	Washer	57	112-5910	1	Bolt-TAP
14	120-5537	1	Spring-Compression	59	5-4460	1	Washer-Pivot
15	103-2666	1	Cylinder Block Kit	60		1	Plug ●
21	94-1913	1	Cylinder Block ASM	69	104-5308	1	Spacer
24	125-9164	1	Shaft-Output	73	125-9176	1	Seal Kit
25	94-6923	1	Bearing-Thrust	73:1	119-5532	1	Seal-Lip
26	104-5311	1	Bearing-Ball	73:2	125-9166	1	Seal-Lip
27	104-5307	1	Ring-Retaining	73:3	92-6545	1	Seal-Lip
28	104-5309	1	Ring-Retaining	73:4	108-8545	1	O-Ring
29	125-9165	1	Retainer-Bearing, Motor	73:5		1	Gasket ●
30	94-1910	1	Guide-Slot	73:6	106-8757	1	O-Ring
31	104-2112	1	Trunnion ASM	73:7	125-9175	2	Ring-Retaining, Star
34	125-9167	1	Arm-Control	73:8	104-5310	1	Seal-Lip
35	32128-16	1	Nut-HHF	74	125-9177	1	Arm-Return
38	112-5892	1	Bypass Plate Kit	76	125-9178	1	Screw
39	94-1914	1	Actuator-Bypass	80	125-9179	1	Scissor Arm ASM
41	104-2117	1	Arm-Bypass	81	114-8462	1	Spring-Extension
42	936109	1	Ring-Retaining				

● Not serviced separately

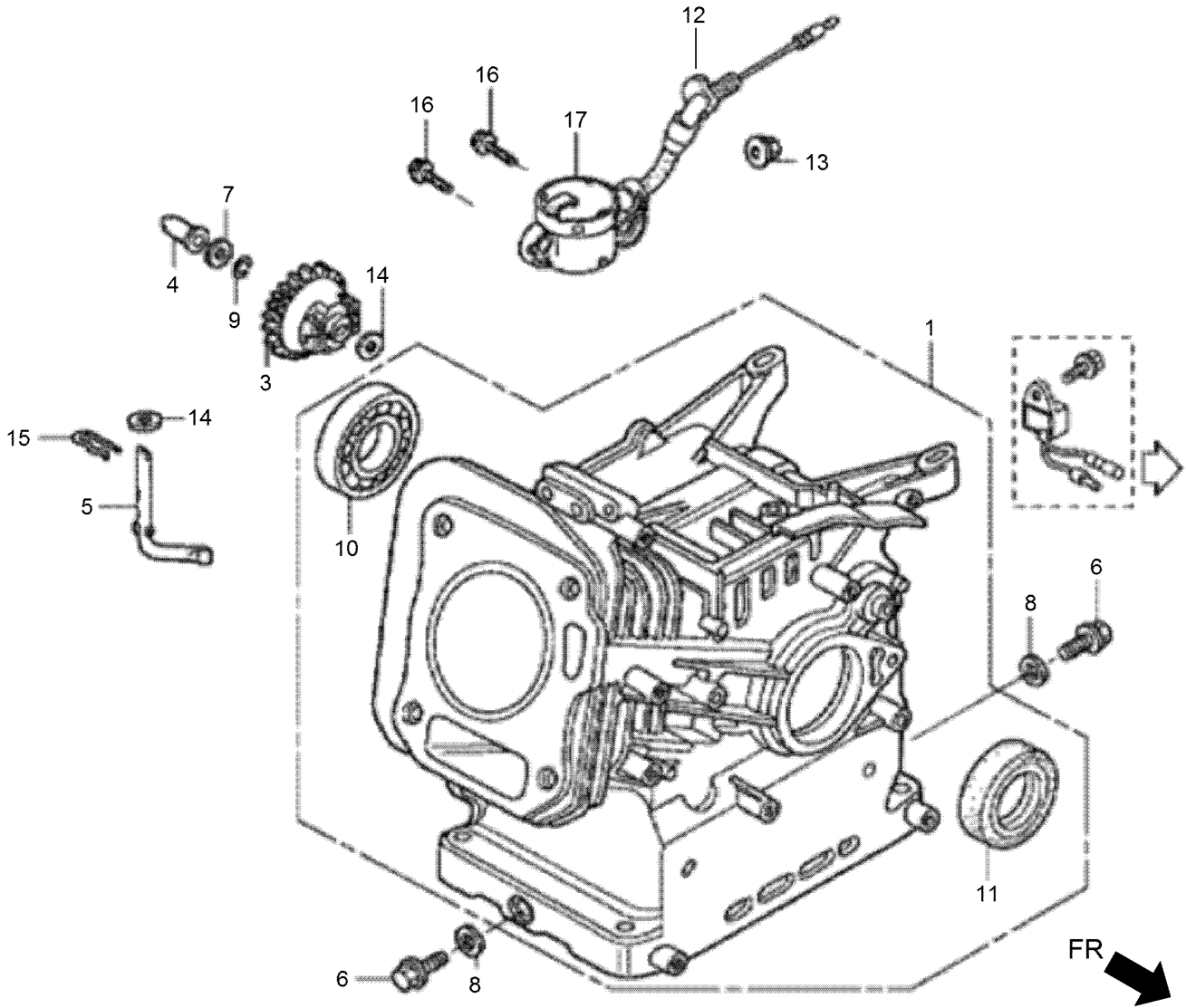
Cylinder Head Assembly



Cylinder Head Assembly (continued)

<i>Ref.</i>	<i>Part Number</i>	<i>Qty.</i>	<i>Description</i>	<i>Ref.</i>	<i>Part Number</i>	<i>Qty.</i>	<i>Description</i>
1	132-0118	1	Guide-Intake Valve	8	132-0234	1	Tube-Breather
2	132-0119	1	Guide-Exhaust Valve	10	132-4880	4	Bolt-Flange-6X12
3	132-0124	1	Cylinder Head ASM	11	132-0612	2	Bolt-Stud-6X112
4	132-0125	1	Clip-Valve Guide	12	132-0615	2	Bolt-Stud-8X32
5	132-0126	1	Gasket-Cylinder Head	13	132-0697	2	Dowel Pin-10X16
6	132-0127	1	Head Cover ASM	14	131-8226	4	Bolt-Flange-8X60
7	132-0133	1	Packing-Head Cover	15	131-8233	1	Sparkplug

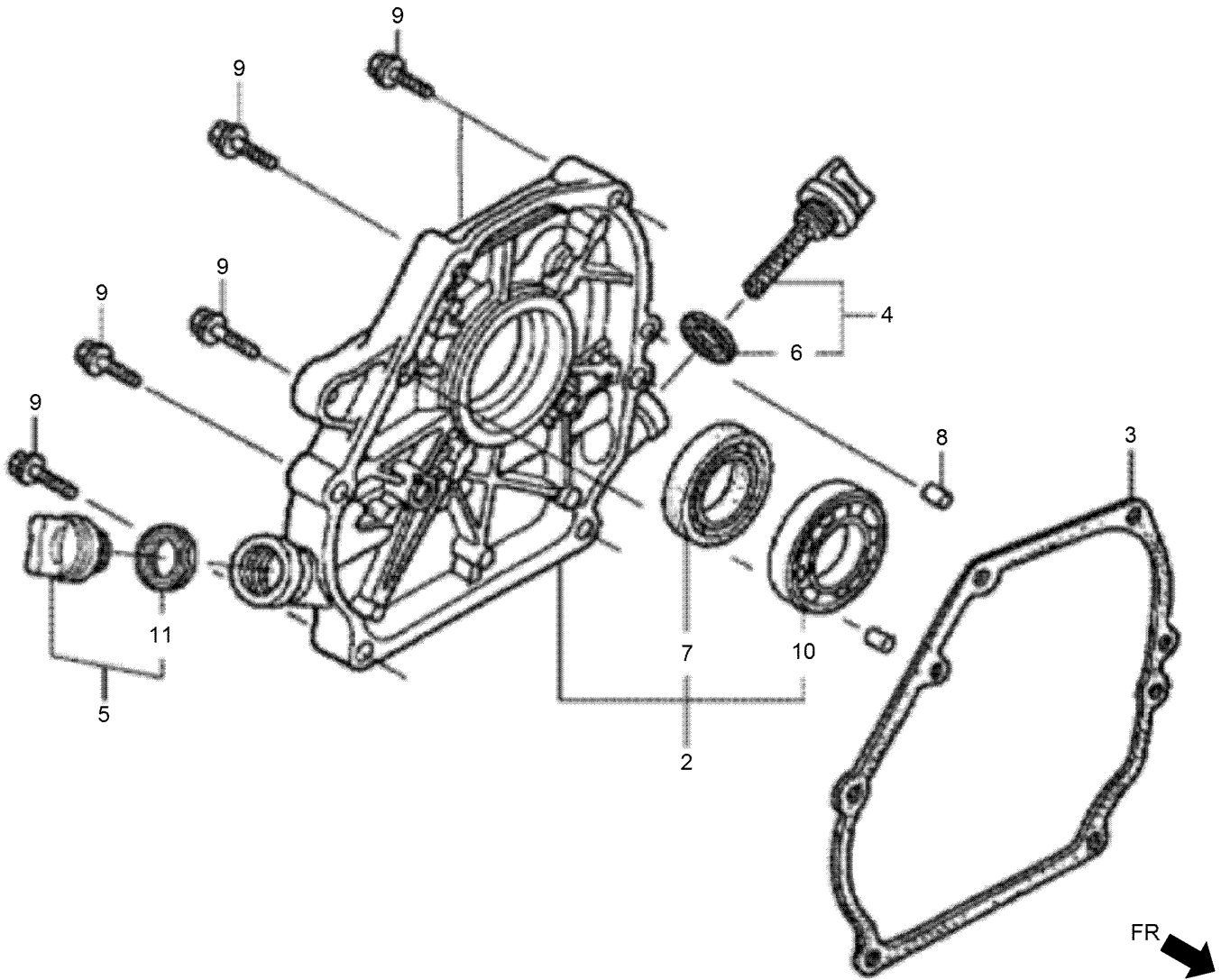
Cylinder Barrel Assembly



Cylinder Barrel Assembly (continued)

<i>Ref.</i>	<i>Part Number</i>	<i>Qty.</i>	<i>Description</i>	<i>Ref.</i>	<i>Part Number</i>	<i>Qty.</i>	<i>Description</i>
1	132-0113	1	Barrel ASM-Cylinder	10	132-0650	1	Bearing-Radial Ball
3	132-0294	1	Governor ASM	10	132-0649	1	Bearing-Radial Ball
4	132-0304	1	Slider-Governor	11	132-0654	1	Oil Seal-25X41X6
5	132-0307	1	Shaft-Governor Arm	12	132-0668	1	O-Ring-14Mm
6	132-0622	2	Bolt-Drain Plug	13	132-0686	1	Nut-Flange-10Mm
7	132-0635	1	Washer-Thrust-6Mm	14	132-0688	2	Washer-Plain-6Mm
8	132-0640	2	Washer-Drain Plug-10.2Mm	15	132-0693	1	Pin-Lock-8Mm
9	132-0642	1	Clip-Governor Holder	16	131-8221	2	Bolt-Flange-6X12
10	132-0651	1	Bearing-Radial Ball	17	132-0532	1	Switch ASM-Oil Level

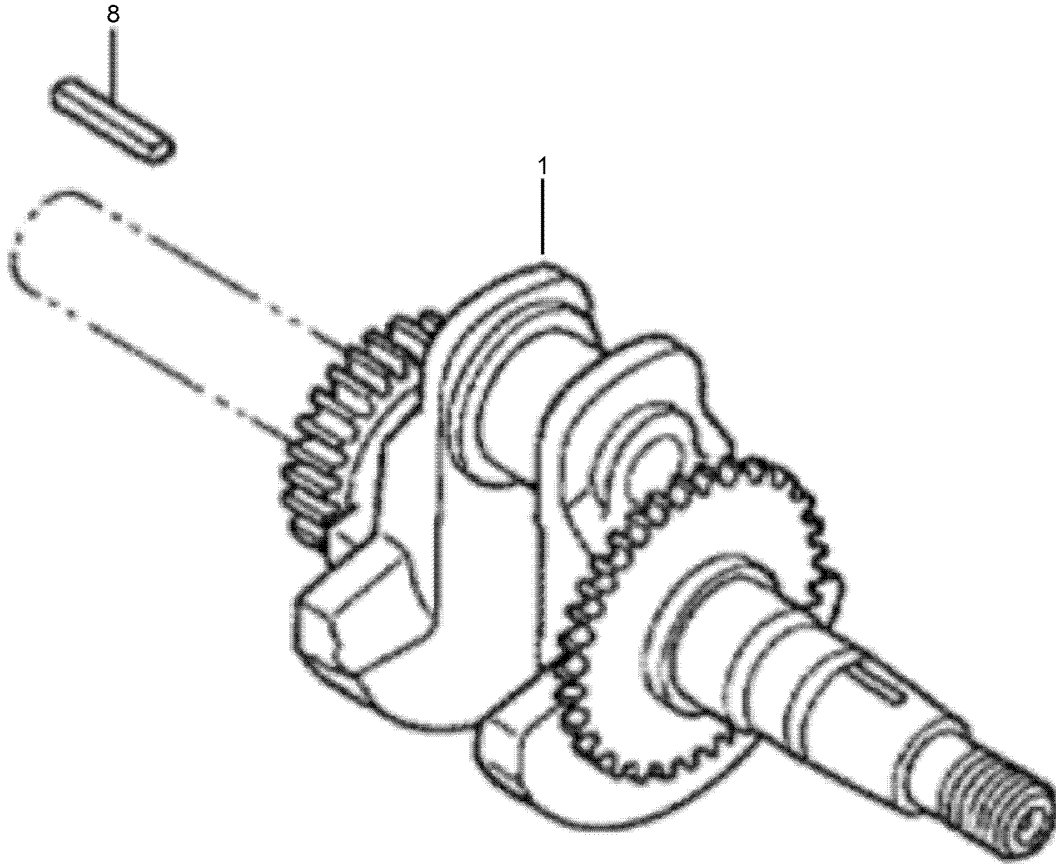
Crankcase Cover Assembly



Crankcase Cover Assembly (continued)

<i>Ref.</i>	<i>Part Number</i>	<i>Qty.</i>	<i>Description</i>	<i>Ref.</i>	<i>Part Number</i>	<i>Qty.</i>	<i>Description</i>
2	132-0103	1	Cover ASM-Crankcase	7	132-0659	1	Oil Seal-25X41.25X6
3	132-0108	1	Packing-Case Cover	8	132-0695	2	Dowel Pin-8X14
4	132-0220	1	Cap ASM-Oil Filler	9	131-8225	6	Bolt-Flange-8X32
5	132-0221	1	Cap ASM-Oil Filler	10	131-8227	1	Bearing-Radial Ball-6205
6	132-0224	1	Packing-Oil Filler Cap	11	132-0224	1	Packing-Oil Filler Cap
7	132-0654	1	Oil Seal-25X41X6				

Crankshaft Assembly

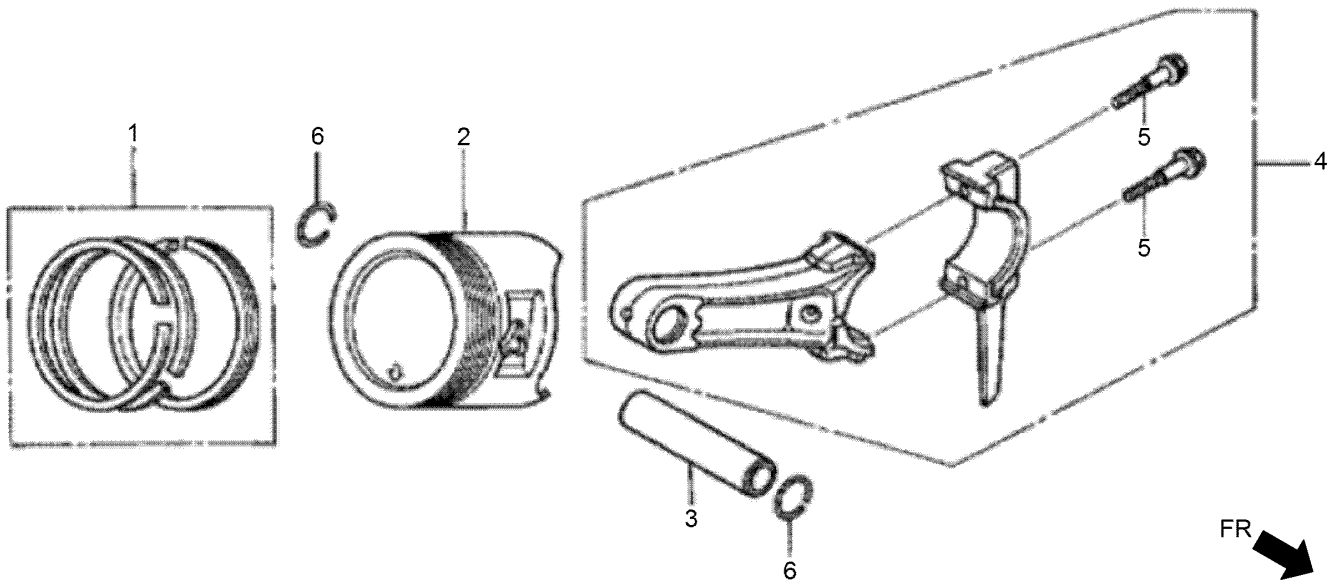


FR 

Crankshaft Assembly (continued)

<i>Ref.</i>	<i>Part Number</i>	<i>Qty.</i>	<i>Description</i>
1	132-0164	1	Crankshaft ASM
8	132-0647	1	Key-5X5X33

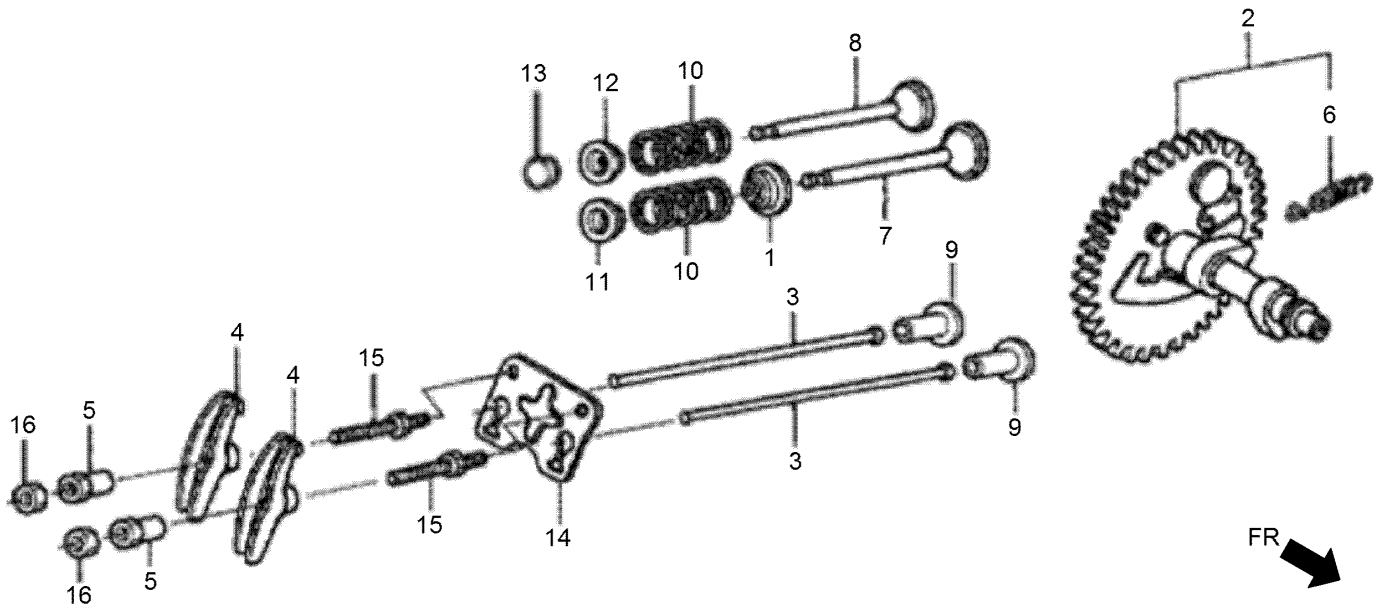
Piston and Connecting Rod Assembly



Piston and Connecting Rod Assembly (continued)

<i>Ref.</i>	<i>Part Number</i>	<i>Qty.</i>	<i>Description</i>	<i>Ref.</i>	<i>Part Number</i>	<i>Qty.</i>	<i>Description</i>
1	132-0137	1	Ring Set-Piston (STD)	4	132-0155	1	Rod ASM-Connecting
1	132-0138	1	Ring Set-Piston (STD)	5	132-0573	2	Bolt-Connecting Rod
2	132-0144	1	Piston	6	132-0637	2	Clip-Piston Pin-18Mm
3	132-0150	1	Pin-Piston				

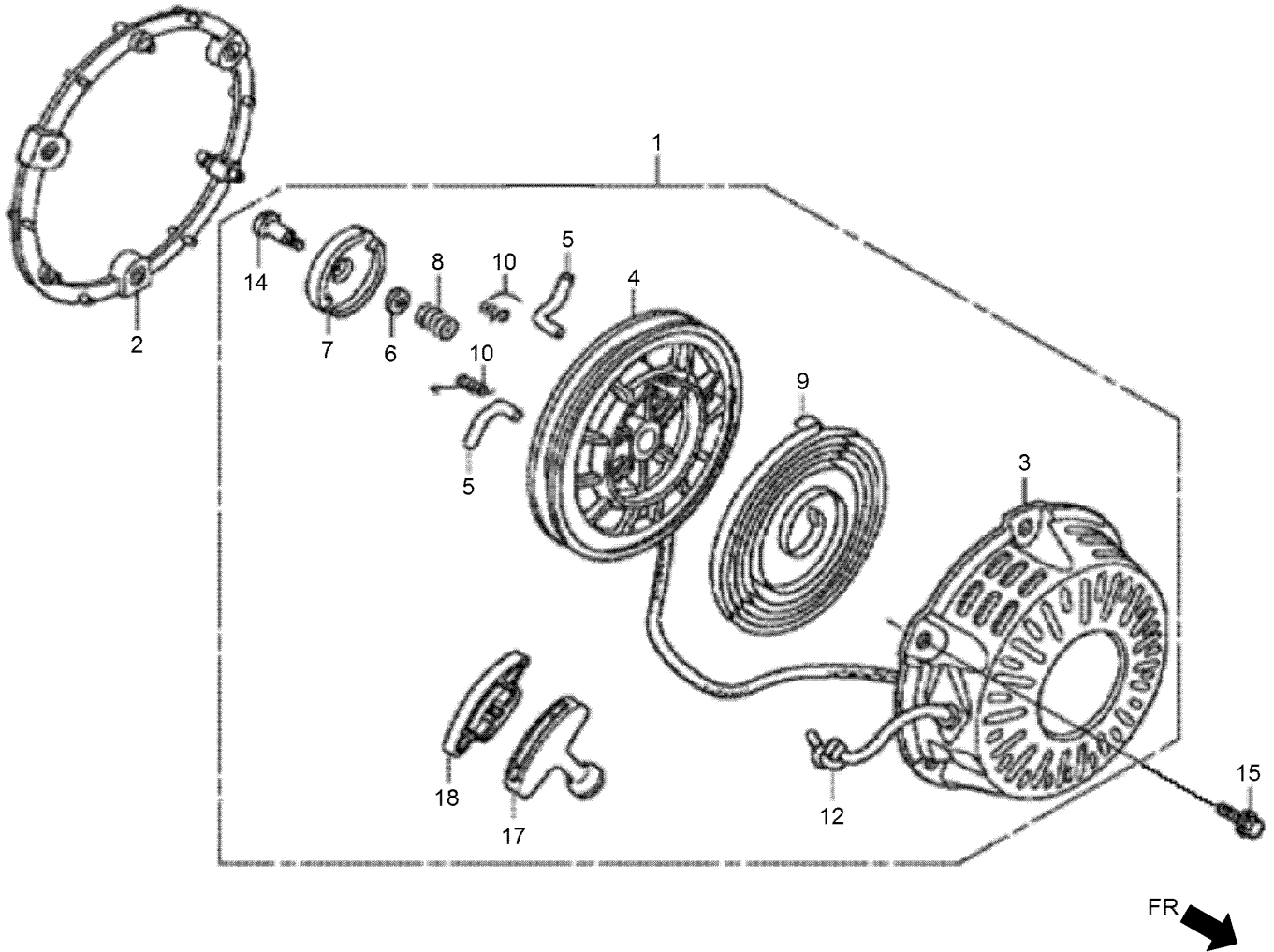
Camshaft Assembly



Camshaft Assembly (continued)

<i>Ref.</i>	<i>Part Number</i>	<i>Qty.</i>	<i>Description</i>	<i>Ref.</i>	<i>Part Number</i>	<i>Qty.</i>	<i>Description</i>
1	132-0120	1	Seal-Valve Stem	10	132-0206	2	Spring-Valve
2	132-0172	1	Camshaft ASM	11	132-0211	1	Retainer-Intake Valve Spring
3	132-0181	2	Rod-Push	12	132-0213	1	Retainer-Exhaust Valve Spring
4	132-0184	2	Arm-Valve Rocker	13	132-0214	1	Rotator-Valve
5	132-0188	2	Pivot-Rocker Arm	14	132-0215	1	Plate-Push Rod Guide
6	132-0191	1	Spring-Weight Return	15	132-0592	2	Bolt-Pivot-8Mm
7	132-0195	1	Valve-Intake	16	132-0629	2	Nut-Pivot Adjusting
8	132-0200	1	Valve-Exhaust				
9	132-0203	2	Lifter-Valve				

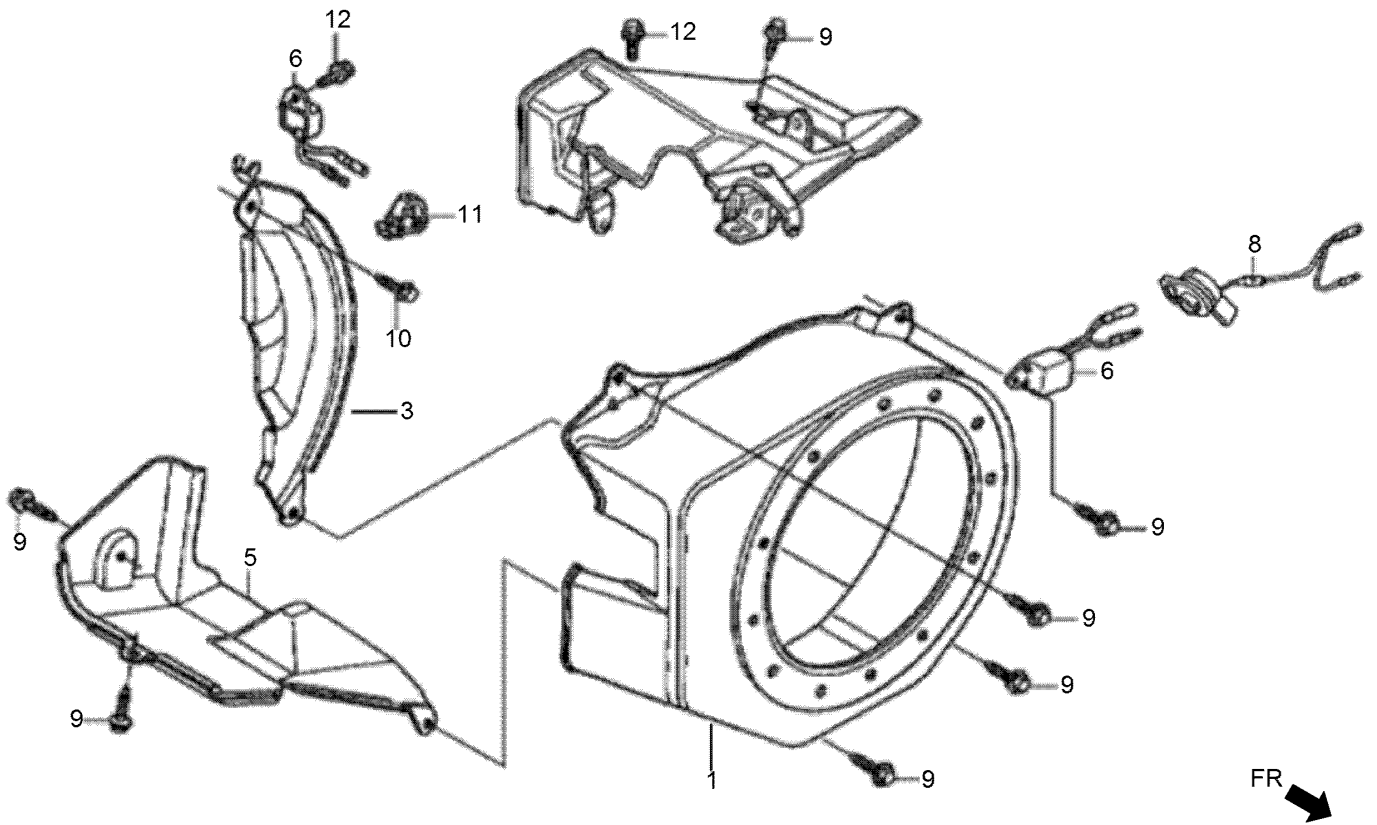
Recoil Starter Assembly



Recoil Starter Assembly (continued)

<i>Ref.</i>	<i>Part Number</i>	<i>Qty.</i>	<i>Description</i>	<i>Ref.</i>	<i>Part Number</i>	<i>Qty.</i>	<i>Description</i>
1	132-0477	1	Starter ASM-Recoil	5	132-0491	2	Ratchet-Starter
1	132-0478	1	Starter ASM-Recoil	6	132-0492	1	Plate-Friction
2	132-0484	1	Spacer-Recoil Starter Mtg (Nh1)	7	132-0493	1	Guide-Ratchet
2	132-0485	1	Spacer-Recoil Starter Mtg (R280R)	8	132-0494	1	Spring-Friction
3	132-0486	1	Recoil Starter Case ASM (R280)	9	132-0495	1	Spring-Recoil Starter
3	132-0487	1	Recoil Starter Case ASM (Nh1)	10	132-0497	2	Spring-Return
4	132-0489	1	Reel-Recoil Starter	12	132-0507	1	Rope-Recoil Starter
				14	132-0579	1	Screw-Setting
				15	131-8223	3	Bolt-Flange-6X18
				17	132-0502	1	Knob-Recoil Starter
				18	132-0509	1	Knob-Reinforcement

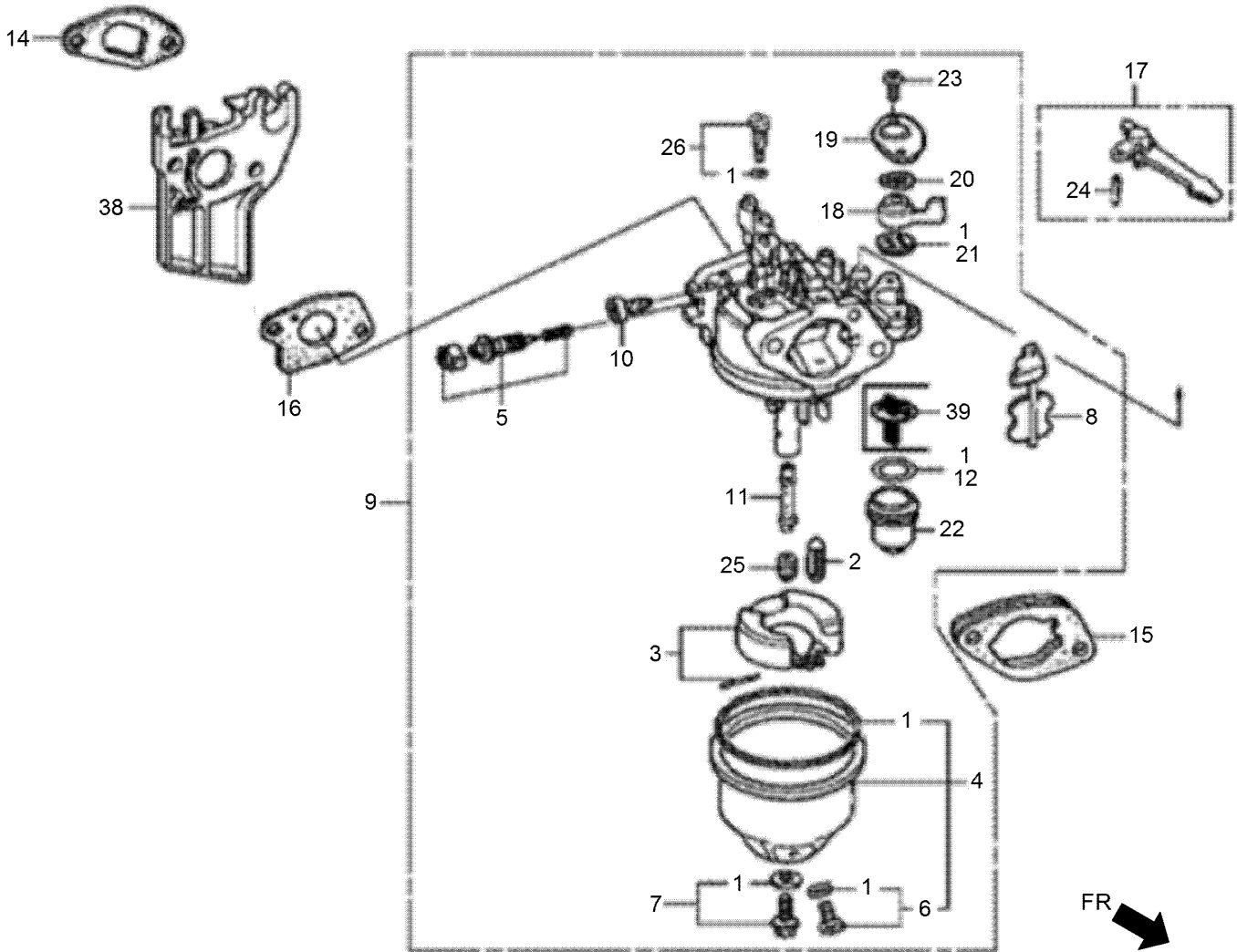
Fan Cover Assembly



Fan Cover Assembly (continued)

<i>Ref.</i>	<i>Part Number</i>	<i>Qty.</i>	<i>Description</i>	<i>Ref.</i>	<i>Part Number</i>	<i>Qty.</i>	<i>Description</i>
1	132-0465	1	Fan Cover ASM (Nh1)	8	132-0530	1	Switch ASM-Engine Stop
1	132-0464	1	Fan Cover ASM (R280)	9	132-4880	6	Bolt-Flange-6X12
3	132-0469	1	Side Plate ASM	10	132-0605	1	Bolt-Flange-6X20
5	132-0473	1	Shroud ASM	11	132-0641	1	Clip-Harness
6	132-0528	1	Alert Unit-Oil	12	131-8220	1	Bolt-Flange-6X8

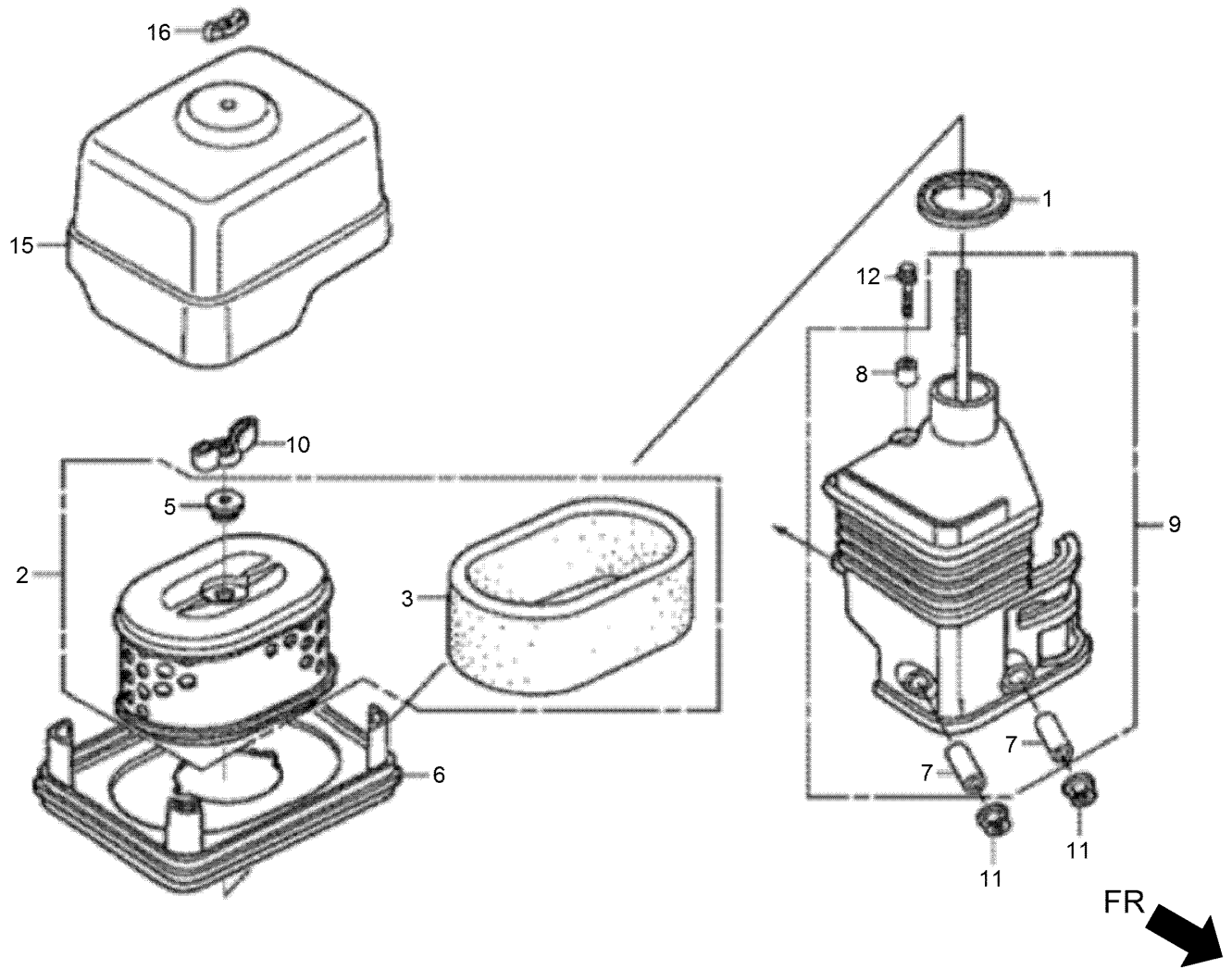
Carburetor Assembly



Carburetor Assembly (continued)

<i>Ref.</i>	<i>Part Number</i>	<i>Qty.</i>	<i>Description</i>	<i>Ref.</i>	<i>Part Number</i>	<i>Qty.</i>	<i>Description</i>
1	132-0239	1	Gasket Set	16	132-0287	1	Packing-Carburetor
2	132-0241	1	Valve Set-Float	17	132-0343	1	Choke Lever ASM
3	132-0242	1	Float Set	18	132-0359	1	Lever-Cock
4	132-0247	1	Chamber Set-Float	19	132-0360	1	Plate-Lever Setting
5	132-0250	1	Screw Set-Pilot	20	132-0362	1	Spring-Cock Lever
6	132-0251	1	Screw Set-Drain	21	132-0364	1	Packing-Fuel Cock
7	132-0253	1	Screw Set	22	132-0366	1	Cup-Fuel Strainer
8	132-0257	1	Choke Set	23	132-0676	2	Screw-Pan-3X6
9	132-0265	1	Carburetor ASM	24	132-0698	1	Pin-Spring-2X12
10	132-0268	1	Screw-Throttle Stop	25	131-8237	1	Jet-Main, No. 75
11	132-0272	1	Nozzle-Main	26	131-8239	1	Jet Set-Pilot, No. 40
12	132-0276	1	Packing-Fuel Strainer Cup	38	132-0278	1	Insulator-Carburetor
14	132-0281	1	Packing-Insulator	39	132-0365	1	Filter-Cup
15	132-0284	1	Carburetor Spacer ASM				

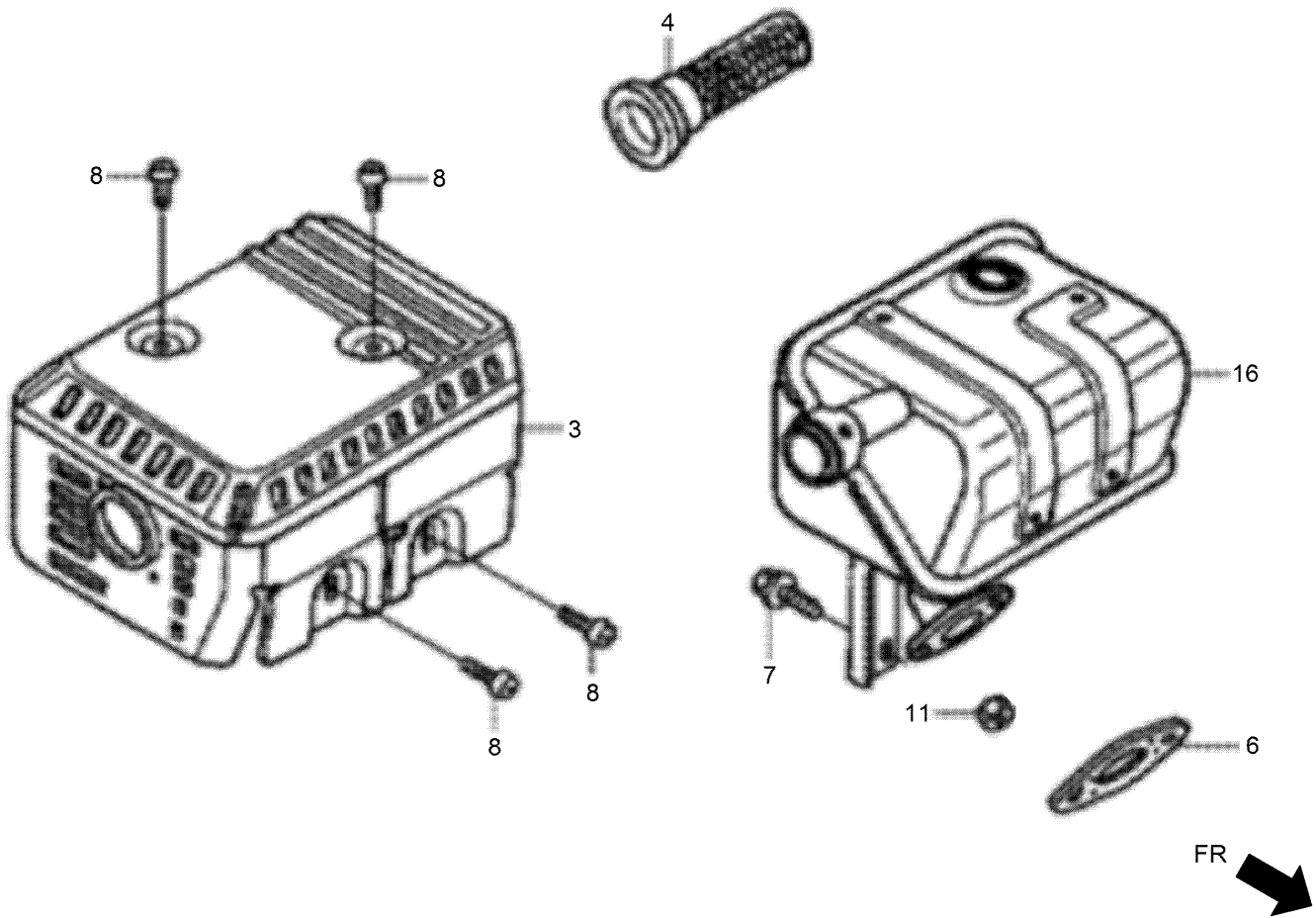
Air Cleaner Assembly



Air Cleaner Assembly (continued)

<i>Ref.</i>	<i>Part Number</i>	<i>Qty.</i>	<i>Description</i>	<i>Ref.</i>	<i>Part Number</i>	<i>Qty.</i>	<i>Description</i>
1	132-0291	1	Packing-Elbow	9	132-0395	1	Air Cleaner/Elbow ASM
2	132-0367	1	Element-Air Cleaner	10	132-0631	1	Nut-Tool Box Setting
3	132-0372	1	Filter-Outer	11	132-4881	2	Nut-Flange-6Mm
5	132-0391	1	Grommet-Air Cleaner	12	131-8224	1	Bolt-Flange-6X20
6	132-0392	1	Nose-Silencer	15	132-0387	1	Cover-Air Cleaner
7	132-0393	2	Collar-Air Cleaner	16	132-0630	1	Nut-Air Cleaner
8	132-0394	1	Collar B-Air Cleaner				

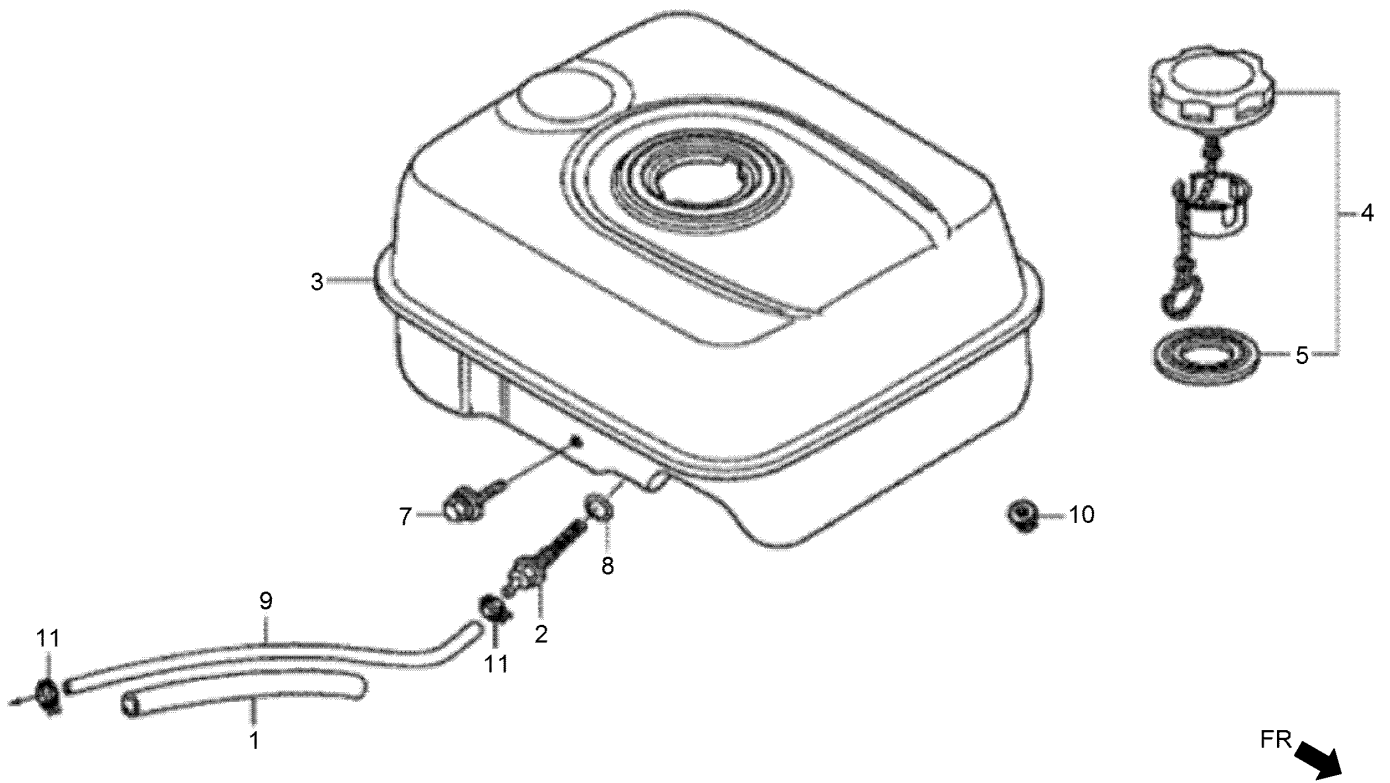
Muffler Assembly



Muffler Assembly (continued)

<i>Ref.</i>	<i>Part Number</i>	<i>Qty.</i>	<i>Description</i>	<i>Ref.</i>	<i>Part Number</i>	<i>Qty.</i>	<i>Description</i>
3	132-0453	1	Muffler Protector ASM	8	132-0616	4	Screw-Tapping-5X8
4	132-0456	1	Arrester-Spark	11	132-0684	2	Nut-Hex-8Mm
6	132-0457	1	Gasket-Muffler	16	132-0445	1	Muffler ASM
7	132-0600	1	Bolt-Flange-6X13				

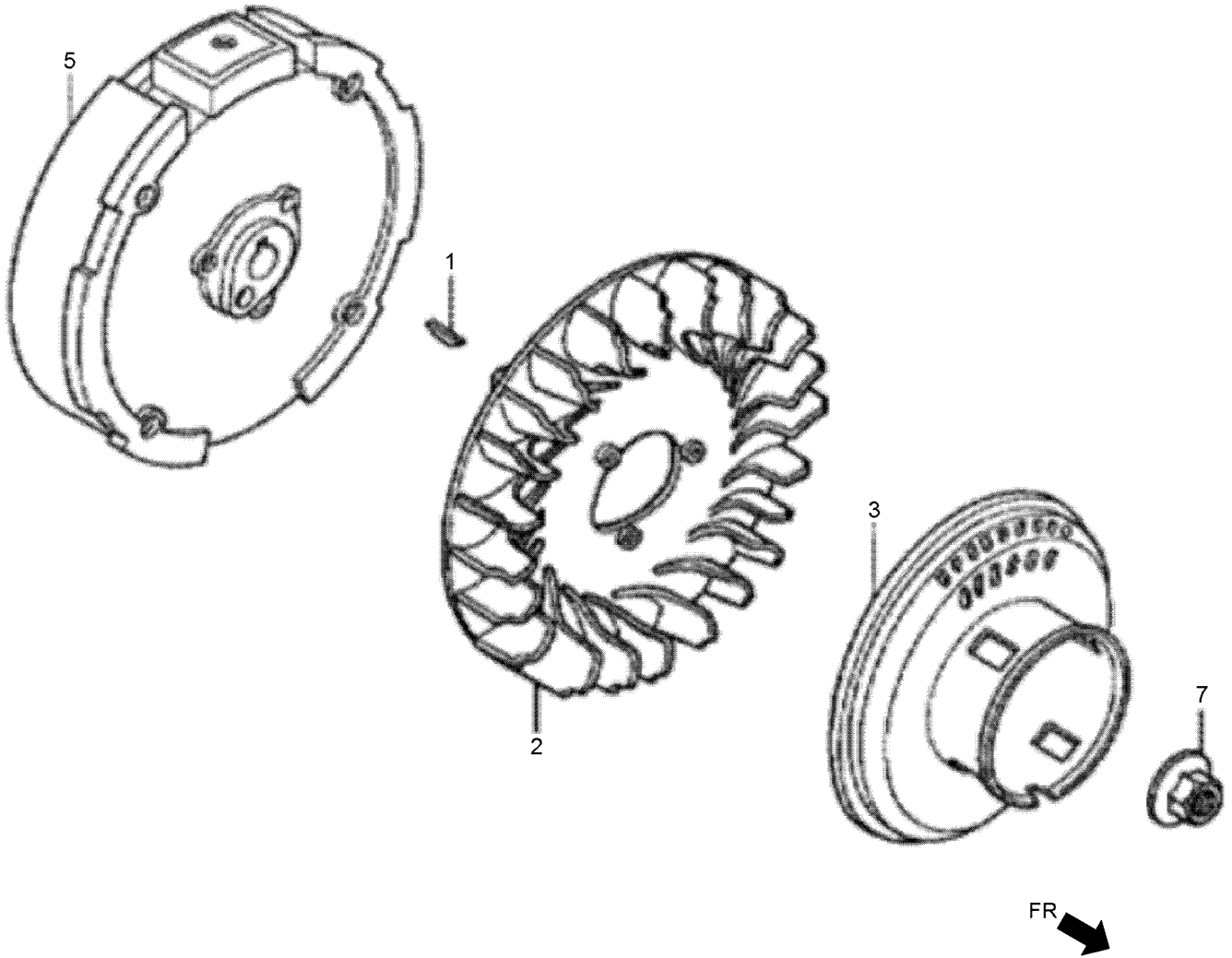
Fuel Tank Assembly



Fuel Tank Assembly (continued)

<i>Ref.</i>	<i>Part Number</i>	<i>Qty.</i>	<i>Description</i>	<i>Ref.</i>	<i>Part Number</i>	<i>Qty.</i>	<i>Description</i>
1	132-0349	1	Rubber-Supporter	5	132-0431	1	Packing-Fuel Filler Cap
2	132-0361	1	Joint-Fuel Tank	7	132-0583	1	Bolt-Flange-6X34
3	132-0397	1	Fuel Tank ASM (Nh31)	8	132-0668	1	O-Ring-14Mm
3	132-0398	1	Fuel Tank ASM (Nh1)	9	132-0669	1	Tube-Fuel-4.5X145
4	132-0412	1	Fuel Filler Cap ASM (Up To S/N 1035885)	10	132-4881	2	Nut-Flange-6Mm
4	132-0413	1	Fuel Filler Cap ASM (From S/N 1035886)	11	131-8211	2	Clamp-Tube

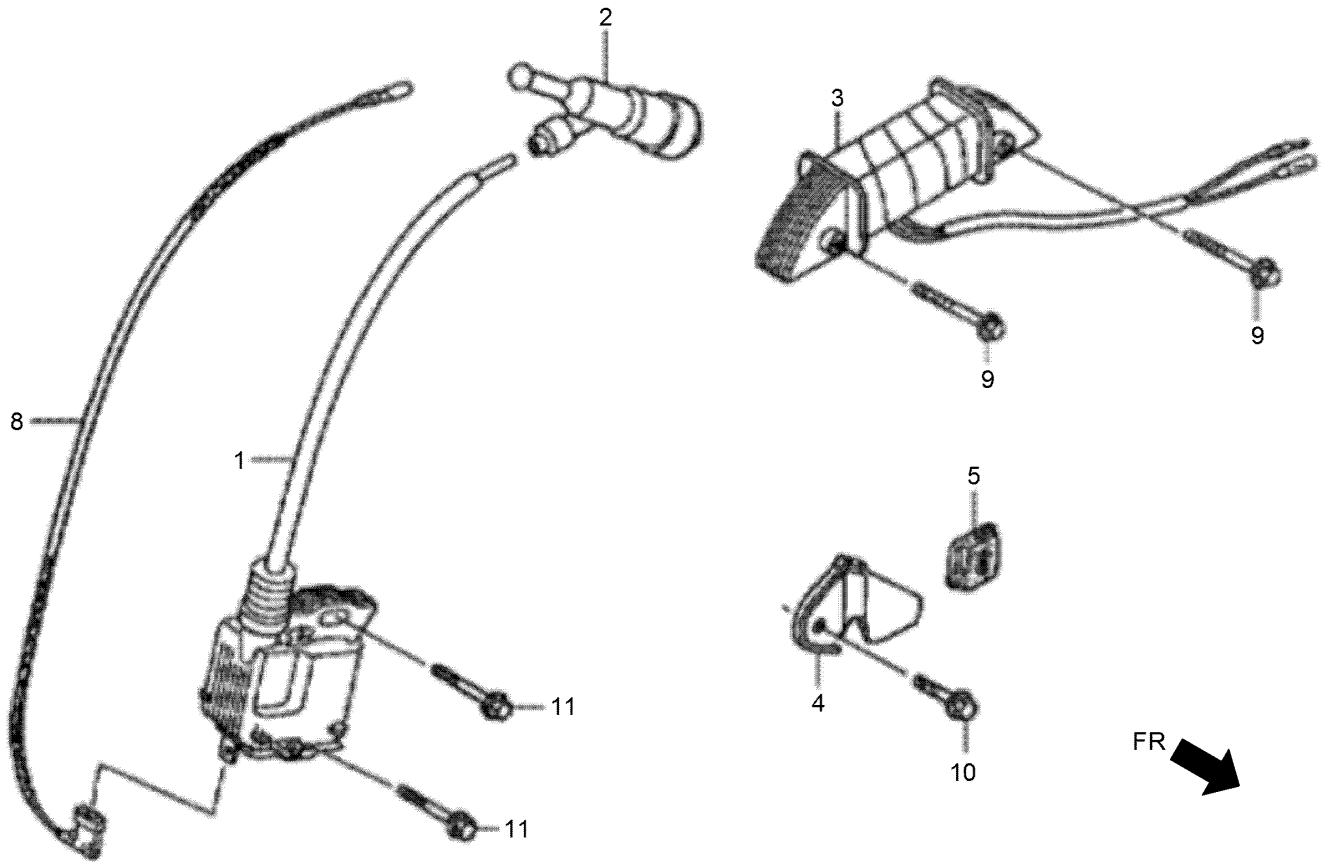
Flywheel Assembly



Flywheel Assembly (continued)

<i>Ref.</i>	<i>Part Number</i>	<i>Qty.</i>	<i>Description</i>	<i>Ref.</i>	<i>Part Number</i>	<i>Qty.</i>	<i>Description</i>
1	132-0167	1	Key-Special Woodruff-25X18	3	132-0499	1	Starter Pulley ASM
2	132-0461	1	Fan-Cooling	5	132-0519	1	Flywheel ASM
				7	132-0625	1	Nut-Special-14Mm

Ignition Coil Assembly

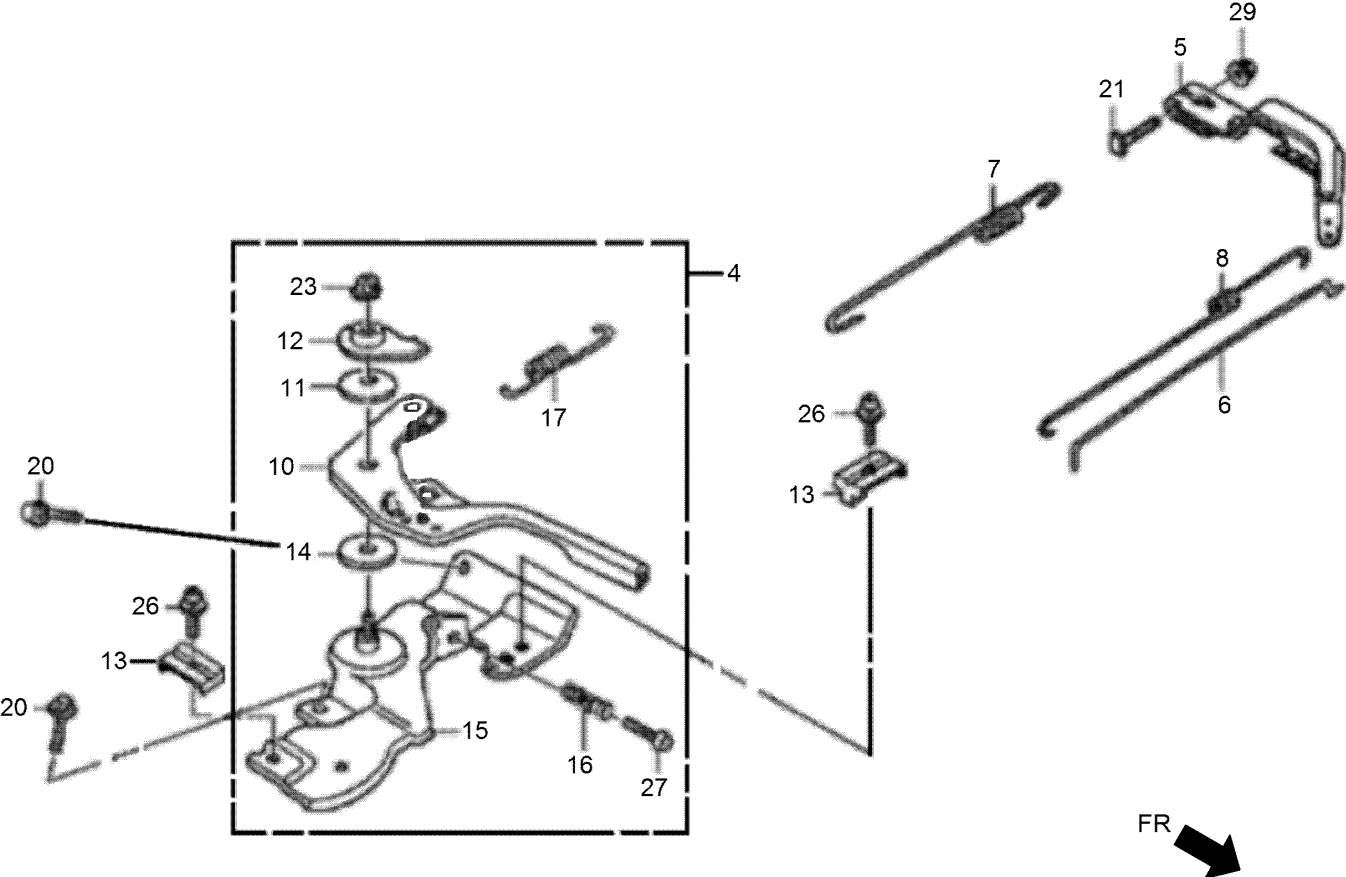


FR 

Ignition Coil Assembly (continued)

<i>Ref.</i>	<i>Part Number</i>	<i>Qty.</i>	<i>Description</i>	<i>Ref.</i>	<i>Part Number</i>	<i>Qty.</i>	<i>Description</i>
1	132-0510	1	Coil ASM-Ignition	8	132-0533	1	Cord-Stop Switch
2	132-0515	1	Cap ASM-Noise Suppressor	9	132-0596	2	Bolt-Flange-6X28
3	132-0521	1	Coil ASM-Lamp	10	132-0604	1	Bolt-Flange-5X10
4	132-0522	1	Clamper-Cord	11	132-0620	2	Bolt-Flange-6X25
5	132-0523	1	Grommet-Cord				

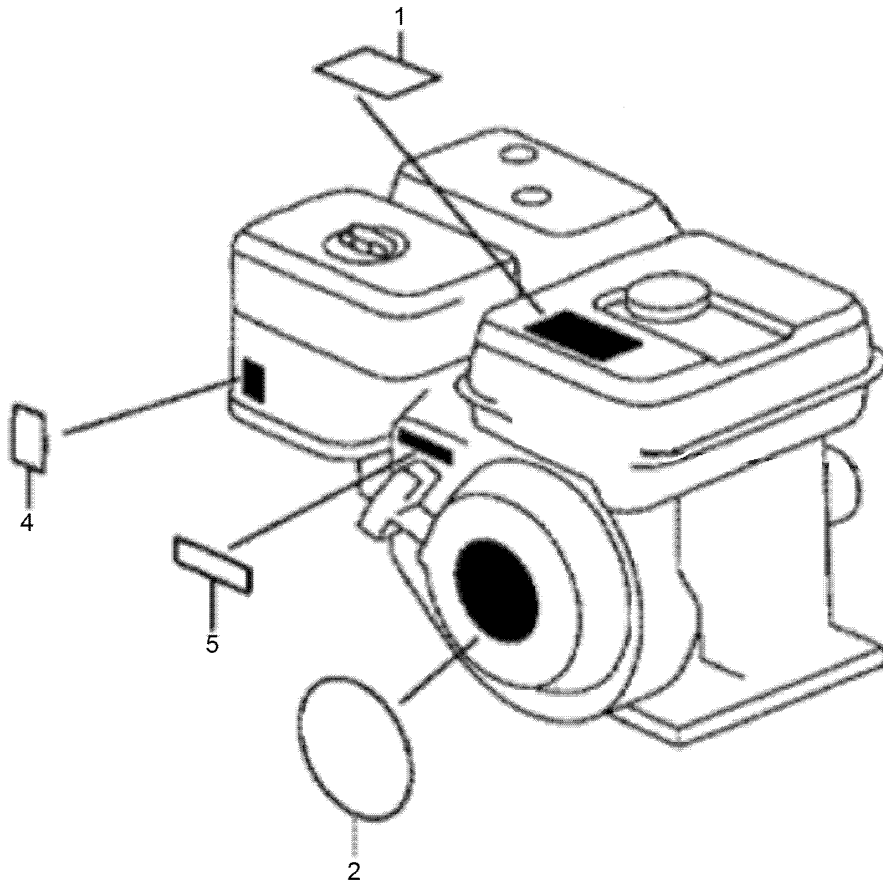
Control Assembly



Control Assembly (continued)

<i>Ref.</i>	<i>Part Number</i>	<i>Qty.</i>	<i>Description</i>	<i>Ref.</i>	<i>Part Number</i>	<i>Qty.</i>	<i>Description</i>
4	132-0292	1	Control ASM	15	132-0337	1	Control Base ASM
5	132-0311	1	Arm-Governor	16	132-0340	1	Spring-Control Adjusting
6	132-0316	1	Rod-Governor	17	132-0341	1	Spring-Cable Return
7	132-0320	1	Spring-Governor	20	132-4880	2	Bolt-Flange-6X12
8	132-0324	1	Spring-Throttle Return	21	132-0598	1	Bolt-Governor Arm
10	132-0328	1	Lever-Control	23	132-0619	1	Nut-Self-Lock-6Mm
11	132-0329	1	Spring-Lever	26	132-0678	1	Screw-Pan-5X16
12	132-0330	1	Washer-Control Lever	27	132-0679	1	Screw-Pan-5X25
13	132-0331	1	Holder-Cable	29	132-4881	1	Nut-Flange-6Mm
14	132-0332	1	Spacer-Control Lever				

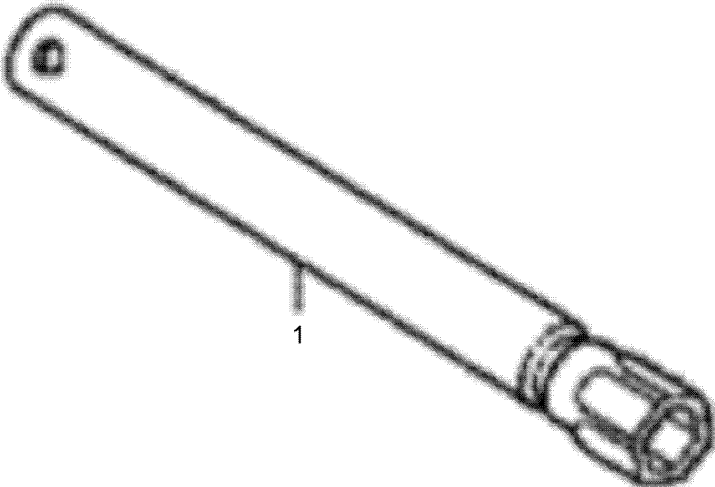
Label Assembly



Label Assembly (continued)

<i>Ref.</i>	<i>Part Number</i>	<i>Qty.</i>	<i>Description</i>	<i>Ref.</i>	<i>Part Number</i>	<i>Qty.</i>	<i>Description</i>
1	132-0559	1	Mark-Operator Caution	4	132-0566	1	Mark-Choke
2	132-0561	1	Emblem	5	132-0567	1	Mark-Throttle Indication

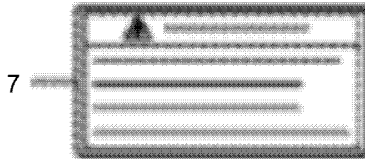
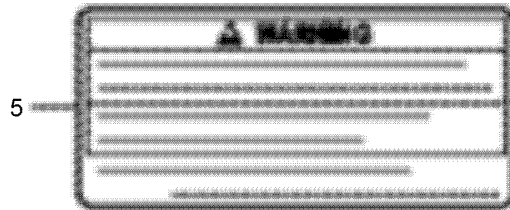
Wrench



Wrench (continued)

<i>Ref.</i>	<i>Part Number</i>	<i>Qty.</i>	<i>Description</i>
1	132-0572	1	Wrench-Spark Plug

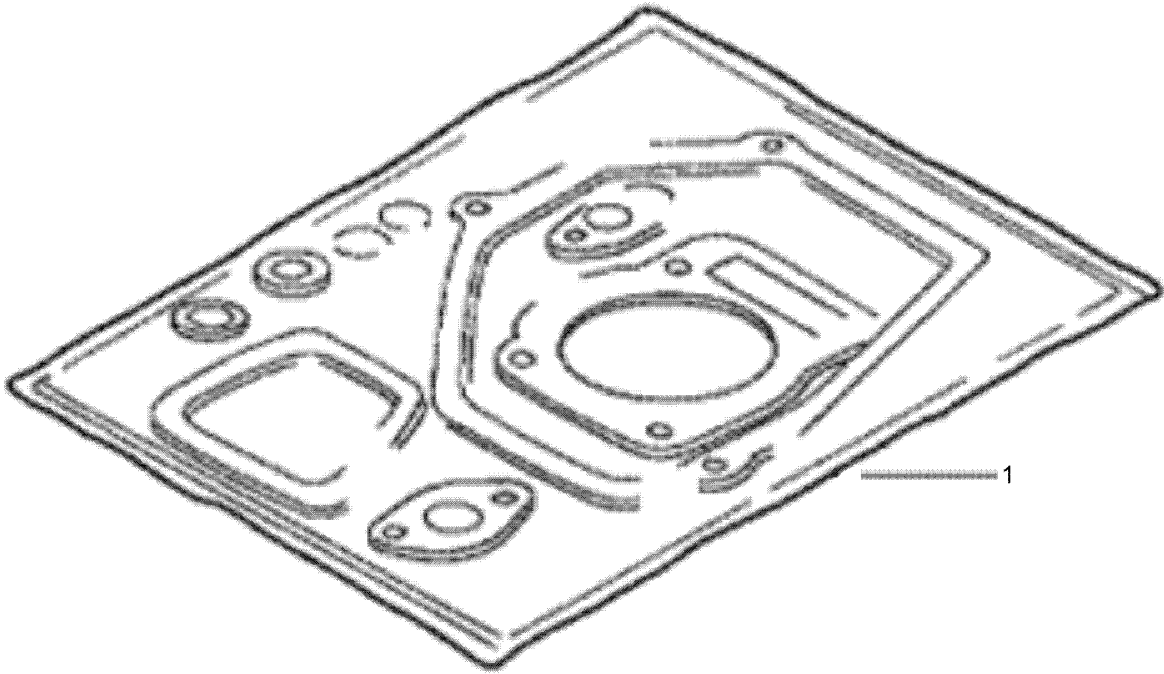
Decal Assembly



Decal Assembly (continued)

<i>Ref.</i>	<i>Part Number</i>	<i>Qty.</i>	<i>Description</i>	<i>Ref.</i>	<i>Part Number</i>	<i>Qty.</i>	<i>Description</i>
5	132-0552	1	Mark-Operator Caution (English)	7	132-0570	1	Mark-Exhaust Caution (English)
5	132-0553	1	Mark-Operator Caution (French)	7	132-0571	1	Mark-Exhaust Caution (French)

Gasket Kit



Gasket Kit (continued)

<i>Ref.</i>	<i>Part Number</i>	<i>Qty.</i>	<i>Description</i>
1	132-0100	1	Gasket Kit

Attachments and Accessories

For 44912 GreensPro 1240 Greens Roller

Product Name	Model/Part
Armrest Kit.....	44908
Roller Scraper Kit.....	44911
My Turf Wireless Hour Meter Kit	44922
LED Light Kit.....	44923

Notes:

Notes:

Notes:



Count on it.