



**Count on it.**

Form No. 3371-596 Rev A

# Parts Catalog

## HoverPro 550 Mower

Model No. 02605—Serial No. 312000001 and Up

# Ordering Replacement Parts

To order replacement parts, please supply the part number, the quantity, and the description of each part desired.

## Understanding Reference Numbers

Each identified part in an illustration has a reference number. The reference number for a part also appears in the parts list, along with other information about the part.

This catalog uses two special reference number formats, one to indicate parts in a service assembly and another to indicate the quantity of a given part in an illustration.

## Service Assembly Reference Numbers

Parts in service assemblies have reference numbers in the form a:b. The a represents the reference number of the entire service assembly and the b represents a sequential number unique to each part within the service assembly.

For example, a wheel assembly might be identified by reference number 6, the tire by 6:1, the valve by 6:2, and the wheel by 6:3. When you order the assembly identified by reference number 6, you receive all parts identified by reference numbers 6:1, 6:2, and 6:3. However, you may also order any part individually. Reference numbers of this type appear in illustration and in parts lists.

## Reference Numbers Indicating Quantity

In an illustration, if a reference number indicates more than one part, the reference number has the form nX y. The n represents the quantity of the part, the X is the multiplication symbol, and the y represents the reference number.

For example, in an illustration, the reference number 2X 37 means that two of the parts identified by reference number 37 are indicated.

# List of Abbreviations

**AR:** as required

**ASM:** assembly

**BBC:** blade brake control

**BHTF:** button head thread forming

**CARR:** carriage

**CCW:** counter clockwise

**CW:** clockwise

**DEG:** degrees

**DPA:** Dual Point Adjustment

**ECM:** electronic control module

**EXT:** external

**FH:** flat head

**GA:** gauge

**HD:** heavy-duty

**HF:** hex flange

**HH:** hex head

**HHF:** hex head flange

**HHFTF:** hex head flange thread forming

**HJ:** hex jam

**HLH:** hex lag head

**HOC:** height-of-cut

**HSBH:** hex socket button head

**HSFH:** hex socket flat head

**HSH:** hex socket head

**HWH:** hex washer head

**HWHTF:** hex washer head thread forming

**HYD:** hydraulic

**LH:** left hand

**LP:** Liquid Propane

**NI:** nylon insert

**NPTF:** national pipe thread fine

**PFH:** phillips flat head

**PPH:** phillips pan head

**PPHTF:** phillips pan head thread forming

**PRH:** phillips round head

**PTH:** phillips truss head

**PTO:** power-take-off

**RH:** right hand

**ROPS:** roll-over protection system

**RRB:** rear roller brush

**SFH:** slotted fillister head

**SHH:** slotted hex head

**SHWH:** slotted hex washer head

**SPH:** slotted pan head

**SQH:** square head

**SRH:** slotted round head

**STD:** standard

**TAP:** self tapping

**TTH:** torx truss head

# Contents

Engine and Impeller Assembly..... 4

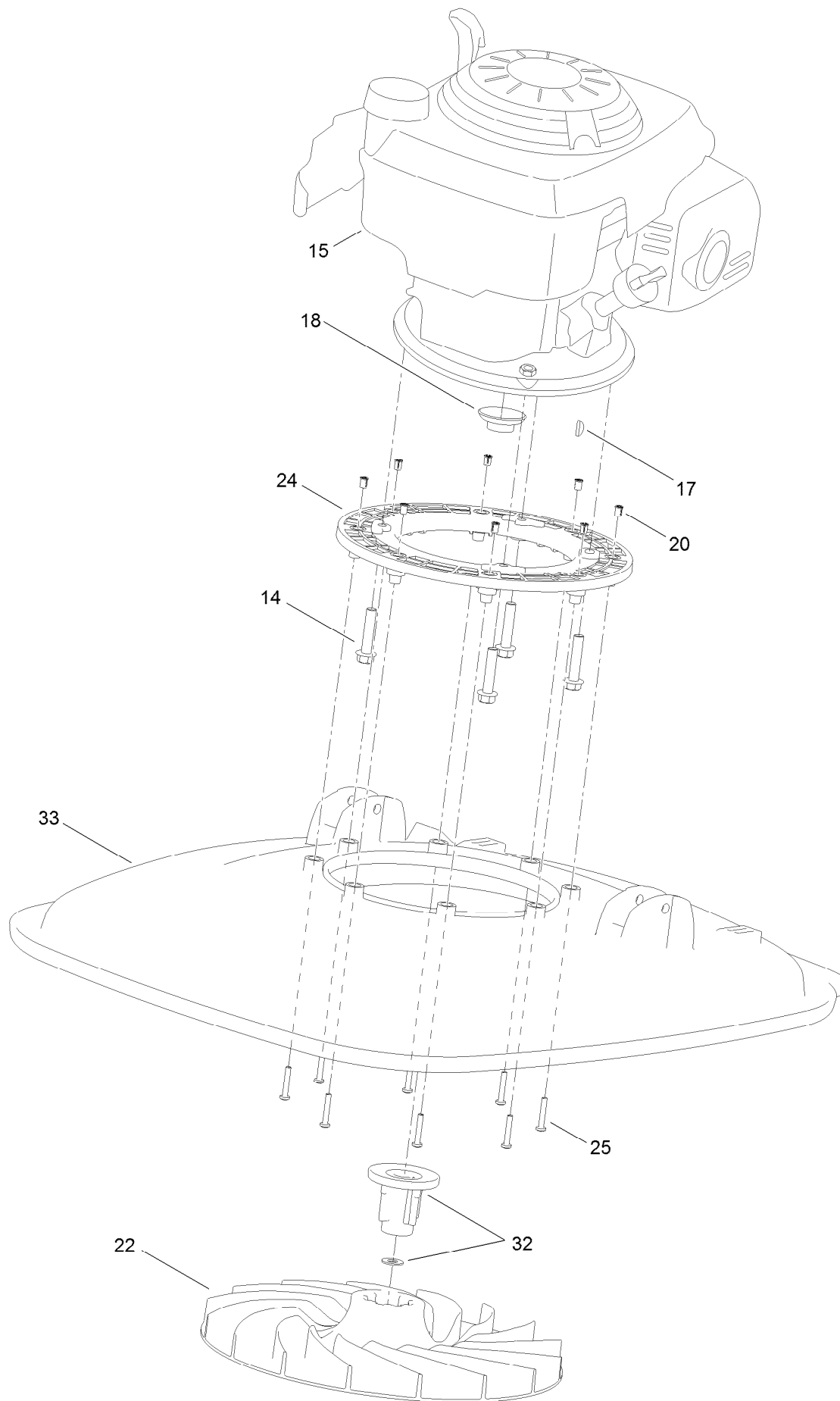
Handle Assembly ..... 6

Cutting Assembly ..... 8

Deck Decal Assembly ..... 9

Attachments and Accessories ..... 10

# Engine and Impeller Assembly



## Engine and Impeller Assembly (continued)

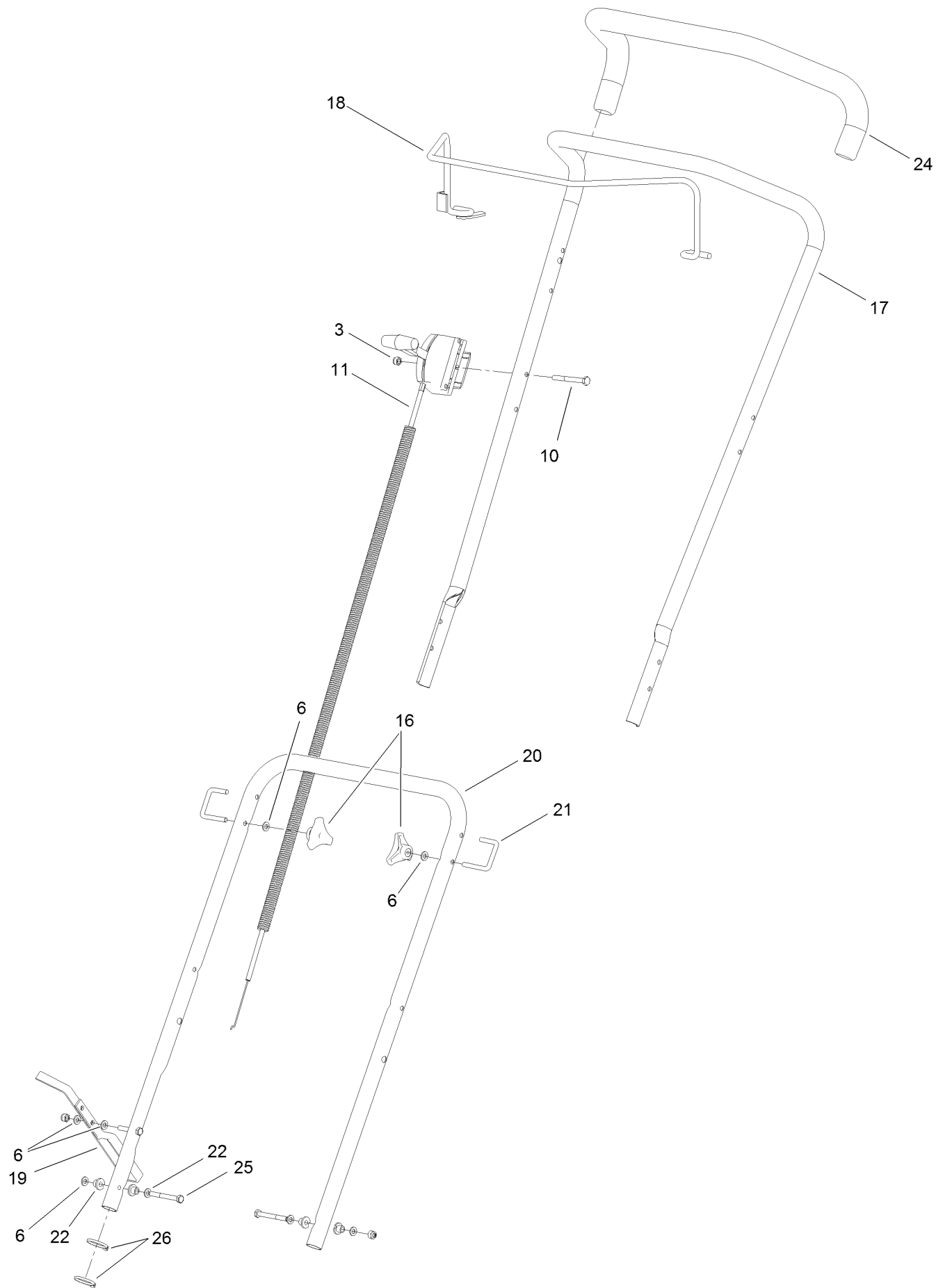
<i>Ref.</i>	<i>Part Number</i>	<i>Qty.</i>	<i>Description</i>
14	111-2157	4	Screw-Taptite
15		1	Engine-Honda, Gcv160Le A7H1 Sd ●■
17	1662	1	Key-Woodruff
18	H190118	1	Protector-Seal, Oil
20	H192266	8	Insert-Brass

<i>Ref.</i>	<i>Part Number</i>	<i>Qty.</i>	<i>Description</i>
22	H192268	1	Impeller
24	H292000	1	Frame-Mounting, Engine
25	H292004	8	Set-Screw
32	H290011	1	Drive And Spacer Kit
33	H290221	1	Deck-Drilled

● Not serviced separately

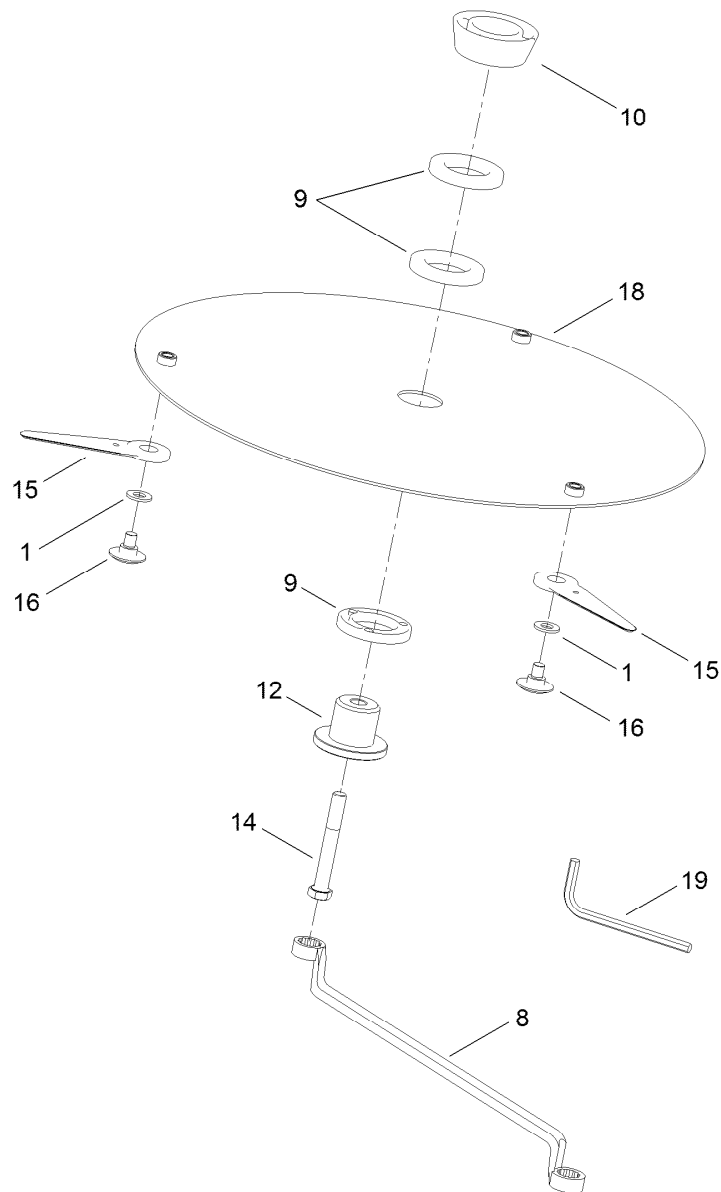
■ Obtain parts from [www.honda-engines.com](http://www.honda-engines.com)

# Handle Assembly



## Handle Assembly (continued)

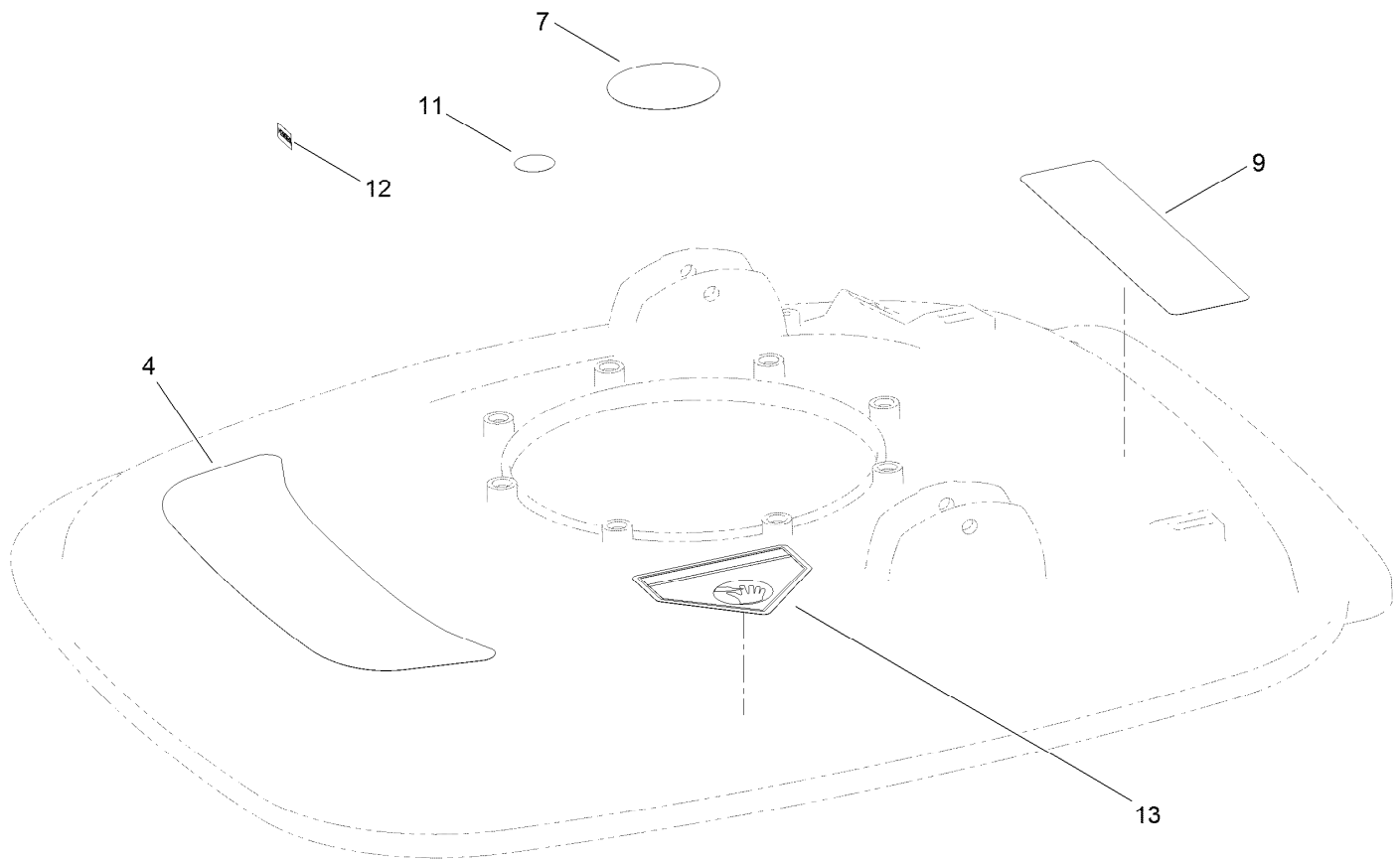
<i>Ref.</i>	<i>Part Number</i>	<i>Qty.</i>	<i>Description</i>	<i>Ref.</i>	<i>Part Number</i>	<i>Qty.</i>	<i>Description</i>
3	09544	4	Nut-Nyloc	19	H290286	1	Footstop
6	100.000.630	8	Washer	20	H290288	1	Handle-Lower
10	111-2204	1	Screw-Pan	21	H292026	2	Bolt-U
11	111-2205	1	Throttle Control With Opc ASM	22	H292058	4	Spacer-Handle
16	H192204	2	Handwheel	24	H292276	1	Grip-Handle Bar
17	H290237	1	Handle-Upper	25	H292309	2	Bolt-Hex
18	H290239	1	Arm-Bail	26	HY3966	2	Tie-Cable



## Cutting Assembly

Ref.	Part Number	Qty.	Description
1	09266	3	Washer Plain 5/16*5/8*19G
8	H190210	1	Spanner
9	H192025	3	Spacer-Blade, Aluminium
10	H192270	1	Spacer-Distance Piece
12	H192272	1	Retainer-Blade
14	H292018	1	Screw-Set
15	H292327	3	Blade Plastic
16	H292338	3	Bolt Shoulder Special
18	H292341	1	21" Trim Disc
19	H292343	1	Wrench Hex 1/4" S/Arm





## Deck Decal Assembly

<i>Ref.</i>	<i>Part Number</i>	<i>Qty.</i>	<i>Description</i>
4	111-5351	1	Decal-Hover Pro
7	111-5363	1	Decal-Engine
9	111-5393	1	Decal-Warning Label
11	H295124	1	Label-Tip This Way Up
12	H295159	1	Label-Stop
13	94-8072	1	Decal-Danger

# Attachments and Accessories

## For 02605 HoverPro 550 Mower

Product Name	Model/Part
Transport Wheel Kit .....	02622
Handlebar Extension Kit .....	02623
Anti-Vibration Handlebar Kit .....	02624

**Notes:**



**Count on it.**