



**Z-Master**

# **Z 252 Traction Unit**

**Model No. 74200 – 890001 & Up**

---

## **Parts Catalog**

## ORDERING REPLACEMENT PARTS

To order replacement parts, please supply: the part number, the quantity, and the description of each part desired.

## Contents

Description	Page	Description	Page
Front Frame .....	1	Shields And Guards .....	9
Front Frame .....	2	Engine, Clutch & Muffler Shield .....	10
Main Frame .....	3	Deck Drive Belt And Pulleys .....	11
Fuel Tank .....	4	Electrical System .....	12
Parking Brake .....	5	Deck Mounting .....	13
Motion Control Lever .....	6	Electrical Diagram .....	14
Hydraulics .....	7		
Hydraulics .....	8	<b>Note:</b>	

## Part Description Abbreviations

Part descriptions in this catalog may include the following abbreviations.

Abbreviation	Meaning	Abbreviation	Meaning
AR .....	as required	HWHTF .....	hex washer head thread forming
ASM .....	assembly	INC .....	incorporated
CARR .....	carriage	LH .....	left hand
DEG .....	degrees	PH .....	pan head
FH .....	flat head	PPH .....	Phillips pan head
GA .....	gauge	PTO .....	power take off
HF .....	hex flange	RH .....	right hand
HFW .....	hex flange washer	SFH .....	slotted fillister head
HH .....	hex head	SH .....	square head
HHF .....	hex head flange	SHWH .....	slotted hex washer head
HHST .....	hex head self tapping	SPH .....	slotted pan head
HJ .....	hex jam	STD .....	standard
HOC .....	height-of-cut	TAP .....	self tapping
HS .....	hex socket	TH .....	truss head
HSBH .....	hex socket button head	TTH .....	Torx truss head
HSFH .....	hex socket flat head	WH .....	wing head
HSH .....	hex socket head		
HWH .....	hex washer head		

## Important Format Explanations

This catalog uses special formats to convey information in illustrations and parts lists. Specifically, one format is used in conjunction with service assemblies and another with quantities associated with reference numbers.

### Service Assemblies

Parts within service assemblies have reference numbers in the form *X:Y*. *X* is the reference number of the service assembly and *Y* is a sequential number unique to each part within the service assembly.

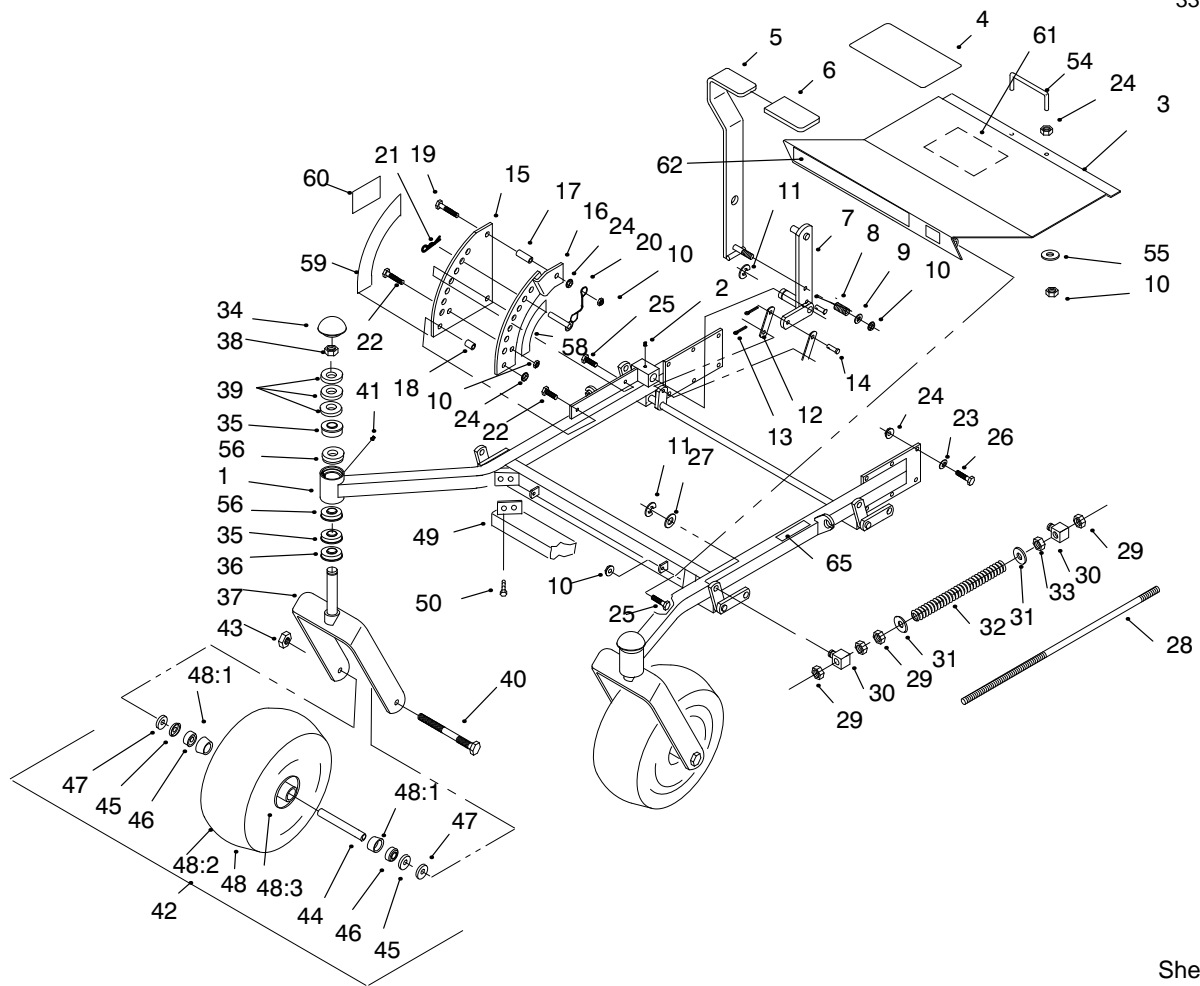
For example, a wheel assembly might be identified by reference number 6, the tire by 6:1, the valve by 6:2, and the wheel by 6:3. When you order the assembly identified by reference number 6, you receive all parts identified by reference numbers 6:1, 6:2, and 6:3. However, you may also order any part individually.

Reference numbers of this type appear in part lists and as callouts in illustrations.

### Reference Numbers with Quantities

Illustrations may have a quantity in parentheses next to a reference number, in the form *X (Y)*. *X* is the reference number. *Y* in parentheses is the quantity of the part identified by the reference number.

For example, the illustration callout 4 (2) indicates that two parts are used in that instance.



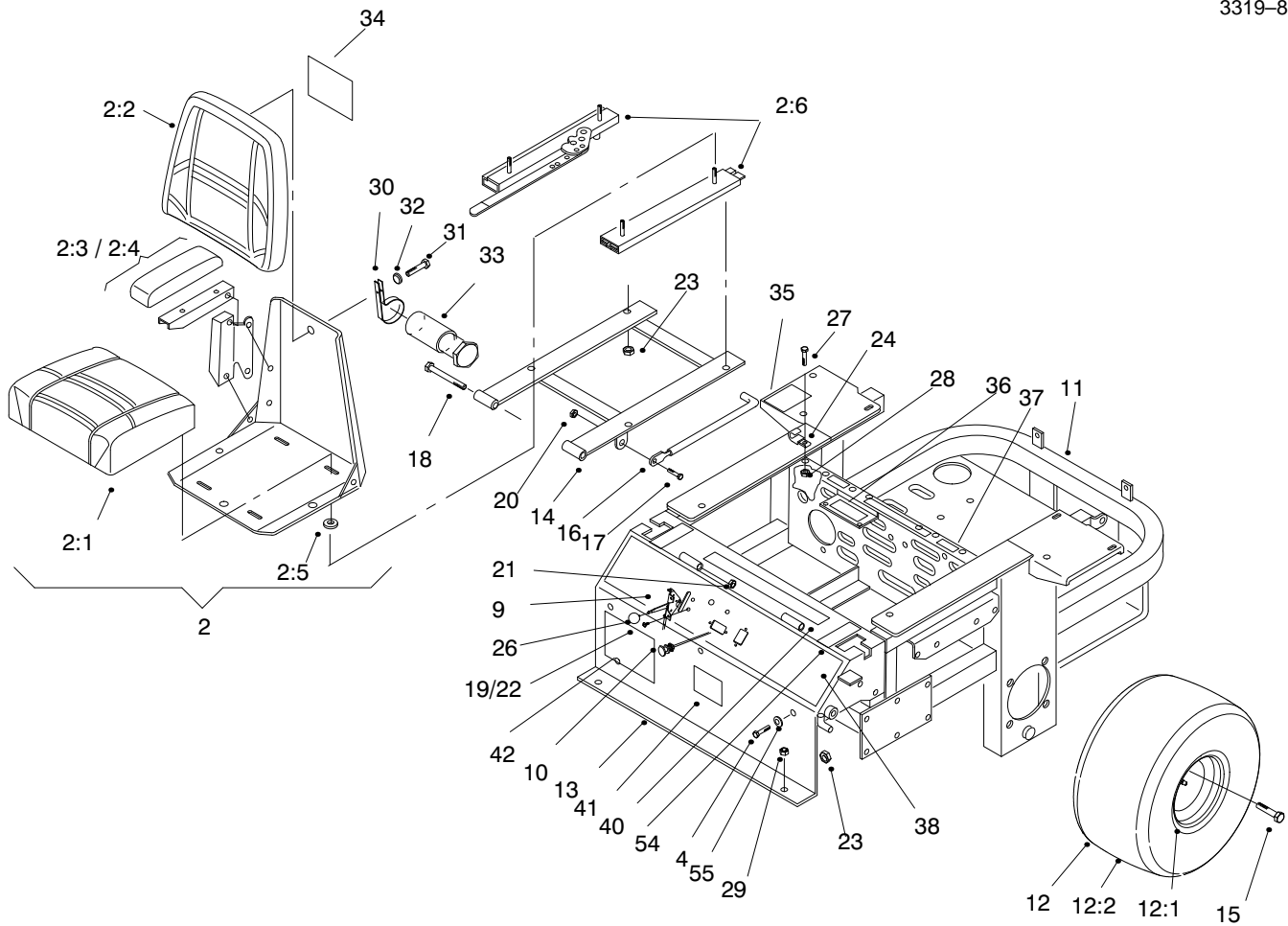
Sheet No.: 2

## Front Frame

Ref. No.	Part No.	Qty.	Description
1	E632742	1	Frame-Front
2	302-58	5	Fitting-Grease
3	E633783	1	Floorpan
4	E633553	3	Pad - Antiskid
5	E632324	1	Lever-Lift
6	E633295	1	Grip-Lift Lever
7	E632219	1	Arm-Deck Lift
8	E633325	1	Spring-Compression
9	3256-24	2	Washer-Flat
10	32146-2	7	Nut-Hex Lock
11	E808505	5	Ring-Retaining
12	E633068	2	Arm-Deck Lift
13	3272-10	2	Pin-Cotter
14	E808284	4	Pin
15	E633072	1	Plate-Deck Lift
16	E632195	1	Plate-Deck Lift
17	E633082	1	Bushinig
18	E633080	1	Bushiing
19	323-13	1	Screw-HH
20	E633097	1	Hitch Pin w/Lanyard
21	E806005	1	Hairpin
22	323-9	2	Screw-HH
23	E303327	12	Washer-Lock
24	32128-43	17	Nut-Flange
25	323-6	3	Screw-HH
26	323-7	12	Screw-HH
27	3256-29	4	Washer-Flat

Ref. No.	Part No.	Qty.	Description
28	E633096	2	Rod-Deck Lift
29	3217-11	8	Nut
30	E633441	4	Swivel-Deck Mount
31	3256-7	4	Washer-Flat
32	E633064	2	Spring-Deck Support
33	3218-6	2	Nut-HJ
34	E543513	2	Cap - Grease
35	254-94	4	Cone-Bearing
36	E543511	2	Seal-Grease
37	E632511	2	Fork-Castor
38	32146-14	2	Nut-Lock
39	E633508	6	Washer-Belleville
40	E800339	2	Screw-HH
41	E811010	2	Plug
42	E632586	2	Caster Wheel ASM
43	32146-13	2	Nut-Lock
44	E633579	2	Spacer
45	E633580	4	Seal-Bearing
46	254-78	4	Cone-Bearing
47	E633581	4	Spacer - Bearing





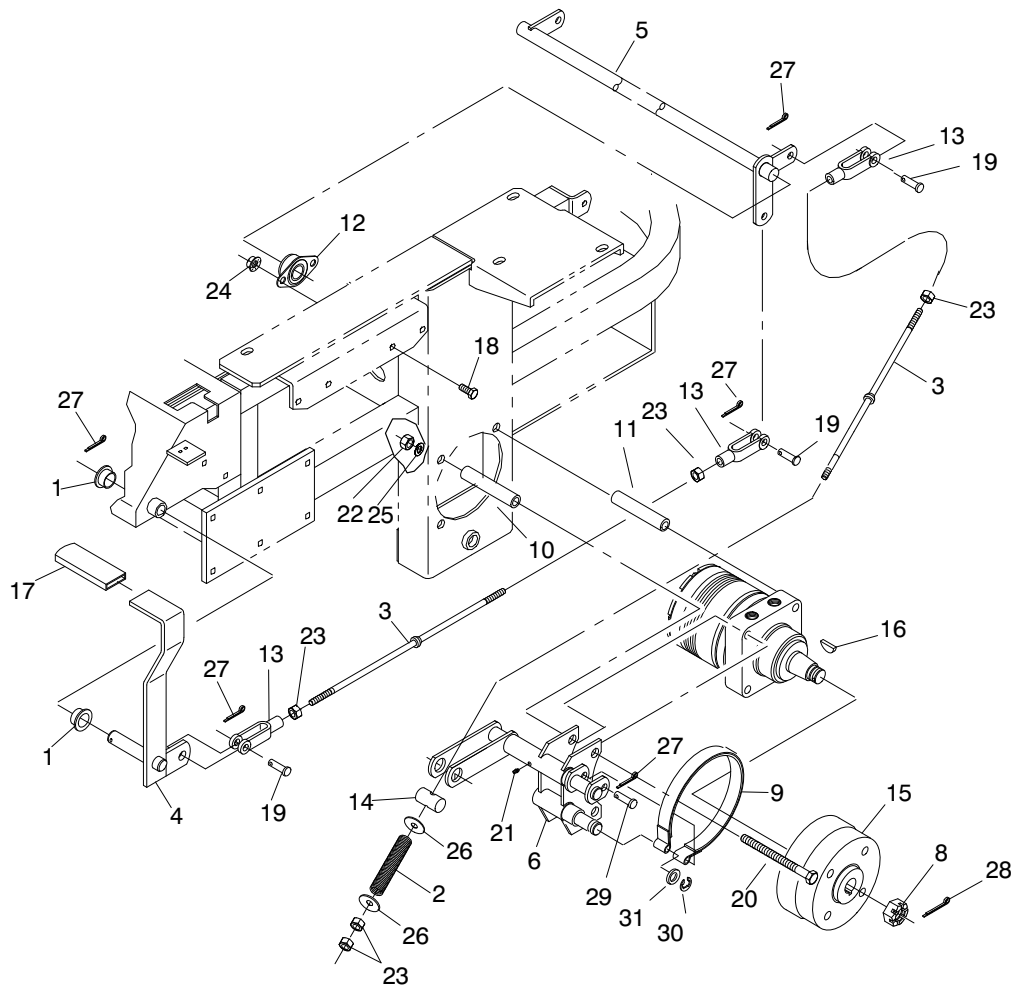
Sheet No.: 3

## Main Frame

Ref. No.	Part No.	Qty.	Description
2	E633705	1	Seat/Armrest ASM
2:1	E543407	1	Cushion
2:2	E633709	1	Cushion
2:3	E633710	1	Armrest
2:4	E633711	1	Armrest
2:5	E543401	4	Track Spacer
2:6	E523428	1	4" Locking Track Set
4	322-3	8	Screw-HH
9	E633696	1	Cable
10	E603336	1	Cable-Choke
11	E632655	1	Frame
12	E633007	2	Wheel & Tire ASM
12:1	E633009	2	Wheel
12:2	E633008	2	Tire
13	E634751	1	Console w/Decal
14	E632187	1	Frame-Seat
15	E633273	8	Wheel Bolt
16	E633293	1	Rod-Seat Holdup
17	322-5	1	Screw-HH
18	323-21	2	Screw-HH
19	32146-18	2	Nut-Lock
20	E804256	2	Nut-Lock
21	32146-2	2	Nut-Hex Lock
22	E807513	2	Bolt-CARR
23	32128-20	12	Nut-Lock
24	E513762	1	Clip

Ref. No.	Part No.	Qty.	Description
25	E303335	1	Tie-Plastic
26	E513592	1	Knob
27	321-4	1	Screw-HH
28	32128-33	1	Nut-Hex Flange
29	E513658	2	Bumper
30	2412-120	2	R-Clamp
31	32144-34	2	Screw-SHWH
32	3256-14	2	Washer-Flat
33	74-0720	1	Tube-Manual
34	94-2579	1	Decal-Toro
35	E633771	1	Decal-Belt Pump
36	E513929	1	Decal-Drive Release
38	E633738	1	Decal-Control Panel
40	E513747	1	Decal-Warning
41	E633346	1	Decal-Fuel Valve
42	E633735	1	Decal-Z252
54	E633354	2	Decal-Motion Control
55	3256-23	6	Washer



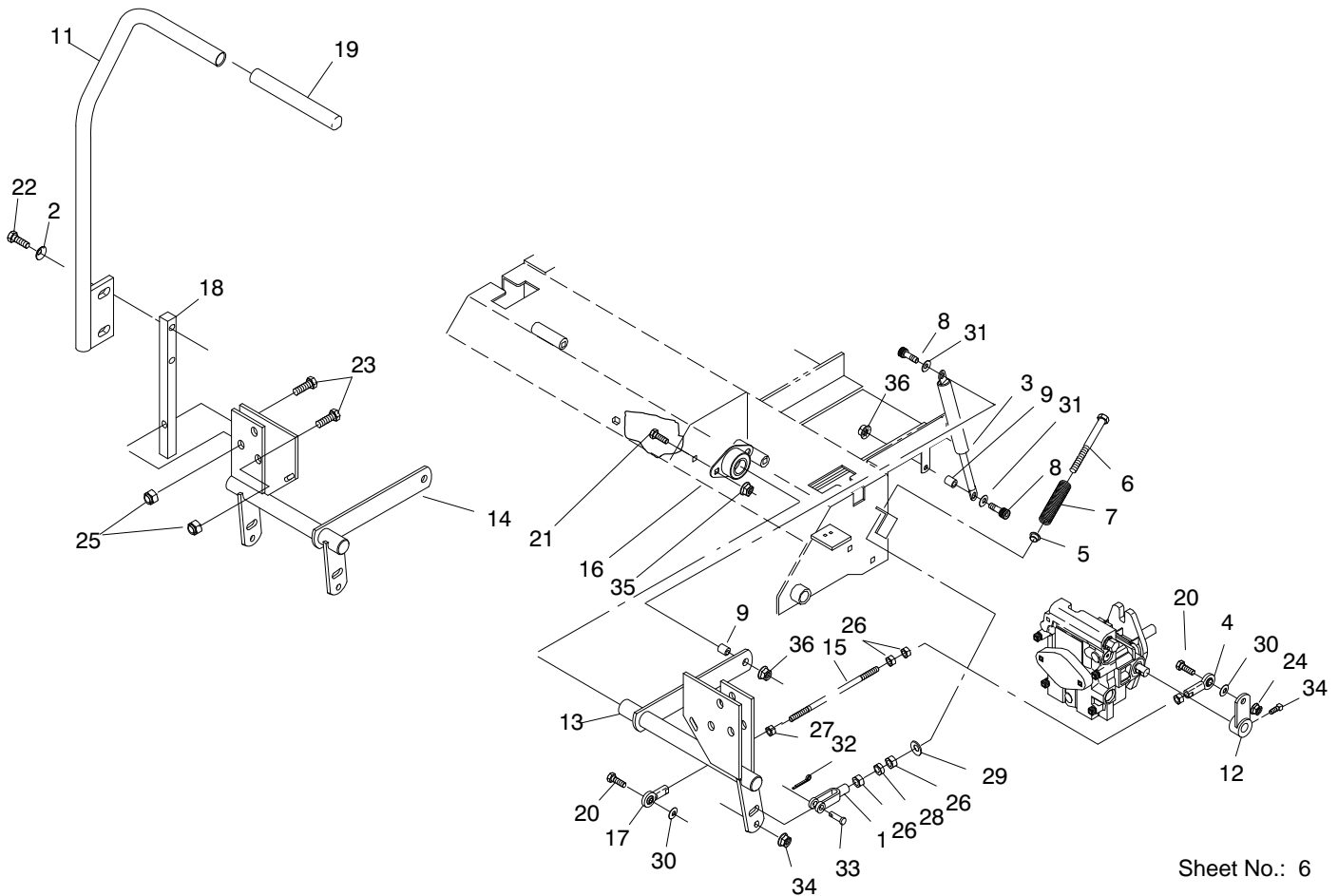


Sheet No.: 5

## Parking Brake

Ref. No.	Part No.	Qty.	Description
1	E513140	2	Bearing
2	E633454	2	Spring-Brake
3	E633477	3	Rod-Brake
4	E632489	1	Lever-Brake
5	E632217	1	Shaft-Brake
6	E632714	1	Bracket-Brake LH
7	E632715	1	Bracket-Brake RH
8	E809036	2	Nut
9	E633693	2	Brake Band
10	E633380	4	Spacer
11	E633382	4	Spacer
12	E633102	2	Bearing-Side Flange
13	E633131	4	Yoke-Brake Linkage
14	E633144	2	Pin-Trunnion
15	E633548	2	Hub-Wheel
16	E807020	2	Key-Woodruff
17	E633268	1	Grip-Brake Lever
18	323-4	4	Screw-HH
19	E808285	4	Pin-Clevis
20	325-17	8	Screw-HH
21	302-58	1	Fitting-Grease
22	3217-9	8	Nut-HH
23	3219-3	8	Nut-Hex
24	32128-43	4	Nut-Flange
25	3253-7	8	Washer-Lock
26	3256-4	4	Washer-Flat

Ref. No.	Part No.	Qty.	Description
27	3272-10	7	Pin-Cotter
28	E806800	2	Pin-Cotter
29	E808283	2	Pin-Clevis
30	E808514	2	Ring-Retaining
31	E805269	2	Washer

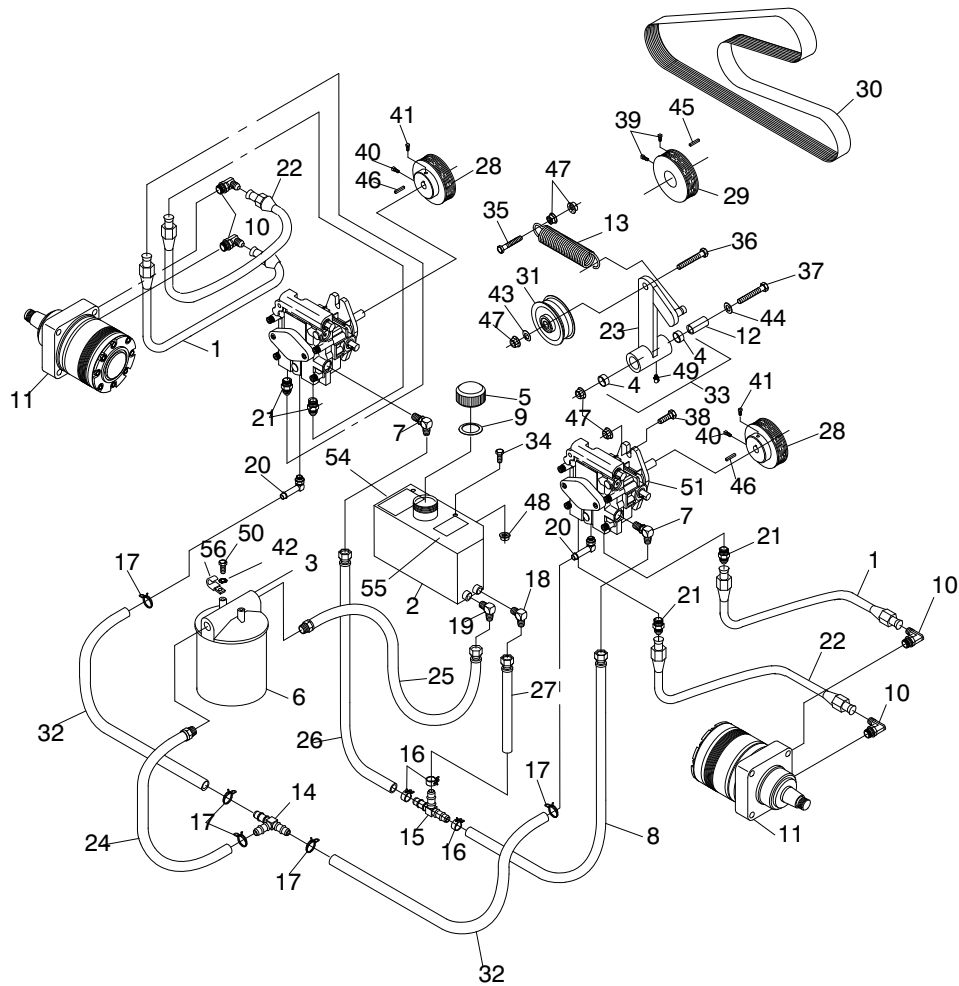


Sheet No.: 6

## Motion Control Lever

Ref. No.	Part No.	Qty.	Description
1	E303105	2	Yoke
2	E303327	4	Washer-Spring
3	E523027	2	Damper
4	E543017	2	Ball Joint
5	E603735	2	Bushing
6	E603737	2	Bolt
7	E603807	2	Spring
8	E809057	4	Screw-HSH
9	E603903	4	Spacer
10	E632191	1	Lever-Control LH
11	E632193	1	Lever-Control RH
12	E632208	2	Arm-Pump Control
13	E632213	1	Bracket-Motion Control LH
14	E632215	1	Bracket-Motion Control RH
15	E633153	2	Linkage
16	E633102	4	Bearing-Side Flange
17	E633152	2	Ball Joint LH
18	E633177	2	Arm
19	E633257	2	Grip
20	322-6	4	Screw-HH
21	323-4	8	Screw-HH
22	323-6	4	Screw-HH
23	323-9	6	Screw-HH
24	E803022	2	Screw-Set

Ref. No.	Part No.	Qty.	Description
25	32146-2	6	Nut-Hex Lock
26	3219-2	10	Nut
27	E804524	2	Nut
28	3220-2	2	Nut-Jam
29	3256-2	2	Washer-Flat
30	3256-3	4	Washer-Flat
31	3256-23	4	Washer-Flat
32	3272-5	2	Pin-Cotter
33	E808280	2	Pin-Clevis
34	32128-20	4	Nut-Lock
35	32128-43	8	Nut-Flange
36	32128-33	4	Nut-Hex Flange



Sheet No.: 7

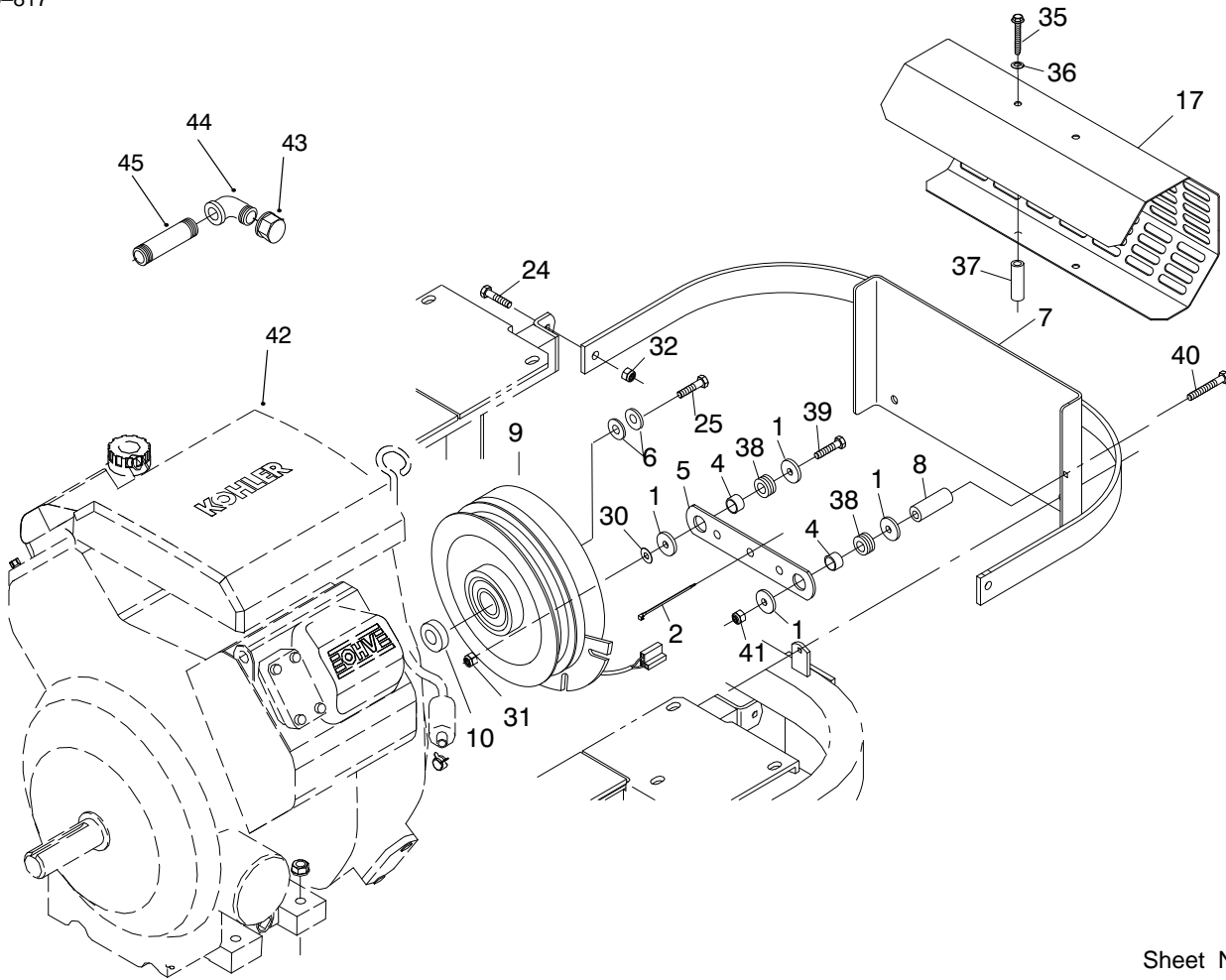
## Hydraulics

Ref. No.	Part No.	Qty.	Description
1	E403102	2	Hose
2	E512166	1	Tank-Hydraulic
3	E513006	1	Filter
4	E513034	2	Bearing-Pivot
5	E513167	1	Cap
6	E633750	1	Filter-Summer
6	E633752	1	Filter-Winter
7	E513840	2	Elbow
8	E522217	1	Hose ASM-Low Pressure
9	E523103	1	Gasket
10	E523222	4	Elbow
11	E523328	2	Motor-Wheel
11:1	E000099	2	Kit-Seal
11:2	E000139	2	Kit-Bearing
12	E603384	1	Bushing
13	E603413	1	Spring-Extension
14	E603721	1	Fitting-Tee
15	E603722	1	Fitting-Tee
16	E603826	3	Clamp-Hose
17	E603827	5	Clamp-Hose
18	E603987	1	Elbow
19	E603988	1	Elbow
20	E603989	2	Elbow
21	E603990	4	Adapter
22	E403102	2	Hose

Ref. No.	Part No.	Qty.	Description
23	E632201	1	Arm-Pump Idler
24	E632281	1	Hose ASM-Low Pressure
25	E632282	1	Hose ASM-Low Pressure
26	E632285	1	Hose ASM-Low Pressure
27	E632286	1	Hose ASM-Low Pressure
28	E633568	2	Sheave
29	E633567	1	Sheave
30	E633749	1	Belt
31	E633167	1	Pulley-Idler
32	E633335	2	Hose-Lo Pressure
33	E634277	1	Arm ASM Incl 4 23 49
34	321-4	2	Screw-HH
35	323-8	1	Screw-HH
36	323-9	1	Screw-HH
37	E800805	1	Screw-HH
38	E803016	4	Bolt
39	E803022	2	Screw-Set
40	3242-6	2	Screw-Set







Sheet No.: 15

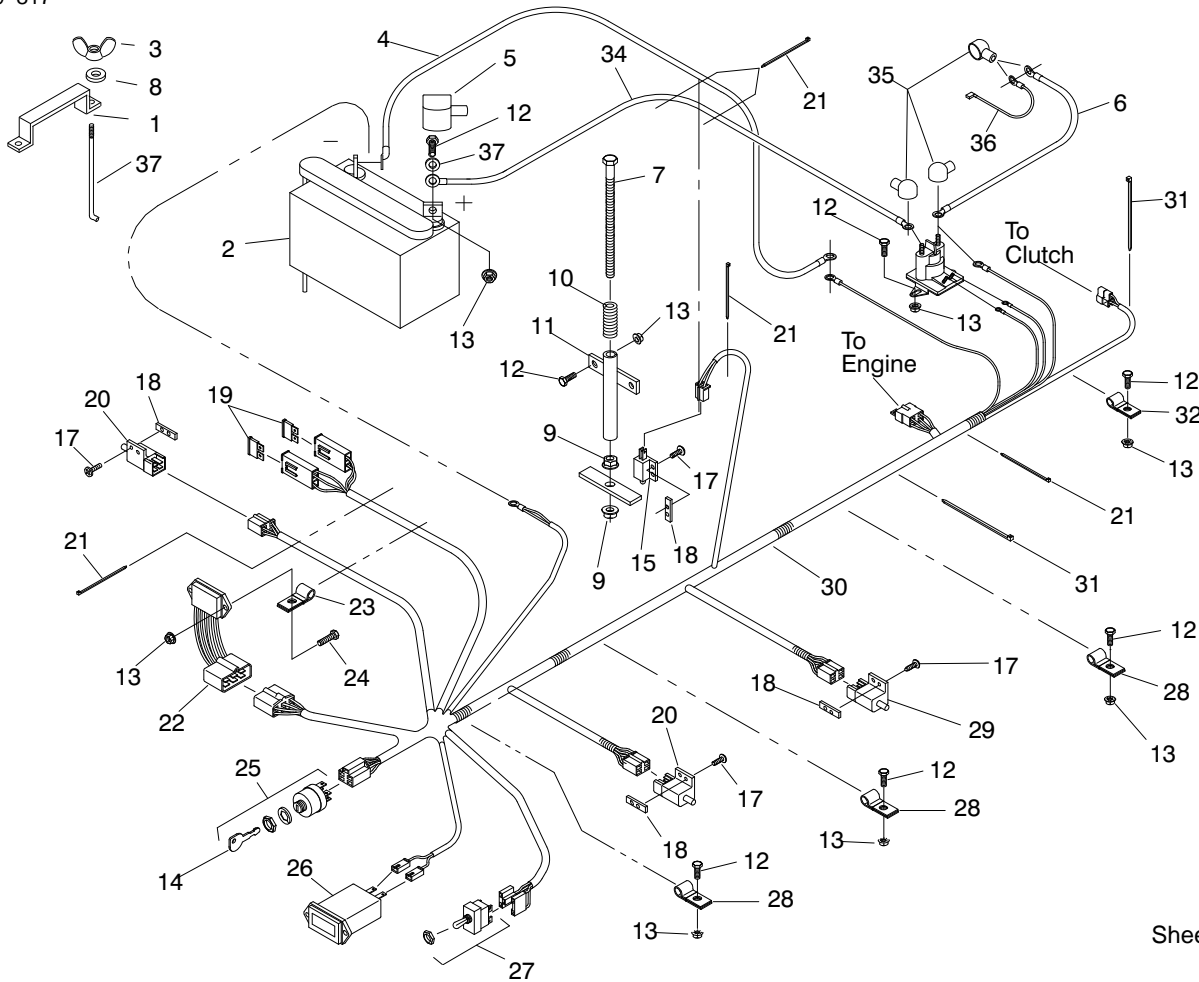
## Engine, Clutch & Muffler Shield

Ref. No.	Part No.	Qty.	Description
1	E613235	5	Washer
2	E303335	4	Tie-Plastic
4	E633545	2	Spacer
5	E633543	1	Strap
6	E603610	2	Disc-Spring
7	E632672	1	Guard-Engine
8	E633685	1	Spacer
9	E633098	1	Clutch
10	E633453	1	Spacer
17	E633466	1	Guard-Muffler
24	323-6	2	Screw-HH
25	3212-10	1	Screw-HH
30	3256-3	2	Washer-Flat
31	32128-20	1	Nut-Lock
32	32128-43	4	Nut-Flange
35	E809076	2	Screw-HH
36	E323235	2	Washer-Lock
37	E323236	2	Spacer
38	E633630	2	Grommet
39	322-6	1	Screw-HH
40	E800283	1	Screw-HH
41	E804256	1	Nut-Lock
42	E633089	1	Kohler Command CH22S PS-66529
+			
43	E543233	1	Cap

Ref. No.	Part No.	Qty.	Description
44	E403124	1	Elbow-Street
45	E543232	1	Nipple

+ Obtain Parts From Kohler





Sheet No.: 10

# Electrical System

Ref. No.	Part No.	Qty.	Description
1	E633652	1	Strap-Hold Down
2	E603479	1	Battery
3	E543792	2	Wingnut
4	E633307	1	Wire-Ground
5	E543391	1	Insulator Battery
6	E633306	1	Wire-Starter
7	E800282	1	Screw
8	3256-2	2	Washer-Flat
9	32128-20	2	Nut-Lock
10	E523415	1	Spring
11	E522424	1	Mount-Spring
12	321-4	10	Screw-HH
13	32128-33	11	Nut-Hex Flange
14	63-8360	2	Ignition Keys
15	E513152	1	Switch-Seat
16	E513180	1	Actuator-Switch
17	E803028	8	Screw
18	E633181	4	Plate
19	E816001	2	Fuse-20 Amp
20	E633111	2	Switch-Drive Lever
21	E303287	6	Tie-Plastic
22	E543316	1	Module-Interlock
23	E513762	1	Clip
24	321-6	1	Screw-HH
25	E543070	1	Ignition Switch
26	E513374	1	Meter-Hour

Ref. No.	Part No.	Qty.	Description
27	E633673	1	Switch
28	E633396	3	Clip
29	E633110	1	Switch-Brake
30	E633677	1	Harness-Wire
31	E303335	1	Tie-Plastic
32	E323229	1	Clip
33	E513075	1	Switch-Solenoid
34	E523281	1	Wire
35	E543393	3	Insulator Solenoid
36	E543084	1	Wire-Starter Solonoi
37	E633651	2	Bolt



