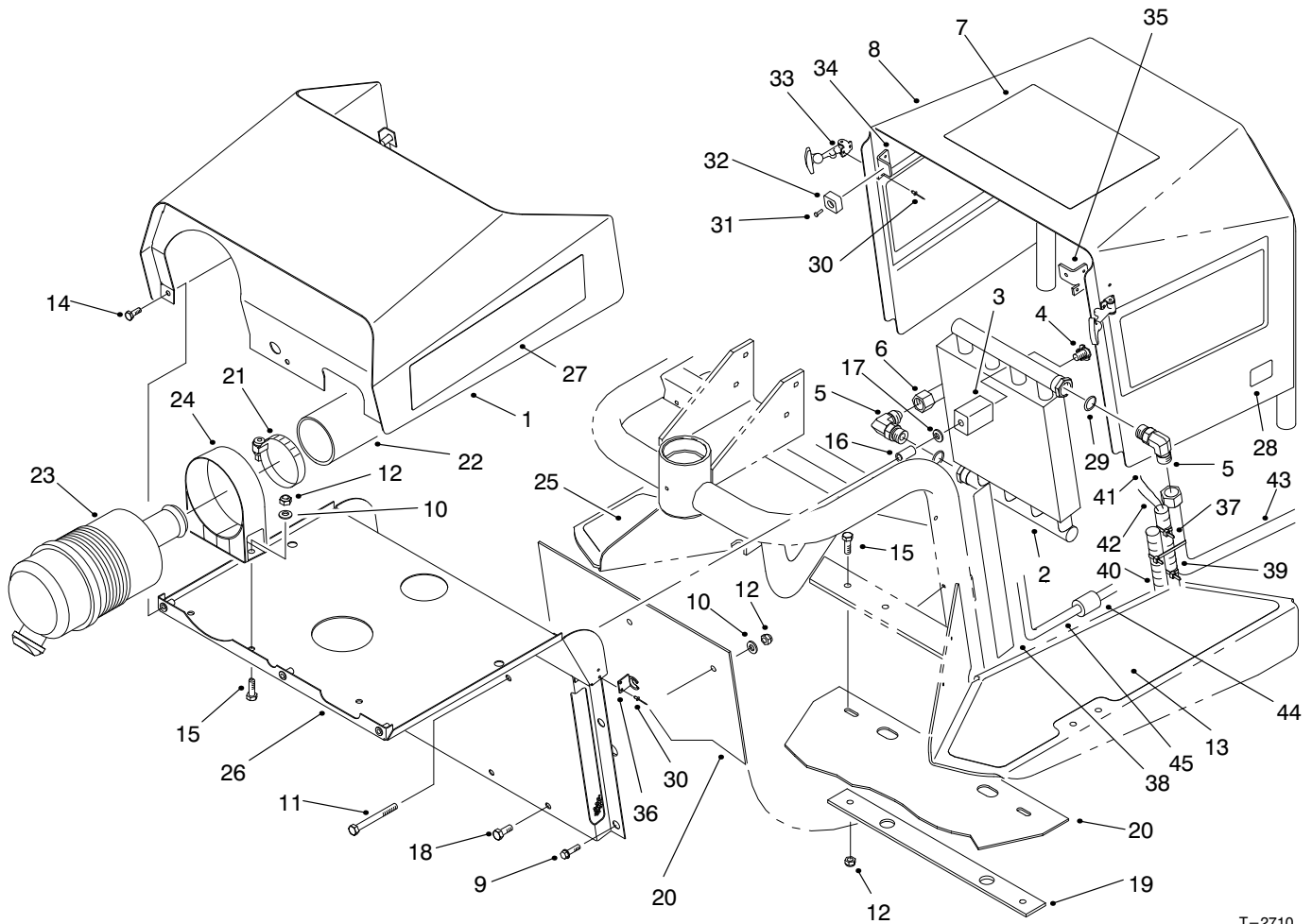




MODEL NO. 08885-80001 & UP

PARTS
CATALOG

SAND PRO® 3020

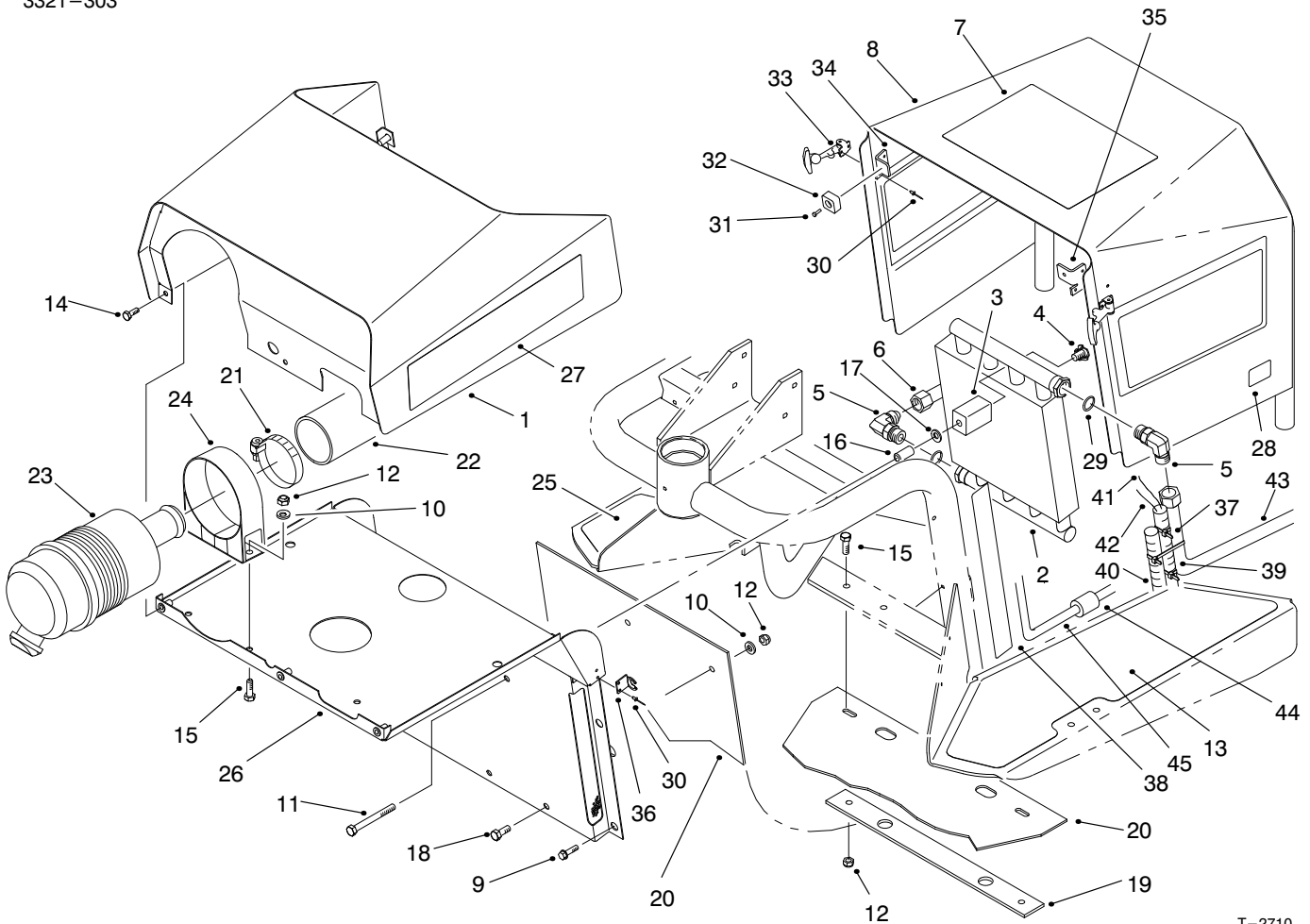


T-2710

SHROUDING & OIL COOLER ASSEMBLY

Ref. No.	Part No.	Description	No. Used
1	95-5818	Hood	1
2	92-8997	Cooler - Oil	1
3	85-9550	Clamp - Rubber	2
4	85-9670	T-Nut	2
5	353-371	Fitting - Hydraulic 90° (Incl. Ref. #29)	2
6	95-0643	Tube - Valve to Cooler	1
7	92-8985	Decal - Operating	1
8	95-0610	Asm-Cover (Incl. Ref. #7, 28, & 30-35)	1
9	46-8560	Screw - HFH	6
10	3256-23	Washer - Flat	4
11	322-14	Screw - HH	2
12	3296-29	Nut - Lock	6
13	92-7159	Tread - Floor, LH	1
14	3234-33	Screw - HFH	3
15	322-5	Screw - HH	4
16	95-5807	Spacer	2

Ref. No.	Part No.	Description	No. Used
17	3256-82	Washer - Flat	2
18	322-2	Screw - HH	2
19	95-0620	Strip - Retainer	1
20	95-5826	Shield - Rubber	1
21	2412-92	Clamp - Hose	2
22	95-0582	Hose - Air	1
23	95-5805	Asm-Air Cleaner	1
24	95-5806	Asm-Band, Mounting	1
25	92-7158	Tread - Floor, RH	1
26	95-5817	Shield - Front (Incl. Ref. #30 & 36)	1
27	95-0607	Decal - Sand Pro 3020	2
28	93-7252	Decal - CE Mark	1
29	237-79	O-Ring	2
30	3269-8	Rivet - Pop	6
31	3295-26	Rivet - Semi Tubular	2
32	94-1392	Pad - Rubber	2
33	117344	Handle - Latch	2



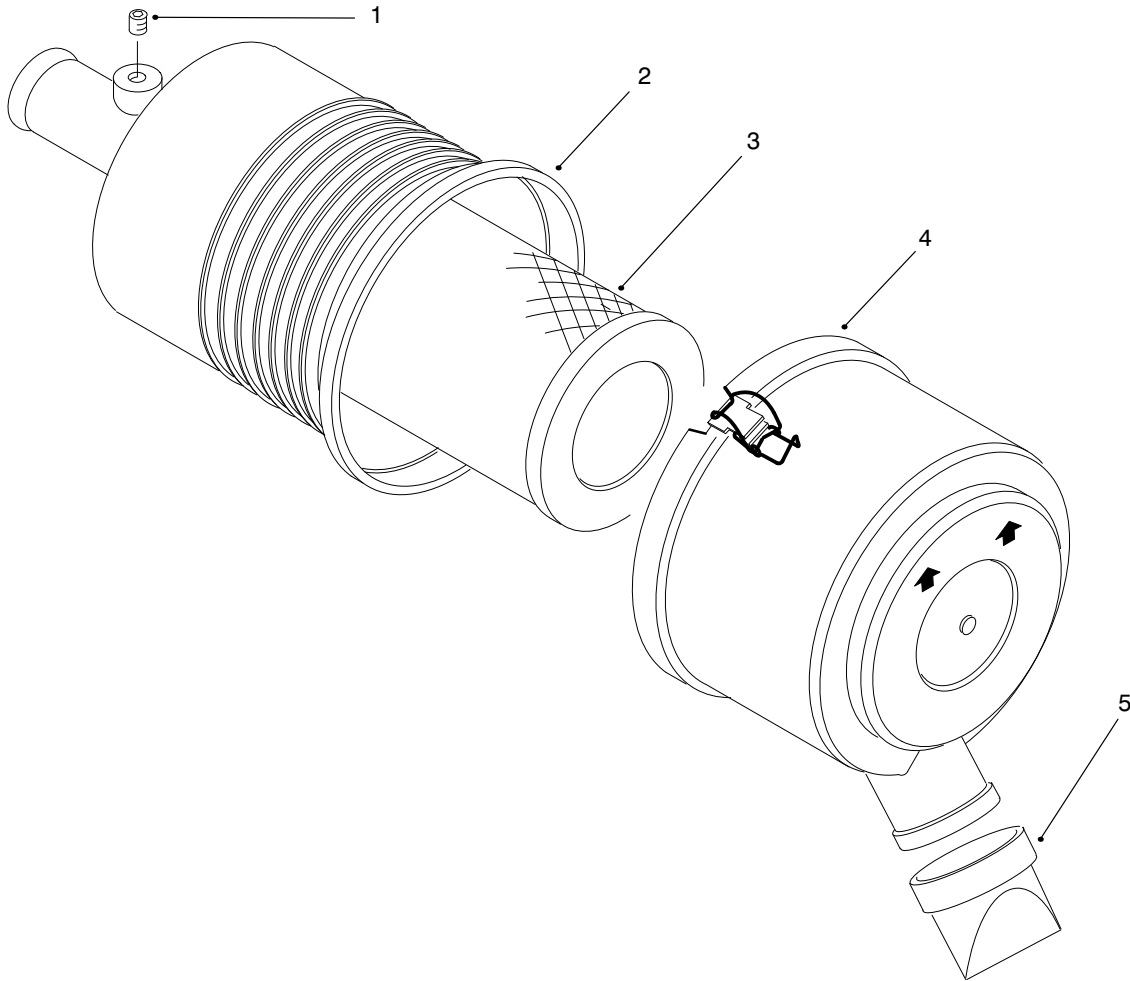
T-2710

SHROUDING & OIL COOLER ASSEMBLY (Continued)

Ref. No.	Part No.	Description	No. Used
34	95-0611	Bracket - RH	1
35	95-0612	Bracket - LH	1
36	249-40	Keeper	2
37	3290-379	Tie - Wire	3
38	95-5828	Strip - Wear	2
39	94-4519	Tube - Convoluted	1
40	95-0574	Wire Harness	1

Ref. No.	Part No.	Description	No. Used
41	95-5825	Asm - Wire	1
42	95-0599	Asm - Wire	1
43	95-0591	Hose - Hydraulic	1
44	38-3400	Snubber - Rubber	1
45	95-0563	Tube - Front, Motor LH	1
*	95-7861	Decal - Infield Pro 3020	2

*Not Illustrated



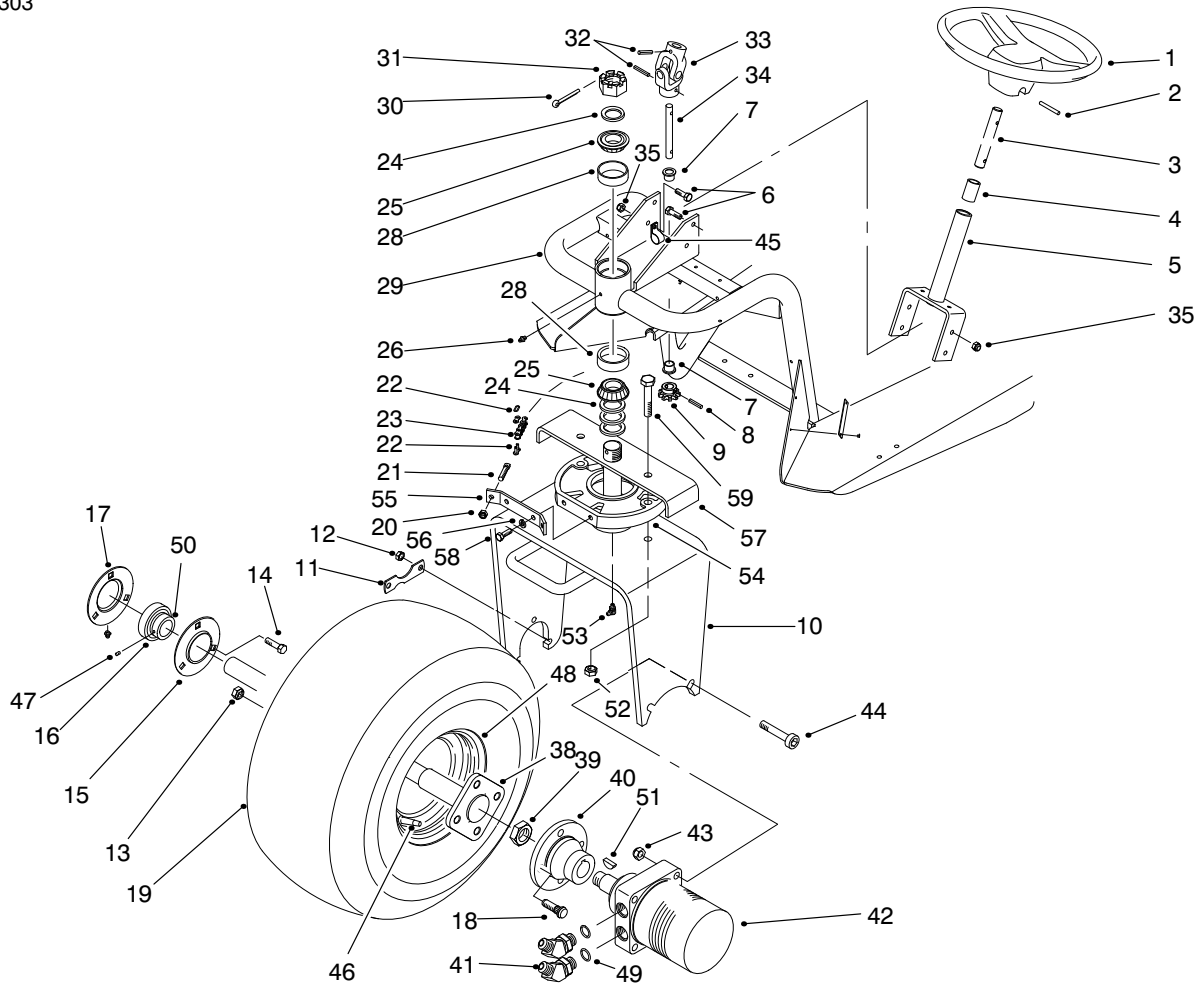
T-2607

AIR CLEANER ASSEMBLY NO. 95-5805

Ref. No.	Part No.	Description	No. Used
1	285-17	Plug	1
2		Asm-Body	1
3	93-2195	Element - Air Cleaner	1

Ref. No.	Part No.	Description	No. Used
4	94-3652	Asm-Cover	1
5	94-1414	Valve - Vacuumator	1

*Not Illustrated

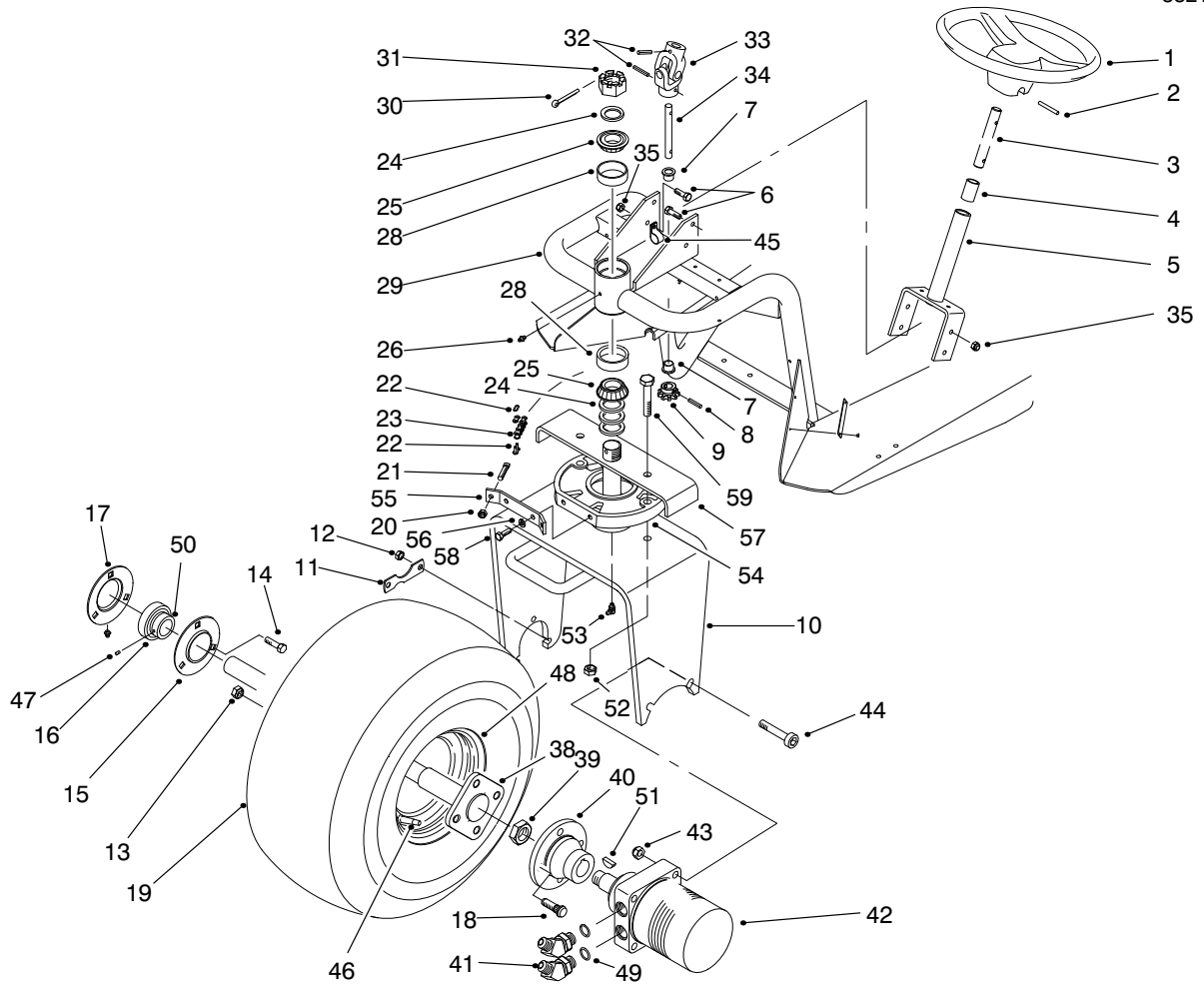


T-2608-4

FRONT WHEEL & STEERING ASSEMBLY

Ref. No.	Part No.	Description	No. Used
1	76-1420	Wheel - Steering	1
2	32121-111	Pin - Spiral	1
3	85-6610	Shaft - Steering Upper	1
4	256-185	Bushing - Sleeve	1
5	92-5035	Asm-Steering Shaft (Incl. Ref. #4)	1
6	322-5	Screw - HH	4
7	65-8770	Bushing - Flange	2
8	98-0973	Pin - Grooved	1
9	85-9180	Sprocket	1
10	98-0950	Fork	1
11	88-8350	Tab - Bearing	1
12	3296-39	Nut - Lock	3
13	242-50	Nut - Lug	4
14	323-29	Screw - HH	3
15	85-8950	Flangette - Standard	1
16	251-352	Asm-Bearing (Incl. Ref. #47 & 50)	1
17	85-8940	Flangette - Relube	1
18	10-6830	Stud - Drive	4
19	85-8290	Tire	1
20	3296-4	Nut - Lock	2
21	18-6380	Pin - Steering Adjustment	2
22	2710-11	Link - Connecting	2
23	92-5039	Chain	1
24	18-6320	Washer - Steering	4
25	254-70	Cone - Bearing	2

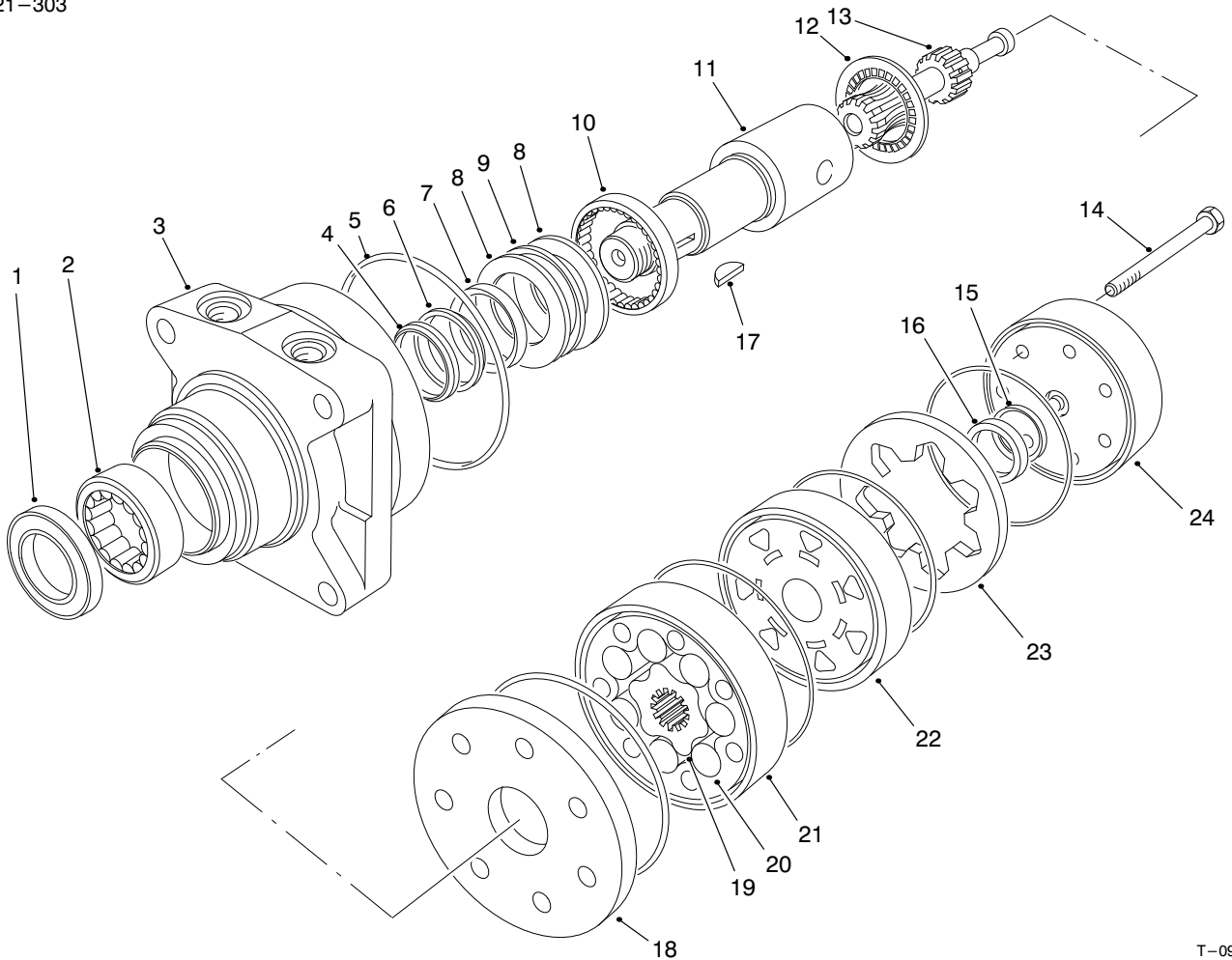
Ref. No.	Part No.	Description	No. Used
26	302-2	Fitting - Grease	1
28	254-61	Cup - Bearing	2
29	95-0600	Asm-Frame (Incl. Ref. #7)	1
30	3272-37	Pin - Cotter	1
31	32136-9	Nut - Slotted	1
32	32121-15	Pin - Spiral	2
33	85-9200	Knuckle - Steering	1
34	98-0928	Shaft - Steering, Lower	1
35	3296-29	Nut - Lock	4
38	92-8969	Spindle	1
39	26-3790	Nut - Lock	1
40	93-6838	Hub - Wheel	1
41	353-427	Fitting - Hydraulic 45° (Incl. Ref. #49)	2
42	75-9830	Motor - Hydraulic, Wheel (Incl. Ref. #51)	1
43	3296-23	Nut - Lock	2
44	3274-93	Screw - HSH	2
45	94-6821	R-Clamp	2
46	232-35	Stem - Valve	1
47		Screw - Set	2
48	94-6116	Rim - Wheel	1
49	237-80	O-Ring	2
50		Collar - Locking	1
51	3257-42	Key - Woodruff	1
52	3296-25	Nut - Hex.	2



T-2608-4

FRONT WHEEL & STEERING ASSEMBLY (Continued)

Ref. No.	Part No.	Description	No. Used	Ref. No.	Part No.	Description	No. Used
53	302-33	Fitting - Grease	2	57	92-7179	Plate - Chain Stop	1
54	98-0924	Guide - Chain	1	58	322-2	Screw - HH	2
55	98-0925	Bracket - Chain	1	59	325-10	Screw - HH	2
56	3253-4	Washer - Lock	2				



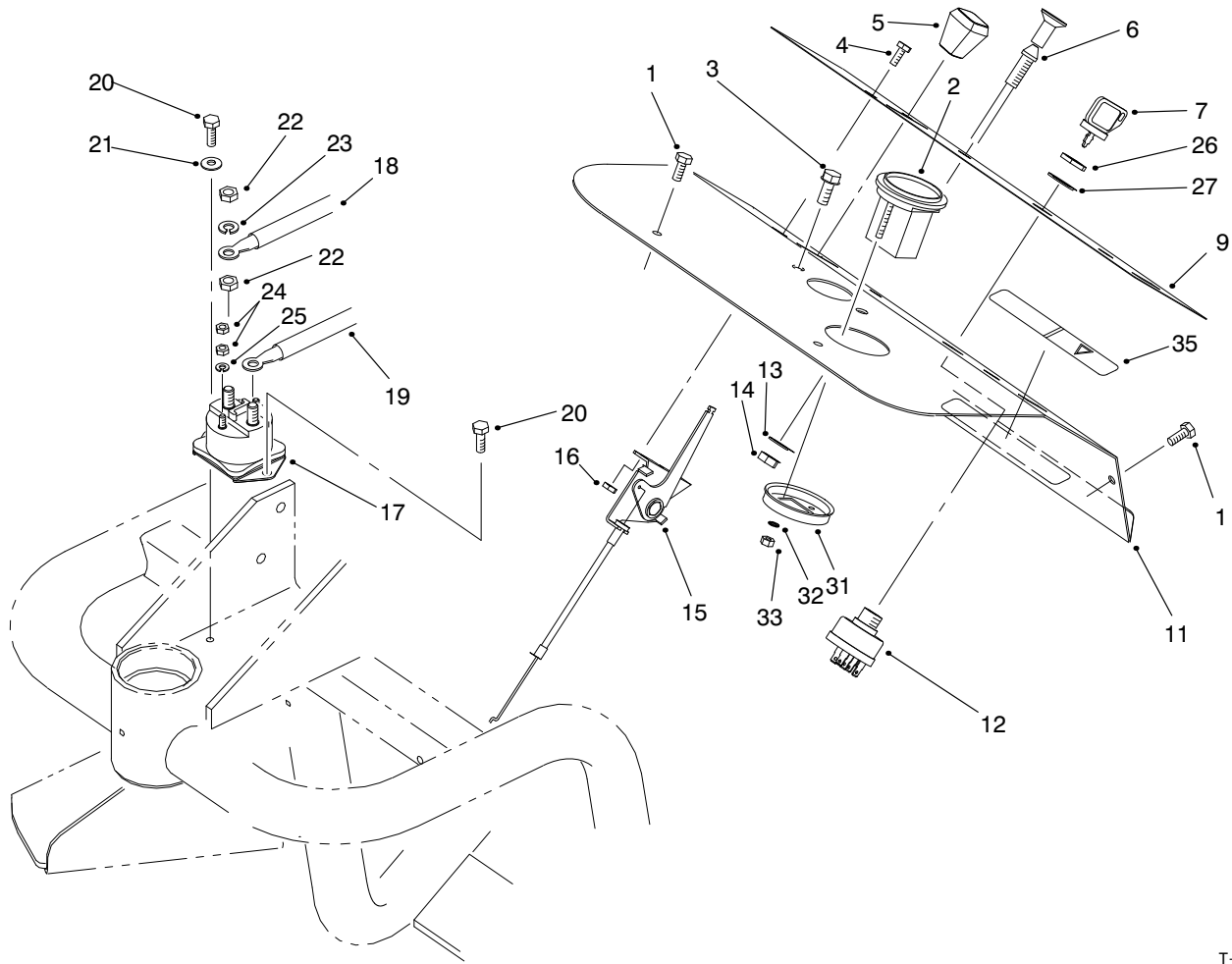
T-0983-2

HYDRAULIC DRIVE MOTOR FRONT NO. 75-9830

Ref. No.	Part No.	Description	No. Used
1		Seal - Dirt & Water	1
2		Bearing	1
3		Housing	1
4		Washer - Backup	1
5		Seal - Rings	5
6		Washer - Backup	1
7		Seal - Inner	1
8		Washer - Thrust	2
9		Bearing - Thrust	1
10		Bearing	1
11	76-0860	Shaft - Coupling	1
12	76-0850	Bearing - Thrust	1
13	76-0820	Link - Drive	7
14	76-1030	Screw - HH	1
15		Seal - Commutator	1
16		Commutator	1

Ref. No.	Part No.	Description	No. Used
17	3257-42	Key - Woodruff	1
18	76-0870	Plate - Wear	1
19		Rotor	1
20		Vane	7
21		Stator	1
22	76-0840	Manifold	1
23		Ring - Commutator	1
24	76-0940	Asm - Cover, End	1
*	76-0950	Rotor Set (Incl. Ref. #19-21)	1
*	76-0880	Asm - Commutator (Incl. Ref. #15, 16 & 23)	1
*	94-8178	Kit - Seal (Incl. Ref. #1, 4-7 & 15)	1
*	76-0810	Asm - Housing (Incl. Ref. #2, 3 & 8-10)	1

*Not Illustrated

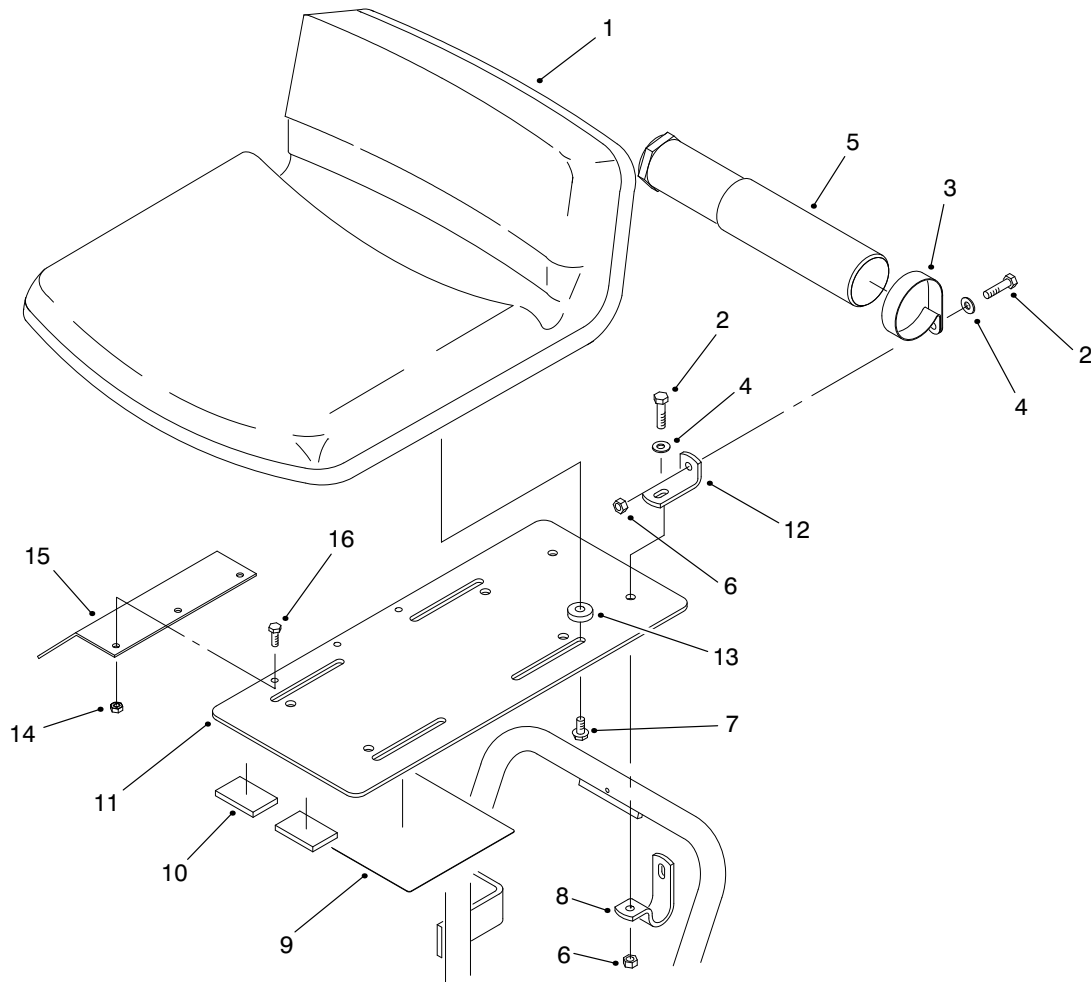


T-2589-3

DASH PANEL ASSEMBLY

Ref. No.	Part No.	Description	No. Used
1	3234-33	Screw - HH	4
2	66-2950	Asm - Hourmeter (Incl. Ref. #31-33)	1
3	32144-11	Screw - HFH.	2
4	32105-2	Screw - HH	2
5	66-0120	Knob - Throttle	1
6	95-0597	Asm - Choke Control	1
7	63-8360	Key - Ignition	2
9	95-0648	Decal - Dash	1
11	95-0588	Panel - Dash	1
12	83-0020	Asm - Ignition Switch (Incl. Ref. #26 & 27)	1
13	3254-6	Washer - Lock ITLW	1
14	3219-3	Nut - Hex.	1
15	95-0598	Control - Throttle	1
16	3296-12	Nut - Lock	2

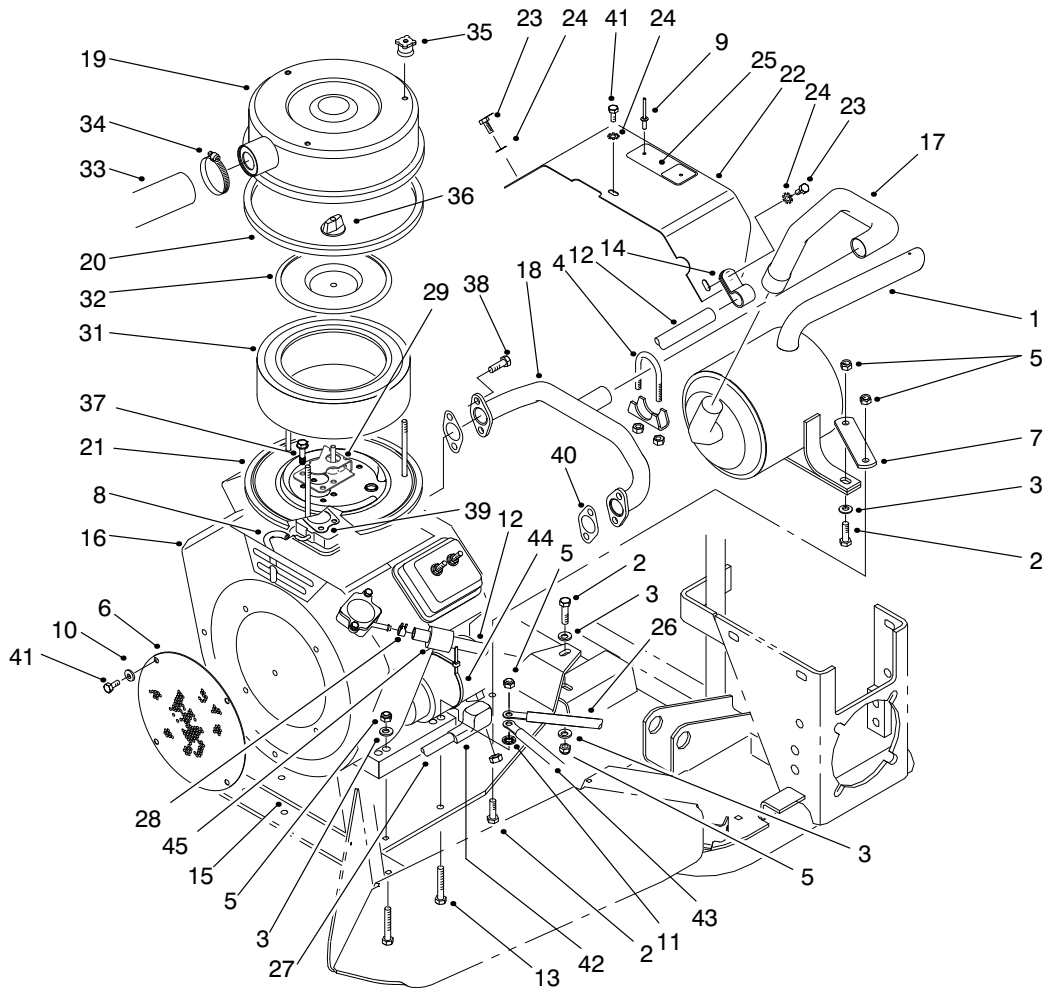
Ref. No.	Part No.	Description	No. Used
17	28-4210	Solenoid - Starter	1
18	95-5825	Asm - Wire	1
19	95-0599	Asm - Wire	1
20	32104-95	Screw - Self Tapping	2
22	3218-13	Nut - Jam	2
23	3253-4	Washer - Lock	2
24	3219-14	Nut - Hex.	4
25	3253-17	Washer - Lock	2
26	218-461	Nut - Hex.	1
27	3254-5	Washer - Lock ITLW	1
31		Clamp - Mounting	1
32	3255-20	Washer - Lock ITLW	2
33	3217-25	Nut - Hex.	2
34	95-0574	Harness - Wire	1
35	93-9052	Decal - Shields	1



T-2586-2

SEAT ASSEMBLY

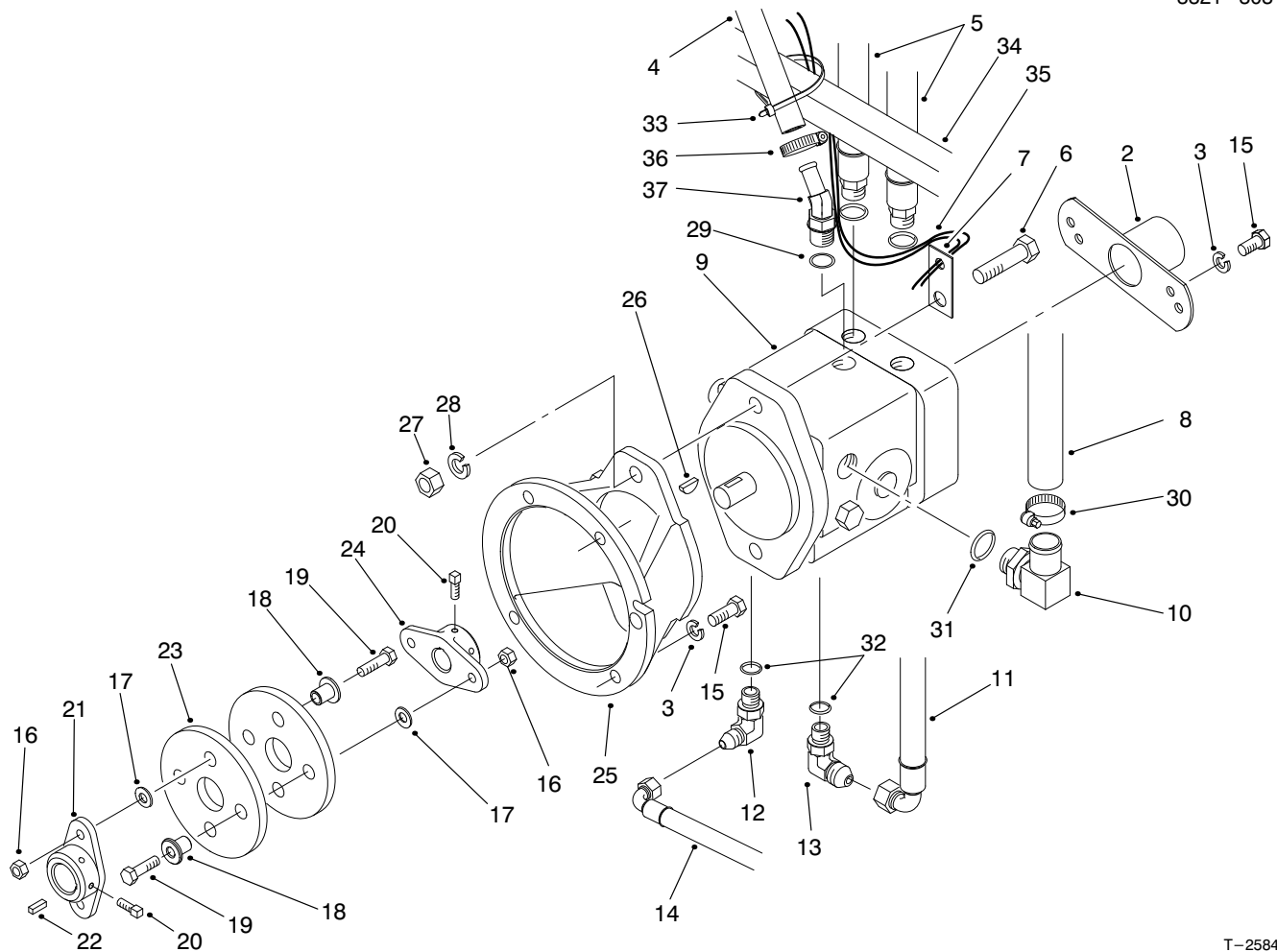
Ref. No.	Part No.	Description	No. Used	Ref. No.	Part No.	Description	No. Used
1	92-8976	Seat	1	9	93-7251	Decal - Service (Europe)	1
2	322-6	Screw - Hex. Hd.	4	10	74-0340	Cushion - Rubber	2
3	2412-133	Clamp - R	2	11	95-0637	Plate - Seat	1
4	3256-3	Washer - Flat	4	12	92-8973	Angle	2
5	74-0720	Tube - Manual	1	13	62-6660	Spacer	4
6	3296-29	Nut - Lock	4	14	3296-42	Nut - Lock	3
7	3234-5	Screw - Hex. Hd.	4	15	95-5840	Shield - Seat Base	1
8	92-8972	Clamp - Seat	2	16	321-4	Screw - Hex. Hd.	3
9	95-0646	Decal - Service	1				



T-2588-5

ENGINE INSTALLATION ASSEMBLY

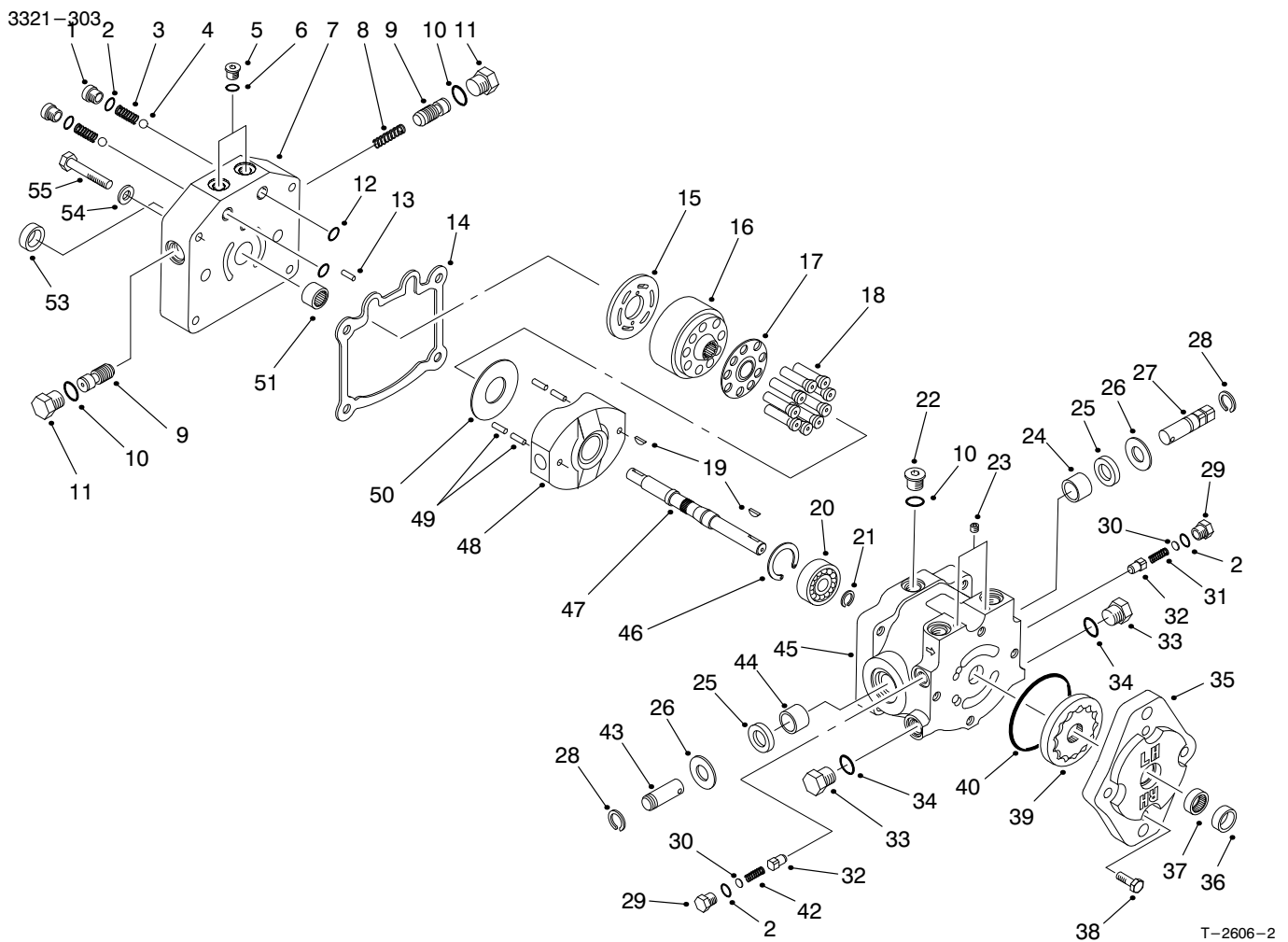
Ref. No.	Part No.	Description	No. Used	Ref. No.	Part No.	Description	No. Used
1	95-0552	Muffler	1	23	33113-012	Screw - HH	2
2	322-6	Screw - HH	3	24	3255-7	Washer - Lock, Int. Tooth	3
3	3256-23	Washer - Flat	6	25	95-0645	Plate - Hot Surface	1
4	95-0586	Asm-Clamp, Muffler	2	26	86-7450	Wire - Battery, Ground	1
5	3296-29	Nut - Hex.	7	27	86-7570	Asm-Wire	1
6	92-8996	Screen	1	28	2412-98	Clamp - Hose	1
7	95-0557	Bracket - Muffler	1	29	98-0992	Shield - Carburetor, Inlet	1
8	75-4705	Hose - Fuel	1	31	83-1770	Element - Air Cleaner	1
9	3269-32	Rivet - Pop	2	32	85-0420	Plate - Cover	1
10	3256-1	Washer - Flat	4	33	95-0582	Hose - Air	1
11	3255-8	Washer - Lock, Ext. Tooth	1	34	2412-92	Clamp - Hose	1
12	95-0619	Hose - Gas Line	1	35	88-8640	Knob - Air Cleaner	3
13	322-10	Screw - HH	4	36	85-0430	Knob - Air Cleaner	1
14	2412-73	R-Clamp	1	37	98-8154	Screw - Washer Face	5
15	95-0556	Base - Engine	1	38	85-0540	Screw	4
16	98-0940	Asm-Engine	1	39	85-0470	Gasket - Carburetor	1
17	95-0551	Tube - Exhaust	1	40		Gasket - Manifold	2
18	95-0550	Asm-Manifold	1	41	33113-008	Screw	5
19	85-8370	Asm-Cover, Air Cleaner	1	42	83-2490	Boot	1
20	85-8360	Gasket - Ring	1	43	95-0574	Harness - Wire	1
21	85-8430	Asm-Base, Air Cleaner	1	44	3290-379	Tie - Cable	1
22	95-5827	Shield - Muffler (Incl. Ref. #9 & 25)	1	45	38-3400	Bumper	1



T-2584-5

HYDRAULIC PUMP INSTALLATION ASSEMBLY

Ref. No.	Part No.	Description	No. Used	Ref. No.	Part No.	Description	No. Used
2	95-0632	Asm-Cover	1	18	71-4411	Spacer - Coupling	4
3	3253-5	Washer - Lock	6	19	322-17	Screw - HH	4
4	98-8153	Hose - Return	1	20	3241-5	Screw - Set, Square Hd.	4
5	95-0595	Asm-Hydraulic Hose (Incl. Ref. #29)	2	21	27-1960	Hub - Engine	1
6	325-7	Screw - HH	2	22	10-7070	Key - Square	1
7	26-2950	Standoff - Wire	1	23	80-8650	Coupling - Rubber	2
8	95-0555	Hose - Suction	1	24	49-9600	Hub - Pump	1
9	95-0587	Asm-Hydraulic Pump (Incl. Ref. #26)	1	25	95-0631	Mount - Pump	1
10	95-0629	Fitting - Hose, Push On (Incl. Ref. #31)	1	26	3257-32	Key - Woodruff	1
11	95-0592	Hose - Hydraulic	1	27	3217-9	Nut - Hex.	2
12	353-511	Fitting - Hydraulic 90° (Incl. Ref. #32)	1	28	3253-7	Washer - Lock	2
13	353-374	Fitting - Hydraulic 90° (Incl. Ref. #32)	1	29	237-79	O-Ring	3
14	95-0591	Hose - Hydraulic	1	30	2412-129	Clamp - Hose	1
15	323-6	Screw - HH	6	31	237-80	O-Ring	1
16	3296-29	Nut - Lock	4	32	237-42	O-Ring	2
17	3256-23	Washer - Flat	4	33	3290-378	Tie - Cable	1
				34	22-4670	Hose - Hydraulic	2
				35	95-0574	Harness - Wire	1
				36	2412-36	Clamp	1
				37	354-126	Fitting - Barb (Incl. Ref. #29)	1

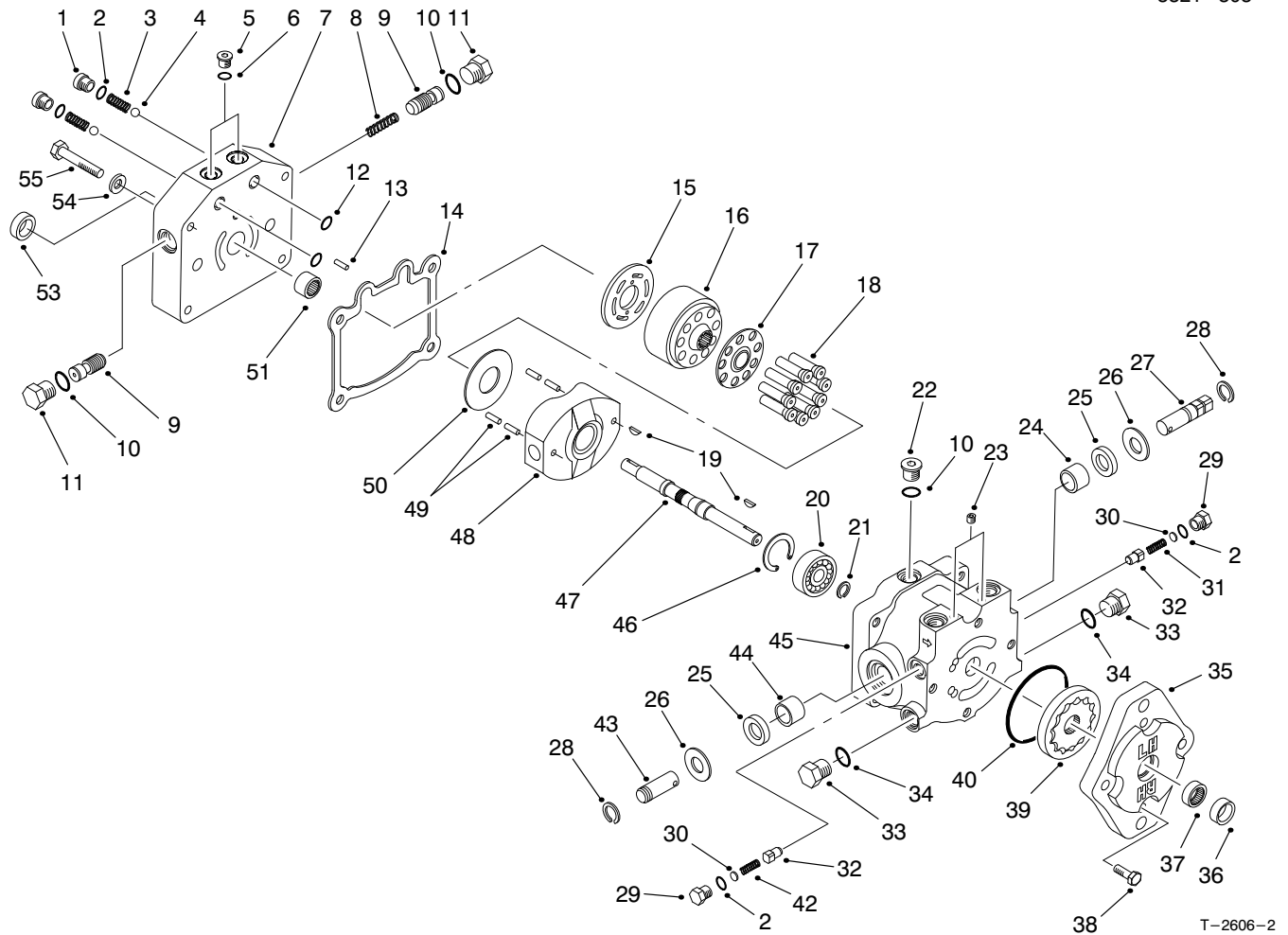


T-2606-2

HYDRAULIC PUMP ASSEMBLY NO. 95-0587

Ref. No.	Part No.	Description	No. Used
1	25-2650	Plug	2
2	237-86	O-Ring	4
3	25-2640	Spring	2
4	25-2490	Ball	2
5	92-8776	Plug (Incl. Ref. #6)	2
6	92-8777	O-Ring	2
7	95-5808	Cap - End	1
8	95-5815	Spring - Valve, Acceleration	1
9	95-5814	Valve - Acceleration	2
10	237-79	O-Ring	3
11	95-5816	Plug (Incl. Ref. #10)	2
12	237-30	O-Ring	2
13	25-2430	Pin	1
14	25-2400	Gasket - Cap, End	1
15	95-5811	Plate - Valve	1
16	25-2600	Kit - Cylinder Block (Incl. Ref. #17-18)	1
17		Retainer - Slipper	1
18		Asm - Piston	9
19	3257-32	Key - Woodruff	2
20	95-5809	Ball Bearing	1
21	95-5813	Ring - Retaining	1
22	353-988	Plug (Incl. Ref. #10)	1

Ref. No.	Part No.	Description	No. Used
23	285-17	Plug - Pipe	2
24	88-8190	Bearing - Journal	1
25	25-3210	Seal - Lip	2
26	25-2510	Washer	2
27	88-8180	Shaft - Trunnion	1
28	32151-46	Ring - Retaining	2
29	25-2460	Plug (Incl. Ref. #2)	2
30	25-2470	Kit - Shim	2
31	25-2570	Spring	1
32	83-7260	Cone - Charge Relief	2
33	88-8210	Plug (Incl. Ref. #34)	2
34	237-80	O-Ring	2
35	25-2690	Housing - Pump, Charge	1
36	67-8060	Seal - Lip	1
37	67-8050	Bearing - Needle	1
38	322-4	Screw - HH	4
39	95-5812	Asm. - Gerotor	1
40	237-95	O-Ring	1
42	25-2480	Spring	1
43	25-2500	Shaft - Trunnion	1
44	252-82	Bearing - Needle	1
45	88-8170	Asm - Housing, Variable (Incl. Ref. #24, 25, & 44)	1
46	32120-11	Ring - Retaining	1

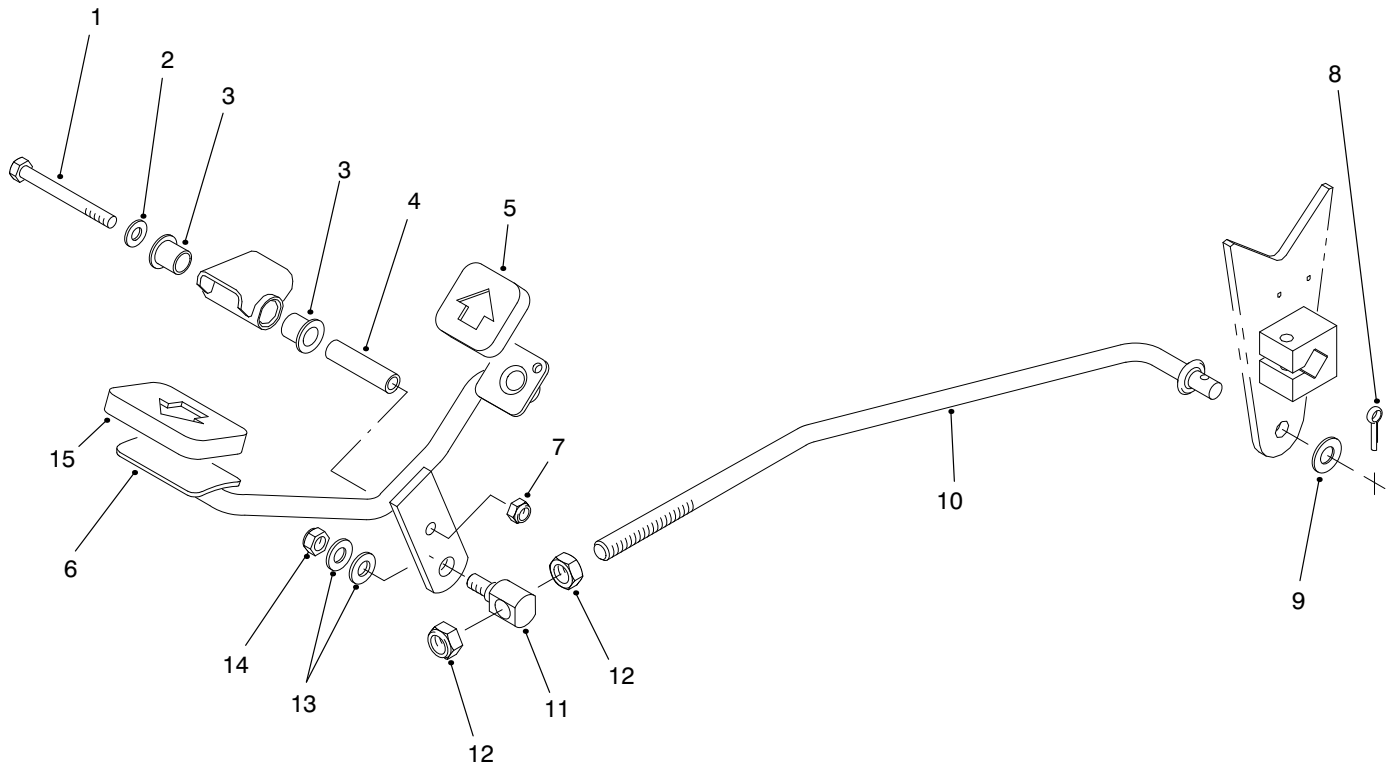


T-2606-2

HYDRAULIC PUMP ASSEMBLY NO. 95-0587 (Continued)

Ref. No.	Part No.	Description	No. Used	Ref. No.	Part No.	Description	No. Used
47	95-5810	Shaft	1	*	25-3180	Kit-Valve, Check (Incl. Ref. #1-4)	1
48	25-2450	Swashplate	1	*	49-8520	Kit-Implement Relief (Incl. Ref. #2 & 29-32)	1
49	32121-91	Pin - Spring	4	*	49-8510	Kit-Relief, Charge (Incl. Ref. #2, 29, 30 & 41-42)	1
50	25-2380	Plate - Thrust	1				
51	46-8400	Bearing - Roller	1				
53	88-8230	Seal - Lip	1				
54		Washer	1				
55	323-45	Screw - HH	4				

*Not Illustrated

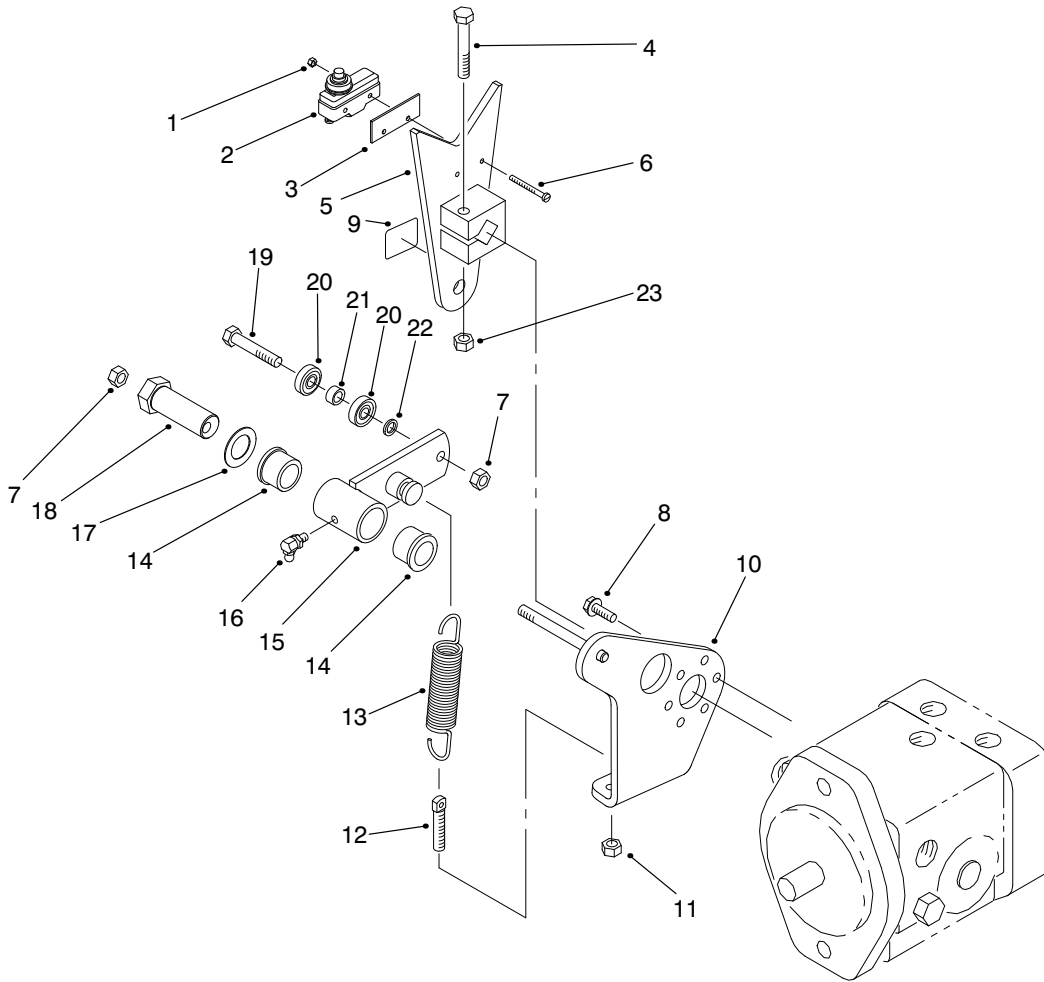


T-2582

TRACTION PEDAL ASSEMBLY

Ref. No.	Part No.	Description	No. Used
1	322-14	Screw - HH	1
2	3256-23	Washer - Flat	1
3	256-219	Bushing - Flange	2
4	85-8960	Spacer	1
5	74-9110	Pad - Pedal, Reverse	1
6	92-2343	Pedal	1
7	3296-29	Nut - Lock	1
8	3272-16	Pin - Cotter	1

Ref. No.	Part No.	Description	No. Used
9	3256-25	Washer - Flat	1
10	95-0584	Rod - Pump, Control	1
11	92-2344	Stud - Adjuster, Trunnion	1
12	3218-5	Nut - Jam	2
13	3256-24	Washer - Flat	2
14	3296-39	Nut - Lock	1
15	74-9100	Pad - Pedal, Forward	1

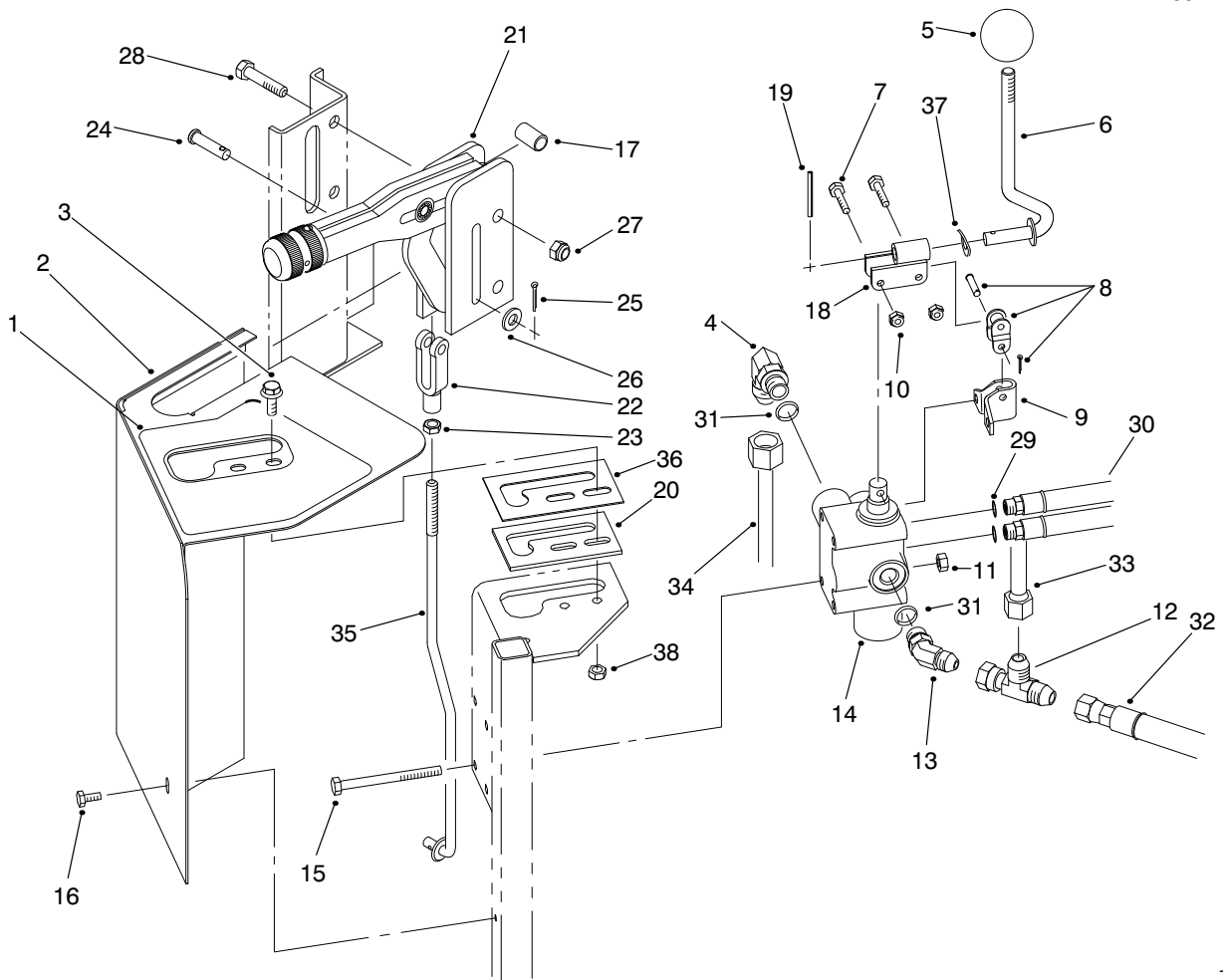


T-2583-2

PUMP CONTROL LEVER ASSEMBLY

Ref. No.	Part No.	Description	No. Used
1	3296-9	Nut - Lock	2
2	29-6163	Switch - Neutral	1
3	85-9150	Plate - Switch	1
4	323-10	Screw - HH	1
5	85-8300	Lever - Pump	1
6	32105-21	Screw - Machine	2
7	3296-29	Nut - Lock	2
8	49-2040	Screw - HFH	3
9	93-9051	Decal - Eccentric Bolt	1
10	95-0553	Plate - Pump	1
11	3296-4	Nut - Lock	1
12	18-6380	Pin - Steering, Adjust	1

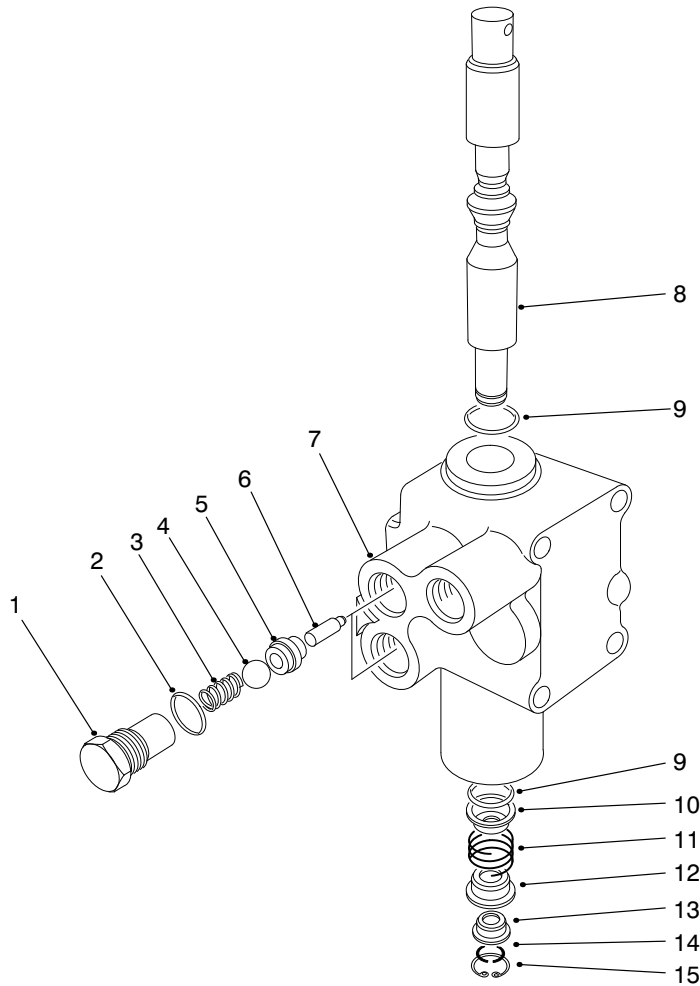
Ref. No.	Part No.	Description	No. Used
13	85-9030	Spring - Extension	1
14	256-113	Bushing - Flange	2
15	85-8460	Asm - Switch Arm (Incl. Ref. #14 & 16)	1
16	302-60	Fitting - Grease	1
17	3-6498	Washer - Thrust	1
18	76-8640	Stud - Traction	1
19	322-8	Screw - HH	1
20	251-307	Bearing	2
21	85-9120	Spacer	1
22	75-5470	Spacer	1
23	3296-39	Nut - Lock	1



T-2595-3

LIFT VALVE INSTALLATION ASSEMBLY

Ref. No.	Part No.	Description	No. Used	Ref. No.	Part No.	Description	No. Used
1	95-0647	Decal - Control Panel	1	20	21-8640	Latch - Lever, Valve	1
2	95-0601	Shroud - Lift Valve	1	21	95-0636	Lever - Brake	1
3	3234-4	Screw - HH	2	22	282-2	Clevis	1
4	353-511	Fitting - Hydraulic 90° (Incl. Ref. #31)	1	23	3220-2	Nut - Hex.	1
5	233-21	Knob	1	24	283-14	Pin - Clevis	1
6	92-8981	Lever - Lift	1	25	3272-6	Pin - Cotter	1
7	3290-360	Screw - HH	2	26	3256-23	Washer - Flat	1
8	2710-20	Link - Offset	1	27	3296-29	Nut - Lock	2
9	88-8480	Bracket - Pivot	1	28	322-8	Screw - HH	2
10	3296-2	Nut - Lock	2	29	237-78	O-Ring	2
11	3296-42	Nut - Lock	4	30	22-4670	Hose - Hydraulic (Incl. Ref. #29)	2
12	353-877	Fitting - Swivel Run Tee	1	31	237-42	O-Ring	2
13	353-212	Fitting - Hydraulic 45° (Incl. Ref. #31)	1	32	95-0592	Hose - Hydraulic	1
14	43-1710	Asm - Valve	1	33	95-0575	Tube - Valve, Shuttle	1
15	321-23	Screw - HH	4	34	95-0643	Tube - Hydraulic	1
16	32104-76	Screw - Self Tapping	1	35	95-0628	Rod - Brake	1
17	85-0290	Spacer - Support, Seat	2	36	95-5833	Guide - Lever, Lift	1
18	92-8983	Pivot	1	37	3290-477	Washer - Wave	1
19	32121-73	Pin - Spring	1	38	3296-16	Nut - Lock	2



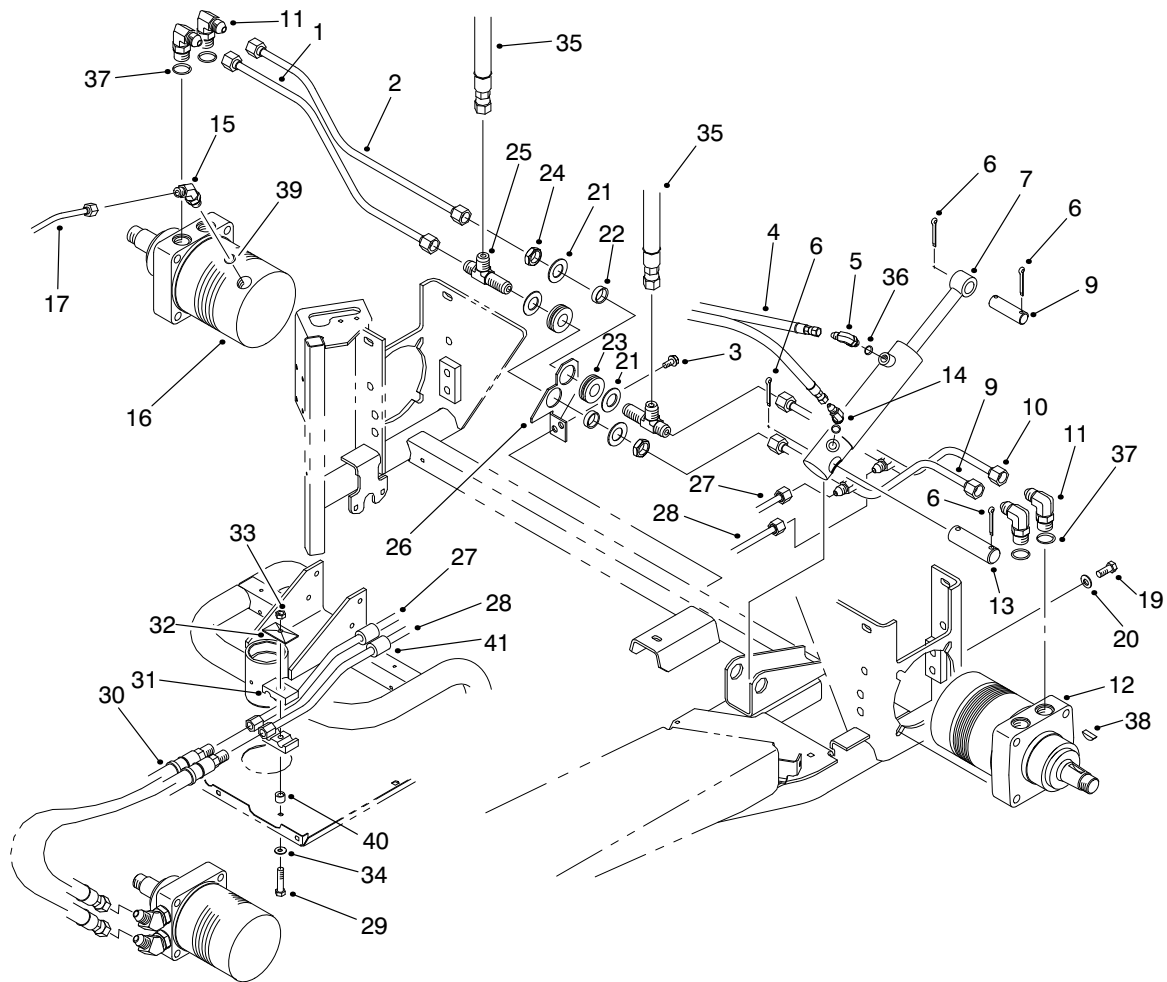
T-0428-2

HYDRAULIC LIFT VALVE ASSEMBLY NO. 43-1710

Ref. No.	Part No.	Description	No. Used
1	22-8330	Plug	2
2	237-42	O-Ring	2
3	22-8340	Spring	2
4	22-8350	Ball	2
5	22-8370	Seat - Check Valve	2
6	22-8360	Pin - Cam	2
†7		Body	1
8	22-8420	Spool	1

Ref. No.	Part No.	Description	No. Used
9	22-8500	O-Ring	2
10	22-8380	Retainer - Spring	2
11	22-8410	Spring	1
12	22-8390	Spring Retainer	1
13	22-8400	Spacer Float	1
14	22-8480	Ring - Spool Retaining	1
15	22-8490	Ring - Retaining	1

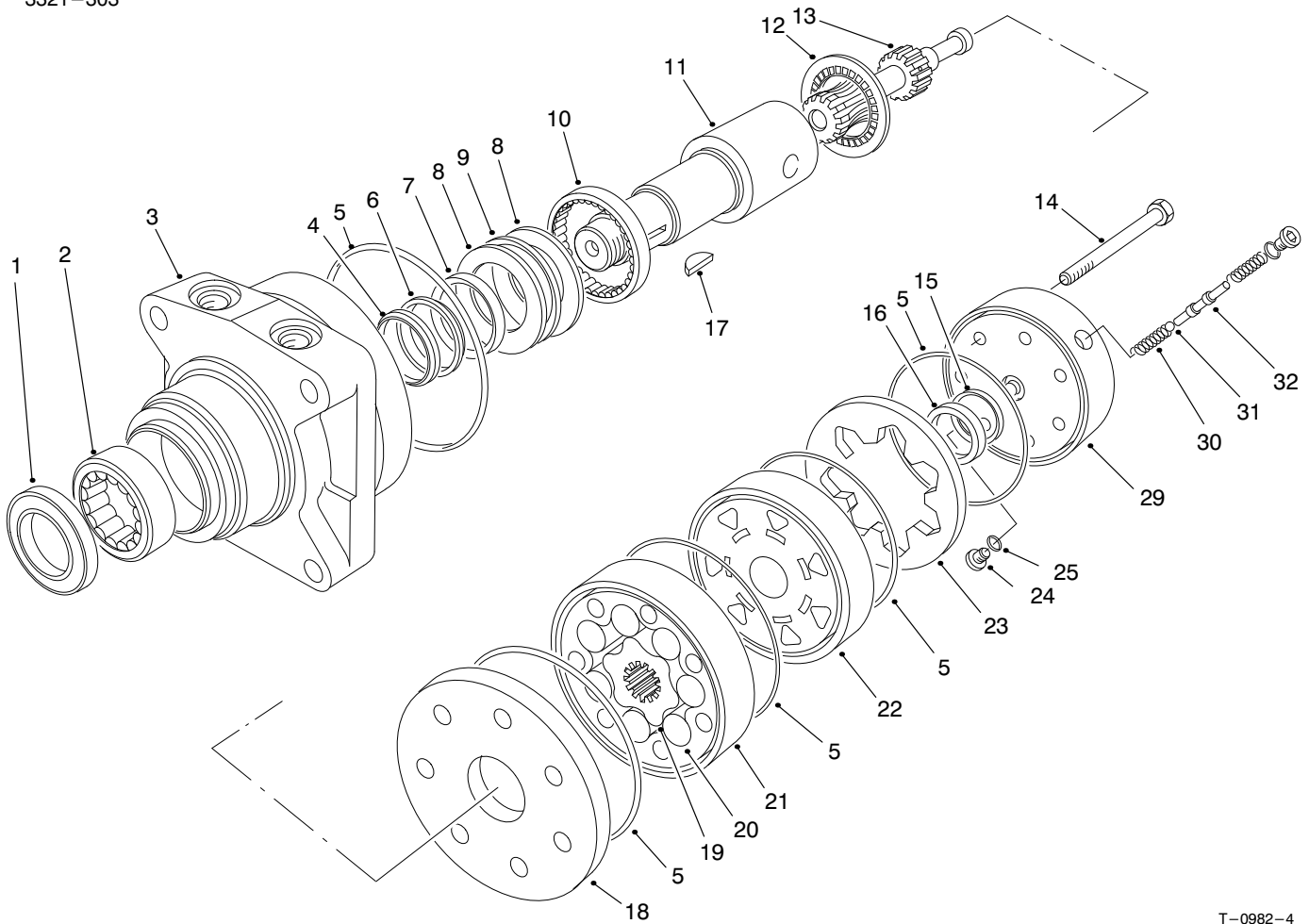
†Not Serviceable Separately



T-2600-3

REAR WHEEL DRIVE ASSEMBLY

Ref. No.	Part No.	Description	No. Used	Ref. No.	Part No.	Description	No. Used
1	95-0564	Tube - Front, RH Rear Motor	1	20	3256-26	Washer - Flat	4
2	95-0559	Tube - Rear, RH Rear Motor	1	21	69-8930	Washer	4
3	32144-14	Screw - HWHTF	2	22	69-8960	Spacer	2
4	22-4670	Hose - Hydraulic	2	23	240-5	Grommet - Rubber	2
5	354-132	Fitting - Hydraulic 90° (Incl. Ref. #36)	1	24	95-0642	Locknut - Bulkhead	2
6	3272-23	Pin - Cotter	4	25	95-0577	Fitting - Bulkhead, Tee	2
7	83-7000	Cylinder - Hydraulic	1	26	95-0568	Bracket - Bulkhead	1
8	18-7310	Pin - Cylinder, Rake	1	27	95-0562	Tube - Front, Motor RH	1
9	95-0560	Tube - Front, LH Rear Motor	1	28	95-0563	Tube - Front, Motor LH	1
10	95-0567	Tube - Rear, LH Rear Motor	1	29	321-18	Screw - HH	1
11	353-426	Fitting - Hydraulic 90° (Incl. Ref. #37)	4	30	51-0600	Hose - Hydraulic	2
12	75-9831	Hydraulic Motor - Wheel	1	31	56-7976	Clamp - Tube	2
13	18-7160	Pin - Cylinder	1	32	69-9760	Plate - Cover	1
14	353-431	Fitting - Hydraulic 45° (Incl. Ref. #36)	1	33	3296-8	Nut - Lock	1
15	353-212	Fitting - Hydraulic 45° (Incl. Ref. #39)	1	34	3256-78	Washer - Flat	1
16	75-9840	Hydraulic Motor - Wheel	1	35	95-0595	Hose - Hydraulic	2
17	95-0575	Tube - Shuttle Valve	1	36	237-78	O-Ring	2
19	325-5	Screw - HH	4	38	3257-42	Key - Woodruff	2
				37	237-79	O-Ring	4
				39	237-42	O-Ring	1
				40	52-2480	Spacer	1
				41	38-3400	Snubber - Rubber	2



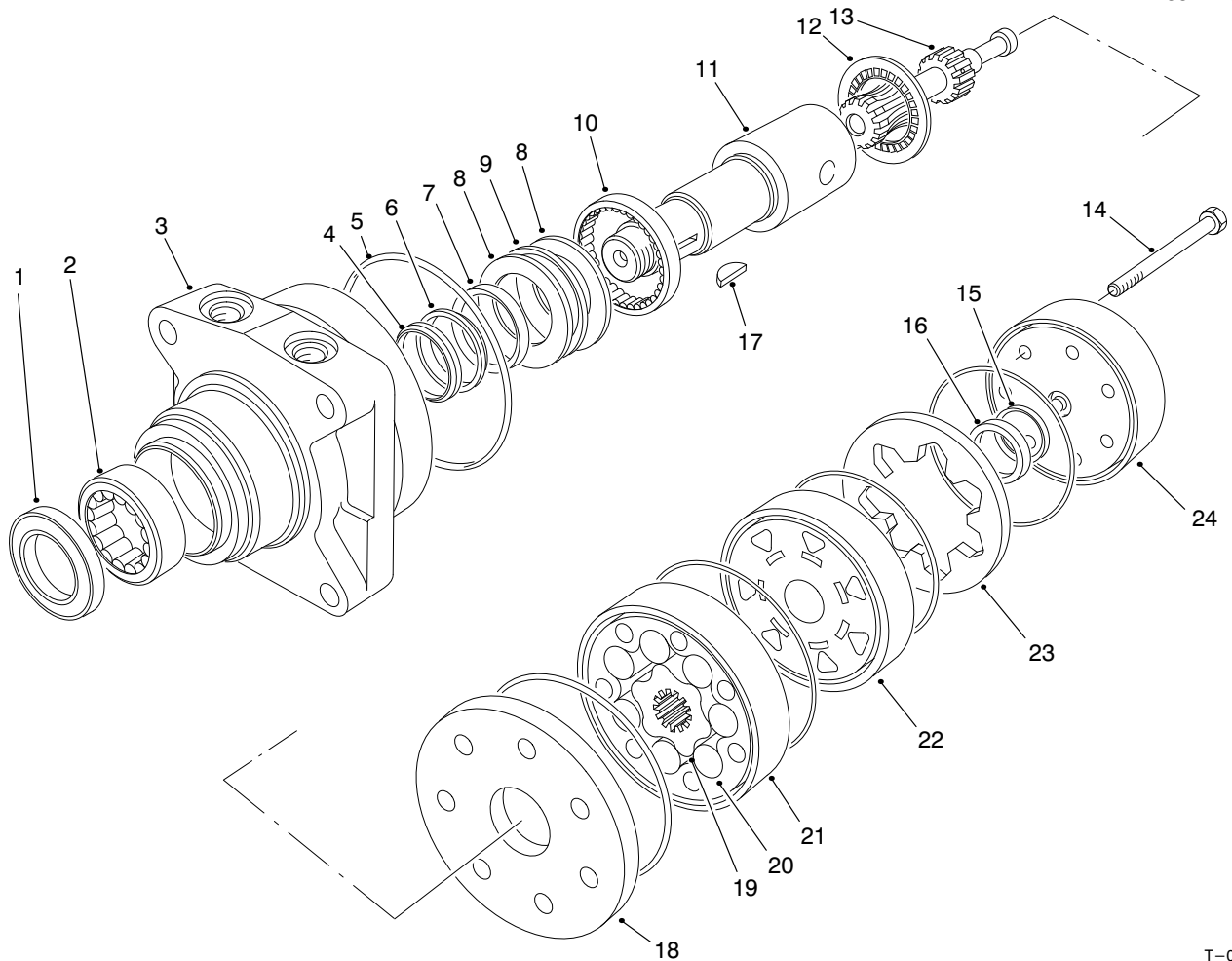
T-0982-4

HYDRAULIC DRIVE MOTOR RIGHT REAR NO. 75-9840

Ref. No.	Part No.	Description	No. Used
1		Seal - Dirt & Water	1
2		Bearing	1
3		Housing	1
4		Washer - Backup	1
5		Seal - Rings	5
6		Washer - Backup	1
7		Seal - Inner	1
8		Washer - Thrust	2
9		Bearing - Thrust	1
10		Bearing	1
11	76-0860	Shaft - Coupling	1
12	76-0850	Bearing - Thrust	1
13	76-0820	Link - Drive	1
14	76-1040	Screw - HH	7
15		Seal - Commutator	1
16		Commutator	1
17	3257-42	Key - Woodruff	1
18	76-0870	Plate - Wear	1
19		Rotor	1
20		Vane	7

Ref. No.	Part No.	Description	No. Used
21		Stator	1
22	76-0840	Manifold	1
23		Ring - Commutator	1
24	353-990	Plug (Incl. Ref. #25)	2
25	237-78	O-Ring	2
29	76-0890	Asm-Cover, End (Incl. Ref. #24-25 & 30-32)	1
30		Spring	2
31		Ball	1
32		Valve - Shuttle	1
*	76-0830	Rotor Set (Incl. Ref. #19-21)	1
*	76-0880	Asm-Commutator (Incl. Ref. #15, 16 & 23)	1
*	94-8178	Kit-Seal (Incl. Ref. #1, 4-7 & 15)	1
*	76-0810	Asm-Housing (Incl. Ref. #2, 3 & 8-10)	1

*Not Illustrated



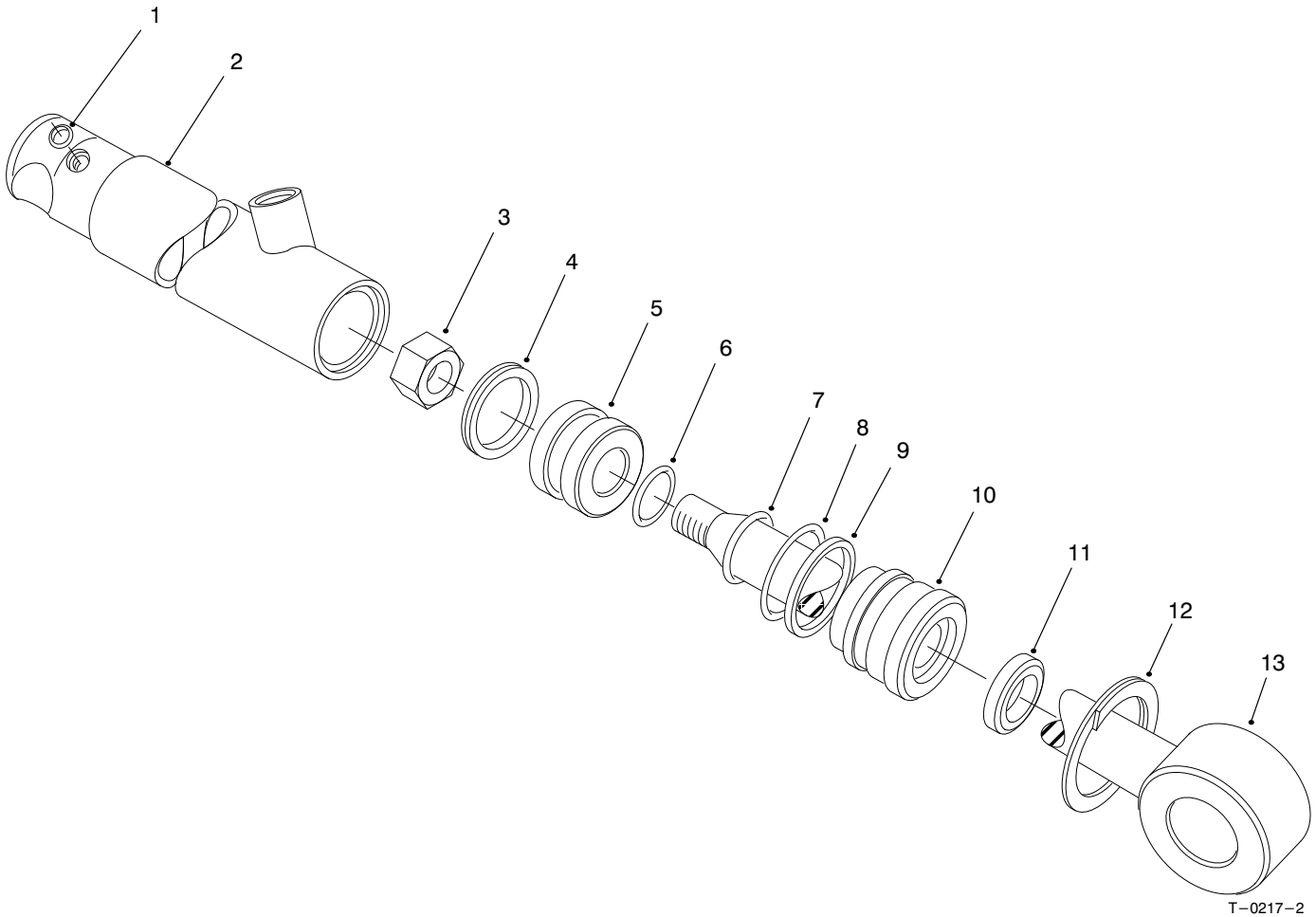
T-0983-3

HYDRAULIC DRIVE MOTOR LEFT REAR NO. 75-9831

Ref. No.	Part No.	Description	No. Used	Ref. No.	Part No.	Description	No. Used
1		Seal - Dirt & Water	1	17	3257-42	Key - Woodruff	1
2		Bearing	1	18	76-0870	Plate - Wear	1
3		Housing	1	19		Rotor	1
4		Washer - Backup	1	20		Vane	7
5		Seal - Rings	5	21		Stator	1
6		Washer - Backup	1	22	76-0840	Manifold	1
7		Seal - Inner	1	23		Ring - Commutator	1
8		Washer - Thrust	2	24	76-0940	Asm - Cover, End	1
9		Bearing - Thrust	1	*	76-0830	Rotor Set (Incl. Ref. #19-21)	1
10		Bearing	1	*	76-0880	Asm - Commutator (Incl. Ref. #15, 16 & 23)	1
11	76-0860	Shaft - Coupling	1	*	94-8178	Kit - Seal (Incl. Ref. #1, 4-7 & 15)	1
12	76-0850	Bearing - Thrust	1	*	76-0810	Asm - Housing (Incl. Ref. #2, 3 & 8-10)	1
13	76-0820	Link - Drive	7				
14	76-1020	Screw - HH	1				
15		Seal - Commutator	1				
16		Commutator	1				

*Not Illustrated

3321-303



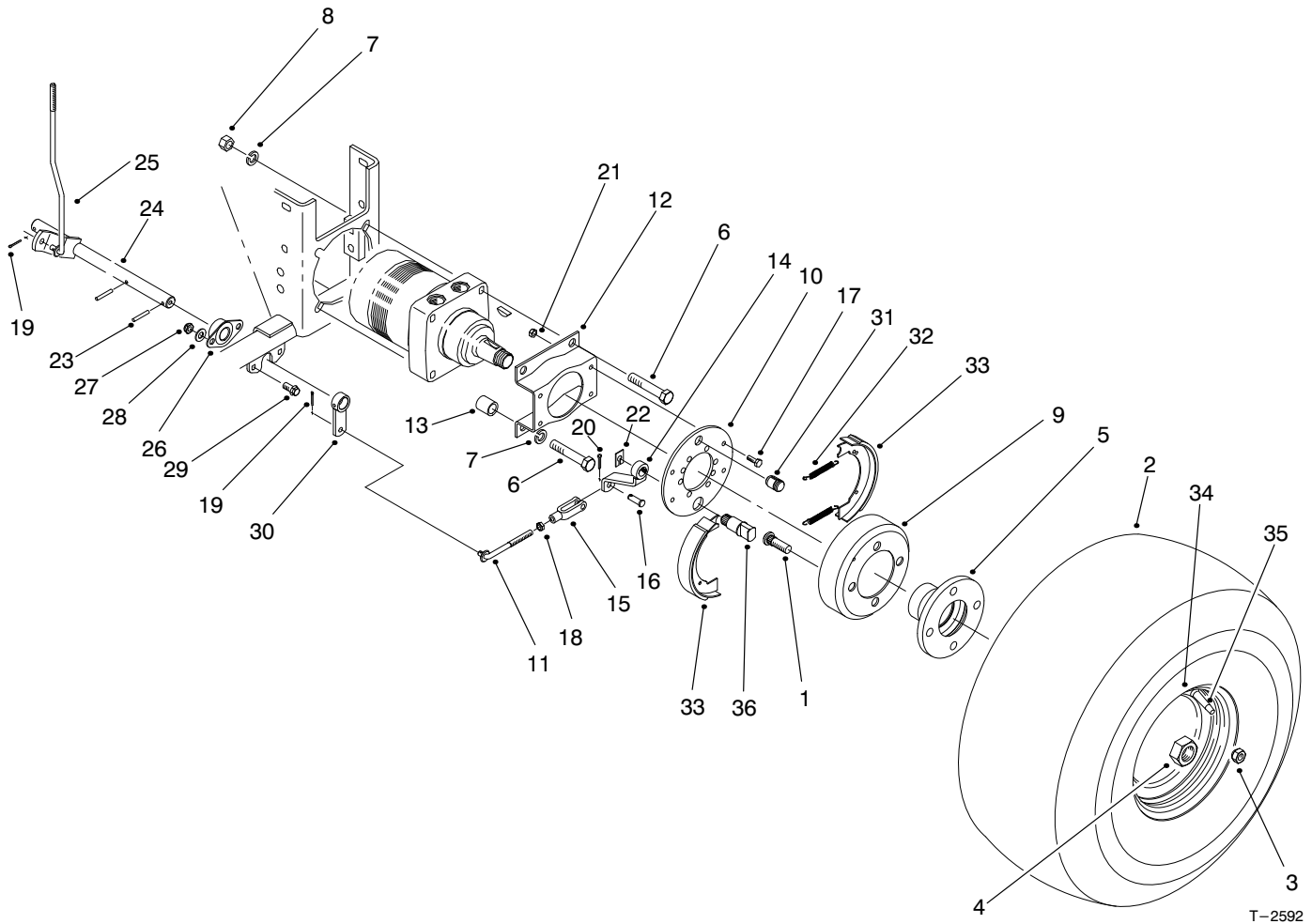
T-0217-2

HYDRAULIC CYLINDER ASSEMBLY NO. 83-7000

Ref. No.	Part No.	Description	No. Used
1	237-78	O-Ring	2
2	43-5260	Barrel - w/Clevis & Ports	1
3	32152-10	Nut	1
4		Uniring	1
5	70-2780	Piston	1
6		O-Ring	1
7		Poly-Pack	1
8		O-Ring	1

Ref. No.	Part No.	Description	No. Used
9		Back-Up	1
10	70-2770	Head	1
11		Seal - Dust	1
12	43-5220	Ring - Retaining	1
13	43-5230	Shaft with Clevis	1
*	83-7250	Kit - Seal Repair (Incl. Ref. #4, 6-9 & 11)	1

*Not Illustrated



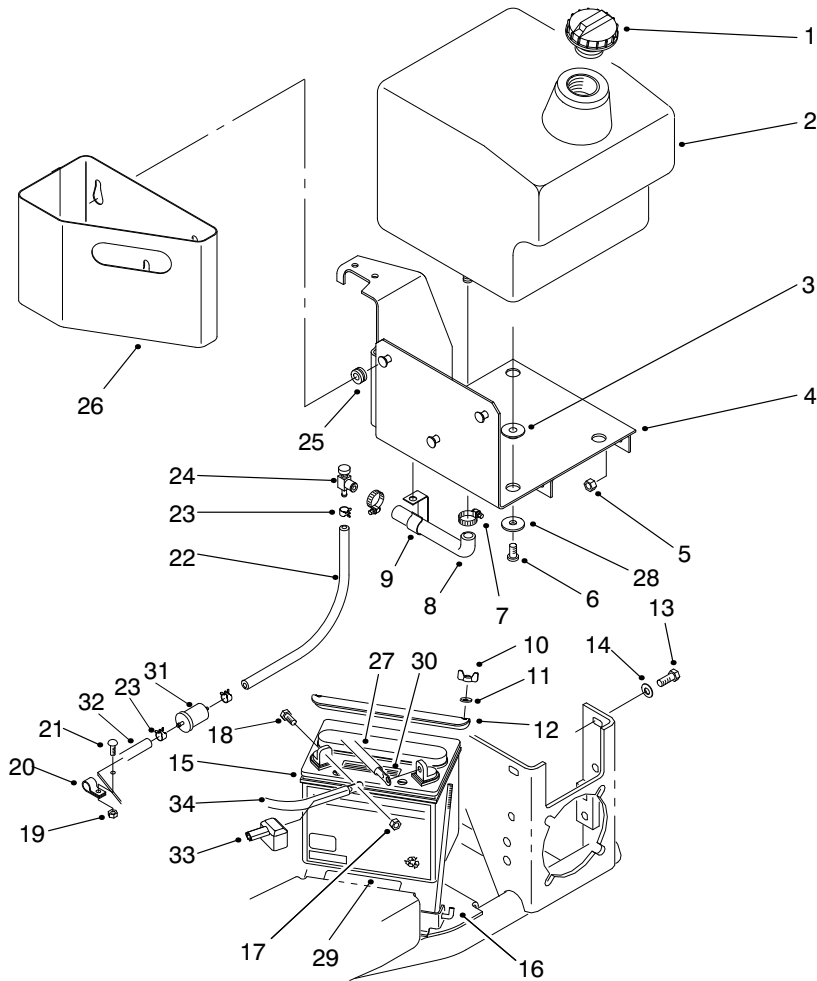
REAR WHEEL BRAKE ASSEMBLY

T-2592

Ref. No.	Part No.	Description	No. Used
1	85-6540	Stud - Drive Type	8
2	85-8290	Tire	2
3	242-50	Nut - Lug	8
4	26-3790	Nut - Lock	2
5	93-6838	Hub - Wheel	2
6	325-14	Screw - HH	8
7	3253-7	Washer - Lock	8
8	3217-9	Nut - Hex.	4
9	10-6850	Drum - Brake	2
10	70-9870	Plate - Backing	2
11	84-1990	Rod - Adjusting	2
12	84-2000	Bracket - Brake	2
13	92-1715	Spacer	8
14	93-6850	Lever - Brake	2
15	282-2	Clevis	2
16	283-1	Pin - Clevis	2
17	321-4	Screw - HH	8
18	3220-2	Nut - Hex. Jam	2
19	3272-6	Pin - Cotter	3
20	3272-10	Pin - Cotter	2

Ref. No.	Part No.	Description	No. Used
21	3296-42	Nut - Lock	8
22	32120-47	Ring - Retaining	2
23	32121-6	Pin - Roll	3
24	95-0625	Rod - Traverse	1
25	95-0628	Rod - Brake	1
26	27-2320	Bearing - Side Flange	2
27	3296-59	Nut - Lock	4
28	3256-24	Washer - Flat	4
29	3234-1	Screw - HHF	4
30	83-9310	Arm - Brake, RH	2
31	70-9850	Clip - Retaining	2
32	70-9880	Spring - Return	4
33	70-9840	Lining - Shoe	4
34	94-6116	Rim	2
35	232-35	Stem - Valve	2
36	70-9860	Shaft - Cam	2
*	71-1500	Asm-Brake (Incl. Ref. #31-33, & 36-37)	2

*Not Illustrated

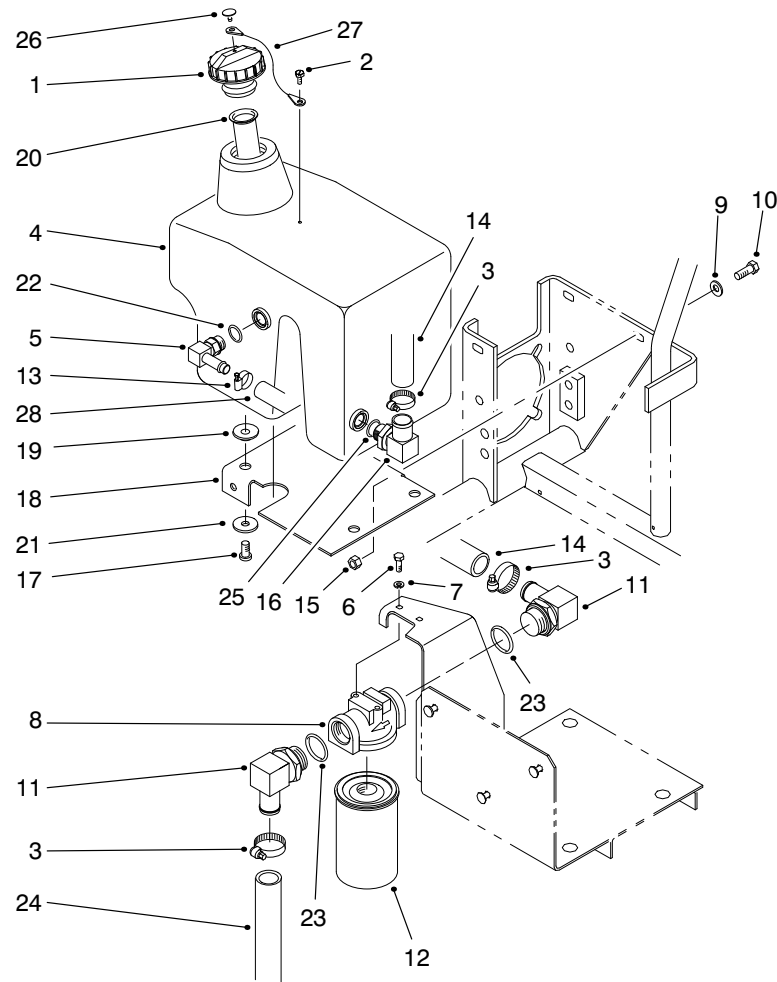


T-2587

FUEL TANK ASSEMBLY

Ref. No.	Part No.	Description	No. Used
1	93-7170	Cap - Fuel	1
2	92-7186	Tank - Fuel	1
3	240-11	Grommet	4
4	95-0576	Base - Fuel Tank	1
5	3296-39	Nut - Lock	3
6	3250-36	Screw - PPH	4
7	2412-36	Clamp - Hose	2
8	92-7152	Hose - Fuel	1
9	92-7160	Clip - Fuel Hose	1
10	32103-12	Nut - Wing	2
11	3256-22	Washer - Flat	2
12	92-5018	Clamp - Battery	1
13	323-6	Screw - HH	3
14	3256-24	Washer - Flat	3
15	92-1678	Battery	1
16	56-7720	Bolt - Battery	2
17	3296-29	Nut - Lock	2
18	322-3	Screw - HH	2

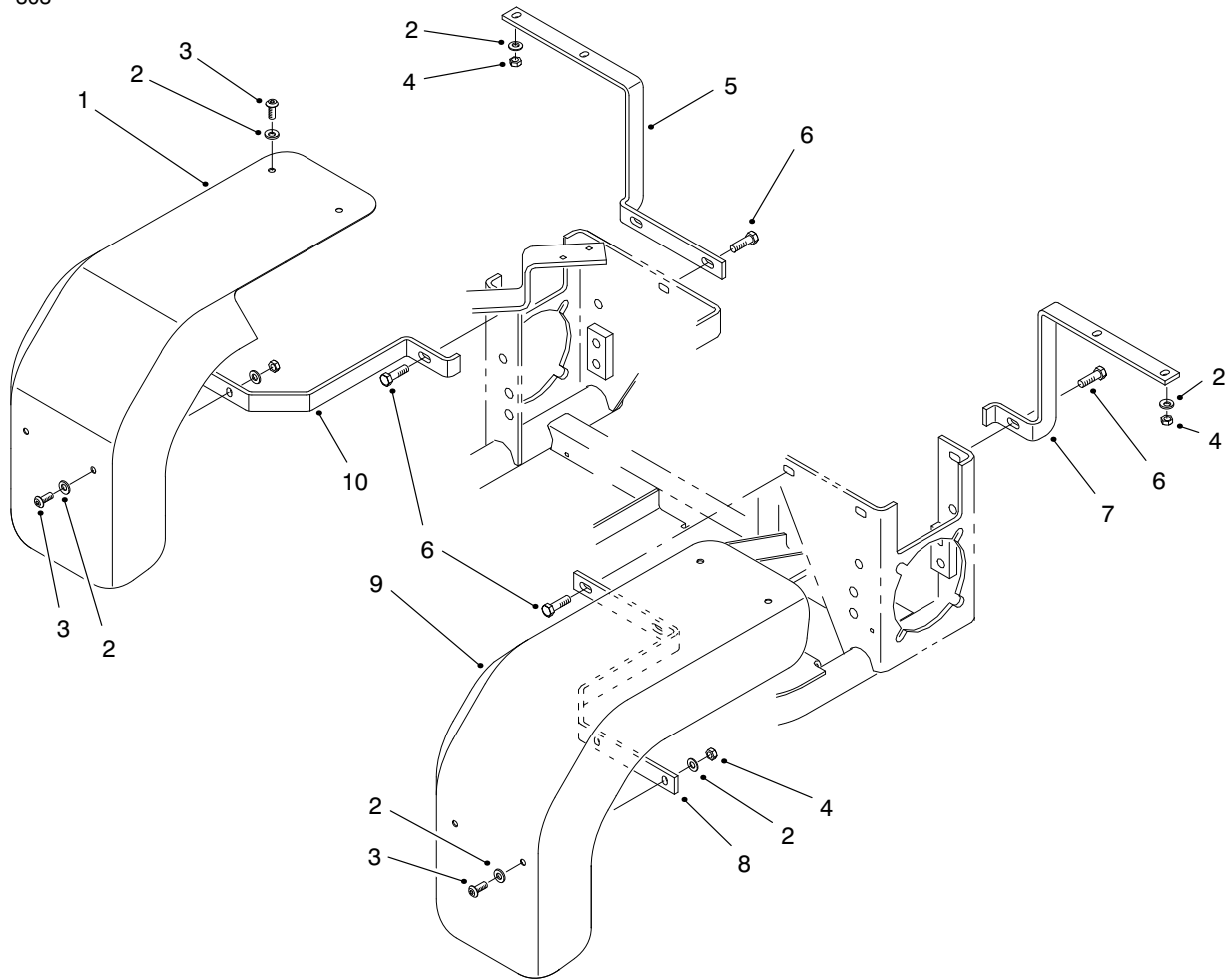
Ref. No.	Part No.	Description	No. Used
19	3296-42	Nut - Lock	1
20	2412-73	Clamp - R	1
21	3274-69	Screw - HSBH	1
22	95-0618	Hose - Fuel	1
23	2412-98	Clamp - Hose	4
24	83-1390	Fitting - Fuel Shut-Off	1
25	240-9	Grommet	3
26	86-7640	Box - Litter	1
27	86-7450	Wire - Battery-Ground	1
28	3256-4	Washer - Flat	4
29	93-6668	Decal - Battery	1
30	93-7276	Decal - Danger	1
31	94-2690	Filter - Fuel	1
32	95-0619	Hose - Gas Line	1
33	28-8080	Boot - Terminal	1
34	86-7570	Wire - Battery, Solenoid	1
*	95-0599	Asm-Wire (Incl. Ref. #33 & 34)	1



T-2591-3

HYDRAULIC OIL RESERVOIR & FILTER ASSEMBLY

Ref. No.	Part No.	Description	No. Used	Ref. No.	Part No.	Description	No. Used
1	93-4365	Asm - Oil Cap (Incl. Ref. #26 & 27)	1	14	98-8152	Hose - Hydraulic	1
2	57-5420	Screw - Shoulder	1	15	3296-39	Nut - Lock	3
3	2412-129	Clamp - Worm	4	16	95-0629	Fitting - Hydraulic 90° (Incl. Ref. #25)	1
4	98-0968	Tank - Hydraulic	1	17	3250-36	Screw - PPH	3
5	354-120	Fitting - Hydraulic 45° (Incl. Ref. #22)	1	18	95-0590	Base - Hydraulic Tank	1
6	321-3	Screw - HH	2	19	240-11	Grommet	4
7	3253-3	Washer - Lock	2	20	92-1705	Screen - Filter	1
8	68-8990	Asm - Head, Filter	1	21	3256-4	Washer - Flat	3
9	3256-24	Washer - Flat	3	22	237-79	O-Ring	1
10	323-6	Screw - HH	3	23	237-81	O-Ring	2
11	353-987	Fitting - Hydraulic 90° (Incl. Ref. #23)	2	24	95-0555	Hose - Hydraulic	1
12	23-9740	Filter - Oil	1	25	237-117	O-Ring	1
13	2412-36	Clamp	1	26	2410-73	Retainer - Tether	1
				27	75-0540	Tether - Oil Cap	1
				28	98-8153	Hose - Return	1

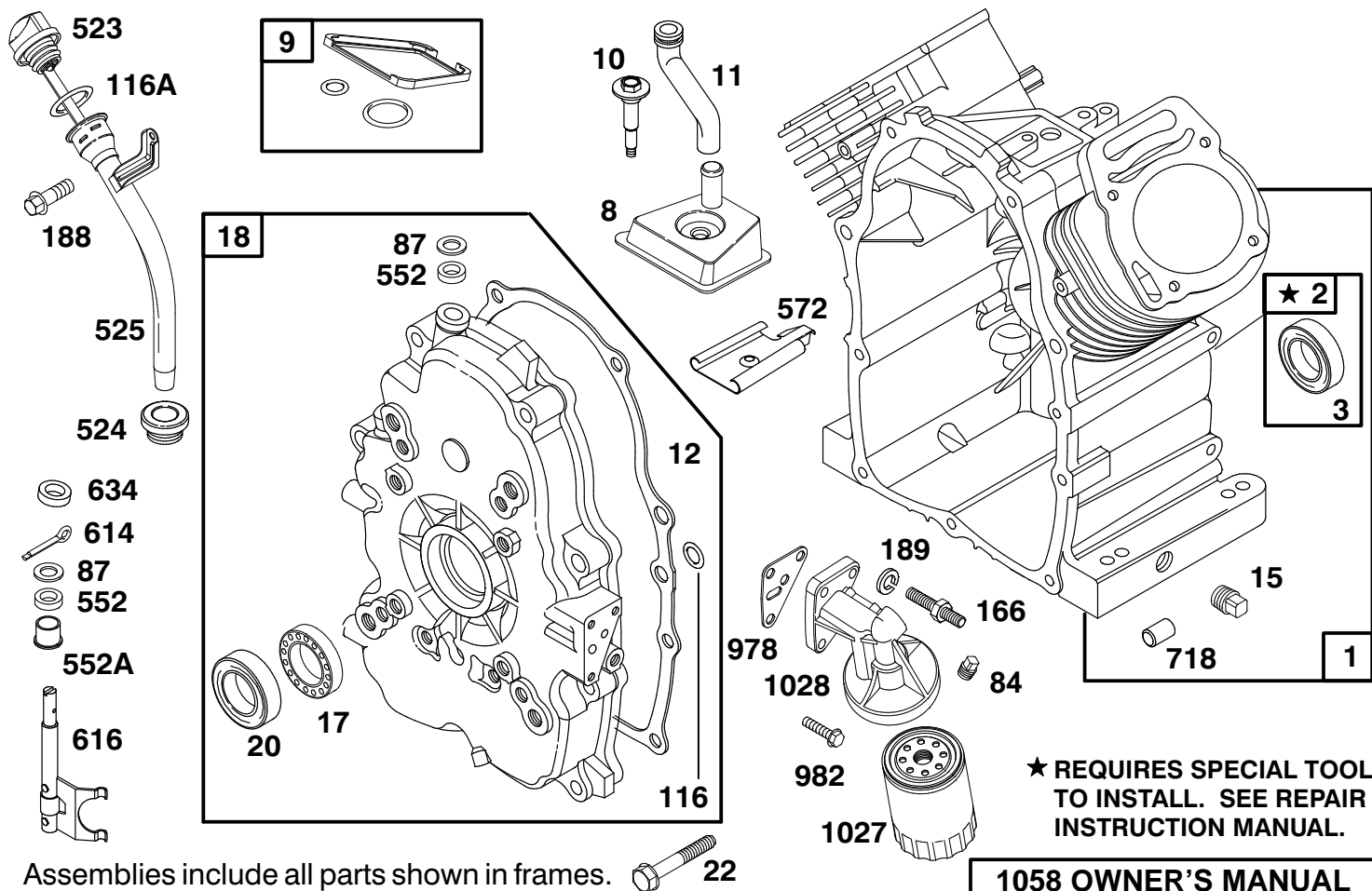


T-2172

FENDER ASSEMBLY – EUROPE

Ref. No.	Part No.	Description	No. Used
1	94-1884	Fender – Rear, RH	1
2	3256-70	Washer – Flat	16
3	3274-55	Screw – HSBH	8
4	3296-29	Nut – Lock	8
5	94-1888	Bracket – Support, Fender	1

Ref. No.	Part No.	Description	No. Used
6	323-7	Screw – HH	6
7	94-1886	Bracket – Support, Fender	1
8	94-1885	Bracket – Support, Fender	1
9	94-1883	Fender – Rear, LH	1
10	94-1887	Bracket – Support, Fender	1

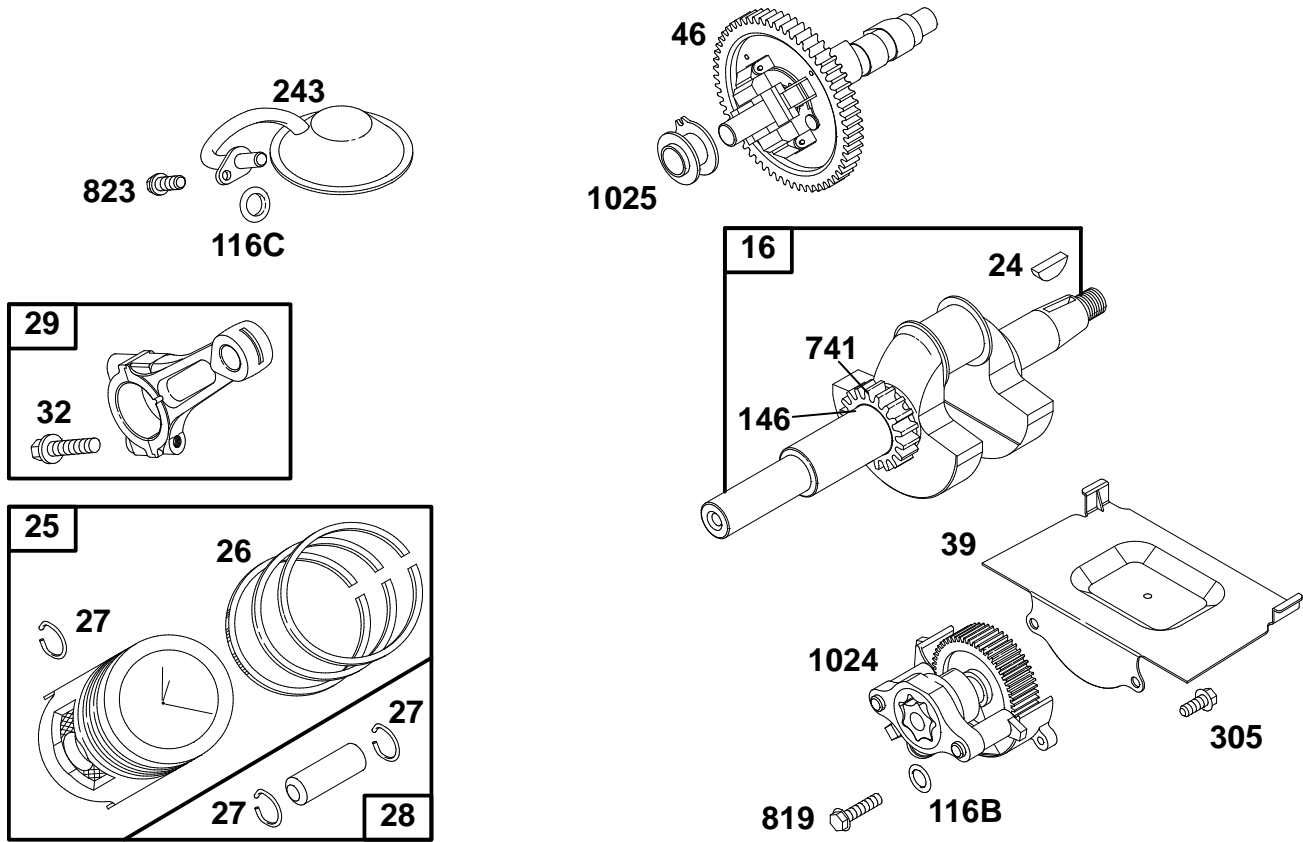


ENGINE BRIGGS & STRATTON MODEL 303447-1180-E1

Ref. No.	Part No.	Description	No. Used
1	808440	Cylinder Assembly	1
2	808534	Bearing - Cylinder	1
*3	805101	Seal - Oil	1
8	807795	Breather Assembly	1
*9	807688	Gasket - Breather	1
10	805751	Screw - Hex. Washer Head	1
11	806083	Tube - Breather	1
12	806190	Gasket - Crankcase Cover	1
15	805048	Plug - Oil Drain	1
17	805754	Bearing - Ball	1
18	808502	Cover - Crankcase	1
*20	805049	Seal - Oil	1
22	805696	Screw - Crankcase Cover	1
84	91488	Plug - Pipe	1
*87	805054	Seal - Governor Shaft	1
116	806191	O-Ring (Crankcase Cover)	1
*116A	805386	O-Ring (Dipstick)	1
166	805073	Stud - Oil Filter Adapter	1

Ref. No.	Part No.	Description	No. Used
188	805247	Screw - Hex.	1
189	805449	Lockwasher	1
523	807977	Dipstick	1
*524	281370	Seal - Fill Tube	1
525	807584	Tube - Oil Fill	1
552	805412	Bushing - Governor Shaft	1
552A	805413	Bushing - Governor Shaft	1
572	805197	Baffle - Breather	1
614	806096	Pin - Cotter	1
616	807596	Fork - Governor	1
634	805416	Washer - Governor Shaft	1
718	805103	Dowel - Crankcase	1
*978	805250	Gasket - Oil Filter Adapter	1
982	805030	Screw - Hex.	1
1027	492932	Filter - Oil	1
1028	808325	Adapter - Oil Filter	1
1058	273685	Owner's Manual	1

*Included in Gasket Set - Part No. 808390.



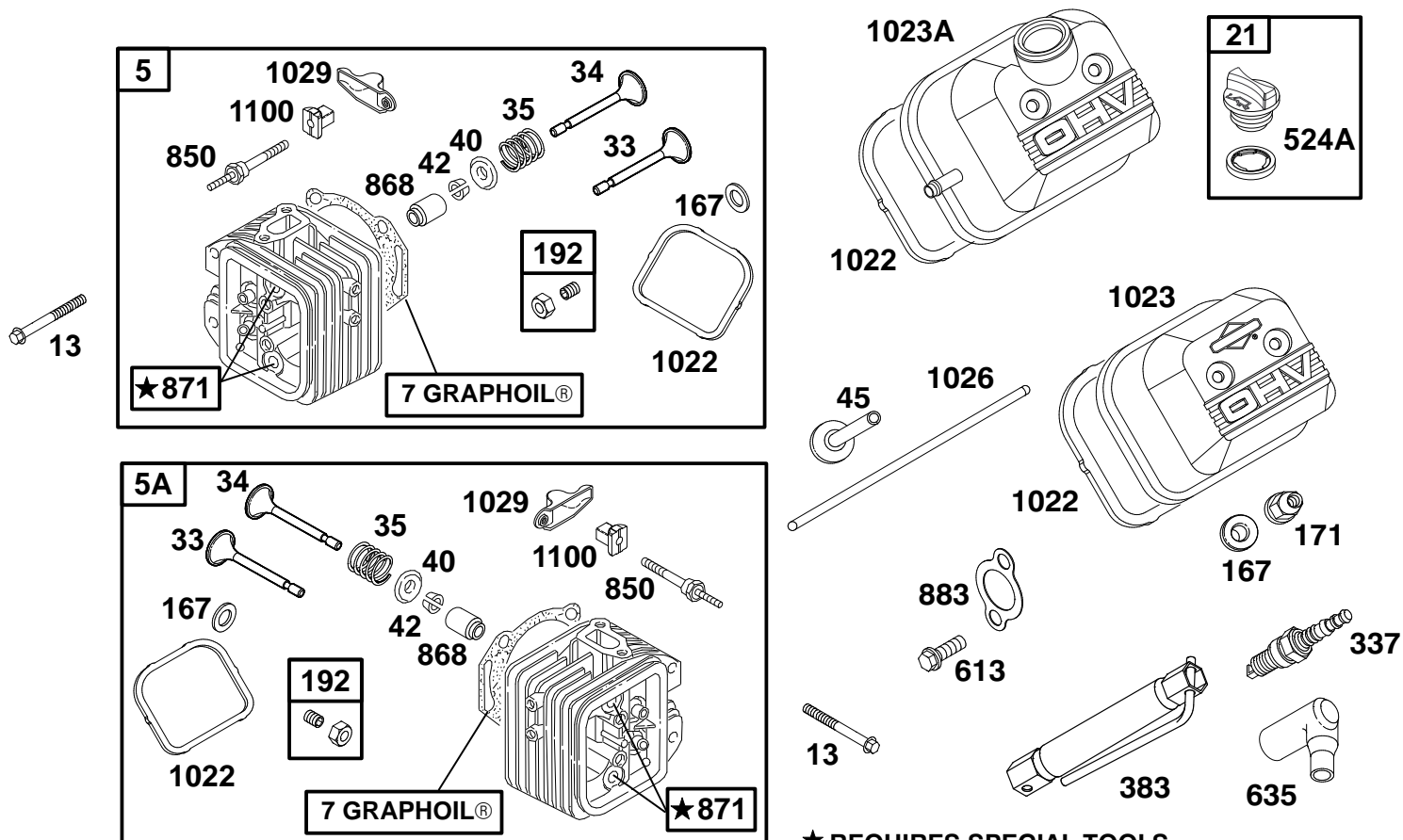
Assemblies include all parts shown in frames.

ENGINE BRIGGS & STRATTON MODEL 303447-1180-E1

Ref. No.	Part No.	Description	No. Used
16	808425	Crankshaft	1
24	806066	Key - Flywheel	1
25	807619	Piston Assembly (Standard)	1
	807807	Piston Assembly (.010 O.S.)	1
	807809	Piston Assembly (.020 O.S.)	1
	807811	Piston Assembly (.030 O.S.)	1
26	807620	Ring Set - Piston (Standard)	1
	807808	Ring Set - Piston (.010 O.S.)	1
	807810	Ring Set - Piston (.020 O.S.)	1
	807812	Ring Set - Piston (.030 O.S.)	1
27	805099	Lock - Piston Pin	1
28	807621	Piston Pin Assembly	1
29	807900	Rod - Connecting (Standard)	1
	807809	Rod - Connecting (.020 U.S.)	1

Ref. No.	Part No.	Description	No. Used
32	805395	Screw - Connecting Rod	1
39	805654	Deflector - Oil	1
46	807542	Gear - Cam	1
*116B	805058	O-Ring (Oil Pump)	1
*116C	805316	O-Ring (Pick - Up Tube)	1
146	94196	Key - Timing	1
243	807598	Screen - Oil Pump	1
305	805406	Screw - Hex.	1
741	805984	Gear - Timing	1
819	805057	Screw - Hex.	1
823	805317	Screw - Hex.	1
1024	807644	Oil Pump Assembly	1
1025	805313	Slider - Governor	1

*Included in Gasket Set - Part No. 808390.



★ REQUIRES SPECIAL TOOLS
TO INSTALL. SEE REPAIR
INSTRUCTION MANUAL.

Assemblies include all parts shown in frames.

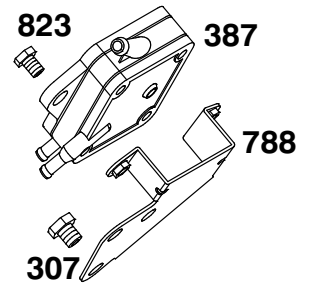
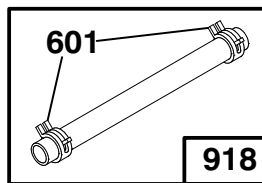
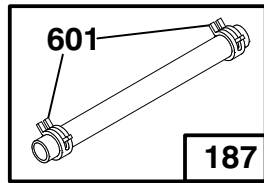
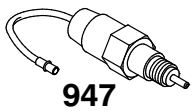
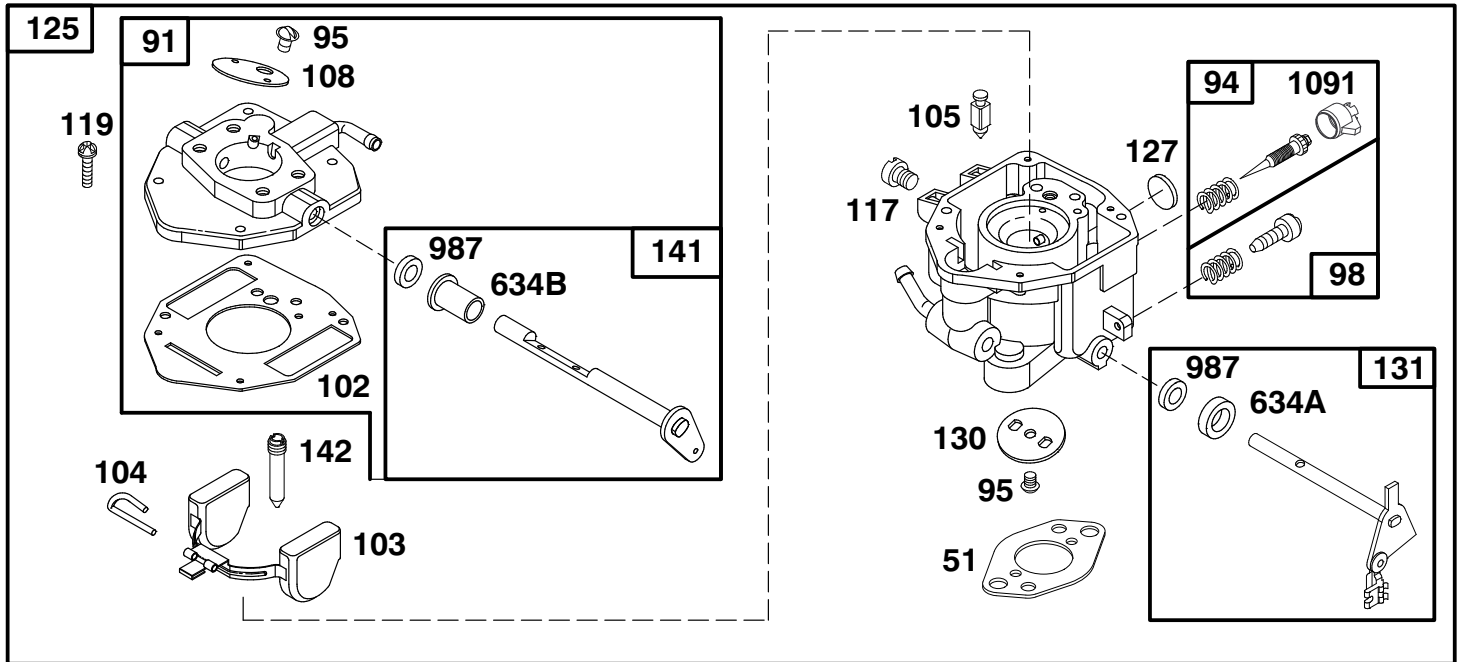
ENGINE BRIGGS & STRATTON MODEL 303447-1180-E1

Ref. No.	Part No.	Description	No. Used
5	808381	Head – Cylinder (Cyl. #1)	1
5A	808382	Head – Cylinder (Cyl. #2)	1
*‡7	806085	Gasket – Cylinder Head	1
13	805097	Screw – Cylinder Head	1
21	491832	Dipstick/Fill Plug	1
33	807681	Valve – Exhaust	1
34	807680	Valve – Intake	1
35	805937	Spring – Valve	1
40	805092	Retainer – Valve Spring	1
42	807683	Retainer – Valve	1
45	262679	Tappet – Valve	1
*‡167	805420	Washer – Valve Cover	1
‡171	805019	Nut – Nylock	1
192	807623	Screw – Valve Adjustment	1
337	496018	Plug – Spark	1
383	19374	Wrench – Spark Plug	1

Ref. No.	Part No.	Description	No. Used
*‡524A	271983	Seal – Filler Plug	1
613	805158	Screw – Hex.	1
635	805529	Elbow – Spark Plug	1
850	806037	Stud – Rocker Arm	1
868	805094	Seal – Valve Guide	1
871	805084	Guide – Valve	1
*‡883	805024	Gasket – Exhaust	1
*‡1022	806039	Gasket – Valve Cover	1
1023	805100	Cover – Valve	1
1023A	808032	Cover – Valve	1
1026	805352	Rod – Push (Intake Valve)	1
		Note: 805617 Rod – Push (Exhaust Valve)	1
1029	806036	Arm – Rocker	1
1100	806038	Pivot – Rocker Arm	1

*Included in Gasket Set – Part No. 808390.

‡Included in Valve Overhaul Kit – Part No. 808392.



Assemblies include all parts shown in frames.

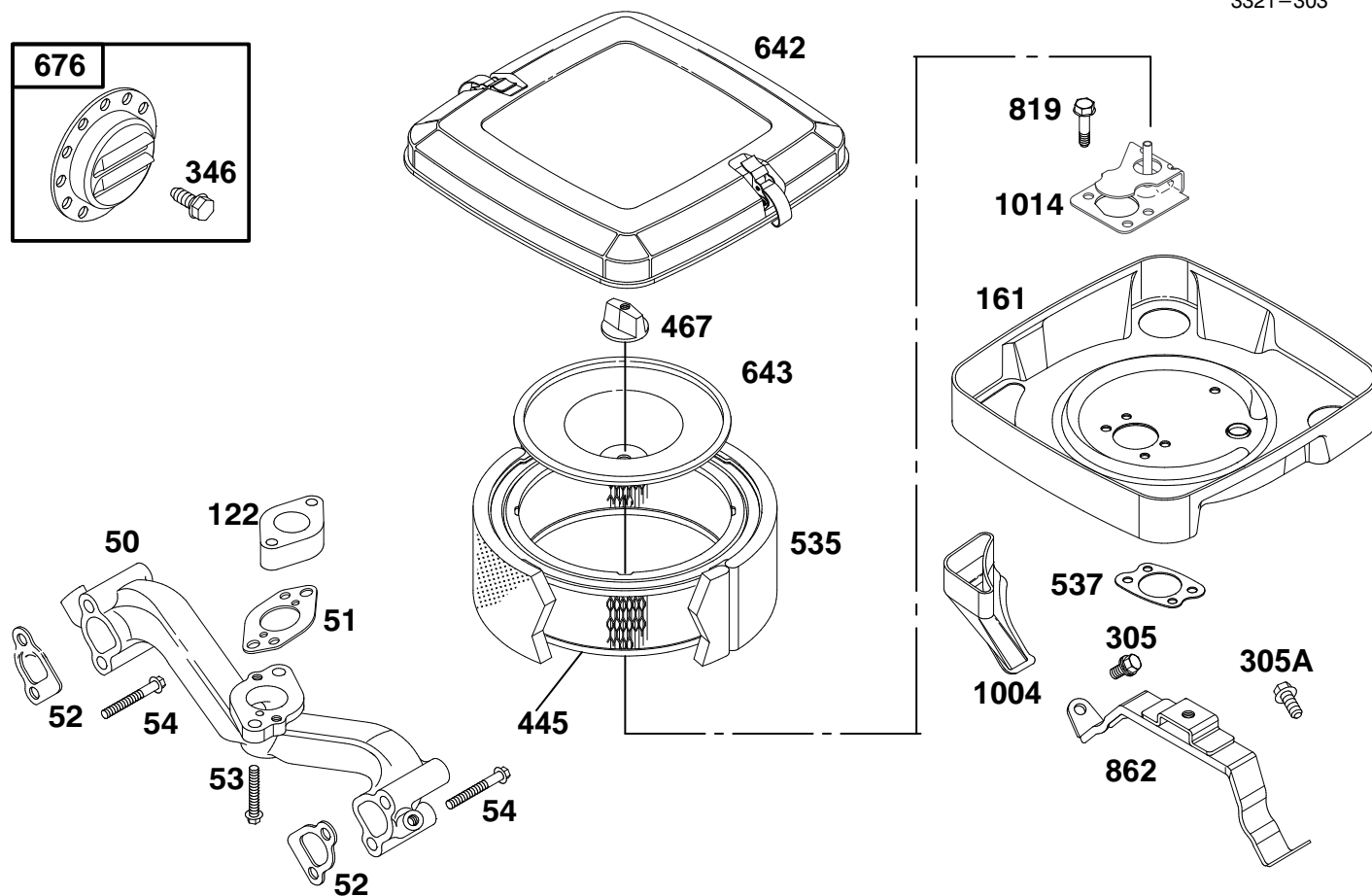
ENGINE BRIGGS & STRATTON MODEL 303447-1180-E1

Ref. No.	Part No.	Description	No. Used
*51	805700	Gasket - Carburetor Mtg.	1
91	807919	Body - Upper Carburetor	1
†94	808257	Valve - Idle Adjust	1
95	805538	Screw - Valve Mtg.	1
98	808177	Screw - Throttle Adj.	1
†102	805541	Gasket - Carburetor Body	1
103	805546	Float Assembly	1
†104	805545	Pin - Float Hinge	1
†105	805547	Valve - Fuel Inlet	1
108	805539	Valve - Choke	1
117	805852	Jet - Main	1
	805537	Jet - Main (High Altitude)	1
119	805540	Screw - Upper Body Mtg.	1
125	808251	Carburetor Assembly	1
†127	805559	Plug - Welch	1
130	805554	Valve - Throttle	1
131	807720	Shaft - Throttle	1

Ref. No.	Part No.	Description	No. Used
141	807722	Shaft - Choke	1
†142	805553	Nozzle - Carburetor	1
187	296004	Line - Fuel (Cut to Required Length)	1
307	805025	Screw - Hex.	1
387	491922	Pump - Fuel	1
601	93053	Clamp - Hose	1
†634A	805557	Collar - Throttle	1
†634B	805543	Collar - Choke	1
788	807685	Bracket - Fuel Pump	1
823	805317	Screw - Mounting	1
918	393815	Line - Vacuum (Cut to Required Length)	1
947	807664	Solenoid	1
†987	805544	Seal - Shaft	1
†1091	805862	Cap - Limiter	1

*Included in Gasket Set - Part No. 808390.

†Included in Carburetor Kit - Part No. 808273.

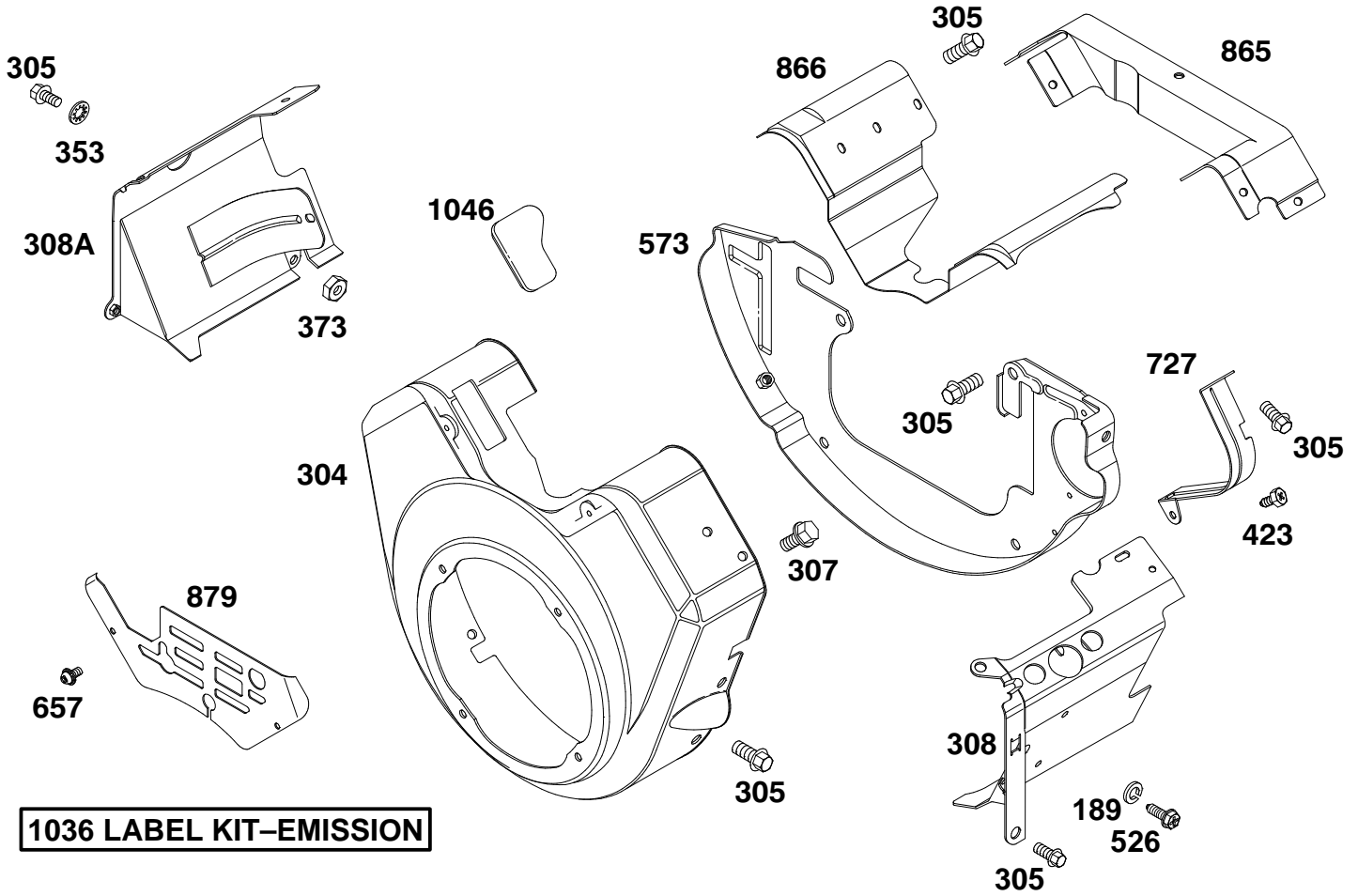


ENGINE BRIGGS & STRATTON MODEL 303447-1180-E1

Ref. No.	Part No.	Description	No. Used	Ref. No.	Part No.	Description	No. Used
50	805772	Manifold – Intake	1	445	394018	Filter – Air	1
*51	805700	Gasket – Carburetor Mtg.	1	467	491875	Knob – Air Cleaner	1
*‡52	805023	Gasket – Intake Manifold	1	535	272490	Filter – Air	1
53	805466	Screw – Hex.	1	*537	805655	Gasket – Air Cleaner	1
54	805006	Screw – Hex.	1	642	807862	Cover – Air Cleaner	1
122	805328	Spacer – Carburetor	1	643	805631	Plate – Air Cleaner	1
161	807857	Base – Air Cleaner	1	676	397630	Deflector – Muffler	1
305	805406	Screw – Hex. (M6 x 12 mm)	1	819	805317	Screw – Hex.	1
305A	805902	Screw – Hex. (M6 x 16 mm)	1	862	807796	Bracket – Air Cleaner	1
346	94896	Screw – Hex.	1	1004	805632	Strap – Cleaner Mounting	1
				1014	808311	Shield – Carburetor	1

*Included in Gasket Set – Part No. 808390.

‡Included in Valve Overhaul Kit – Part No. 808392.

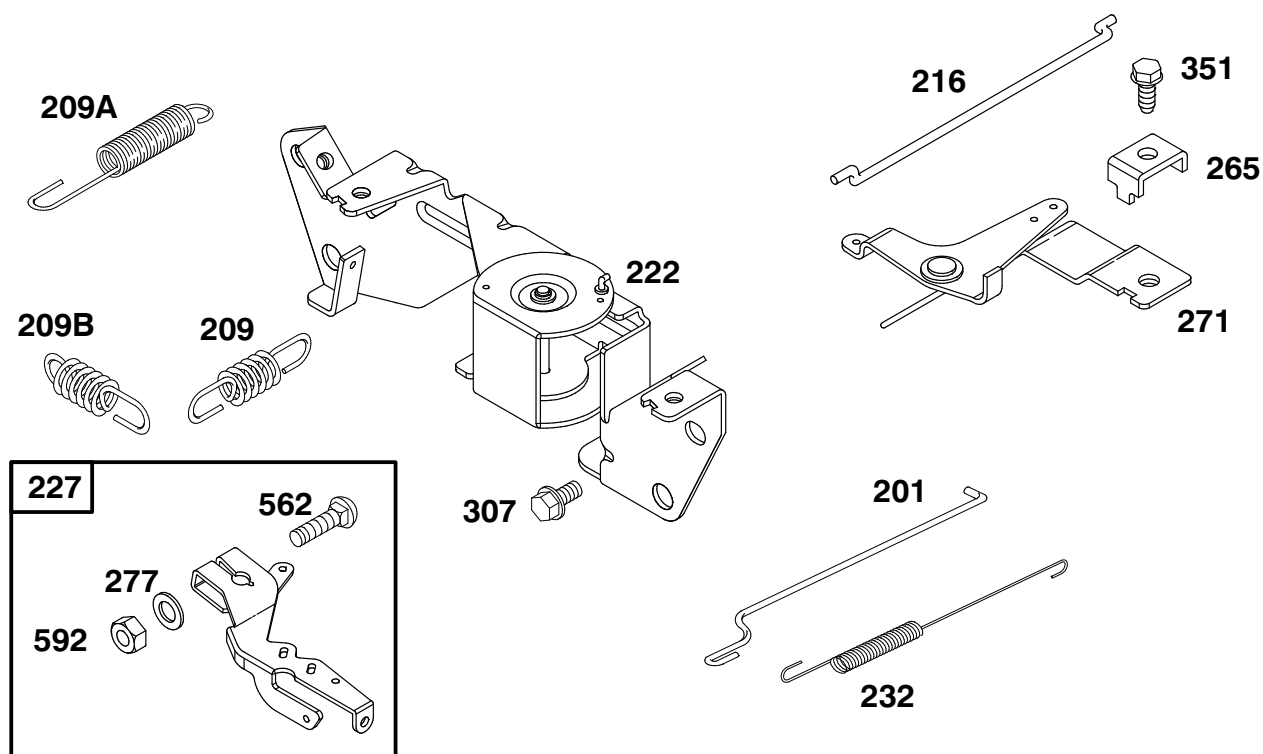


1036 LABEL KIT-EMISSION

ENGINE BRIGGS & STRATTON MODEL 303447-1180-E1

Ref. No.	Part No.	Description	No. Used
189	805449	Washer - Lock	1
304	807898	Housing - Blower	1
305	805406	Screw - Hex.	1
307	805025	Screw - Hex.	1
308	808310	Cover - Air Guide (Cyl. #1)	1
308A	808100	Cover - Air Guide (Cyl. #2)	1
353	806101	Washer - Lock	1
373	805383	Nut - Hex.	1

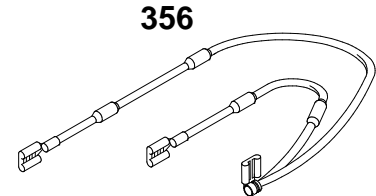
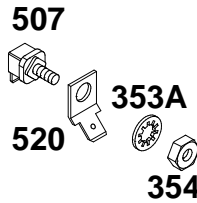
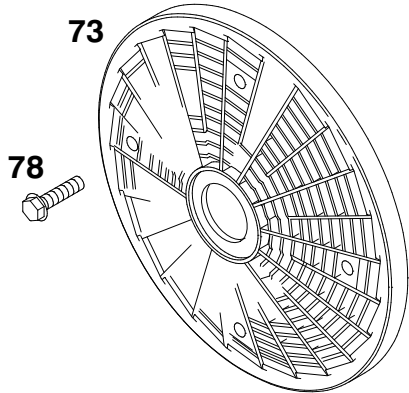
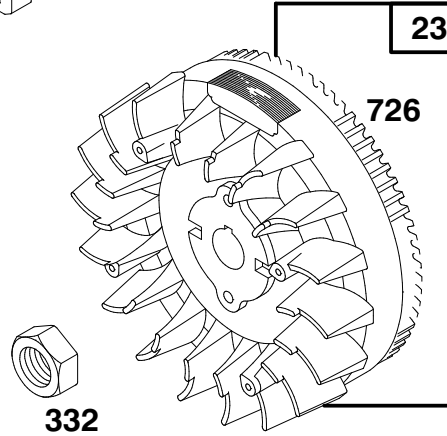
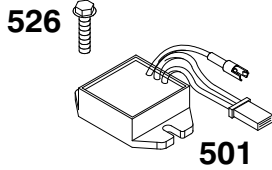
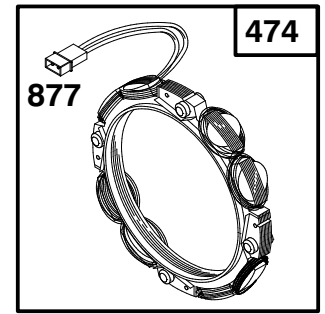
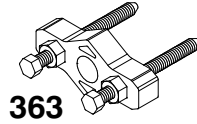
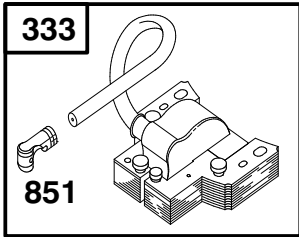
Ref. No.	Part No.	Description	No. Used
423	805260	Screw - Phillips Hex.	1
526	805448	Screw - Phillips Hex.	1
573	807663	Back Plate Assembly	1
657	805009	Screw - Phillips	1
727	805505	Shield - Starter	1
865	807661	Cover - Air Guide	1
866	805738	Valley Cover - Air Guide	1
879	805841	Cover - Carburetor	1
1036	499366	Label Kit - Emission	1
1046	805753	Plug - Blower Housing	1



Assemblies include all parts shown in frames.

ENGINE BRIGGS & STRATTON MODEL 303447-1180-E1

Ref. No.	Part No.	Description	No. Used	Ref. No.	Part No.	Description	No. Used
201	805480	Link – Governor	1	265	221535	Clamp – Casing	1
209	805463	Spring – Governor	1	271	808145	Bracket – Choke Control	1
209A	805450	Spring – Governed Idle	1	277	805018	Washer	1
209B	805453	Spring – Governor	1	307	805025	Screw – Hex.	1
216	805439	Link – Choke	1	351	805169	Screw – Hex.	1
222	808195	Bracket – Governor Control	1	562	805381	Bolt – Carriage	1
227	807528	Lever Assembly – Governor	1	592	805383	Nut – Hex.	1
232	805465	Spring – Governor Link	1				

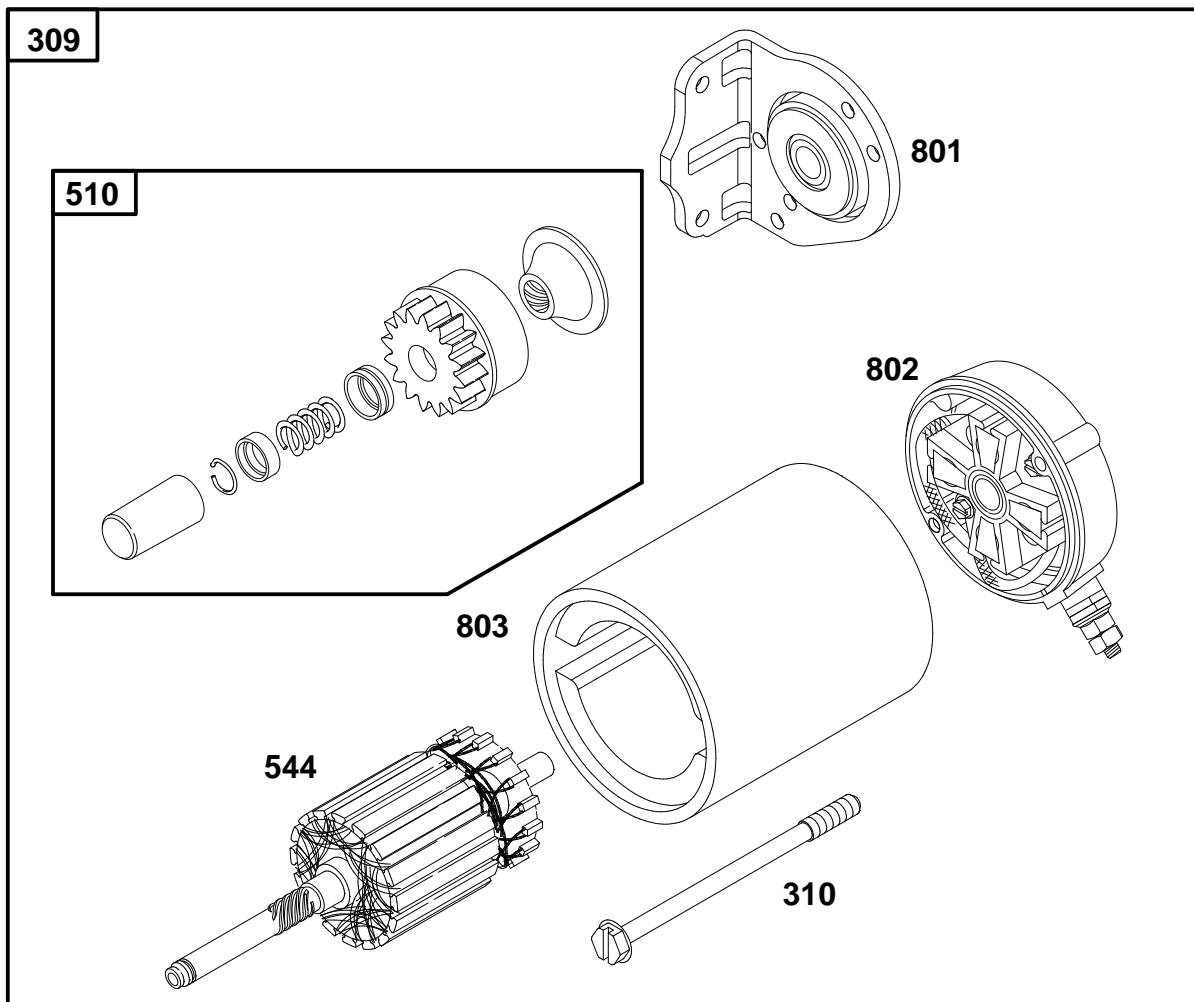


Assemblies include all parts shown in frames.

ENGINE BRIGGS & STRATTON MODEL 303447-1180-E1

Ref. No.	Part No.	Description	No. Used
23	808128	Flywheel - Magneto	1
73	494439	Screen - Rotating	1
78	805447	Screw - Hex.	1
332	806028	Nut - Hex.	1
333	492341	Armature - Magneto	1
334	805407	Screw - Hex.	1
353A	92791	Washer - Lock (Internal Tooth)	1
354	90576	Nut - Hex.	1
356	493792	Wire - Stop	1
363	19203	Puller - Flywheel	1
474	393295	Stator - Alternator	1

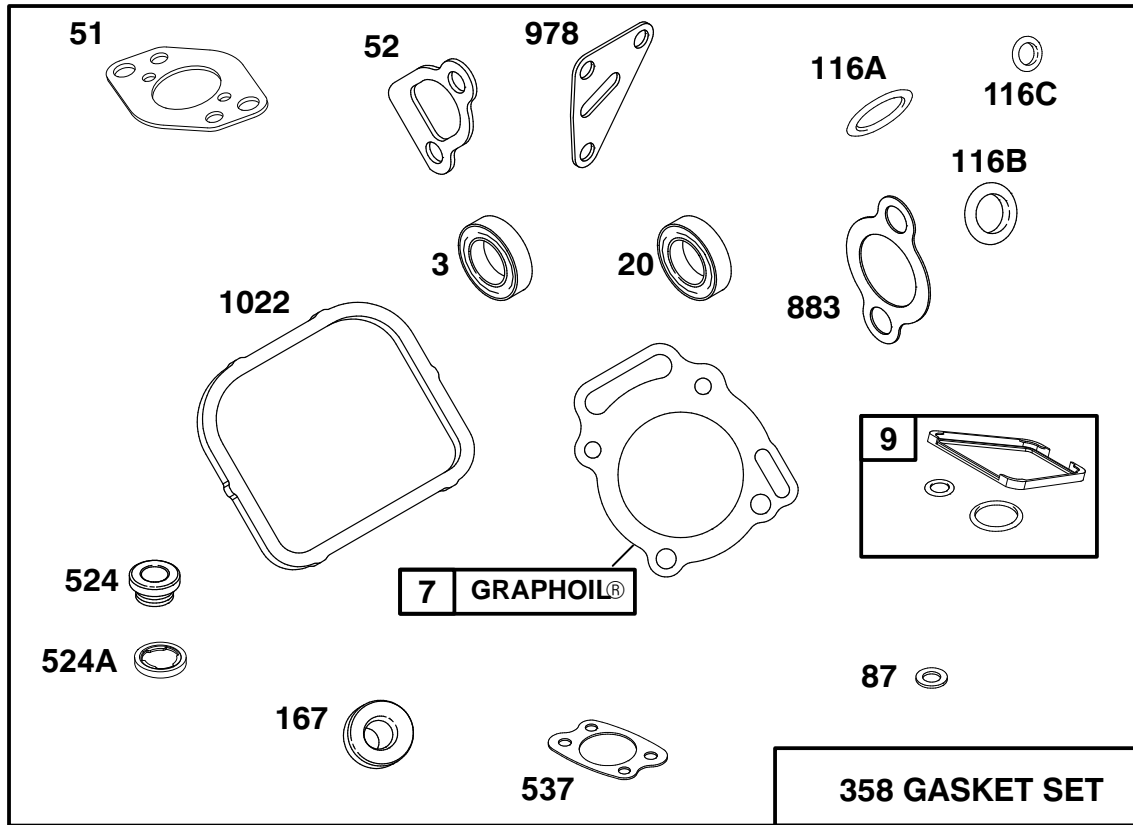
Ref. No.	Part No.	Description	No. Used
501	394890	Regulator - Alternator	1
507	398525	Insulator	1
520	93722	Terminal - Spade	1
526	805448	Screw - Hex.	1
529	805641	Grommet	1
726	808162	Gear - Flywheel Ring Includes Mounting Hardware.	1
729	280470	Clip - Wire	1
851	493880	Terminal - Ignition Cable	1
877	393537	Wire - Alternator	1
1054	280275	Tie - Cable	1



ENGINE BRIGGS & STRATTON MODEL 303447-1180-E1

Ref. No.	Part No.	Description	No. Used
188	805247	Screw-Hex.	1
309	808106	Motor-Starter	1
310	496880	Bolt-Thru	1
510	496881	Drive-Starter	1
544	496816	Armature-Starter	1

Ref. No.	Part No.	Description	No. Used
801	496814	Cap-Drive	1
802	496813	Cap-End Note: Includes 496887	1
803	496815	Housing-Starter	1



Assemblies include all parts shown in frames.

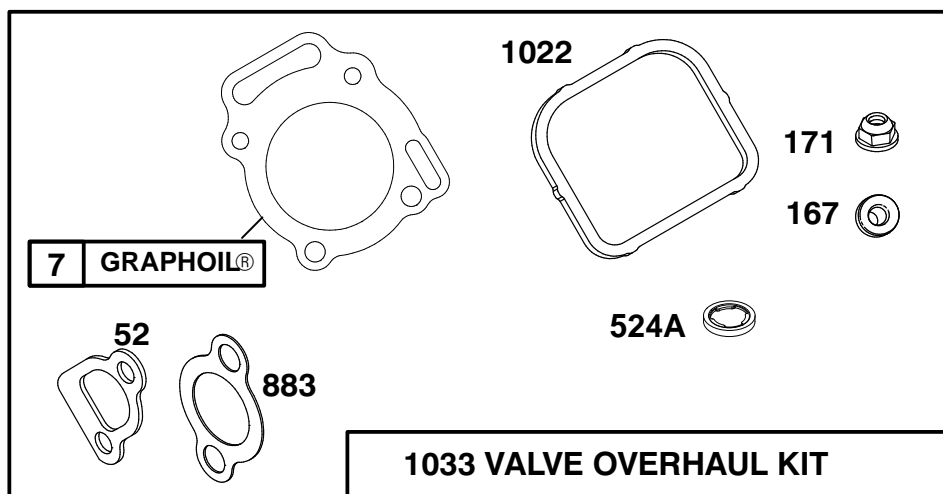
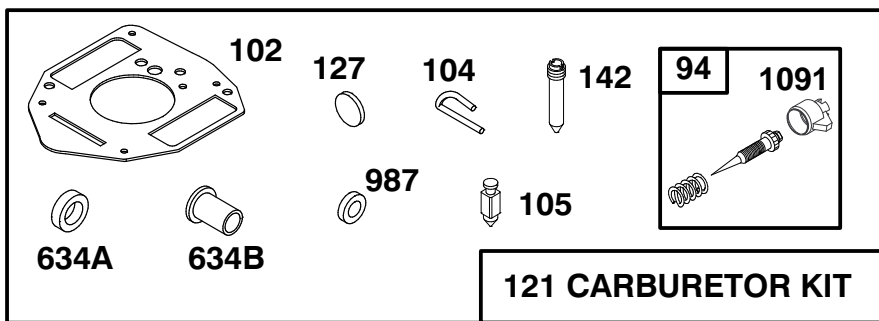
ENGINE BRIGGS & STRATTON MODEL 303447-1180-E1

Ref. No.	Part No.	Description	No. Used
*3	805101	Seal - Oil	1
*‡7	806085	Gasket - Cylinder Head	1
*9	807688	Gasket - Breather	1
*20	805049	Seal - Oil	1
*51	805700	Gasket - Carburetor Mtg.	1
*‡52	805023	Gasket - Intake Manifold	1
*87	805054	Seal - Governor Shaft	1
*116A	805386	O-Ring (Dipstick)	1
*116B	805058	O-Ring (Oil Pump)	1

Ref. No.	Part No.	Description	No. Used
*116C	805316	O-Ring (Pick - Up Tube)	1
*‡167	805420	Washer - Valve Cover	1
358	808390	Gasket Set	1
*524	281370	Seal - Fill Tube	1
*‡524A	271983	Seal - Filler Plug	1
*537	805655	Gasket - Air Cleaner	1
*‡883	805024	Gasket - Exhaust	1
*978	805250	Gasket - Oil Filter Adapter	1
*‡1022	806039	Gasket - Valve Cover	1

*Included in Gasket Set - Part No. 808390.

‡Included in Valve Overhaul Kit - Part No 808392.



Assemblies include all parts shown in frames.

ENGINE BRIGGS & STRATTON MODEL 303447-1180-E1

Ref. No.	Part No.	Description	No. Used	Ref. No.	Part No.	Description	No. Used
*‡7	806085	Gasket – Cylinder Head	1	‡171	805019	Nut – Nylock	1
*‡52	805023	Gasket – Intake Manifold	1	*‡524A	271983	Seal – Filler Plug	1
†94	808257	Valve – Idle Adjust	1	†634A	805557	Collar – Throttle	1
†102	805541	Gasket – Carburetor Body	1	†634B	805543	Collar – Choke	1
†104	805545	Pin – Float Hinge	1	*‡883	805024	Gasket – Exhaust	1
†105	805547	Valve – Fuel Inlet	1	†987	805544	Seal – Shaft	1
121	808273	Carburetor Kit	1	*‡1022	806039	Gasket – Valve Cover	1
†127	805559	Plug – Welch	1	1033	808392	Overhaul Kit – Valve	1
†142	805553	Nozzle – Carburetor	1	†1091	805862	Cap – Limiter	1
*‡167	805420	Washer – Valve Cover	1				

*Included in Gasket Set – Part No. 808390.

†Included in Carburetor Kit – Part No. 808273.

‡Included in Valve Overhaul Kit – Part No. 808392.

TORO PART NUMBER INDEX

Part No.	Description	Pg. No.	Ref. No.	Qty.	Part No.	Description	Pg. No.	Ref. No.	Qty.
117344	Handle - Latch	1	33	2	63-8360	Key - Ignition	7	7	2
3-6498	Washer - Thrust	16	17	1	65-8770	Bushing - Flange	4	7	2
10-6830	Stud - Drive	4	18	4	66-0120	Knob - Throttle	7	5	1
10-6850	Drum - Brake	23	9	2	66-2950	Asm-Hourmeter	7	2	1
10-7070	Key - Square	11	22	1	67-8050	Bearing - Needle	12	37	1
18-6320	Washer - Steering	4	24	4	67-8060	Seal - Lip	12	36	1
18-6380	Pin - Steering Adjustment	4	21	2	68-8990	Asm-Head, Filter	25	8	1
18-6380	Pin - Steering, Adjust	16	12	1	69-8930	Washer	19	21	4
18-7160	Pin - Cylinder	19	13	1	69-8960	Spacer	19	22	2
18-7310	Pin - Cylinder, Rake	19	8	1	69-9760	Plate - Cover	19	32	1
21-8640	Latch - Lever, Valve	17	20	1	70-2770	Head	22	10	1
22-4670	Hose - Hydraulic	19	4	2	70-2780	Piston	22	5	1
22-4670	Hose - Hydraulic	17	30	2	70-9840	Lining - Shoe	23	33	4
22-4670	Hose - Hydraulic	11	34	2	70-9850	Clip - Retaining	23	31	2
22-8330	Plug	18	1	2	70-9860	Shaft - Cam	23	36	2
22-8340	Spring	18	3	2	70-9870	Plate - Backing	23	10	2
22-8350	Ball	18	4	2	70-9880	Spring - Return	23	32	4
22-8360	Pin - Cam	18	6	2	71-1500	Asm-Brake	23	*	2
22-8370	Seat - Check Valve	18	5	2	71-4411	Spacer - Coupling	11	18	4
22-8380	Retainer - Spring	18	10	2	74-0340	Cushion - Rubber	9	10	2
22-8390	Spring Retainer	18	12	1	74-0720	Tube - Manual	9	5	1
22-8400	Spacer Float	18	13	1	74-9100	Pad - Pedal, Forward	15	15	1
22-8410	Spring	18	11	1	74-9110	Pad - Pedal, Reverse	15	5	1
22-8420	Spool	18	8	1	75-0540	Tether - Oil Cap	25	27	1
22-8480	Ring - Spool Retaining	18	14	1	75-4705	Hose - Fuel	10	8	1
22-8490	Ring - Retaining	18	15	1	75-5470	Spacer	16	22	1
22-8500	O-Ring	18	9	2	75-9830	Motor - Hydraulic, Wheel	4	42	1
23-9740	Filter - Oil	25	12	1	75-9831	Hydraulic Motor - Wheel	19	12	1
25-2380	Plate - Thrust	13	50	1	75-9840	Hydraulic Motor - Wheel	19	16	1
25-2400	Gasket - Cap, End	12	14	1	76-0810	Asm-Housing	20	*	1
25-2430	Pin	12	13	1	76-0810	Asm-Housing	21	*	1
25-2450	Swashplate	13	48	1	76-0810	Asm-Housing	6	*	1
25-2460	Plug	12	29	2	76-0820	Link - Drive	20	13	1
25-2470	Kit-Shim	12	30	2	76-0820	Link - Drive	21	13	7
25-2480	Spring	12	42	1	76-0820	Link - Drive	6	13	7
25-2490	Ball	12	4	2	76-0830	Rotor Set	20	*	1
25-2500	Shaft - Trunnion	12	43	1	76-0830	Rotor Set	21	*	1
25-2510	Washer	12	26	2	76-0840	Manifold	20	22	1
25-2570	Spring	12	31	1	76-0840	Manifold	21	22	1
25-2600	Kit-Cylinder Block	12	16	1	76-0840	Manifold	6	22	1
25-2640	Spring	12	3	2	76-0850	Bearing - Thrust	20	12	1
25-2650	Plug	12	1	2	76-0850	Bearing - Thrust	21	12	1
25-2690	Housing - Pump, Charge	12	35	1	76-0850	Bearing - Thrust	6	12	1
25-3180	Kit-Valve, Check	13	*	1	76-0860	Shaft - Coupling	20	11	1
25-3210	Seal - Lip	12	25	2	76-0860	Shaft - Coupling	21	11	1
26-2950	Standoff - Wire	11	7	1	76-0860	Shaft - Coupling	6	11	1
26-3790	Nut - Lock	23	4	2	76-0870	Plate - Wear	20	18	1
26-3790	Nut - Lock	4	39	1	76-0870	Plate - Wear	21	18	1
27-1960	Hub - Engine	11	21	1	76-0870	Plate - Wear	6	18	1
27-2320	Bearing - Side Flange	23	26	2	76-0880	Asm-Commutator	20	*	1
28-4210	Solenoid - Starter	7	17	1	76-0880	Asm-Commutator	21	*	1
28-8080	Boot - Terminal	24	33	1	76-0880	Asm-Commutator	6	*	1
29-6163	Switch - Neutral	16	2	1	76-0890	Asm-Cover, End	20	29	1
38-3400	Bumper	10	45	1	76-0940	Asm-Cover, End	21	24	1
38-3400	Snubber - Rubber	19	41	2	76-0940	Asm-Cover, End	6	24	1
38-3400	Snubber - Rubber	2	44	1	76-0950	Rotor Set	6	*	1
43-1710	Asm-Valve	17	14	1	76-1020	Screw - HH	21	14	1
43-5220	Ring - Retaining	22	12	1	76-1030	Screw - HH	6	14	1
43-5230	Shaft with Clevis	22	13	1	76-1040	Screw - HH	20	14	7
43-5260	Barrel - w/Clevis & Ports	22	2	1	76-1420	Wheel - Steering	4	1	1
46-8400	Bearing - Roller	13	51	1	76-8640	Stud - Traction	16	18	1
46-8560	Screw - HFH	1	9	6	80-8650	Coupling - Rubber	11	23	2
49-2040	Screw - HFH	16	8	3	83-0020	Asm-Ignition Switch	7	12	1
49-8510	Kit-Relief, Charge	13	*	1	83-1390	Fitting - Fuel Shut-Off	24	24	1
49-8520	Kit-Implement Relief	13	*	1	83-1770	Element - Air Cleaner	10	31	1
49-9600	Hub - Pump	11	24	1	83-2490	Boot	10	42	1
51-0600	Hose - Hydraulic	19	30	2	83-7000	Cylinder - Hydraulic	19	7	1
52-2480	Spacer	19	40	1	83-7250	Kit-Seal Repair	22	*	1
56-7720	Bolt - Battery	24	16	2	83-7260	Cone - Charge Relief	12	32	2
56-7976	Clamp - Tube	19	31	2	83-9310	Arm - Brake, RH	23	30	2
57-5420	Screw - Shoulder	25	2	1	84-1990	Rod - Adjusting	23	11	2
62-6660	Spacer	9	13	4	84-2000	Bracket - Brake	23	12	2

*Not Illustrated

TORO PART NUMBER INDEX (Cont.)

3321-303

Part No.	Description	Pg. Ref. No. No. Qty.	Part No.	Description	Pg. Ref. No. No. Qty.
85-0290	Spacer - Support, Seat	17 17 2	93-7276	Decal - Danger	24 30 1
85-0420	Plate - Cover	10 32 1	93-9051	Decal - Eccentric Bolt	16 9 1
85-0430	Knob - Air Cleaner	10 36 1	93-9052	Decal - Shields	7 35 1
85-0470	Gasket - Carburetor	10 39 1	94-1392	Pad - Rubber	1 32 2
85-0540	Screw	10 38 4	94-1414	Valve - Vacuator	3 5 1
85-6540	Stud - Drive Type	23 1 8	94-1883	Fender - Rear, LH	26 9 1
85-6610	Shaft - Steering Upper	4 3 1	94-1884	Fender - Rear, RH	26 1 1
85-8290	Tire	23 2 2	94-1885	Bracket - Support, Fender	26 8 1
85-8290	Tire	4 19 1	94-1886	Bracket - Support, Fender	26 7 1
85-8300	Lever - Pump	16 5 1	94-1887	Bracket - Support, Fender	26 10 1
85-8360	Gasket - Ring	10 20 1	94-1888	Bracket - Support, Fender	26 5 1
85-8370	Asm-Cover, Air Cleaner	10 19 1	94-2690	Filter - Fuel	24 31 1
85-8430	Asm-Base, Air Cleaner	10 21 1	94-3652	Asm-Cover	3 4 1
85-8460	Asm-Switch Arm	16 15 1	94-4519	Tube - Convuluted	2 39 1
85-8940	Flangette - Relube	4 17 1	94-6116	Rim	23 34 2
85-8950	Flangette - Standard	4 15 1	94-6116	Rim - Wheel	4 48 1
85-8960	Spacer	15 4 1	94-6821	R-Clamp	4 45 2
85-9030	Spring - Extension	16 13 1	94-8178	Kit-Seal	20 * 1
85-9120	Spacer	16 21 1	94-8178	Kit-Seal	21 * 1
85-9150	Plate - Switch	16 3 1	94-8178	Kit-Seal	6 * 1
85-9180	Sprocket	4 9 1	95-0550	Asm-Manifold	10 18 1
85-9200	Knuckle - Steering	4 33 1	95-0551	Tube - Exhaust	10 17 1
85-9550	Clamp - Rubber	1 3 2	95-0552	Muffler	10 1 1
85-9670	T-Nut	1 4 2	95-0553	Plate - Pump	16 10 1
86-7450	Wire - Battery, Ground	10 26 1	95-0555	Hose - Hydraulic	25 24 1
86-7450	Wire - Battery-Ground	24 27 1	95-0555	Hose - Suction	11 8 1
86-7450	Wire - Ground, Battery	8 4 1	95-0556	Base - Engine	10 15 1
86-7570	Asm-Wire	10 27 1	95-0557	Bracket - Muffler	10 7 1
86-7570	Wire - Battery, Solenoid	24 34 1	95-0559	Tube - Rear, RH Rear Motor	19 2 1
86-7640	Box - Litter	24 26 1	95-0560	Tube - Front, LH Rear Motor	19 9 1
88-8170	Asm-Housing, Variable	12 45 1	95-0562	Tube - Front, Motor RH	19 27 1
88-8180	Shaft - Trunnion	12 27 1	95-0563	Tube - Front, Motor LH	19 28 1
88-8190	Bearing - Journal	12 24 1	95-0563	Tube - Front, Motor LH	2 45 1
88-8210	Plug	12 33 2	95-0564	Tube - Front, RH Rear Motor	19 1 1
88-8230	Seal - Lip	13 53 1	95-0567	Tube - Rear, LH Rear Motor	19 10 1
88-8350	Tab - Bearing	4 11 1	95-0568	Bracket - Bulkhead	19 26 1
88-8480	Bracket - Pivot	17 9 1	95-0574	Harness - Wire	8 1 1
88-8640	Knob - Air Cleaner	10 35 3	95-0574	Harness - Wire	7 34 1
92-1678	Battery	24 15 1	95-0574	Harness - Wire	11 35 1
92-1705	Screen - Filter	25 20 1	95-0574	Harness - Wire	10 43 1
92-1715	Spacer	23 13 8	95-0574	Wire Harness	2 40 1
92-2343	Pedal	15 6 1	95-0575	Tube - Shuttle Valve	19 17 1
92-2344	Stud - Adjuster, Trunnion	15 11 1	95-0575	Tube - Valve, Shuttle	17 33 1
92-5018	Clamp - Battery	24 12 1	95-0576	Base - Fuel Tank	24 4 1
92-5035	Asm-Steering Shaft	4 5 1	95-0577	Fitting - Bulkhead, Tee	19 25 2
92-5039	Chain	4 23 1	95-0582	Hose - Air	10 33 1
92-7152	Hose - Fuel	24 8 1	95-0582	Hose - Air	1 22 1
92-7158	Tread - Floor, RH	1 25 1	95-0584	Rod - Pump, Control	15 10 1
92-7159	Tread - Floor, LH	1 13 1	95-0586	Asm-Clamp, Muffler	10 4 2
92-7160	Clip - Fuel Hose	24 9 1	95-0587	Asm-Hydraulic Pump	11 9 1
92-7179	Plate - Chain Stop	5 57 1	95-0588	Panel - Dash	7 11 1
92-7186	Tank - Fuel	24 2 1	95-0590	Base - Hydraulic Tank	25 18 1
92-8776	Plug	12 5 2	95-0591	Hose - Hydraulic	11 14 1
92-8777	O-Ring	12 6 2	95-0591	Hose - Hydraulic	2 43 1
92-8969	Spindle	4 38 1	95-0592	Hose - Hydraulic	11 11 1
92-8972	Clamp - Seat	9 8 2	95-0592	Hose - Hydraulic	17 32 1
92-8973	Angle	9 12 2	95-0595	Asm-Hydraulic Hose	11 5 2
92-8976	Seat	9 1 1	95-0595	Hose - Hydraulic	19 35 2
92-8981	Lever - Lift	17 6 1	95-0597	Asm-Choke Control	7 6 1
92-8983	Pivot	17 18 1	95-0598	Control - Throttle	7 15 1
92-8985	Decal - Operating	1 7 1	95-0599	Asm-Wire	24 * 1
92-8996	Screen	10 6 1	95-0599	Asm-Wire	7 19 1
92-8997	Cooler - Oil	1 2 1	95-0599	Asm-Wire	2 42 1
93-2195	Element - Air Cleaner	3 3 1	95-0599	Asm. - Wire	8 2 1
93-4365	Asm - Oil Cap	25 1 1	95-0600	Asm-Frame	4 29 1
93-6668	Decal - Battery	24 29 1	95-0601	Shroud - Lift Valve	17 2 1
93-6838	Hub - Wheel	23 5 2	95-0607	Decal - Sand Pro 3020	1 27 2
93-6838	Hub - Wheel	4 40 1	95-0610	Asm-Cover	1 8 1
93-6850	Lever - Brake	23 14 2	95-0611	Bracket - RH	2 34 1
93-7170	Cap - Fuel	24 1 1	95-0612	Bracket - LH	2 35 1
93-7251	Decal - Service (Europe)	9 9 1	95-0618	Hose - Fuel	24 22 1
93-7252	Decal - CE Mark	1 28 1	95-0619	Hose - Gas Line	24 32 1

*Not Illustrated

TORO PART NUMBER INDEX (Cont.)

Part No.	Description	Pg. No.	Ref. No.	Qty.	Part No.	Description	Pg. No.	Ref. No.	Qty.
95-0619	Hose - Gas Line	10	12	1	237-80	O-Ring	12	34	2
95-0620	Strip - Retainer	1	19	1	237-80	O-Ring	4	49	2
95-0625	Rod - Traverse	23	24	1	237-81	O-Ring	25	23	2
95-0628	Rod - Brake	23	25	1	237-86	O-Ring	12	2	4
95-0628	Rod - Brake	17	35	1	237-95	O-Ring	12	40	1
95-0629	Fitting - Hose, Push On	11	10	1	237-117	O-Ring	25	25	1
95-0629	Fitting - Hydraulic 90°	25	16	1	240-5	Grommet - Rubber	19	23	2
95-0631	Mount - Pump	11	25	1	240-9	Grommet	24	25	3
95-0632	Asm-Cover	11	2	1	240-11	Grommet	24	3	4
95-0636	Lever - Brake	17	21	1	240-11	Grommet	25	19	4
95-0637	Plate - Seat	9	11	1	242-50	Nut - Lug	23	3	8
95-0642	Locknut - Bulkhead	19	24	2	242-50	Nut - Lug	4	13	4
95-0643	Tube - Hydraulic	17	34	1	249-40	Keeper	2	36	2
95-0643	Tube - Valve to Cooler	1	6	1	2410-73	Retainer - Tether	25	26	1
95-0645	Plate - Hot Surface	10	25	1	2412-36	Clamp	25	13	1
95-0646	Decal - Service	9	9	1	2412-36	Clamp	11	36	1
95-0647	Decal - Control Panel	17	1	1	2412-36	Clamp - Hose	24	7	2
95-0648	Decal - Dash	7	9	1	2412-73	Clamp - R	24	20	1
95-5805	Asm-Air Cleaner	1	23	1	2412-73	R-Clamp	10	14	1
95-5806	Asm-Band, Mounting	1	24	1	2412-92	Clamp - Hose	1	21	2
95-5807	Spacer	1	16	2	2412-92	Clamp - Hose	10	34	1
95-5808	Cap - End	12	7	1	2412-98	Clamp - Hose	24	23	4
95-5809	Ball Bearing	12	20	1	2412-98	Clamp - Hose	10	28	1
95-5810	Shaft	13	47	1	2412-129	Clamp - Hose	11	30	1
95-5811	Plate - Valve	12	15	1	2412-129	Clamp - Worm	25	3	4
95-5812	Asm. - Gerotor	12	39	1	2412-133	Clamp - R	9	3	2
95-5813	Ring - Retaining	12	21	1	251-307	Bearing	16	20	2
95-5814	Valve - Acceleration	12	9	2	251-352	Asm-Bearing	4	16	1
95-5815	Spring - Valve, Acceleration	12	8	1	252-82	Bearing - Needle	12	44	1
95-5816	Plug	12	11	2	254-61	Cup - Bearing	4	28	2
95-5817	Shield - Front	1	26	1	254-70	Cone - Bearing	4	25	2
95-5818	Hood	1	1	1	256-113	Bushing - Flange	16	14	2
95-5825	Asm-Wire	7	18	1	256-185	Bushing - Sleeve	4	4	1
95-5825	Asm-Wire	2	41	1	256-219	Bushing - Flange	15	3	2
95-5825	Wire	8	3	1	2710-11	Link - Connecting	4	22	2
95-5826	Shield - Rubber	1	20	1	2710-20	Link - Offset	17	8	1
95-5827	Shield - Muffler	10	22	1	282-2	Clevis	23	15	2
95-5828	Strip - Wear	2	38	2	282-2	Clevis	17	22	1
95-5833	Guide - Lever, Lift	17	36	1	283-1	Pin - Clevis	23	16	2
95-5840	Shield - Seat Base	9	15	1	283-14	Pin - Clevis	17	24	1
95-7861	Decal - Infield Pro 3020	2	*	2	285-17	Plug	3	1	1
98-0924	Guide - Chain	5	54	1	285-17	Plug - Pipe	12	23	2
98-0925	Bracket - Chain	5	55	1	302-2	Fitting - Grease	4	26	1
98-0928	Shaft - Steering, Lower	4	34	1	302-33	Fitting - Grease	5	53	2
98-0940	Asm-Engine	10	16	1	302-60	Fitting - Grease	16	16	1
98-0950	Fork	4	10	1	321-3	Screw - HH	25	6	2
98-0968	Tank - Hydraulic	25	4	1	321-4	Screw - HH	23	17	8
98-0973	Pin - Grooved	4	8	1	321-4	Screw - Hex. Hd.	9	16	3
98-0992	Shield - Carburetor, Inlet	10	29	1	321-18	Screw - HH	19	29	1
98-8152	Hose - Hydraulic	25	14	1	321-23	Screw - HH	17	15	4
98-8153	Hose - Return	11	4	1	322-2	Screw - HH	1	18	2
98-8153	Hose - Return	25	28	1	322-2	Screw - HH	5	58	2
98-8154	Screw - Washer Face	10	37	5	322-3	Screw - HH	24	18	2
218-461	Nut - Hex.	7	26	1	322-4	Screw - HH	12	38	4
232-35	Stem - Valve	4	46	1	322-5	Screw - HH	4	6	4
232-35	Stem - Valve	23	35	2	322-5	Screw - HH	1	15	4
233-21	Knob	17	5	1	322-6	Screw - HH	10	2	3
237-30	O-Ring	12	12	2	322-6	Screw - Hex. Hd.	9	2	4
237-42	O-Ring	18	2	2	322-8	Screw - HH	16	19	1
237-42	O-Ring	17	31	2	322-8	Screw - HH	17	28	2
237-42	O-Ring	11	32	2	322-10	Screw - HH	10	13	4
237-42	O-Ring	19	39	1	322-14	Screw - HH	15	1	1
237-78	O-Ring	22	1	2	322-14	Screw - HH	1	11	2
237-78	O-Ring	20	25	2	322-17	Screw - HH	11	19	4
237-78	O-Ring	17	29	2	323-6	Screw - HH	25	10	3
237-78	O-Ring	19	36	2	323-6	Screw - HH	24	13	3
237-79	O-Ring	12	10	3	323-6	Screw - HH	11	15	6
237-79	O-Ring	25	22	1	323-7	Screw - HH	26	6	6
237-79	O-Ring	1	29	2	323-10	Screw - HH	16	4	1
237-79	O-Ring	11	29	3	323-29	Screw - HH	4	14	3
237-79	O-Ring	19	37	4	323-45	Screw - HH	13	55	4
237-80	O-Ring	11	31	1	325-5	Screw - HH	19	19	4

*Not Illustrated

TORO PART NUMBER INDEX (Cont.)

3321-303

Part No.	Description	Pg. No.	Ref. No.	Qty.	Part No.	Description	Pg. No.	Ref. No.	Qty.
325-7	Screw - HH	11	6	2	3290-378	Tie - Cable	11	33	1
325-10	Screw - HH	5	59	2	3290-379	Tie - Cable	10	44	1
325-14	Screw - HH	23	6	8	3290-379	Tie - Wire	2	37	3
3217-9	Nut - Hex.	23	8	4	3290-477	Washer - Wave	17	37	1
3217-9	Nut - Hex.	11	27	2	3295-26	Rivet - Semi Tubular	1	31	2
3217-25	Nut - Hex.	7	33	2	3296-2	Nut - Lock	17	10	2
3218-5	Nut - Jam	15	12	2	3296-4	Nut - Lock	4	20	2
3218-13	Nut - Jam	7	22	2	3296-4	Nut - Lock	16	11	1
3219-3	Nut - Hex.	7	14	1	3296-8	Nut - Lock	19	33	1
3219-14	Nut - Hex.	7	24	4	3296-9	Nut - Lock	16	1	2
3220-2	Nut - Hex.	17	23	1	3296-12	Nut - Lock	7	16	2
3220-2	Nut - Hex. Jam	23	18	2	3296-16	Nut - Lock	17	38	2
3234-1	Screw - HHF	23	29	4	3296-23	Nut - Lock	4	43	2
3234-4	Screw - HH	17	3	2	3296-25	Nut - Hex.	4	52	2
3234-5	Screw - Hex. Hd.	9	7	4	3296-29	Nut - Hex.	10	5	7
3234-33	Screw - HFH	1	14	3	3296-29	Nut - Lock	26	4	8
3234-33	Screw - HH	7	1	4	3296-29	Nut - Lock	9	6	4
3241-5	Screw - Set, Square Hd.	11	20	4	3296-29	Nut - Lock	15	7	1
3250-36	Screw - PPH	24	6	4	3296-29	Nut - Lock	16	7	2
3250-36	Screw - PPH	25	17	3	3296-29	Nut - Lock	1	12	6
3253-3	Washer - Lock	25	7	2	3296-29	Nut - Lock	11	16	4
3253-4	Washer - Lock	7	23	2	3296-29	Nut - Lock	24	17	2
3253-4	Washer - Lock	5	56	2	3296-29	Nut - Lock	17	27	2
3253-5	Washer - Lock	11	3	6	3296-29	Nut - Lock	4	35	4
3253-7	Washer - Lock	23	7	8	3296-39	Nut - Lock	24	5	3
3253-7	Washer - Lock	11	28	2	3296-39	Nut - Lock	4	12	3
3253-17	Washer - Lock	7	25	2	3296-39	Nut - Lock	15	14	1
3254-5	Washer - Lock ITLW	7	27	1	3296-39	Nut - Lock	25	15	3
3254-6	Washer - Lock ITLW	7	13	1	3296-39	Nut - Lock	16	23	1
3255-7	Washer - Lock, Int. Tooth	10	24	3	3296-42	Nut - Lock	17	11	4
3255-8	Washer - Lock, Ext. Tooth	10	11	1	3296-42	Nut - Lock	9	14	3
3255-20	Washer - Lock ITLW	7	32	2	3296-42	Nut - Lock	24	19	1
3256-1	Washer - Flat	10	10	4	3296-42	Nut - Lock	23	21	8
3256-3	Washer - Flat	9	4	4	3296-59	Nut - Lock	23	27	4
3256-4	Washer - Flat	24	28	4	32103-12	Nut - Wing	24	10	2
3256-4	Washer - Flat	25	21	3	32104-76	Screw - Self Tapping	17	16	1
3256-22	Washer - Flat	24	11	2	32104-95	Screw - Self Tapping	7	20	2
3256-23	Washer - Flat	15	2	1	32105-2	Screw - HH	7	4	2
3256-23	Washer - Flat	10	3	6	32105-21	Screw - Machine	16	6	2
3256-23	Washer - Flat	1	10	4	32120-11	Ring - Retaining	12	46	1
3256-23	Washer - Flat	11	17	4	32120-47	Ring - Retaining	23	22	2
3256-23	Washer - Flat	17	26	1	32121-6	Pin - Roll	23	23	3
3256-24	Washer - Flat	25	9	3	32121-15	Pin - Spiral	4	32	2
3256-24	Washer - Flat	15	13	2	32121-73	Pin - Spring	17	19	1
3256-24	Washer - Flat	24	14	3	32121-91	Pin - Spring	13	49	4
3256-24	Washer - Flat	23	28	4	32121-111	Pin - Spiral	4	2	1
3256-25	Washer - Flat	15	9	1	32136-9	Nut - Slotted	4	31	1
3256-26	Washer - Flat	19	20	4	32144-11	Screw - HFH.	7	3	2
3256-70	Washer - Flat	26	2	16	32144-14	Screw - HWHTF	19	3	2
3256-78	Washer - Flat	19	34	1	32151-46	Ring - Retaining	12	28	2
3256-82	Washer - Flat	1	17	2	32152-10	Nut	22	3	1
3257-32	Key - Woodruff	12	19	2	33113-008	Screw	10	41	5
3257-32	Key - Woodruff	11	26	1	33113-012	Screw - HH	10	23	2
3257-42	Key - Woodruff	20	17	1	353-212	Fitting - Hydraulic 45°	17	13	1
3257-42	Key - Woodruff	21	17	1	353-212	Fitting - Hydraulic 45°	19	15	1
3257-42	Key - Woodruff	6	17	1	353-371	Fitting - Hydraulic 90°	1	5	2
3257-42	Key - Woodruff	19	38	2	353-374	Fitting - Hydraulic 90°	11	13	1
3257-42	Key - Woodruff	4	51	1	353-426	Fitting - Hydraulic 90°	19	11	4
3269-8	Rivet - Pop	1	30	6	353-427	Fitting - Hydraulic 45°	4	41	2
3269-32	Rivet - Pop	10	9	2	353-431	Fitting - Hydraulic 45°	19	14	
3272-6	Pin - Cotter	23	19	3	353-511	Fitting - Hydraulic 90°	17	4	1
3272-6	Pin - Cotter	17	25	1	353-511	Fitting - Hydraulic 90°	11	12	1
3272-10	Pin - Cotter	23	20	2	353-877	Fitting - Swivel Run Tee	17	12	1
3272-16	Pin - Cotter	15	8	1	353-987	Fitting - Hydraulic 90°	25	11	2
3272-23	Pin - Cotter	19	6	4	353-988	Plug	12	22	1
3272-37	Pin - Cotter	4	30	1	353-990	Plug	20	24	2
3274-55	Screw - HSBH	26	3	8	354-120	Fitting - Hydraulic 45°	25	5	1
3274-69	Screw - HSBH	24	21	1	354-126	Fitting - Barb	11	37	1
3274-93	Screw - HSH	4	44	2	354-132	Fitting - Hydraulic 90°	19	5	1
3290-360	Screw - HH	17	7	2					

*Not Illustrated

PRODUCT CHANGES

In an effort to make improvements available to TORO owners as quickly as possible, minor changes are incorporated into Toro's products from time to time that do not become immediately shown in the Parts Catalog. If such a change has been made in your unit, which is not reflected in your manual, see your TORO Distributor or his Authorized TORO Service Dealer for information and part numbers.

IDENTIFICATION AND ORDERING

MODEL AND SERIAL NUMBERS

The Sand Pro 3020 has two identification numbers; a model number and a serial number. The two numbers are stamped on a plate located on the left fender. In any correspondence concerning the Sand Pro 3020, supply model and serial numbers to assure that correct information and replacement parts are obtained.

To order replacement parts from an Authorized TORO Service Dealer, supply the following information:

1. Model and serial number of the Sand Pro 3020.
2. Part number, description, and the quantity of part(s) desired.

NOTE: Do not order by reference number if a parts catalog is being used; use the PART NUMBER.

TABLE OF CONTENTS

Description	Page	Description	Page
Shrouding & Oil Cooler Assembly	1-2	Hydraulic Lift Valve Assembly No. 43-1710	18
Air Cleaner Assembly No. 95-5805	3	Rear Wheel Drive Assembly	19
Front Wheel & Steering Assembly	4-5	Hydraulic Drive Motor Right Rear	
Hydraulic Drive Motor Front No. 75-9830	6	Right Rear No. 75-9840	20
Dash Panel Assembly	7	Hydraulic Drive Motor Left Rear	
Electrical Schematic	8	Left Rear No. 75-9831	21
Seat Assembly	9	Hydraulic Cylinder Assembly No. 83-7000	22
Engine Installation Assembly	10	Rear Wheel Brake Assembly	23
Hydraulic Pump Installation Assembly	11	Fuel Tank Assembly	24
Hydraulic Pump Assembly No. 95-0587	12-13	Hydraulic Oil Reservoir & Filter Assembly	25
Hydraulic Schematic	14	Fender Assembly - Europe	26
Traction Pedal Assembly	15	Engine - Briggs & Stratton	
Pump Control Lever Assembly	16	Model 303447-1180-E1	27-37
Lift Valve Installation Assembly	17	TORO Part Number Index	38-41

