



Auxiliary Switch Kit

TX 1000 Compact Tool Carrier

Model No. 133-0245

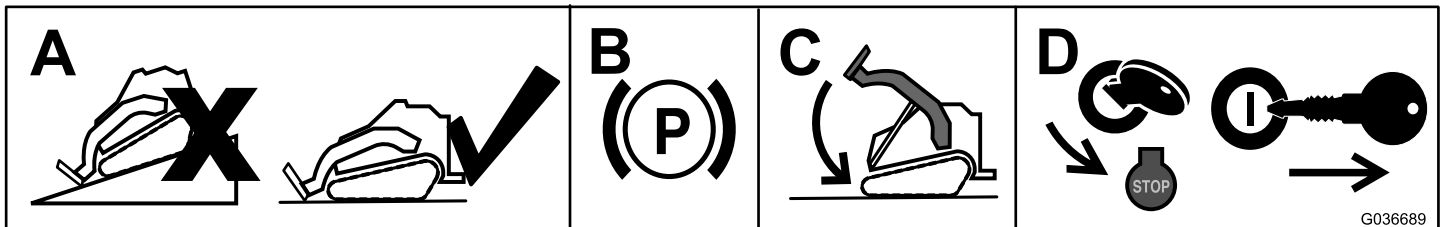
Installation Instructions

⚠ WARNING

CALIFORNIA Proposition 65 Warning

This product contains a chemical or chemicals known to the State of California to cause cancer, birth defects, or reproductive harm.

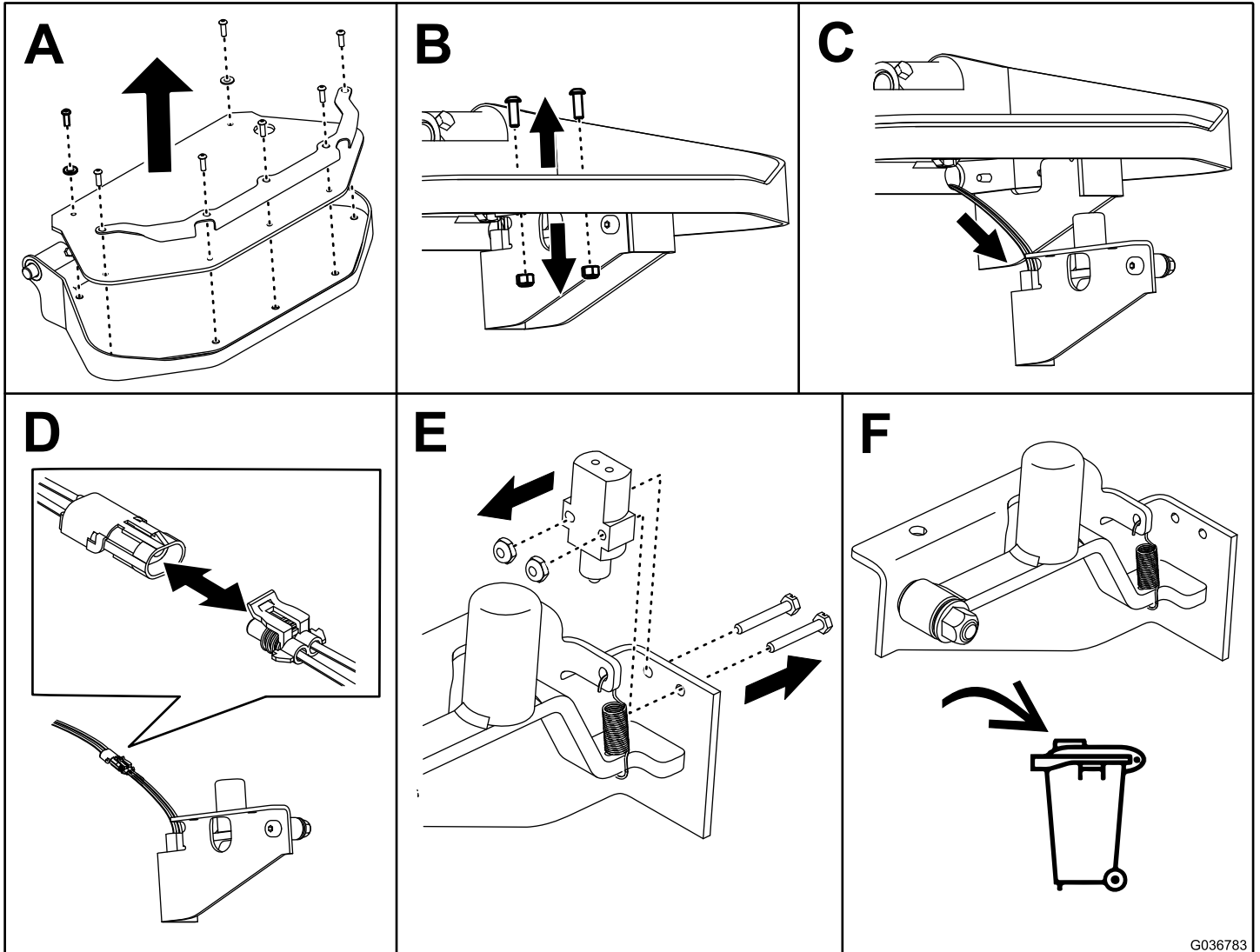
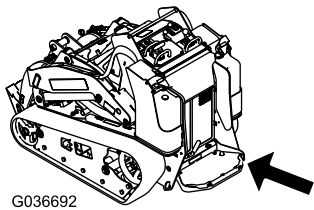
Preparing the Machine



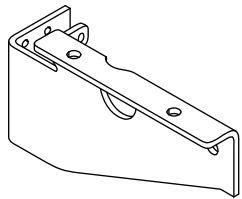
G036689



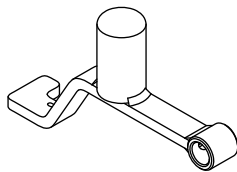
Removing the Existing Switch



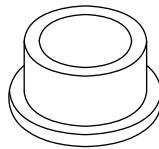
Installing the Kit



1x



1x



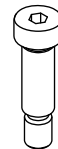
2x



1x



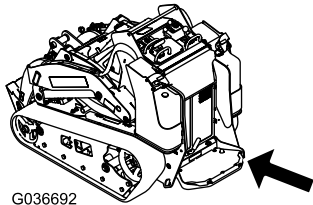
1x



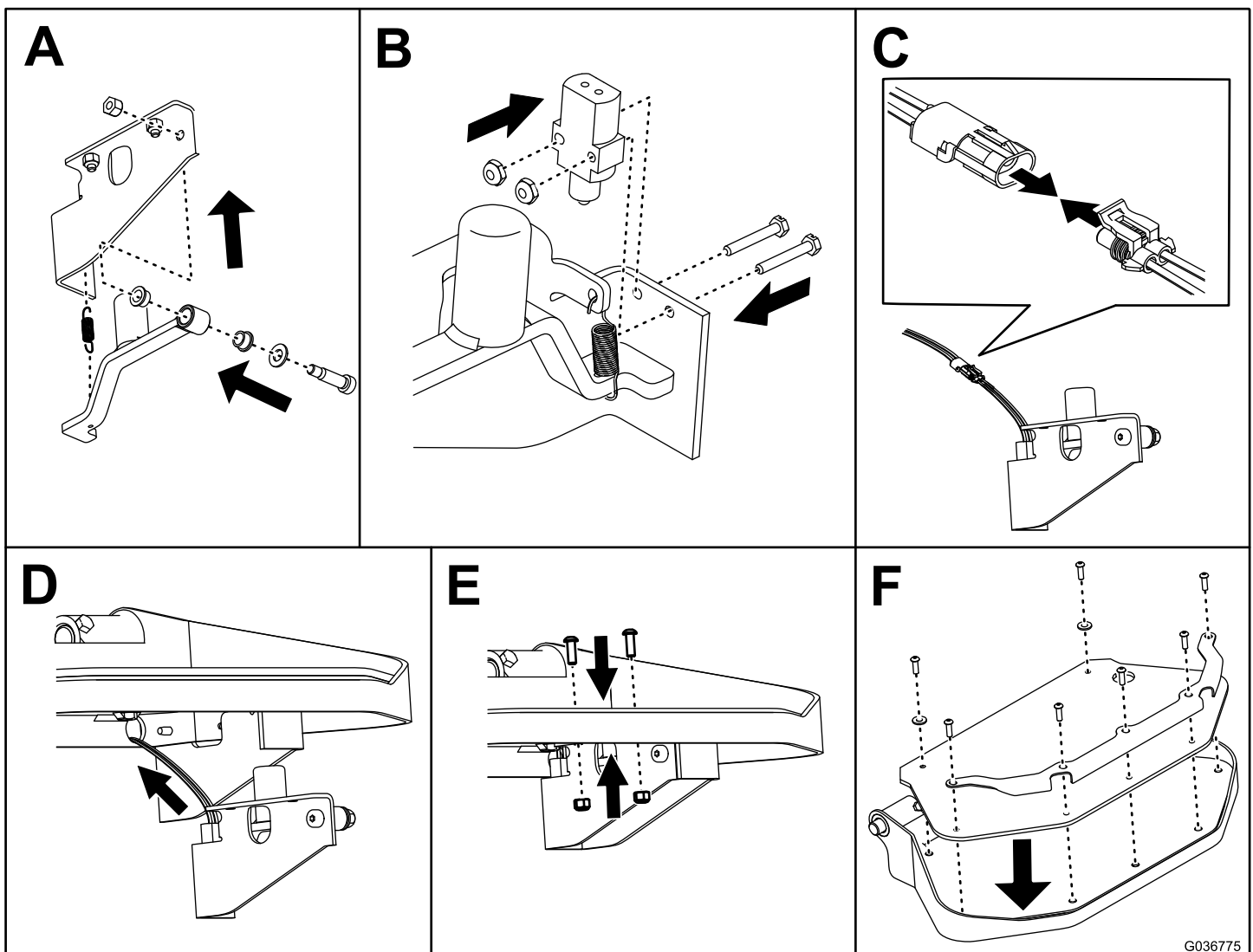
1x



1x



G036692



G036775

Note: When you finish installing the kit, move the auxiliary hydraulics lever to the FORWARD position and verify that the lever locks in that position when you press down the auxiliary switch.



Count on it.