



Road Light and Homologation Kit

Multi Pro® 1750 Turf Sprayer

Model No. 41250—Serial No. 314000001 and Up

Installation Instructions

This kit is designed to add the light components required for on-road travel. It is a dedicated attachment for a turf spray application vehicle and is intended to be used by professional, hired operators in commercial applications.

Note: Determine the left and right sides of the machine from the normal operating position.

Read these instructions carefully to learn how to operate and maintain your product properly. The information in this manual can help you and others avoid injury and product damage. Although Toro designs and produces safe products, you are responsible for operating the product properly and safely.

You may contact Toro directly at www.Toro.com for product and accessory information, help finding a dealer, or to register your product.

Whenever you need service, genuine Toro parts, or additional information, contact an Authorized Service Dealer or Toro

Customer Service and have the model and serial numbers of your product ready. Figure 1 illustrates the location of the model and serial numbers on the product.

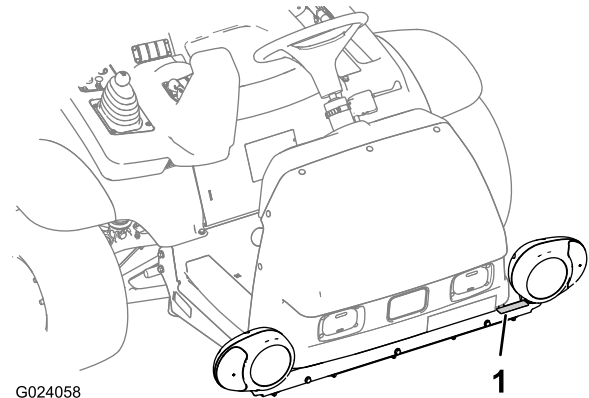


Figure 1

1. Model and serial number plate

▲ WARNING

CALIFORNIA Proposition 65 Warning

This product contains a chemical or chemicals known to the State of California to cause cancer, birth defects, or reproductive harm.



Installation

Loose Parts

Use the chart below to verify that all parts have been shipped.

Procedure	Description	Qty.	Use
1	No parts required	–	Prepare the machine.
2	No parts required	–	Remove the seat.
3	Headlight support Bolt (5/16 x 2-1/4 inch) Washer (5/16 inch) Flanged locknut (5/16 inch) Headlight Rear-light bracket (left) Rear-light bracket (right) Rear-light assembly	1 3 3 3 2 1 1 2	Install the front and rear lights.
4	Decal Speed sign Flange-head bolts (5/16 x 3/4 inch) Flange locknuts (5/16 inch)	3 1 2 2	Install the license plate brackets and speed signs.
5	Data plate Rivet (5 x 10 mm)	1 4	Install the data plate.
6	Turn-signal switch Hose clamp	1 1	Install the turn-signal switch.
7	Horn assembly 90° bracket Flange-head screw (5/16 x 3/4 inch) Flange locknut (5/16)	1 1 1 1	Install the horn.
8	Flasher module Push-in fastener Fuse (15 A)	1 1 1	Install the flasher module and the main-block fuse.
9	Wire harness Cable tie	1 6	Route and install the wire harness to the machine.
10	License-plate light Screw (#10 x 5/8 inch) Locknut (#10)	1 1 2	Install the license plate light.
11	Hazard switch	1	Install the hazard switch.
12	Horn switch Button cover 3-position switch Light-switch decal (plain)	1 1 1 1	Install the light switch and the horn button.
13	No parts required	–	Connect the battery.

Procedure	Description	Qty.	Use
14	Lock-mount bracket	1	Install the seat lock.
	Latch	1	
	Grip	1	
	Hex-head screw (12 x 30 mm)	1	
	Locknut (12 mm)	1	
15	No parts required	–	Install the seat.

1

Preparing the Machine

No Parts Required

Procedure

1. Move the machine onto a level surface, set the parking brake, shut off the pump, shut off the engine, and remove the ignition key.
2. Unlatch the seat by pushing the seat-latch handle rearward (Figure 2).

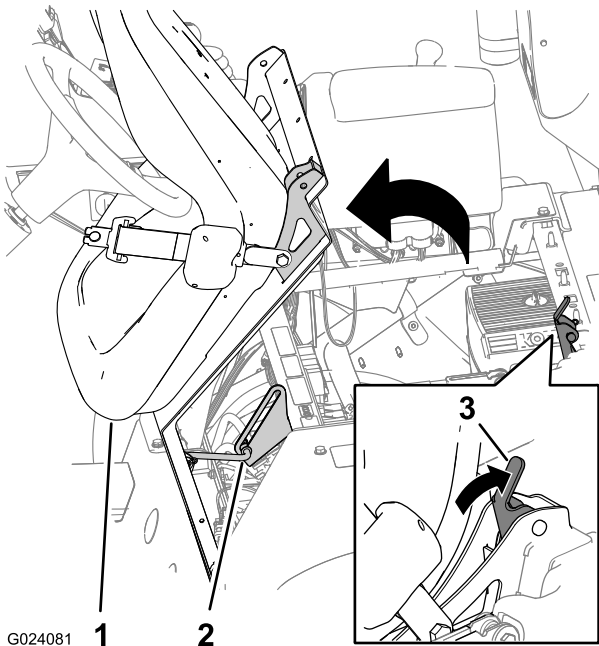


Figure 2

1. Seat
2. Prop rod
3. Seat-latch handle

3. Rotate the seat and seat plate forward until the end of the prop rod at the prop-rod bracket is at the bottom of the groove of the bracket (Figure 2).
4. Disconnect the battery by removing the bolt and nut that secures the terminal of the positive-battery cable to the positive post of the battery.

Note: Ensure that the terminal of the battery cable does not touch the post.

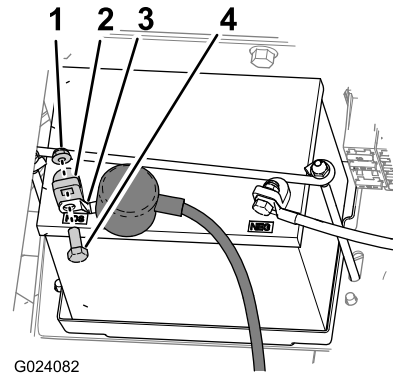


Figure 3

1. Nut
2. Battery post
3. Terminal (positive-battery cable)
4. Bolt

2

Removing the Seat

No Parts Required

Procedure

1. Remove the electrical connector of the chassis harness that connects to the seat-switch connector (Figure 4).

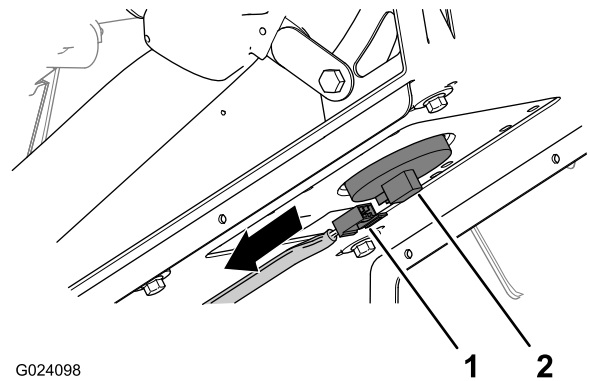
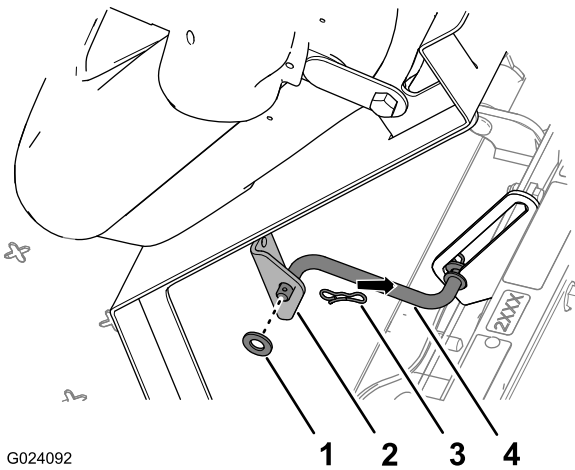


Figure 4

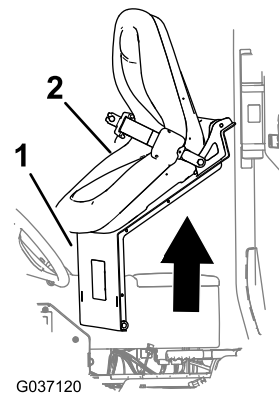
1. Connector (chassis harness)
2. Seat-switch connector

2. Remove the hairpin that secures the prop rod to the bracket at the bottom of the seat plate (Figure 5).



G024092

Figure 5



G037120

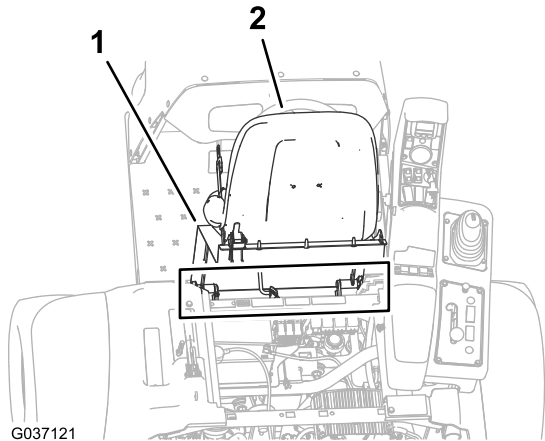
Figure 7

1. Seat plate

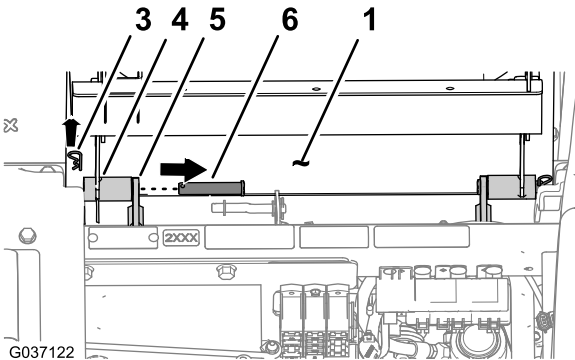
2. Seat

- 1. Washer
- 2. Bracket (seat)
- 3. Hairpin
- 4. Prop rod

- 3. Remove the 2 hairpins that secure the pivot fitting of the seat plate to the chassis brackets (Figure 6).



G037121



G037122

Figure 6

- 1. Seat plate
- 2. Seat
- 3. Hairpin
- 4. Pivot fitting (seat pan)
- 5. Chassis bracket
- 6. Pivot pin

- 4. Remove the 2 pivot pins that secure the seat and seat plate to the chassis (Figure 6).
- 5. Lift the seat and seat plate up and out of the machine (Figure 7).

3

Installing the Front and Rear Lights

Parts needed for this procedure:

1	Headlight support
3	Bolt (5/16 x 2-1/4 inch)
3	Washer (5/16 inch)
3	Flanged locknut (5/16 inch)
2	Headlight
1	Rear-light bracket (left)
1	Rear-light bracket (right)
2	Rear-light assembly

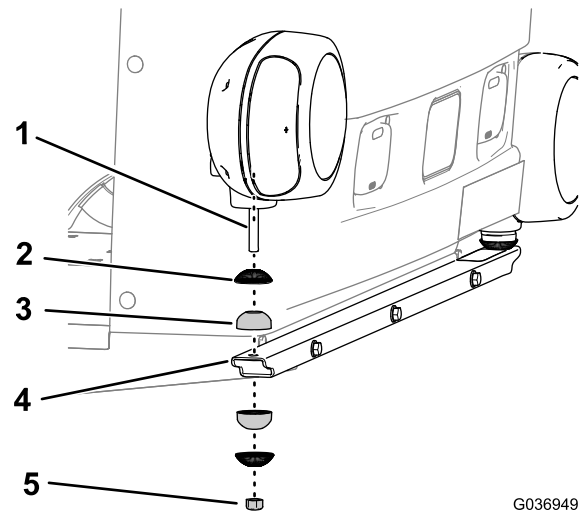


Figure 9

G036949

1. Threaded post (headlight)
2. Joint half
3. Serrated shell
4. Vertical hole (front-light support)
5. Locknut (10 mm)

Installing the Front Lights

1. Align the holes in the front-light support with the holes in the front channel of the chassis (Figure 8).

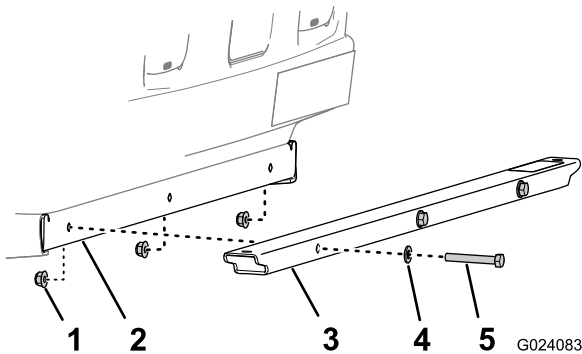


Figure 8

G024083

1. Flanged locknut
2. Front channel
3. Front-light support
4. Washer
5. Bolt (5/16 x 2-1/4 inch)

2. Secure the light support to the channel with the 3 bolts (5/16 x 2-1/4 inch), 3 washers, and 3 flanged locknuts (Figure 8).
3. Torque the bolts and nuts to 19.8 to 25.4 N·m (175 to 225 in-lb).
4. Remove the locknut (10 mm), 1 joint half, and 1 serrated shell from the headlight assembly (Figure 9).

5. Align the threaded post of the headlight with the vertical hole at the end of the headlight support (Figure 9).
- Note:** Ensure that the upper joint half and the serrated shell are aligned as shown in Figure 9.
6. Install the headlight to the front-light support with the serrated shell, joint half, locknut that you removed in step 4 and tighten the nut hand tight.
 7. Repeat steps 4 through 6 for the other headlight.

Installing the Rear Lights

1. Align the holes of the rear-light bracket with the 2 holes in the center-boom channel.

Note: The left and right rear-light bracket are unique. Ensure that the short flange of the bracket is flush with the surface of the channel.

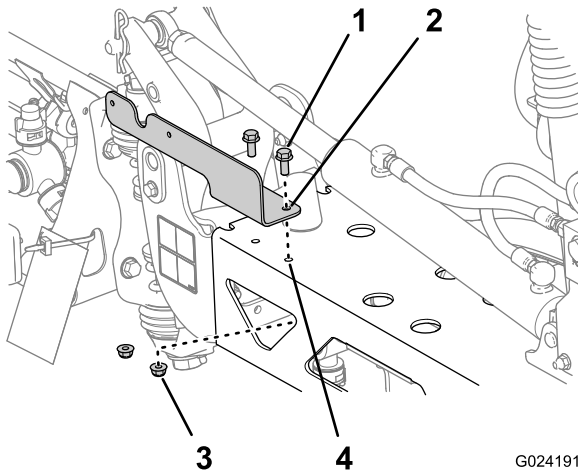


Figure 10

Left bracket installation shown; right bracket installation is similar

- | | |
|--|------------------------|
| 1. Flanged-head bolt (5/16 x 3/4 inch) | 3. Locknut (5/16 inch) |
| 2. Rear-light bracket (left bracket shown) | 4. Boom-frame channel |

2. Secure the bracket to the frame with the 2 flanged-head bolts (5/16 x 3/4 inch) and 2 locknuts (5/16 inch) as shown in [Figure 10](#).
3. Repeat steps 1 and 2 for the other rear-light bracket at the other end of the center-boom channel.
4. Align the rear-light assembly to the rear-light bracket with the amber-lens outboard ([Figure 11](#)).

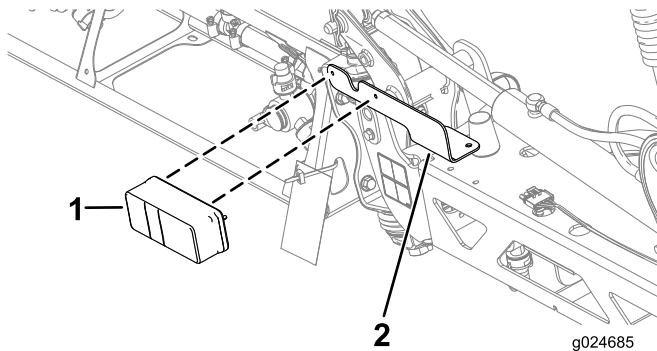


Figure 11

- | | |
|------------------------|-----------------------|
| 1. Rear-light assembly | 2. Rear-light bracket |
|------------------------|-----------------------|

5. Secure the rear-light assembly to the bracket with the 2 nuts (5/16-18) and the 2 lock washers that are provided with the light assembly.

6. Repeat steps 4 and 5 at the other rear-light bracket at the other end of the center-boom channel.

4

Installing the Speed Signs and License Plate Brackets

Parts needed for this procedure:

3	Decal
1	Speed sign
2	Flange-head bolts (5/16 x 3/4 inch)
2	Flange locknuts (5/16 inch)

Installing the Speed Decal the Sprayer Tank

1. At the left and right sides of the tank, measure from the top of the sprayer tank downward approximately 120 mm (4-3/4 inches) and mark that location on the tank with a piece of tape (A of [Figure 12](#)).

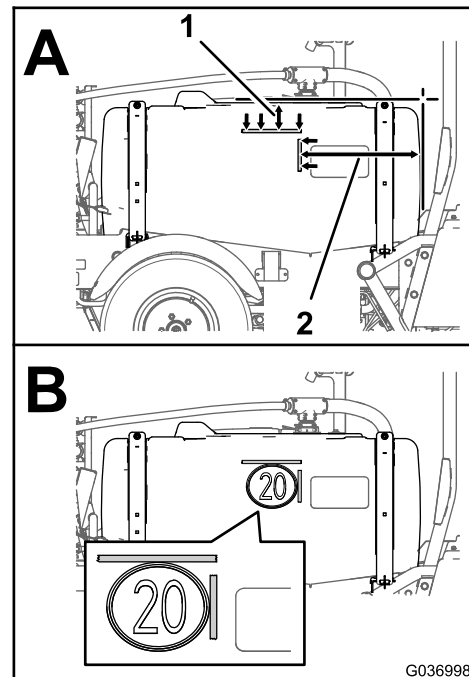


Figure 12

- | | |
|--|--|
| 1. Top of the tank to the edge of the tape—120 mm (4-3/4 inches) | 2. Front of the tank to the edge of the tape—469 mm (18-7/16 inches) |
|--|--|

2. At the left and right sides of the tank, measure from the front of the sprayer tank rearward approximately 469 mm (18-7/16 inches) and mark that location on the tank with a piece of tape (A of [Figure 12](#)).

3. Remove the backing from a speed decal.
4. Align the top and forward edges of the sprayer decal (B of Figure 12) with the tape marks that you made in steps 2 and 1.
5. Press the decal onto the surface of the tank from the top down while removing air bubbles as you apply the decal.
6. Remove the masking tape from the tank.
7. Repeat steps 3 through 6 at the other side of the tank.

Installing the Speed Sign the Center-Boom Section

1. Remove the backing from a speed decal (A of Figure 13).

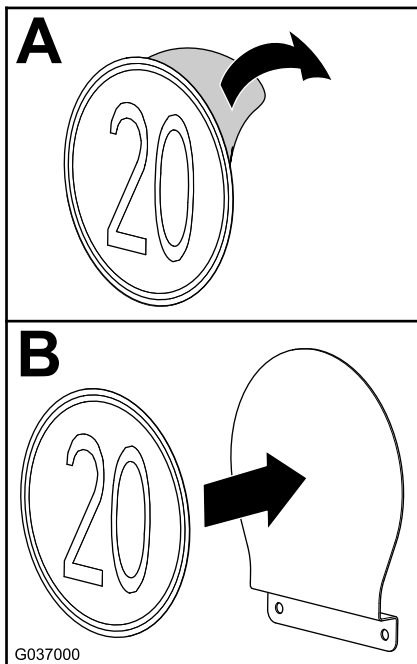


Figure 13

2. Align the decal to the speed sign as shown in B of Figure 13.
3. Press the decal onto the surface of the tank from the top down while removing air bubbles as you apply the decal.
4. Remove the 2 flange locknuts (5/16 inch) that secure the bracket for the lift-cylinder manifold to the lift-cylinder mount (Figure 14).

Note: Do not remove the 2 flange-head bolts (5/16 x 1 inch)

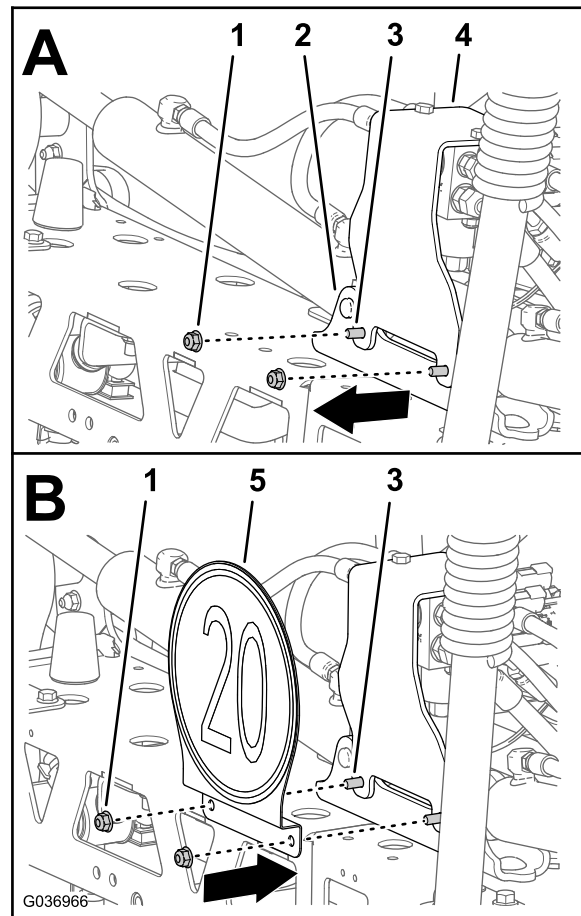


Figure 14

- | | |
|-------------------------------------|-------------------------------------|
| 1. Flange locknuts (5/16 inch) | 4. Bracket (lift-cylinder manifold) |
| 2. Lift-cylinder mount | 5. Speed sign |
| 3. Flange-head bolt (5/16 x 1 inch) | |
-
5. Assemble the speed sign to the 2 flange-head bolts (5/16 x 1 inch) with the 2 flange locknuts (5/16 inch) that you removed in step 4.
 6. Torque the nuts and bolts to 198 to 254 N·m (175 to 225 in-lb).

Installing the License Plate Brackets

1. Assemble the license-plate bracket to the support bracket with the 2 flange-head bolts (5/16 x 3/4 inch) and 2 flange locknuts (5/16 inch) as shown in [Figure 15](#).

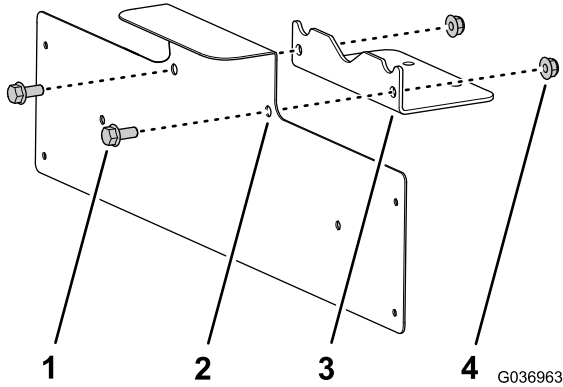


Figure 15

- | | |
|--|--------------------------------|
| 1. Flange-head bolts (5/16 x 3/4 inch) | 3. Support bracket |
| 2. License-plate bracket | 4. Flange locknuts (5/16 inch) |

2. Align the holes in the support bracket with the holes in the frame of the center-boom section (A of [Figure 16](#)).

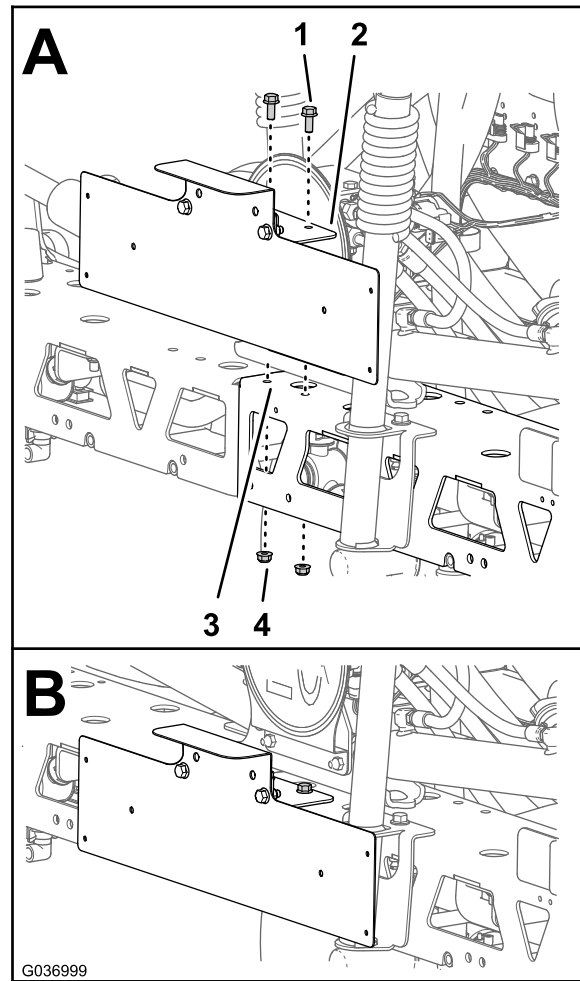


Figure 16

- | | |
|--|--------------------------------|
| 1. Flange-head bolts (5/16 x 3/4 inch) | 3. Frame (center-boom section) |
| 2. Support bracket | 4. Flange locknuts (5/16 inch) |

3. Assemble the support bracket to the center-boom section (B of [Figure 16](#)) with 2 flange-head bolts (5/16 x 3/4 inch) and 2 flange locknuts (5/16 inch).

5

Installing the Data Plate For Machines Operated In Germany

Parts needed for this procedure:

1	Data plate
4	Rivet (5 x 10 mm)

Procedure

1. At the forward end of the right platform channel, measure 51 mm (2 inches) rearward and mark the channel (Figure 17).

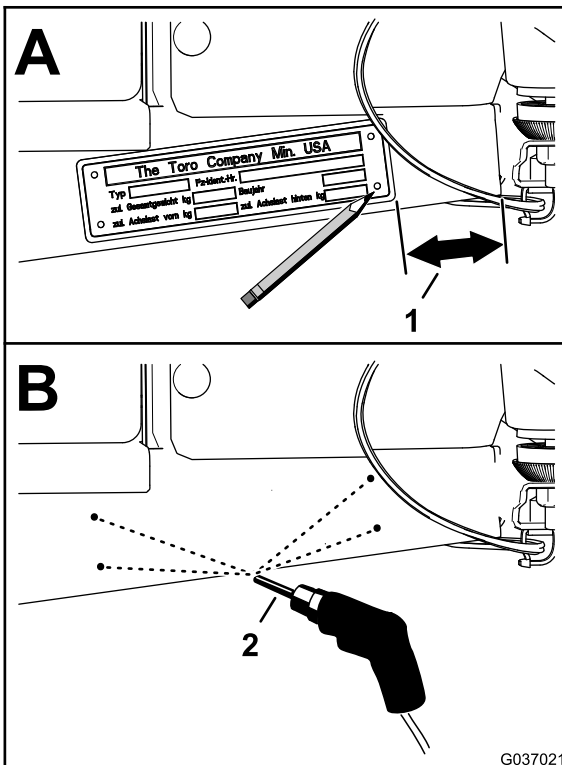
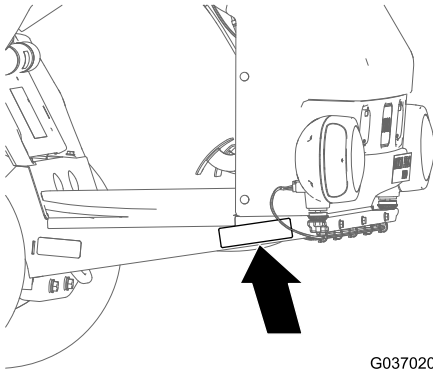


Figure 17

2. Align the data plate to the platform channel as shown in Figure 17 and mark the 4 hole locations.
3. Centerpunch the platform channel at the 4 marks (Figure 17).
4. Drill 4 holes 3 mm (1/8 inch) through the channel at the centerpunch marks (Figure 17).
5. Rivet the data plate to the platform channel (Figure 18).

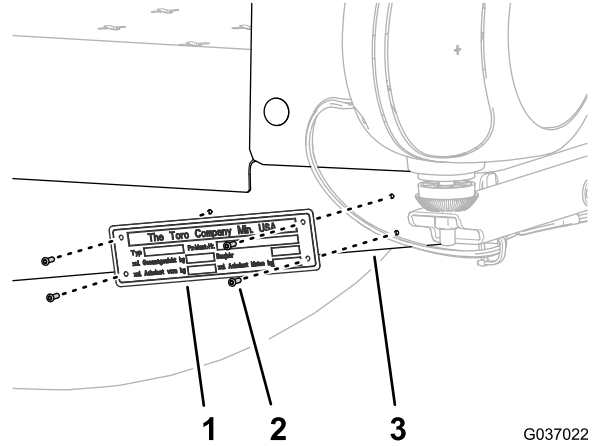


Figure 18

1. Data plate
2. Rivet
3. Right platform channel

6

Installing the Turn-Signal Switch

Parts needed for this procedure:

1	Turn-signal switch
1	Hose clamp

Procedure

1. Align the turn-signal switch with the steering-wheel valve.
- Note:** The orientation of the turn-signal switch will vary if the foam marker is installed.
2. Place the hose clamp over the steering-wheel valve, and insert the hose clamp through the opening on the turn-signal switch (Figure 19).
 3. Secure the turn-signal switch to the steering column with the hose clamp (Figure 19).

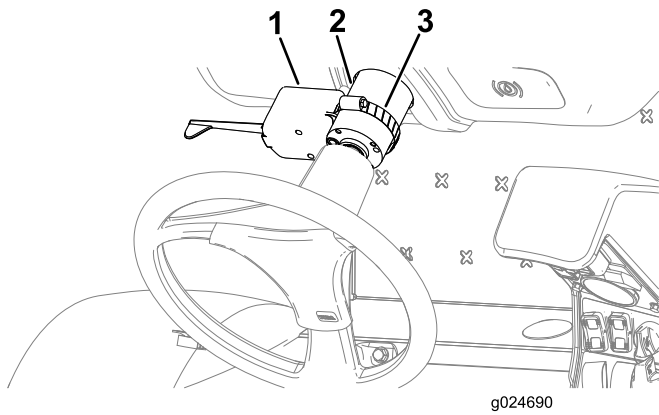


Figure 19

1. Turn-signal switch
2. Steering-wheel valve
3. Hose clamp

2. Rotate the 90° bracket as shown in [Figure 20](#) and loosely secure it to the mounting stud of the horn assembly with the nut that you removed in step 1.
- Note:** You will tighten the nut of the horn assembly in a later procedure.
3. Align the hole in the short leg of the 90° bracket with the hole in the rear-platform channel ([Figure 21](#)).
 4. Assemble the 90° bracket to the platform channel with the flange-head screw (5/16 x 3/4 inch) and the flange locknut (5/16) as shown in [Figure 21](#).

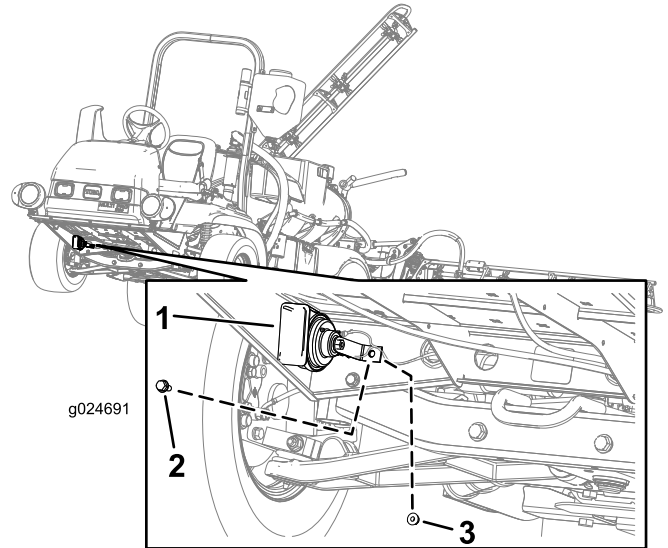


Figure 21

1. Horn assembly
2. Flange-head screw (5/16 x 3/4 inch)
3. Flange locknut (5/16)

7

Installing the Horn

Parts needed for this procedure:

1	Horn assembly
1	90° bracket
1	Flange-head screw (5/16 x 3/4 inch)
1	Flange locknut (5/16)

Procedure

1. Remove the nut and 90° bracket from the horn assembly ([Figure 20](#)).

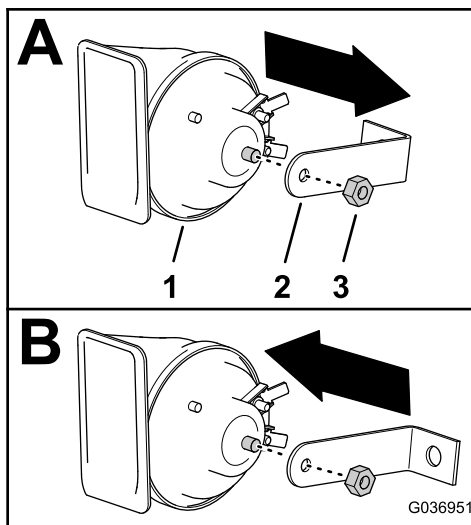


Figure 20

1. Horn
2. 90° bracket
3. Nut

5. Torque the flange-head screw and flange locknut to 198 to 254-N·m(175 to 225 in-lb).

8

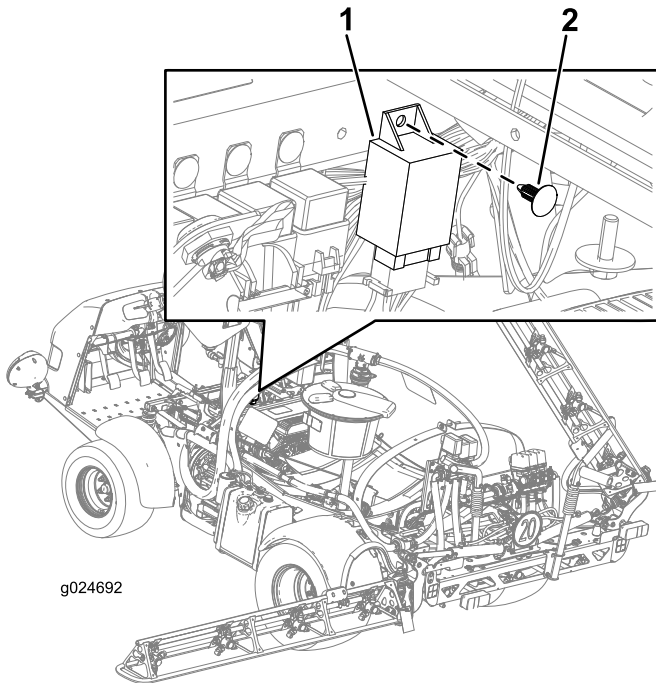
Installing the Flasher Module and the Main-Block Fuse

Parts needed for this procedure:

1	Flasher module
1	Push-in fastener
1	Fuse (15 A)

Installing the Flasher Module

1. Align the flasher module with the hole in the frame of the machine (Figure 22).
2. Insert the push-in fastener through the hole in the flasher module and the frame of the machine (Figure 22).



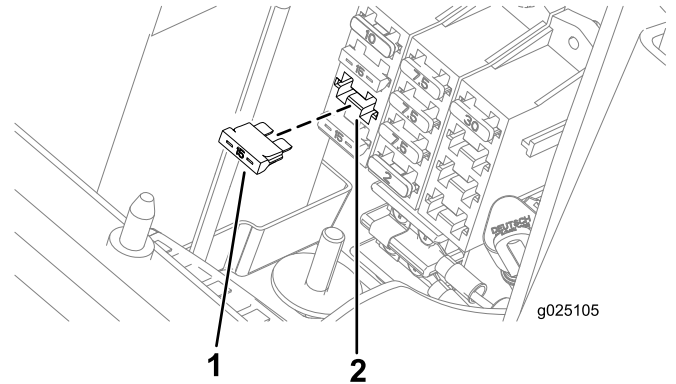
g024692

Figure 22

1. Flasher module
2. Push-in fastener

Installing the Main-Block Fuse

Insert the fuse into the main-block frame (Figure 23).



g025105

Figure 23

1. Fuse (15 A)
2. Main-block frame

9

Routing and Installing the Wire Harness to the Machine

Parts needed for this procedure:

1	Wire harness
6	Cable tie

Preparing to Route the Wire Harness

Use the following graphic for an outline of routing the wire harness to the machine ([Figure 24](#)).

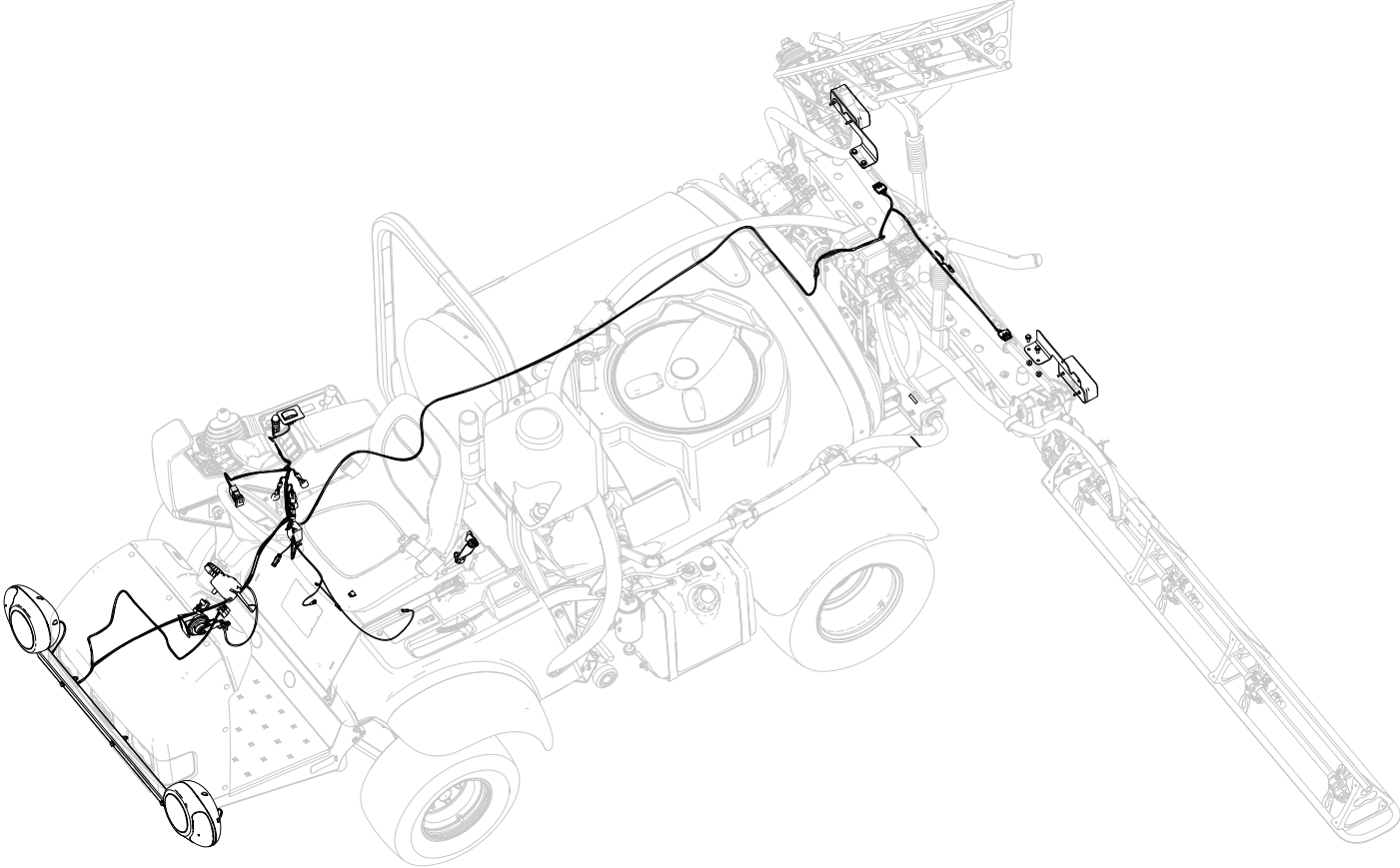


Figure 24

Routing the Wire Harness to the Side Console

1. Route the harness through the front of the seat shroud (Figure 25).

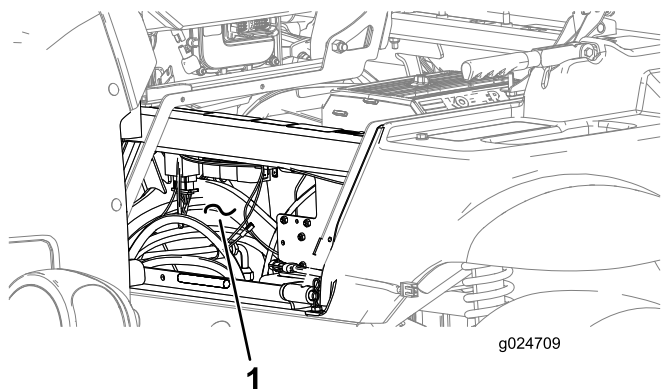


Figure 25

1. Opening in the front of the seat shroud

2. Route the harness to the side console (Figure 26).

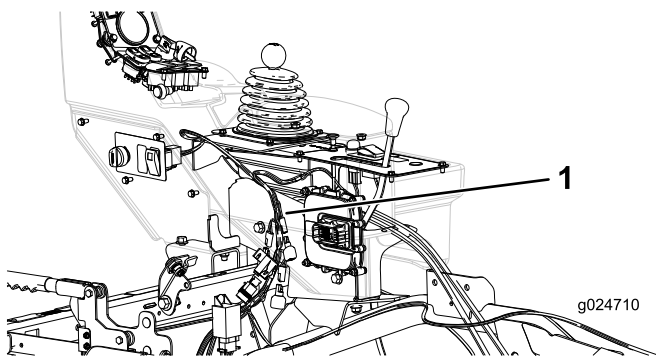


Figure 26

1. Harness

Routing the Wire Harness to the Battery

1. Route the harness to the left from the side console to the flasher module.
2. Route the harness leg with the ring terminal to the positive post of the battery (Figure 27).

Note: Connect the harness leg with the ring terminal to the positive post of the battery just before installing the seat shroud and seat.

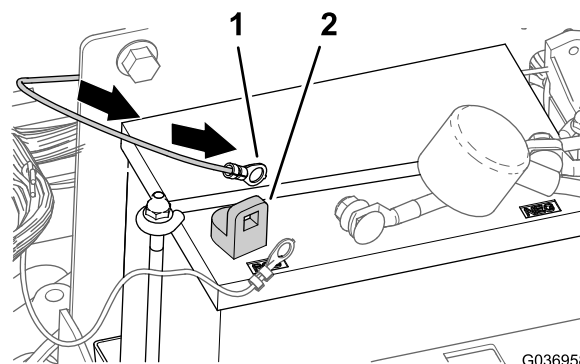


Figure 27

1. Ring terminal
2. Positive (+) battery post

Routing the Wire Harness to the Turn-Signal

1. Remove the 2 bolts that secure the hose cover to the machine and remove the hose cover (Figure 28).

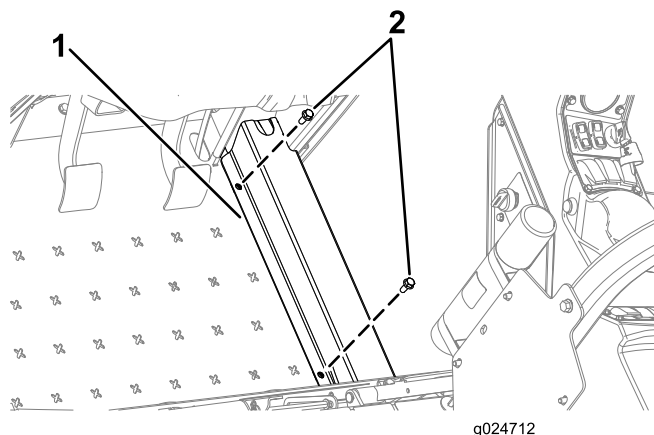


Figure 28

1. Hose cover
2. Bolts

2. Route the wire harness forward and along the hoses toward the headlights, the turn-signal switch, and the horn.
3. Connect the leg of the wire harness with the 8-socket connector to the 8-pin connector of the turn-signal switch (Figure 29).

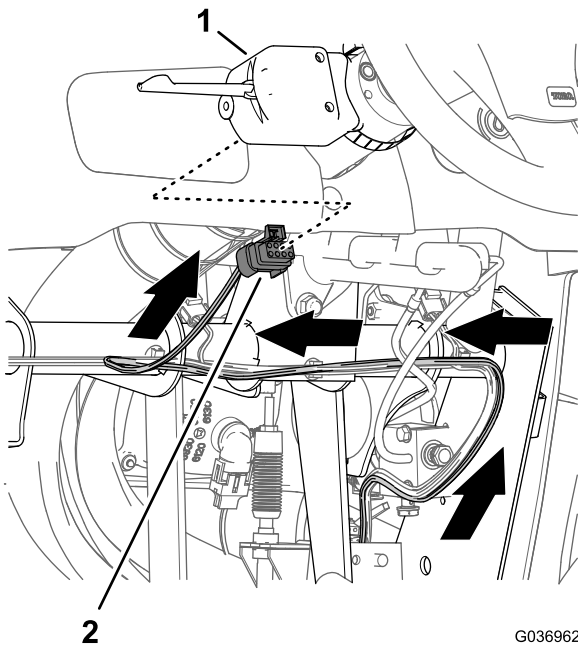


Figure 29

1. Turn-signal switch
2. 8-socket connector

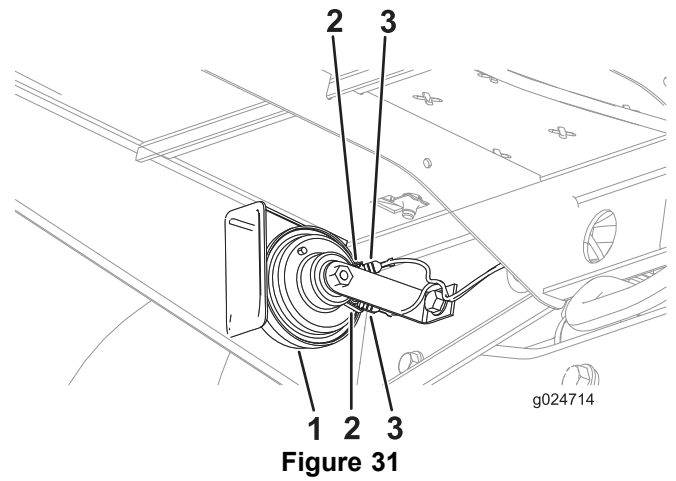


Figure 31

1. Horn
2. Terminal of the horn
3. Terminal of the wire-harness leg

3. Tighten by hand the nut that secures the horn to the 90° bracket; refer to [Figure 20](#) in [7 Installing the Horn](#) (page 11).

Routing the Wire Harness to the Horn

1. Route the wire harness through the grommet at the hole in the rear-angle platform to the horn ([Figure 30](#)).

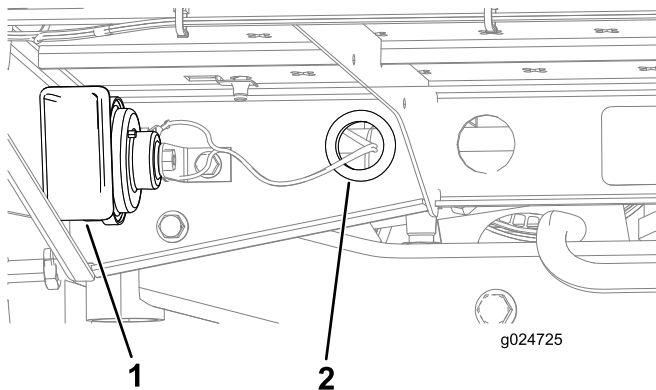


Figure 30

1. Horn
2. Grommet at the hole

2. Connect the wire-harness leg with the 2 terminals to the 2 terminals on the horn ([Figure 31](#)).

Note: Rotate the horn as needed to connect the terminals for the wire harness.

Routing the Wire Harness to the Headlights

1. Route the wire harness along the hoses in the floor-pan opening ([Figure 32](#)).

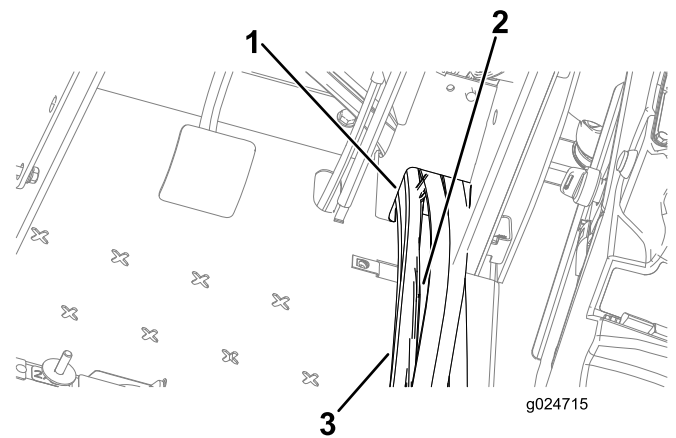


Figure 32

1. Floor-pan opening
2. Wire harness
3. Hoses

2. Route the short leg of the wire harness to the right headlight.
3. Route the long leg of the wire harness to the left headlight.
4. Connect the 6-socket connector of the wire harness to the 6-pin connector of the right headlight ([Figure 33](#)).

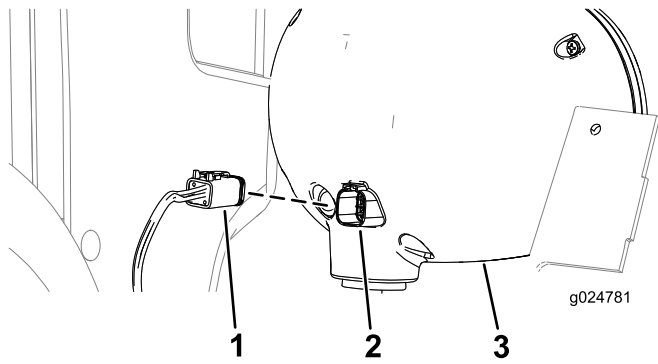


Figure 33

- 1. 6-socket connector
- 2. 6-pin connector
- 3. Right headlight

- 5. Repeat step 4 for the left headlight.
- 6. Assemble the hose cover to the floor of the operator's platform with the 2 bolts that you removed in removed in step 1 of [Routing the Wire Harness to the Turn-Signal](#) (page 14).

Connecting the Wire Harness to the Flasher Module

- 1. Route the harness leg with the 6-socket connector to the 6-blade connector of the flasher module ([Figure 34](#)).

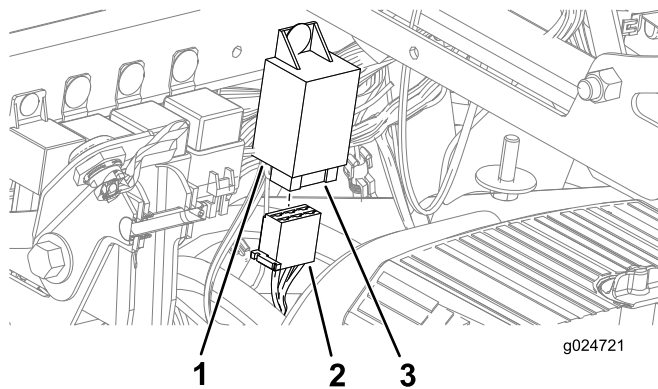


Figure 34

- 1. Flasher module
- 2. 6-socket connector
- 3. 6-blade connector

- 2. Plug the socket connector into the flasher module.

Routing the Wire Harness to the Taillights

- 1. Route the tail light leg of the wire harness from the flasher module rearward along the right-frame tube between the frame tube and the engine ([Figure 35](#)).

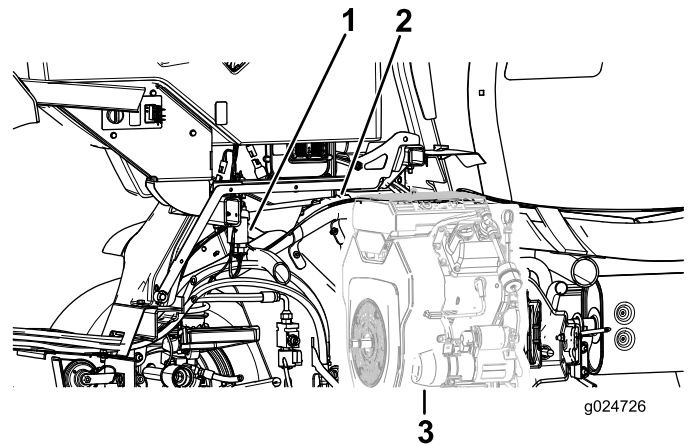


Figure 35

- 1. Flasher module
- 2. Right-frame tube
- 3. Engine

- 2. Route the wire harness along the right-frame channel adjacent to the tank ([Figure 36](#)).

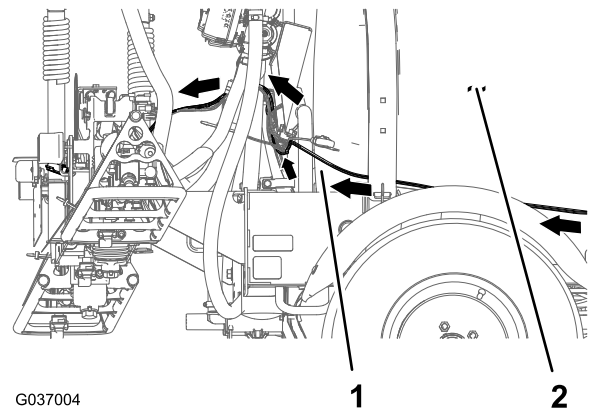


Figure 36

- 1. Wire harness
- 2. Tank

- 3. Route the wire harness across the boom-valve bracket ([Figure 37](#)).

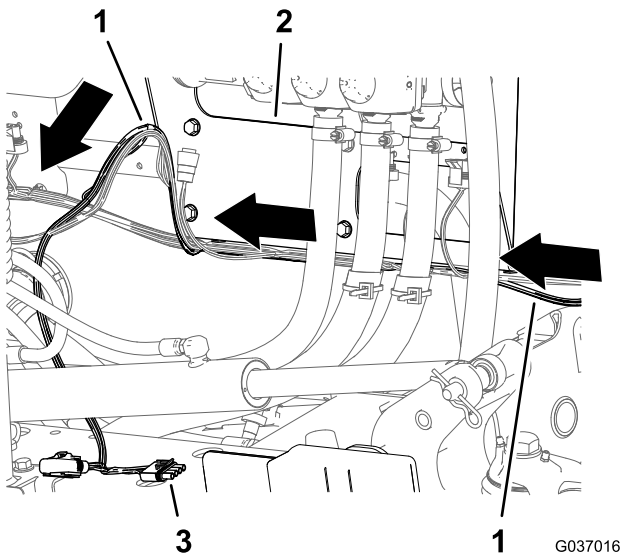


Figure 37

- 1. Wire harness
- 2. Boom-valve bracket
- 3. 4-socket connector (LEFT REAR TURN/BRAKE SIGNAL)

4. Route the wire harness to the left of the flow meter and toward the boom-frame channel (Figure 38).

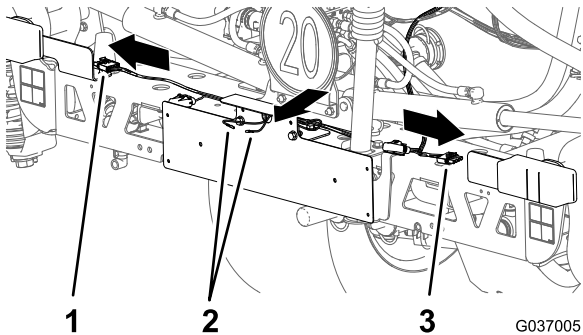


Figure 38

- 1. 4-socket connector (LEFT REAR TURN/BRAKE SIGNAL)
- 2. Bullet connectors (LICENSE LIGHT)
- 3. 4-socket connector (RIGHT REAR TURN/BRAKE SIGNAL)

- 5. Route the 2 bullet connectors labeled LICENSE LIGHT through the 25 mm (1 inch) hole in the license-plate bracket (Figure 38).
- 6. Connect the 4-socket connector of the wire harness to the 4-pin connector of the tail-light lead (Figure 39).

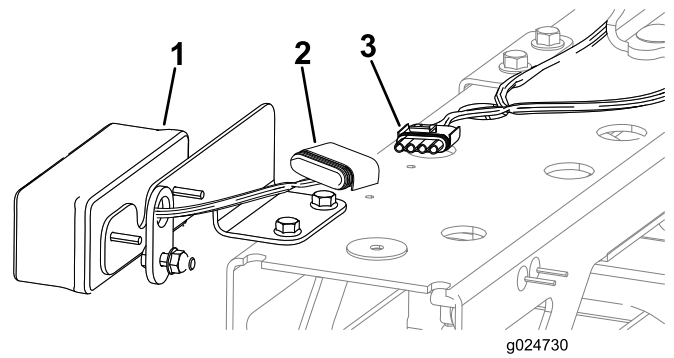


Figure 39

- 1. Tail light
- 2. 4-socket connector
- 3. 4-pin connector

7. Repeat step 6 for the other tail light.

10

Installing the License-Plate Light

Parts needed for this procedure:

1	License-plate light
1	Screw (#10 x 5/8 inch)
2	Locknut (#10)

Procedure

- 1. Insert the 2 bullet connectors labeled LICENSE LIGHT into the 2 sockets of the license-plate light (Figure 40).

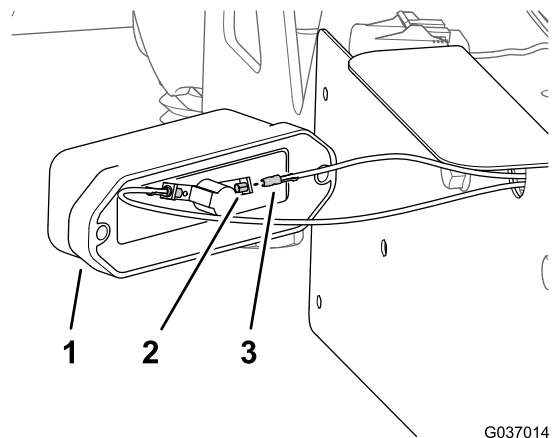


Figure 40

- 1. License-plate light
- 2. Socket
- 3. Bullet connector (labeled LICENSE LIGHT)

- Align the lens for the light down and the holes in the light with the holes in the license-plate bracket (Figure 41).

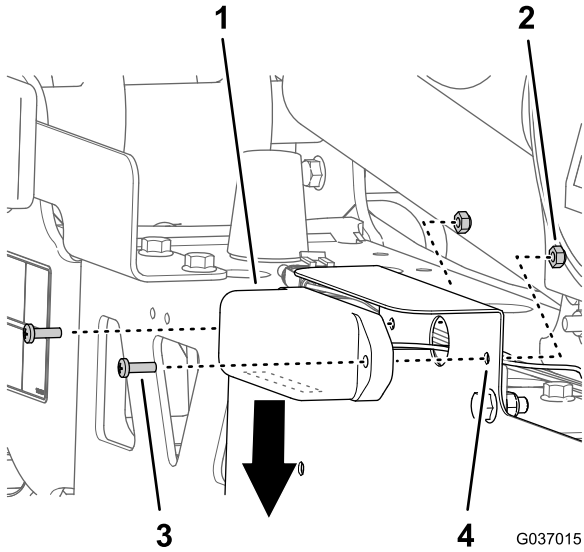


Figure 41

- License-plate light
- Locknut (#10)
- Screw (#10 x 5/8 inch)
- License-plate bracket

- Assemble the light to the bracket (Figure 41) with the 2 screws (#10 x 5/8 inch) and 2 locknuts (#10).

Note: Ensure that the wires are not pinched between the light and the license-plate bracket.

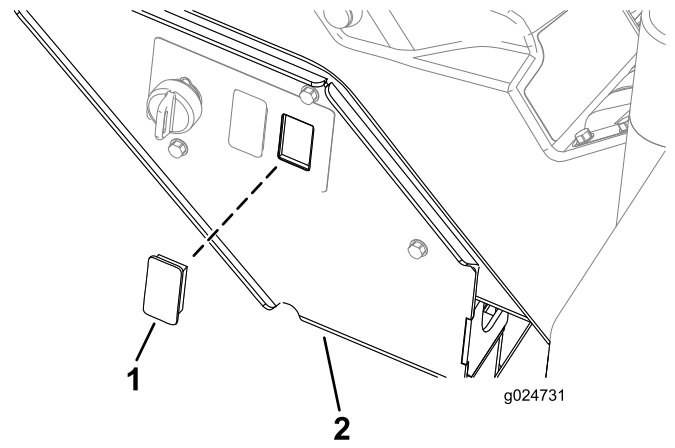


Figure 42

- Hole plug
- Side-console mount

- Route the 8-socket connector of the wire harness through the hole in the side-console mount (Figure 43).

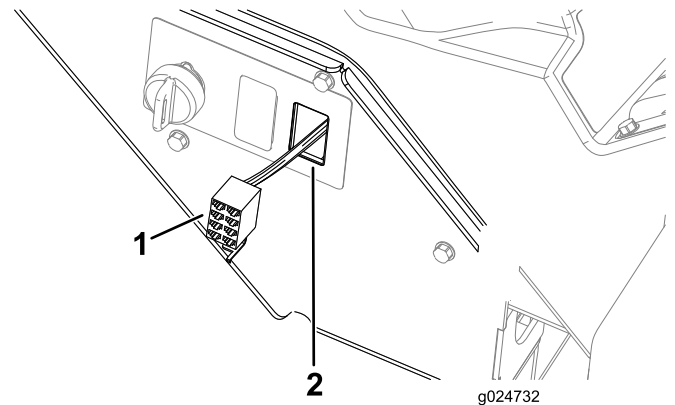


Figure 43

- 8-socket connector
- Hole in the side-console mount

- Connect the 8-socket connector of the wire harness to the 8-blade connector of the hazard switch (Figure 44).

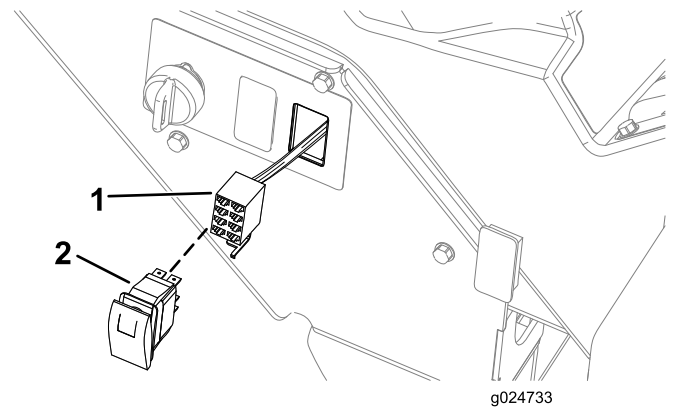


Figure 44

- 8-socket connector
- Hazard switch (8-blade connector)

11

Installing the Hazard Switch

Parts needed for this procedure:

1	Hazard switch
---	---------------

Procedure

- Remove the hole plug for the hazard switch from the control panel on the side-console mount (Figure 42).

12

Installing the Light Switch and the Horn Button

Parts needed for this procedure:

1	Horn switch
1	Button cover
1	3-position switch
1	Light-switch decal (plain)

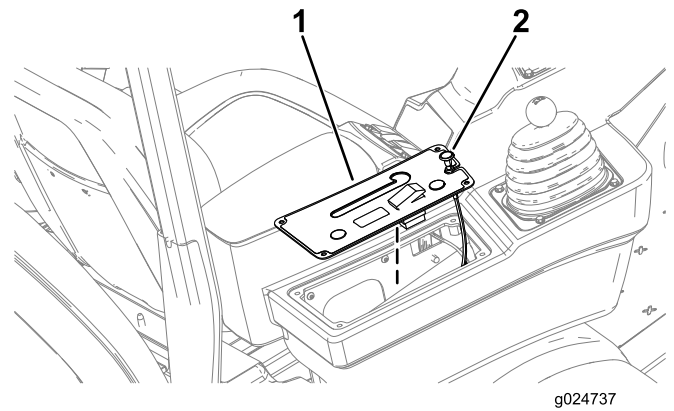


Figure 46

1. Control-panel cover
2. Choke control

Installing the Horn Switch

1. Remove the knob from the differential-lock rod (Figure 45).
2. Remove the 4 hex-head screws (1/4 x 1/2 inch) as shown in Figure 45.

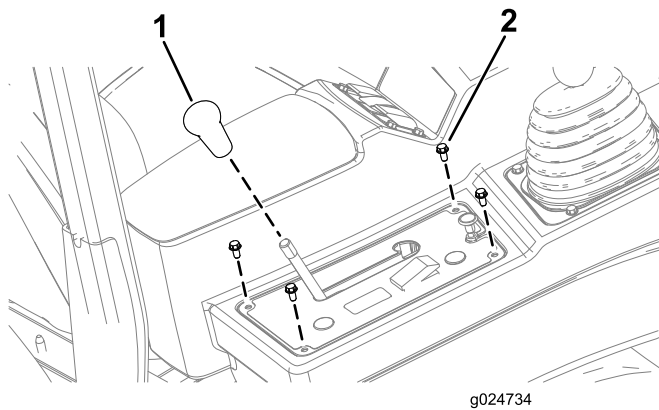


Figure 45

1. Knob
2. Hex-head screw (1/4 x 1/2 inch)

3. Lift the control-panel cover and the choke control (Figure 46).

4. Remove the round plug from the control-panel cover (A of Figure 47).

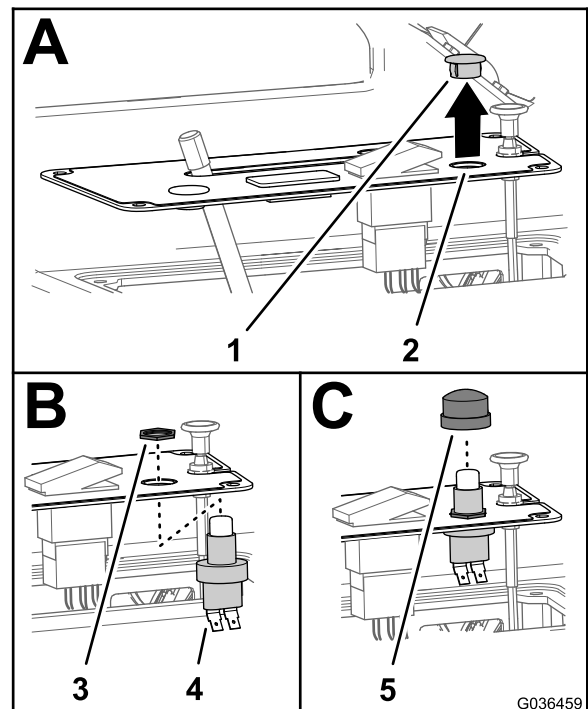
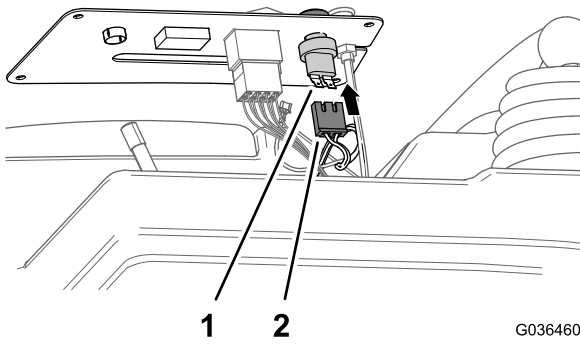


Figure 47

1. Panel plug (round)
2. Control-panel cover
3. Jam-nut (horn switch)
4. Horn switch
5. Button cover

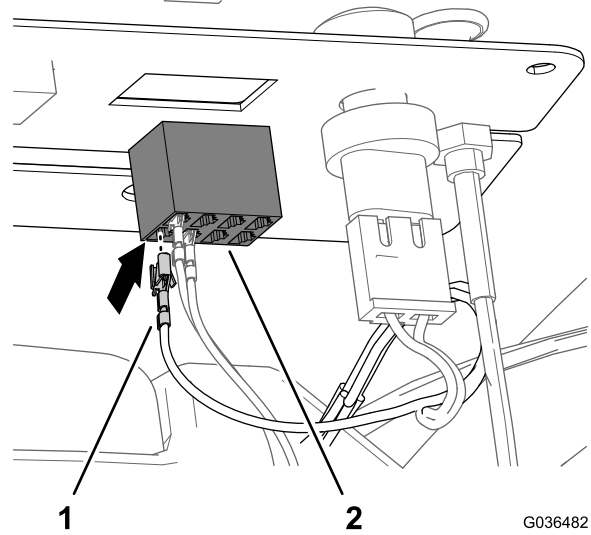
5. Assemble the horn switch to the control-panel cover with the jam nut, and tighten the jam nut by hand (B of Figure 47).
6. Assemble the button cover onto the horn switch (C of Figure 47).
7. Connect the 2-pin socket of the kit harness to the 2-blade connector of the horn switch (Figure 48).



1 2
Figure 48

G036460

1. Horn switch 2. 2-pin connector



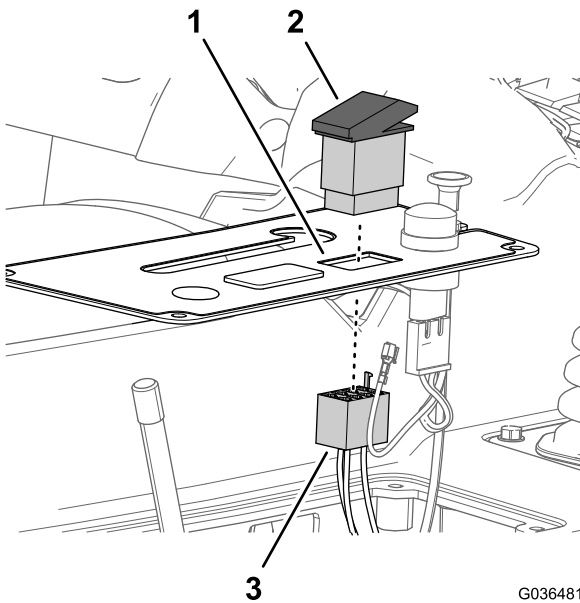
1 2
Figure 50

G036482

1. Socket connector 2. Light-switch connector (slot number 1)

Installing the Light Switch

1. Remove the existing 8-socket connector from the old light switch (Figure 49).



1 2 3
Figure 49

G036481

1. Control-panel cover 3. 8-socket connector
2. Old light switch

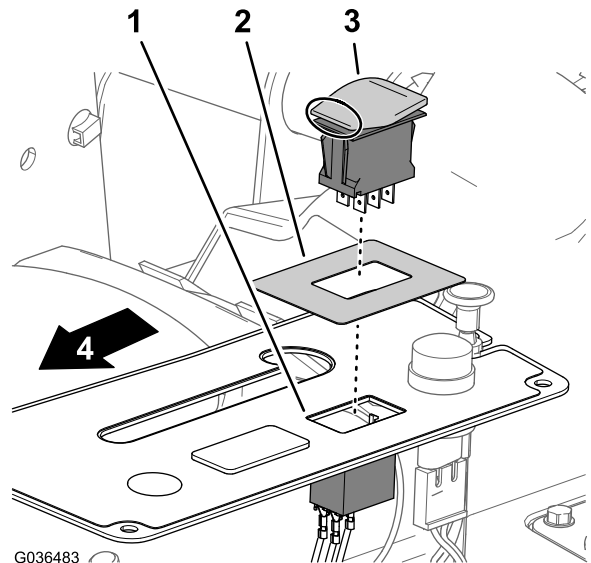
2. Remove the old light switch from the control-panel cover (Figure 49).

Note: You no longer need the old light switch.

3. Insert the 1 socket connector of the kit harness into the slot number 1 of the 8-socket connector of the main harness (Figure 50).

Note: Insert the blade into slot number 1 on the 8-socket connector to ensure that the new light switch works properly.

4. Install the light-switch decal onto the control-panel cover, centered over the light switch opening, with the words SONIC BOOM toward the back of the machine (Figure 51).



1 2 3 4
Figure 51

G036483

1. Control-panel cover 3. 3-position switch (plain)
2. Light-switch decal 4. Back of the machine

5. Insert the plain 3-position switch (without the hazard symbol) into the light switch opening of the control-panel cover with the tail of the switch rearward (Figure 51).
6. Connect the 8-socket connect of the machine harness to the 3-position switch (Figure 52).

13

Connecting the Battery

No Parts Required

Procedure

1. Align the ring terminal for the machine wire harness, ring terminal of the kit wire harness, terminal for the positive battery cable to the positive battery post (Figure 54).

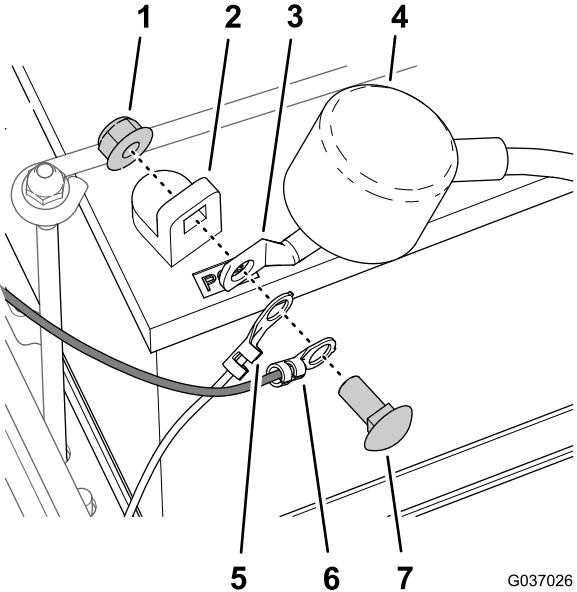


Figure 54

G037026

1. Nut
2. Positive battery post
3. Terminal (positive battery cable)
4. Insulator cover
5. Ring terminal (machine wire harness)
6. Ring terminal (kit wire harness)
7. Bolt

2. Secure the ring terminals and battery terminal to the battery post (Figure 54) with the bolt and nut removed in step 4 of 1 [Preparing the Machine](#) (page 4).
3. Align the insulator cover over the positive battery terminal (Figure 54).

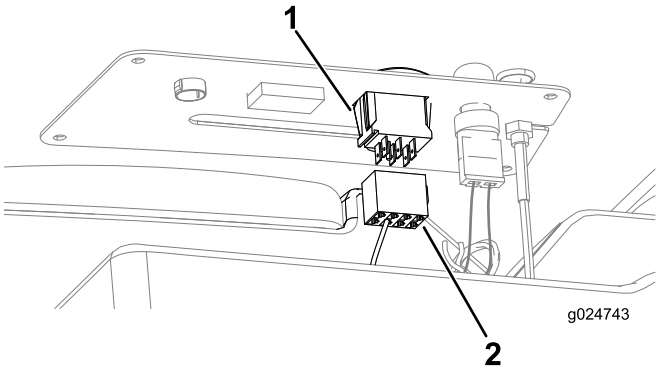


Figure 52

g024743

1. 3-position switch
2. 8-socket connector (with the line in slot number 1)

7. Align the control-panel cover to the side console (Figure 53).

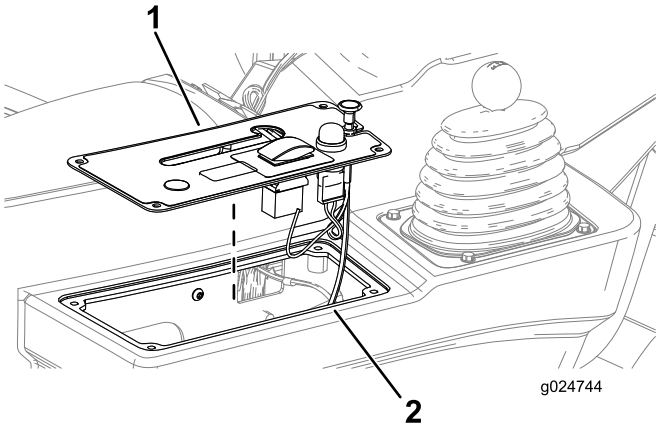


Figure 53

g024744

1. Control-panel cover
2. Side console

8. Secure the control-panel cover to the side console with the 4 hex-head screws (1/4 x 1/2 inch) removed in step 2.
9. Install the knob onto the differential-lock rod (Figure 45).

14

Installing the Seat Lock

Parts needed for this procedure:

1	Lock-mount bracket
1	Latch
1	Grip
1	Hex-head screw (12 x 30 mm)
1	Locknut (12 mm)

Procedure

1. Remove the hairpin from the clevis pin (Figure 55).

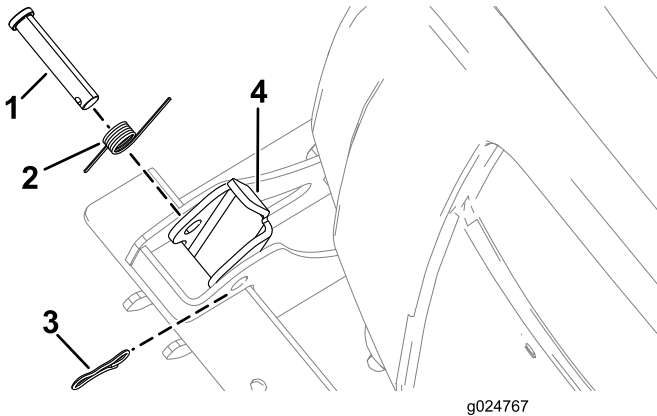


Figure 55

1. Clevis pin
2. Spring
3. Hairpin
4. Latch

2. Remove the clevis pin and spring from the latch (Figure 55).

3. Partially insert the clevis pin through the lock bracket (Figure 56).

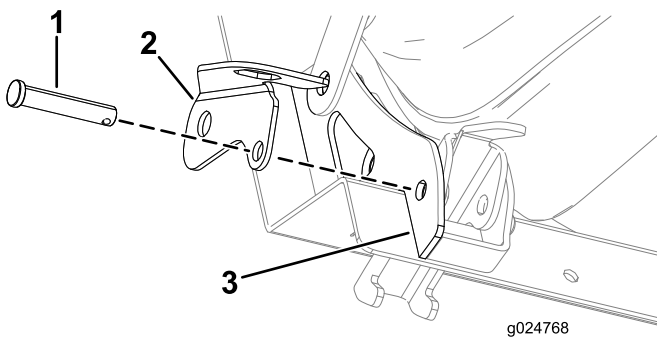


Figure 56

1. Clevis pin
2. Lock bracket
3. Outboard-seat gusset

4. Align the lock bracket and the clevis pin through the hole of the outboard-seat gusset (Figure 56).
5. Align the holes in the latch with the holes in the seat gussets (Figure 57).

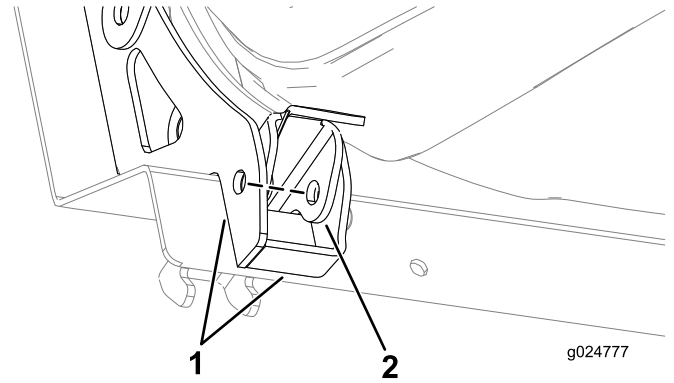


Figure 57

1. Seat gussets
2. Latch

6. Partially move the clevis pin inward through the hole in the seat latch (Figure 58).

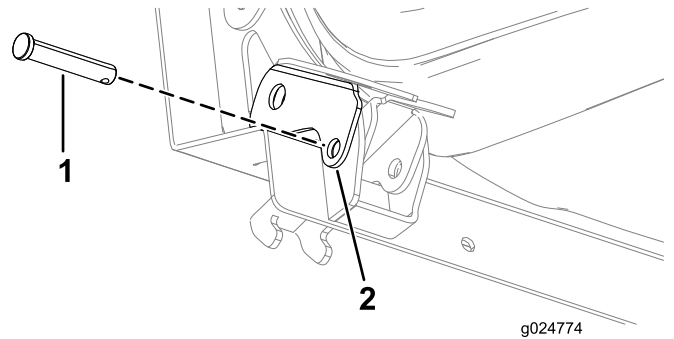


Figure 58

1. Clevis pin
2. Seat latch

7. Install the spring onto the clevis pin (Figure 59).

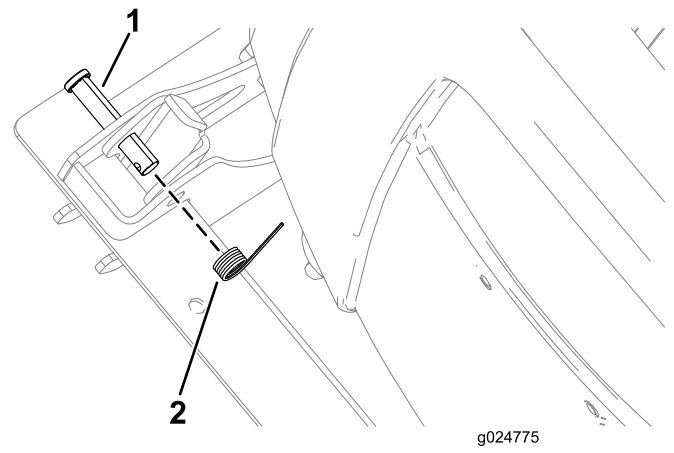


Figure 59

1. Clevis pin
2. Spring

- Fully insert the clevis pin through the holes in the seat latch and the inboard-seat gusset.
- Secure the lock bracket to the outboard-seat gusset with the hex-head screw (12 x 20 mm) and the locknut (12 mm) as shown in [Figure 60](#).

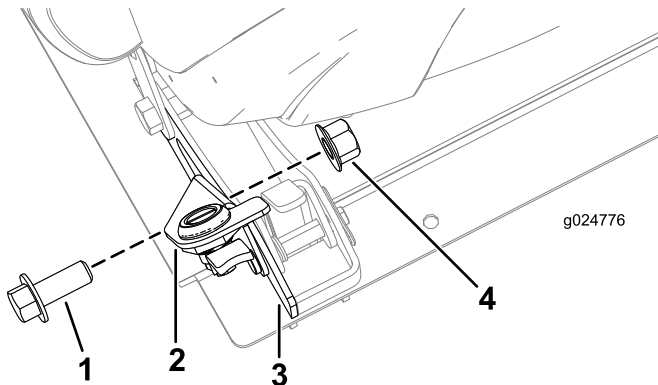


Figure 60

- | | |
|--------------------------------|-------------------------|
| 1. Hex-head screw (12 x 30 mm) | 3. Outboard-seat gusset |
| 2. Lock bracket | 4. Locknut (12 mm) |

15

Installing the Seat

No Parts Required

Procedure

- Ensure that the grip of the lock-mount bracket and the latch is facing up ([Figure 61](#)).

Note: If the grip is not in the right position, put a screw driver into the slot of the latch and rotate the grip upward.

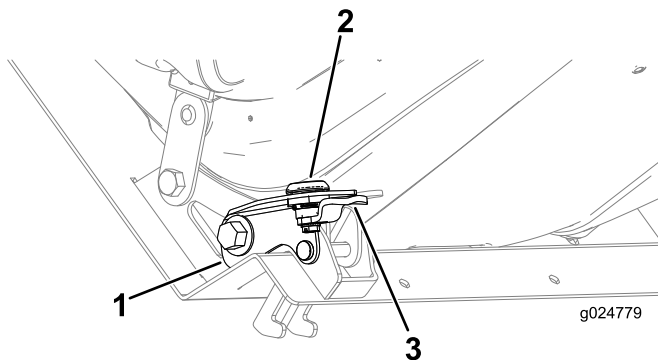


Figure 61

- | | |
|-----------------------|---------|
| 1. Lock-mount bracket | 3. Grip |
| 2. Latch | |

- Align the seat and seat pan with the holes in the machine frame where the seat was removed ([Figure 62](#)).

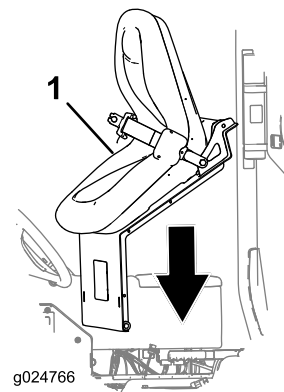


Figure 62

- Seat and seat pan

- Insert the 2 pivot pins that secure the seat and seat pan to the chassis ([Figure 63](#)).

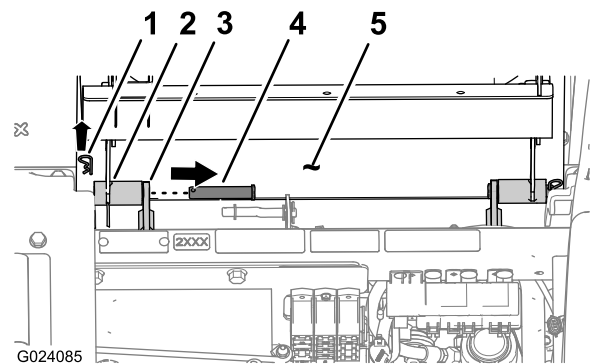


Figure 63

- | | |
|-----------------------------|--------------|
| 1. Hairpin | 4. Pivot pin |
| 2. Pivot fitting (seat pan) | 5. Seat pan |
| 3. Chassis bracket | |

- Insert the 2 hairpins that secure the pivot fitting of the seat pan to the chassis brackets ([Figure 63](#)).
- Connect the electrical connector of the chassis harness to the seat-switch connector ([Figure 64](#)).

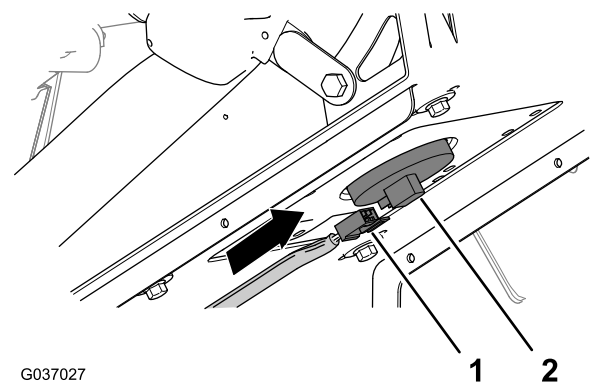


Figure 64

- | | |
|--------------------------------|--------------------------|
| 1. Connector (chassis harness) | 2. Seat-switch connector |
|--------------------------------|--------------------------|

- Lower the seat and latch it to the seat pan.

7. With seat latched, ensure that the grip of the lock-mount bracket is facing down.

Operation

Using the Headlights

Move the light switch on the side console rearward toward the sloped end of the switch to turn the headlights to the ON position (Figure 65).

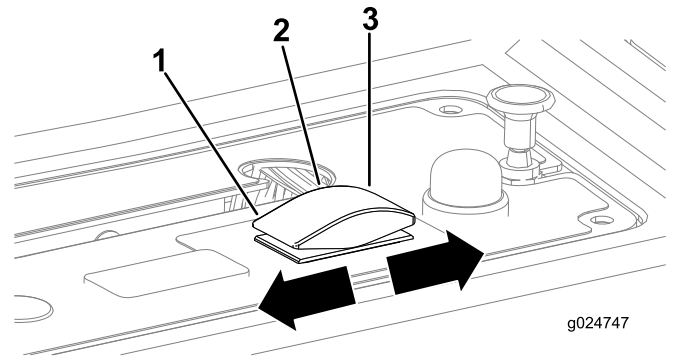


Figure 65

1. HEADLIGHTS ON position (sloped end of the switch)
2. SWITCH OFF position
3. WORKLIGHTS ON position (rounded end of the switch)

Using the Worklights

Move the light switch on the side console forward toward the rounded end of the switch to turn worklights to the ON position (Figure 65).

Using the Hazard Flasher

Move the hazard-flasher switch up to turn the hazard flasher to the ON position (Figure 66).

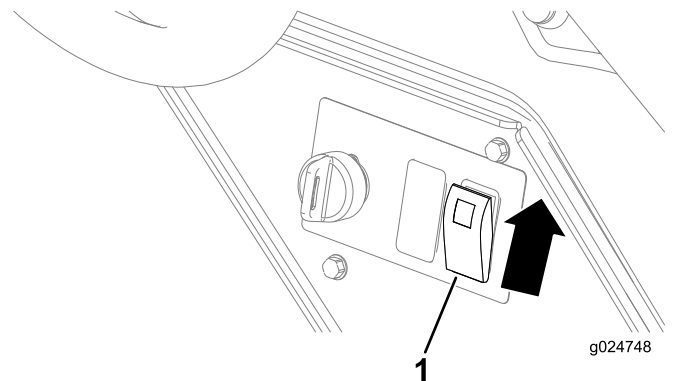


Figure 66

1. Hazard-flasher switch

Using the Horn

Push down on the horn button to sound the horn (Figure 67).

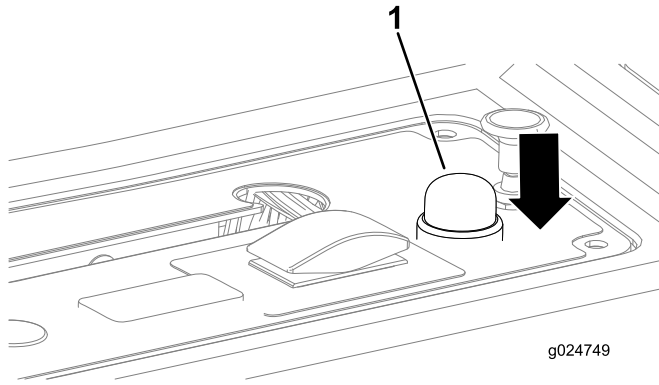


Figure 67

1. Horn button

Using the Turn Signals

Move the turn-signal switch up to indicate a right-turn signal (Figure 68).

Move the turn-signal switch down to indicate a left-turn signal (Figure 68).

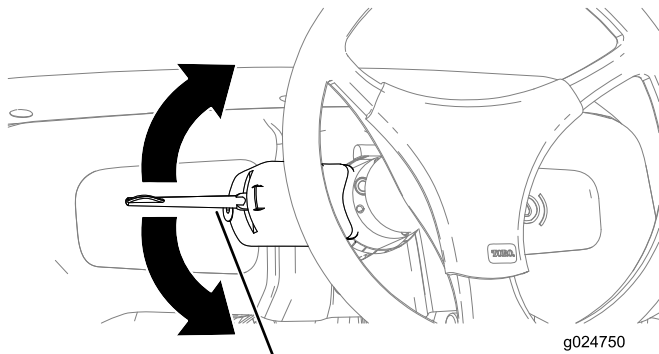


Figure 68

1. Turn-signal switch

Maintenance

Replacing Light Bulbs

Replacing a Headlight Bulb

1. Ensure that the light switch is in the OFF position.
2. Remove the 6 screws securing the headlight (Figure 69).
3. Remove the headlight cover (Figure 69).

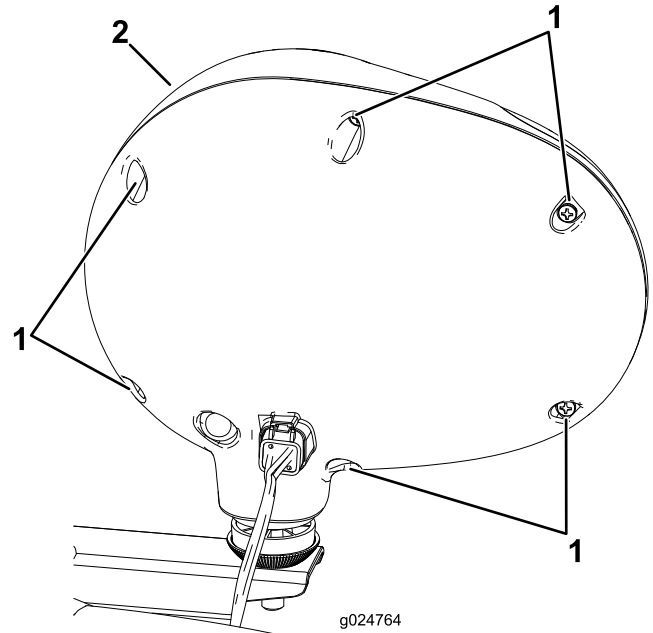


Figure 69

1. Screws
2. Headlight-lamp cover

4. Remove the light bulb with the open circuit across the filament wire.
5. Install the new light bulb.
6. Secure the headlight cover with the 6 screws.

Replacing a Tail-light Bulb

1. Ensure that the light switch is in the OFF position.
2. Remove the 2 screws that secure the cover and lens to the tail-light base.
3. Remove the tail-light cover.
4. Pushing down on the pin on the light bulb, rotate the light bulb to the left, and pull the light bulb out (Figure 70).

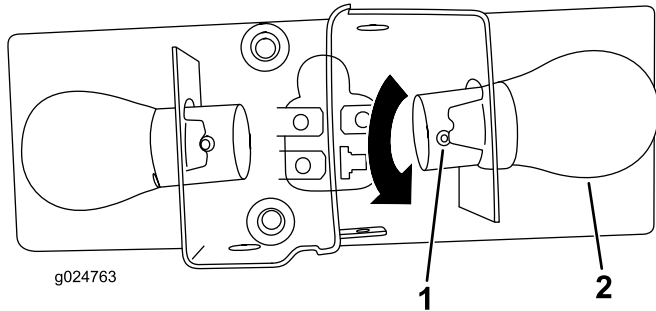


Figure 70

1. Pin
2. Light bulb

5. Insert the new light bulb into the hole where the old light bulb was removed from.
6. Rotate the new light bulb to the right until the pin of bulb aligns with the slot in the light-bulb casing (Figure 70).
7. Install the tail-light cover with the 2 screws.

Replacing a License Plate Bulb

1. Remove the 2 screws that secure the cover to the base of the license-plate light, and remove the cover (A of Figure 71).

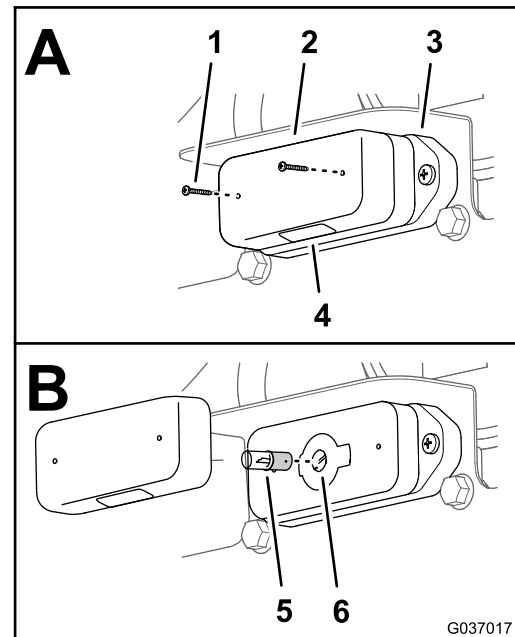


Figure 71

1. Screw
2. Cover
3. Light base
4. Lens
5. Bulb
6. Light socket

2. Push down the bulb slightly and rotate it counterclockwise until it is unlocked from the light socket, and remove the bulb (B of Figure 71).
3. Insert the new light bulb into the bulb socket (B of Figure 71).
4. Press down the bulb slightly and rotate it clockwise until the bulb locks into the socket (B of Figure 71).
5. Align the cover to the base of the license-plate light with the lens down (A of Figure 71).
6. Secure the lens to the base with the 2 screws that you removed in step 1.

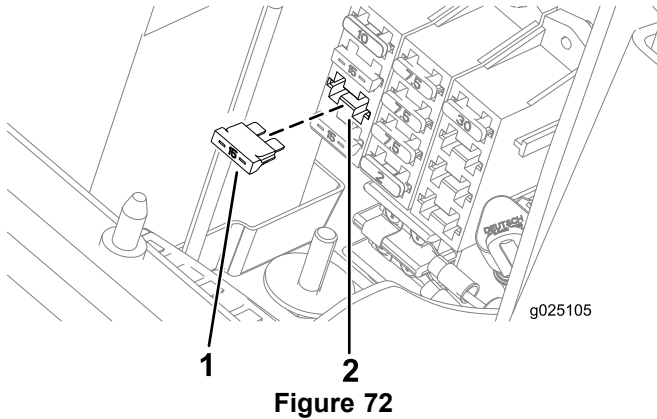
Replacing Fuses

Replacing Fuse Block Fuse

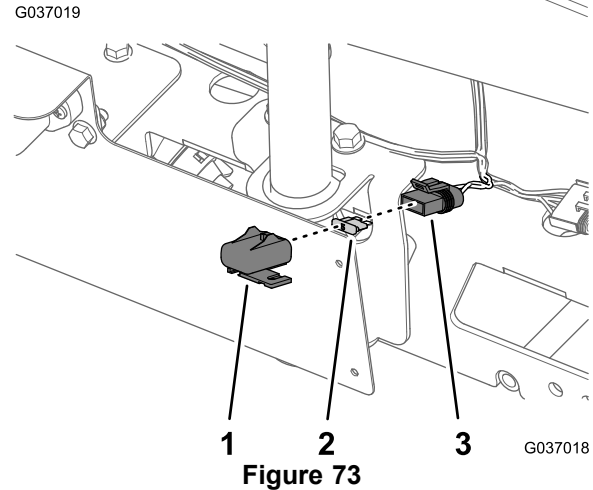
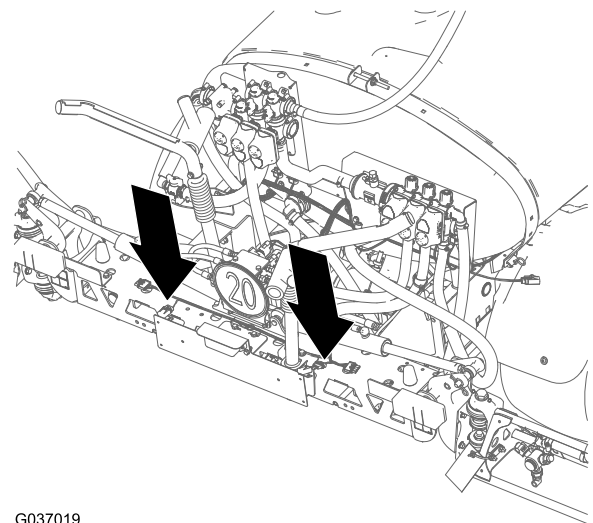
The electrical system is protected by fuses, and requires no maintenance. If a fuse blows, check the component or circuit for a malfunction or short.

1. Pull out the open fuse.
2. Replace the open fuse with a new fuse (Figure 72).

Note: Ensure that the correct-size fuse is installed.



1. Fuse
2. Fuse slot



1. Cover
2. Fuse
3. Fuse socket

Replacing the Tail-light Fuse

Note: Your machine has separate fuses for the left and right taillights.

1. Remove the cover from the fuse socket (Figure 73).

2. Remove the open fuse (Figure 73).
3. Insert the new fuse into the socket until the fuse is fully seated (Figure 73).

Note: Use only a fuse that is rated for the same current load as the fuse that you are replacing.

4. Assemble the cover onto the fuse socket (Figure 73).

Notes:

Notes:

Notes:

International Distributor List

Distributor:	Country:	Phone Number:	Distributor:	Country:	Phone Number:
Agrolanc Kft	Hungary	36 27 539 640	Maquiver S.A.	Colombia	57 1 236 4079
Asian American Industrial (AAI)	Hong Kong	852 2497 7804	Maruyama Mfg. Co. Inc.	Japan	81 3 3252 2285
B-Ray Corporation	Korea	82 32 551 2076	Mountfield a.s.	Czech Republic	420 255 704 220
Brisa Goods LLC	Mexico	1 210 495 2417	Mountfield a.s.	Slovakia	420 255 704 220
Casco Sales Company	Puerto Rico	787 788 8383	Munditol S.A.	Argentina	54 11 4 821 9999
Ceres S.A.	Costa Rica	506 239 1138	Norma Garden	Russia	7 495 411 61 20
CSSC Turf Equipment (pvt) Ltd.	Sri Lanka	94 11 2746100	Oslinger Turf Equipment SA	Ecuador	593 4 239 6970
Cyril Johnston & Co.	Northern Ireland	44 2890 813 121	Oy Hako Ground and Garden Ab	Finland	358 987 00733
Cyril Johnston & Co.	Republic of Ireland	44 2890 813 121	Parkland Products Ltd.	New Zealand	64 3 34 93760
Fat Dragon	China	886 10 80841322	Perfetto	Poland	48 61 8 208 416
Femco S.A.	Guatemala	502 442 3277	Pratoverde SRL.	Italy	39 049 9128 128
FIVEMANS New-Tech Co., Ltd	China	86-10-6381 6136	Prochaska & Cie	Austria	43 1 278 5100
ForGarder OU	Estonia	372 384 6060	RT Cohen 2004 Ltd.	Israel	972 986 17979
G.Y.K. Company Ltd.	Japan	81 726 325 861	Riversa	Spain	34 9 52 83 7500
Geomechaniki of Athens	Greece	30 10 935 0054	Lely Turfcare	Denmark	45 66 109 200
Golf international Turizm	Turkey	90 216 336 5993	Lely (U.K.) Limited	United Kingdom	44 1480 226 800
Hako Ground and Garden	Sweden	46 35 10 0000	Solvart S.A.S.	France	33 1 30 81 77 00
Hako Ground and Garden	Norway	47 22 90 7760	Spypros Stavrinides Limited	Cyprus	357 22 434131
Hayter Limited (U.K.)	United Kingdom	44 1279 723 444	Surge Systems India Limited	India	91 1 292299901
Hydroturf Int. Co Dubai	United Arab Emirates	97 14 347 9479	T-Markt Logistics Ltd.	Hungary	36 26 525 500
Hydroturf Egypt LLC	Egypt	202 519 4308	Toro Australia	Australia	61 3 9580 7355
Irrimac	Portugal	351 21 238 8260	Toro Europe NV	Belgium	32 14 562 960
Irrigation Products Int'l Pvt Ltd.	India	0091 44 2449 4387	Valtech	Morocco	212 5 3766 3636
Jean Heybroek b.v.	Netherlands	31 30 639 4611	Victus Emak	Poland	48 61 823 8369

European Privacy Notice

The Information Toro Collects

Toro Warranty Company (Toro) respects your privacy. In order to process your warranty claim and contact you in the event of a product recall, we ask you to share certain personal information with us, either directly or through your local Toro company or dealer.

The Toro warranty system is hosted on servers located within the United States where privacy law may not provide the same protection as applies in your country.

BY SHARING YOUR PERSONAL INFORMATION WITH US, YOU ARE CONSENTING TO THE PROCESSING OF YOUR PERSONAL INFORMATION AS DESCRIBED IN THIS PRIVACY NOTICE.

The Way Toro Uses Information

Toro may use your personal information to process warranty claims, to contact you in the event of a product recall and for any other purpose which we tell you about. Toro may share your information with Toro's affiliates, dealers or other business partners in connection with any of these activities. We will not sell your personal information to any other company. We reserve the right to disclose personal information in order to comply with applicable laws and with requests by the appropriate authorities, to operate our systems properly or for our own protection or that of other users.

Retention of your Personal Information

We will keep your personal information as long as we need it for the purposes for which it was originally collected or for other legitimate purposes (such as regulatory compliance), or as required by applicable law.

Toro's Commitment to Security of Your Personal Information

We take reasonable precautions in order to protect the security of your personal information. We also take steps to maintain the accuracy and current status of personal information.

Access and Correction of your Personal Information

If you would like to review or correct your personal information, please contact us by email at legal@toro.com.

Australian Consumer Law

Australian customers will find details relating to the Australian Consumer Law either inside the box or at your local Toro Dealer.



The Toro Warranty

A Two-Year Limited Warranty

Conditions and Products Covered

The Toro Company and its affiliate, Toro Warranty Company, pursuant to an agreement between them, jointly warrant your Toro Commercial product ("Product") to be free from defects in materials or workmanship for two years or 1500 operational hours*, whichever occurs first. This warranty is applicable to all products with the exception of Aerators (refer to separate warranty statements for these products). Where a warrantable condition exists, we will repair the Product at no cost to you including diagnostics, labor, parts, and transportation. This warranty begins on the date the Product is delivered to the original retail purchaser.

* Product equipped with an hour meter.

Instructions for Obtaining Warranty Service

You are responsible for notifying the Commercial Products Distributor or Authorized Commercial Products Dealer from whom you purchased the Product as soon as you believe a warrantable condition exists. If you need help locating a Commercial Products Distributor or Authorized Dealer, or if you have questions regarding your warranty rights or responsibilities, you may contact us at:

Toro Commercial Products Service Department
Toro Warranty Company
8111 Lyndale Avenue South
Bloomington, MN 55420-1196
952-888-8801 or 800-952-2740
E-mail: commercial.warranty@toro.com

Owner Responsibilities

As the Product owner, you are responsible for required maintenance and adjustments stated in your *Operator's Manual*. Failure to perform required maintenance and adjustments can be grounds for disallowing a warranty claim.

Items and Conditions Not Covered

Not all product failures or malfunctions that occur during the warranty period are defects in materials or workmanship. This warranty does not cover the following:

- Product failures which result from the use of non-Toro replacement parts, or from installation and use of add-on, or modified non-Toro branded accessories and products. A separate warranty may be provided by the manufacturer of these items.
- Product failures which result from failure to perform recommended maintenance and/or adjustments. Failure to properly maintain your Toro product per the Recommended Maintenance listed in the *Operator's Manual* can result in claims for warranty being denied.
- Product failures which result from operating the Product in an abusive, negligent, or reckless manner.
- Parts subject to consumption through use unless found to be defective. Examples of parts which are consumed, or used up, during normal Product operation include, but are not limited to, brake pads and linings, clutch linings, blades, reels, rollers and bearings (sealed or greasable), bed knives, spark plugs, castor wheels and bearings, tires, filters, belts, and certain sprayer components such as diaphragms, nozzles, and check valves, etc.
- Failures caused by outside influence. Conditions considered to be outside influence include, but are not limited to, weather, storage practices, contamination, use of unapproved fuels, coolants, lubricants, additives, fertilizers, water, or chemicals, etc.
- Failure or performance issues due to the use of fuels (e.g. gasoline, diesel, or biodiesel) that do not conform to their respective industry standards.

Countries Other than the United States or Canada

Customers who have purchased Toro products exported from the United States or Canada should contact their Toro Distributor (Dealer) to obtain guarantee policies for your country, province, or state. If for any reason you are dissatisfied with your Distributor's service or have difficulty obtaining guarantee information, contact the Toro importer.

- Normal noise, vibration, wear and tear, and deterioration.
- Normal "wear and tear" includes, but is not limited to, damage to seats due to wear or abrasion, worn painted surfaces, scratched decals or windows, etc.

Parts

Parts scheduled for replacement as required maintenance are warranted for the period of time up to the scheduled replacement time for that part. Parts replaced under this warranty are covered for the duration of the original product warranty and become the property of Toro. Toro will make the final decision whether to repair any existing part or assembly or replace it. Toro may use remanufactured parts for warranty repairs.

Deep Cycle and Lithium-Ion Battery Warranty:

Deep cycle and Lithium-Ion batteries have a specified total number of kilowatt-hours they can deliver during their lifetime. Operating, recharging, and maintenance techniques can extend or reduce total battery life. As the batteries in this product are consumed, the amount of useful work between charging intervals will slowly decrease until the battery is completely worn out. Replacement of worn out batteries, due to normal consumption, is the responsibility of the product owner. Battery replacement may be required during the normal product warranty period at owner's expense. Note: (Lithium-Ion battery only): A Lithium-Ion battery has a part only prorated warranty beginning year 3 through year 5 based on the time in service and kilowatt hours used. Refer to the *Operator's Manual* for additional information.

Maintenance is at Owner's Expense

Engine tune-up, lubrication, cleaning and polishing, replacement of filters, coolant, and completing recommended maintenance are some of the normal services Toro products require that are at the owner's expense.

General Conditions

Repair by an Authorized Toro Distributor or Dealer is your sole remedy under this warranty.

Neither The Toro Company nor Toro Warranty Company is liable for indirect, incidental or consequential damages in connection with the use of the Toro Products covered by this warranty, including any cost or expense of providing substitute equipment or service during reasonable periods of malfunction or non-use pending completion of repairs under this warranty. Except for the Emissions warranty referenced below, if applicable, there is no other express warranty. All implied warranties of merchantability and fitness for use are limited to the duration of this express warranty.

Some states do not allow exclusions of incidental or consequential damages, or limitations on how long an implied warranty lasts, so the above exclusions and limitations may not apply to you. This warranty gives you specific legal rights, and you may also have other rights which vary from state to state.

Note regarding engine warranty:

The Emissions Control System on your Product may be covered by a separate warranty meeting requirements established by the U.S. Environmental Protection Agency (EPA) and/or the California Air Resources Board (CARB). The hour limitations set forth above do not apply to the Emissions Control System Warranty. Refer to the Engine Emission Control Warranty Statement supplied with your product or contained in the engine manufacturer's documentation for details.