



Count on it.

Parts Catalog

**76cm TurfMaster Walk-Behind
Lawn Mower**

Model No. 22205TE—Serial No. 315000001 and Up



Ordering Replacement Parts

To order replacement parts, please supply the part number, the quantity, and the description of each part desired.

Understanding Reference Numbers

Each identified part in an illustration has a reference number. The reference number for a part also appears in the parts list, along with other information about the part.

This catalog uses two special reference number formats, one to indicate parts in a service assembly and another to indicate the quantity of a given part in an illustration.

Service Assembly Reference Numbers

Parts in service assemblies have reference numbers in the form a:b. The a represents the reference number of the entire service assembly and the b represents a sequential number unique to each part within the service assembly.

For example, a wheel assembly might be identified by reference number 6, the tire by 6:1, the valve by 6:2, and the wheel by 6:3. When you order the assembly identified by reference number 6, you receive all parts identified by reference numbers 6:1, 6:2, and 6:3. However, you may also order any part individually. Reference numbers of this type appear in illustration and in parts lists.

Reference Numbers Indicating Quantity

In an illustration, if a reference number indicates more than one part, the reference number has the form nX y. The n represents the quantity of the part, the X is the multiplication symbol, and the y represents the reference number.

For example, in an illustration, the reference number 2X 37 means that two of the parts identified by reference number 37 are indicated.

List of Abbreviations

AR: as required

ASM: assembly

BBC: blade brake control

BHTF: button head thread forming

CARR: carriage

CCW: counter clockwise

CW: clockwise

DEG: degrees

DPA: Dual Point Adjustment

ECM: electronic control module

EXT: external

FH: flat head

GA: gauge

HD: heavy-duty

HF: hex flange

HH: hex head

HHF: hex head flange

HHFTF: hex head flange thread forming

HJ: hex jam

HLH: hex lag head

HOC: height-of-cut

HP: high pressure

HSBH: hex socket button head

HSFH: hex socket flat head

HSH: hex socket head

HWH: hex washer head

HWHTF: hex washer head thread forming

HYD: hydraulic

LH: left hand

LP: low pressure

LPG: Liquefied Petroleum Gas

NI: nylon insert

NPTF: national pipe thread fine

PFH: phillips flat head

PPH: phillips pan head

PPHTF: phillips pan head thread forming

PRH: phillips round head

PTH: phillips truss head

PTO: power-take-off

RH: right hand

ROPS: roll-over protection system

RRB: rear roller brush

SFH: slotted fillister head

SHH: slotted hex head

SHWH: slotted hex washer head

SPH: slotted pan head

SQH: square head

SRH: slotted round head

STD: standard

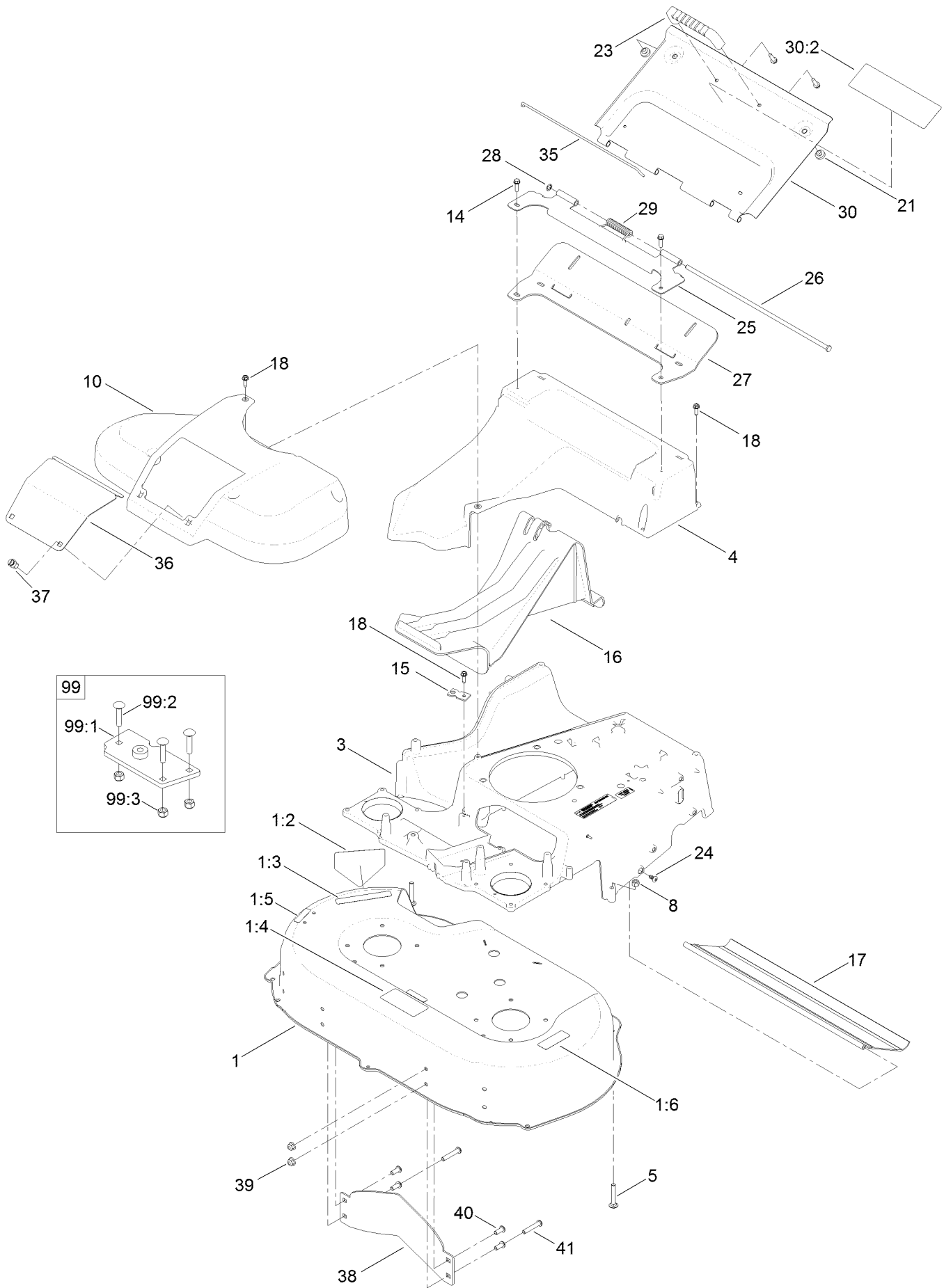
TAP: self tapping

TTH: torx truss head

Contents

Deck, Frame and Chute Assembly	4
Spindle and Blade Assembly	6
Side Discharge Chute Assembly	8
Grass Bag Assembly	10
Brake Assembly	12
Engine and Fuel Tank Assembly	14
Front Bumper and Wheel Assembly	16
Traction and Height-of-Cut Assembly	18
Handle Assembly	20
Brake Cable and Control Bar Assembly	22
Attachments and Accessories	24

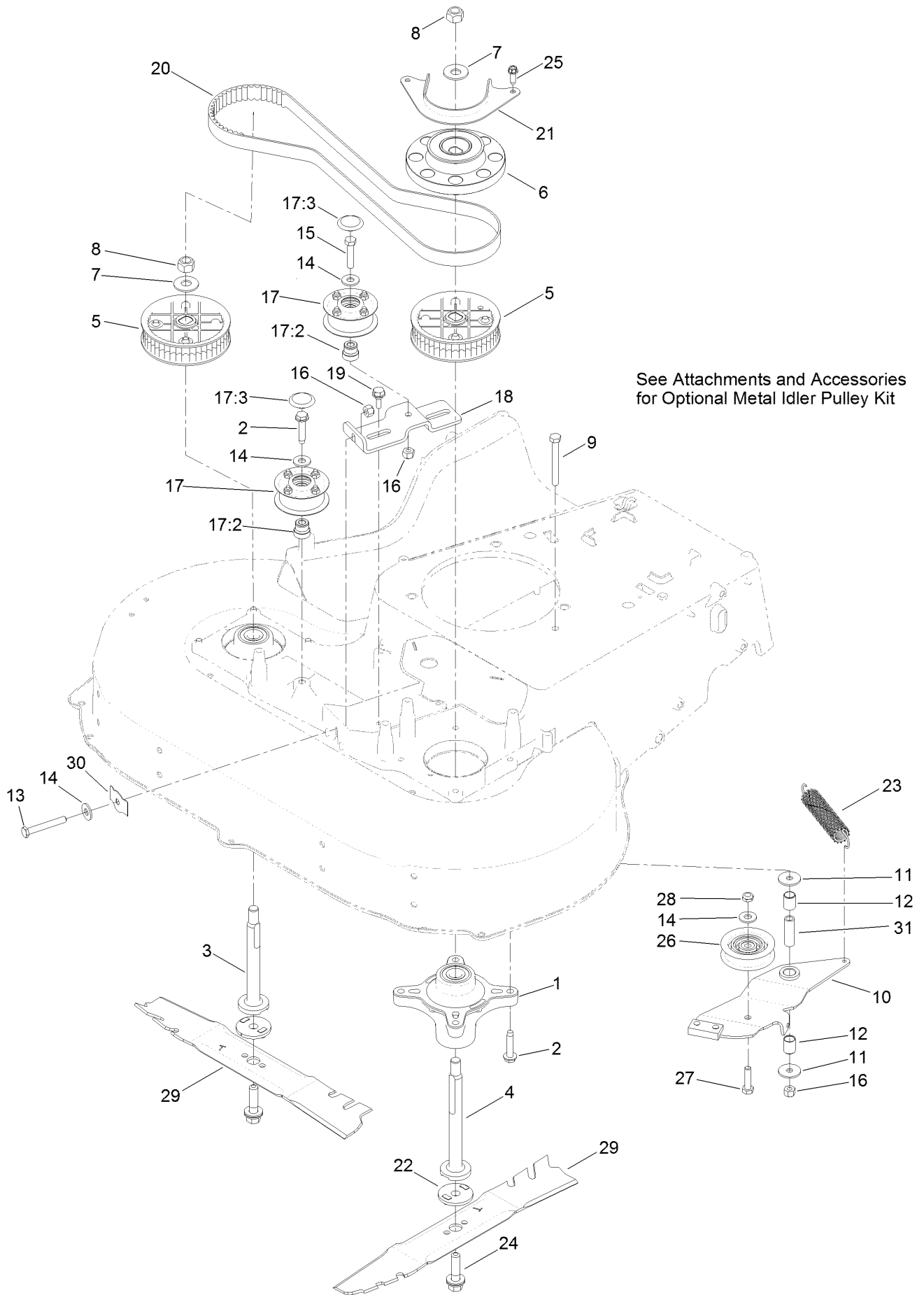
Deck, Frame and Chute Assembly



Deck, Frame and Chute Assembly (continued)

<i>Ref.</i>	<i>Part Number</i>	<i>Qty.</i>	<i>Description</i>	<i>Ref.</i>	<i>Part Number</i>	<i>Qty.</i>	<i>Description</i>
1	131-4544	1	Deck-30 Inch	25	116-6351-03	1	Bracket-Hinge
1:2	112-8760	1	Decal-Danger	26	116-6933	1	Pin-Hinge
1:3	93-7009	1	Decal-Danger	27	116-6229	1	Seal-Door
1:4	116-8528	1	Decal	28	32151-72	1	Ring-Retaining
1:5	120-9570	2	Decal-Warning	29	116-7573	1	Spring-Torsion, Cover
1:6	121-1449	1	Decal-Warning, Block	30	116-8355	1	Rear Door ASM
3	131-9659-01	1	Frame	30:2	116-7583	1	Decal-Warning
4	120-3336	1	Chute	35	116-6966	1	Clip-Seal
5	127-6841	2	Screw-CARR	36	121-5793-03	1	Door-Access
8	3296-29	2	Nut-Lock, NI	37	121-5840	2	Fastener
10	121-5810	1	Cover-Belt	38	130-2352-01	1	Baffle-Control
14	46-8091	4	Screw-HWH	39	104-8300	4	Nut-Flange, NI
15	107-7497	1	Bracket-Cable, Traction	40	3274-55	2	Screw-HSBH
16	120-5225	1	Plug-Mulch	41	125-7977	2	Screw-HSBH
17	121-5841	1	Shield-Trailing	99	125-5072	1	Frame Plate Kit (Service)
18	49-2040	9	Screw-HWHTF	99:1	125-2542	1	Plate Frame ASM
21	1-513658	2	Bumper	99:2	3229-3	3	Screw-CARR
23	65-5100	1	Handle-Door	99:3	3296-42	3	Nut-Lock, NI
24	117-1092	2	Screw-PTH				

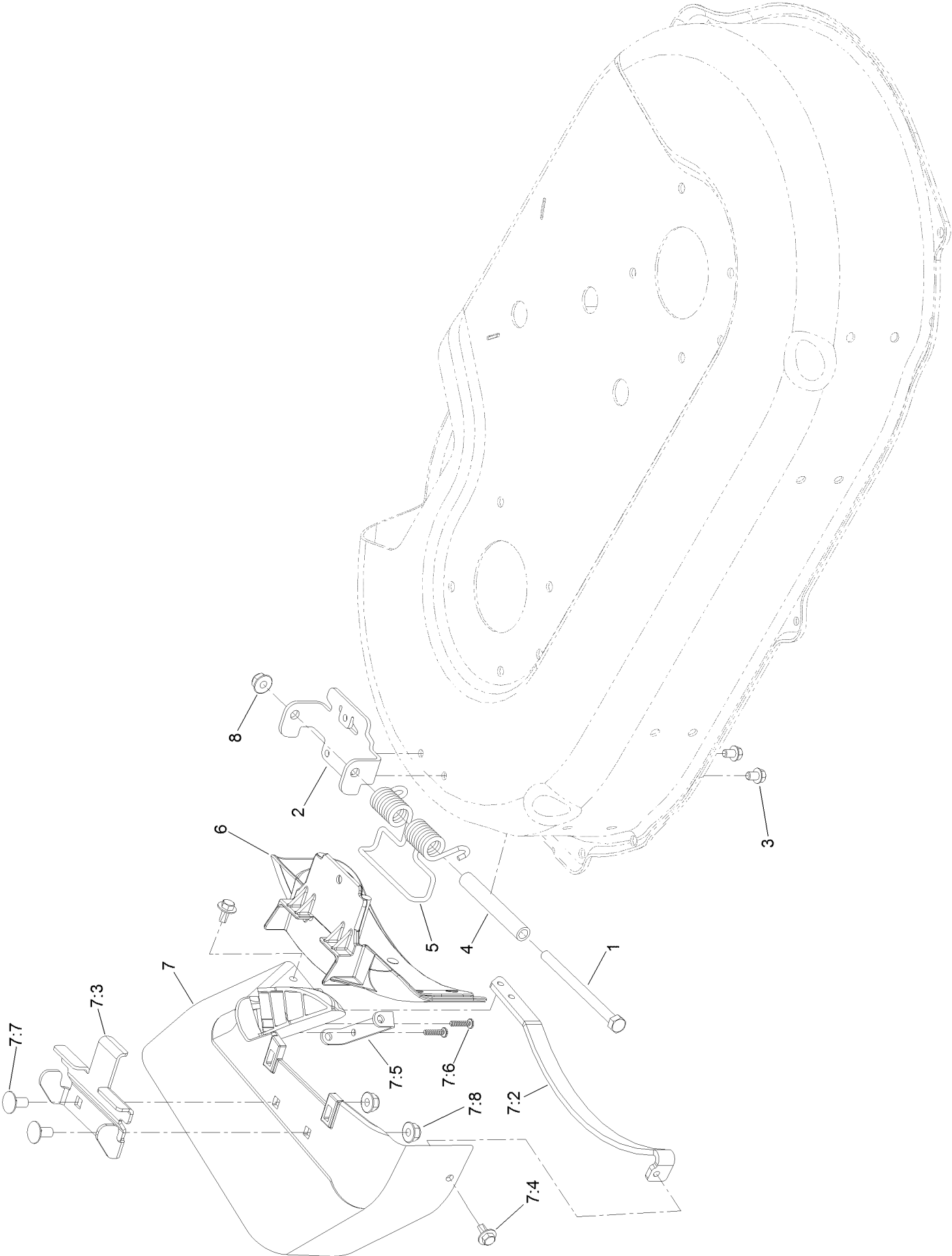
Spindle and Blade Assembly



Spindle and Blade Assembly (continued)

<i>Ref.</i>	<i>Part Number</i>	<i>Qty.</i>	<i>Description</i>	<i>Ref.</i>	<i>Part Number</i>	<i>Qty.</i>	<i>Description</i>
1	120-6234	2	Spindle ASM	17:2	131-4504	1	Adapter-Bore
2	32144-57	9	Screw	17:3	125-2533	1	Plug-Cap
3	120-5234	1	Shaft-Spindle	18	120-3348	1	Bracket-Idler
4	120-5235	1	Shaft-Spindle	19	120-7024	2	Screw-Shoulder, HHF
5	121-9100	2	Sprocket	20	120-3335	1	Belt-Synchronous
6	130-6664	1	Pulley-Brake, Spindle	21	120-5245-03	1	Guide-Belt, Spindle
7	109-9505	2	Washer-Spring	22	120-5236	2	Adapter-Blade
8	3296-19	2	Nut-Hex	23	121-5808	1	Spring-Extension, Brake
9	322-13	1	Screw-HH	24	125-2466	2	Bolt-Blade
10	121-5796	1	Brake Arm ASM	25	49-2040	2	Screw-HWHTF
11	5-4460	2	Washer-Pivot	26	120-7082	1	Pulley-Idler
12	131-0819	2	Bushing-Sleeve	27	322-6	1	Screw-HH
13	9114524	1	Bolt-TAP, HH	28	3296-47	1	Nut-Lock, NI
14	3256-3	4	Washer-Flat	29	120-9500-03	2	Blade-Atomic, 15.4In
15	322-7	1	Screw-HH	30	121-2336	1	Spring-Flat
16	3296-29	3	Nut-Lock, NI	31	131-0823	1	Spacer-Brake
17	131-4529	2	Pulley Kit				

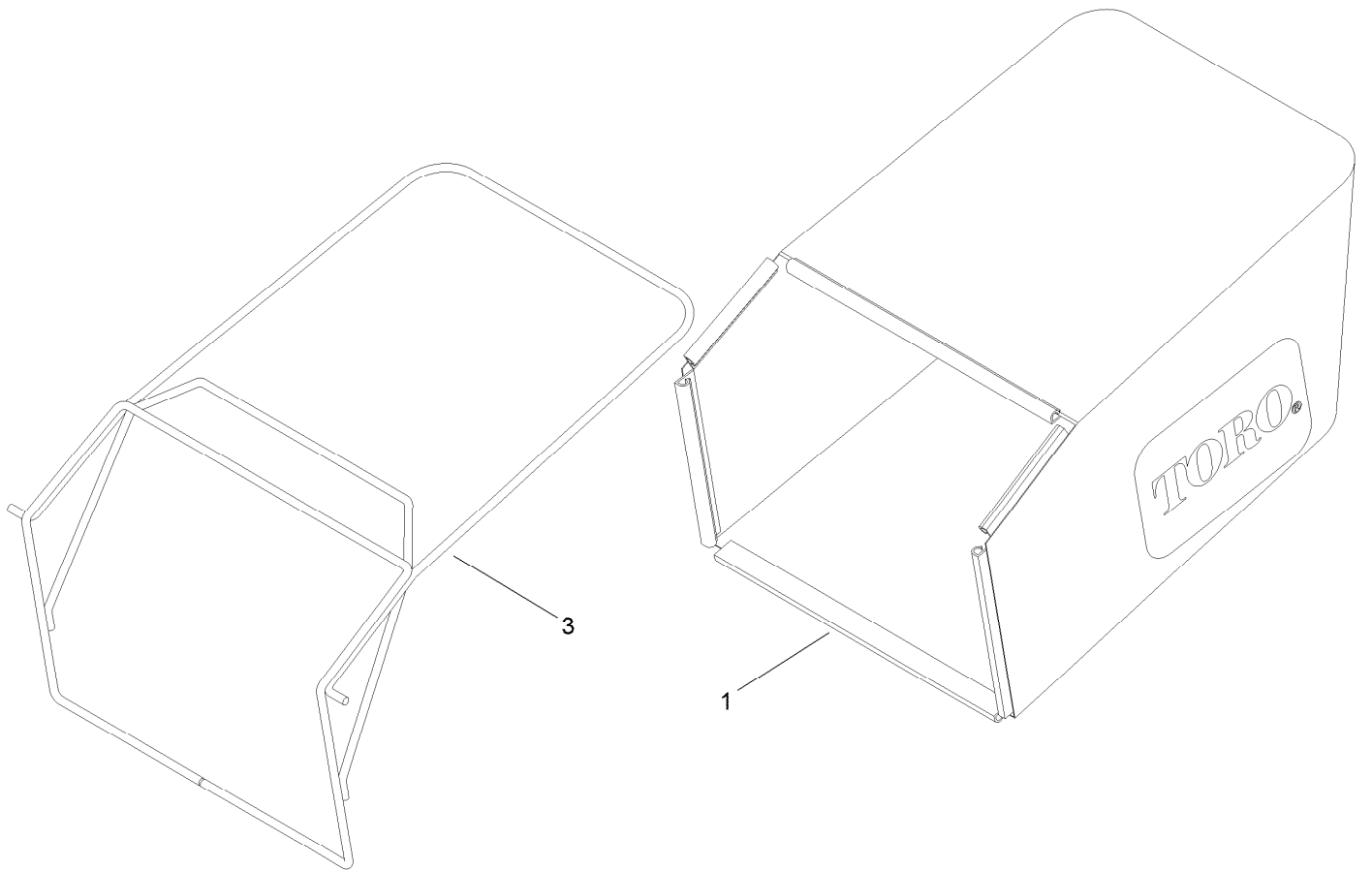
Side Discharge Chute Assembly



Side Discharge Chute Assembly (continued)

<i>Ref.</i>	<i>Part Number</i>	<i>Qty.</i>	<i>Description</i>	<i>Ref.</i>	<i>Part Number</i>	<i>Qty.</i>	<i>Description</i>
1	322-38	1	Screw-HH	7:3	121-9196	1	Bracket-Chute
2	121-9195	1	Hinge	7:4	46-8560	2	Screw-HHFTF
3	99-8445	2	Screw-HWH	7:5	112-6416	1	Bracket-Cover
4	125-2478	1	Spacer	7:6	94-4496	2	Screw-PPH
5	121-9193	1	Spring-Torsion	7:7	3230-18	2	Screw-CARR
6	125-5093-01	1	Cover-Discharge	7:8	104-8300	2	Nut-Flange, NI
7	116-9754	1	Side Discharge Chute ASM	8	104-8300	1	Nut-Flange, NI
7:2	116-9752-03	1	Guard-Chute				

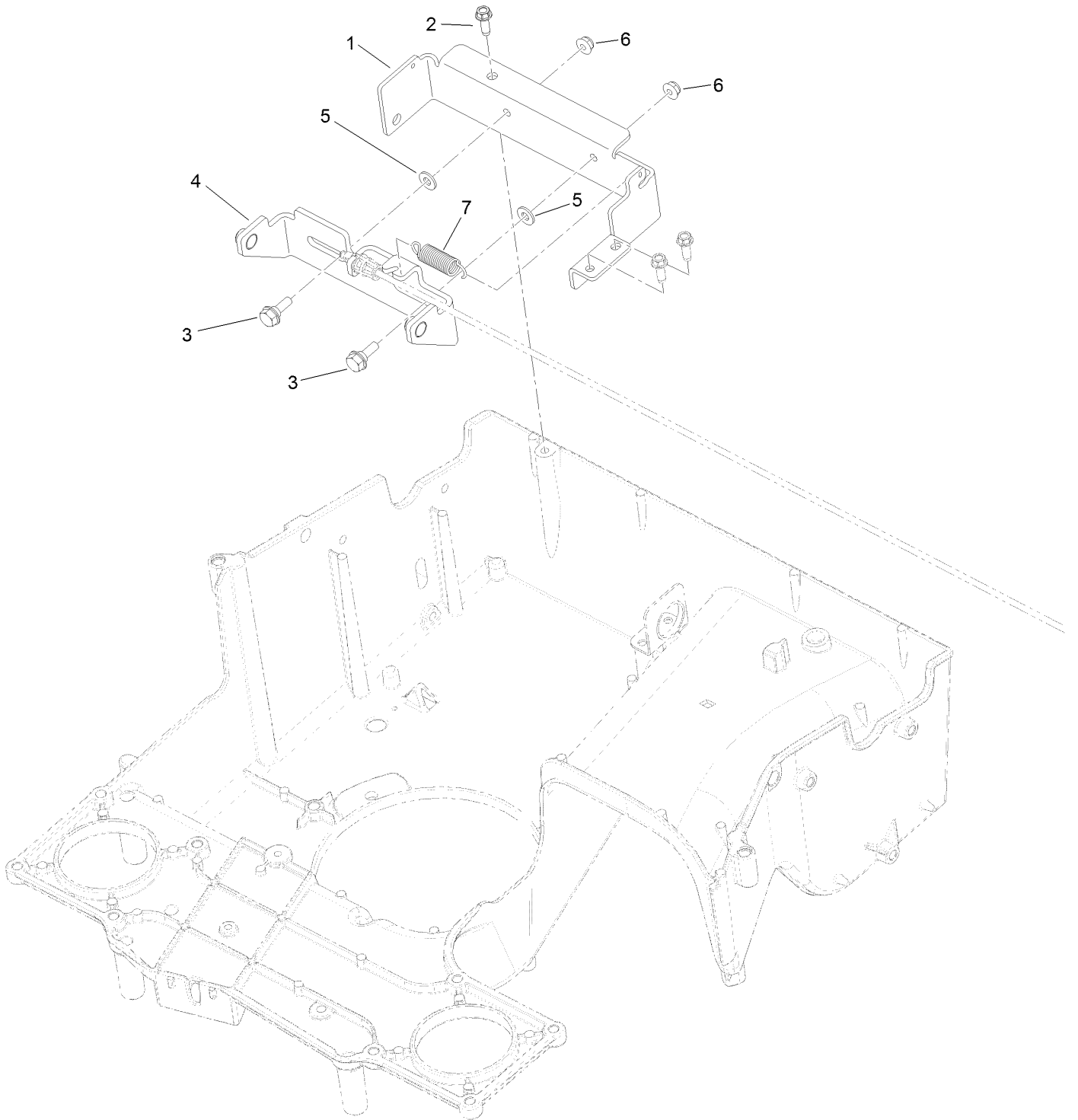
Grass Bag Assembly



Grass Bag Assembly (continued)

<i>Ref.</i>	<i>Part Number</i>	<i>Qty.</i>	<i>Description</i>
1	121-5775	1	Grass Bag ASM
3	116-5596-03	1	Frame-Bag

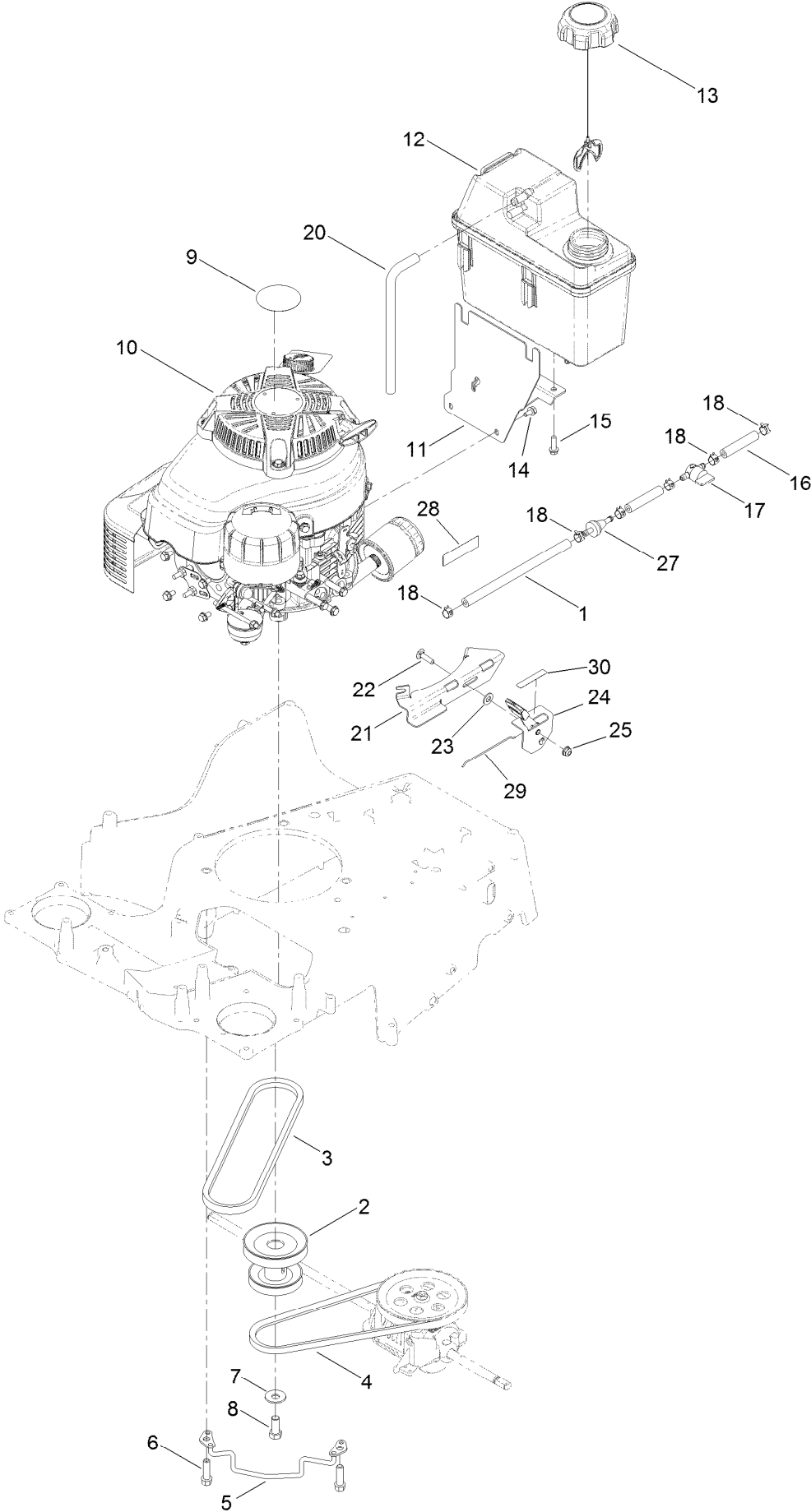
Brake Assembly



Brake Assembly (continued)

<i>Ref.</i>	<i>Part Number</i>	<i>Qty.</i>	<i>Description</i>	<i>Ref.</i>	<i>Part Number</i>	<i>Qty.</i>	<i>Description</i>
1	131-9655	1	Bracket	5	3256-22	2	Washer-Flat
2	49-2040	1	Screw-HWHTF	6	104-7201	2	Nut-Flange, NI
3	120-7024	2	Screw-Shoulder, HHF	7	80-4600	1	Spring-Extension
4	131-9656	1	Brake ASM				

Engine and Fuel Tank Assembly



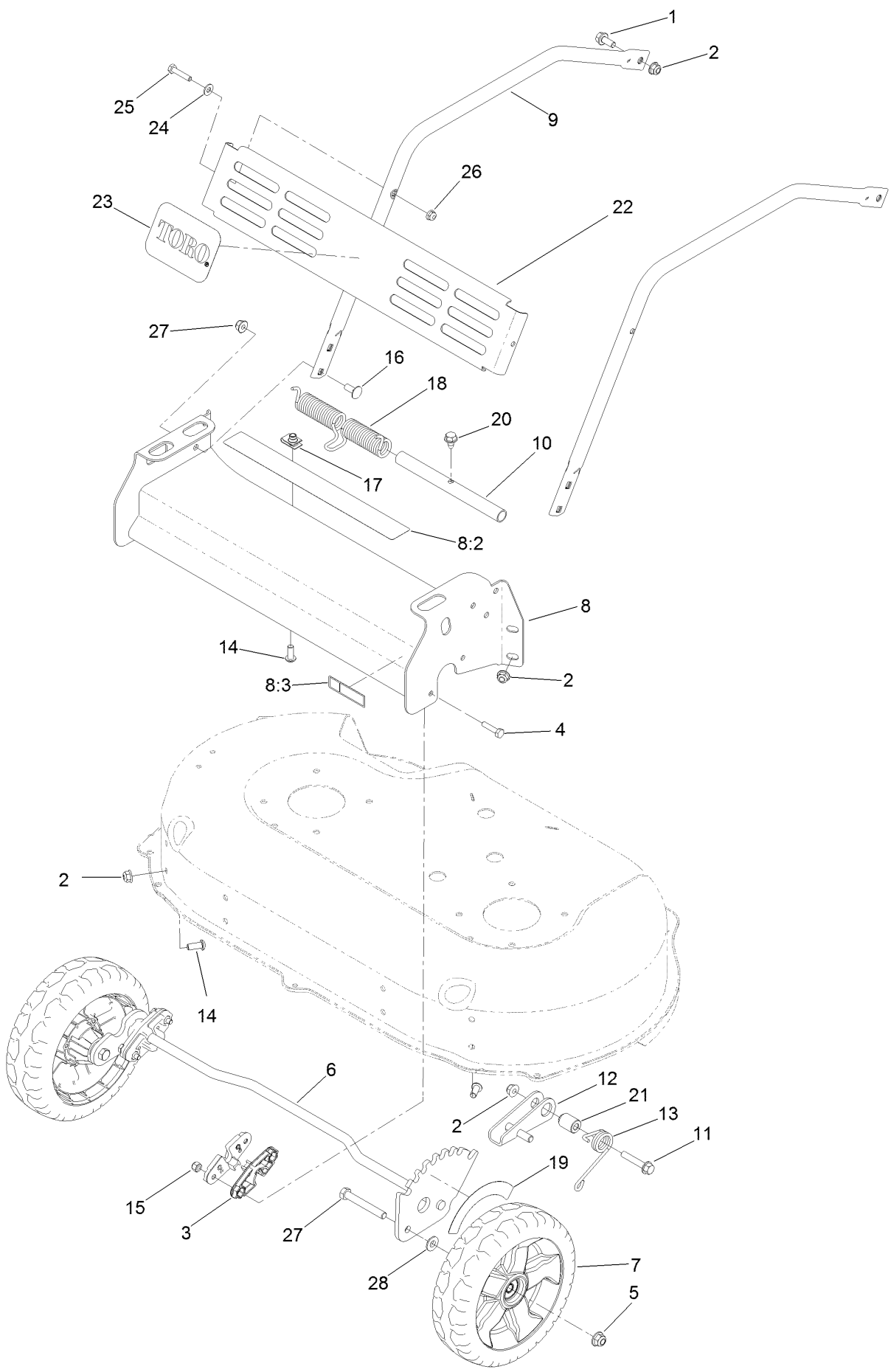
Engine and Fuel Tank Assembly (continued)

<i>Ref.</i>	<i>Part Number</i>	<i>Qty.</i>	<i>Description</i>	<i>Ref.</i>	<i>Part Number</i>	<i>Qty.</i>	<i>Description</i>
1	119-1892	1	Hose-Fuel	15	46-8091	2	Screw-HWH
2	116-7013	1	Pulley-Engine	16	109-0304	2	Hose-Fuel
3	121-5765	1	V-Belt	17	1-603770	1	Valve-Fuel
4	116-7116	1	Belt	18	2412-98	6	Clamp-Hose
5	120-7077	1	Guide-Belt	20	115-0962	1	Hose-Vent, Canister
6	95-1727	3	Screw-Taptite	21	130-6440-03	1	Bracket-Mount, Throttle
7	3290-465	1	Washer-Belleville	22	3229-30	1	Screw-CARR
8	3212-4	1	Screw-HH	23	3256-23	1	Washer-Flat
9	109-6528	1	Decal-Recoil	24	130-9655	1	Control-Throttle
10		1	Engine-Fj180V Kaw BBC ●■	25	104-7201	1	Nut-Flange, NI
11	115-0954-03	1	Mount-Tank	27	71-9280	1	Filter-Fuel
12	125-5066	1	Tank-Fuel	28	116-9313	1	Decal-Warning, Engine
13	109-6776	1	Cap-Ratchet, Tethered	29	130-9654	1	Wire-Control
14	116-8929	3	Screw-HWH	30	130-9656	1	Decal-Throttle, Choke

● Not serviced separately

■ Obtain parts from www.kawpowerepc.com

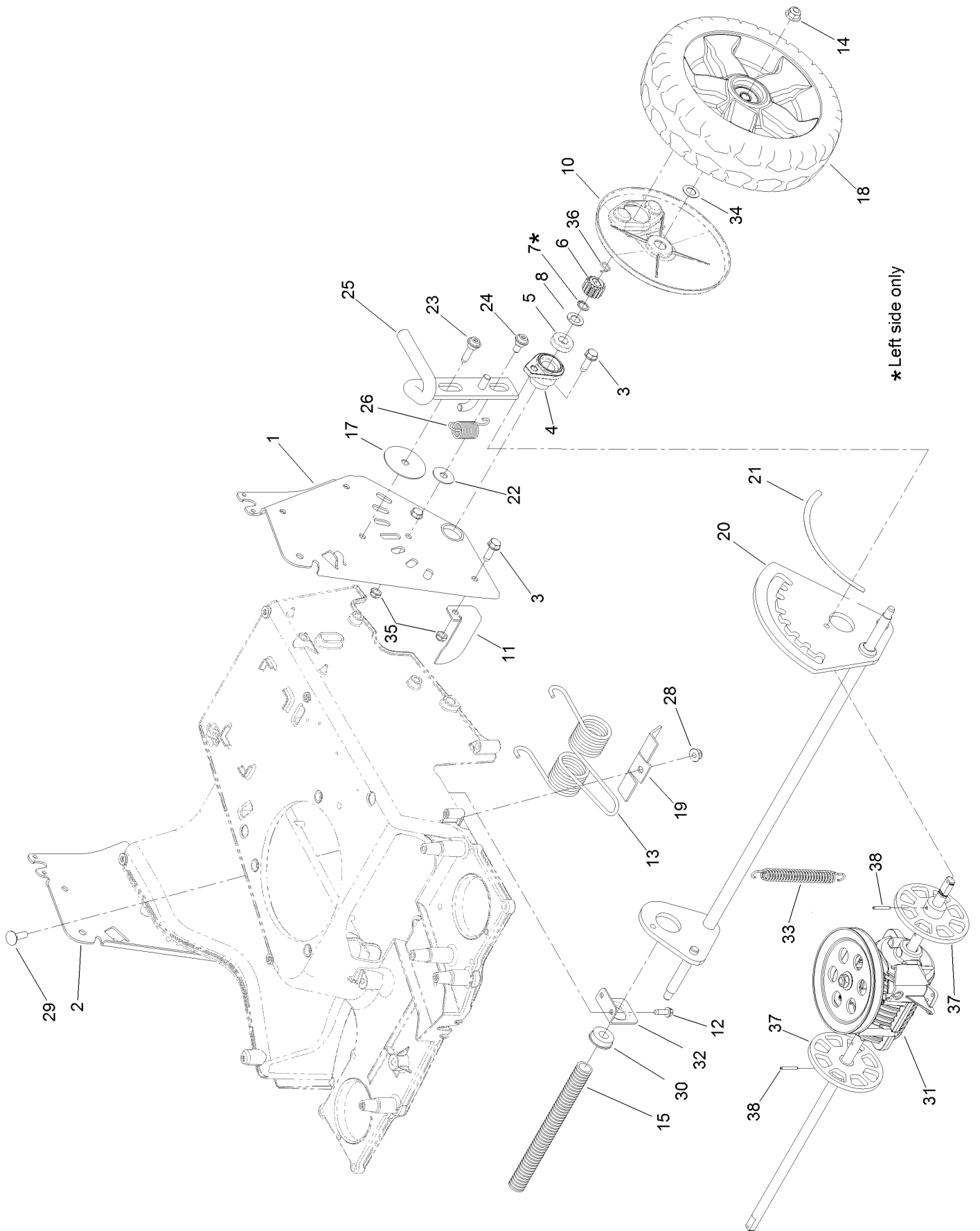
Front Bumper and Wheel Assembly



Front Bumper and Wheel Assembly (continued)

<i>Ref.</i>	<i>Part Number</i>	<i>Qty.</i>	<i>Description</i>	<i>Ref.</i>	<i>Part Number</i>	<i>Qty.</i>	<i>Description</i>
1	116-7230	2	Screw-HHF	14	3274-55	5	Screw-HSBH
2	104-8300	11	Nut-Flange, NI	15	3296-42	4	Nut-Lock, NI
3	121-5781	4	Bushing-Front	16	3230-23	4	Screw-CARR
4	321-7	4	Screw-HH	17	94-2413	1	Nut-U
5	104-8301	2	Nut-Flange, NI	18	121-2337	1	Spring-Torsion
6	131-0826	1	Axle-Front	19	127-6864	1	Decal-HOC, Front
7	125-1080	2	Wheel	20	9266934	1	Screw
8	125-2488	1	Front Bumper ASM	21	125-2486	1	Spacer
8:2	121-5847	1	Decal	22	121-9187-03	1	Shield
8:3	116-7581	1	Decal-Warning	23	117-0871	1	Decal
9	121-9168-03	2	Brace	24	3256-22	2	Washer-Flat
10	121-5809	1	Mandrell-Spring	25	321-8	2	Screw-HH
11	94-5780	1	Screw-HWH	26	104-7201	2	Nut-Flange, NI
12	125-2483	1	Lock-Height, Adjustment	27	323-13	2	Screw-HH
13	120-9465	1	Spring-Torsion	28	74-1671	2	Spacer-Cover, Wheel

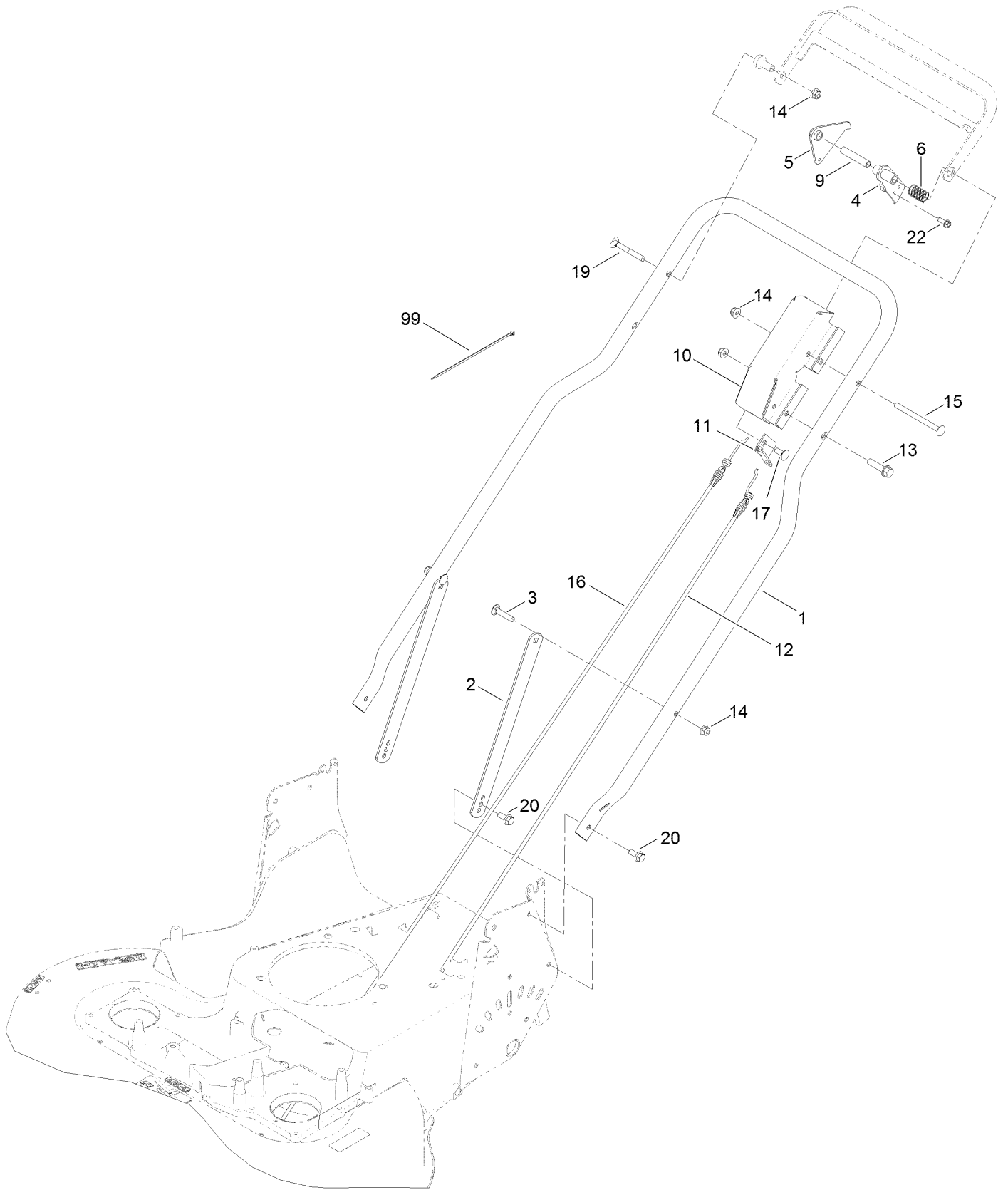
Traction and Height-of-Cut Assembly



Traction and Height-of-Cut Assembly (continued)

<i>Ref.</i>	<i>Part Number</i>	<i>Qty.</i>	<i>Description</i>	<i>Ref.</i>	<i>Part Number</i>	<i>Qty.</i>	<i>Description</i>
1	121-2394-03	1	LH HOC Plate ASM	21	127-6865	1	Decal-HOC, Rear
2	121-2395-03	1	RH HOC Plate ASM	22	52-2860	1	Washer
3	701243	7	Screw-HWHTF	23	119-2267	1	Screw-Shoulder, BHTF
4	120-5210	2	Retainer-Bearing	24	120-9471	1	Bolt-Shoulder
5	109-8020	2	Bearing-Ball	25	120-7090	1	Lock-Height, Adjust
6	110-9417	2	Gear-Pinion, 15T	26	120-9452	1	Spring-Extension
7	32151-61	1	Ring-Retaining	28	104-8300	1	Nut-Flange, NI
8	110-7191	2	Washer-Thrust	29	3230-2	1	Bolt-CARR
10	125-2480	2	Cover-Gear	30	104-8699	1	Bearing-Ball
11	121-5821	1	Bracket-Stop	31	131-9662	1	Transmission
12	49-2040	2	Screw-HWHTF	32	120-7008	1	Mount-Bearing
13	121-2368	1	Spring-Torsion	33	120-7027	1	Spring-Extension
14	104-8301	2	Nut-Flange, NI	34	36-4780	2	Washer-Plain
15	121-5799	1	Conduit-Convoluted	35	3296-47	2	Nut-Lock, NI
17	125-2540	1	Washer-Plain	36	130-2369	2	Pin-Snap
18	131-4599	2	Wheel ASM (W/Gear)	37	131-9652	2	Rotor ASM
19	121-2397	1	Bracket	38	933156	2	Pin-Roll
20	131-4516	1	Axle-Rear				

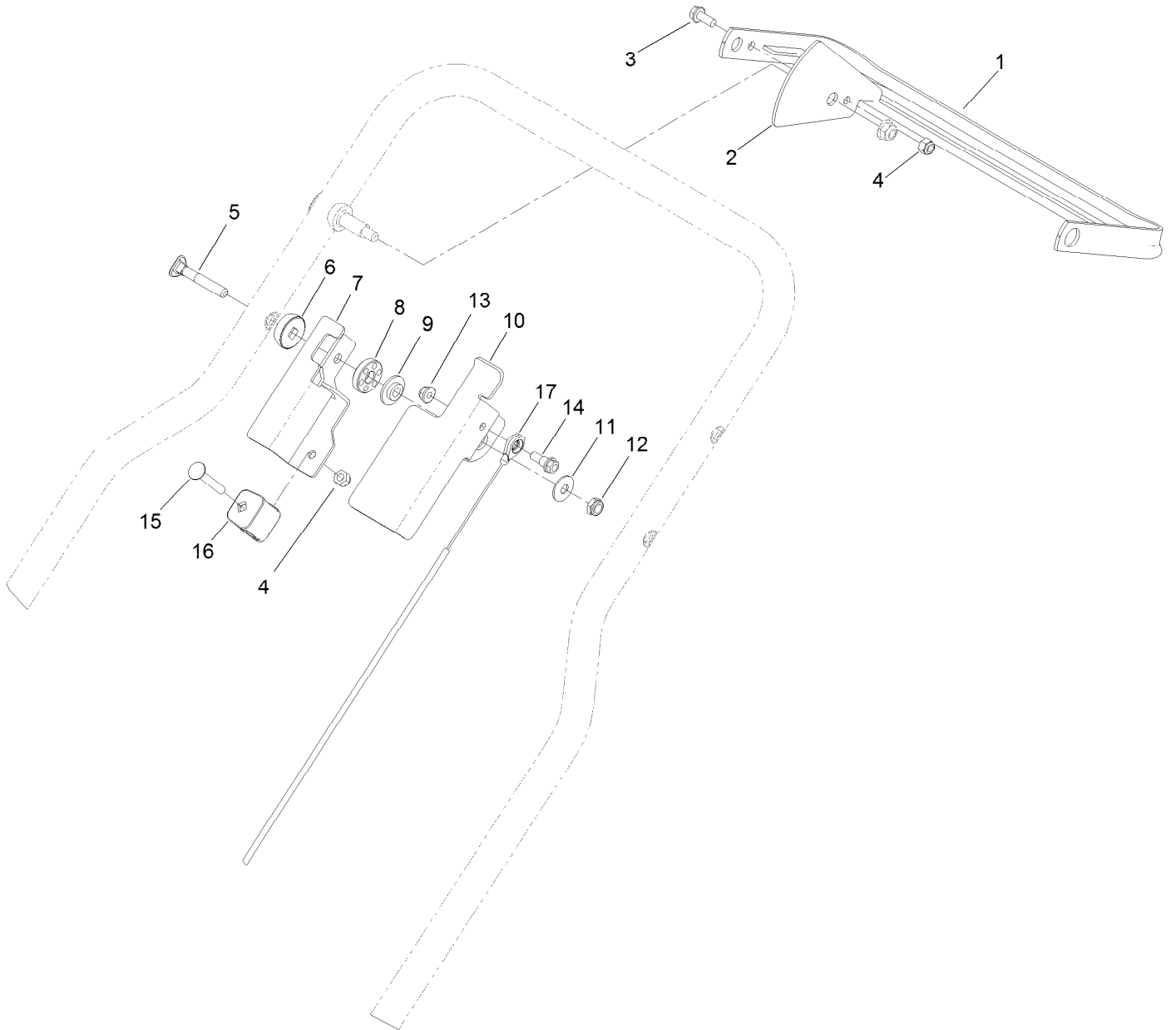
Handle Assembly



Handle Assembly (continued)

<i>Ref.</i>	<i>Part Number</i>	<i>Qty.</i>	<i>Description</i>	<i>Ref.</i>	<i>Part Number</i>	<i>Qty.</i>	<i>Description</i>
1	121-5827-03	1	Handle	13	32144-102	1	Screw-HWH
2	116-8208-03	2	Support-Handle	14	104-8300	5	Nut-Flange, NI
3	3230-4	2	Screw-CARR	15	106-9758	1	Screw-CARR
4	121-5831	1	BBC Lever ASM	16	127-6868	1	Cable-Traction
5	121-9136	1	Lever-Traction	17	3230-23	1	Screw-CARR
6	85-6750	1	Spring-Control	19	17-9427	1	Screw
9	84-9030	1	Spacer-Bracket, Control	20	116-7230	4	Screw-HHF
10	121-5789-03	1	Bracket-Control	22	49-2040	1	Screw-HWHTF
11	121-9166	1	Bracket	99	614249	3	Tie-Cable
12	127-0741	1	Cable-Brake				

Brake Cable and Control Bar Assembly



Brake Cable and Control Bar Assembly (continued)

<i>Ref.</i>	<i>Part Number</i>	<i>Qty.</i>	<i>Description</i>	<i>Ref.</i>	<i>Part Number</i>	<i>Qty.</i>	<i>Description</i>
1	131-9660-03	1	Bar-Control	10	131-9668-03	1	Lever-Brake
2	131-9670-03	1	Stop	11	3290-456	1	Washer-Belleville
3	32144-85	1	Screw-HWH	12	3296-47	1	Nut-Lock, NI
4	3296-73	2	Nut-Lock, NI	13	104-7201	1	Nut-Flange, NI
5	17-9428	1	Screw-Handle	14	42-3560	1	Bolt-Shoulder
6	106-7260	1	Washer-Curved	15	3229-5	1	Screw-CARR
7	131-9669-03	1	Bracket-Anchor, Cable	16	106-6801	1	Anchor-Cable
8	92-4890	1	Washer	17	131-9661	1	Cable-Brake, Parking
9	105-3006	1	Washer-Stepped				

Attachments and Accessories

For 22205TE 76cm TurfMaster Walk-Behind Lawn Mower

Product Name	Model/Part
Mulching Kit	125-5064
Idler Pulley Kit.....	126-7890

Notes:

Notes:

Notes:



Count on it.