



Count on it.

Parts Catalog

**76cm TurfMaster Walk-Behind
Lawn Mower**

Model No. 22205TE—Serial No. 314000001 and Up



Ordering Replacement Parts

To order replacement parts, please supply the part number, the quantity, and the description of each part desired.

Understanding Reference Numbers

Each identified part in an illustration has a reference number. The reference number for a part also appears in the parts list, along with other information about the part.

This catalog uses two special reference number formats, one to indicate parts in a service assembly and another to indicate the quantity of a given part in an illustration.

Service Assembly Reference Numbers

Parts in service assemblies have reference numbers in the form a:b. The a represents the reference number of the entire service assembly and the b represents a sequential number unique to each part within the service assembly.

For example, a wheel assembly might be identified by reference number 6, the tire by 6:1, the valve by 6:2, and the wheel by 6:3. When you order the assembly identified by reference number 6, you receive all parts identified by reference numbers 6:1, 6:2, and 6:3. However, you may also order any part individually. Reference numbers of this type appear in illustration and in parts lists.

Reference Numbers Indicating Quantity

In an illustration, if a reference number indicates more than one part, the reference number has the form nX y. The n represents the quantity of the part, the X is the multiplication symbol, and the y represents the reference number.

For example, in an illustration, the reference number 2X 37 means that two of the parts identified by reference number 37 are indicated.

List of Abbreviations

AR: as required

ASM: assembly

BBC: blade brake control

BHTF: button head thread forming

CARR: carriage

CCW: counter clockwise

CW: clockwise

DEG: degrees

DPA: Dual Point Adjustment

ECM: electronic control module

EXT: external

FH: flat head

GA: gauge

HD: heavy-duty

HF: hex flange

HH: hex head

HHF: hex head flange

HHFTF: hex head flange thread forming

HJ: hex jam

HLH: hex lag head

HOC: height-of-cut

HP: high pressure

HSBH: hex socket button head

HSFH: hex socket flat head

HSH: hex socket head

HWH: hex washer head

HWHTF: hex washer head thread forming

HYD: hydraulic

LH: left hand

LP: low pressure

LPG: Liquefied Petroleum Gas

NI: nylon insert

NPTF: national pipe thread fine

PFH: phillips flat head

PPH: phillips pan head

PPHTF: phillips pan head thread forming

PRH: phillips round head

PTH: phillips truss head

PTO: power-take-off

RH: right hand

ROPS: roll-over protection system

RRB: rear roller brush

SFH: slotted fillister head

SHH: slotted hex head

SHWH: slotted hex washer head

SPH: slotted pan head

SQH: square head

SRH: slotted round head

STD: standard

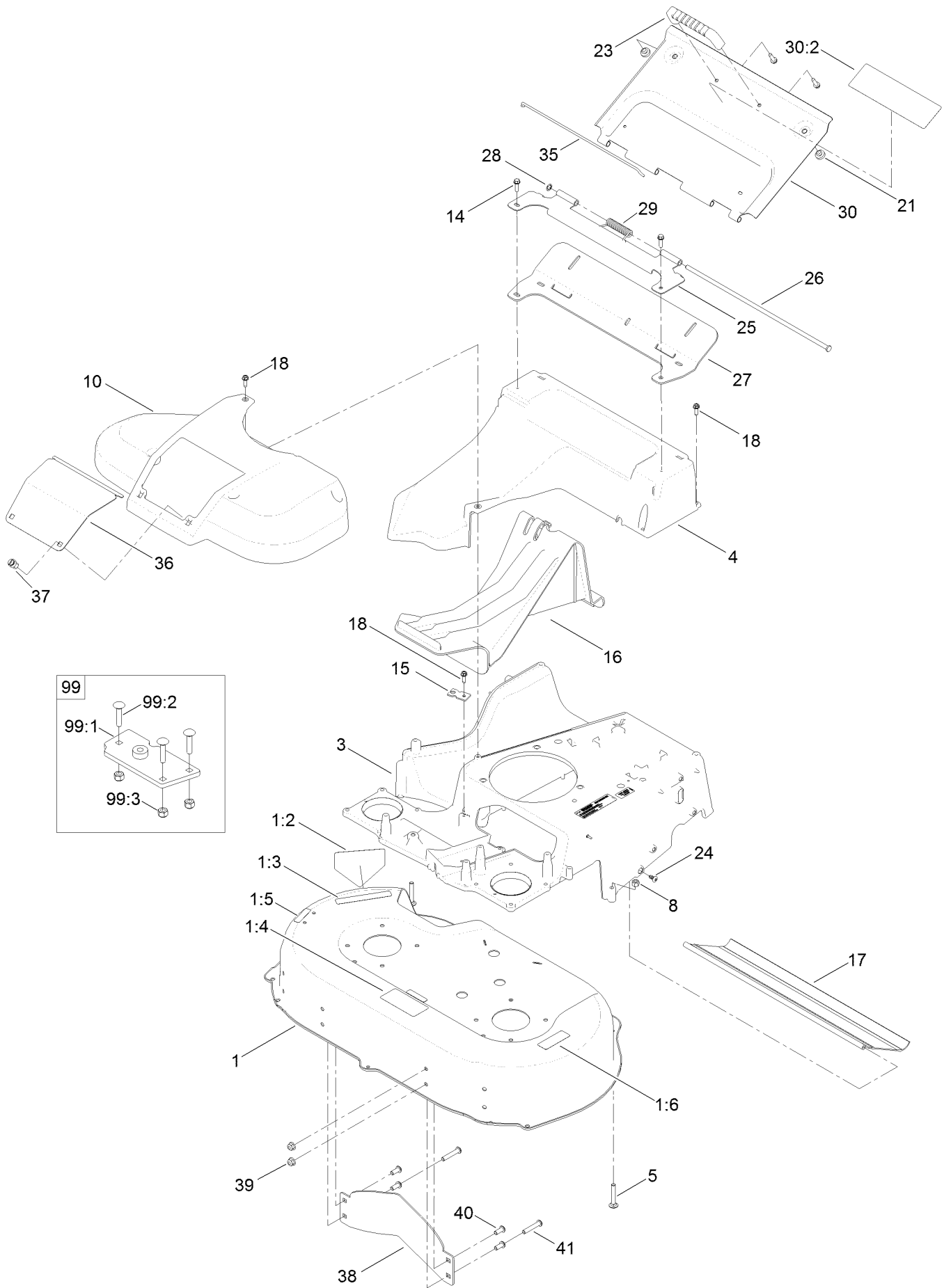
TAP: self tapping

TTH: torx truss head

Contents

Deck, Frame and Chute Assembly	4
Spindle and Blade Assembly	6
Side Discharge Chute Assembly	8
Grass Bag Assembly	10
Brake Assembly	12
Engine and Fuel Tank Assembly	14
Front Bumper and Wheel Assembly	16
Traction and Height-of-Cut Assembly	18
Handle Assembly	20
Attachments and Accessories	22

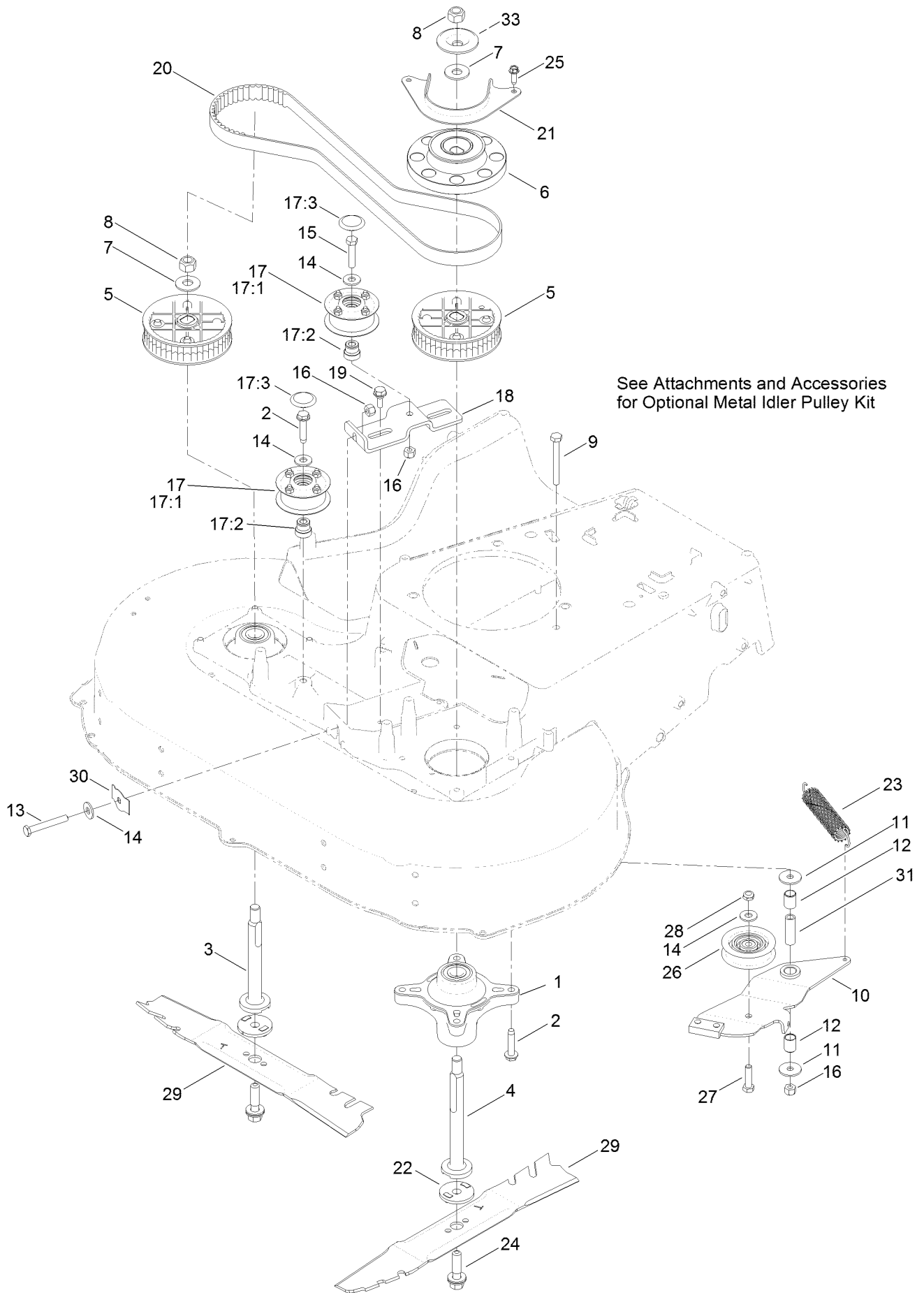
Deck, Frame and Chute Assembly



Deck, Frame and Chute Assembly (continued)

<i>Ref.</i>	<i>Part Number</i>	<i>Qty.</i>	<i>Description</i>	<i>Ref.</i>	<i>Part Number</i>	<i>Qty.</i>	<i>Description</i>
1	127-6861	1	30In Deck ASM	25	116-6351-03	1	Bracket-Hinge
1:2	112-8760	1	Decal-Danger	26	116-6933	1	Pin-Hinge
1:3	93-7009	1	Decal-Danger	27	116-6229	1	Seal-Door
1:4	116-8528	1	Decal	28	32151-72	1	Ring-Retaining
1:5	120-9570	2	Decal-Warning	29	116-7573	1	Spring-Torsion, Cover
1:6	121-1449	1	Decal-Warning, Block	30	116-8355	1	Rear Door ASM
3	127-6859-01	1	Frame	30:2	116-7583	1	Decal-Warning
4	120-3336	1	Chute	35	116-6966	1	Clip-Seal
5	127-6841	2	Screw-CARR	36	121-5793-03	1	Door-Access
8	3296-29	2	Nut-Lock, NI	37	121-5840	2	Fastener
10	121-5810	1	Cover-Belt	38	130-2352-01	1	Baffle-Control
14	46-8091	4	Screw-HWH	39	104-8300	4	Nut-Flange, NI
15	107-7497	1	Bracket-Cable, Traction	40	3274-55	2	Screw-HSBH
16	120-5225	1	Plug-Mulch	41	125-7977	2	Screw-HSBH
17	121-5841	1	Shield-Trailing	99	125-5072	1	Frame Plate Kit (Service)
18	49-2040	9	Screw-HWHTF	99:1	125-2542	1	Plate Frame ASM
21	1-513658	2	Bumper	99:2	3229-3	3	Screw-CARR
23	65-5100	1	Handle-Door	99:3	3296-42	3	Nut-Lock, NI
24	117-1092	2	Screw-PTH				

Spindle and Blade Assembly

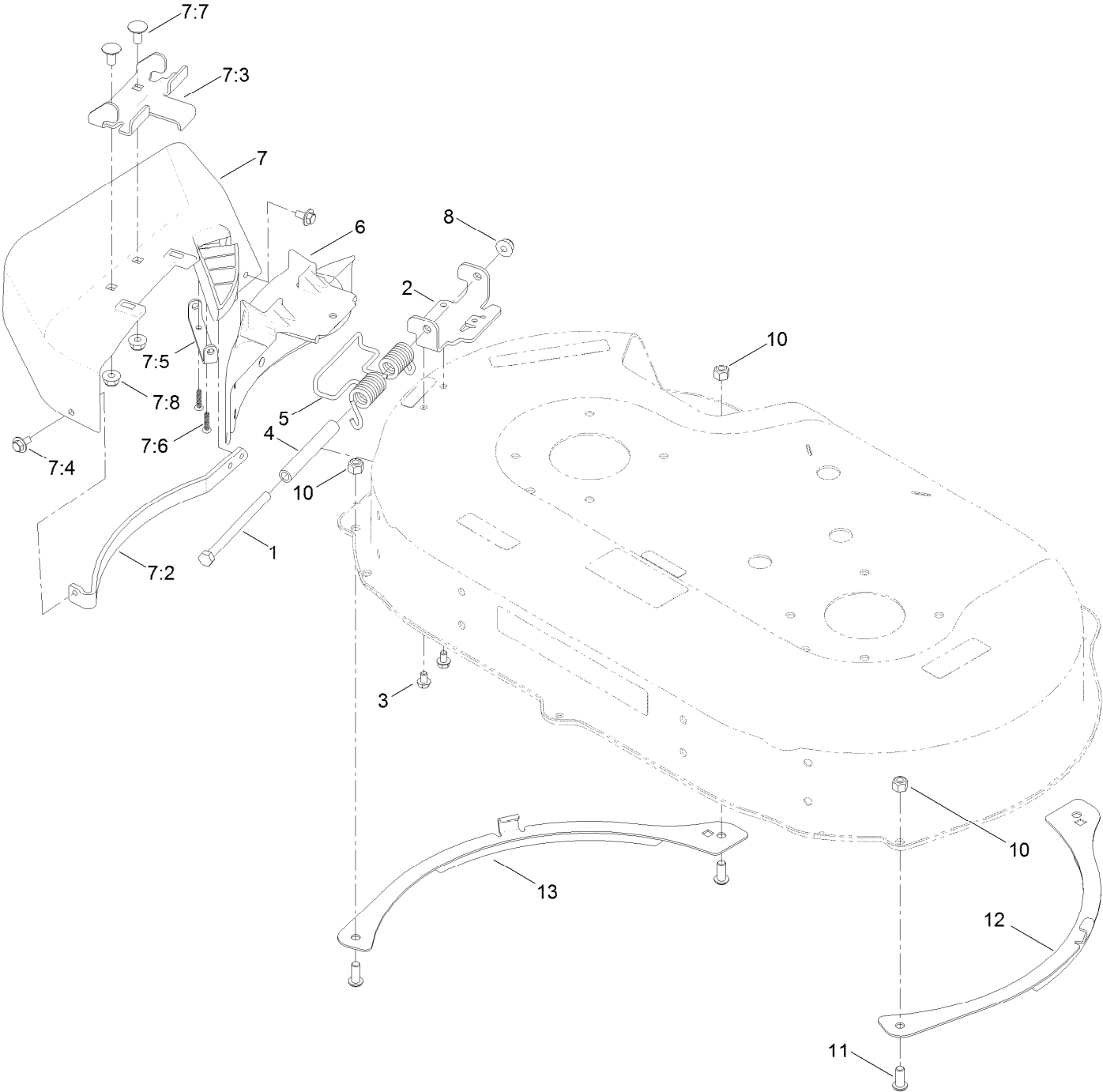


Spindle and Blade Assembly (continued)

<i>Ref.</i>	<i>Part Number</i>	<i>Qty.</i>	<i>Description</i>	<i>Ref.</i>	<i>Part Number</i>	<i>Qty.</i>	<i>Description</i>
1	120-6234	2	Spindle ASM	17:2	131-4504	1	Adapter-Bore
2	32144-57	9	Screw	17:3	125-2533	1	Plug-Cap
3	120-5234	1	Shaft-Spindle	18	120-3348	1	Bracket-Idler
4	120-5235	1	Shaft-Spindle	19	120-7024	2	Screw-Shoulder, HHF
5	121-9100	2	Sprocket	20	120-3335	1	Belt-Synchronous
6	120-3334	1	Pulley-Brake, Spindle	21	120-5245-03	1	Guide-Belt, Spindle
7	109-9505	2	Washer-Spring	22	120-5236	2	Adapter-Blade
8	130-2384	2	Nut-Hex	23	121-5808	1	Spring-Extension, Brake
9	322-13	1	Screw-HH	24	125-2466	2	Bolt-Blade
10	121-5796	1	Brake Arm ASM	25	49-2040	2	Screw-HWHTF
11	5-4460	2	Washer-Pivot	26	120-7082	1	Pulley-Idler
12	131-0819	2	Bushing-Sleeve	27	322-6	1	Screw-HH
13	9114524	1	Bolt-TAP, HH	28	3296-47	1	Nut-Lock, NI
14	3256-3	4	Washer-Flat	29	120-9500-03	2	Blade-Atomic, 15.4In
15	322-7	1	Screw-HH	30	121-2336	1	Spring-Flat
16	3296-29	3	Nut-Lock, NI	31	131-0823	1	Spacer-Brake
17	131-4529	2	Pulley Kit	33	130-2364	1	Washer-Cup
17:1		1	Pulley ASM ●				

● Not serviced separately

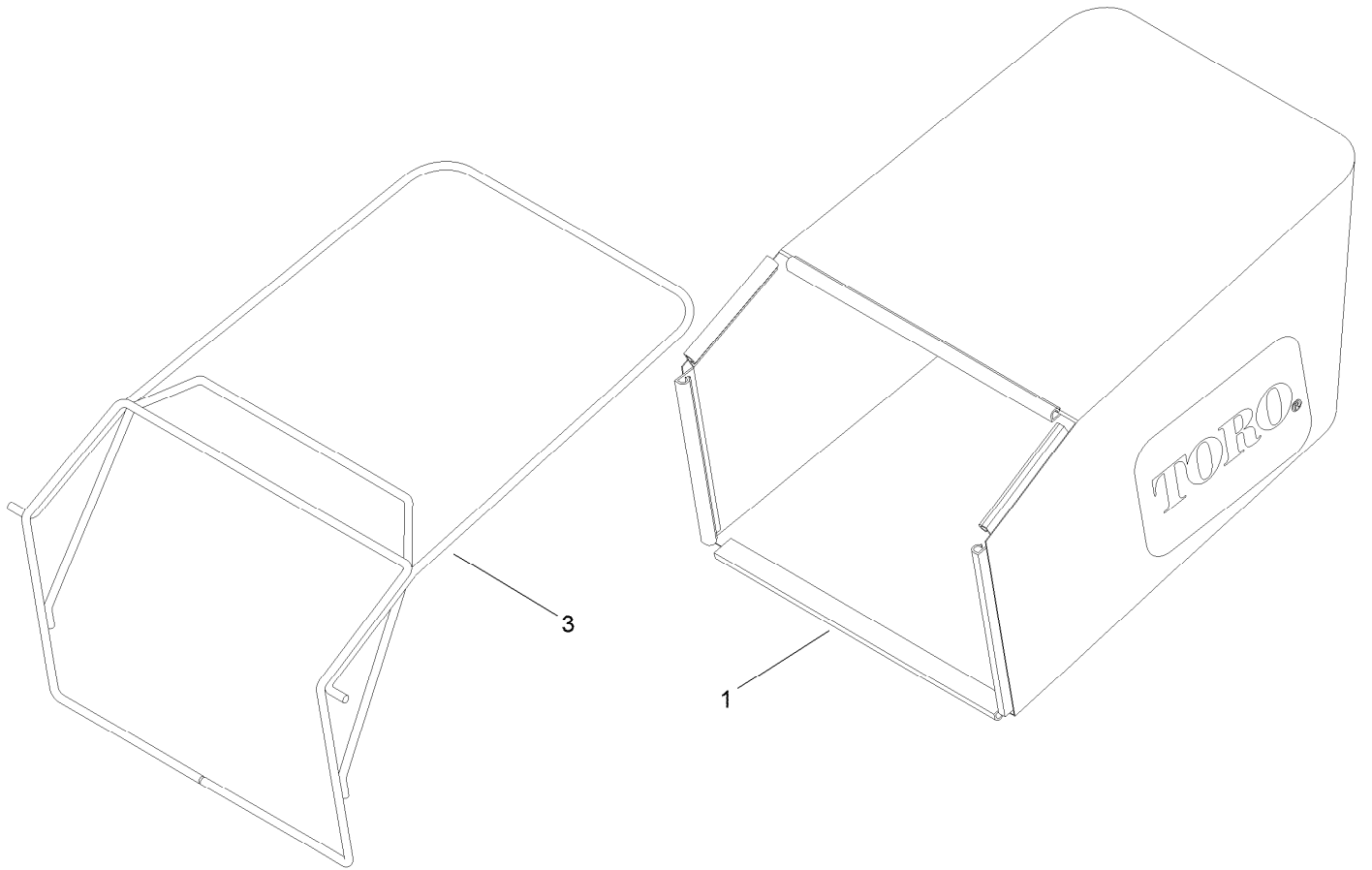
Side Discharge Chute Assembly



Side Discharge Chute Assembly (continued)

<i>Ref.</i>	<i>Part Number</i>	<i>Qty.</i>	<i>Description</i>	<i>Ref.</i>	<i>Part Number</i>	<i>Qty.</i>	<i>Description</i>
1	322-38	1	Screw-HH	7:5	112-6416	1	Bracket-Cover
2	121-9195	1	Hinge	7:6	94-4496	2	Screw-PPH
3	99-8445	2	Screw-HWH	7:7	3230-18	2	Screw-CARR
4	125-2478	1	Spacer	7:8	104-8300	2	Nut-Flange, NI
5	121-9193	1	Spring-Torsion	8	104-8300	1	Nut-Flange, NI
6	125-5093-01	1	Cover-Discharge	10	3296-29	3	Nut-Lock, NI
7	116-9754	1	Side Discharge Chute ASM	11	3274-55	3	Screw-HSBH
7:2	116-9752-03	1	Guard-Chute	12	125-5074-03	1	Skid-LH
7:3	121-9196	1	Bracket-Chute	13	125-5075-03	1	Skid-RH
7:4	46-8560	2	Screw-HHFTF				

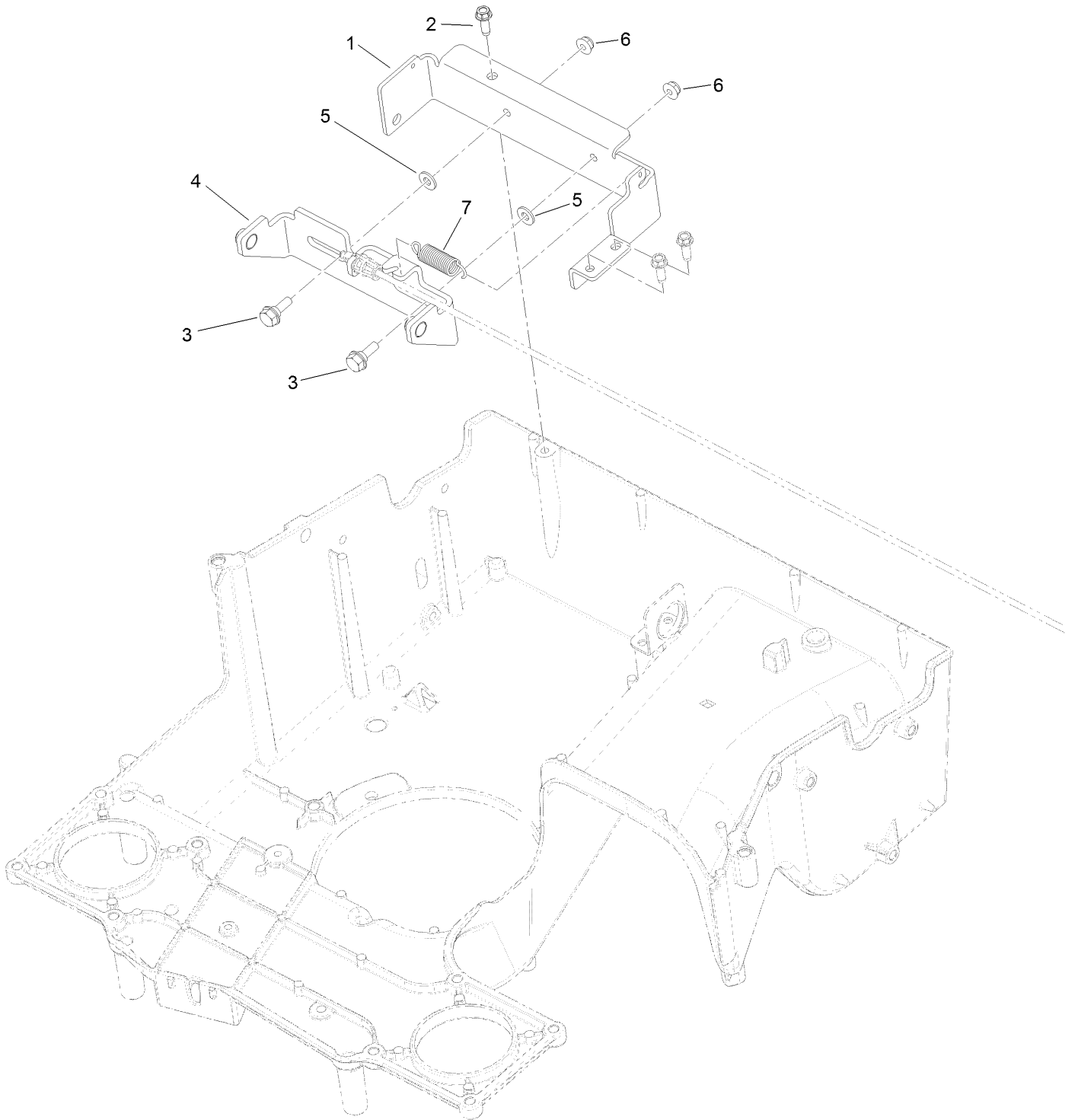
Grass Bag Assembly



Grass Bag Assembly (continued)

<i>Ref.</i>	<i>Part Number</i>	<i>Qty.</i>	<i>Description</i>
1	121-5775	1	Grass Bag ASM
3	116-5596-03	1	Frame-Bag

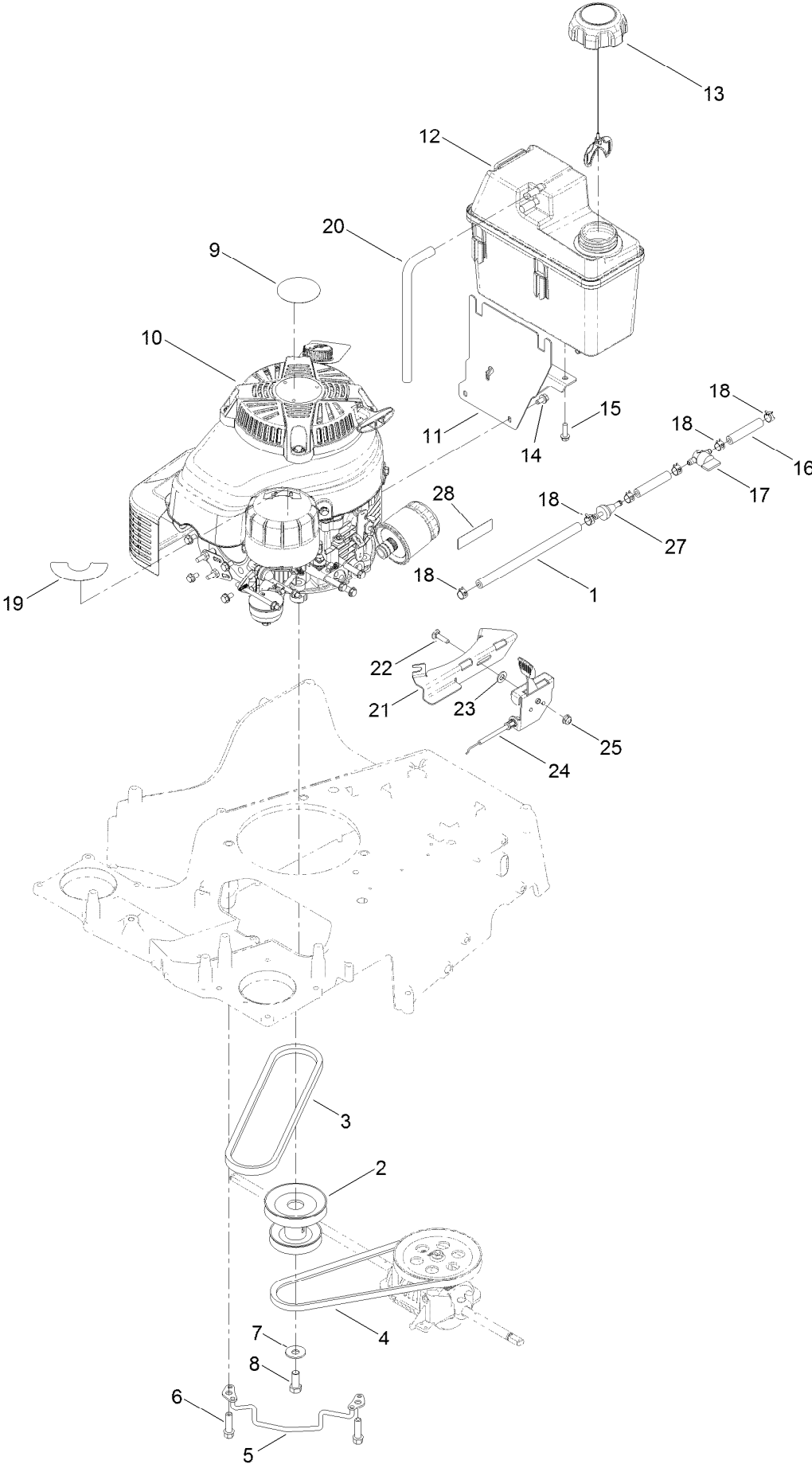
Brake Assembly



Brake Assembly (continued)

<i>Ref.</i>	<i>Part Number</i>	<i>Qty.</i>	<i>Description</i>	<i>Ref.</i>	<i>Part Number</i>	<i>Qty.</i>	<i>Description</i>
1	131-9655	1	Bracket	5	3256-22	2	Washer-Flat
2	49-2040	1	Screw-HWHTF	6	104-7201	2	Nut-Flange, NI
3	120-7024	2	Screw-Shoulder, HHF	7	80-4600	1	Spring-Extension
4	131-9656	1	Brake ASM				

Engine and Fuel Tank Assembly



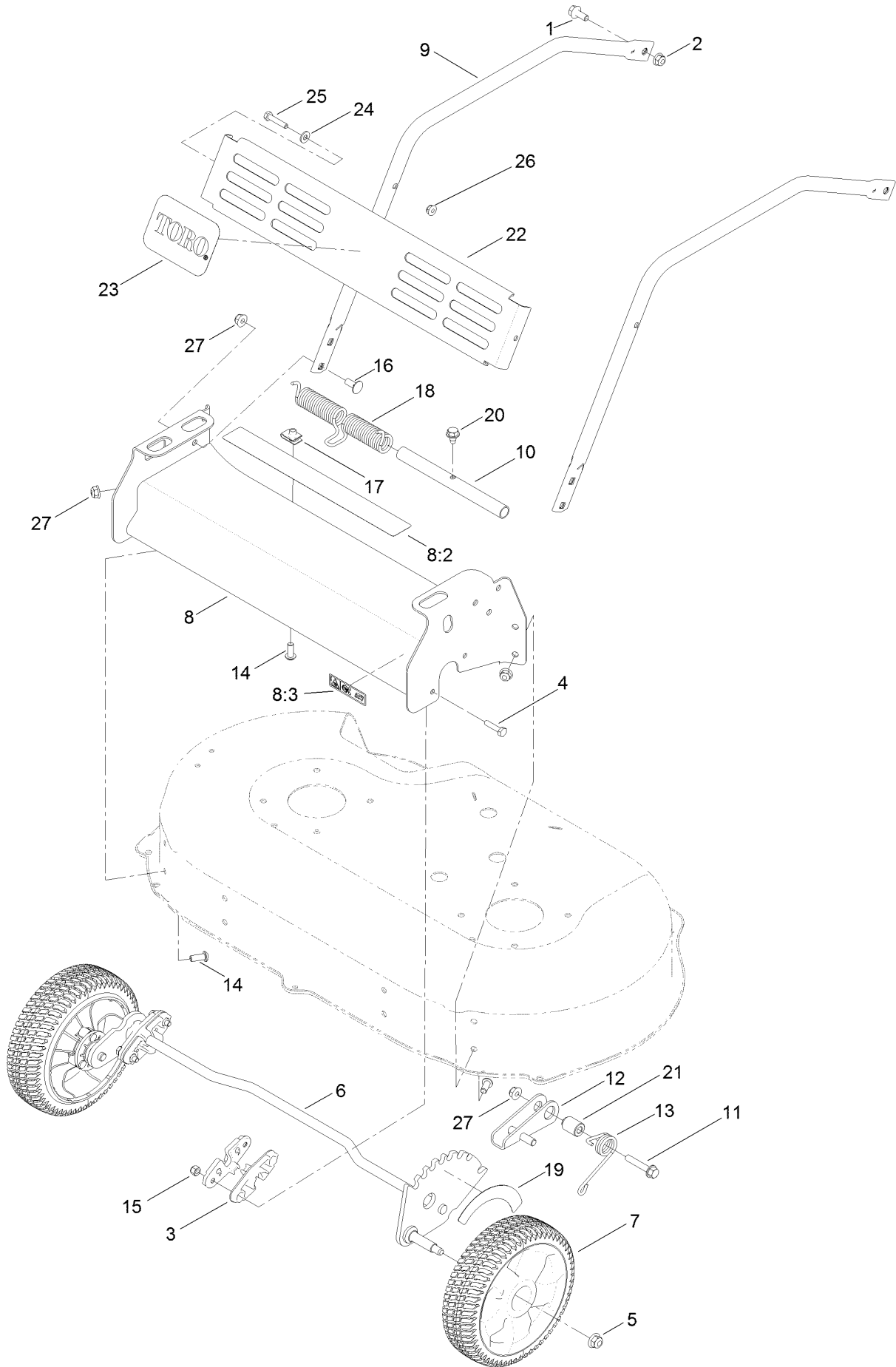
Engine and Fuel Tank Assembly (continued)

<i>Ref.</i>	<i>Part Number</i>	<i>Qty.</i>	<i>Description</i>	<i>Ref.</i>	<i>Part Number</i>	<i>Qty.</i>	<i>Description</i>
1	119-1892	1	Hose-Fuel	15	46-8091	2	Screw-HWH
2	116-7013	1	Pulley-Engine	16	109-0304	2	Hose-Fuel
3	121-5765	1	V-Belt	17	1-603770	1	Valve-Fuel
4	116-7116	1	Belt	18	2412-98	6	Clamp-Hose
5	120-7077	1	Guide-Belt	19	114-3415	1	Decal
6	95-1726	3	Screw-Taptite	20	115-0962	1	Hose-Vent, Canister
7	3290-465	1	Washer-Belleville	21	116-2220-03	1	Bracket-Mount, Throttle
8	3212-4	1	Screw-HH	22	3229-30	1	Screw-CARR
9	109-6528	1	Decal-Recoil	23	3256-23	1	Washer-Flat
10		1	Engine-Fj180V Kaw BBC ●■	24	116-2248	1	Throttle
11	115-0954-03	1	Mount-Tank	25	104-7201	1	Nut-Flange, NI
12	125-5066	1	Tank-Fuel	27	71-9280	1	Filter-Fuel
13	109-6776	1	Cap-Ratchet, Tethered	28	116-9313	1	Decal-Warning, Engine
14	116-8929	3	Screw-HWH				

● Not serviced separately

■ Obtain parts from www.kawpowerepc.com

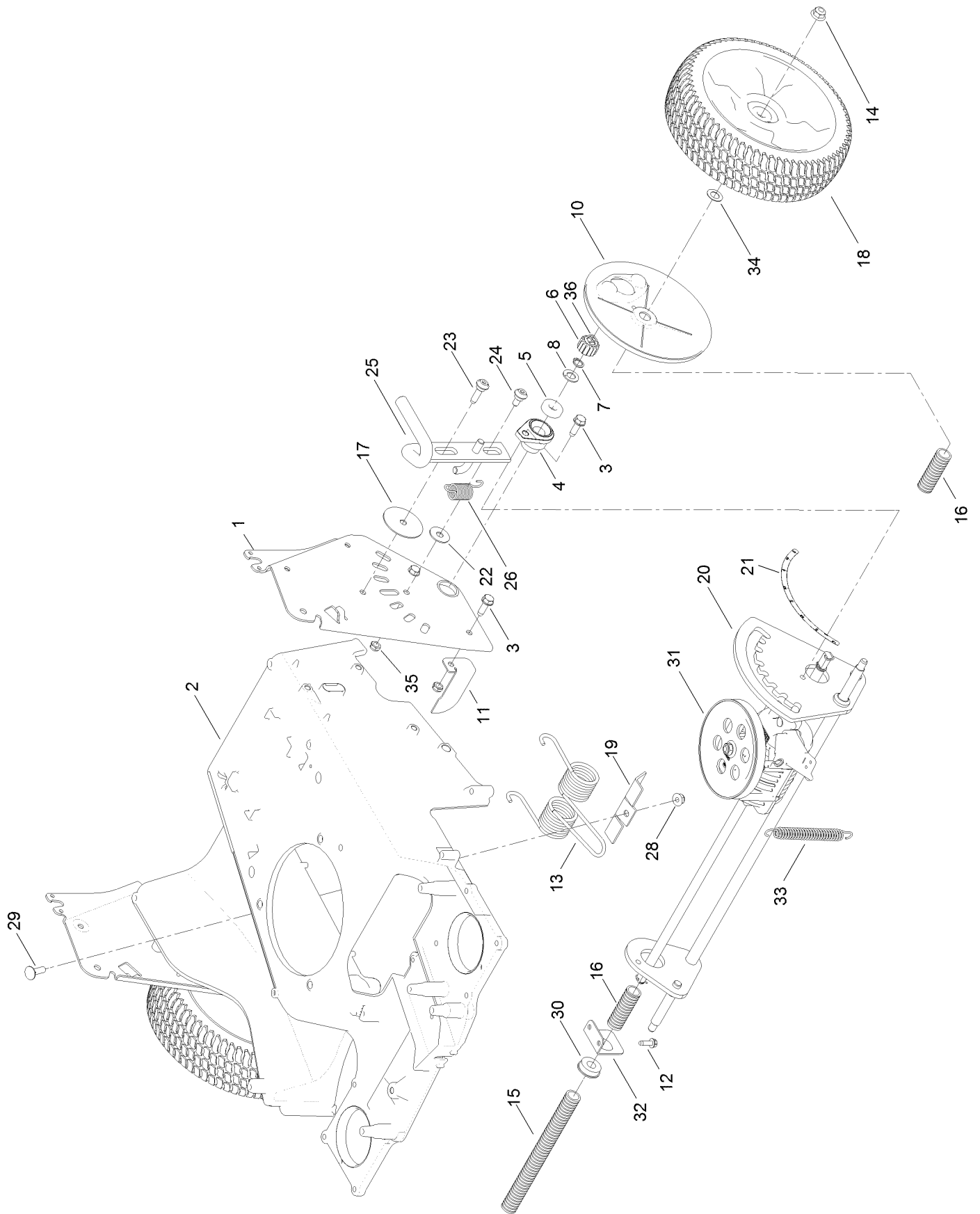
Front Bumper and Wheel Assembly



Front Bumper and Wheel Assembly (continued)

<i>Ref.</i>	<i>Part Number</i>	<i>Qty.</i>	<i>Description</i>	<i>Ref.</i>	<i>Part Number</i>	<i>Qty.</i>	<i>Description</i>
1	116-7230	2	Screw-HHF	14	3274-55	5	Screw-HSBH
2	104-8300	2	Nut-Flange, NI	15	3296-42	4	Nut-Lock, NI
3	121-5781	4	Bushing-Front	16	3230-23	4	Screw-CARR
4	321-7	4	Screw-HH	17	94-2413	1	Nut-U
5	104-8301	2	Nut-Flange, NI	18	121-2337	1	Spring-Torsion
6	120-9454	1	Axle-Front	19	127-6864	1	Decal-HOC, Front
7	125-5057	2	8 Inch Wheel And Ring ASM	20	9266934	1	Screw
8	125-2488	1	Front Bumper ASM	21	125-2486	1	Spacer
8:2	121-5847	1	Decal	22	121-9187-03	1	Shield
8:3	116-7581	1	Decal-Warning	23	117-0871	1	Decal
9	121-9168-03	2	Brace	24	3256-22	2	Washer-Flat
10	121-5809	1	Mandrell-Spring	25	321-8	2	Screw-HH
11	94-5780	1	Screw-HWH	26	104-7201	2	Nut-Flange, NI
12	125-2483	1	Lock-Height, Adjustment	27	104-8300	9	Nut-Flange, NI
13	120-9465	1	Spring-Torsion				

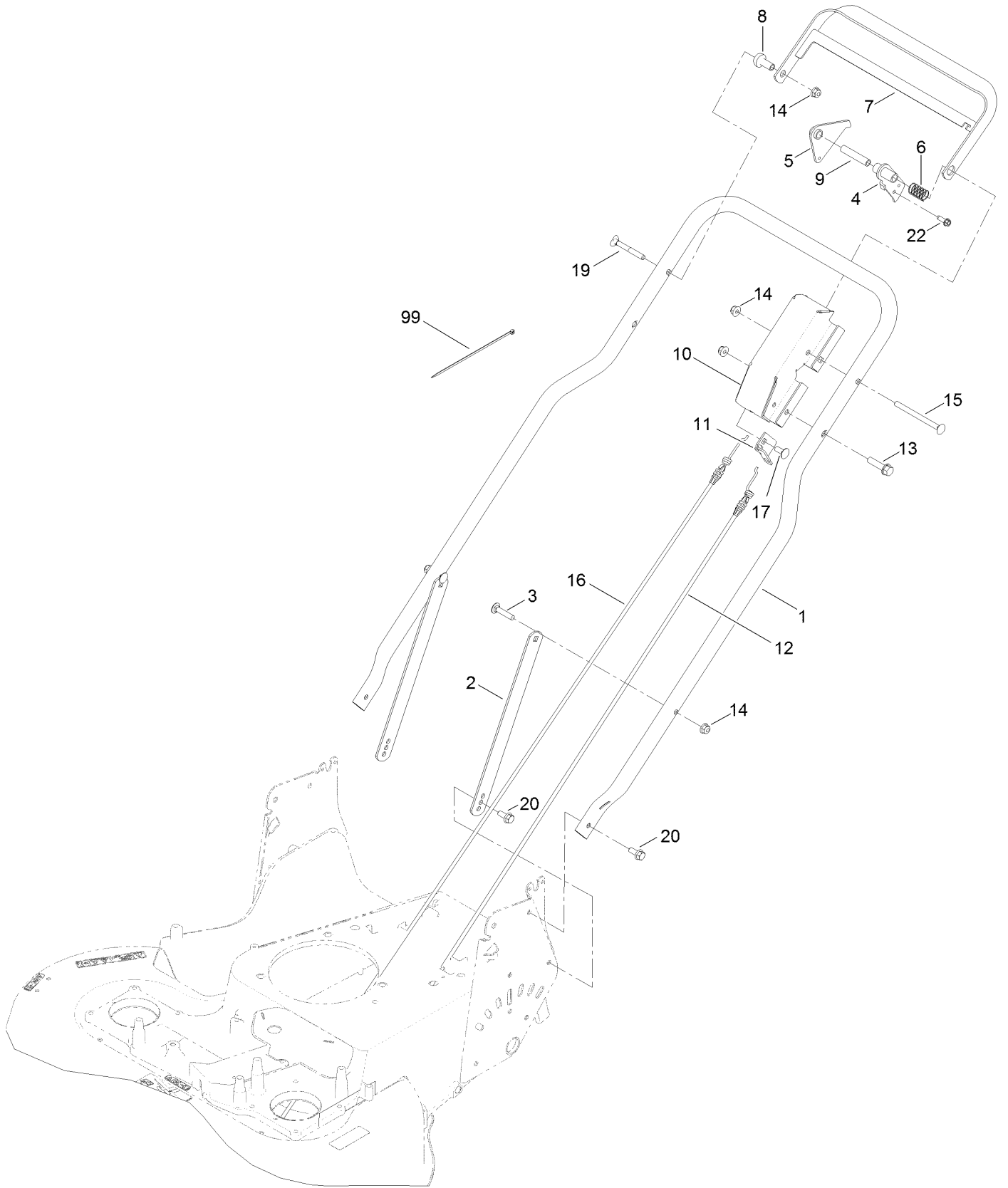
Traction and Height-of-Cut Assembly



Traction and Height-of-Cut Assembly (continued)

<i>Ref.</i>	<i>Part Number</i>	<i>Qty.</i>	<i>Description</i>	<i>Ref.</i>	<i>Part Number</i>	<i>Qty.</i>	<i>Description</i>
1	121-2394-03	1	LH HOC Plate ASM	19	121-2397	1	Bracket
2	121-2395-03	1	RH HOC Plate ASM	20	120-7095	1	Axle-Rear
3	701243	7	Screw-HWHTF	21	127-6865	1	Decal-HOC, Rear
4	120-5210	2	Retainer-Bearing	22	52-2860	1	Washer
5	109-8020	2	Bearing-Ball	23	119-2267	1	Screw-Shoulder, BHTF
6	110-9417	2	Gear-Pinion, 15T	24	120-9471	1	Bolt-Shoulder
7	32151-61	1	Ring-Retaining	25	120-7090	1	Lock-Height, Adjust
8	110-7191	2	Washer-Thrust	26	120-9452	1	Spring-Extension
10	125-2480	2	Cover-Gear	28	104-8300	1	Nut-Flange, NI
11	121-5821	1	Bracket-Stop	29	3230-2	1	Bolt-CARR
12	49-2040	2	Screw-HWHTF	30	104-8699	1	Bearing-Ball
13	121-2368	1	Spring-Torsion	31	130-6671	1	Transmission Kit
14	104-8301	2	Nut-Flange, NI	32	120-7008	1	Mount-Bearing
15	121-5799	1	Conduit-Convoluted	33	120-7027	1	Spring-Extension
16	121-5800	2	Conduit-Convoluted	34	36-4780	2	Washer-Plain
17	125-2540	1	Washer-Plain	35	3296-47	2	Nut-Lock, NI
18	125-5032	2	10 Inch Rear Wheel ASM	36	130-2369	2	Pin-Snap

Handle Assembly



Handle Assembly (continued)

<i>Ref.</i>	<i>Part Number</i>	<i>Qty.</i>	<i>Description</i>	<i>Ref.</i>	<i>Part Number</i>	<i>Qty.</i>	<i>Description</i>
1	121-5827-03	1	Handle	12	127-0741	1	Cable-Brake
2	116-8208-03	2	Support-Handle	13	32144-102	1	Screw-HWH
3	3230-4	2	Screw-CARR	14	104-8300	5	Nut-Flange, NI
4	121-5831	1	BBC Lever ASM	15	106-9758	1	Screw-CARR
5	121-9136	1	Lever-Traction	16	127-6868	1	Cable-Traction
6	85-6750	1	Spring-Control	17	3230-23	1	Screw-CARR
7	121-5829-03	1	Bar-Control	19	17-9427	1	Screw
8	49-1631	1	Spacer-Support	20	116-7230	4	Screw-HHF
9	84-9030	1	Spacer-Bracket, Control	22	49-2040	1	Screw-HWHTF
10	121-5789-03	1	Bracket-Control	99	614249	3	Tie-Cable
11	121-9166	1	Bracket				

Attachments and Accessories

For 22205TE 76cm TurfMaster Walk-Behind Lawn Mower

Product Name	Model/Part
Atomic Blade 15.4in.....	120-9500-03
Mulching Kit.....	125-5064
Idler Pulley Kit.....	126-7890

Notes:



Count on it.