



Wire Harness Kit

Groundsmaster® 360, 4000, 5900, or Reelmaster® 5010 Series
Traction Unit with 2 Post ROPS Extension

Model No. 122-0729

Installation Instructions

⚠ WARNING

CALIFORNIA Proposition 65 Warning

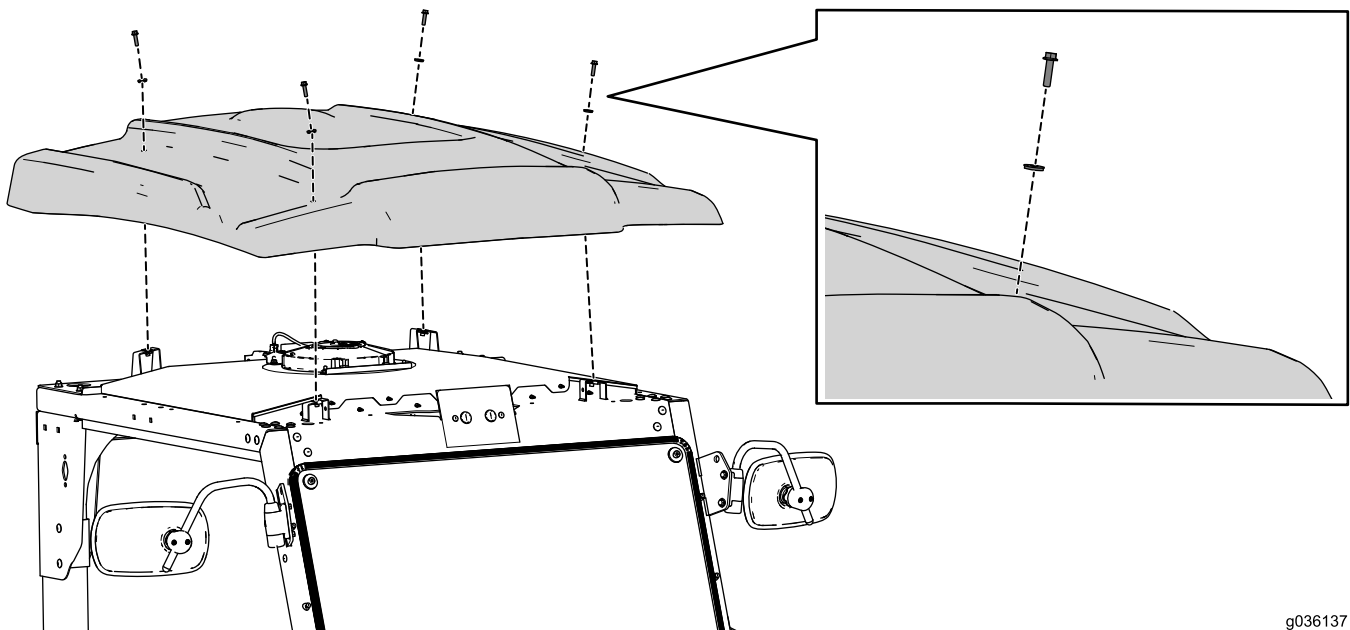
This product contains a chemical or chemicals known to the State of California to cause cancer, birth defects, or reproductive harm.

Install the wire harness kit to the 2-post ROPS extension when you need to provide power to electrical accessories.

Preparing the Machine

1. Move the machine to a level surface.
2. Set the parking brake, shut off the engine, and wait for all moving parts to stop before you leave the machine.
3. Remove the key from the ignition switch.
4. Ensure that the machine is secure from movement before you begin the installation.
5. Disconnect the negative (–) cable from the battery.

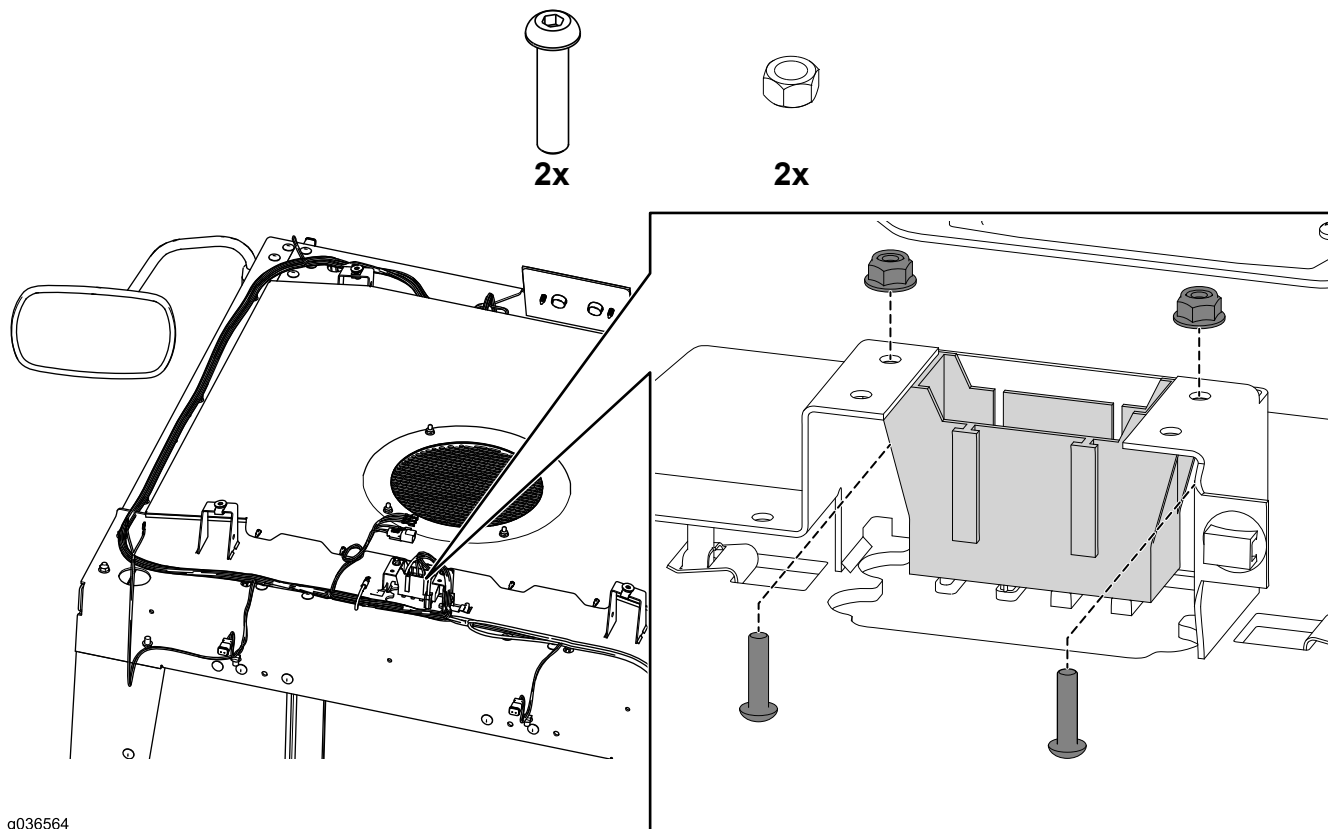
Removing the Top



g036137

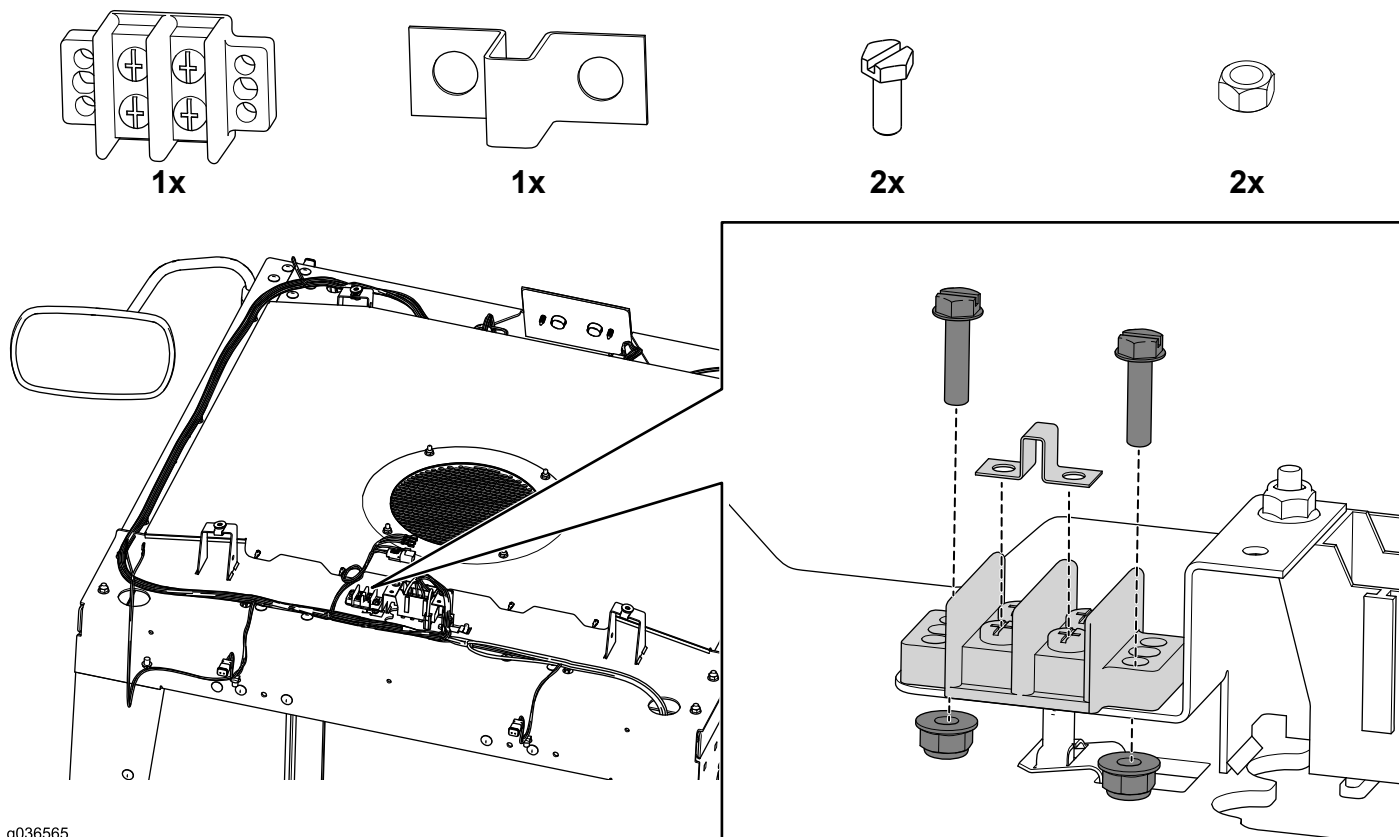


Installing the Fuse Block



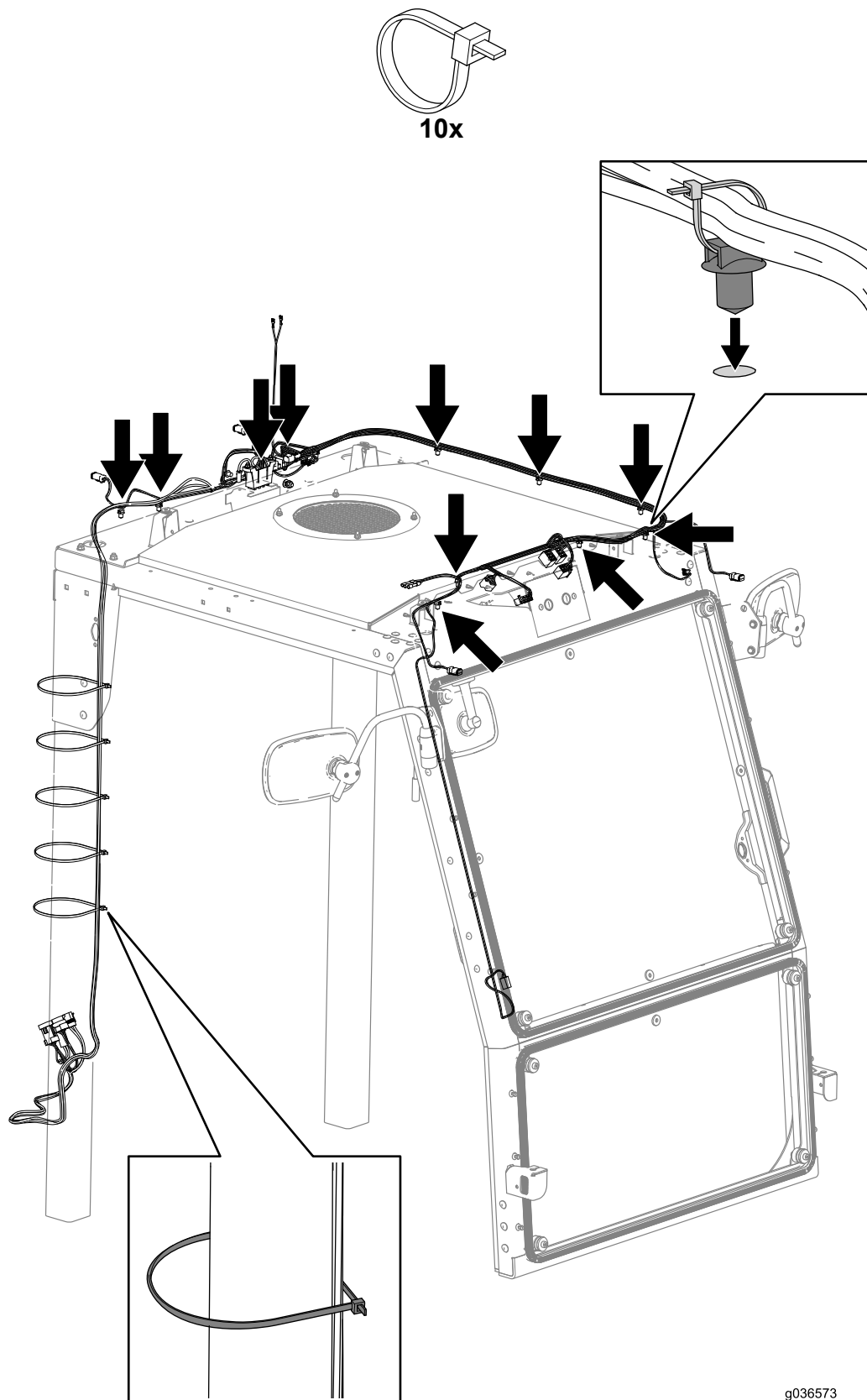
g036564

Installing the Ground Block



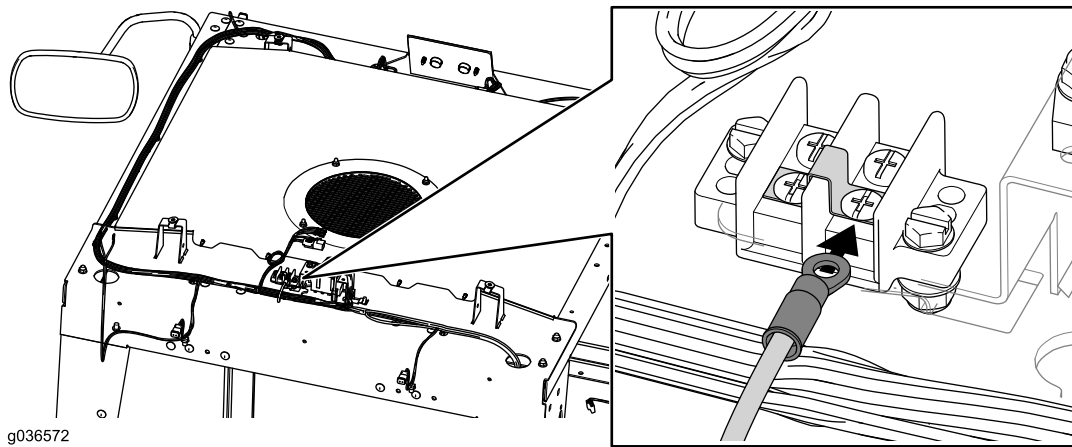
g036565

Routing and Securing the Wire Harness

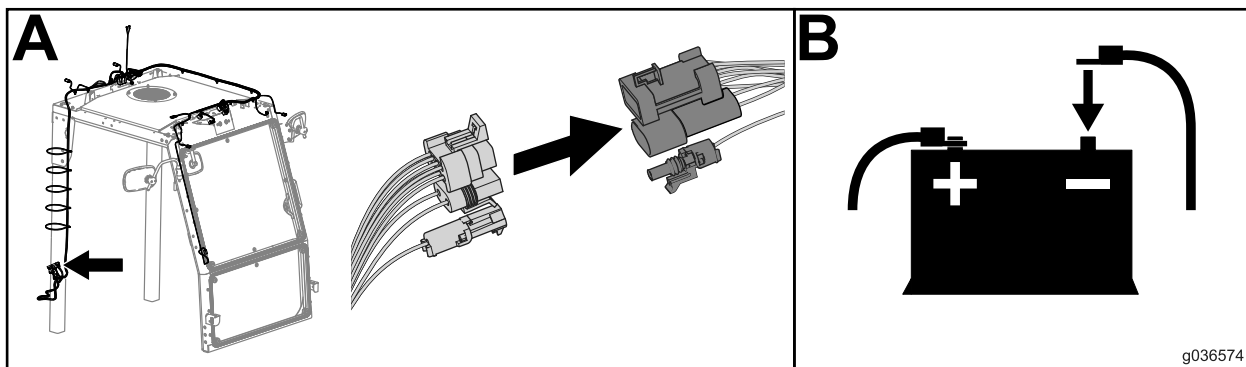


g036573

Connecting the Wire Harness to the Ground Block



Connecting the Wire Harness and Battery



Installing the Top

