



Differential Lock Kit

Groundsmaster® 360 2-Wheel Drive Multi-Purpose Machine

Model No. 30508

Installation Instructions

⚠ WARNING

CALIFORNIA Proposition 65 Warning

This product contains a chemical or chemicals known to the State of California to cause cancer, birth defects, or reproductive harm.

Note: Determine the left and right sides of the machine from the normal operating position.

Loose Parts

Use the chart below to verify that all parts have been shipped.

Procedure	Description	Qty.	Use
1	No parts required	–	Prepare the machine.
2	Mount plate Carriage screw (3/8 x 1 inch) Flange nut (3/8 inch) 90° fitting Differential lock valve Screw (1/4 x 2 inches) Flange nut (1/4 inch) Hose	1 2 2 1 1 2 2 1	Install the kit.
3	Switch Wire harness	1 1	Install the switch.
4	No parts required	–	Complete the installation.

1

Preparing the Machine

No Parts Required

Procedure

1. Park the machine on a level surface, lower the deck, engage the parking brake, shut off the engine, and remove the key from the ignition switch.
2. Disconnect the negative cable from the battery post; refer to the *Operator's Manual* for your machine.
3. Disconnect the positive cable from the battery post; refer to the *Operator's Manual* for your machine.

⚠ WARNING

Incorrect battery cable routing could damage the machine and cables causing sparks. Sparks can cause the battery gasses to explode, resulting in personal injury.

- Always disconnect the negative (black) battery cable before disconnecting the positive (red) cable.
- Always connect the positive (red) battery cable before connecting the negative (black) cable.



2

Installing the Differential Lock Kit

Parts needed for this procedure:

1	Mount plate
2	Carriage screw (3/8 x 1 inch)
2	Flange nut (3/8 inch)
1	90° fitting
1	Differential lock valve
2	Screw (1/4 x 2 inches)
2	Flange nut (1/4 inch)
1	Hose

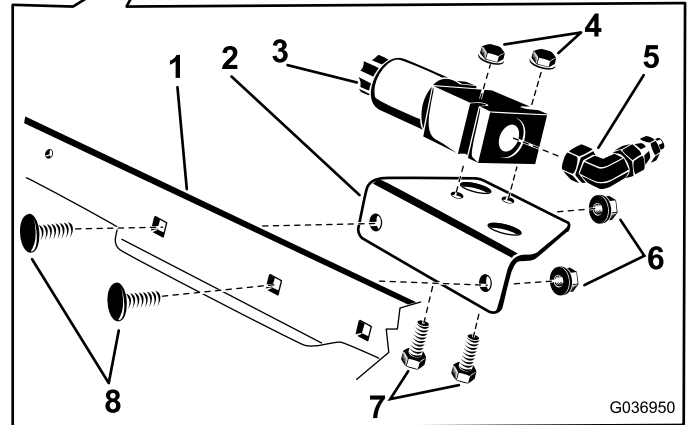


Figure 1

Procedure

1. Release and raise the seat. Make sure that the seat latch is engaged.
2. Install the mount plate to the frame cross member with 2 screws (3/8 x 1 inch) and 2 nuts (3/8 inch). Position the plate as shown in [Figure 1](#).

Note: Make sure that the O-rings are in place and lubricated with hydraulic fluid.

3. Install the 90° adapter fitting into the end of the differential lock valve, positioning as shown in [Figure 1](#).
4. Install the differential-lock valve to the mount plate with 2 screws (1/4 x 2 inch) and 2 nuts (1/4 inch). Position the differential-lock valve on the mount plate as shown in [Figure 1](#).

5. Disconnect the hose, shown in [Figure 2](#), from the 90° fitting on the right side of the transmission.
6. Install the disconnected end of the hose to the 90° adapter fitting on the differential-lock valve and tighten it securely ([Figure 2](#)).
7. Install the male end of the new hose to the port in the differential lock valve and tighten securely ([Figure 2](#)).

8. Install the female end of the new hose to the 90° fitting on the right side of the transmission (Figure 2).

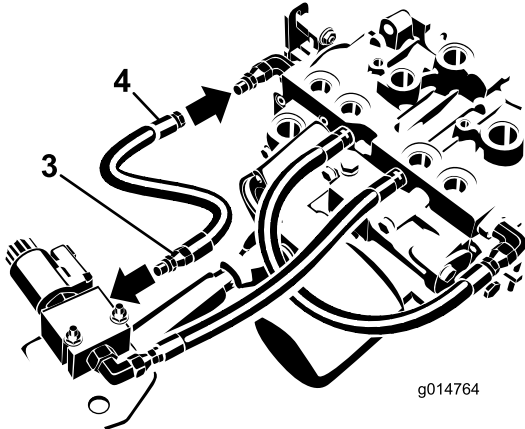
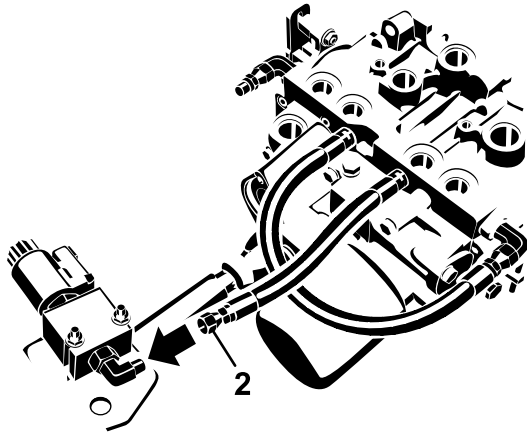
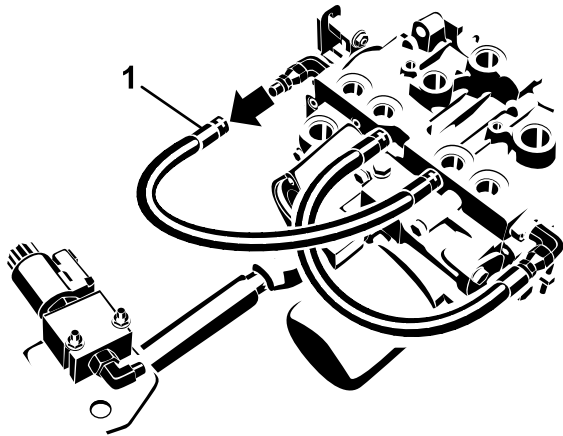


Figure 2

1. Disconnect the hose here.
2. Connect the hose here.
3. Connect the male end of the new hose here.
4. Connect the female end of the new hose here.

3

Installing the Switch

Parts needed for this procedure:

1	Switch
1	Wire harness

Procedure

1. Remove the plug from the control panel to expose the switch-mounting hole (Figure 3).
2. Insert the switch into the control-panel hole (Figure 3). Position the switch so that you press it forward.

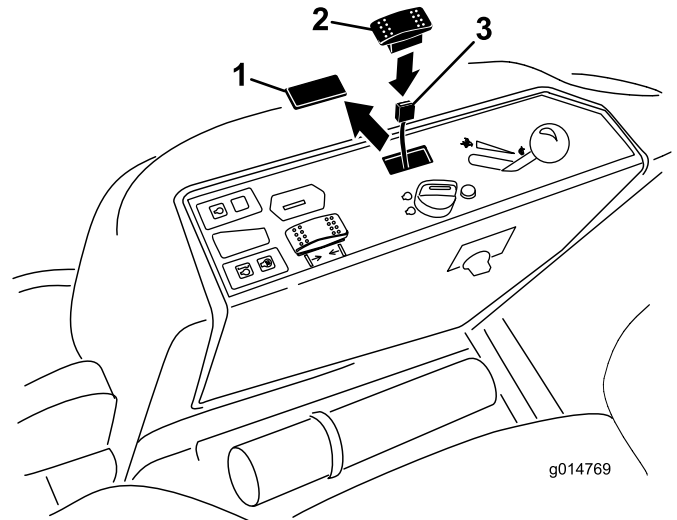


Figure 3

1. Plug
2. Switch
3. Harness

3. Remove the 5 button-head screws securing the control panel to the tank cover.
4. Raise the panel and plug the harness connector on the new wire harness into the switch.
5. Route the wire harness under the control panel and seat plate as shown in Figure 4.

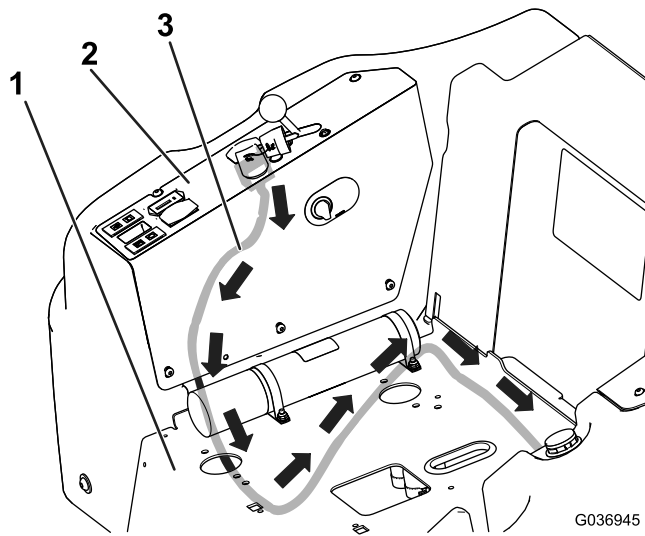


Figure 4

1. Seat plate
2. Control panel
3. New wire harness

6. Install the control panel with the button-head screws previously removed.
7. Plug the fuse block connector on the wire harness into the fuse block and plug the ground block connector into the ground block (Figure 5).

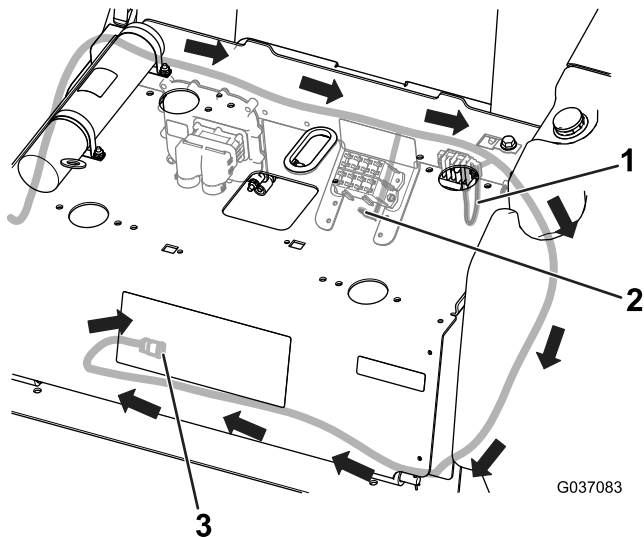


Figure 5

1. To the ground block
2. To the fuse block
3. To the differential lock valve

8. Plug the remaining harness connector into the differential lock valve located under the center of the seat plate (Figure 6).

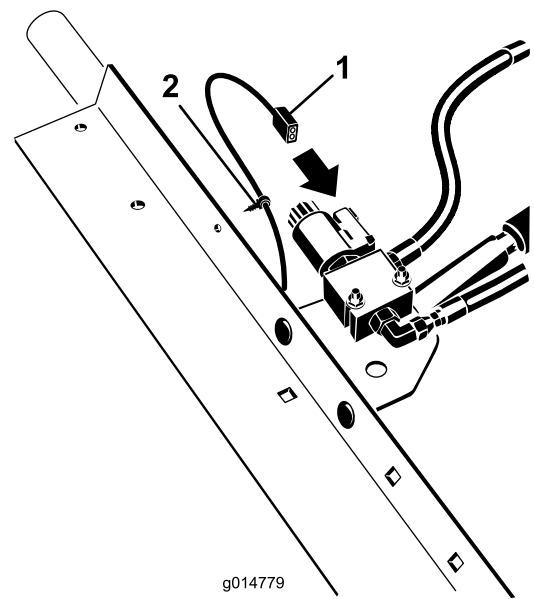


Figure 6

1. Harness connector
2. Harness clip

9. Disengage the seat latch and lower the seat.
10. Press the front of the switch and hold it down to engage the differential lock.

4

Completing the Installation

No Parts Required

Procedure

1. Connect the positive battery cable to the positive post of the battery; refer to the *Operator's Manual* for your machine.

⚠ WARNING

Incorrect battery cable routing could damage the machine and cables causing sparks. Sparks can cause the battery gasses to explode, resulting in personal injury.

- Always disconnect the negative (black) battery cable before disconnecting the positive (red) cable.
- Always connect the positive (red) battery cable before connecting the negative (black) cable.

2. Connect the negative cable from the battery post; refer to the *Operator's Manual* for your machine.