



**▲ WARNING**

**CALIFORNIA  
Proposition 65 Warning**

This product contains a chemical or chemicals known to the State of California to cause cancer, birth defects, or reproductive harm.  
The engine exhaust from this product contains chemicals known to the State of California to cause cancer, birth defects, or other reproductive harm.

**Loose Parts**

Use the chart below to verify that all parts have been shipped. Part numbers not shown are available on the dealer extranet.

<b>Dealer Pack</b>			
<b>Part No.</b>	<b>Description</b>	<b>Qty.</b>	<b>Use</b>
614249	Wire Ties	2	Positioning the cables on the handle bar.
—	Warranty Registration Reminder		Fill out the online warranty registration form.

<b>Literature Pack</b>
Manual, Operator's
Manual, Engine Operator's – Honda
Manual, Engine Operator's – Kawasaki



# Removing the Unit from the Box

Remove the unit from the box.

# Installing the Handle

1. Remove the mounting hardware from the mower housing and handle bracket.
2. Lift the handle brackets upward and mount the handle to the outside of the mower housing as shown in Figure 1. Torque the handle mount screw to 25 ft-lb (34 N-m).

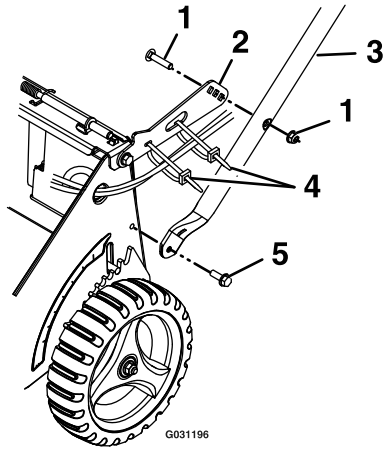


Figure 1

- |                            |                       |
|----------------------------|-----------------------|
| 1. Handle bracket hardware | 4. Wire tie           |
| 2. Handle bracket          | 5. Handle mount screw |
| 3. Handle                  |                       |

**Note:** The height of the handle can be adjusted for comfortable operation. Stand behind the handle to determine the height. To adjust the handle height, position the hardware into one of the three holes in the handle bracket.

# Installing and Routing the Cables-Except Honda Units

1. Remove the drive/brake cable assembly mounting hardware from the handle.
2. Route the cables of the drive/brake cable assembly on the handle as shown in Figure 1 and Figure 2.

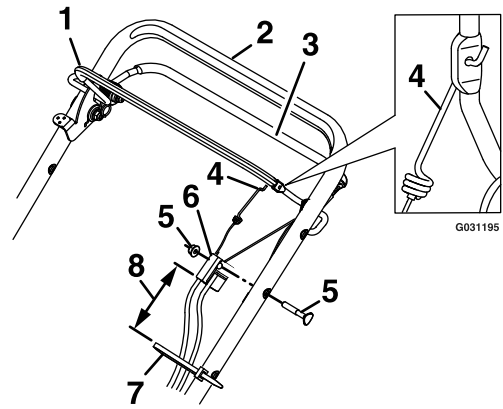


Figure 2

1. Engine brake/blade control bail
2. Handle
3. Drive bail (Self-Propelled Units Only)
4. Cable end
5. Mounting hardware
6. Drive/Brake cable assembly
7. Upper wire tie
8. 4 inches (10 cm)

3. Hook the ends of the drive/brake cable assembly to the blade and drive bails as shown in Figure 2.

**Note:** The top cable hooks to the engine brake/blade control bail; the bottom removable cable attaches to the drive bail.

4. Attach the drive/brake cable assembly to the handle and mount into the handle hole as shown in Figure 2. Do Not overtighten.
5. Route the cables tight against the inside of the handle. Use the two wire ties provided to secure the cables tight against the handle. Place the upper wire tie 4 inches (10 cm) below the drive/brake cable assembly as shown in Figure 2. Space the lower wire tie about 12 inches (30 cm) from the upper one, as shown in Figure 3. Make sure the cables are snug against the handle bracket. Trim the wire ties.

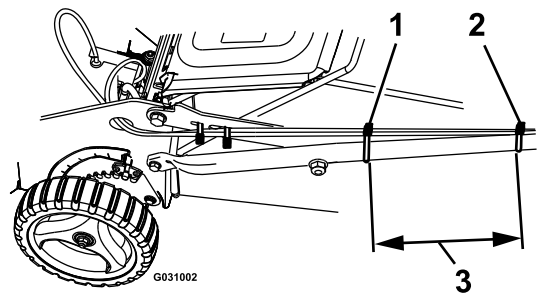


Figure 3

- |                   |                      |
|-------------------|----------------------|
| 1. Lower wire tie | 3. 12 inches (30 cm) |
| 2. Upper wire tie |                      |

## Installing and Routing the Cables-Honda Units

1. Remove the drive cable assembly mounting hardware from the handle.
2. Route the cables of the drive cable assembly on the handle as shown in Figure 1 and Figure 4.

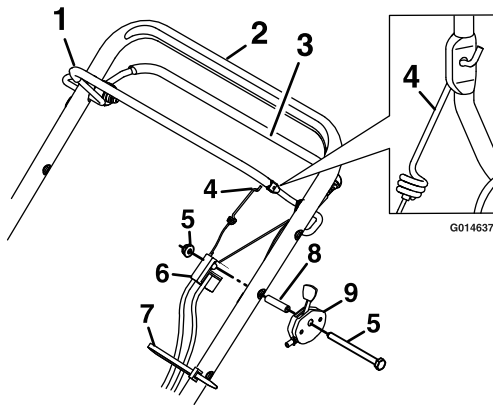


Figure 4

1. Blade control bail
2. Handle
3. Drive bail
4. Cable end
5. Mounting hardware
6. Drive cable assembly
7. Wire tie
8. Spacer
9. Throttle/Choke

3. Hook the ends of the drive cable assembly to the blade and drive bails as shown in Figure 4.

**Note:** The top cable hooks to the blade control bail; the bottom removable cable attaches to the drive bail.

4. Attach the drive cable assembly to the handle and mount into the handle hole as shown in Figure 4.
5. Route the cables tight against the inside of the handle. Use the two wire ties provided to secure the cables.
6. Trim the wire ties.

## Installing the Starter Rope (Zone Start Units Only)

Squeeze the engine brake bail and pull the starter rope from the engine through the rope guide on the handle.

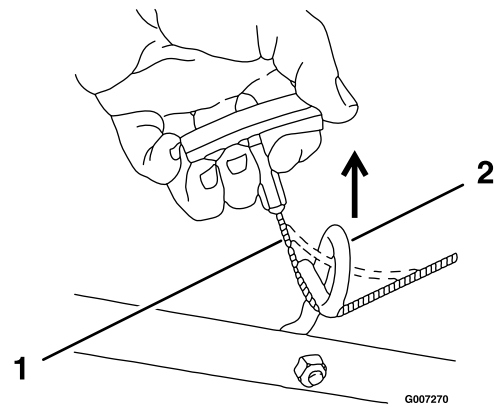


Figure 5

1. Starter rope
2. Rope guide

## Installing the Fuel Tank (If Shipped Loose):

1. Remove the screw(s) from the underside of the fuel tank.

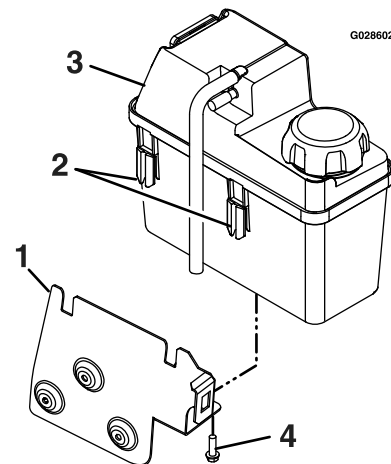


Figure 6

1. Fuel tank bracket
2. Plastic clips
3. Fuel tank
4. Self-tapping screw(s)

2. Hook the plastic clips on the front of the fuel tank onto the fuel tank bracket.
3. Secure the fuel tank to the tank bracket with the self-tapping screw(s) as shown in Figure 6. Torque to 40-50 in-lb (4-6 N-m). Do Not overtighten the screw(s).
4. Slide the end of the fuel line onto the elbow fitting.
5. Secure the fuel line in place with the fuel line clamp.

## Service the Engine

**Important:** The mower does not come with oil in the engine.

Filling the crankcase with oil

### For units with Honda Engines:

The engine crankcase can hold 22 ounces (0.65 liters) of oil. Exmark 4-Cycle Premium Engine Oil is recommended. Refer to the Engine Owner's Manual for an appropriate API rating and viscosity. **Do Not** overfill.

Before each use, ensure that the oil level is between the lower limit and upper limit marks on the dipstick (Figure 7).

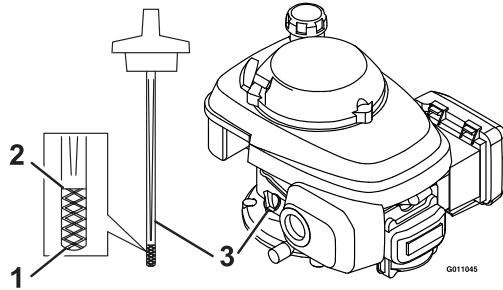


Figure 7

1. Lower limit mark
2. Upper limit mark
3. Dipstick

### For Units with Kawasaki Engines:

Initially, fill the crankcase with 30 ounces (0.88 liters) of oil. Exmark 4-Cycle Premium Engine Oil is recommended. Refer to the Engine Owner's Manual for an appropriate API rating and viscosity. **Do Not** overfill.

Oil Capacity	
With Oil Filter	30 ounces (0.88 L)
Without Oil Filter	24 ounces (0.70 L)

Before each use, ensure that the oil level is between the Add and Full marks on the dipstick (Figure 8).

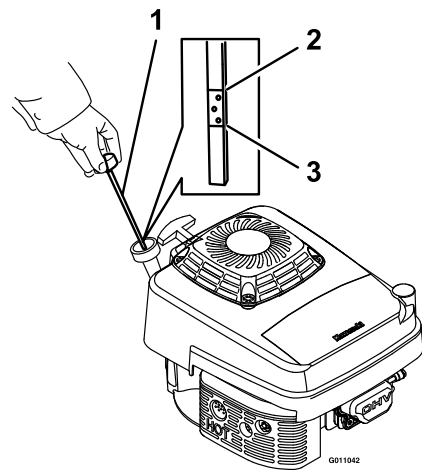


Figure 8

1. Dipstick
2. Full
3. Add

**Important:** Do Not operate the engine with the oil level below the “LOW” (or “ADD”) mark on the dipstick, or over the “FULL” mark.

## Installing the Grass Bag

1. Stop the engine and wait for all moving parts to stop.
2. Open the rear door.
3. Grasp the handle on the bag and set the rear of the bag frame onto the door hinge bracket (Figure 9).

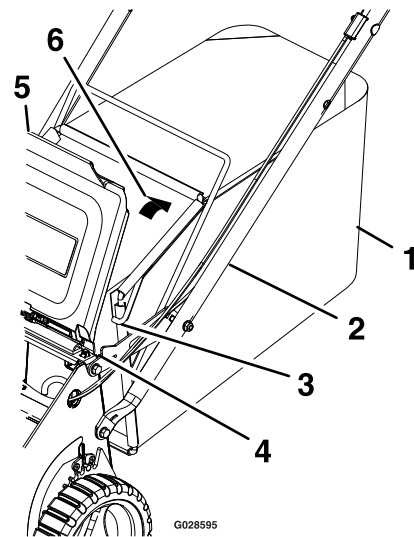


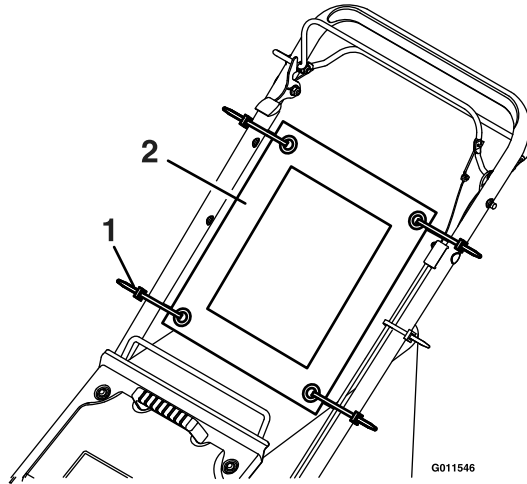
Figure 9

1. Bag
2. Handle
3. Bag frame
4. Door hinge bracket
5. Rear door
6. Lower

4. Once the bag is seated, lower the rear door onto the bag.

## Attaching the Product Banner

If provided, tie wrap the product banner to the handle as shown in Figure 10.



**Figure 10**

1. Tie wrap

2. Product banner

---

## Check the Cable Adjustments

Follow the procedures in the manuals to ensure the self-propel drive and BBC cables have been adjusted properly.

## Check the Blade Control Lock Lever (BBC Units Only)

Check the operation of the blade control lock lever; see the Operator's manual for adjustment.

## Filling Out the Product Registration

Fill out the online warranty registration form.