



Bench Seat Base Kit

Workman® GTX Series Utility Vehicles

Model No. 07135

Form No. 3407-201 Rev A

Installation Instructions

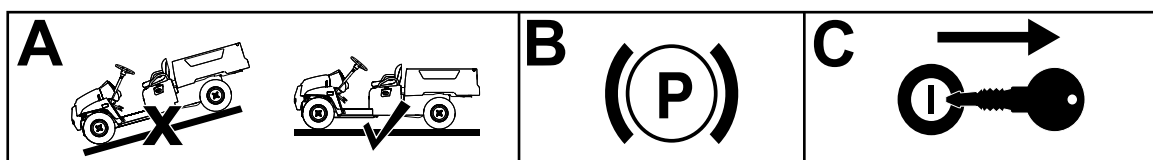
⚠ WARNING

CALIFORNIA Proposition 65 Warning

This product contains a chemical or chemicals known to the State of California to cause cancer, birth defects, or reproductive harm.

Preparing the Machine

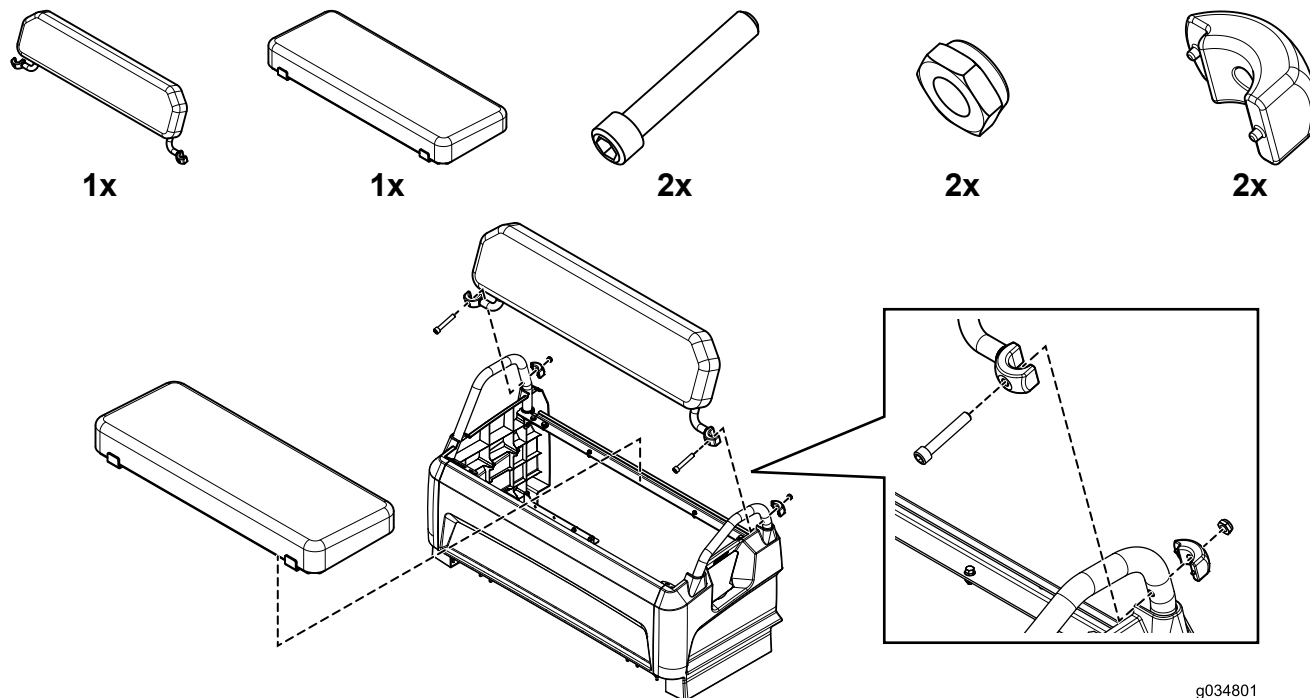
1. Park the machine on a level surface (box A of [Figure 1](#)).
2. Set the parking brake (box B of [Figure 1](#)).
3. Remove the key from the ignition switch (box C of [Figure 1](#)).



g036808

Figure 1

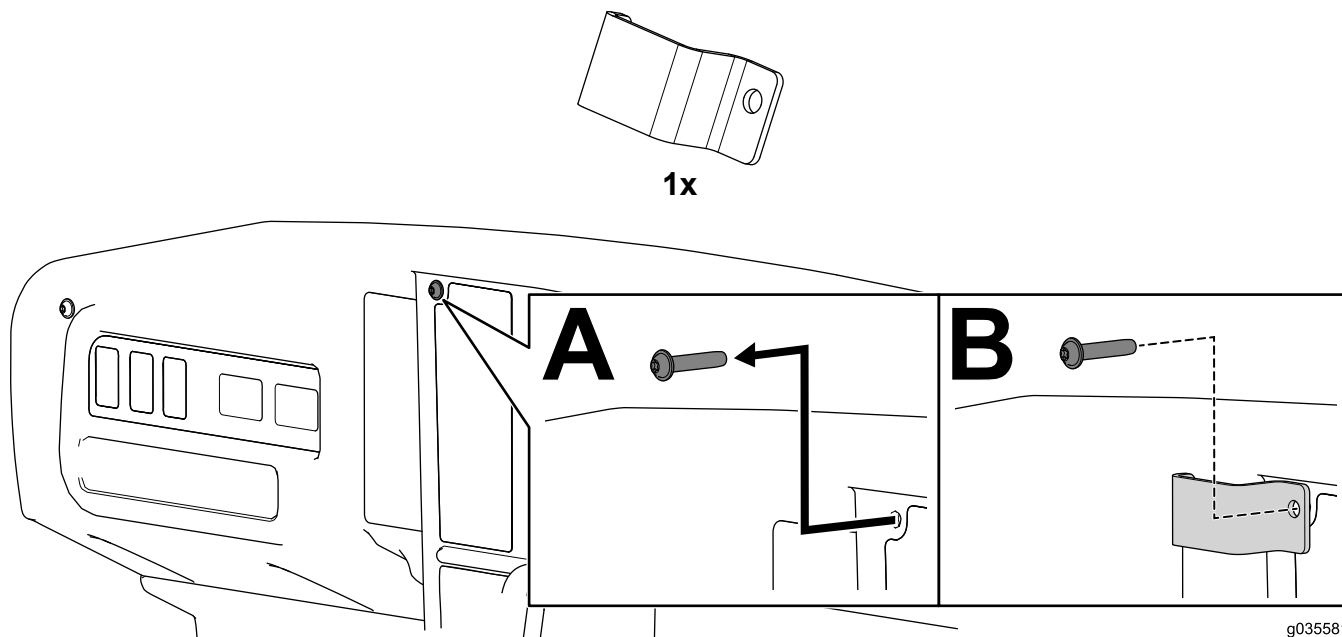
Installing the Seat Assembly



g034801



Installing the Radio Mount

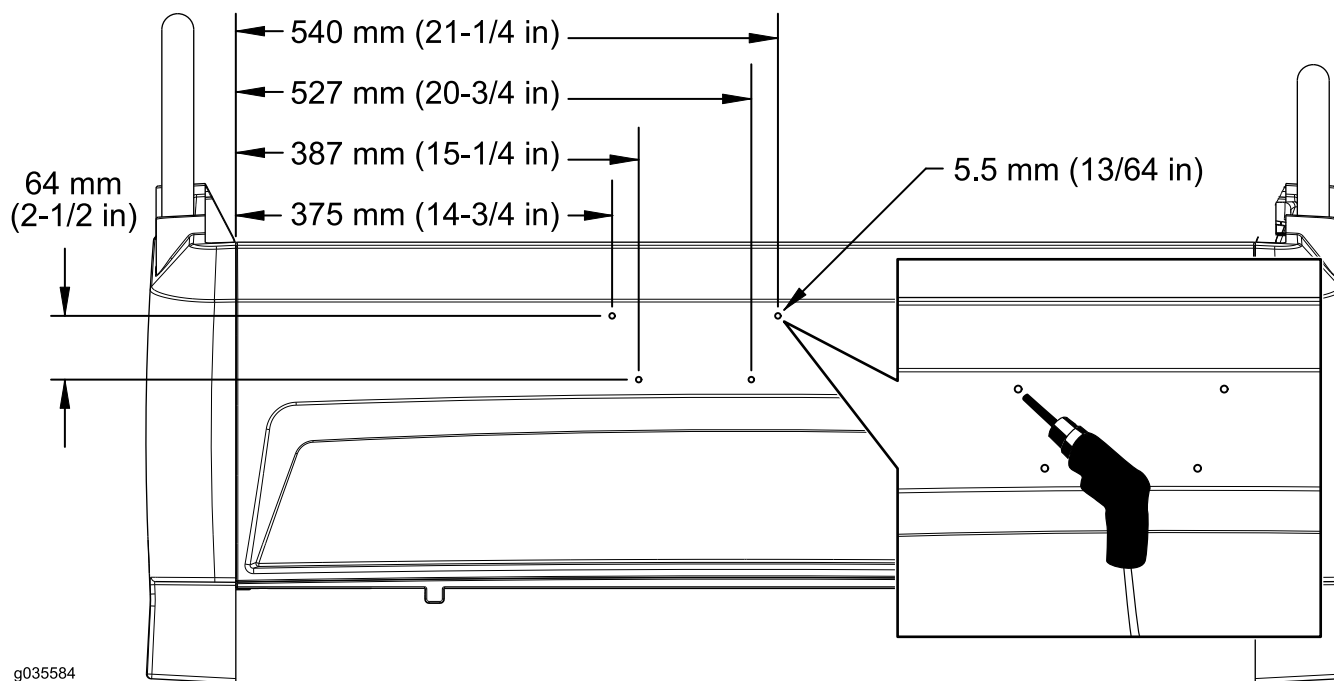


Drilling the Accessory Holes

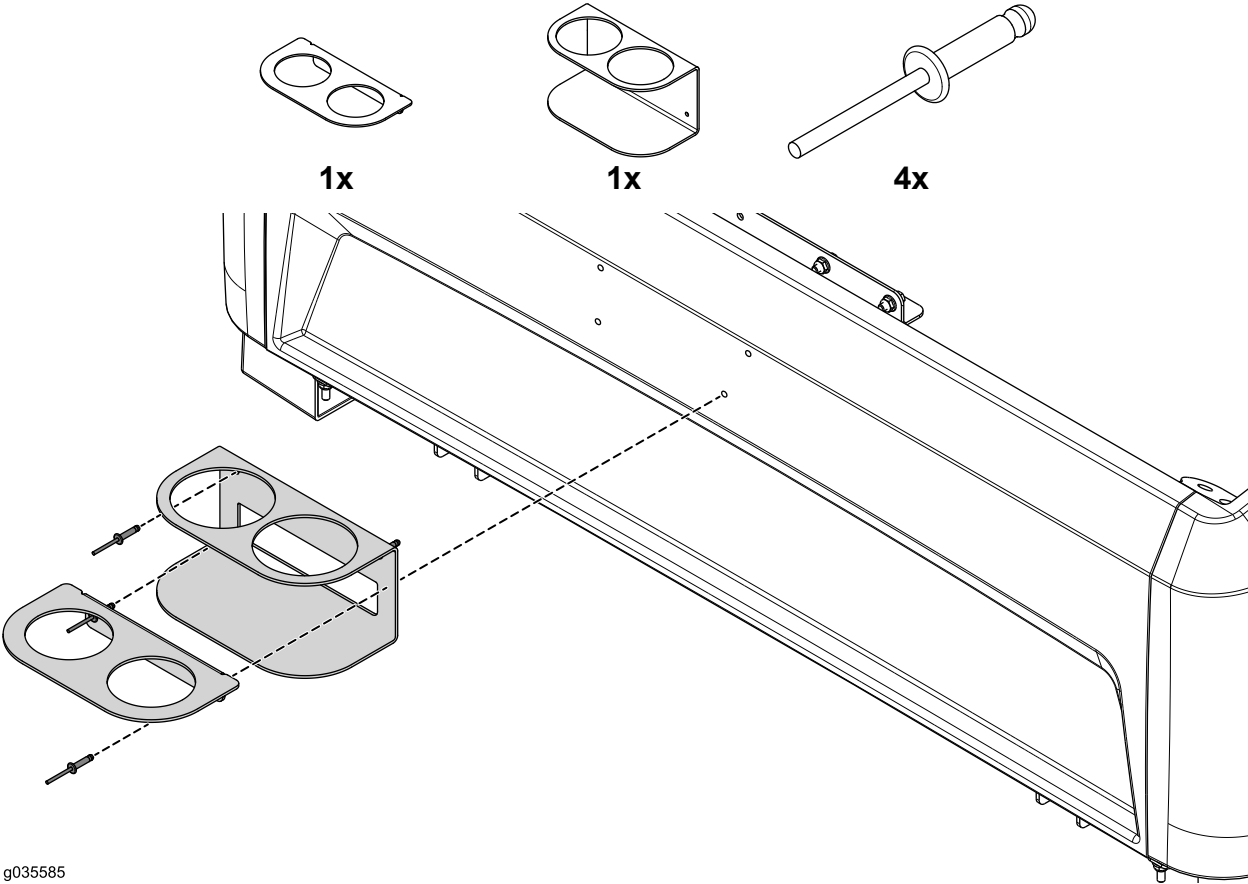
⚠ CAUTION

When drilling holes into the seat base of the Workman GTX Electric Utility Vehicle, you can drill into the battery, spraying battery acid or resulting in electrical shock.

Do not drill into the battery.



Mounting the Accessory



g035585



Count on it.