



Road Light and Homologation Kit

Workman® GTX Series Utility Vehicle

Model No. 133-7128

Installation Instructions

⚠ WARNING

CALIFORNIA Proposition 65 Warning

This product contains a chemical or chemicals known to the State of California to cause cancer, birth defects, or reproductive harm.

Note: The Brake and Signal Kit (Toro Part No. 132-8579 for the Workman GTX or 133-7127 for the Workman GTX Electric) must be installed on the machine to install this kit.

Loose Parts

Use the chart below to verify that all parts have been shipped.

Procedure	Description	Qty.	Use
1	No parts required	–	Prepare the machine.
2	Headlight Headlight adapter Cable tie	2 2 5	Install the headlights.
3	Wire harness Plate light Phillips-head screw (#10 x 5/8 inch) Locknut (#10) Plate bracket Push fastener	1 2 4 4 1 2	Install the plate bracket and wire harness.
4	Serial plate	1	Install the serial plate.
5	Speed plate Plate-mount bracket Pop rivet (3/16 x 0.92 inch)	3 2 17	Install the speed plates.
6	No parts required	–	Complete the installation.



1

Preparing the Machine

No Parts Required

Procedure

1. Move the machine to a level surface (box A of [Figure 1](#)).
2. Engage the parking brake (box B of [Figure 1](#)).
3. Remove the key from the ignition switch (box C of [Figure 1](#)).
4. Remove the negative battery cable from the battery (box D of [Figure 1](#)).



G037523

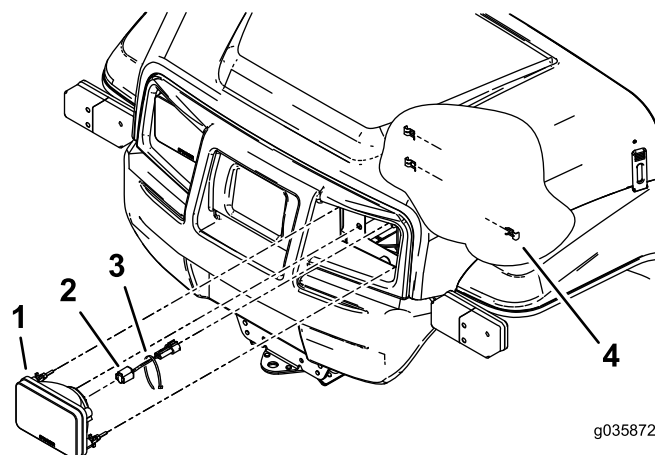
Figure 1

2

Installing the Headlights

Parts needed for this procedure:

2	Headlight
2	Headlight adapter
5	Cable tie



g035872

Figure 2

Procedure

1. Remove the existing left and right headlights from the headlight positions.
2. Install a headlight adapter to each headlight ([Figure 2](#)).
3. Install the headlights into the front of the machine and secure them with the existing clips ([Figure 2](#)).
4. Secure the electrical connector on the headlight adapter to the machine wire harness electrical connector with the cable ties ([Figure 3](#)).

3

Installing the Plate Bracket and Wire Harness

Parts needed for this procedure:

1	Wire harness
2	Plate light
4	Phillips-head screw (#10 x 5/8 inch)
4	Locknut (#10)
1	Plate bracket
2	Push fastener

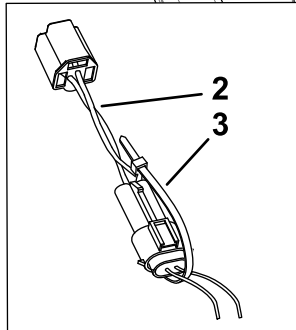


Figure 3

1. Nut with the clip installed
2. Headlight connection
3. Secure the connections with cable ties.

Installing the Push Fasteners

1. Beneath the cargo bed, measure 267 mm (10-1/2 inches) rearward from the edge of the frame cross tube and 38 mm (1-1/2 inches) inward from the edge of the right sway-bar mount, and mark the location (Figure 4).

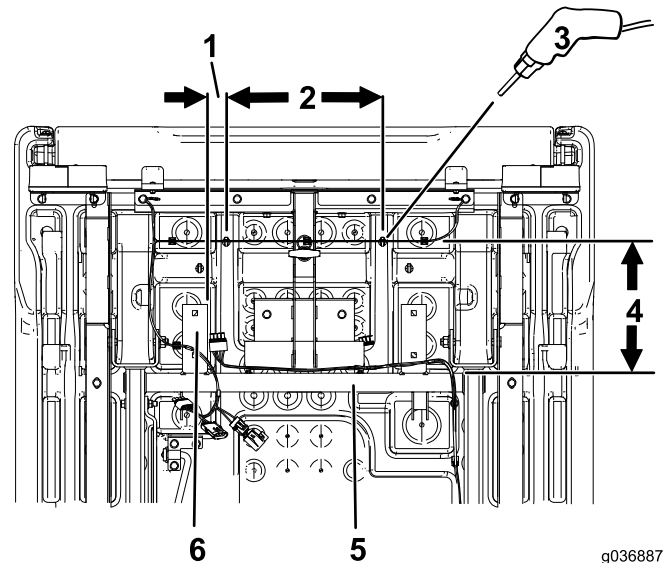


Figure 4

1. 38 mm (1-1/2 inches)
2. 318 mm (12-1/2 inches)
3. Drill a 6.35 mm (1/4 inch)
4. 267 mm (10-1/2 inches)
5. Frame cross tube
6. Right sway-bar mount hole.

2. Beneath the cargo bed, measure 267 mm (10-1/2 inches) rearward from the edge of the frame cross tube and 38 mm (1-1/2 inches) inward from the edge of the left sway-bar mount, and mark the location (Figure 4).

Note: The distance between the 2 locations should be 267 mm (10-1/2 inches)

3. Drill 2 holes (6.35 mm or 1/4 inch diameter) in the plastic cargo bed (Figure 4).
4. Install the 2 push fasteners into the holes.

Installing the Plate Bracket and Wire Harness

1. Remove the 4 existing flange-head bolts from the underside of the cargo bed and use them to install the plate bracket (Figure 5).

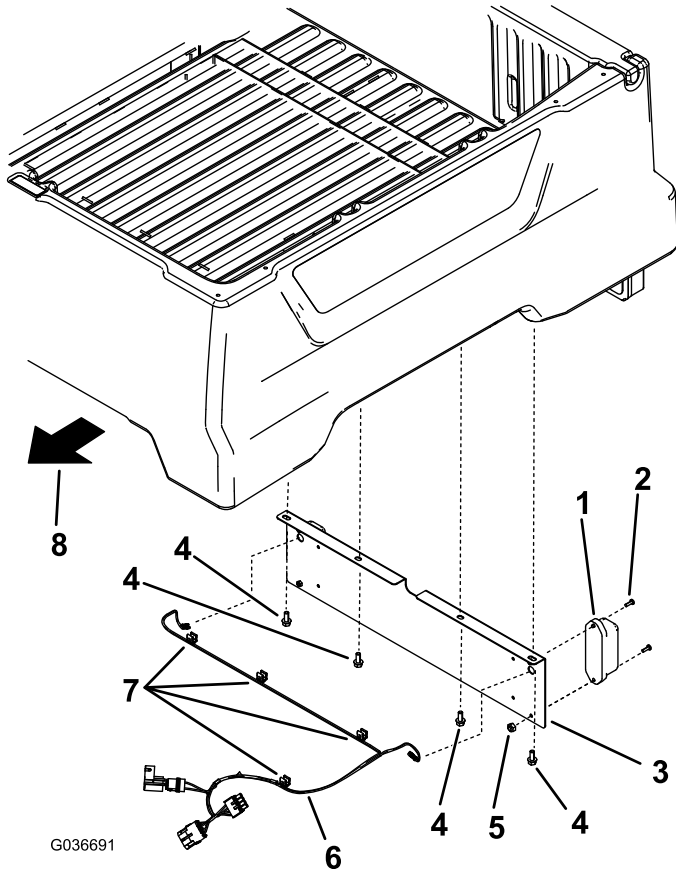


Figure 5

- | | |
|---|---------------------------|
| 1. Plate light | 5. Locknut (#10) |
| 2. Phillips-head screw (#10 x 5/8 inch) | 6. Wire harness |
| 3. Plate bracket | 7. Edge clips |
| 4. Existing bolts | 8. Front of the cargo bed |

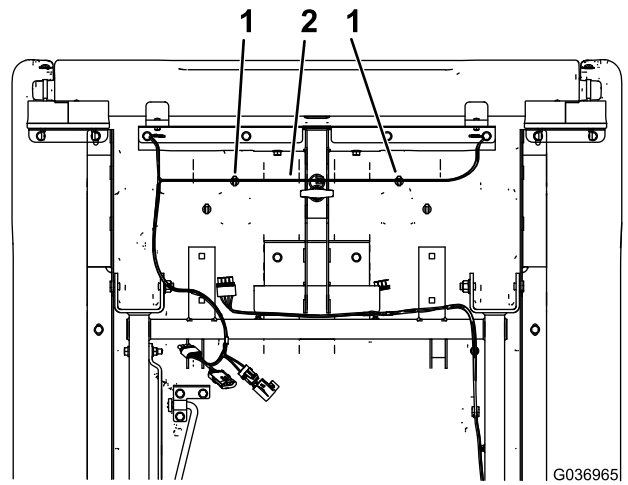


Figure 6

- | | |
|-------------------|-----------------|
| 1. Push fasteners | 2. Wire harness |
|-------------------|-----------------|

4. Insert the wires through the large holes in the plate bracket and connect to the 2 plate lights (Figure 7).

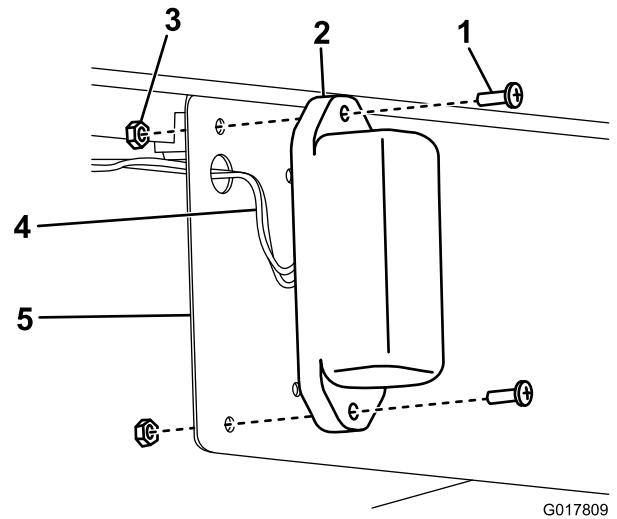


Figure 7

- | | |
|---|------------------|
| 1. Phillips-head screw (#10 x 5/8 inch) | 4. Wire harness |
| 2. Plate light | 5. Plate bracket |
| 3. Locknut | |

2. Remove the existing edge clips from the wire harness (Figure 5).
3. Secure the wire harness to the push fasteners under the cargo bed using the cable ties on the fasteners (Figure 6).

5. Install the plate lights to the plate bracket using the 4 Phillips-head screws (#10 x 5/8 inch) and 4 locknuts (#10) as shown in [Figure 7](#).
6. Unplug the left taillight wire harness from the Brake and Signal Kit wire harness.
7. Connect the wire harness from this kit to the left taillight wire harness and the Brake and Signal Kit wire harness.

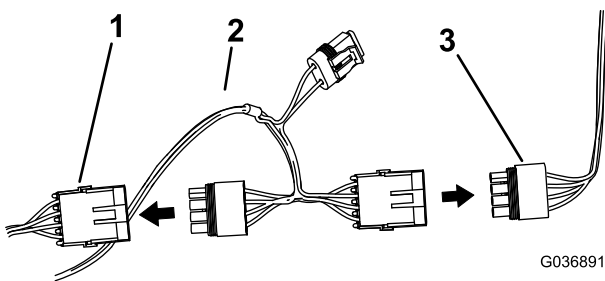


Figure 8

1. Left taillight wire harness
2. Wire harness from this kit
3. Brake and Signal Kit wire harness

8. Use cable ties to secure the wire harness to the machine.

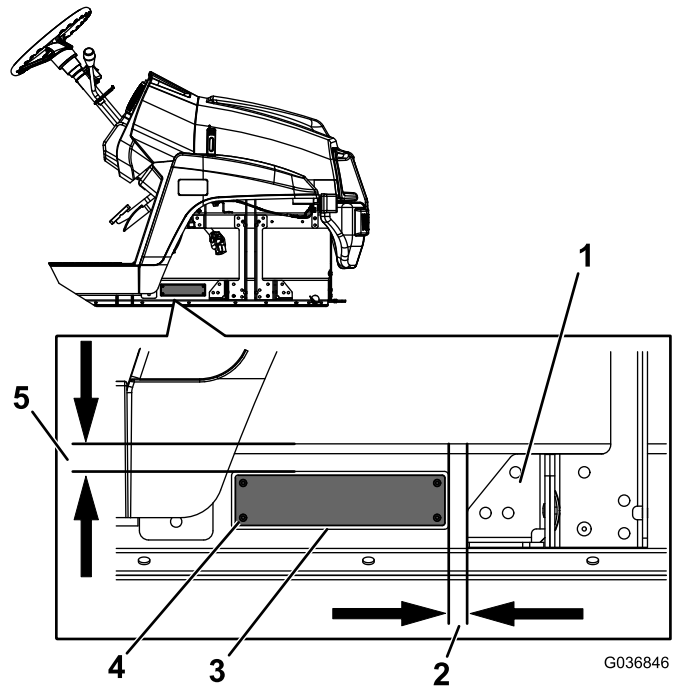


Figure 9

Tire Not Shown

1. Bracket
2. 13 mm (1/2 inch) left of the bracket
3. Serial plate
4. Rivet
5. 19 mm (3/4 inch) below edge of the frame

2. Stamp the serial number on the machine in the location shown in [Figure 10](#).

Note: The text size must be 7 mm (0.28 inches) or larger.

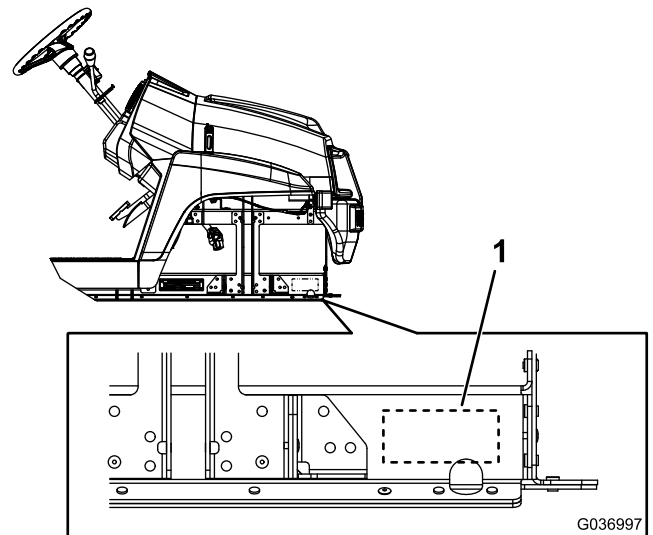


Figure 10

Tire Not Shown

1. Stamp the serial number here.

4

Installing the Serial Plate

Parts needed for this procedure:

1	Serial plate
---	--------------

Procedure

1. Install the serial plate using 4 rivets in the location shown in [Figure 9](#).

5

Installing the Speed Plates

Parts needed for this procedure:

3	Speed plate
2	Plate-mount bracket
17	Pop rivet (3/16 x 0.92 inch)

Installing the Speed Plates to the Seat Base Sides

1. On the left side of the machine, measure 51 mm (2 inches) from bottom, left of the seat base side, and mark this location (Figure 11).
2. Measure 57 mm (2.25 inches) directly above the location and mark this location (Figure 11).
3. Measure 83 mm (3.25 inches) from the left of the location marked in step 2, and mark this location (Figure 11).
4. Measure 80 mm (3.16 inches) from the left of the location marked in step 3, then measure 299 mm (11.78 inches) directly above this location, and mark this location (Figure 11).
5. Measure 83 mm (3.25 inches) from the right of the location marked in step 4, and mark this location (Figure 11).
6. Drill a 5 mm (13/64 inch) hole at each of the 4 marked locations (Figure 11).

⚠ CAUTION

Use caution when drilling the holes into the seat base sides.

On the Workman GTX Gasoline Utility Vehicle, the fuel tank resides behind the seat base side on the driver's side of the machine, and the battery resides behind the seat base side on the passenger's side of the machine.

On the Workman GTX Electric Utility Vehicle, the battery charger resides behind the seat base side on the driver's side of the machine.

If you drill too far into the seat base sides, you may damage these components.

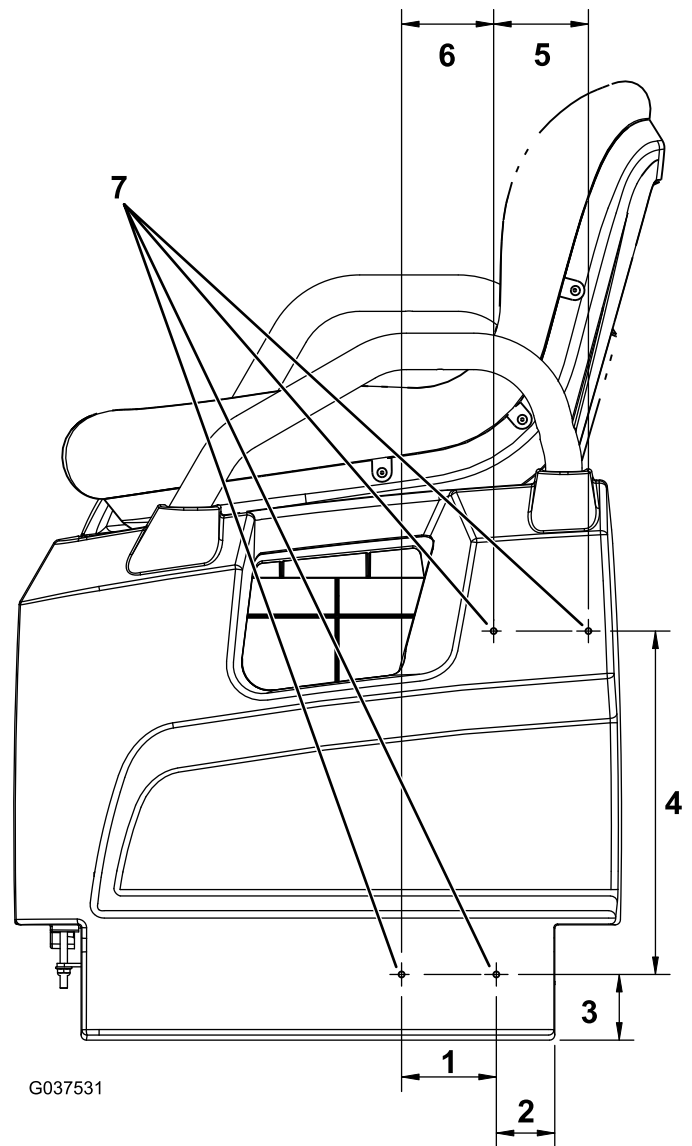


Figure 11
Left Side of the Machine Shown

- | | |
|--------------------------|--------------------------------|
| 1. 83 mm (3.25 inches) | 5. 83 mm (3.25 inches) |
| 2. 51 mm (2 inches) | 6. 80 mm (3.16 inches) |
| 3. 57 mm (2.25 inches) | 7. Drill at these 4 locations. |
| 4. 299 mm (11.78 inches) | |

7. Install the plate-mount bracket to the seat base side using 4 pop rivets (3/16 x 0.92 inch) as shown in [Figure 12](#).

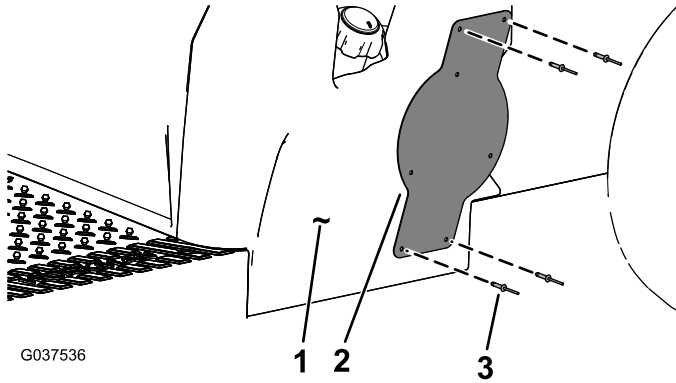


Figure 12

Left Side of the Machine Shown

1. Seat base side
2. Plate-mount bracket
3. Pop rivet (3/16 x 0.92 inch)

8. Install the speed plate to the plate-mount bracket using 3 pop rivets (3/16 x 0.92 inch) as shown in [Figure 13](#).

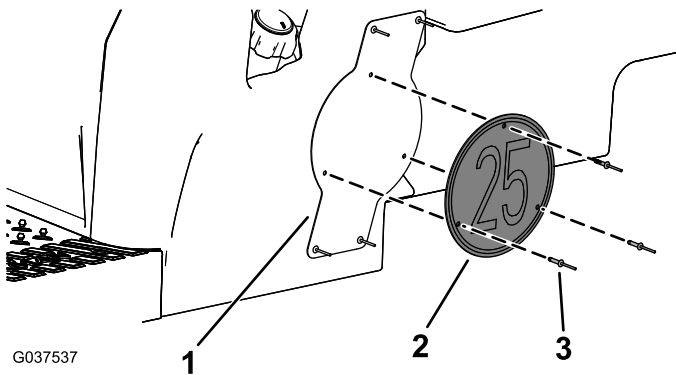


Figure 13

Left Side of the Machine Shown

1. Plate-mount bracket
2. Speed plate
3. Pop rivet (3/16 x 0.92 inch)

9. Repeat the procedure for the right side of the machine.

Installing the Speed Plate to the Tailgate

1. On the right side of the tailgate, measure 95 mm (3.75 inches) from the right edge of the tailgate and 70 mm (2.75 inches) from the top of the tailgate, and mark the location ([Figure 14](#)).
2. Measure 128 mm (5.02 inches) down from the hole marked in step 1 and 74 mm (2.9 inches) to the right and left and mark the 2 locations ([Figure 14](#)).
3. Drill a 5 mm (13/64 inch) hole at each of the 3 marked locations ([Figure 14](#)).

Important: Drill through only 1 wall of the tailgate.

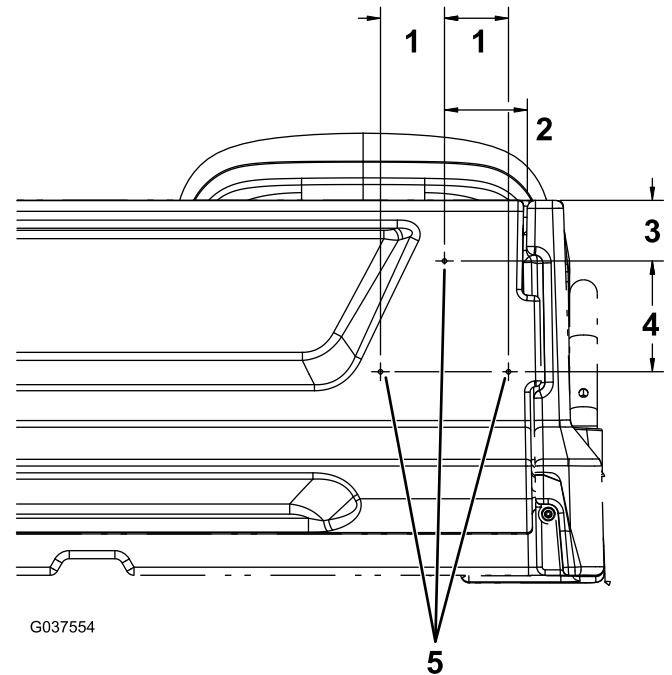


Figure 14

1. 74 mm (2.9 inches)
2. 95 mm (3.75 inches)
3. 70 mm (2.75 inches)
4. 128 mm (5.02 inches)
5. Drill at these 3 locations.

4. Install the speed plate to the tailgate using 3 pop rivets (3/16 x 0.92 inch) as shown in [Figure 15](#).

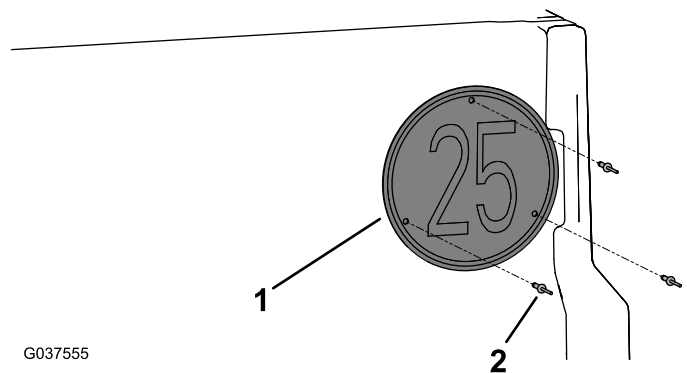


Figure 15

1. Speed plate
2. Pop rivet (3/16 x 0.92 inch)

6

Completing the Installation

No Parts Required

Procedure

Install the negative battery cable to the battery.