



Count on it.

Parts Catalog

48in Blower and Drive Kit

**E-Z Vac™ Standard Bagger for TITAN® HD
1500 or 2000 Series Riding Mower**

Model No. 78483—Serial No. 400010798 and Up



Ordering Replacement Parts

To order replacement parts, please supply the part number, the quantity, and the description of each part desired.

Understanding Reference Numbers

Each identified part in an illustration has a reference number. The reference number for a part also appears in the parts list, along with other information about the part.

This catalog uses two special reference number formats, one to indicate parts in a service assembly and another to indicate the quantity of a given part in an illustration.

Service Assembly Reference Numbers

Parts in service assemblies have reference numbers in the form a:b. The a represents the reference number of the entire service assembly and the b represents a sequential number unique to each part within the service assembly.

For example, a wheel assembly might be identified by reference number 6, the tire by 6:1, the valve by 6:2, and the wheel by 6:3. When you order the assembly identified by reference number 6, you receive all parts identified by reference numbers 6:1, 6:2, and 6:3. However, you may also order any part individually. Reference numbers of this type appear in illustration and in parts lists.

Reference Numbers Indicating Quantity

In an illustration, if a reference number indicates more than one part, the reference number has the form nX y. The n represents the quantity of the part, the X is the multiplication symbol, and the y represents the reference number.

For example, in an illustration, the reference number 2X 37 means that two of the parts identified by reference number 37 are indicated.

List of Abbreviations

AR: as required

ASM: assembly

BBC: blade brake control

BHTF: button head thread forming

CARR: carriage

CCW: counter clockwise

CW: clockwise

DEG: degrees

DPA: Dual Point Adjustment

ECM: electronic control module

EXT: external

FH: flat head

GA: gauge

HD: heavy-duty

HF: hex flange

HH: hex head

HHF: hex head flange

HHFTF: hex head flange thread forming

HJ: hex jam

HLH: hex lag head

HOC: height-of-cut

HP: high pressure

HSBH: hex socket button head

HSFH: hex socket flat head

HSH: hex socket head

HWH: hex washer head

HWHTF: hex washer head thread forming

HYD: hydraulic

LH: left hand

LP: low pressure

LPG: Liquefied Petroleum Gas

NI: nylon insert

NPTF: national pipe thread fine

PFH: phillips flat head

PPH: phillips pan head

PPHTF: phillips pan head thread forming

PRH: phillips round head

PTH: phillips truss head

PTO: power-take-off

RH: right hand

ROPS: roll-over protection system

RRB: rear roller brush

SFH: slotted fillister head

SHH: slotted hex head

SHWH: slotted hex washer head

SPH: slotted pan head

SQH: square head

SRH: slotted round head

STD: standard

TAP: self tapping

TTH: torx truss head

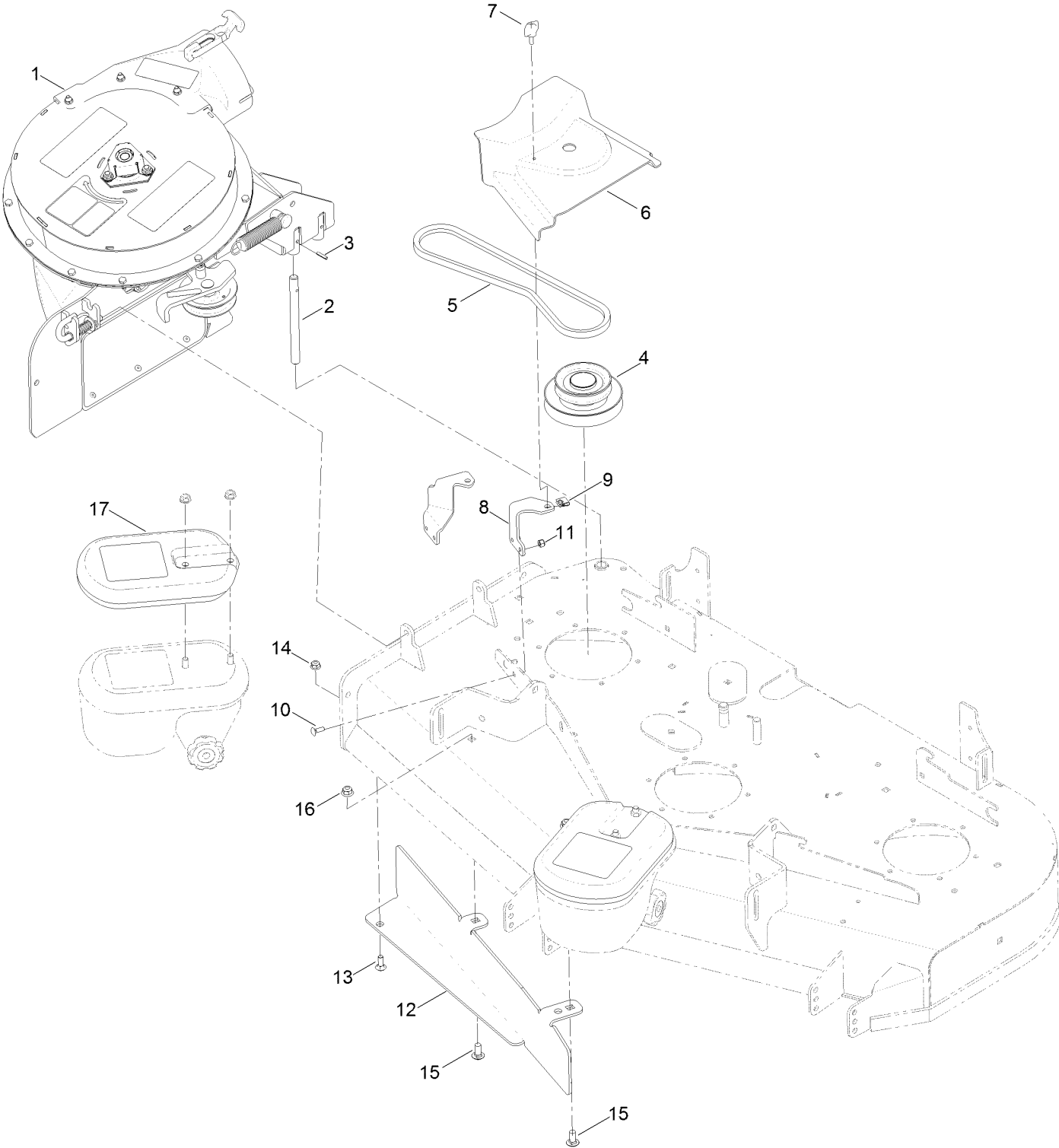
Contents

Blower and Drive Assembly 4

Blower Assembly No. 126-9788 6

Idler Arm Assembly No. 117-8635..... 8

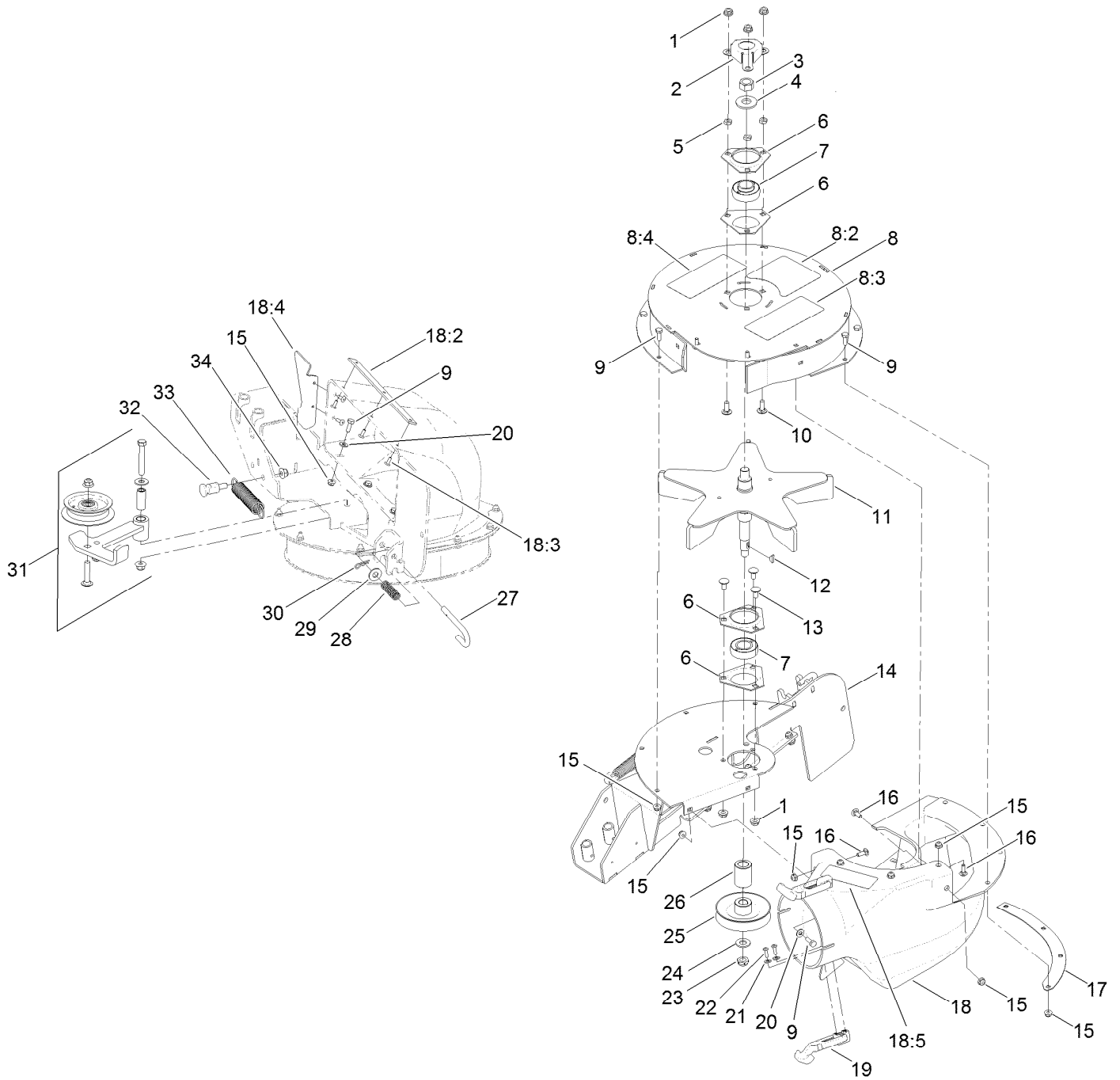
Blower and Drive Assembly



Blower and Drive Assembly (continued)

<i>Ref.</i>	<i>Part Number</i>	<i>Qty.</i>	<i>Description</i>	<i>Ref.</i>	<i>Part Number</i>	<i>Qty.</i>	<i>Description</i>
1	126-9788	1	Blower ASM	10	3229-1	2	Bolt-CARR
2	1-353050	1	Shaft-Catcher, Grass	11	3296-42	2	Nut-Lock, NI
3	1-806323	1	Pin-Roll	12	120-3249-01	1	Baffle-Bagger
4	126-7715	1	Drive-Jackshaft	13	3230-16	1	Screw-CARR
5	121-3224	1	Belt-V	14	104-8300	1	Nut-Flange, NI
6	117-8642	1	Cover-Belt	15	3231-27	2	Screw-CARR
7	98-8332	1	Knob	16	104-8301	2	Nut-Flange, NI
8	115-3637-01	1	Bracket-Cover, Belt	17	126-9684	2	Weight
9	609900	1	Nut-Speed				

Blower Assembly No. 126-9788

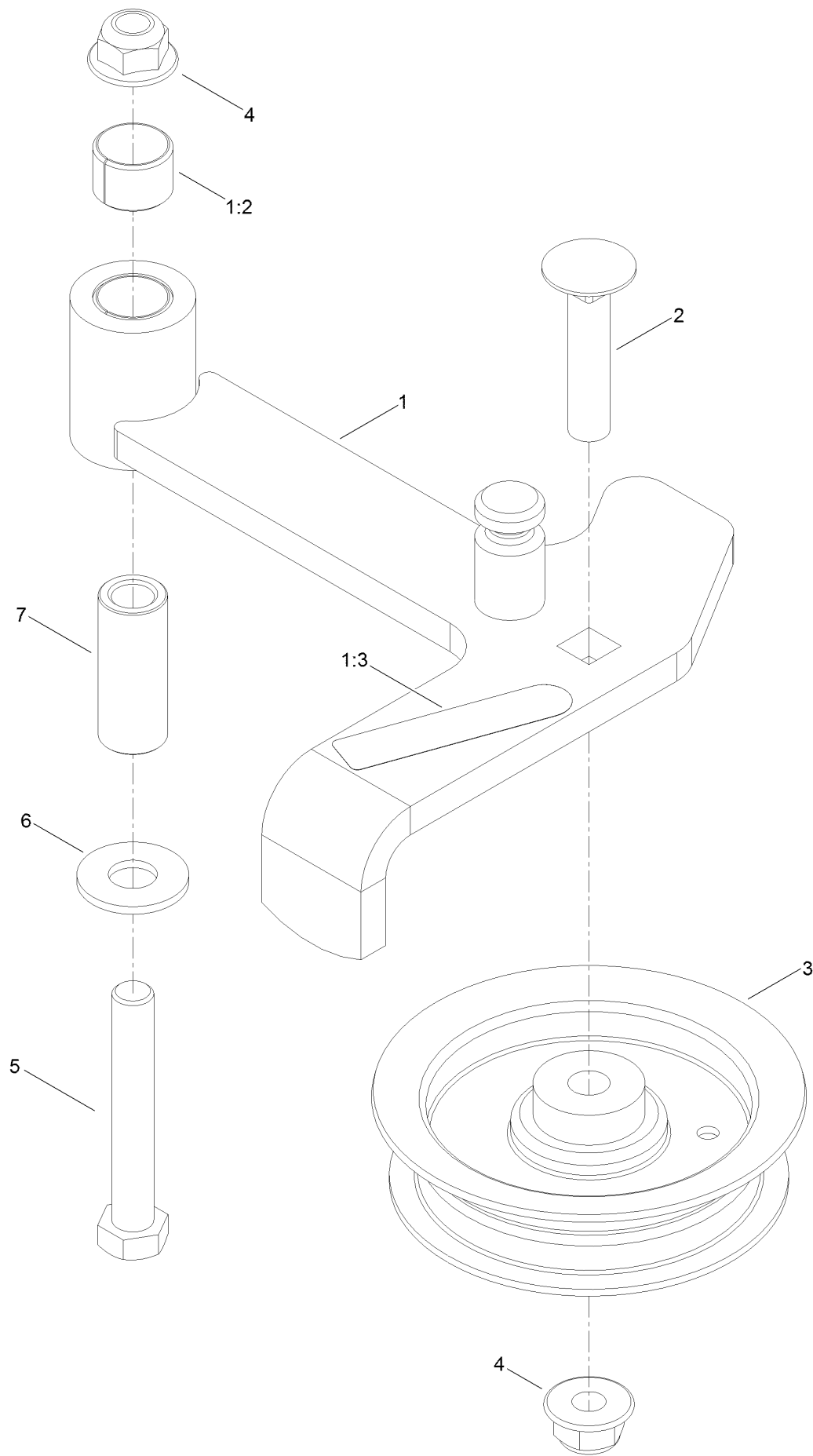


Blower Assembly No. 126-9788 (continued)

<i>Ref.</i>	<i>Part Number</i>	<i>Qty.</i>	<i>Description</i>
1	32128-20	6	Nut-HF
2	116-4776	1	Cover-Nut
3	3219-6	1	Nut-Hex
4	1-513208	1	Washer-Spring
5	3218-2	3	Nut-Jam
6	1-513013	4	Housing-Flange
7	1-653346	2	Bearing
8	126-9786	1	Upper Housing ASM
8:2	126-9451	1	Decal-Warning
8:3	126-9594	1	Decal
8:4	126-9595	1	Decal-Warning
9	321-4	13	Screw-HH
10	3230-10	3	Screw-CARR
11	103-3815	1	Impeller
12	3257-32	1	Key-Woodruff
13	3230-18	3	Screw-CARR
14	120-2542-03	1	Frame-Blower
15	104-7201	18	Nut-Flange, NI
16	3229-1	5	Bolt-CARR
17	116-4434-03	1	Plate-Backing
18	116-6487	1	Blower Chute ASM

<i>Ref.</i>	<i>Part Number</i>	<i>Qty.</i>	<i>Description</i>
18:2	103-4752-03	1	Plate-Reinforcing
18:3	114439	5	Rivet-Pop
18:4	116-6486-03	1	Plate-Filler
18:5	126-4853	1	Decal-Warning
19	103-4080	2	Latch-Rubber
20	3256-22	5	Washer-Flat
21	3256-14	4	Washer-Flat
22	3290-500	4	Screw-PPH
23	3296-28	1	Nut-Lock, NI
24	3256-26	1	Washer-Flat
25	112-2345	1	Pulley
26	1-653365	1	Spacer
27	116-4356	1	Pin-Latch
28	121-3249	1	Spring-Compression
29	3256-4	1	Washer-Flat
30	3290-307	1	Pin-Cotter
31	117-8635	1	Idler Arm ASM
32	121-3225	1	Anchor-Spring
33	1-603693	1	Spring-Extension
34	104-8301	1	Nut-Flange, NI

Idler Arm Assembly No. 117-8635



Idler Arm Assembly No. 117-8635 (continued)

<i>Ref.</i>	<i>Part Number</i>	<i>Qty.</i>	<i>Description</i>	<i>Ref.</i>	<i>Part Number</i>	<i>Qty.</i>	<i>Description</i>
1	117-8638	1	Idler Arm With Bushing ASM	4	104-8301	2	Nut-Flange, NI
1:2	1-653600	2	Bushing	5	323-12	1	Screw-HH
1:3	126-4659	1	Decal-Warning	6	3256-4	1	Washer-Flat
2	3231-5	1	Screw-CARR	7	1-603044	1	Bushing
3	103-1103	1	Idler-Flat				

Notes:

Notes:



Count on it.