



**Count on it.**

# Parts Catalog

## Combo for Direct Drive Trencher and P85 Plow

### RT600 Traction Unit

Model No. 25201

Model No. 25201E



# Ordering Replacement Parts

To order replacement parts, please supply the part number, the quantity, and the description of each part desired.

## Understanding Reference Numbers

Each identified part in an illustration has a reference number. The reference number for a part also appears in the parts list, along with other information about the part.

This catalog uses two special reference number formats, one to indicate parts in a service assembly and another to indicate the quantity of a given part in an illustration.

## Service Assembly Reference Numbers

Parts in service assemblies have reference numbers in the form a:b. The a represents the reference number of the entire service assembly and the b represents a sequential number unique to each part within the service assembly.

For example, a wheel assembly might be identified by reference number 6, the tire by 6:1, the valve by 6:2, and the wheel by 6:3. When you order the assembly identified by reference number 6, you receive all parts identified by reference numbers 6:1, 6:2, and 6:3. However, you may also order any part individually. Reference numbers of this type appear in illustration and in parts lists.

## Reference Numbers Indicating Quantity

In an illustration, if a reference number indicates more than one part, the reference number has the form nX y. The n represents the quantity of the part, the X is the multiplication symbol, and the y represents the reference number.

For example, in an illustration, the reference number 2X 37 means that two of the parts identified by reference number 37 are indicated.

# List of Abbreviations

**AR:** as required

**ASM:** assembly

**BBC:** blade brake control

**BHTF:** button head thread forming

**CARR:** carriage

**CCW:** counter clockwise

**CW:** clockwise

**DEG:** degrees

**DPA:** Dual Point Adjustment

**ECM:** electronic control module

**EXT:** external

**FH:** flat head

**GA:** gauge

**HD:** heavy-duty

**HF:** hex flange

**HH:** hex head

**HHF:** hex head flange

**HHFTF:** hex head flange thread forming

**HJ:** hex jam

**HLH:** hex lag head

**HOC:** height-of-cut

**HP:** high pressure

**HSBH:** hex socket button head

**HSFH:** hex socket flat head

**HSH:** hex socket head

**HWH:** hex washer head

**HWHTF:** hex washer head thread forming

**HYD:** hydraulic

**LH:** left hand

**LP:** low pressure

**LPG:** Liquefied Petroleum Gas

**NI:** nylon insert

**NPTF:** national pipe thread fine

**PFH:** phillips flat head

**PPH:** phillips pan head

**PPHTF:** phillips pan head thread forming

**PRH:** phillips round head

**PTH:** phillips truss head

**PTO:** power-take-off

**RH:** right hand

**ROPS:** roll-over protection system

**RRB:** rear roller brush

**SFH:** slotted fillister head

**SHH:** slotted hex head

**SHWH:** slotted hex washer head

**SPH:** slotted pan head

**SQH:** square head

**SRH:** slotted round head

**STD:** standard

**TAP:** self tapping

**TTH:** torx truss head

# Contents

Mount Assembly ..... 4

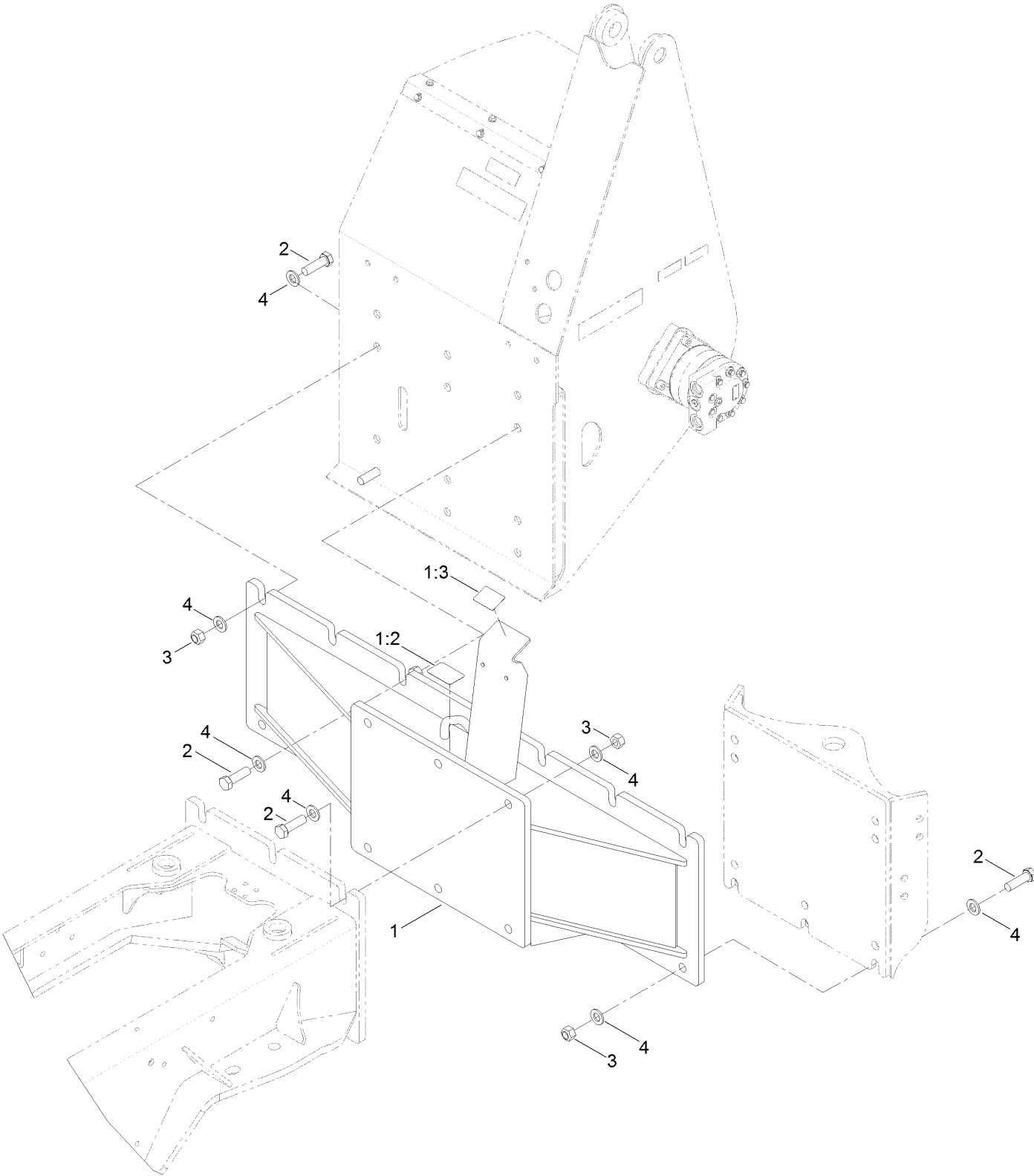
Trencher Lift/Lower Hose Assembly ..... 6

Fitting Assembly ..... 8

Hydraulic Hose and Valve Assembly ..... 10

Wheel and Cylinder Stop Assembly ..... 12

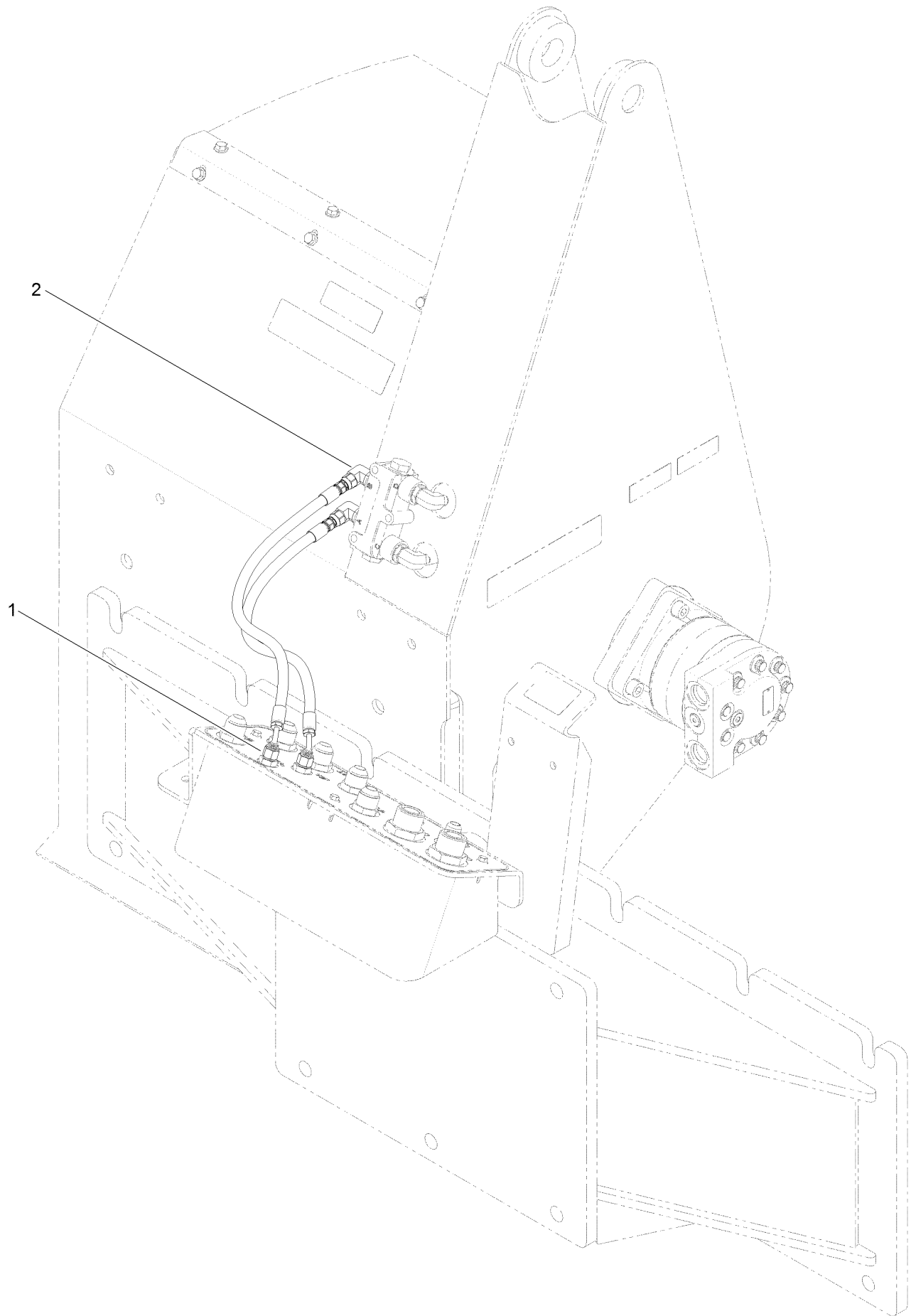
# Mount Assembly



## Mount Assembly (continued)

<i>Ref.</i>	<i>Part Number</i>	<i>Qty.</i>	<i>Description</i>	<i>Ref.</i>	<i>Part Number</i>	<i>Qty.</i>	<i>Description</i>
1	131-2672	1	Rt600 Combo Mount	2	AU426-1240	17	Bolt
1:2	125-6139	1	Decal-Lift/Tie Down	3	120-7252	17	Nut-Lock
1:3	131-2682	1	Decal-Selector	4	AUH426817	33	Washer-Flat

# Trencher Lift/Lower Hose Assembly

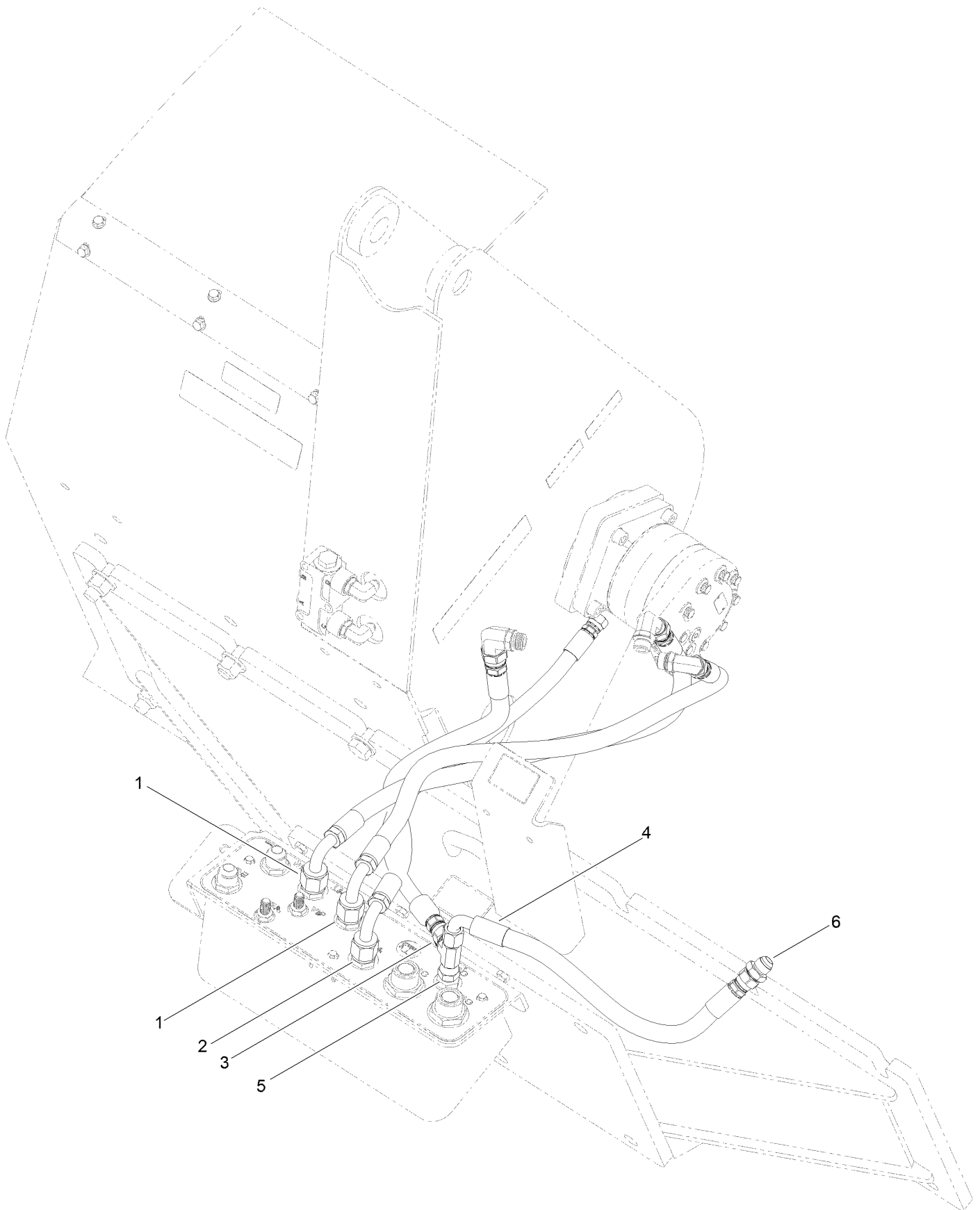


## Trencher Lift/Lower Hose Assembly (continued)

<i>Ref.</i>	<i>Part Number</i>	<i>Qty.</i>	<i>Description</i>
1	131-2581	2	Hose ASM
2	353-537	2	Fitting-Elbow, 90 DEG
2:1	237-79	1	O-Ring ●

● Not illustrated

# Fitting Assembly

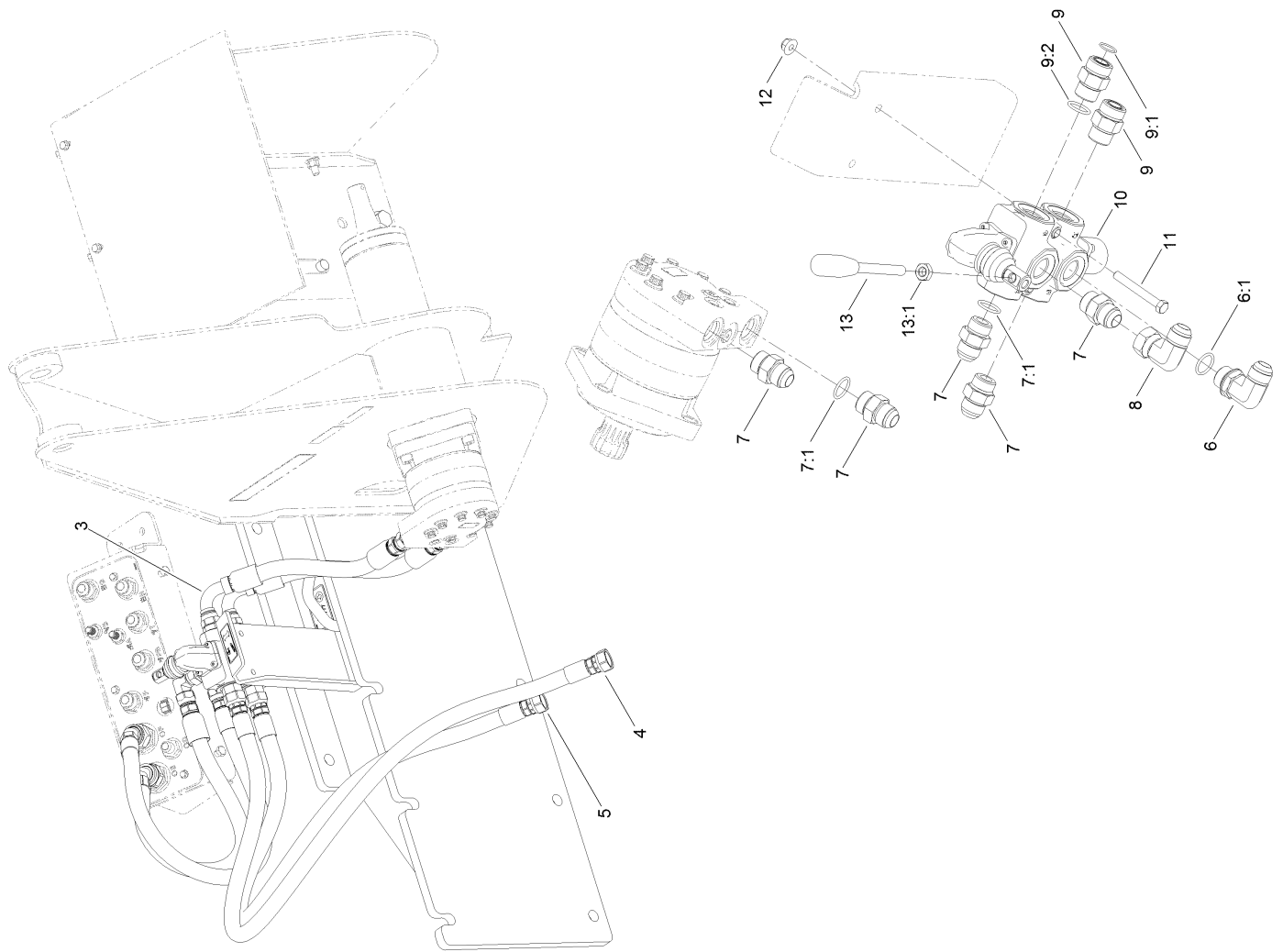




## Fitting Assembly (continued)

<i>Ref.</i>	<i>Part Number</i>	<i>Qty.</i>	<i>Description</i>	<i>Ref.</i>	<i>Part Number</i>	<i>Qty.</i>	<i>Description</i>
1	131-2582	2	Hose ASM	4	130-4312	1	HYD Hose ASM
2	131-2603	1	Hose ASM	5	94-7022	1	Fitting-Tee
3	131-2584	1	Hose ASM	6	AU218-736	1	Fitting-Union

# Hydraulic Hose and Valve Assembly

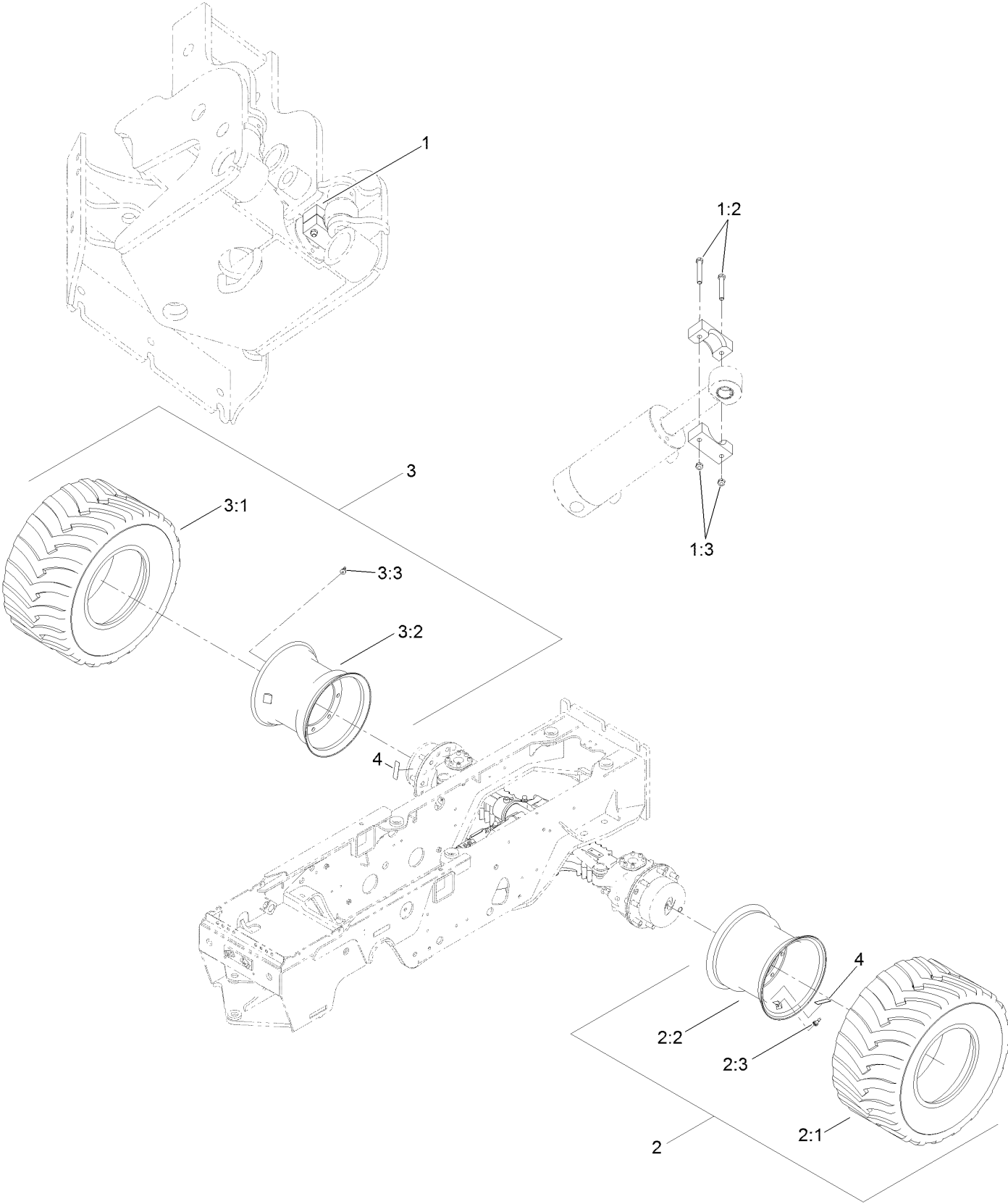


## Hydraulic Hose and Valve Assembly (continued)

<i>Ref.</i>	<i>Part Number</i>	<i>Qty.</i>	<i>Description</i>	<i>Ref.</i>	<i>Part Number</i>	<i>Qty.</i>	<i>Description</i>
3	131-2580	2	Hose ASM	9:1	237-58	1	O-Ring
4	131-2594	1	Hose ASM	9:2	237-81	1	O-Ring
5	131-2583	1	Hose ASM	10	131-2666	1	Valve-Selector
6	353-369	1	Fitting-Elbow, 90 DEG	11	323-14	2	Screw-HH
6:1	237-81	1	O-Ring	12	104-8301	2	Nut-Flange, NI
7	AU218-5064	5	Fitting-Straight	13	131-2671	1	Handle-Selector
7:1	237-81	1	O-Ring	13:1	51-2070	1	Nut
8	AU218-5231	1	Fitting-Elbow, 90	99	3290-379	3	Tie-Cable ●
9	340-9	2	Fitting-HYD, Straight	99	AU112950	1	Protector-Hose, 4 Inch ●

● Not illustrated

# Wheel and Cylinder Stop Assembly



## Wheel and Cylinder Stop Assembly (continued)

<i>Ref.</i>	<i>Part Number</i>	<i>Qty.</i>	<i>Description</i>
1	AUH675015	1	Plow Swing Cylinder Stop ASM
1:2	323-13	2	Screw-HH
1:3	AU232-4116	2	Nut-Hex
2	131-2698	1	Rt600 HD Tire ASM (Left)
2:1	131-2696	1	Tire-31X15.50-15Nhs (10 Ply)
2:2	136-3974	1	Wheel ASM

<i>Ref.</i>	<i>Part Number</i>	<i>Qty.</i>	<i>Description</i>
2:3	232-24	1	Stem-Valve
3	131-2699	1	Rt600 HD Tire ASM (Right)
3:1	131-2696	1	Tire-31X15.50-15Nhs (10 Ply)
3:2	136-3974	1	Wheel ASM
3:3	232-24	1	Stem-Valve
4	133-5056	2	Decal-Rear Wheel Only

**Notes:**

**Notes:**



**Count on it.**