



Storage Box Kit

Workman® GTX Series Utility Vehicles

Model No. 07156

Installation Instructions

⚠ WARNING

CALIFORNIA Proposition 65 Warning

This product contains a chemical or chemicals known to the State of California to cause cancer, birth defects, or reproductive harm.

Installation

Loose Parts

Use the chart below to verify that all parts have been shipped.

Procedure	Description	Qty.	Use
1	No parts required	–	Prepare the machine.
2	Storage box Hex-head screw (1/4 x 3/4 inch) Spacer Flange nut (1/4 inch) Hex-head screw (5/16 x 1 inch)	1 2 2 2 1	Install the storage box.
3	No parts required	–	Connect the battery.

Note: Determine the left and right sides of the machine from the normal operating position.



1

Preparing the Machine

No Parts Required

For Gasoline GTX Vehicles

1. Park the machine on a level surface, set the parking brake, shut off the engine, and remove the key.
2. Disconnect the negative battery cable; refer to your *Operator's Manual*.
3. Open the hood; refer to your *Operator's Manual*.

For Electric GTX Vehicles

1. Park the machine on a level surface, set the parking brake, shut off the machine, and remove the key.
2. Disconnect the main negative battery cable (black) that connects the bank of batteries to the ground point of the machine; refer to your *Operator's Manual*.
3. Open the hood; refer to your *Operator's Manual*.

2

Installing the Storage Box

Parts needed for this procedure:

1	Storage box
2	Hex-head screw (1/4 x 3/4 inch)
2	Spacer
2	Flange nut (1/4 inch)
1	Hex-head screw (5/16 x 1 inch)

Procedure

1. Remove the existing bolt from the right side of the support plate (Figure 1).
2. Align the 2 spacers with the holes on the support plate (Figure 1).
3. Gently lower the storage box onto the spacers and support plate (Figure 1).
4. Install the hex-head screw (5/16 x 1 inch) through the storage box, support plate, and the right, front shock-mount bracket (Figure 1).
5. Install a hex-head screw (1/4 x 3/4 inch) and a flange nut (1/4 inch) through the storage box and support plate (Figure 1).
6. Install a hex-head screw (1/4 x 3/4 inch) and a flange nut (1/4 inch) through the storage box and shock-support bracket (Figure 1).

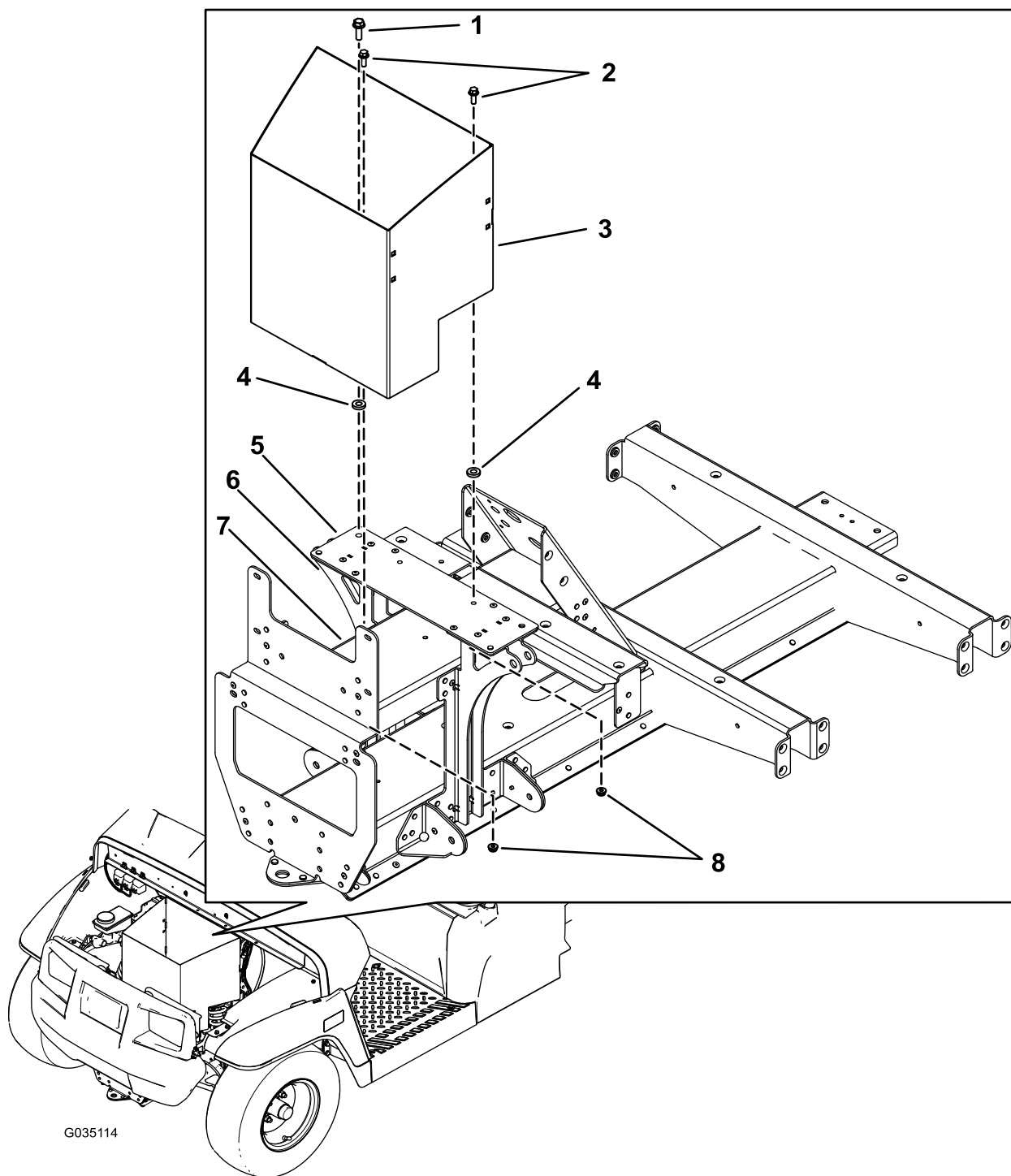


Figure 1

- | | |
|------------------------------------|-------------------------------------|
| 1. Hex-head screw (5/16 x 1 inch) | 5. Support plate |
| 2. Hex-head screw (1/4 x 3/4 inch) | 6. Right, front shock-mount bracket |
| 3. Storage box | 7. Shock-support bracket |
| 4. Spacer | 8. Flange nut (1/4 inch) |

3

Connecting the Battery

No Parts Required

For Gasoline GTX Vehicles

Connect the negative battery cable; refer to your *Operator's Manual*.

For Electric GTX Vehicles

Connect the main negative battery cable (black) that connects the bank of batteries to the ground point of the machine; refer to your *Operator's Manual*.