



Cab Kit

Workman® MD/MDE/MDX/MDXD Utility Vehicle

Model No. 07320—Serial No. 400000000 and Up

Installation Instructions

Important: For 2016 and newer machines, you must install the heavy-duty springs that are supplied with the Cab Kit in order to use the cab on a Workman MD/MDE/MDX/MDXD utility vehicle.

For 2015 and older machines, discard the springs included in this kit and order 2 springs (Toro Part No. 117-4847) from your Authorized Toro Dealer.

The springs should be installed only by qualified Toro Service Technicians using approved tools. Improper removal, disassembly, or installation of the spring assembly poses a danger to you and bystanders. Please contact your Authorized Toro Dealer for the appropriate tools and proper installation of this kit.

Safety

⚠ WARNING

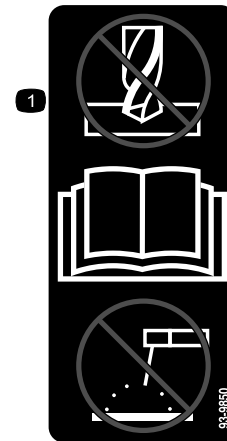
CALIFORNIA Proposition 65 Warning

This product contains a chemical or chemicals known to the State of California to cause cancer, birth defects, or reproductive harm.

Safety and Instructional Decals



Safety decals and instructions are easily visible to the operator and are located near any area of potential danger. Replace any decal that is damaged or missing.



93-9850

decal93-9850

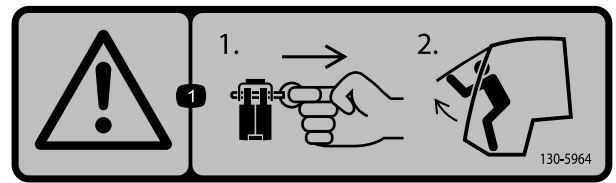
1. Do not repair or revise—read the *Operator's Manual*.





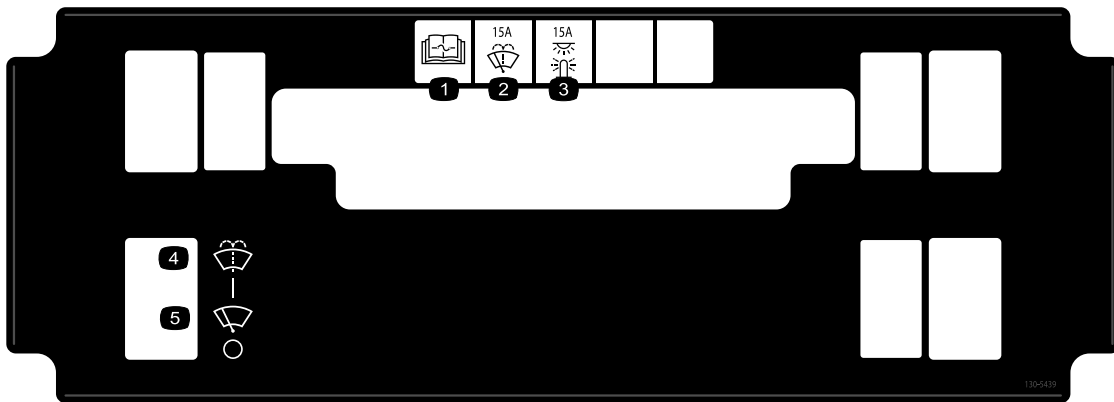
117-4955

1. Warning—read the *Operator's Manual*; wear the seat belt when seated in the operator's position; avoid tipping the machine.
2. Warning—wear hearing protection.



130-5964

1. Warning—in the event of an emergency 1) Pull the locking pin out of each hinge; 2) Push the front window out to exit.



130-5439

1. Read the *Operator's Manual* for information on fuses.
2. Windshield wiper (15 A)
3. Lights (15 A)
4. Windshield spray
5. Windshield wiper

Installation

Loose Parts

Use the chart below to verify that all parts have been shipped.

Procedure	Description	Qty.	Use
1	No parts required	–	Prepare the machine.
2	No parts required	–	Remove the strut assembly (for 2016 and newer machines only).
3	Spring	2	Install the springs (for 2016 and newer machines only).
4	No parts required	–	Install the strut assembly (for 2016 and newer machines only).
5	Compression spring	2	Install the compression spring (for 2015 and older machines only).
6	No parts required	–	Remove the ROPS assembly.
7	Floor mount Nut (3/8 inch) Bolt (3/8 x 1 inch) Bolt (5/16 inch) Nut (5/16 inch) Bolt (3/8 x 7/8 inch) Washer	2 6 4 2 2 2 2	Install the floor mounts.
8	Cab frame Bolts (3/8 x 7/8 inch) Bolt (3/8 x 3/4 inch) Nuts (3/8 inch)	1 4 10 10	Install the cab frame.
9	Side-plate panels Bolts (1/4 inch) Side-plate foam panel	2 4 2	Install the side panels.
10	Seat-belt anchor Bolts (3/8 x 3/4 inch) Nuts (3/8 inch) Seat-belt receiver end Bolt (7/16 inch) Nut (7/16 inch) Seat-belt bracket Seat belt Bolt (3/8 x 7/8 inch)	2 4 4 2 4 4 2 2 2	Install the seat shroud.

Procedure	Description	Qty.	Use
11	Wire harness	1	Route the wire harness.
	Clip tie	1	
	Plug	1	
	Fuse (30 A)	1	
	Ground block (MDE machines only)	1	
	Jumper strip (MDE machines only)	1	
	Bolt (#10 x 3/4 inch, MDE machines only)	2	
	Nut (#10, MDE machines only)	2	
	Ground-adapter harness (MDE machines only)	1	
	Power-adapter harness (MDE machines only)	1	

Media and Additional Parts

Description	Qty.	Use
12 V Power Plug Adapter Kit	1	This kit is needed for the Workman MDE Utility Vehicle only.

1

Preparing the Machine

No Parts Required

Procedure

1. Park the machine on a level surface.
2. Engage the parking brake.
3. Raise the bed until the bed prop rod is fully engaged; refer to your *Operator's Manual*.
4. Shut off the engine and remove the key.
5. Disconnect the battery; refer to the *Operator's Manual* for the machine.

2

Removing the Strut Assembly (for 2016 and Newer Machines Only)

No Parts Required

Procedure

1. Remove the front wheel.
2. Remove the hex-head bolt ($3/8 \times 4-3/4$ inches) and flange nut ($3/8$ inch) from the spindle (Figure 1).
3. Remove the hex-head bolt ($3/8 \times 3-1/2$ inches) and flange nut ($3/8$ inch) from the control arm (Figure 1).
4. Remove the hex-head bolt ($1/2 \times 2-1/4$ inches) and locknut ($1/2$ inch) securing the strut assembly to the upper frame (Figure 1).
5. Remove the strut assembly (Figure 1).

Note: Repeat this procedure for the other side of the machine.

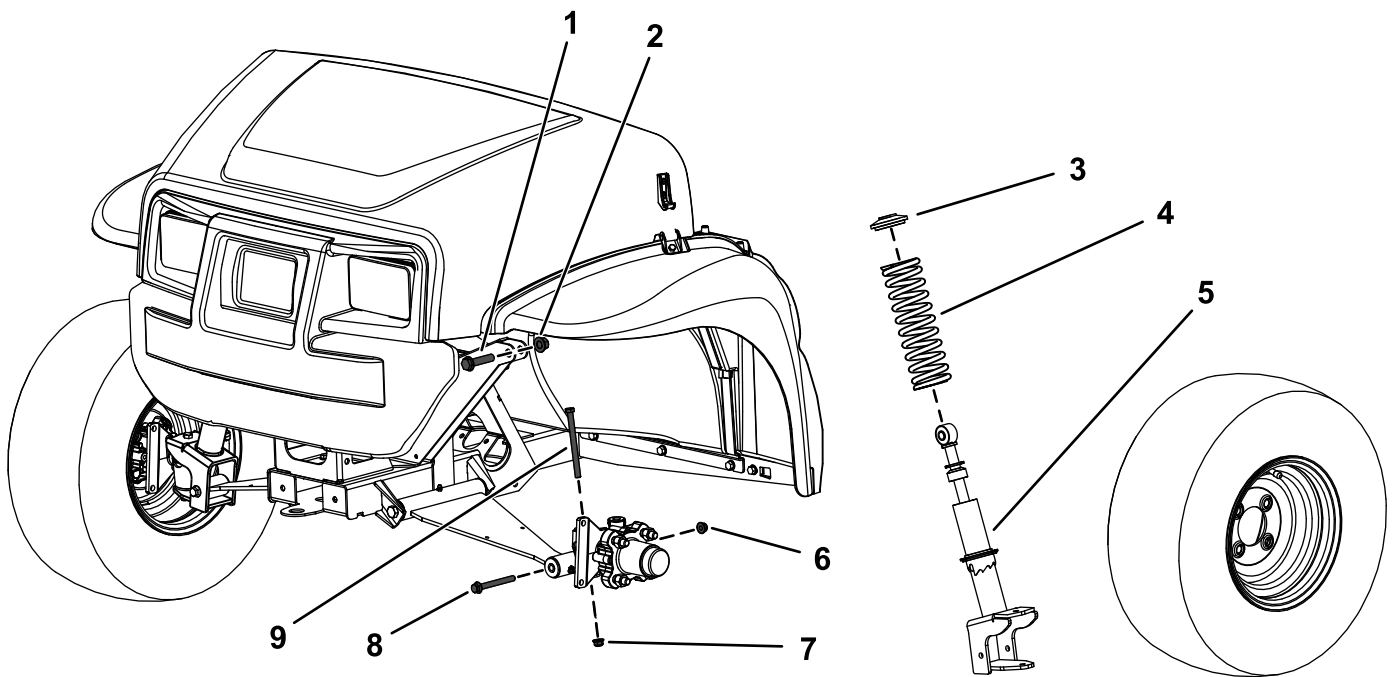


Figure 1

- | | |
|---|--|
| 1. Hex-head bolt ($1/2 \times 2-1/4$ inches) | 6. Flange nut ($3/8$ inch)—from the control arm |
| 2. Locknut ($1/2$ inch) | 7. Flange nut ($3/8$ inch)—from the spindle |
| 3. Collar | 8. Hex-head bolt ($3/8 \times 3-1/2$ inches)—from the control arm |
| 4. Spring | 9. Hex-head bolt ($3/8 \times 4-3/4$ inches)—from the spindle |
| 5. Strut assembly | |

3

Installing the Springs (for 2016 and Newer Machines Only)

Parts needed for this procedure:

2	Spring
---	--------

Procedure

Use an approved Toro spring-compression tool to remove and install springs of the strut assembly. Contact your Authorized Toro Dealer.

1. Place the strut assembly into the compression tool and use the tool to compress the spring.
2. While the spring is compressed, remove the collar.
3. Remove the spring from the strut assembly (Figure 1).
4. Install the new spring over the existing strut assembly (Figure 1).
5. Using the Toro spring-compression tool, compress the spring.
6. While the spring is compressed, install the collar.
7. Carefully release pressure on the spring, allowing it to seat on the collar.
8. Remove the strut assembly from the compression tool.

Note: Repeat this procedure for the other side of the machine.

4

Installing the Strut Assembly (for 2016 and Newer Machines Only)

No Parts Required

Procedure

1. Install strut assembly to the machine.
2. Secure the upper portion of the strut assembly to the frame using the upper, hex-head bolt (1/2 x 2-1/4 inches) and locknut (1/2 inch) as shown in Figure 1.

3. Torque the hex-head bolt (1/2 x 2-1/4 inches) to 91 to 113 N·m (67 to 83 ft-lb).
4. Install the hex-head bolt (3/8 x 4-3/4 inches) and flange nut (3/8 inch) to the spindle (Figure 1).
5. Torque the hex-head bolt (3/8 x 4-3/4 inches) to 37 to 45 N·m (27 to 33 ft-lb).
6. Secure the lower portion of the strut assembly to the control arm using the hex-head bolt (3/8 x 3-1/2 inches) and flange nut (3/8 inch) as shown in Figure 1.
7. Torque the hex-head bolt (3/8 x 3-1/2 inches) to 37 to 45 N·m (27 to 33 ft-lb).
8. Install the front wheel.

Note: Repeat this procedure for the other side of the machine.

5

Installing the Compression Spring (for 2015 and Older Machines Only)

Parts needed for this procedure:

2	Compression spring
---	--------------------

Procedure

Use an approved Toro spring-compression tool to remove and install springs of the strut assembly. Contact your Authorized Toro Dealer.

Important: For 2015 and older machines, discard the springs included in this kit and order 2 springs (Toro Part No. 117-4847) from your Authorized Toro Dealer.

1. Raise the front of the machine off the ground and support it with jack stands.
2. Remove the current shock assemblies as shown in Figure 2.

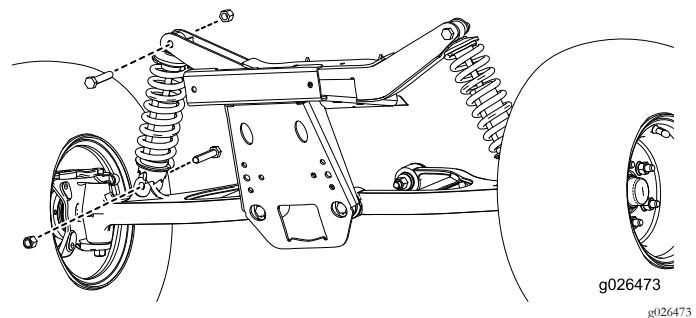


Figure 2

3. Using a spring compressor, remove the current springs and install the springs from this kit.
4. Install the shock assemblies and turn them 3 clicks up from the longest position.

Note: Refer to the *Service Manual* for further instructions on replacing the spring and checking the front end toe of the tires.

5. Torque the bolts to 95 to 122 N·m (70 to 90 ft-lb).

6

Removing the ROPS Assembly

No Parts Required

Procedure

If your machine does not have a ROPS assembly, proceed to [7 Installing the Floor Mounts \(page 7\)](#).

Remove the bolts and nuts that secure the ROPS assembly to the frame of the machine as shown in [Figure 3](#) and remove the ROPS assembly.

Note: Do not remove the seat-belt anchors that are secured on the frame.

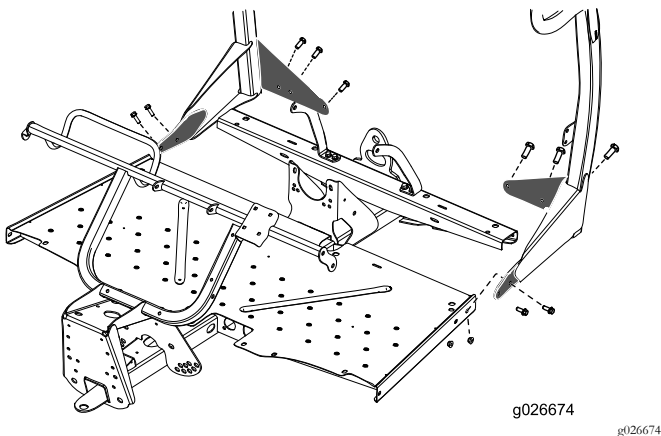


Figure 3

7

Installing the Floor Mounts

Parts needed for this procedure:

2	Floor mount
6	Nut (3/8 inch)
4	Bolt (3/8 x 1 inch)
2	Bolt (5/16 inch)
2	Nut (5/16 inch)
2	Bolt (3/8 x 7/8 inch)
2	Washer

Procedure

1. Secure the floor panels to the frame as shown in [Figure 4](#).

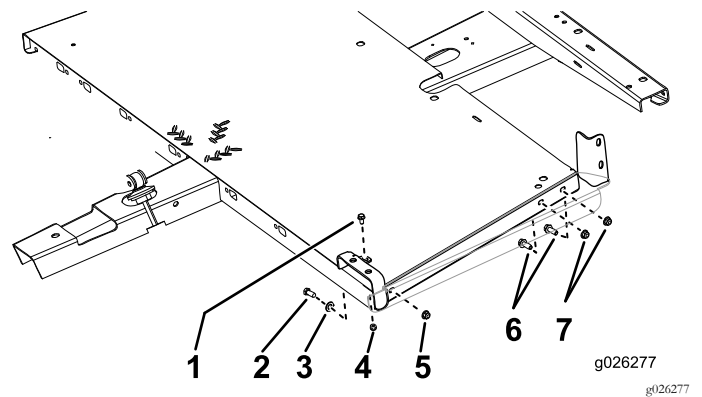


Figure 4

- | | |
|--------------------------|------------------------|
| 1. Bolt (5/16 inch) | 5. Nut (3/8 inch) |
| 2. Bolt (3/8 x 7/8 inch) | 6. Bolt (3/8 x 1 inch) |
| 3. Washer | 7. Nut (3/8 inch) |
| 4. Nut (5/16 inch) | |

2. Torque the 2 bolts (3/8 x 7/8 inch) and 4 bolts (3/8 x 1 inch) to 37 to 45 N·m (27 to 33 ft-lb).
3. Torque the 2 bolts (5/16 inch) to 1978 to 2543 N·cm (175 to 225 in-lb).

8

Installing the Cab Frame

Parts needed for this procedure:

1	Cab frame
4	Bolts (3/8 x 7/8 inch)
10	Bolt (3/8 x 3/4 inch)
10	Nuts (3/8 inch)

Procedure

1. Lift the cab frame using the lifting points and place it on the machine (Figure 5).

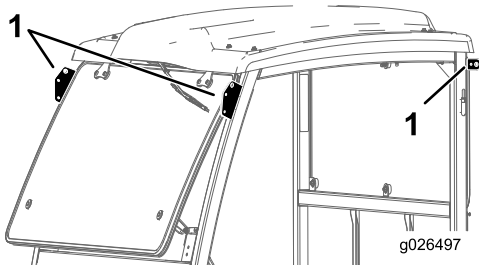


Figure 5

1. Lifting points

2. Secure the frame to the machine using 10 bolts (3/8 x 3/4 inch), 10 nuts (3/8 inch), and 4 bolts (3/8 x 7/8 inch) as shown in Figure 6.

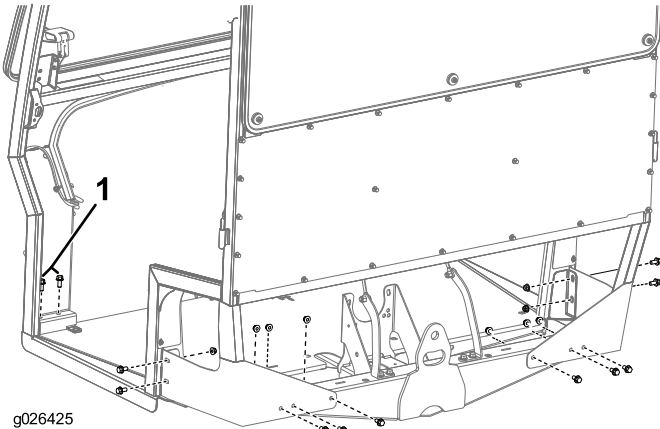


Figure 6

1. Bolt (3/8 x 7/8 inch)

3. Torque the bolts to 37 to 45 N·m (27 to 33 ft-lb).

9

Installing the Side Panels

Parts needed for this procedure:

2	Side-plate panels
4	Bolts (1/4 inch)
2	Side-plate foam panel

Procedure

1. Fasten the mounting plates onto the cab using 4 bolts (1/4 inch) as shown in Figure 7.
2. Torque the bolts to 1017 to 1243 N·cm (90 to 110 in-lb).
3. Remove the paper backing from the double stick tape on the mounting plates (Figure 7).

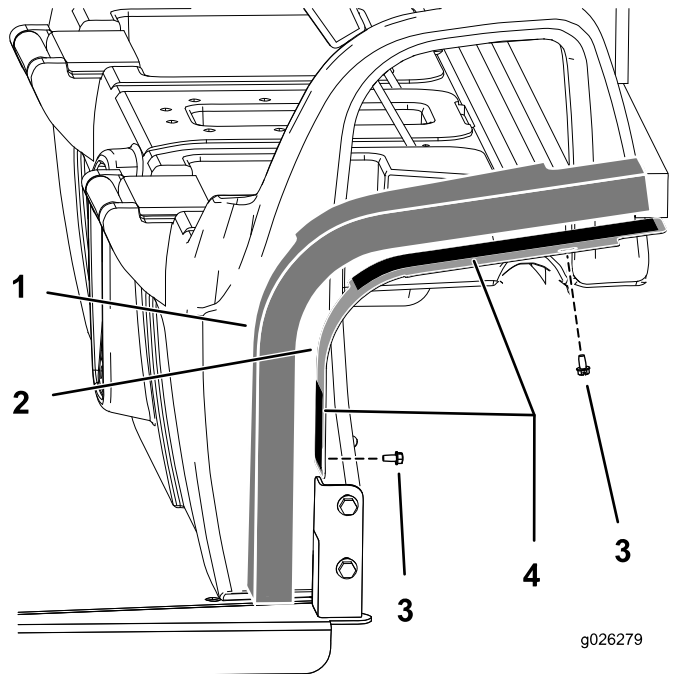


Figure 7

1. Foam panel
2. Mounting plates
3. Bolts (1/4 inch)
4. Double-stick tape

4. Install the foam panels onto the assembly (Figure 7).

10

Installing the Seat Belts

Parts needed for this procedure:

2	Seat-belt anchor
4	Bolts (3/8 x 3/4 inch)
4	Nuts (3/8 inch)
2	Seat-belt receiver end
4	Bolt (7/16 inch)
4	Nut (7/16 inch)
2	Seat-belt bracket
2	Seat belt
2	Bolt (3/8 x 7/8 inch)

Procedure

1. Mount a seat belt bracket to each ROPS tab with 2 bolts (3/8 inch) as shown in [Figure 8](#).

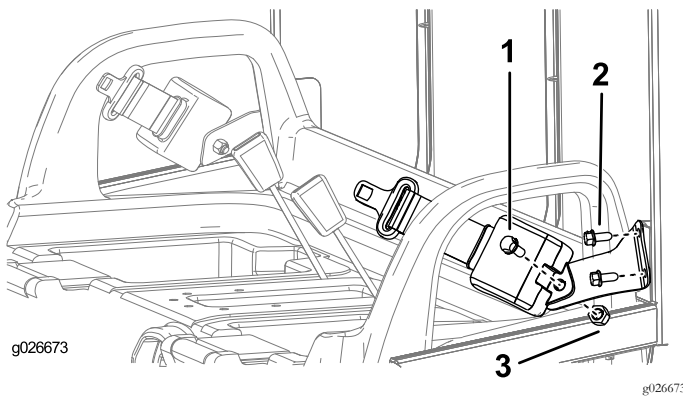


Figure 8

1. Bolt (7/16 inch)
2. Bolt (3/8 x 7/8 inch)
3. Nut (7/16 inch)

2. Torque the 4 bolts (3/8 inch) to 37 to 45 N·m (27 to 33 ft-lb).
3. Mount the retractable end of each seat-belt assembly to each seat-belt anchor bracket with a bolt (7/16 inch) and a nut (7/16 inch) as shown in [Figure 8](#).

Note: If your machine came equipped with a ROPS assembly, the seat-belt anchors are already installed; proceed to [11 Routing the Wire Harness](#) (page 10).

4. Torque the 2 bolts (7/16 inch) to 67 to 83 N·m (49 to 61 ft-lb).
5. Secure the left and right seat-belt anchor to the front frame with 4 bolts (3/8 x 3/4 inch) and 4 nuts (3/8 inch) as shown in [Figure 9](#).

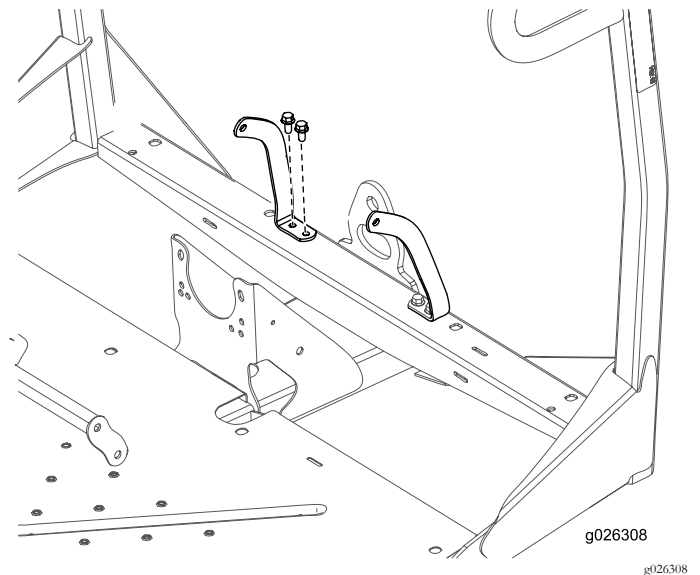


Figure 9

6. Torque the 4 bolts (3/8 x 3/4 inch) to 37 to 45 N·m (27 to 33 ft-lb).
7. Using the dimensions shown in [Figure 10](#), locate, mark, and drill 2 holes in the top of the seat shroud.

Important: Use caution when drilling these holes; electrical components and control cables are located under the seat shroud.

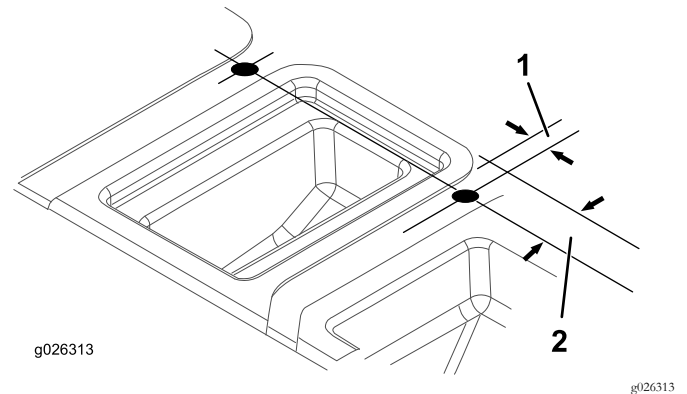


Figure 10

1. 21 mm (2.1 cm)
2. 51 mm (2 inches)

8. Insert the mounting side of the receiver end of each seat-belt lock assembly into one of the newly drilled holes in the seat base ([Figure 11](#)).

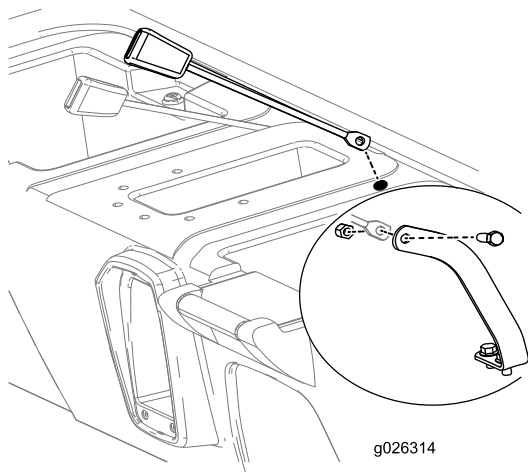


Figure 11

9. Mount the receiver end of each seat-belt assembly to each seat-belt anchor with a bolt (7/16 inch) and nut (7/16 inch) as shown in [Figure 11](#).
10. Torque the bolts to 67 to 83 N·m (49 to 61 ft-lb).

11

Routing the Wire Harness

Parts needed for this procedure:

1	Wire harness
1	Clip tie
1	Plug
1	Fuse (30 A)
1	Ground block (MDE machines only)
1	Jumper strip (MDE machines only)
2	Bolt (#10 x 3/4 inch, MDE machines only)
2	Nut (#10, MDE machines only)
1	Ground-adaptor harness (MDE machines only)
1	Power-adaptor harness (MDE machines only)

Procedure

Note: For Workman MDE machines, the 12 V Plug Adapter Kit (sold separately) must be installed on the machine; refer to the *Installation Instructions* for the kit.

1. Route the wire harness via 1 of the 2 following options:

- Route the wire harness under the control panel (Box A of [Figure 12](#)). Install the clip tie in the lower hole on the side panel and the plug in the top hole.
- Drill a hole into the console, install the clip tie in the top hole on the side panel, and install the plug into the lower hole (Box B of [Figure 12](#)).

Important: Use caution when drilling this hole; electrical components and control cables are located under the seat shroud.

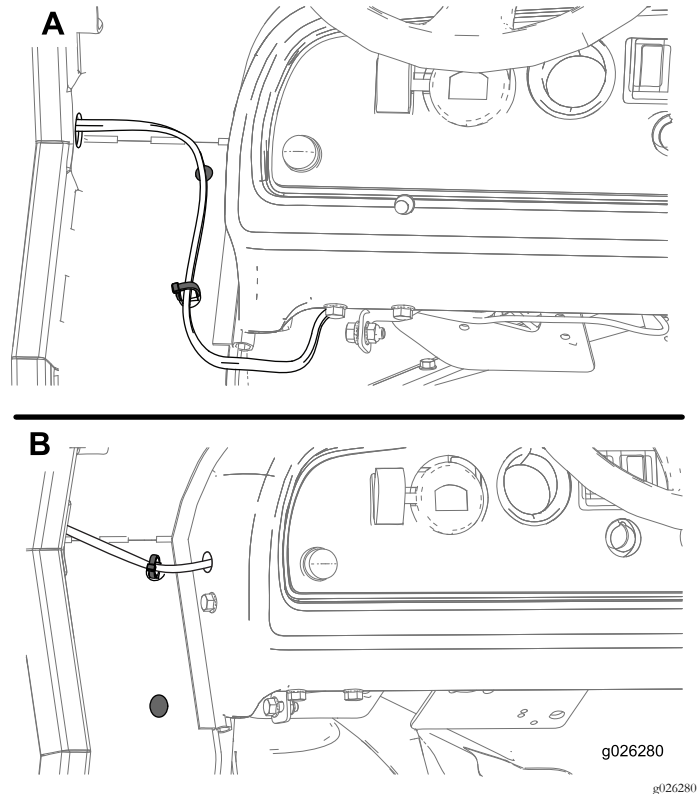


Figure 12

2. **For Workman MD/MDX/MDXD machines:** Connect the ring terminal on the harness to the grounding block and insert the fuse-block connector into an available fuse-block connection ([Figure 13](#)).

Note: If there is not an available fuse-block connection, you need to add a fuse block to the fuse-block grouping. Contact your Authorized Service Dealer for more information.

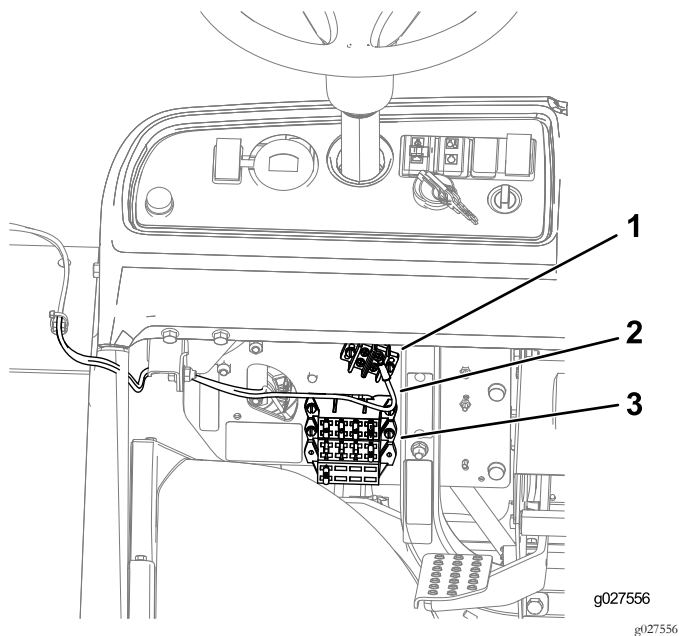


Figure 13

1. Ground block
2. Wire harness
3. Fuse block

3. For Workman MDE machines, complete as follows:

Note: The 12 V Plug Adapter Kit (sold separately) must be installed on the machine.

- A. Install the jumper strip to the ground block (Figure 14).

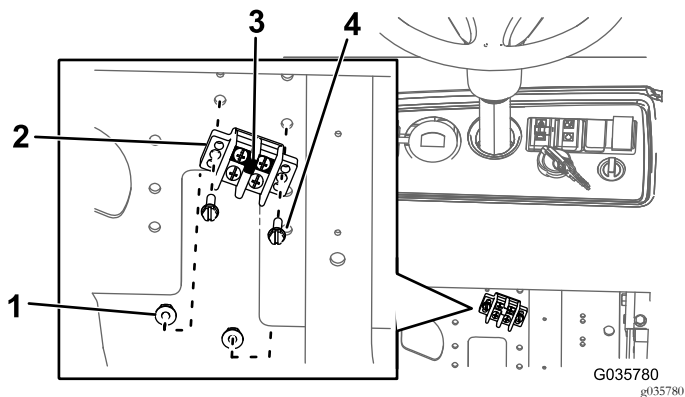


Figure 14

1. Nut
2. Ground block
3. Jumper strip
4. Bolt

- B. Install the ground block to the mount plate using 2 bolts (#10 x 3/4 inch) and 2 nuts (#10) as shown in Figure 14.
- C. Install the wire harness ring terminal and the ground-adaptor harness to the ground block (Figure 15).

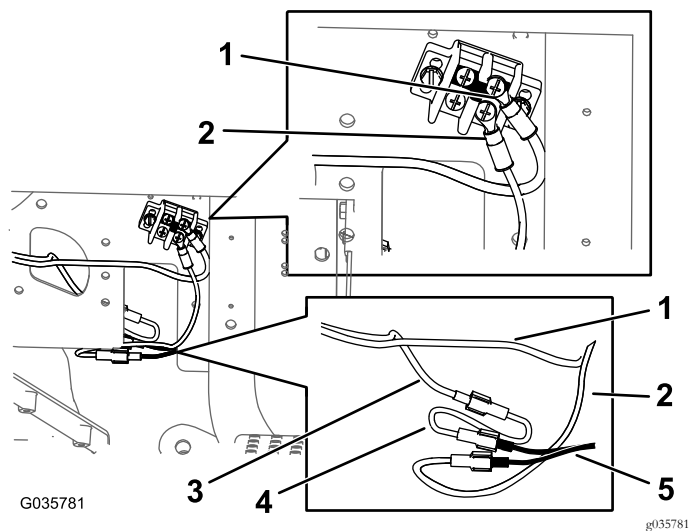


Figure 15

1. Wire harness ring terminal
2. Ground-adaptor harness
3. Wire harness
4. Power-adaptor harness
5. Wire harness from the 12 V Plug Adapter Kit

- D. Connect the power-adaptor harness to the wire harness (Figure 15).
- E. Connect the power-adaptor harness and the ground-adaptor harness to the wire harness from the 12 V Plug Adapter Kit.
4. Connect the battery and lower the bed; refer to the *Operator's Manual*.

Product Overview

Controls

Control Panel

Windshield-Wiper Switch

Push the top of the switch to activate the windshield wipers (Figure 16).

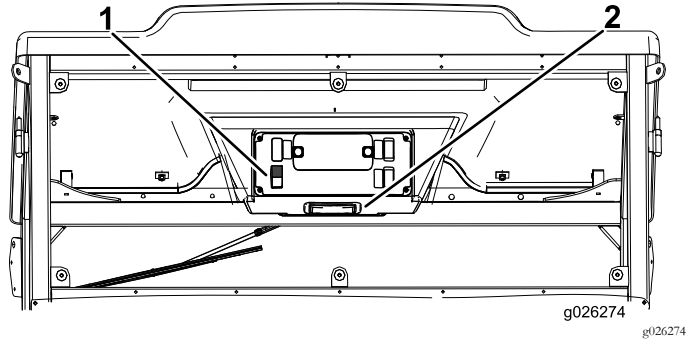


Figure 16

1. Windshield-wiper switch 2. Light switch

Light Switch

Push the light plate to turn on the light (Figure 16).

Windshield Latch

Lift up the latches to open the windshield (Figure 17). Press in the latch to lock the windshield in the open position. Pull out and down on the latch to close and secure the windshield.

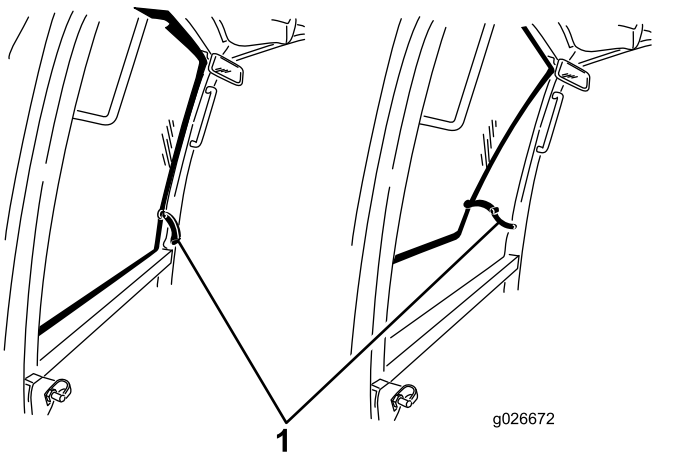


Figure 17

1. Windshield latch

Notes:

Declaration of Incorporation

Model No.	Serial No.	Product Description	Invoice Description	General Description	Directive
07320	400000000 and Up	Cab Kit, Workman MD/MDE/MDX/MDXD Utility Vehicle	CAB-MID DUTY WORKMAN	Utility Vehicle	2006/42/EC, 2004/108/EC

Relevant technical documentation has been compiled as required per Part B of Annex VII of 2006/42/EC.

We will undertake to transmit, in response to requests by national authorities, relevant information on this partly completed machinery. The method of transmission shall be electronic transmittal.

This machinery shall not be put into service until incorporated into approved Toro models as indicated on the associated Declaration of Conformity and in accordance with all instructions, whereby it can be declared in conformity with all relevant Directives.

Certified:



John Heckel
Sr. Engineering Manager
8111 Lyndale Ave. South
Bloomington, MN 55420, USA
February 14, 2017

EU Technical Contact:

Marcel Dutrieux
Manager European Product Integrity
Toro Europe NV
Nijverheidsstraat 5
2260 Oevel

Belgium

Tel. +32 16 386 659

European Privacy Notice

The Information Toro Collects

Toro Warranty Company (Toro) respects your privacy. In order to process your warranty claim and contact you in the event of a product recall, we ask you to share certain personal information with us, either directly or through your local Toro company or dealer.

The Toro warranty system is hosted on servers located within the United States where privacy law may not provide the same protection as applies in your country.

BY SHARING YOUR PERSONAL INFORMATION WITH US, YOU ARE CONSENTING TO THE PROCESSING OF YOUR PERSONAL INFORMATION AS DESCRIBED IN THIS PRIVACY NOTICE.

The Way Toro Uses Information

Toro may use your personal information to process warranty claims, to contact you in the event of a product recall and for any other purpose which we tell you about. Toro may share your information with Toro's affiliates, dealers or other business partners in connection with any of these activities. We will not sell your personal information to any other company. We reserve the right to disclose personal information in order to comply with applicable laws and with requests by the appropriate authorities, to operate our systems properly or for our own protection or that of other users.

Retention of your Personal Information

We will keep your personal information as long as we need it for the purposes for which it was originally collected or for other legitimate purposes (such as regulatory compliance), or as required by applicable law.

Toro's Commitment to Security of Your Personal Information

We take reasonable precautions in order to protect the security of your personal information. We also take steps to maintain the accuracy and current status of personal information.

Access and Correction of your Personal Information

If you would like to review or correct your personal information, please contact us by email at legal@toro.com.

Australian Consumer Law

Australian customers will find details relating to the Australian Consumer Law either inside the box or at your local Toro Dealer.



The Toro Warranty

A Two-Year Limited Warranty

Conditions and Products Covered

The Toro Company and its affiliate, Toro Warranty Company, pursuant to an agreement between them, jointly warrant your Toro Commercial product ("Product") to be free from defects in materials or workmanship for two years or 1500 operational hours*, whichever occurs first. This warranty is applicable to all products with the exception of Aerators (refer to separate warranty statements for these products). Where a warrantable condition exists, we will repair the Product at no cost to you including diagnostics, labor, parts, and transportation. This warranty begins on the date the Product is delivered to the original retail purchaser.

* Product equipped with an hour meter.

Instructions for Obtaining Warranty Service

You are responsible for notifying the Commercial Products Distributor or Authorized Commercial Products Dealer from whom you purchased the Product as soon as you believe a warrantable condition exists. If you need help locating a Commercial Products Distributor or Authorized Dealer, or if you have questions regarding your warranty rights or responsibilities, you may contact us at:

Toro Commercial Products Service Department
Toro Warranty Company
8111 Lyndale Avenue South
Bloomington, MN 55420-1196

952-888-8801 or 800-952-2740
E-mail: commercial.warranty@toro.com

Owner Responsibilities

As the Product owner, you are responsible for required maintenance and adjustments stated in your *Operator's Manual*. Failure to perform required maintenance and adjustments can be grounds for disallowing a warranty claim.

Items and Conditions Not Covered

Not all product failures or malfunctions that occur during the warranty period are defects in materials or workmanship. This warranty does not cover the following:

- Product failures which result from the use of non-Toro replacement parts, or from installation and use of add-on, or modified non-Toro branded accessories and products. A separate warranty may be provided by the manufacturer of these items.
- Product failures which result from failure to perform recommended maintenance and/or adjustments. Failure to properly maintain your Toro product per the Recommended Maintenance listed in the *Operator's Manual* can result in claims for warranty being denied.
- Product failures which result from operating the Product in an abusive, negligent, or reckless manner.
- Parts subject to consumption through use unless found to be defective. Examples of parts which are consumed, or used up, during normal Product operation include, but are not limited to, brake pads and linings, clutch linings, blades, reels, rollers and bearings (sealed or greasable), bed knives, spark plugs, castor wheels and bearings, tires, filters, belts, and certain sprayer components such as diaphragms, nozzles, and check valves, etc.
- Failures caused by outside influence. Conditions considered to be outside influence include, but are not limited to, weather, storage practices, contamination, use of unapproved fuels, coolants, lubricants, additives, fertilizers, water, or chemicals, etc.
- Failure or performance issues due to the use of fuels (e.g. gasoline, diesel, or biodiesel) that do not conform to their respective industry standards.

- Normal noise, vibration, wear and tear, and deterioration.
- Normal "wear and tear" includes, but is not limited to, damage to seats due to wear or abrasion, worn painted surfaces, scratched decals or windows, etc.

Parts

Parts scheduled for replacement as required maintenance are warranted for the period of time up to the scheduled replacement time for that part. Parts replaced under this warranty are covered for the duration of the original product warranty and become the property of Toro. Toro will make the final decision whether to repair any existing part or assembly or replace it. Toro may use remanufactured parts for warranty repairs.

Deep Cycle and Lithium-Ion Battery Warranty:

Deep cycle and Lithium-Ion batteries have a specified total number of kilowatt-hours they can deliver during their lifetime. Operating, recharging, and maintenance techniques can extend or reduce total battery life. As the batteries in this product are consumed, the amount of useful work between charging intervals will slowly decrease until the battery is completely worn out. Replacement of worn out batteries, due to normal consumption, is the responsibility of the product owner. Battery replacement may be required during the normal product warranty period at owner's expense. Note: (Lithium-Ion battery only): A Lithium-Ion battery has a part only prorated warranty beginning year 3 through year 5 based on the time in service and kilowatt hours used. Refer to the *Operator's Manual* for additional information.

Maintenance is at Owner's Expense

Engine tune-up, lubrication, cleaning and polishing, replacement of filters, coolant, and completing recommended maintenance are some of the normal services Toro products require that are at the owner's expense.

General Conditions

Repair by an Authorized Toro Distributor or Dealer is your sole remedy under this warranty.

Neither The Toro Company nor Toro Warranty Company is liable for indirect, incidental or consequential damages in connection with the use of the Toro Products covered by this warranty, including any cost or expense of providing substitute equipment or service during reasonable periods of malfunction or non-use pending completion of repairs under this warranty. Except for the Emissions warranty referenced below, if applicable, there is no other express warranty. All implied warranties of merchantability and fitness for use are limited to the duration of this express warranty.

Some states do not allow exclusions of incidental or consequential damages, or limitations on how long an implied warranty lasts, so the above exclusions and limitations may not apply to you. This warranty gives you specific legal rights, and you may also have other rights which vary from state to state.

Note regarding engine warranty:

The Emissions Control System on your Product may be covered by a separate warranty meeting requirements established by the U.S. Environmental Protection Agency (EPA) and/or the California Air Resources Board (CARB). The hour limitations set forth above do not apply to the Emissions Control System Warranty. Refer to the Engine Emission Control Warranty Statement supplied with your product or contained in the engine manufacturer's documentation for details.

Countries Other than the United States or Canada

Customers who have purchased Toro products exported from the United States or Canada should contact their Toro Distributor (Dealer) to obtain guarantee policies for your country, province, or state. If for any reason you are dissatisfied with your Distributor's service or have difficulty obtaining guarantee information, contact the Toro importer.