



## **21in Mulching/Rear Bagging Lawn Mower**

**Model No. 17734—Serial No. 400000000 and Up**

# **Parts Catalog**



# Ordering Replacement Parts

To order replacement parts, please supply the part number, the quantity, and the description of each part desired.

## Understanding Reference Numbers

Each identified part in an illustration has a reference number. The reference number for a part also appears in the parts list, along with other information about the part.

This catalog uses two special reference number formats, one to indicate parts in a service assembly and another to indicate the quantity of a given part in an illustration.

## Service Assembly Reference Numbers

Parts in service assemblies have reference numbers in the form a:b. The a represents the reference number of the entire service assembly and the b represents a sequential number unique to each part within the service assembly.

For example, a wheel assembly might be identified by reference number 6, the tire by 6:1, the valve by 6:2, and the wheel by 6:3. When you order the assembly identified by reference number 6, you receive all parts identified by reference numbers 6:1, 6:2, and 6:3. However, you may also order any part individually. Reference numbers of this type appear in illustration and in parts lists.

## Reference Numbers Indicating Quantity

In an illustration, if a reference number indicates more than one part, the reference number has the form nX y. The n represents the quantity of the part, the X is the multiplication symbol, and the y represents the reference number.

For example, in an illustration, the reference number 2X 37 means that two of the parts identified by reference number 37 are indicated.

# Contents

Chute and Rear Door Assembly ..... 4

Rear Bag Assembly ..... 6

Engine and Blade Assembly ..... 8

Front Wheel Assembly ..... 10

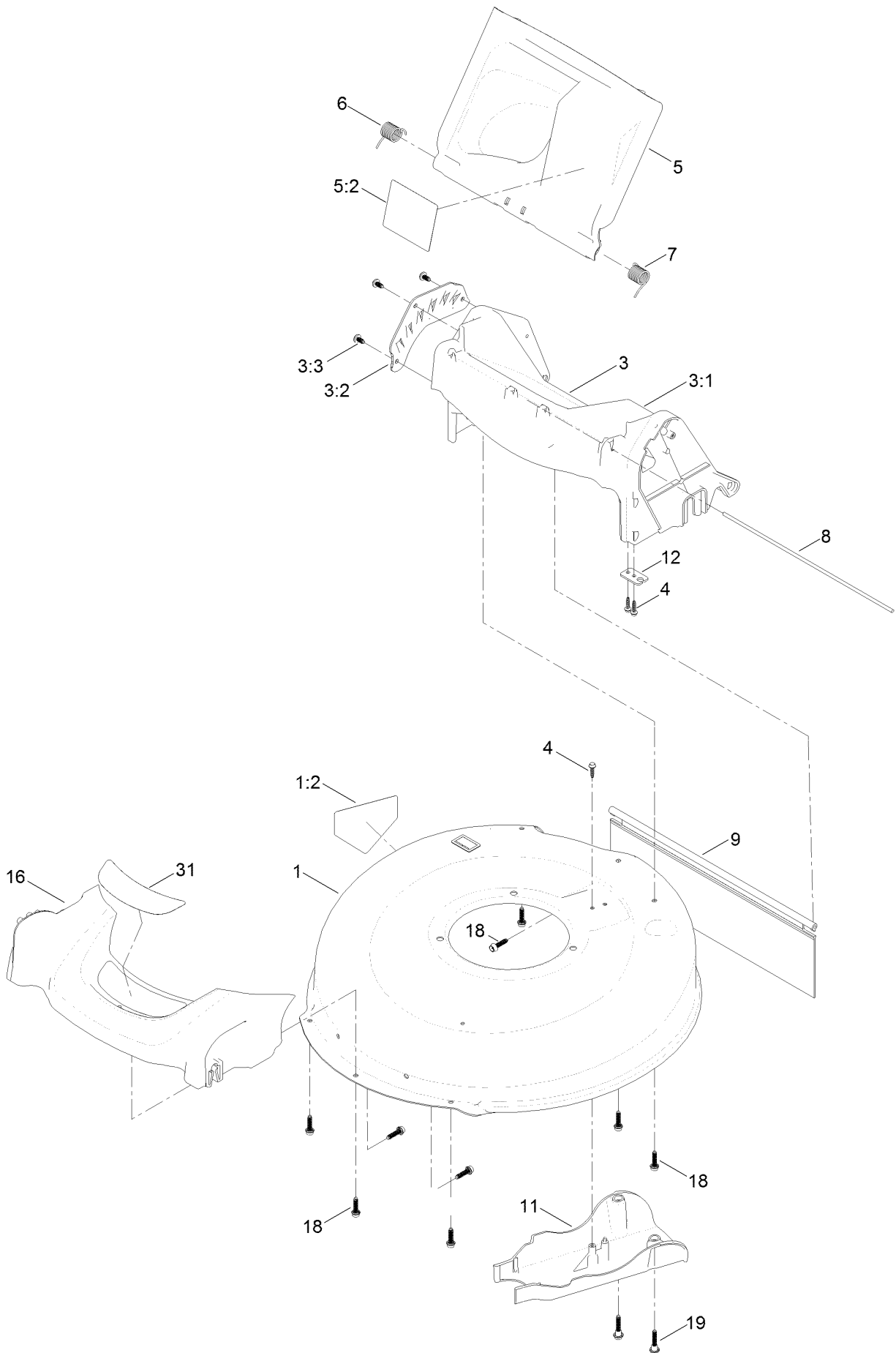
Rear Wheel Assembly ..... 12

Handle Assembly ..... 14

Electrical Assembly ..... 16

Attachments and Accessories ..... 18

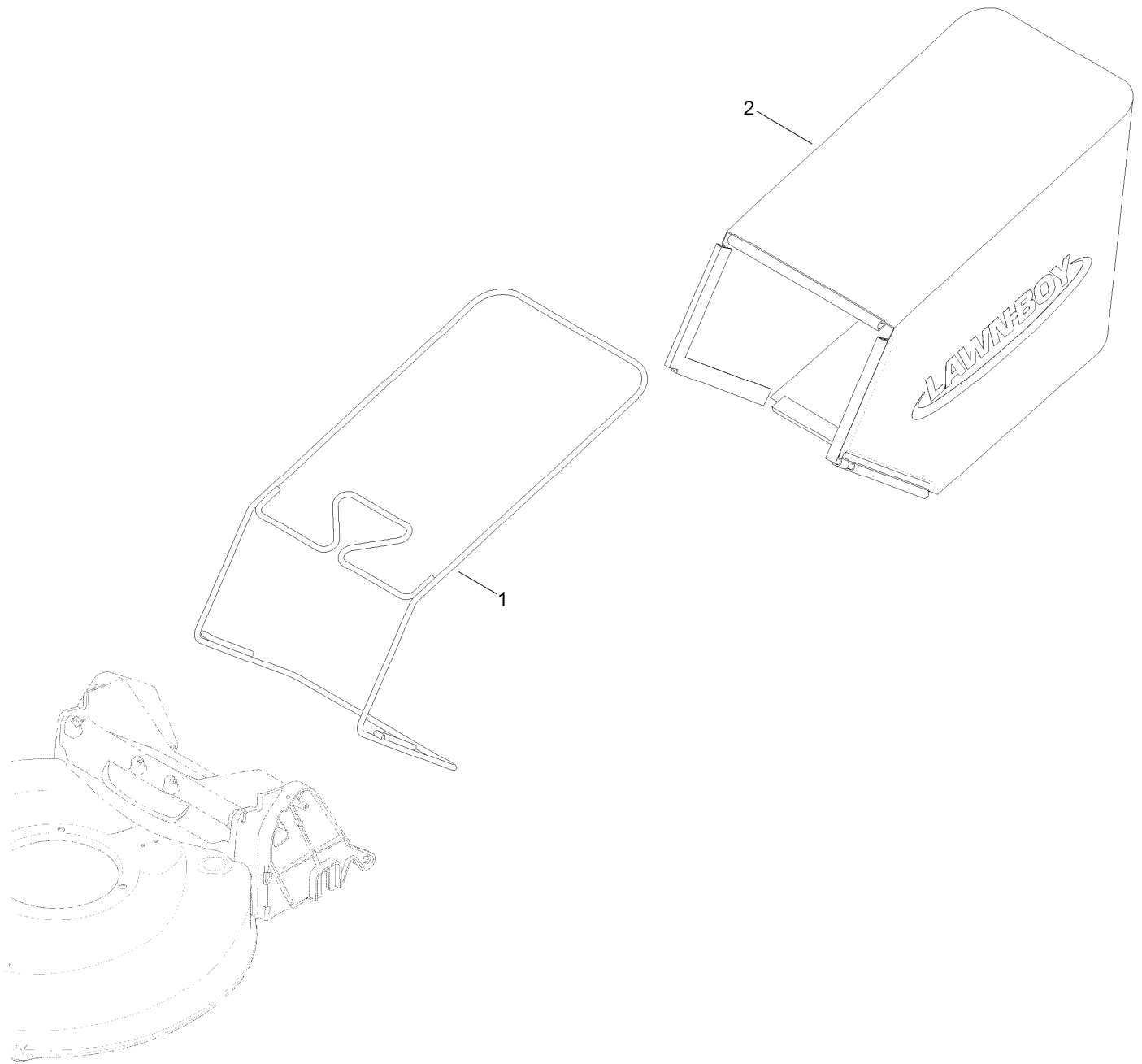
# Chute and Rear Door Assembly



## Chute and Rear Door Assembly (continued)

<i>Ref.</i>	<i>Part Number</i>	<i>Qty.</i>	<i>Description</i>	<i>Ref.</i>	<i>Part Number</i>	<i>Qty.</i>	<i>Description</i>
1	133-1938	1	Housing ASM	6	127-6807	1	Spring-Torsion
1:2	94-8072	1	Decal-Danger	7	127-6808	1	Spring-Torsion
3	133-1913	1	Chute ASM	8	127-0698	1	Rod-Door
3:1	133-1912	1	Chute-Sp/Awd	9	127-0724	1	Shield-Trailing
3:2	133-1905-03	1	Plate-HOC	11	127-0723	1	Cover-Belt
3:3	133-1936	3	Screw-Bosscrew, PH Internaltorx	12	127-0730	1	Bracket-Cable
4	127-6831	3	Screw-HWH	16	127-0677	1	Bumper
5	130-2368	1	Rear Deflector ASM	18	130-6658	7	Screw-Flange, Serrated
5:2	117-4143	1	Decal-Warning	19	131-0837	2	Screw-Shoulder, HHF
				31	127-6830	1	Decal-Deck

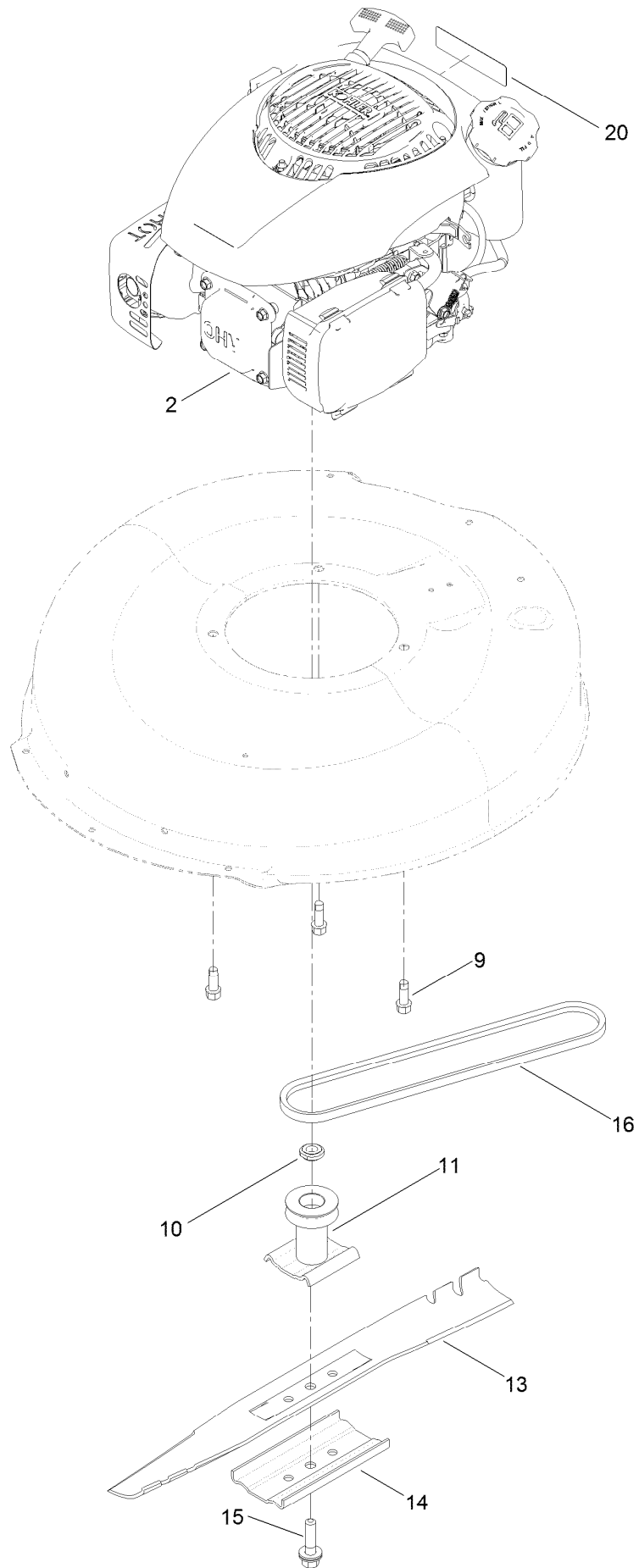
# Rear Bag Assembly



## Rear Bag Assembly (continued)

<i>Ref.</i>	<i>Part Number</i>	<i>Qty.</i>	<i>Description</i>
1	131-9697-03	1	Frame-Bag
2	127-0701	1	Grass Bag ASM

# Engine and Blade Assembly



## Engine and Blade Assembly (continued)

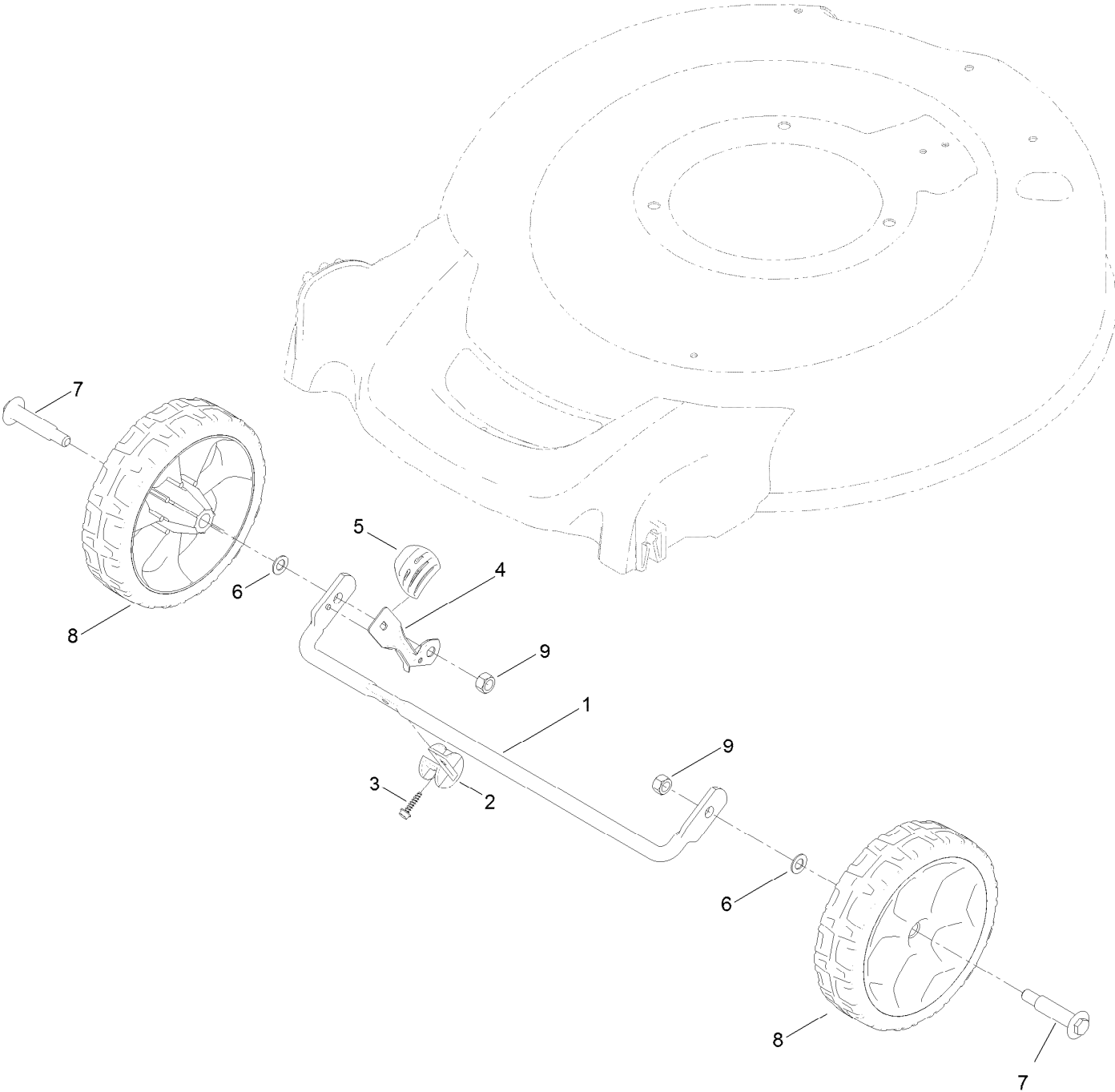
<i>Ref.</i>	<i>Part Number</i>	<i>Qty.</i>	<i>Description</i>
2		1	Engine-Kohler Xtx650-3013 ●■
9	95-1726	3	Screw-Taptite
10	106-3999	1	Spacer-Driver
11	106-3987	1	Driver-Blade

<i>Ref.</i>	<i>Part Number</i>	<i>Qty.</i>	<i>Description</i>
13	108-0954-03	1	Blade-21 Inch
14	108-3766-03	1	Support-Blade
15	125-2466	1	Bolt-Blade
16	110-9429	1	V-Belt
20	117-2718	1	Decal-Arrester, Spark

● Not serviced separately

■ Obtain parts from [www.kohlerplus.com](http://www.kohlerplus.com)

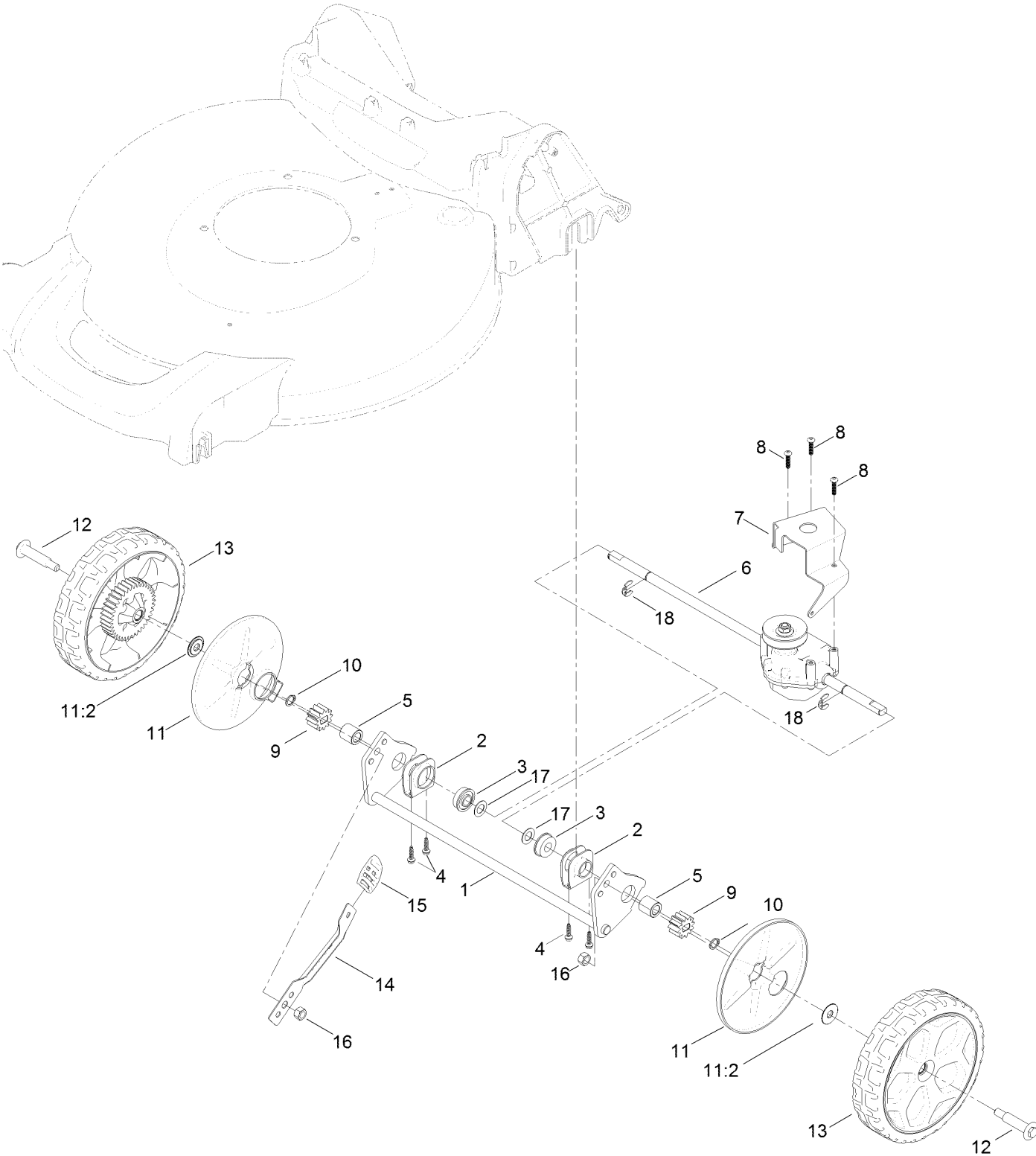
# Front Wheel Assembly



## Front Wheel Assembly (continued)

<i>Ref.</i>	<i>Part Number</i>	<i>Qty.</i>	<i>Description</i>	<i>Ref.</i>	<i>Part Number</i>	<i>Qty.</i>	<i>Description</i>
1	127-0668-03	1	Axle-Front	6	40-1940	2	Washer
2	127-6800	1	Stop-Axle	7	92-1057	2	Bolt-Shoulder
3	127-6831	1	Screw-HWH	8	127-0683	2	7 Inch Wheel ASM
4	127-0693	1	Arm-Spring	9	125-5069	2	Nut-Hex
5	105-3042	1	Knob-Lever, HOC				

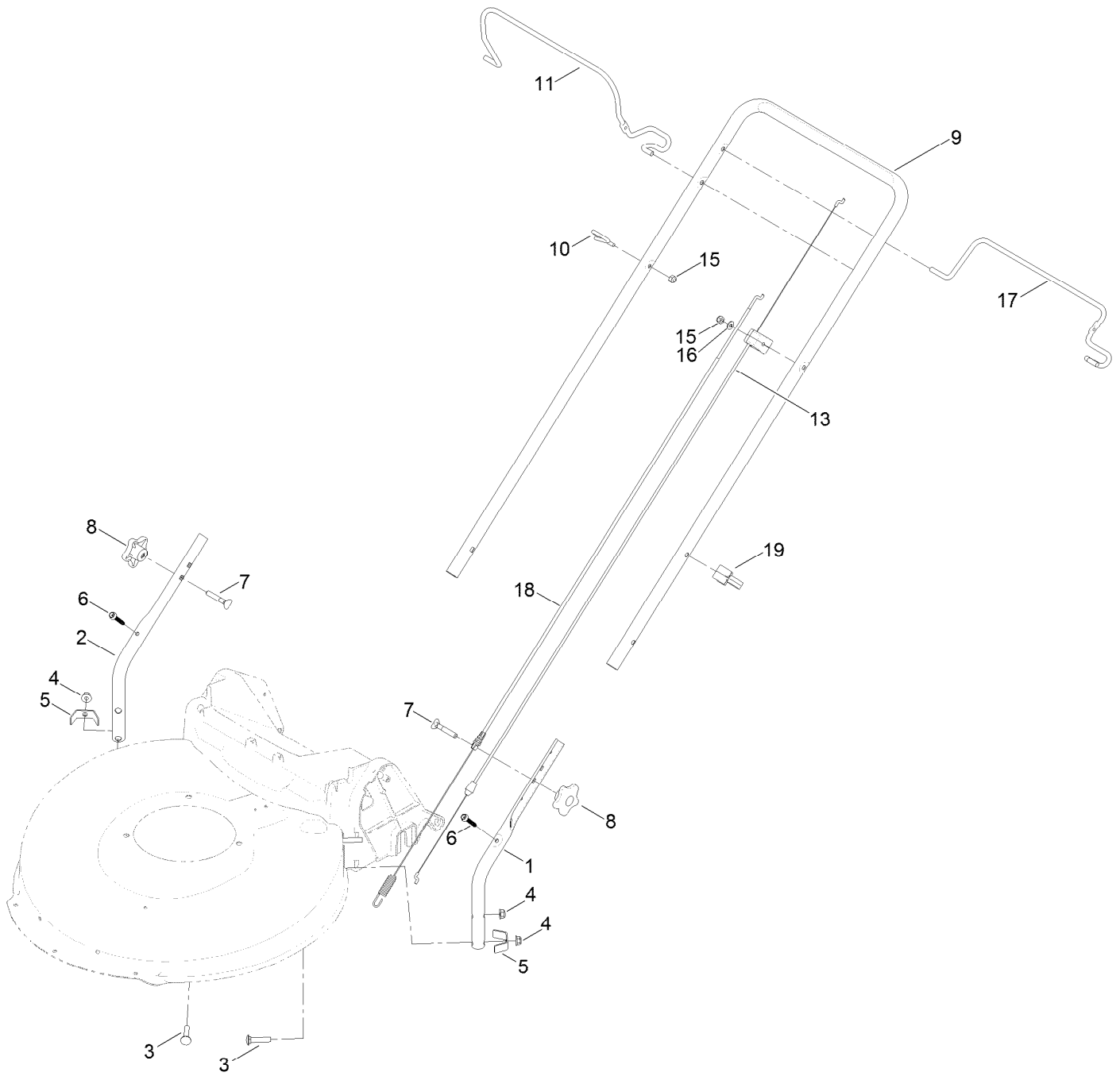
# Rear Wheel Assembly



## Rear Wheel Assembly (continued)

<i>Ref.</i>	<i>Part Number</i>	<i>Qty.</i>	<i>Description</i>	<i>Ref.</i>	<i>Part Number</i>	<i>Qty.</i>	<i>Description</i>
1	127-0708-03	1	Axle-Rear	11	127-6840	2	Wheel Cover ASM
2	127-0707	2	Retainer-Bearing	11:2	614426	1	Washer-Stepped
3	104-8699	2	Bearing-Ball	12	92-1057	2	Bolt-Shoulder
4	127-6831	4	Screw-HWH	13	127-0692	2	8 Inch Wheel Gear ASM
5	127-6896	2	Bushing-Sleeve	14	127-0711	1	Arm-Spring
6	131-0881	1	Transmission	15	105-3042	1	Knob-Lever, HOC
7	114-7977-03	1	Bracket-Transmission	16	125-5069	2	Nut-Hex
8	108-7476	3	Screw-Plastite	17	36-4780	2	Washer-Plain
9	115-4668	2	Gear-Pinion	18	65-2720	2	Ring-Clip, Locking
10	32151-61	2	Ring-Retaining				

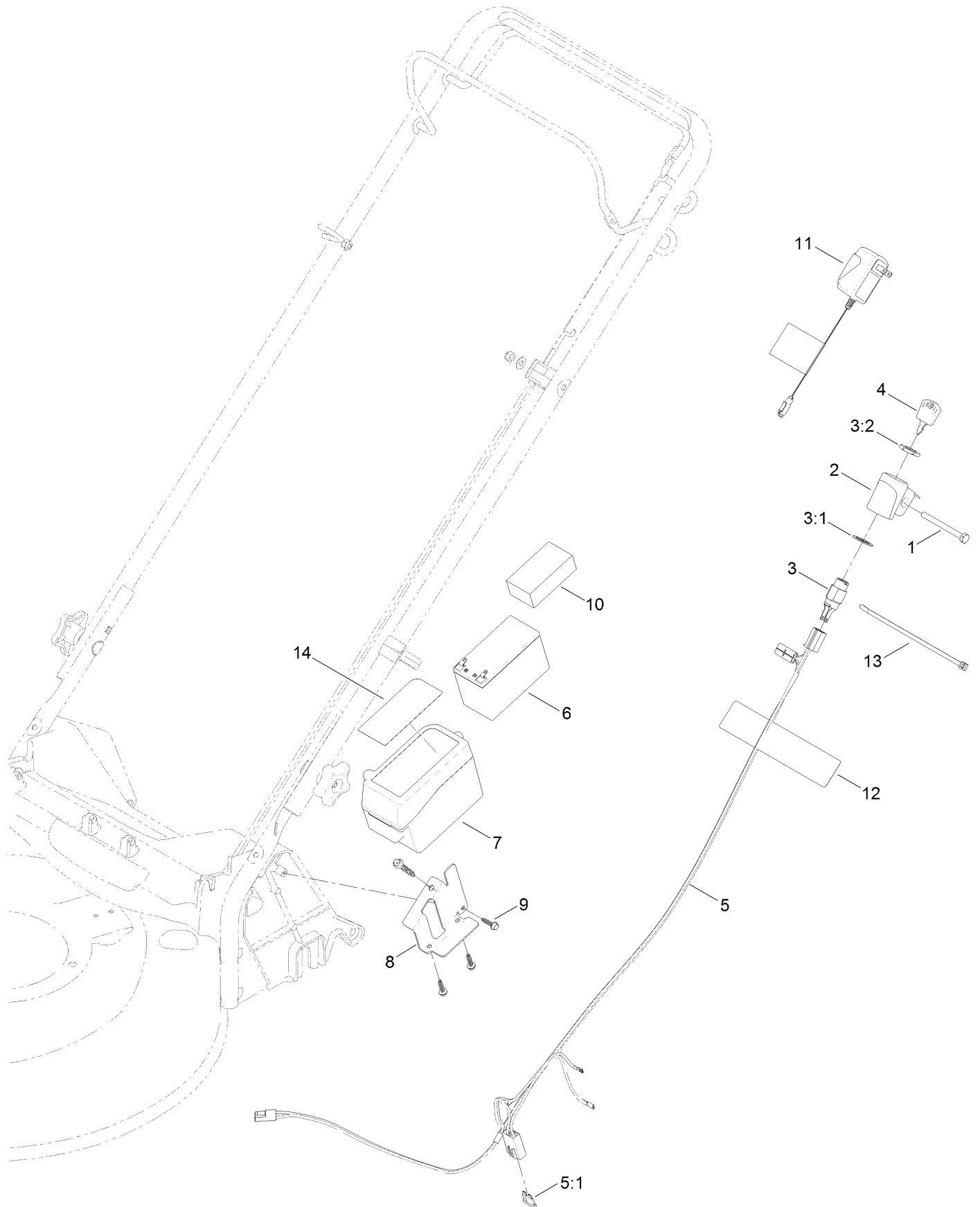
# Handle Assembly



## Handle Assembly (continued)

<i>Ref.</i>	<i>Part Number</i>	<i>Qty.</i>	<i>Description</i>	<i>Ref.</i>	<i>Part Number</i>	<i>Qty.</i>	<i>Description</i>
1	136-5923-05	1	Handle-Lower, LH	10	86-9671	1	Guide-Rope
2	136-5924-05	1	Handle-Lower, RH	11	127-0718-03	1	Bail-Brake
3	130-6654	4	Screw-CARR	13	112-8818	1	Cable-Brake
4	130-6655	4	Nut-Flange, NI	15	3296-73	2	Nut-Lock, NI
5	127-0699	2	Bracket-Chute	16	3256-1	1	Washer-Flat
6	130-6659	2	Screw-Flange, Serrated	17	127-0719-03	1	Bail-Traction
7	92-2260	2	Screw-Handle	18	127-0733	1	Cable-Traction
8	117-5976	2	Knob-Handle	19	114-7988	1	Guide-Cable
9	127-0659-05	1	Handle-Upper				

# Electrical Assembly



## Electrical Assembly (continued)

<i>Ref.</i>	<i>Part Number</i>	<i>Qty.</i>	<i>Description</i>	<i>Ref.</i>	<i>Part Number</i>	<i>Qty.</i>	<i>Description</i>
1	321-57	1	Screw-HH	7	127-0695	1	Battery Box ASM
2	108-9760	1	Mount-Switch	8	127-6835-03	1	Bracket-Battery
3	46-5780	1	Starter Switch ASM	9	127-6831	3	Screw-HWH
3:1	3254-5	1	Washer-Tooth, Internal	10	107-3774	1	Foam-Battery, Top
3:2	218-461	1	Nut-HH	11	114-1588	1	Charger-Battery
4	700918	1	Key	12	104-7953	1	Decal-Warning
5	127-6837	1	Harness-Wire	13	614249	2	Tie-Cable
5:1	99-6124	1	Fuse-40 Amp	14	130-6650	1	Decal
6	127-0694	1	Battery-Nonspillable, 12 V				

# Attachments and Accessories

## For 17734 21in Mulching/Rear Bagging Lawn Mower

Product Name	Model/Part
Lawn-Boy Paint .....	110-8800
Lawn-Boy Premium Fuel Treatment .5 Oz .....	130-6653
Lawn Striping Kit with 22in Roller.....	20601
Lawn-Boy WPM Cover .....	215326
21in Lawn-Boy Replacement Bag.....	89500
21in Lawn-Boy Bag and Frame Kit .....	89501
Side-Discharge Deflector.....	89502
Lawn-Boy Oil .....	89885
21in Blade.....	89914P

**Notes:**

