



Trimmer Mount Kit

Titan® HD Series Riding Mower

Model No. 136-1682

Installation Instructions

⚠ WARNING

CALIFORNIA Proposition 65 Warning

This product contains a chemical or chemicals known to the State of California to cause cancer, birth defects, or reproductive harm.

Installation

Loose Parts

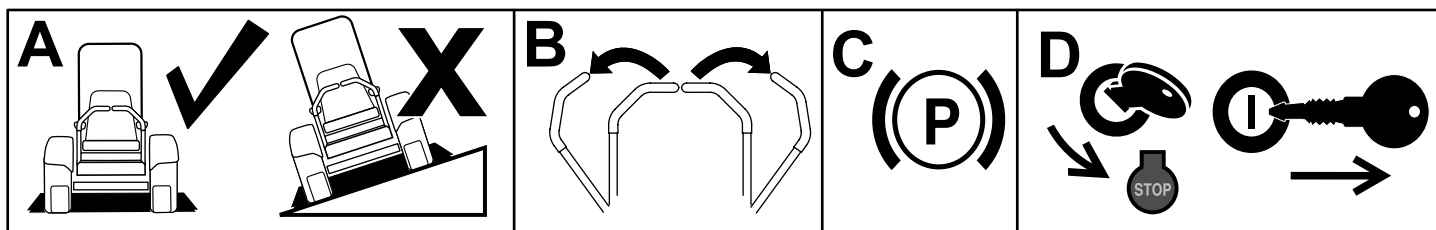
Use the chart below to verify that all parts have been shipped.

| Description | Qty. | Use |
|---------------------------------|------|---|
| No parts required | — | Prepare the machine. |
| Rear bracket | 1 | Assemble the kit. |
| Nut (1/4 inch) | 6 | |
| Large backer plate | 1 | |
| Large fist clamp | 1 | |
| Large fist-clamp bracket | 1 | |
| Bolt (1/4 x 5/8 inch) | 2 | |
| Bolt (1/4 x 1-1/2 inches) | 2 | |
| Bolt (1/4 x 1-1/4 inches) | 2 | |
| Small fist clamp | 1 | |
| Small backer plate | 1 | |
| Carriage bolt (5/16 x 7/8 inch) | 3 | |
| Small fist-clamp bracket | 1 | |
| Trimmer plate | 1 | |
| Nut (5/16 inch) | 2 | |
| Channel bracket | 1 | |
| Mount plate | 1 | |
| Knob | 1 | |
| Bolt (3/8 x 7/8 inch) | 2 | Mount the kit to the machine. |
| Nut (3/8 inch) | 2 | |
| Carriage bolt (3/8 x 3 inches) | 1 | |
| Wide-flange nut (3/8 inch) | 1 | |
| No parts required | — | Secure a trimmer to the mount assemblies. |



Preparing the Machine

1. Park the machine on a level surface.
2. Move the motion-control levers to the NEUTRAL-LOCK position.
3. Engage the parking brake.
4. Shut off the engine and remove the key.



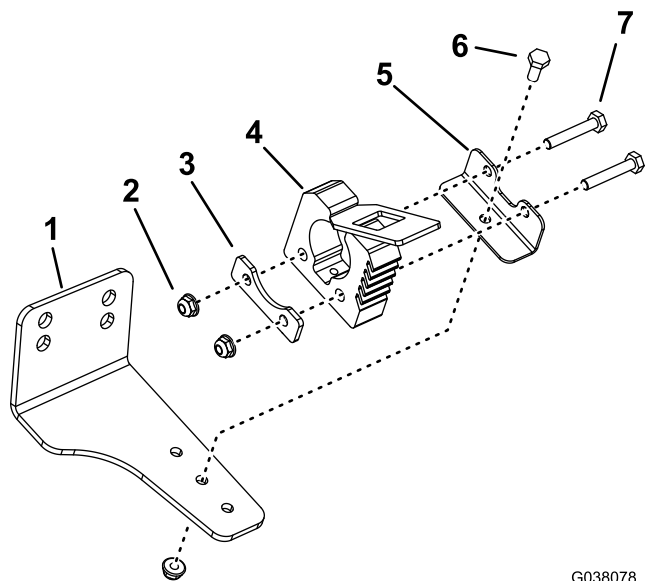
g037289
g037289

Figure 1

Assembling the Kit

1. Assemble the rear mount assembly (Figure 2).

Note: Mount the large fist-clamp bracket in 1 of the 3 holes to allow clearance between the trimmer engine and the machine when the trimmer is mounted.



G038078
g038078

Figure 2

- | | |
|-----------------------|------------------------------|
| 1. Rear bracket | 5. Large fist-clamp bracket |
| 2. Nut (1/4 inch) | 6. Bolt (1/4 x 5/8 inch) |
| 3. Large backer plate | 7. Bolt (1/4 x 1-1/2 inches) |
| 4. Large fist clamp | |

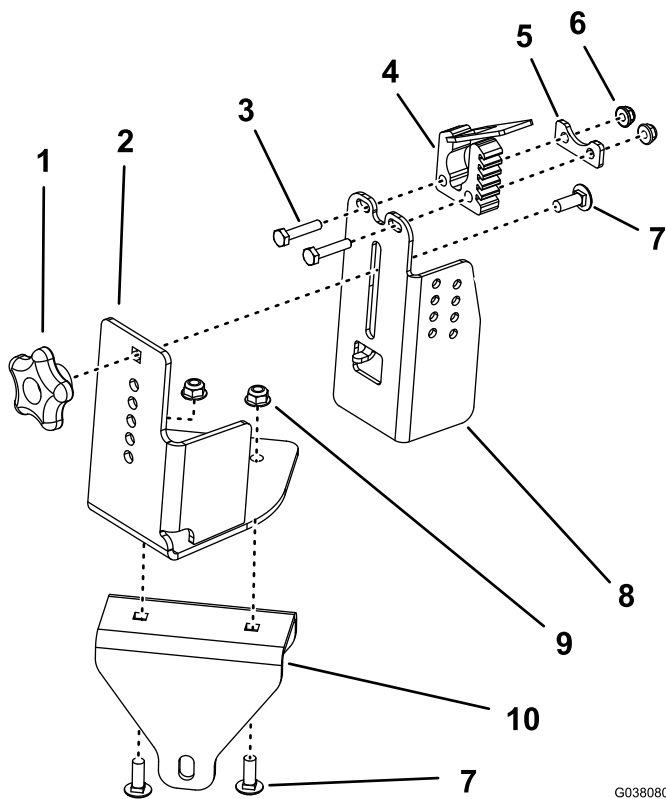


Figure 3

Assembly for Trimmers with a Straight Shaft

- | | |
|----------------------------|------------------------------------|
| 1. Knob | 6. Nut (1/4 inch) |
| 2. Mount plate | 7. Carriage bolt (5/16 x 7/8 inch) |
| 3. Bolt (1/4 x 1-1/4 inch) | 8. Trimmer plate |
| 4. Small fist clamp | 9. Nut (5/16 inch) |
| 5. Small backer plate | 10. Channel bracket |

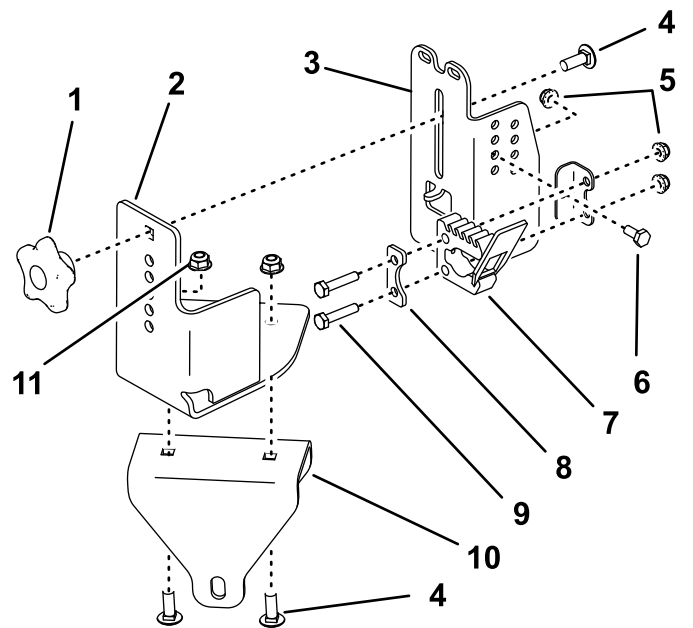


Figure 4

Assembly for Trimmers with a Curved Shaft

- | | |
|------------------------------------|----------------------------|
| 1. Knob | 7. Small fist clamp |
| 2. Mount plate | 8. Small backer plate |
| 3. Trimmer plate | 9. Bolt (1/4 x 1-1/4 inch) |
| 4. Carriage bolt (5/16 x 7/8 inch) | 10. Channel bracket |
| 5. Nut (1/4 inch) | 11. Nut (5/16 inch) |
| 6. Bolt (1/4 x 5/8 inch) | |

G038080
g038080

G038091
g038091

Mounting the Kit to the Machine

1. Install the rear mount assembly to the right side panel on the machine using 2 bolts (3/8 x 7/8 inch) and 2 nuts (3/8 inch) as shown in [Figure 5](#).

Note: Use the 2 front holes if you are mounting a curved trimmer.

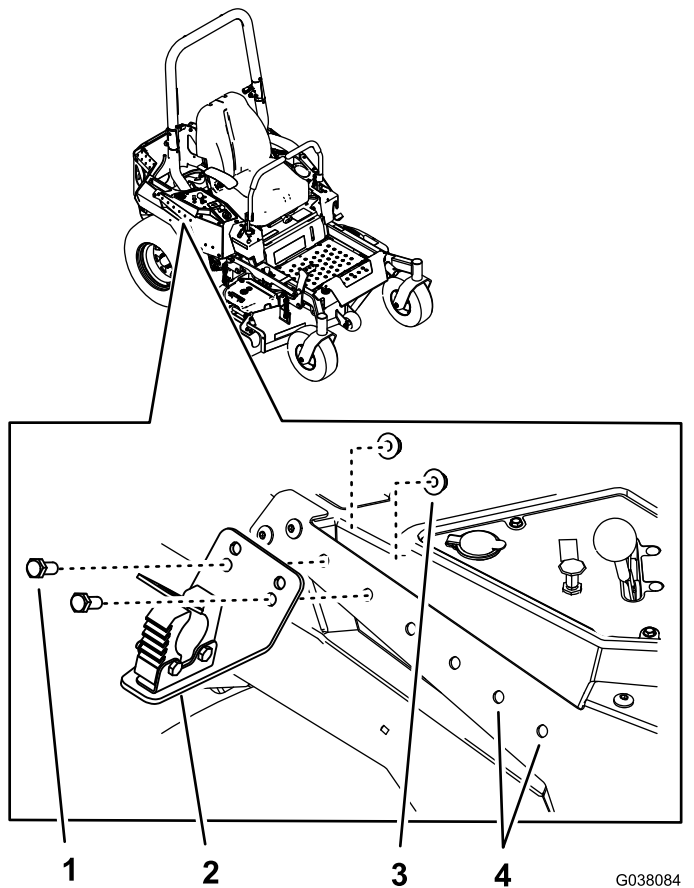


Figure 5

- | | |
|--------------------------|--|
| 1. Bolt (3/8 x 7/8 inch) | 3. Nut (3/8 inch) |
| 2. Rear mount assembly | 4. Use these holes if you are mounting a curved trimmer. |

2. Install the front mount assembly over the frame, near the right caster wheel, using the wide-flange nut (3/8 inch) and carriage bolt (3/8 x 3 inches) as shown in [Figure 6](#).

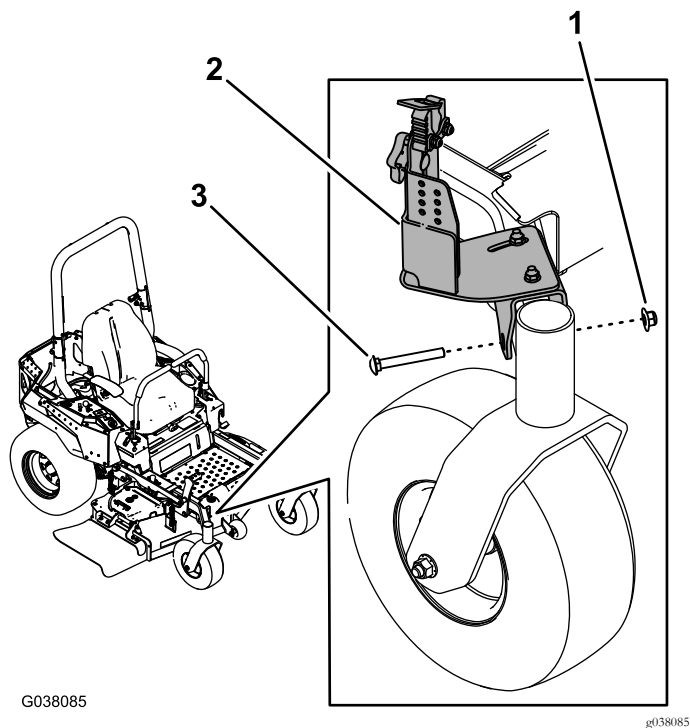


Figure 6

- | | |
|-------------------------------|-----------------------------------|
| 1. Wide-flange nut (3/8 inch) | 3. Carriage bolt (3/8 x 3 inches) |
| 2. Front mount assembly | |

Securing a Trimmer to the Mount Assemblies

1. Secure the rear end of the trimmer to the rear mount assembly using the large fist clamp.
2. Loosen the bolts securing the mount plate to the channel bracket in the front mount assembly ([Figure 7](#)).

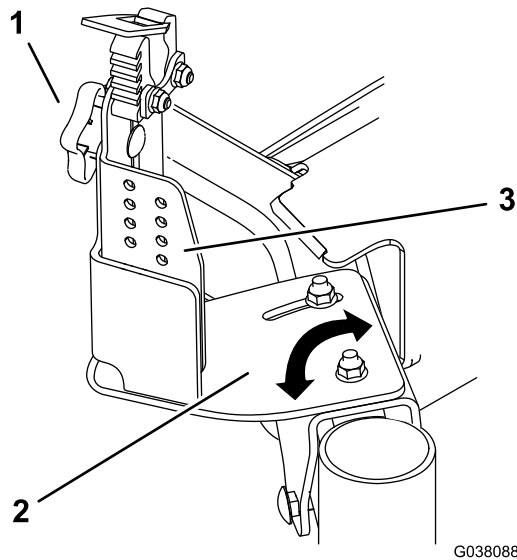


Figure 7

- | | |
|----------------|------------------|
| 1. Knob | 3. Trimmer plate |
| 2. Mount plate | |

-
3. Pivot the plate so that the small fist clamp lines up with the trimmer. Tighten the bolts.
 4. Loosen the knob and raise or lower the trimmer plate as necessary ([Figure 7](#)). Tighten the knob.
 5. Secure the front end of the trimmer to the front mount assembly using the fist clamp.

Notes:

Notes:



Count on it.