



Ballast Kit

Groundsmaster® 3500, 4500, or 4700 Series 27in Cutting Units

Model No. 136-2881

Installation Instructions

⚠ WARNING

CALIFORNIA Proposition 65 Warning

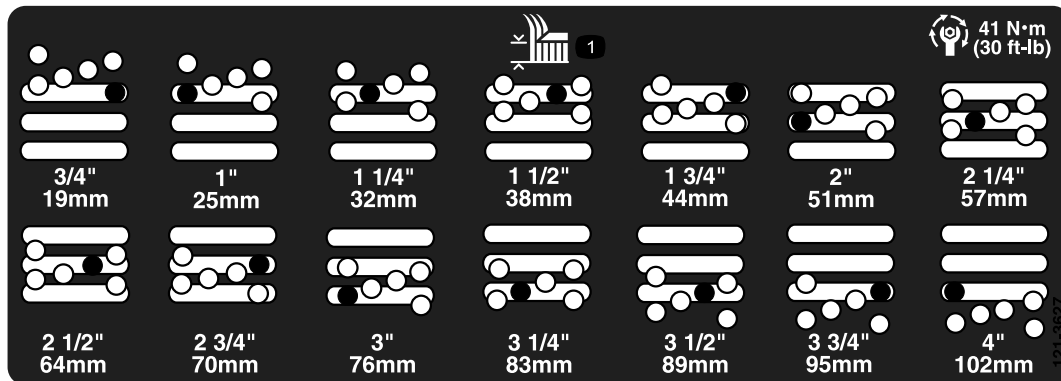
This product contains a chemical or chemicals known to the State of California to cause cancer, birth defects, or reproductive harm.

Safety

Safety and Instructional Decals



Safety decals and instructions are easily visible to the operator and are located near any area of potential damage. Replace any decal that is damaged or missing.



121-3627

decal121-3627

1. Height-of-cut settings



Installation

Loose Parts

Use the chart below to verify that all parts have been shipped.

Description	Qty.	Use
Ballast plate	8	Install the ballast plates.
Slotted screw	2	
Flange nut	2	
Height-of-cut decal	1	

Installing the Ballast Plates

Important: The ballast kit should be installed only when the UHMW front roller wheels are installed on the cutting unit. If you choose to install the cast iron roller wheels, the ballast kit should be removed from the cutting deck.

1. Park the machine on a level surface, lower the cutting units, engage the parking brake, shut off the engine, and remove the key from the ignition switch.
2. Using the dimensions shown in [Figure 1](#), locate and drill two 7/16 inch diameter holes through the cutting unit.

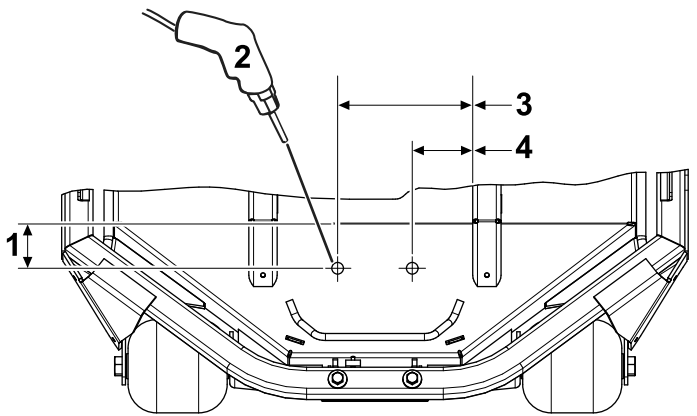


Figure 1

- | | |
|----------------------------------|---------------------------|
| 1. 6.05 cm (2.38 inches) | 3. 18.39 cm (7.24 inches) |
| 2. Drill hole—7/16 inch diameter | 4. 8.23 cm (3.24 inches) |

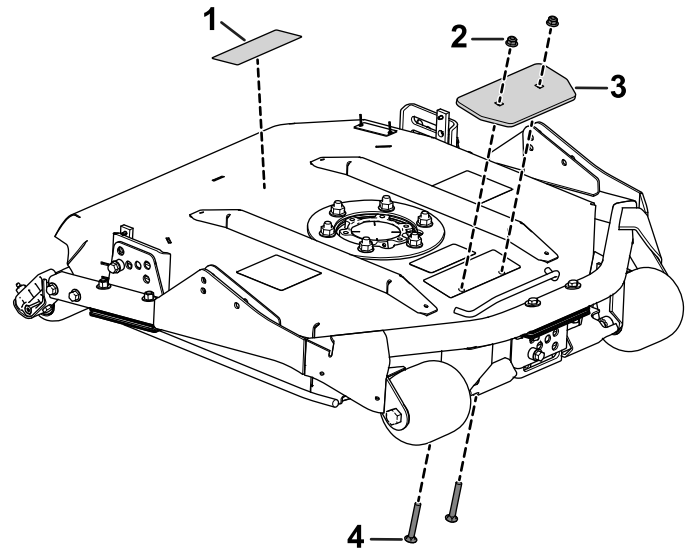


Figure 2

- | | |
|------------------------|------------------|
| 1. Height-of-cut decal | 3. Ballast plate |
| 2. Flange nut | 4. Slotted screw |

4. Use the flange nuts to secure the ballast plates to the cutting unit ([Figure 2](#)).

Note: It is recommended that you install each ballast plate (8) onto the cutting unit. However, the quantity can be adjusted as needed to properly balance the cutting unit.

5. Attach the height-of-cut decal toward the rear of the cutting unit ([Figure 2](#)).

3. Place a slotted screw through each drill hole ([Figure 2](#)).