



**Count on it.**

# Parts Catalog

## 72in Blower Kit

**Groundsmaster® 360 and 7200 Series Tripple  
Bagger Hopper**

**Model No. 31212—Serial No. 400000000 and Up**



# Ordering Replacement Parts

To order replacement parts, please supply the part number, the quantity, and the description of each part desired.

## Understanding Reference Numbers

Each identified part in an illustration has a reference number. The reference number for a part also appears in the parts list, along with other information about the part.

This catalog uses two special reference number formats, one to indicate parts in a service assembly and another to indicate the quantity of a given part in an illustration.

## Service Assembly Reference Numbers

Parts in service assemblies have reference numbers in the form a:b. The a represents the reference number of the entire service assembly and the b represents a sequential number unique to each part within the service assembly.

For example, a wheel assembly might be identified by reference number 6, the tire by 6:1, the valve by 6:2, and the wheel by 6:3. When you order the assembly identified by reference number 6, you receive all parts identified by reference numbers 6:1, 6:2, and 6:3. However, you may also order any part individually. Reference numbers of this type appear in illustration and in parts lists.

## Reference Numbers Indicating Quantity

In an illustration, if a reference number indicates more than one part, the reference number has the form nX y. The n represents the quantity of the part, the X is the multiplication symbol, and the y represents the reference number.

For example, in an illustration, the reference number 2X 37 means that two of the parts identified by reference number 37 are indicated.

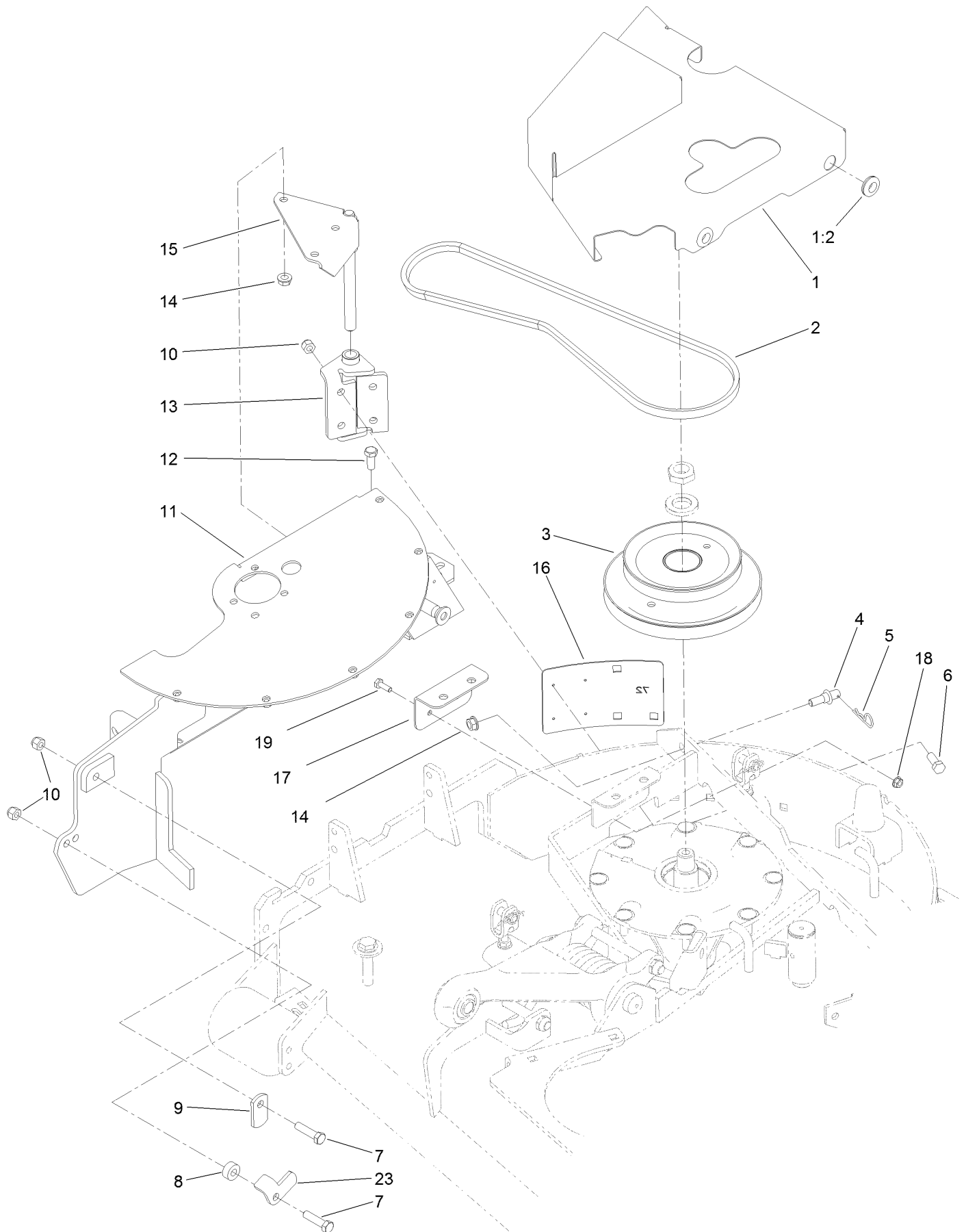
# Contents

Blower Mount Assembly ..... 4

Upper Housing and Impeller Assembly..... 6

Lower Tube and Bumper Assembly..... 8

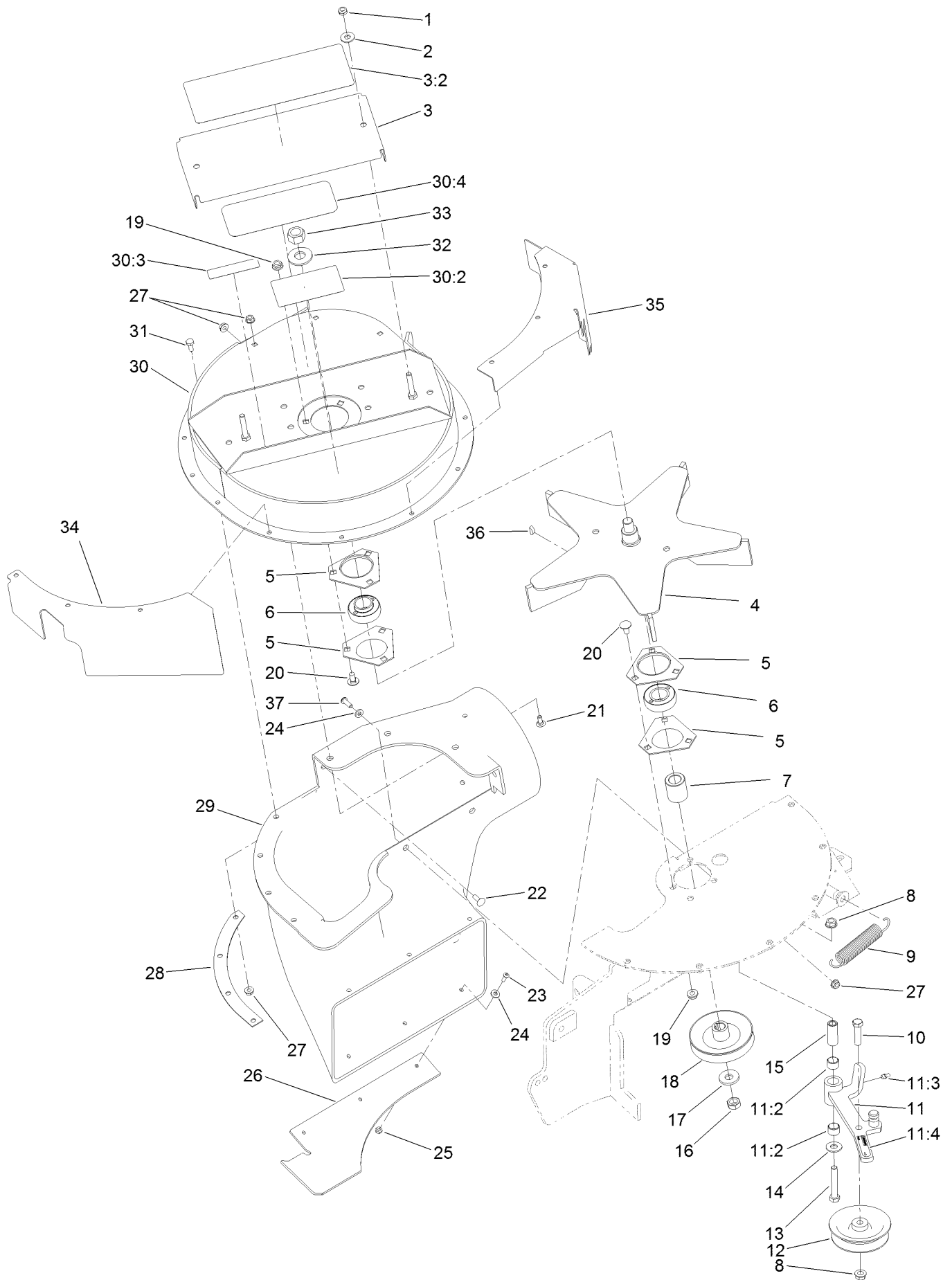
# Blower Mount Assembly



## Blower Mount Assembly (continued)

<i>Ref.</i>	<i>Part Number</i>	<i>Qty.</i>	<i>Description</i>	<i>Ref.</i>	<i>Part Number</i>	<i>Qty.</i>	<i>Description</i>
1	125-9263	1	Cover-Pulley	11	131-6140-03	1	Mount-Blower
1:2	240-9	3	Grommet	12	323-5	3	Screw-HH
2	112-2384	1	Belt-V	13	110-3914-01	1	Hinge
3	125-4430	1	Pulley	14	3290-357	3	Nut-HHF, Whiz
4	125-4435	1	Pin-Mount	15	103-0445-03	1	Pin-Mount
5	9335054	1	Pin-Hair	16	125-4429	1	Template-Mount
6	323-6	4	Screw-HH	17	132-7996-03	1	Bracket-Cover
7	323-8	2	Screw-HH	18	32128-33	2	Nut-HF
8	104-8426	1	Spacer	19	321-4	2	Screw-HH
9	1-353054	1	Latch-Catcher, Grass	23	112-1787	1	Latch-Stop
10	3296-39	6	Nut-Lock, NI				

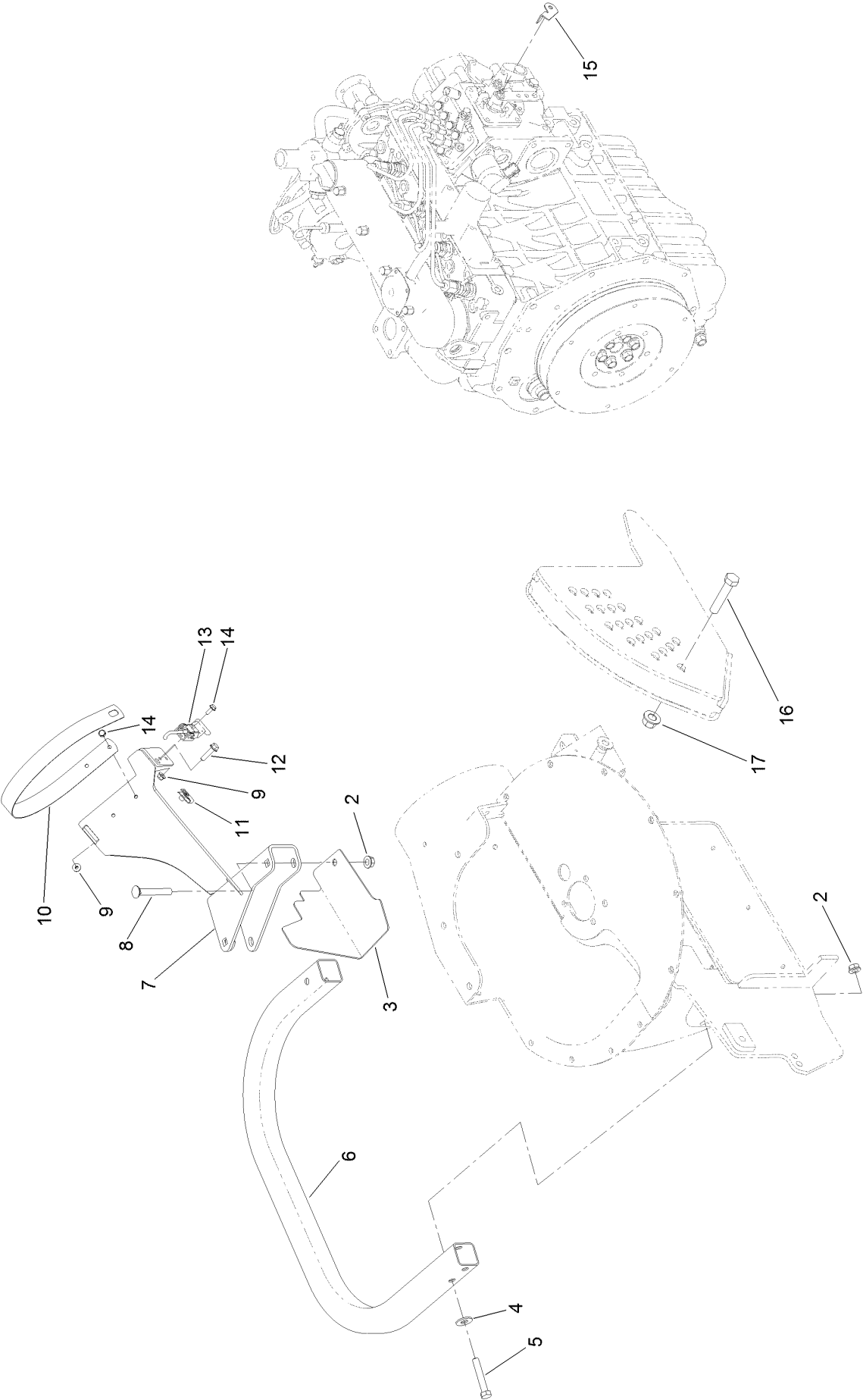
# Upper Housing and Impeller Assembly



## Upper Housing and Impeller Assembly (continued)

<i>Ref.</i>	<i>Part Number</i>	<i>Qty.</i>	<i>Description</i>	<i>Ref.</i>	<i>Part Number</i>	<i>Qty.</i>	<i>Description</i>
1	3296-47	2	Nut-Lock, NI	19	32128-20	6	Nut-HF
2	3256-3	2	Washer-Flat	20	3230-18	6	Screw-CARR
3	117-0935	1	Bearing Cover ASM	21	3229-11	3	Screw-CARR
3:2	117-0923	1	Decal-Danger	22	3229-1	2	Bolt-CARR
4	103-0455	1	Impeller	23	3274-39	3	Screw-HSBH
5	1-513013	4	Housing-Flange	24	3256-16	5	Washer-Flat
6	1-653346	2	Bearing	25	3296-2	3	Nut-Lock, NI
7	103-0460	1	Spacer	26	110-0328-03	1	Plate-Bottom
8	3290-357	2	Nut-HHF, Whiz	27	32128-33	11	Nut-HF
9	112-2346	1	Spring-Extension	28	103-0461-03	1	Plate-Backing, Blower
10	323-8	1	Screw-HH	29	109-1134	1	Chute-Blower
11	110-0339	1	Idler Arm ASM	30	112-1773	1	Upper Housing ASM
11:2	1-653600	2	Bushing	30:2	106-3339	1	Decal-Warning
11:3	302-19	1	Fitting-Grease	30:3	98-5954	1	Decal-Cover, Missing
11:4	1-653558	1	Decal-Warning	30:4	112-1770	1	Decal
12	103-1103	1	Idler-Flat	31	321-3	10	Screw-HH
13	323-11	1	Screw-HH	32	1-513208	1	Washer-Spring
14	3256-4	1	Washer-Flat	33	3219-6	1	Nut-Hex
15	1-603044	1	Bushing	34	131-6143-03	1	Guard-Front
16	3220-5	1	Nut-Jam	35	132-7995-03	1	Guard-Back
17	1-513435	1	Washer-Spring	36	3257-32	1	Key-Woodruff
18	103-0456	1	Sheave	37	3274-69	2	Screw-HSBH

Lower Tube and Bumper Assembly



## Lower Tube and Bumper Assembly (continued)

<i>Ref.</i>	<i>Part Number</i>	<i>Qty.</i>	<i>Description</i>	<i>Ref.</i>	<i>Part Number</i>	<i>Qty.</i>	<i>Description</i>
2	3290-357	4	Nut-HHF, Whiz	10	132-8168-03	1	Strap
3	132-7999-03	1	Guard-Lower	11	107069	1	Clip
4	3256-4	2	Washer-Flat	12	120-4654	1	Screw-HHF
5	323-11	2	Screw-HH	13	132-8164	1	Latch-Draw
6	103-0458-01	1	Bumper	14	3290-321	4	Screw-HWH
7	132-8165-03	1	Support	15	117-9225	1	Stop-Throttle
8	3231-31	2	Screw-CARR	16	325-10	1	Screw-HH
9	120-4578	4	Nut-HF	17	99-5107	1	Nut-Lock

**Notes:**

**Notes:**



**Count on it.**