



**Count on it.**

# Parts Catalog

## **Rear Roller Brush MVP Kit**

**Reelmaster® 3555, 5010, and 5010-H Series  
22-Inch Cutting Unit with 5-Inch Reel and  
Universal Groomer**

Model No. 133-0153



# Ordering Replacement Parts

To order replacement parts, please supply the part number, the quantity, and the description of each part desired.

## Understanding Reference Numbers

Each identified part in an illustration has a reference number. The reference number for a part also appears in the parts list, along with other information about the part.

This catalog uses two special reference number formats, one to indicate parts in a service assembly and another to indicate the quantity of a given part in an illustration.

## Service Assembly Reference Numbers

Parts in service assemblies have reference numbers in the form a:b. The a represents the reference number of the entire service assembly and the b represents a sequential number unique to each part within the service assembly.

For example, a wheel assembly might be identified by reference number 6, the tire by 6:1, the valve by 6:2, and the wheel by 6:3. When you order the assembly identified by reference number 6, you receive all parts identified by reference numbers 6:1, 6:2, and 6:3. However, you may also order any part individually. Reference numbers of this type appear in illustration and in parts lists.

## Reference Numbers Indicating Quantity

In an illustration, if a reference number indicates more than one part, the reference number has the form nX y. The n represents the quantity of the part, the X is the multiplication symbol, and the y represents the reference number.

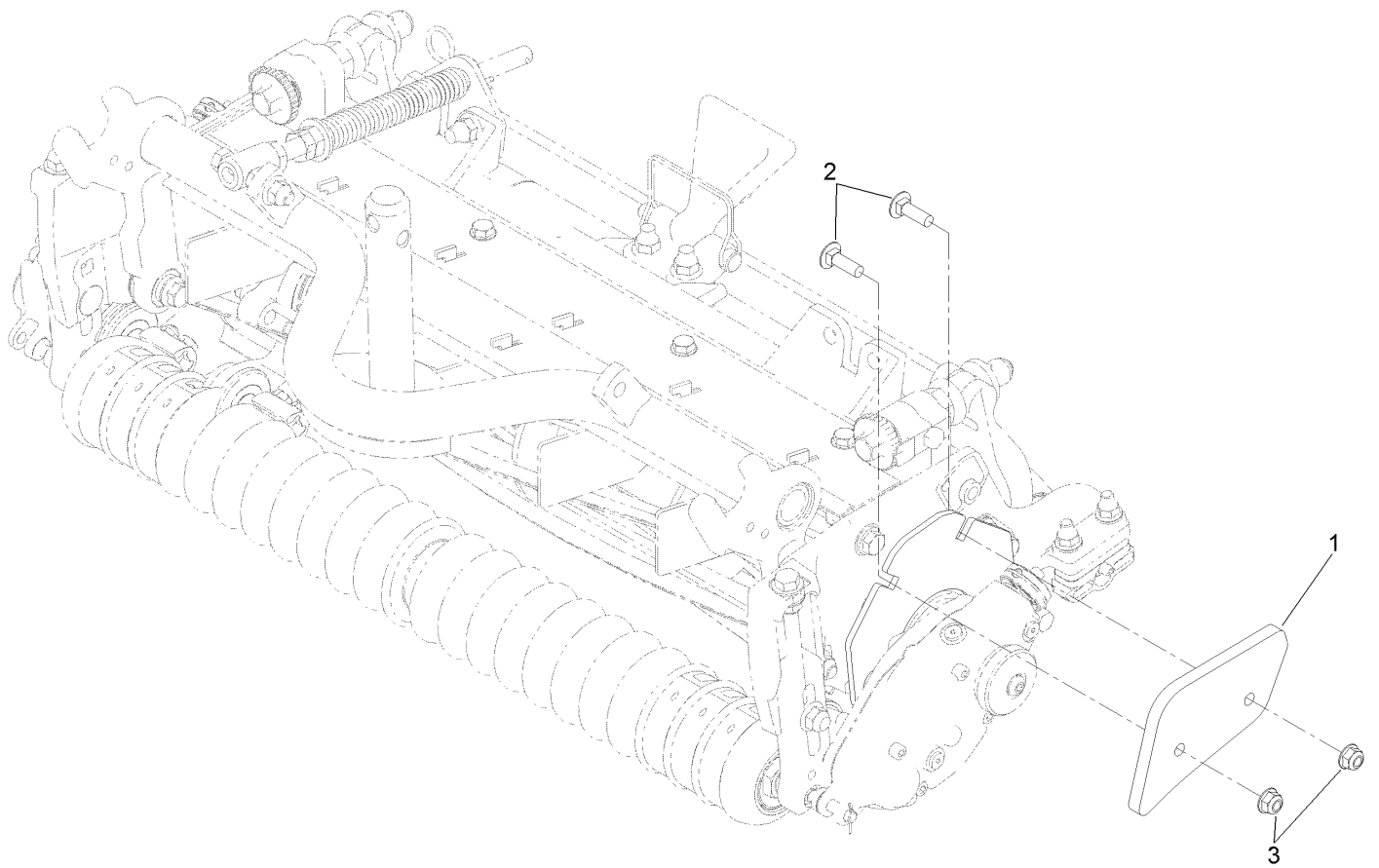
For example, in an illustration, the reference number 2X 37 means that two of the parts identified by reference number 37 are indicated.

# Contents

Weight Assembly ..... 4

Roller Brush Assembly ..... 5

Plate Assembly ..... 6



## Weight Assembly

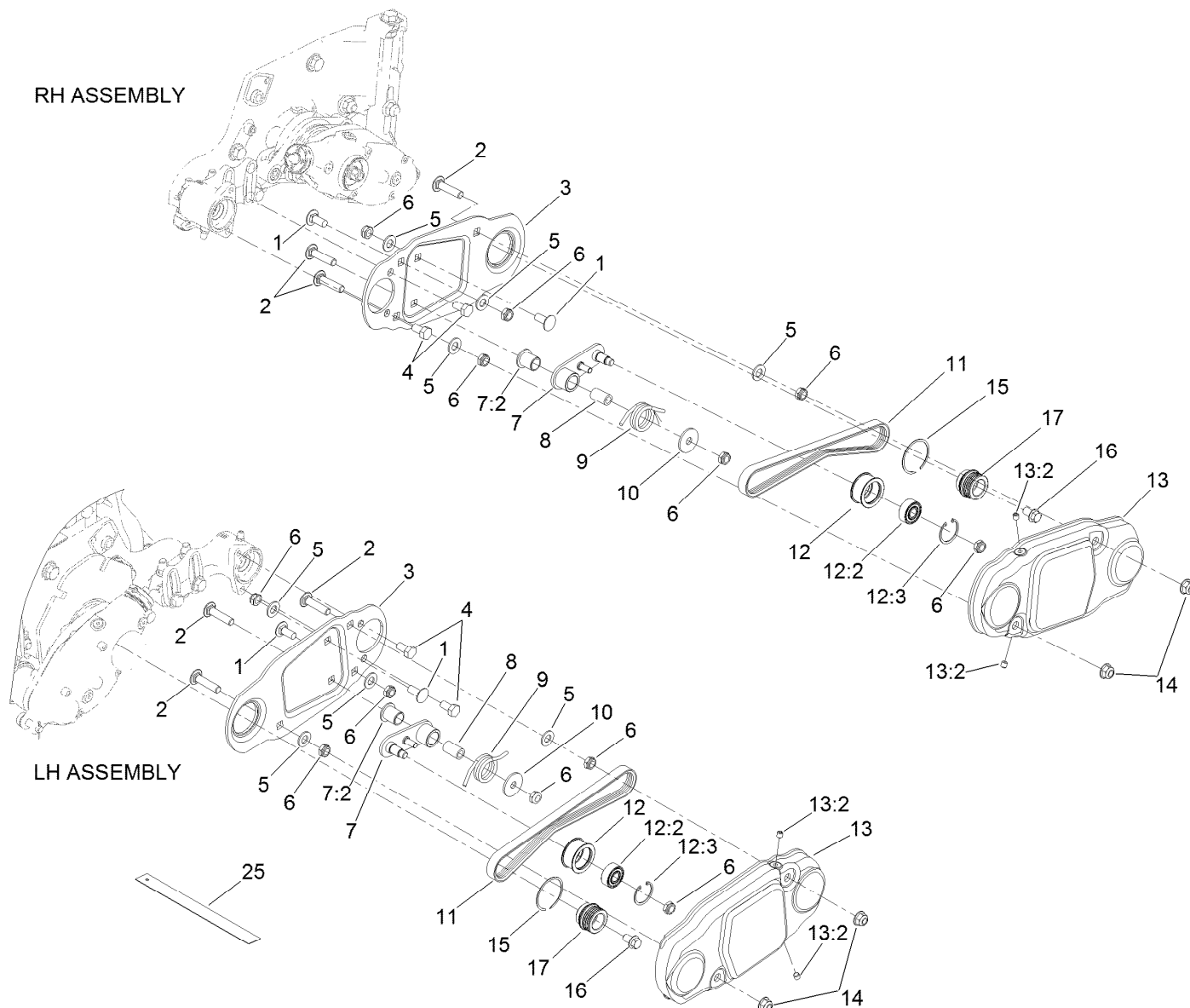
Ref.	Part Number	Qty.	Description
1	132-0734-03	1	Weight-Groomer/RRB 5 Inch
2	3230-2	2	Bolt-CARR
3	104-8300	2	Nut-Flange, NI



<b>Ref.</b>	<b>Part Number</b>	<b>Qty.</b>	<b>Description</b>
4:5	3296-2	2	Nut-Lock, NI
5	104-8300	4	Nut-Flange, NI
6	108-4480	2	Bracket-Mounting
7	108-4172	2	Seal-Excluder
8	94-6936	4	Washer-Hardened
9	322-16	4	Screw-HH
10	108-4491	1	Spacer
11	112-6957	2	Washer-Hardened
12	115-0821	1	Pulley-Driven, RRB (5-Rib)
13	104-8301	1	Nut-Flange, NI
14	104-1843	1	Fitting-Grease, 90 DEG
25	131-3233	1	Groomer/RRB Seal Kit ●
25:1	95-0707	2	Bearing-Aligning, Self
25:2	106-8530	3	Seal-Grease
25:3	108-4172	2	Seal-Excluder

3411-987A

## RH ASSEMBLY



## Plate Assembly

Ref.	Part Number	Qty.	Description
1	3230-23	2	Screw-CARR
2	112-6950	3	Screw-CARR
3	131-1881-03	1	Plate-Drive, 5 Inch
4	322-2	2	Screw-HH
5	3256-45	4	Washer-Flat
6	3296-47	6	Nut-Lock, NI
7	115-0834	1	Idler Arm ASM
7:2	125-8775	1	Bushing-Flange
8	115-0826	1	Spacer-Idler
9	115-0839	1	Spring-Idler
10	5-4460	1	Washer-Pivot

Ref.	Part Number	Qty.	Description
11	115-0894	1	Belt-Brush, 5 Inch (5-Rib)
12	114-9397	1	Idler Pulley ASM
12:2	110-1701	1	Bearing
12:3	32151-60	1	Ring-Snap
13	115-0898	1	Brush Cover ASM
13:2	108-0989	2	Screw-Set
14	104-8300	2	Nut-Flange, NI
15	131-1880	1	Ring-Retaining, EXT
16	100-1719	1	Screw-Flange
17	131-1891	1	Pulley-Drive, 5 Inch
25	114-5446	1	Tool-Alignment ●

● Optional Equipment

**Notes:**



**Count on it.**