



# Basket Kit

## 27-inch DPA Reel Mower for Reelmaster® 3100-D Series Traction Unit

Model No. 03185

### Installation Instructions

#### ⚠ WARNING

##### CALIFORNIA Proposition 65 Warning

This product contains a chemical or chemicals known to the State of California to cause cancer, birth defects, or reproductive harm.

## Installation

### Loose Parts

Use the chart below to verify that all parts have been shipped.

Procedure	Description	Qty.	Use
<b>1</b>	No parts required	–	Prepare the machine.
<b>2</b>	Roller bumper Flange-head screws (8 x 16 mm)	1 2	Mount the roller bumper.
<b>3</b>	Hydro guard Bolt (5/16 x 1 inch)	1 1	Mount the hydro guard.
<b>4</b>	Guide assembly Bracket assembly Carriage bolt (5/16 x 1 inch) Flange nut (5/16 inch) Basket bracket with guide assembly (right) Basket bracket with bracket assembly (left) Bolt (5/16 x 2-1/4 inch) Flange nut (5/16 inch)	2 2 4 4 1 1 2 2	Install the basket mounting assemblies.
<b>5</b>	Cut-off bar Bolt (1/4 x 1-3/4 inches) Locknut (1/4 inch)	1 4 4	Install the cut-off bar.
<b>6</b>	No parts required	–	Install the new grass deflector.
<b>7</b>	Flange locknut (3/8 inch)	2	Remove the support tube.
<b>8</b>	No parts required	–	Assemble the rear grass basket.
<b>9</b>	Basket	3	Mount the baskets to the cutting units.



Procedure	Description	Qty.	Use
<b>10</b>	No parts required	–	Adjust the front basket position.
<b>11</b>	No parts required	–	Adjust the rear basket position.
<b>12</b>	No parts required	–	Adjust the rear basket lip bracket.
<b>13</b>	No parts required	–	Adjust the rear grass shield.
<b>14</b>	No parts required	–	Adjust the roller bumper.

**Note:** The 27 inch rear roller brush kit (Model 03186), will not work with the rear grass basket on the Reelmaster 3100 Grass Basket Kit (Model 03185). The rear cutting unit can be fitted with the Rear Roller Scraper Kit (Part No. 114-9368) in place of the rear roller brush kit.

# 1

## Preparing the Machine

### No Parts Required

### Procedure

1. Park the machine on a level surface.
2. Engage the parking brake.
3. Shut off the engine, and remove the key.

# 2

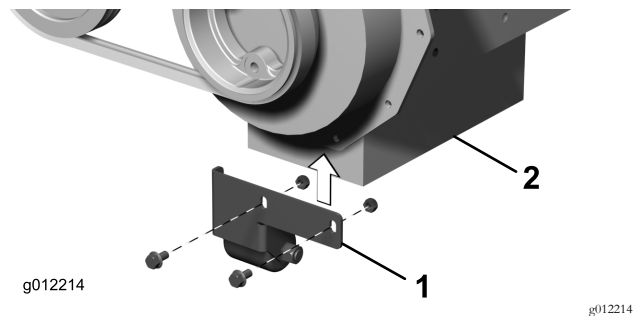
## Mounting the Roller Bumper

### Parts needed for this procedure:

1	Roller bumper
2	Flange-head screws (8 x 16 mm)

### Procedure

Mount the roller bumper to the engine flange with 2 flange-head screws (8 x 16 mm); refer to [Figure 1](#).



**Figure 1**

1. Roller bumper
2. Engine

# 3

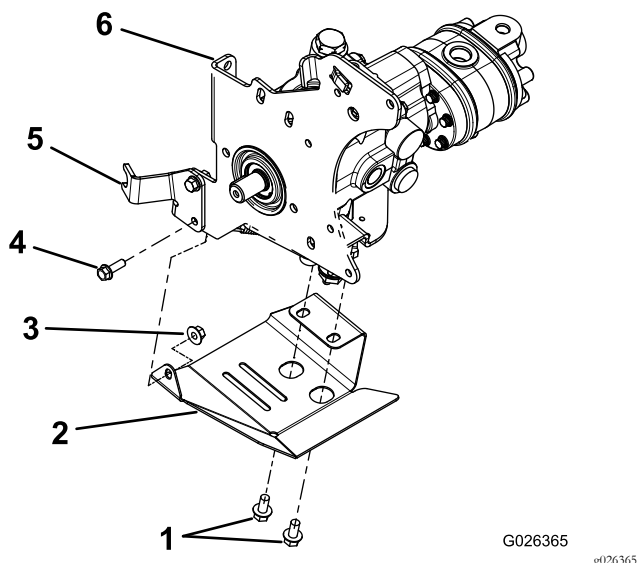
## Mounting the Hydro Guard

### Parts needed for this procedure:

1	Hydro guard
1	Bolt (5/16 x 1 inch)

### Procedure

1. Remove the bolt and nut securing the lower end of the cable support bracket to the pump plate ([Figure 2](#)). Discard the bolt but retain the nut.



**Figure 2**

- |                |                          |
|----------------|--------------------------|
| 1. Bolt (2)    | 4. Bolt                  |
| 2. Hydro guard | 5. Cable support bracket |
| 3. Nut         | 6. Pump plate            |

- Remove and retain the (2) bolts securing the neutral bracket to the underside of the hydro ([Figure 2](#)).
- Loosely attach the new hydro guard and the neutral bracket to the underside of the hydro with the (2) bolts removed in the prior step. Do not tighten the bolts at this time ([Figure 2](#)).
- Loosely attach the cable support bracket to the pump plate with the new bolt (supplied in the kit) and the nut previously removed ([Figure 2](#)).
- Tighten all the bolts and nuts.

# 4

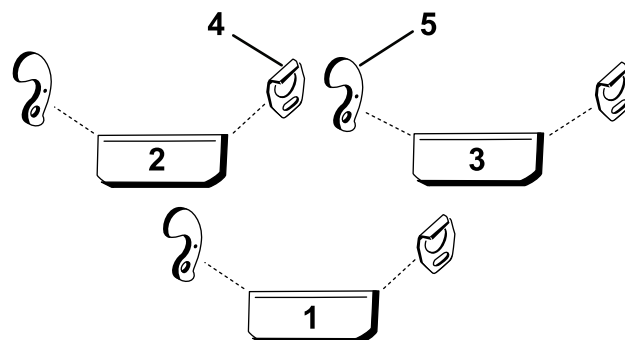
## Installing the Basket Mounting Assemblies

### Parts needed for this procedure:

2	Guide assembly
2	Bracket assembly
4	Carriage bolt (5/16 x 1 inch)
4	Flange nut (5/16 inch)
1	Basket bracket with guide assembly (right)
1	Basket bracket with bracket assembly (left)
2	Bolt (5/16 x 2-1/4 inch)
2	Flange nut (5/16 inch)

### Procedure

- Remove the cutting units from cartons. Assemble and adjust them per the *Operator's Manual* for the cutting unit.
- Use [Figure 3](#) to determine the locations at which the guide assemblies or bracket assemblies must be mounted to cutting unit carrier frames.



**Figure 3**

- |                       |            |
|-----------------------|------------|
| 1. Center basket      | 4. Guide   |
| 2. Left front basket  | 5. Bracket |
| 3. Right front basket |            |

### Front Cutting Units

- Mount a guide assembly to the inside of the right end of each carrier frame with 2 carriage bolts (5/16 x 1 inch) and flange nuts (5/16 inch) as shown in [Figure 4](#).

**Note:** The carriage bolts and flange bolts are shipped installed on the guide assembly.

- Mount a bracket assembly to the inside of the left end of each carrier frame with 2 carriage bolts (5/16 x 1 inch) and flange nuts (5/16 inch) as shown in [Figure 4](#).

**Note:** The carriage bolts and flange bolts are shipped installed on the guide assembly.

### Rear Cutting Unit

**Important:** Use the red colored rear stop-basket when operating in rugged terrain to help retain the rear basket.

5. Insert the right basket bracket with guide assembly onto the right end of the cutting unit carrier frame tube (Figure 5).

**Note:** The carriage bolts and flange bolts are shipped installed in the middle position on the bracket assembly to ease final adjustment later.

6. Align the holes in the basket bracket with the hole in the carrier frame tube and secure with a bolt (5/16 x 2-1/4 inch) and flange nut (5/16 inch) positioning as shown in Figure 5.

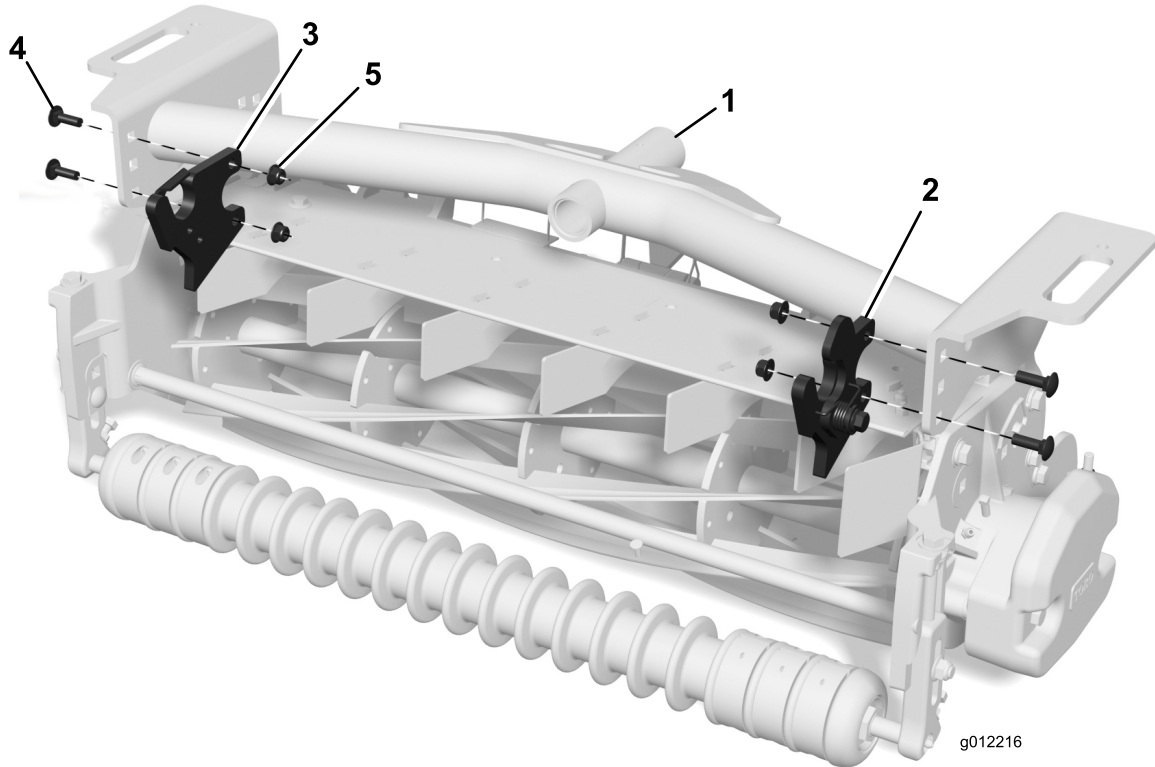
**Note:** The bolt must be threaded through the far wall of the tube.

7. Insert the left basket bracket with bracket assembly onto the left end of the cutting unit carrier frame tube (Figure 5).

**Note:** The carriage bolts and flange bolts are shipped installed in the middle position on the bracket assembly to ease final adjustment later.

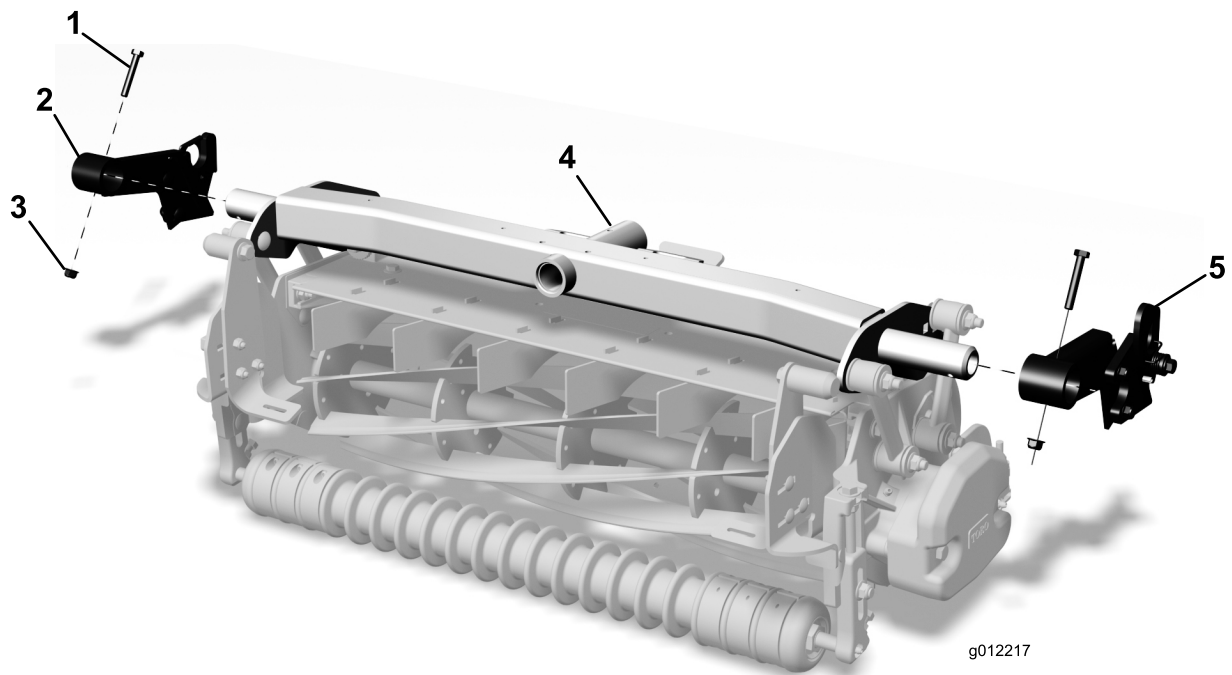
8. Align the holes in the basket bracket with the hole in the carrier frame tube and secure with a bolt (5/16 x 2-1/4 inch) and flange nut (5/16 inch) positioning as shown in Figure 5.

**Note:** The bolt must be threaded through the far wall of the tube.



**Figure 4**

- |                     |                         |                           |
|---------------------|-------------------------|---------------------------|
| 1. Carrier frame    | 3. Guide assembly       | 5. Flange nut (5/16 inch) |
| 2. Bracket assembly | 4. Bolt (5/16 x 1 inch) |                           |



**Figure 5**

- |                                    |                           |                                     |
|------------------------------------|---------------------------|-------------------------------------|
| 1. Bolt (5/16 x 2-1/4 inch)        | 3. Flange nut (5/16 inch) | 5. Left basket bracket with bracket |
| 2. Right basket bracket with guide | 4. Carrier frame          |                                     |

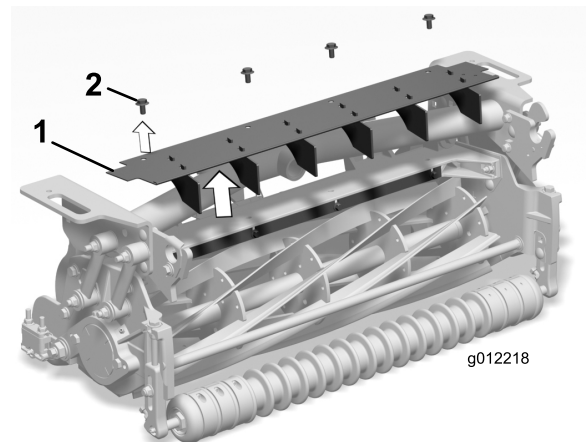
g012217

# 5

## Installing the Cut-off Bar

### Parts needed for this procedure:

1	Cut-off bar
4	Bolt (1/4 x 1-3/4 inches)
4	Locknut (1/4 inch)



**Figure 6**

### Procedure

- |  |                 |               |
|--|-----------------|---------------|
| 1. Remove the 4 flange-head bolts securing the front grass shield and deflectors to the cutting unit frame (Figure 6).             | 1. Grass shield | 2. Deflectors |
| 2. Remove the grass shield.  |                 |               |
| 3. Loosely mount the cut-off bar to the cutting unit frame with 4 bolts (1/4 x 1-3/4 inches) and 4 locknuts (1/4 inch) (Figure 7). |                 |               |

g012218

# 6

## Installing the New Grass Deflector (Front Cutting Units Only)

No Parts Required

### Procedure

1. Remove the 2 center deflectors and the deflector from each end of the shield, leaving only the 2 shown in [Figure 9](#).

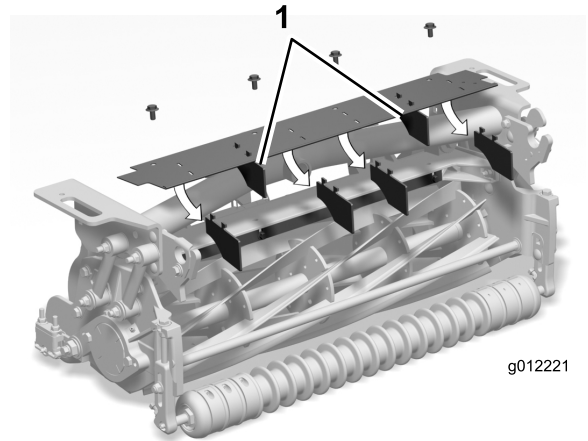


Figure 9

1. Do not remove these deflectors.
2. Mount the new deflector to the left end of the shield with 2 screws (10-24 x 1/2 inch) and nuts (10-24) as shown in [Figure 10](#).

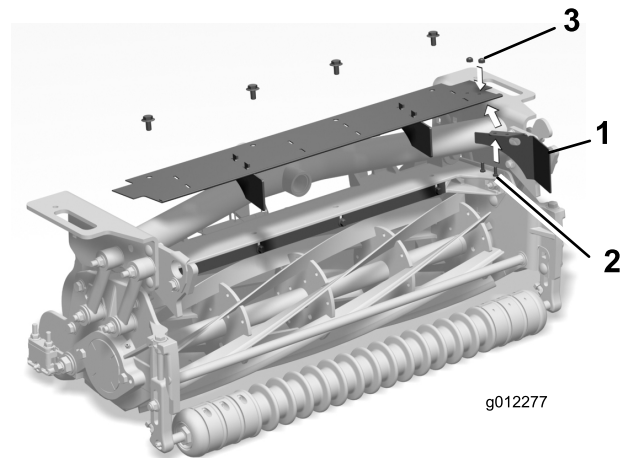


Figure 10

1. New deflector
2. Screw (10-24 x 1/2 inch)
3. Nut (10-24)

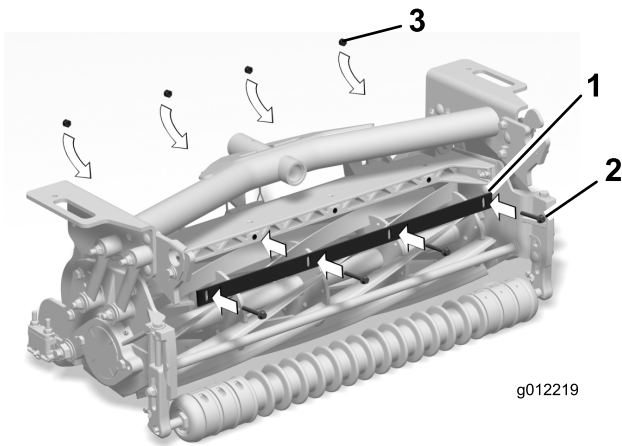


Figure 7

1. Cut-off bar
2. Bolt (1/4 x 1-3/4 inches)
3. Locknut (1/4 inch)

4. Insert a 1.5 mm (0.060 inch) feeler gauge between the top of the reel and the bottom of the cut-off bar to check clearance ([Figure 8](#)).

**Note:** Make sure the bar and reel are equal distance apart across the full length of the reel. The cut-off bar must not contact the reel during operation.

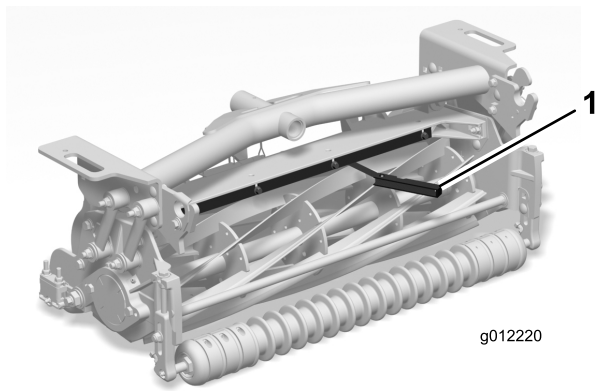


Figure 8

1. Feeler gauge

5. Tighten the bolts and locknuts ([Figure 7](#)).
6. Do not install the grass shield at this time.

3. Install the grass shield and remaining deflectors.

# 7

## Removing the Support Tube

### Parts needed for this procedure:

2	Flange locknut (3/8 inch)
---	---------------------------

### Procedure

1. Unthread the 2 flange-head bolts securing the support tube to the cutting unit side plates (Figure 11). Remove the support tube.
2. Secure the flange-head bolts to the cutting unit side plates with the 2 flange locknuts (3/8 inch) included (Figure 11).

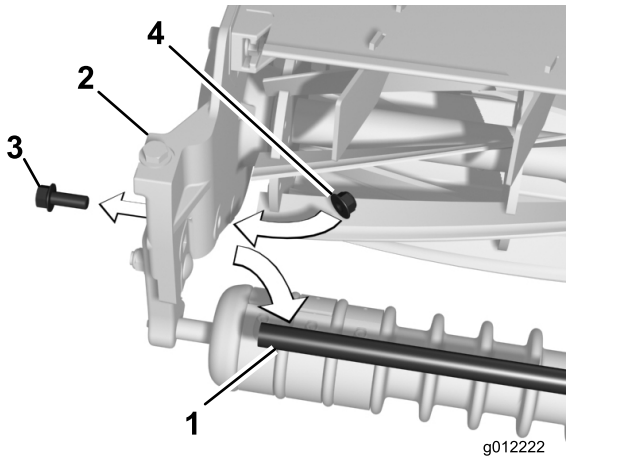


Figure 11

- |                 |                              |
|-----------------|------------------------------|
| 1. Support tube | 3. Flange-head bolt          |
| 2. Side plate   | 4. Flange locknut (3/8 inch) |

# 8

## Assembling the Rear Grass Basket

### No Parts Required

### Procedure

1. Remove the washers and nuts shipped on the strap bolts (Figure 12).

2. Using the cable ties on straps as handles, stretch each strap until it can be secured to top of basket with 2 washers and a locknut (Figure 12). Position a washer on each side of the basket top.

**Note:** Cut off the cable ties after the straps are installed.

**Note:** To ease the installation of straps, place an 8 inch x 4 inch wood block (Figure 12) inside the basket to raise and support the top of the basket.

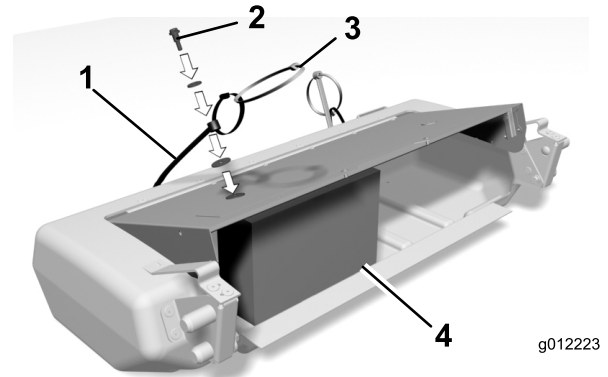


Figure 12

- |               |               |
|---------------|---------------|
| 1. Strap      | 3. Cable tie  |
| 2. Strap bolt | 4. Wood block |

**Note:** If the straps become stretched and do not hold top of basket open, use the guide holes (Figure 13) in the rear of the basket to locate and drill new mounting holes for the strap bolts.

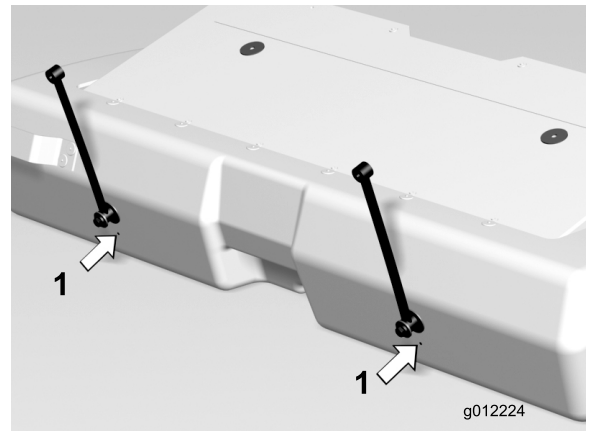


Figure 13

1. Guide hole (2)



# 9

## Mounting the Baskets to the Cutting Units

### Parts needed for this procedure:

3	Basket
---	--------

### Procedure

Mount a basket to each cutting unit carrier frame by inserting the basket mounting pin into the basket guide bracket and pressing the opposite mounting pin into the pivoting basket bracket (Figure 14).

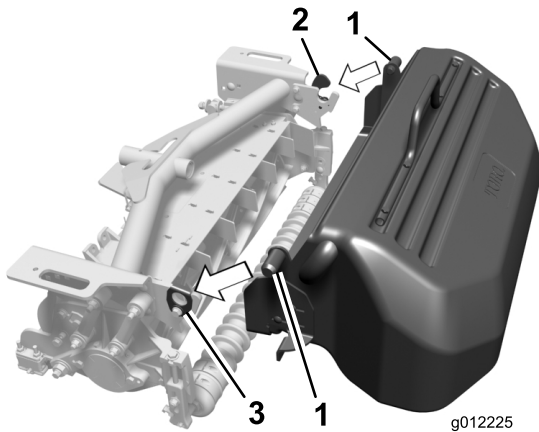


Figure 14

1. Basket mounting pin
2. Pivoting basket bracket
3. Basket guide bracket

- Position the basket so it is parallel to the cutting unit with a minimum clearance of 6 mm (0.250 inch) between the lip of the basket and the reel (Figure 15).
- On each end of the basket, adjust the basket stop brackets so they each contact a side plate.
- Tighten the carriage bolt nuts to secure the basket position.

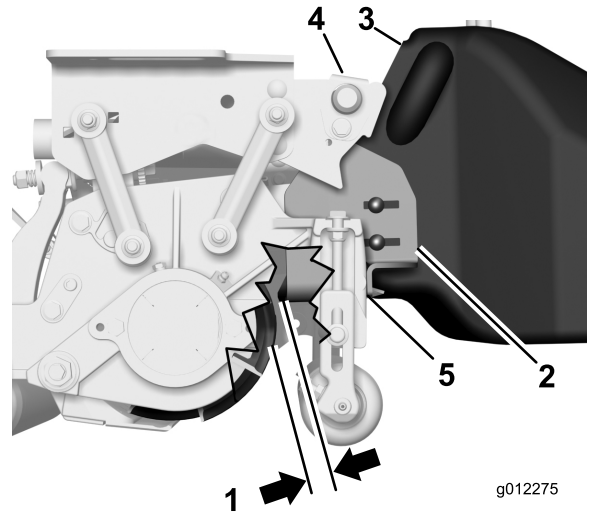


Figure 15

1. 6 mm (0.250 inch) clearance
2. Basket stop bracket
3. Basket
4. Carrier frame arm
5. Contact point

# 11

## Adjusting the Rear Basket Position

### No Parts Required

### Procedure

When the rear basket is installed on the cutting unit, the grass basket should be slightly raised in the rear.

When the cutting unit is raised, the roller bumper should always contact the wear strip on the top shield of the grass basket (Figure 16).

1. When installing the rear center cutting unit, ensure that the spacer on the lift arm pin is installed behind the cutting unit carrier frame as shown in Figure 16.

# 10

## Adjusting the Front Basket Position

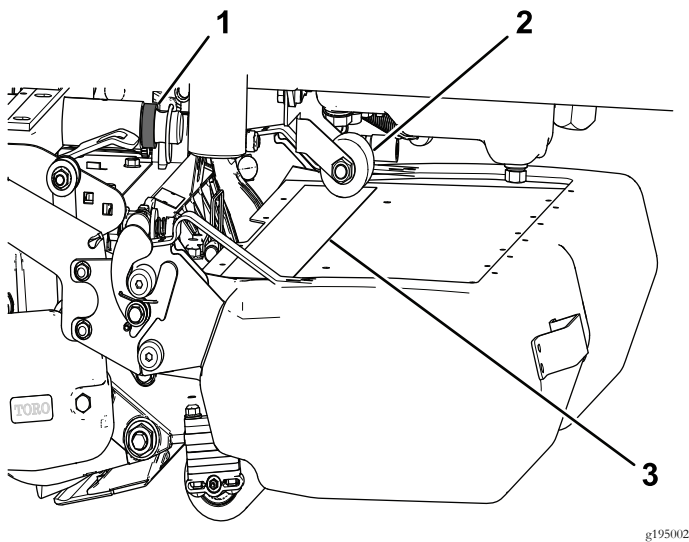
### No Parts Required

### Procedure

Make sure that the front baskets are parallel to the cutting units with a minimum clearance of 6 mm (0.250 inch) between the lip of the basket and the reel. If an adjustment to the basket position is required, proceed as follows:

- On each end of the basket, loosen the carriage bolt nuts securing the basket stop brackets to the basket (Figure 15).

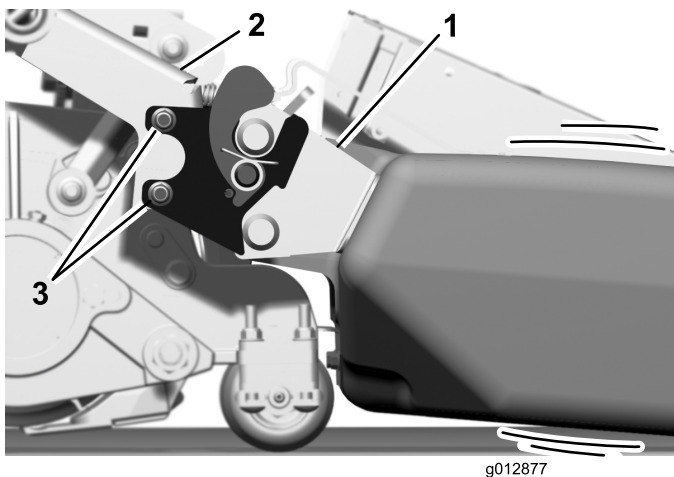




**Figure 16**

1. Spacer
2. Roller
3. Grass shield wear strip

2. Adjust the basket so that the rear of the basket is slightly raised, as follows:
  - A. On each end of the basket, loosen the carriage bolt nuts securing the guide and bracket assemblies to the basket brackets (Figure 17).
  - B. Tighten the carriage bolt nuts to secure the basket position.
  - C. Raise and lower the cutting units to ensure that the roller always contacts the wear strip.



**Figure 17**

1. Bracket assembly (left end of basket shown)
2. Basket bracket
3. Carriage bolt nuts (2)

- D. On a traction unit with the Sidewinder feature, also move the cutting units side to side and ensure that the roller always contacts the wear strip.
- E. If the roller does not contact the wear strip, raise the rear of the basket more.

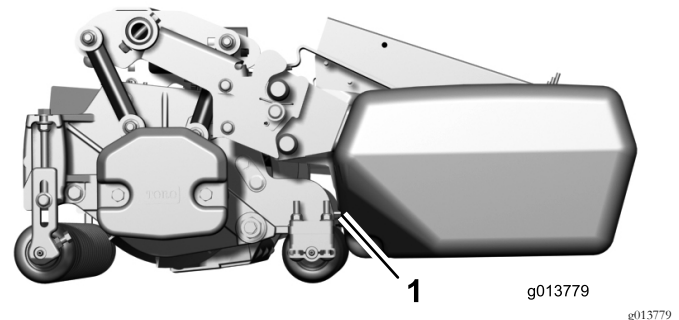
# 12

## Adjusting the Rear Basket Lip Bracket

**No Parts Required**

### Procedure

Check to make sure that the top of the rear basket lip bracket is flush to 6 mm (0.250 inches) with the roller (Figure 18). If the bracket is not flush with the roller, loosen the mounting cap screws and adjust the bracket as required.



**Figure 18**

1. Rear basket lip bracket

# 13

## Adjusting the Rear Grass Shield

**No Parts Required**

### Procedure

- Adjust the rear shield all the way up for wet conditions.
- In dry conditions, the rear shield may need to be slightly lowered to ensure that the clippings are thrown into the rear of the basket. Adjust it as required.

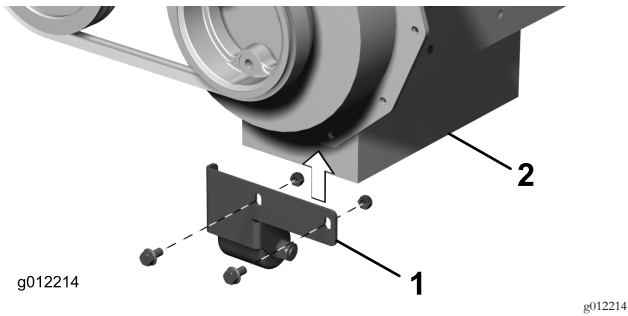
# 14

## Adjusting the Roller Bumper

No Parts Required

### Procedure

Adjust the roller bumper (Figure 19) so that the roller is parallel with the top shield on center basket on contact. If the basket is not parallel, the rear of the basket may contact the engine when it is raised.



**Figure 19**

1. Roller bumper

2. Engine

**Notes:**



**Count on it.**