



**Count on it.**

# Parts Catalog

## Road Light Kit including Brake Lights

### LT3340 Traction Unit

Model No. 02915—Serial No. 400000000 and Up



# Ordering Replacement Parts

To order replacement parts, please supply the part number, the quantity, and the description of each part desired.

## Understanding Reference Numbers

Each identified part in an illustration has a reference number. The reference number for a part also appears in the parts list, along with other information about the part.

This catalog uses two special reference number formats, one to indicate parts in a service assembly and another to indicate the quantity of a given part in an illustration.

## Service Assembly Reference Numbers

Parts in service assemblies have reference numbers in the form a:b. The a represents the reference number of the entire service assembly and the b represents a sequential number unique to each part within the service assembly.

For example, a wheel assembly might be identified by reference number 6, the tire by 6:1, the valve by 6:2, and the wheel by 6:3. When you order the assembly identified by reference number 6, you receive all parts identified by reference numbers 6:1, 6:2, and 6:3. However, you may also order any part individually. Reference numbers of this type appear in illustration and in parts lists.

## Reference Numbers Indicating Quantity

In an illustration, if a reference number indicates more than one part, the reference number has the form nX y. The n represents the quantity of the part, the X is the multiplication symbol, and the y represents the reference number.

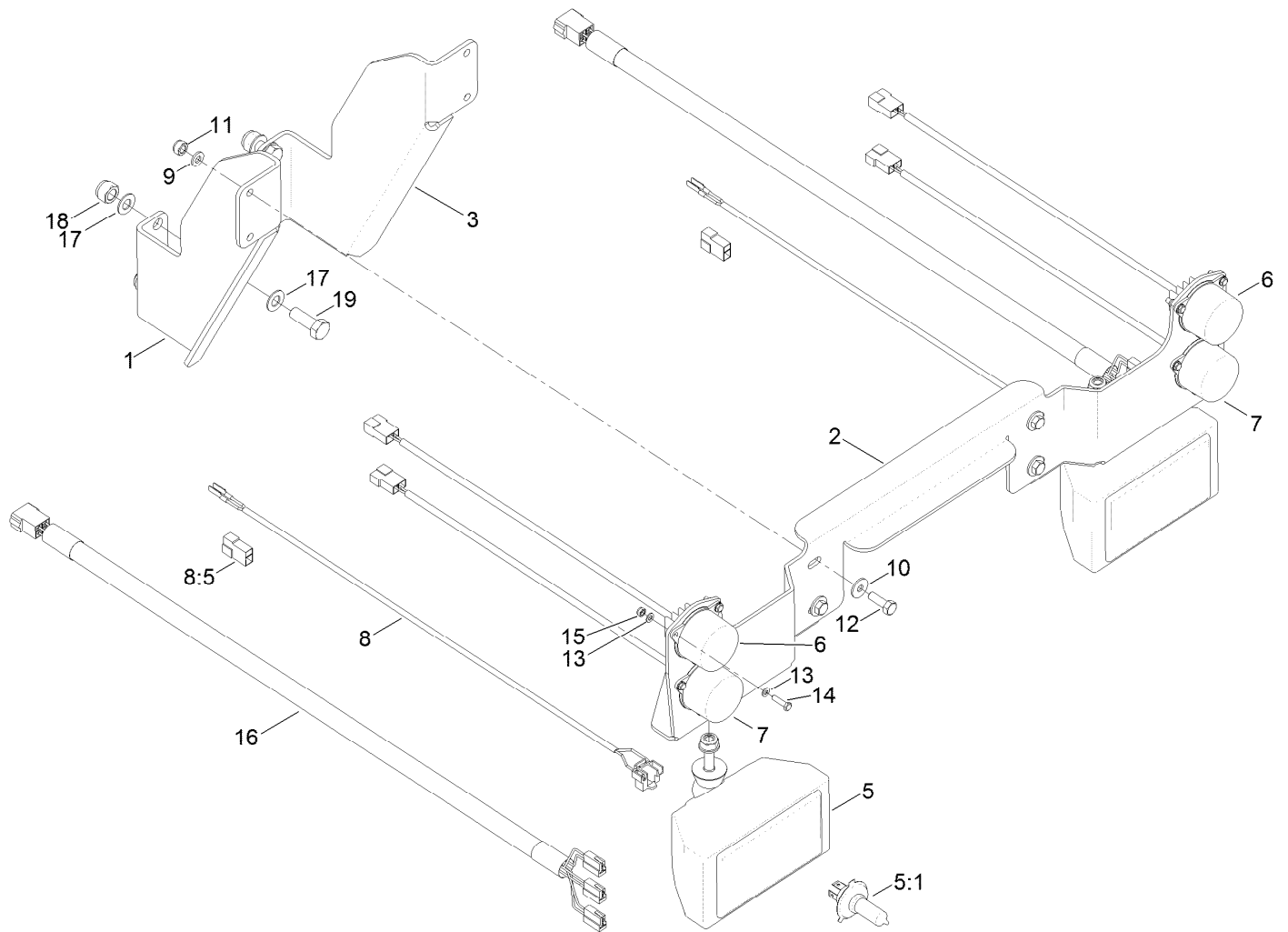
For example, in an illustration, the reference number 2X 37 means that two of the parts identified by reference number 37 are indicated.

# Contents

Front Light Assembly ..... 4

Rear Light Assembly ..... 6

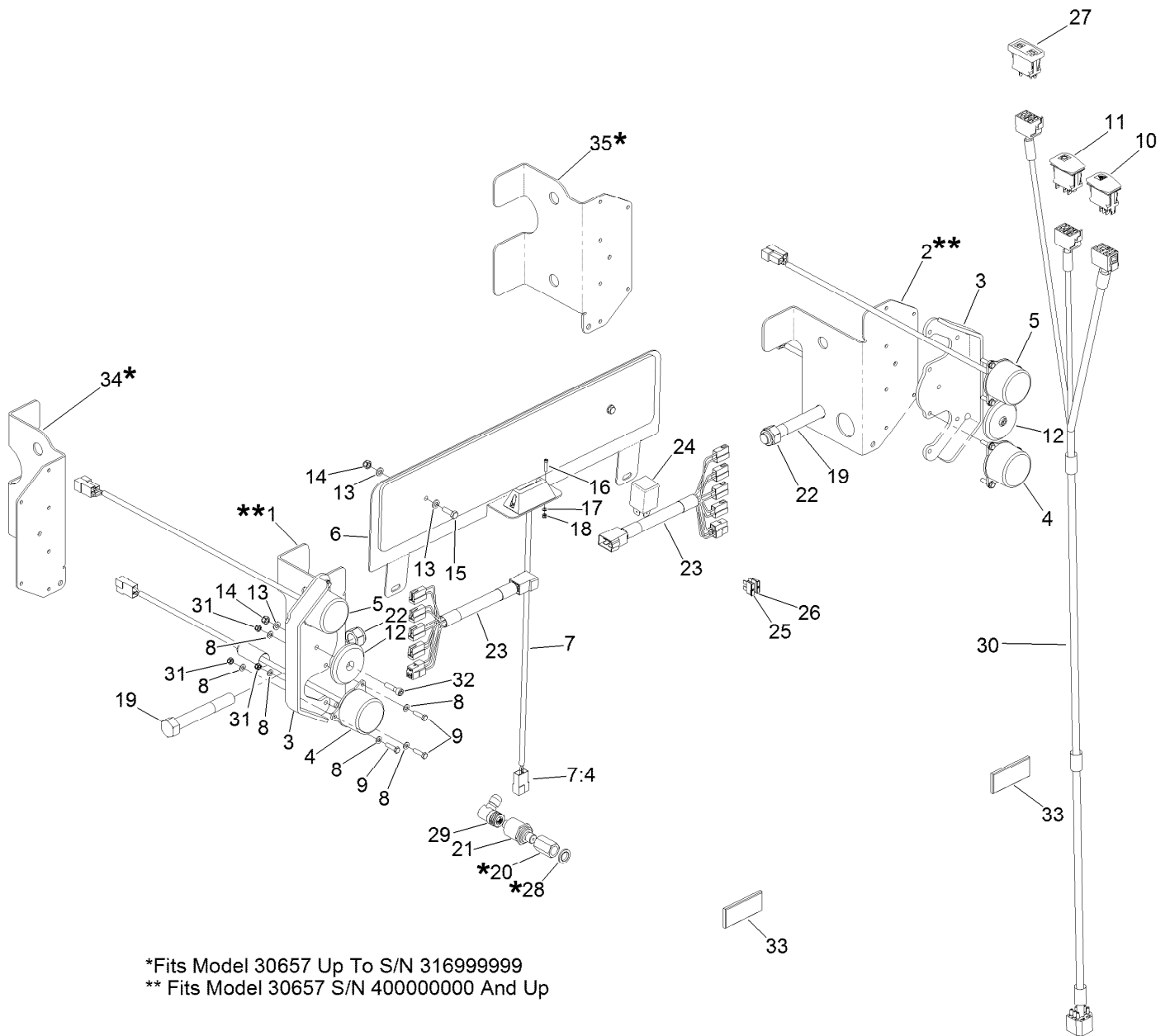
# Front Light Assembly



## Front Light Assembly (continued)

<i>Ref.</i>	<i>Part Number</i>	<i>Qty.</i>	<i>Description</i>	<i>Ref.</i>	<i>Part Number</i>	<i>Qty.</i>	<i>Description</i>
1	111-5060-03	1	Support-Lights, Front (Lt-Right)	9	ZWP1H000U	4	Washer-Plain
2	111-5059-03	1	Bracket-Lights, Front (Lt)	10	09267	4	Washer
3	111-5153-03	1	Support-Lights, Front (Lt-Left)	11	09441	4	Nut-Hex, NI
5	924633	2	Headlamp-Dip/Main	12	03162	4	Screw-HH
5:1	924632	1	Headlamp-Bulb	13	09470	24	Washer
6	111-6177	2	Indicator-Light, Front	14	ZDH1E020U	12	Screw-HH
7	111-6176	2	Light-Marker, Front	15	09430	12	Nut-Nyloc
8	111-8034	2	Cable-Headlamp	16	111-6174	2	Harness-Light, Front
8:5	111-6086	1	Housing	17	ZWP1L000U	8	Washer-Plain
				18	ZNN1L000U	4	Nut-Nyloc
				19	ZDH1L035U	4	Screw-HH

# Rear Light Assembly



\*Fits Model 30657 Up To S/N 316999999  
 \*\* Fits Model 30657 S/N 400000000 And Up

## Rear Light Assembly (continued)

<i>Ref.</i>	<i>Part Number</i>	<i>Qty.</i>	<i>Description</i>	<i>Ref.</i>	<i>Part Number</i>	<i>Qty.</i>	<i>Description</i>
1	111-9511-03	1	Bracket-Light, Rear	18	HY09698	2	Nut-Nyloc
2	111-9510-03	1	Bracket-Light, Rear	19	ZBH1P110U	2	Bolt
3	111-3710-03	2	Guard-Light	20	111-3765	1	Adaptor-Switch, Pressure
4	111-6180	2	Light-Indicator, Rear	21	111-3759	1	Switch-Pressure
5	111-6179	2	Light-Stop/Tail	22	09456	2	Nut
6	111-4710-03	1	Bracket-Plate, Number	23	111-6181	2	Connector-Lights, Rear
7	111-6178	1	Light-Plate, Number	24	111-3766	1	Relay-Flasher
7:4	111-6086	1	Housing ●	25	70-09-026	1	Fuse-10A
8	09470	24	Washer	26	70-09-151	1	Fuse-15A
9	ZDH1E020U	12	Screw-HH	27	111-2244	1	Switch-Indicator
10	111-2223	1	Switch-Warning, Hazard	28	10-06-030	1	Seal-Dowty
11	111-2252	1	Switch-Lights	29	111-3921	1	Connector-Switch, Pressure
12	111-3760	2	Reflector-Red	30	111-3893	1	Lead-Connector
13	09472	6	Washer-Plain	31	09430	12	Nut-Nyloc
14	09438	4	Nut-Nyloc	32	ZCS1F025U	2	Screw
15	09363	2	Screw-HH	33	111-5020	2	Reflector-Adhesive
16	111-3764	2	Setscrew	34	111-4765-03	1	Bracket-Light, Left
17	HY09697	2	Washer-Plain	35	111-3119-03	1	Bracket-Light, Right

● Not illustrated



**Count on it.**