



Form No. 3412-363 Rev A

**Count on it.**

# Operator's Manual

## Snowthrower Compact Tool Carrier

Model No. 22456—Serial No. 315000001 and Up



This product complies with all relevant European directives. For details, please see the Declaration of Incorporation (DOI) at the back of this publication.



g000502

Figure 1

1. Safety-alert symbol

This manual uses 2 words to highlight information. **Important** calls attention to special mechanical information and **Note** emphasizes general information worthy of special attention.

**WARNING**

**CALIFORNIA**  
**Proposition 65 Warning**  
**This product contains a chemical or chemicals known to the State of California to cause cancer, birth defects, or reproductive harm.**

Introduction

This snowthrower is intended to be used on a Toro compact tool carrier. It is designed primarily for removing snow from paved surfaces, such as driveways and sidewalks, and other surfaces for traffic on residential or commercial properties. It is not designed for removing materials other than snow, nor is it a model with a pivoting scraper designed for clearing off gravel surfaces. It is not designed for use on non-Toro traction units.

Read this information carefully to learn how to operate and maintain your product properly and to avoid injury and product damage. You are responsible for operating the product properly and safely.

You may contact Toro directly at [www.Toro.com](http://www.Toro.com) for product safety and operation training materials, accessory information, help finding a dealer, or to register your product.

Whenever you need service, genuine Toro parts, or additional information, contact an Authorized Service Dealer or Toro Customer Service and have the model and serial numbers of your product ready. The model and serial numbers are printed on a plate located on the right side of the drive head. Write the numbers in the space provided.

Model No. \_\_\_\_\_

Serial No. \_\_\_\_\_

This manual identifies potential hazards and has safety messages identified by the safety-alert symbol (Figure 1), which signals a hazard that may cause serious injury or death if you do not follow the recommended precautions.

Contents

Safety ..... 3

    General Snowthrower Safety ..... 3

    Toro Snowthrower Safety ..... 4

    Stability Ratings..... 4

    Safety and Instructional Decals ..... 5

Setup ..... 6

    1 Preparing the Machine..... 7

    2 Installing the Discharge Chute ..... 7

    3 Installing the Cable Guide ..... 8

    4 Installing the Snowthrower..... 8

Product Overview .....11

    Specifications .....11

    Attachments/Accessories.....11

Operation .....12

    Removing the Snowthrower.....12

    Operating Tips .....12

Maintenance .....13

    Recommended Maintenance Schedule(s) .....13

    Checking/Adjusting the Discharge Chute .....13

    Checking the Auger-Gearbox Oil.....13

    Replacing the Scraper Blade .....14

    Adjusting the Skids .....14

Storage .....15

Troubleshooting .....16

# Safety

Improper use or maintenance by the operator or owner can result in injury. To reduce the potential for injury, comply with these safety instructions and those in the traction unit *Operator's Manual*. Always pay attention to the safety alert symbol, which means *Caution*, *Warning*, or *Danger*—personal safety instruction. Failure to comply with the instruction may result in personal injury or death.

## ⚠ DANGER

When the snowthrower is in operation, the impeller and auger can be rotating and cut off or injure hands and feet.

- Before adjusting, cleaning, repairing and inspecting the snowthrower, and before unclogging the discharge chute, *move the auxiliary hydraulics lever to the OFF position, shut off the engine, and wait for all moving parts to stop*. Remove the key.
- Use a stick, *not your hands*, to remove an obstruction from the discharge chute.
- Stay behind the handles and away from the discharge opening while operating the snowthrower.
- Keep your face, hands, feet, and any other part of your body or clothing away from concealed, moving, or rotating parts.

## ⚠ WARNING

The auger/impeller may pick up and throw stones, toys, and other foreign objects, causing serious personal injury to you or to bystanders.

- Keep the area of operation free of all objects that could be picked up and thrown by the auger/impeller.
- Keep the area of operation clear of all persons, particularly small children.

## ⚠ WARNING

When the engine is off, attachments in the raised position can gradually lower. Someone nearby may be pinned or injured by the attachment as it lowers.

Always lower the attachment lift each time you shut off the traction unit.

## ⚠ WARNING

If you do not fully seat the attachment-locking pins in the attachment-mount plate holes, the attachment could fall off the traction unit and severely injure you or bystanders.

- Ensure that you fully seat the attachment-locking pins through the holes in the attachment-mount plate before lifting the attachment.
- Ensure that the attachment-mount plate is free of any dirt or debris that may hinder the connection of the attachment to the traction unit.
- Refer to your traction unit *Operator's Manual* for detailed information on safely connecting an attachment to your traction unit.

## ⚠ CAUTION

Hydraulic couplers, hydraulic lines/valves, and hydraulic fluid may be hot and can burn you if you touch them.

- Wear gloves when operating the hydraulic couplers.
- Allow the traction unit to cool before touching hydraulic components.
- Do not touch hydraulic fluid spills.

## General Snowthrower Safety

The following instructions have been adapted from the ANSI/OPEI and ISO standards.

### Training

- Read, understand, and follow all instructions on the machine and in the manual(s) before operating this machine. Be thoroughly familiar with the controls and the proper use of the machine. Know how to stop the machine and disengage the controls quickly.
- Never allow children to operate the machine. Never allow adults to operate the machine without proper instruction.
- Keep the area of operation clear of all persons, particularly small children.
- Exercise caution to avoid slipping or falling.

### Preparation

- Thoroughly inspect the area where the machine is to be used and remove all doormats, sleds, boards, wires, and other foreign objects.
- Do not operate the machine without wearing adequate winter garments. Avoid loose fitting clothing that can get caught in moving parts. Wear slip-resistant, substantial

footwear and eye protection. Tie back long hair. Do not wear jewelry.

- Never attempt to make any adjustments while the engine is running (except when specifically recommended by manufacturer).
- Let the engine and machine adjust to outdoor temperatures before starting to clear the snow.

## Maintenance and Storage

- Check fasteners at frequent intervals for proper tightness to be sure the equipment is in safe working condition.
- Never store the machine with fuel in the fuel tank inside a building where ignition sources are present, such as hot water heaters, space heaters, or clothes dryers. Allow the engine to cool before storing in any enclosure.
- Always refer to the *Operator's Manual* for important details if the snowthrower is to be stored for an extended period.
- Maintain or replace safety and instruction labels, as necessary.
- Run the machine a few minutes after throwing snow to prevent freeze-up of the auger/impeller.

## Toro Snowthrower Safety

The following list contains safety information specific to Toro products or other safety information that you must know that is not included in the ANSI or ISO standards.

- The rotating auger/impeller or rotor blades can cut off or injure fingers or hands. Stay in the operator's position and away from the discharge opening while operating the snowthrower. Keep your face, hands, feet, and any other part of your body or clothing away from concealed, moving, or rotating parts.
- Before leaving the operator's position, adjusting, cleaning, repairing, and inspecting the snowthrower, and before unclogging the discharge chute, stop the engine, remove the key, and wait for all moving parts to stop. Also, cycle the auxiliary hydraulics lever and disconnect the hydraulic lines.
- Use a stick, not your hands to remove obstructions from the discharge chute.
- Before leaving the operator's position, stop the engine, remove the key, and wait for all moving parts to stop.
- If a shield, safety device, or decal is damaged, illegible, or lost, repair or replace it before beginning operation. Also, tighten any loose fasteners.
- Do not use the snowthrower on a roof.
- Perform only those maintenance instructions described in this manual. Before performing any maintenance, service, or adjustment, stop the engine, remove the key, cycle the auxiliary hydraulics lever, and disconnect the hydraulic lines. If major repairs are ever needed, contact your Authorized Toro Service Dealer.

- To ensure the best performance and safety, purchase only genuine Toro replacement parts and accessories to keep the Toro all Toro. Do not use replacement parts and accessories as they could cause a safety hazard.
- When using the snowthrower in a raised position, stay away from overhead power lines and drive the traction unit only on level surfaces.
- Always transport the snowthrower in a lowered position.
- Use the snowthrower only to remove snow. Other materials may damage the snowthrower and cause a hazard.
- Do not tilt the snowthrower so that it discharges toward the operator or bystanders.

## Stability Ratings



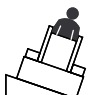
To determine the degree of slope you can traverse with the attachment installed on a traction unit, find the stability rating for the hill position you want to travel in the appropriate table below, then find the degree of slope for the same rating and hill position in the Stability Data section of the traction unit *Operator's Manual*.

### ⚠ WARNING

**Exceeding the maximum recommended slope can cause the traction unit to tip, crushing you or bystanders.**

**Do not drive the traction unit on a slope steeper than the maximum recommended slope, as determined in the following tables and the traction unit *Operator's Manual*.**

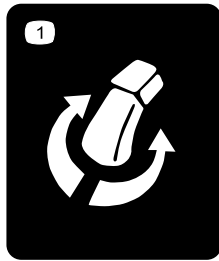
**Important:** If you have a traction unit other than the TX, the snowthrower is rated for use without the counterweight. If you use the counterweight with the snowthrower, the traction unit will be less stable in the front and side uphill positions.

Orientation	Stability Rating
<b>Front Uphill</b> 	<b>C</b>
<b>Rear Uphill</b> 	<b>C</b>
<b>Side Uphill</b> 	<b>B</b>

# Safety and Instructional Decals



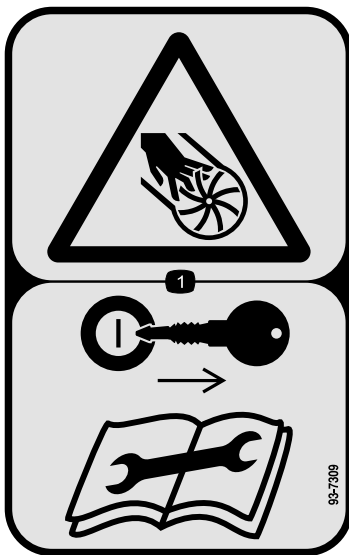
Safety decals and instructions are easily visible to the operator and are located near any area of potential danger. Replace any decal that is damaged or missing.



**63-3510**

decal63-3510

1. Discharge-chute rotation



**93-7309**

decal93-7309

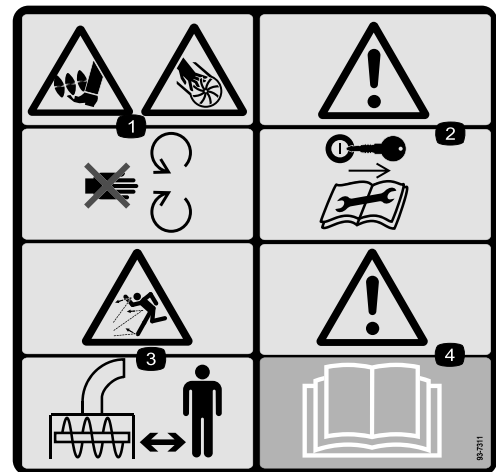
1. Cutting/dismemberment hazard, impeller—remove the ignition key and read the instructions before servicing or performing maintenance.



**93-7310**

decal93-7310

1. Cutting/dismemberment hazard, auger—keep bystanders away from the machine.



**93-7311**

decal93-7311

1. Cutting/dismemberment hazard, auger/impeller—stay away from moving parts.
2. Warning—remove the ignition key and read the instructions before servicing or performing maintenance.
3. Thrown object hazard—keep bystanders away from the machine.
4. Warning—read the *Operator's Manual*.

# Setup

## Loose Parts

Use the chart below to verify that all parts have been shipped.

Procedure	Description	Qty.	Use
<b>1</b>	No parts required	–	Prepare the machine.
<b>2</b>	Snowthrower housing Discharge-chute assembly Deflector shield Carriage bolt Washer Locknut	1 1 1 3 3 3	Install the discharge chute.
<b>3</b>	Cable guide (200/300 series only) Cable guide (TX 1000 series only)	1 1	Install the cable guide.
<b>4</b>	Chute-control bracket (200/300 and TX 400/500 series only) Chute-control bracket (TX 1000 only) Knob (200/300 series and TX 400/500 series only) Handle clamp (200/300 series only) Washer, large (200/300 series only) Washer, small (200/300 series only) Mounting bracket (TX 400/500 series only) Self-tapping screws (5/16 x 3/4 inch) (TX 400/500 series only) Retaining plate (TX 400/500 series only)	1 1 2 1 1 1 1 2 1	Install the snowthrower.

# 1

## Preparing the Machine

### No Parts Required

### Procedure

1. Park the machine on a level surface.
2. Engage the parking brake.
3. Lower the loader arms.
4. Shut off the engine and remove the key.

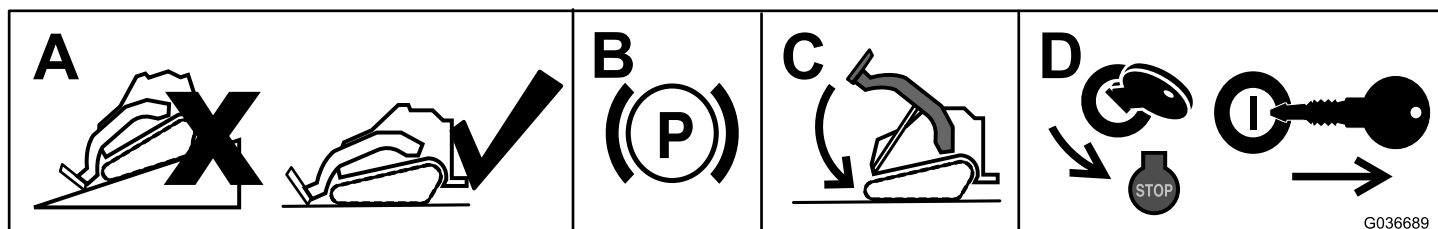


Figure 2

# 2

## Installing the Discharge Chute

### Parts needed for this procedure:

1	Snowthrower housing
1	Discharge-chute assembly
1	Deflector shield
3	Carriage bolt
3	Washer
3	Locknut

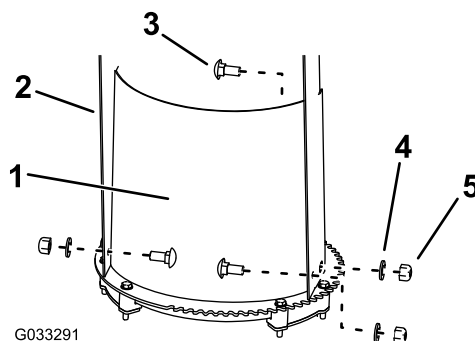


Figure 3

1. Deflector shield
2. Discharge chute
3. Carriage bolt
4. Washer
5. Locknut

### Procedure

Install the deflector shield and the discharge-chute assembly onto the snowthrower housing with 3 carriage bolts (heads to inside), 3 washers, and 3 locknuts (Figure 3).

# 3

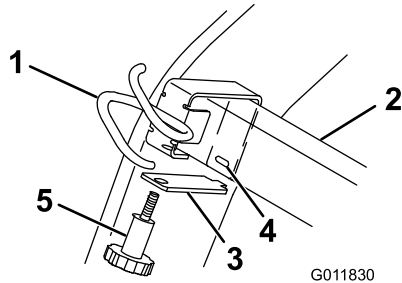
## Installing the Cable Guide

### Parts needed for this procedure:

1	Cable guide (200/300 series only)
1	Cable guide (TX 1000 series only)

### 200/300 Series Traction Units Only

1. If your traction unit has a bolt installed in the underside of the loader-arm cross bar, between the right loader arm and the hydraulic hoses, remove the bolt.
2. Place the cable guide over the loader-arm crossbar on the far right side (Figure 4).



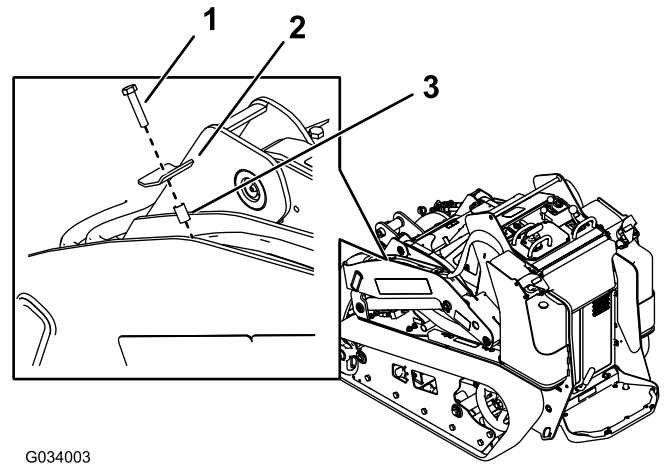
**Figure 4**

- |                        |         |
|------------------------|---------|
| 1. Cable guide         | 4. Slot |
| 2. Loader-arm crossbar | 5. Knob |
| 3. Clamp               |         |

3. Insert the clamp into the slot in the cable guide, then secure it with a knob (Figure 4).

### TX 1000 Traction Unit Only

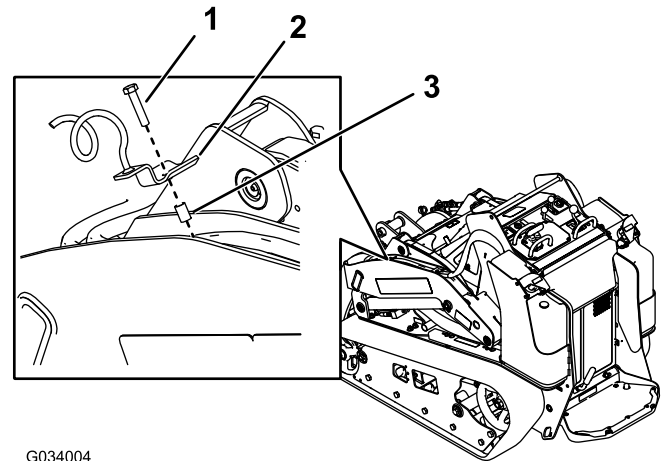
1. Remove the front, left hose-hold-down plate (Figure 5).



**Figure 5**

- |                         |           |
|-------------------------|-----------|
| 1. Bolt                 | 3. Spacer |
| 2. Hose-hold-down plate |           |

2. Use the bolt and spacer from the hold-down plate to install the cable guide (Figure 6).



**Figure 6**

- |                        |           |
|------------------------|-----------|
| 1. Bolt                | 3. Spacer |
| 2. Hose holddown plate |           |



# 4

## Installing the Snowthrower

### Parts needed for this procedure:

1	Chute-control bracket (200/300 and TX 400/500 series only)
1	Chute-control bracket (TX 1000 only)
2	Knob (200/300 series and TX 400/500 series only)
1	Handle clamp (200/300 series only)
1	Washer, large (200/300 series only)
1	Washer, small (200/300 series only)
1	Mounting bracket (TX 400/500 series only)
2	Self-tapping screws (5/16 x 3/4 inch) (TX 400/500 series only)
1	Retaining plate (TX 400/500 series only)

### 200/300 Series Traction Units Only

**Note:** Use the chute-control bracket with the preinstalled handle.

1. Connect the snowthrower to the traction-unit mount plate and connect the hydraulic lines.

**Note:** Refer to your traction unit *Operator's Manual* for instructions.

2. Locate the hole in the side plate of the traction-unit frame that is located just behind and to the left of the left handle (Figure 7).

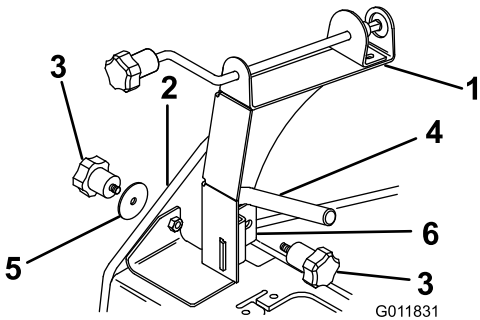


Figure 7

- |                          |                 |
|--------------------------|-----------------|
| 1. Chute-control bracket | 4. Left handle  |
| 2. Upper left side plate | 5. Large washer |
| 3. Knob                  | 6. Handle clamp |

If there is no hole, complete the following:

- A. Copy the template at the back of the book, cut out the template, and align it with the upper left side plate of the traction unit.

**Note:** The arrow on the template should point up.

**Note:** The template is designed to fit on the outside of the side plate.

- B. Mark the hole location on the side plate at the center of the cross hairs on the template.
  - C. Drill a 1.0 to 1.3 cm (3/8 to 1/2 inch) hole through the frame at the marked location.
3. Place the chute-control bracket between the left handle and the side plate (Figure 7).
  4. Secure the bracket to the frame with a knob and the large washer (Figure 7).
  5. Insert the handle clamp into the slot in the chute-control bracket, wrapping it around the handle, then secure it with a knob (Figure 7).
  6. Route the chute-control cable through the cable guide.

### TX 400/500 Series Traction Units Only

**Note:** Use the chute-control bracket with the preinstalled handle.

1. Connect the snowthrower to the traction-unit mount plate and connect the hydraulic lines.

**Note:** Refer to your traction unit *Operator's Manual* for instructions.

2. Align the bracket assembly on the left side of the traction unit as illustrated in Figure 8.

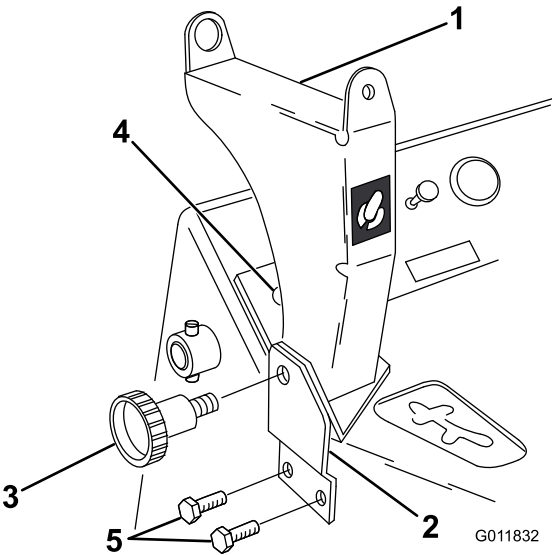
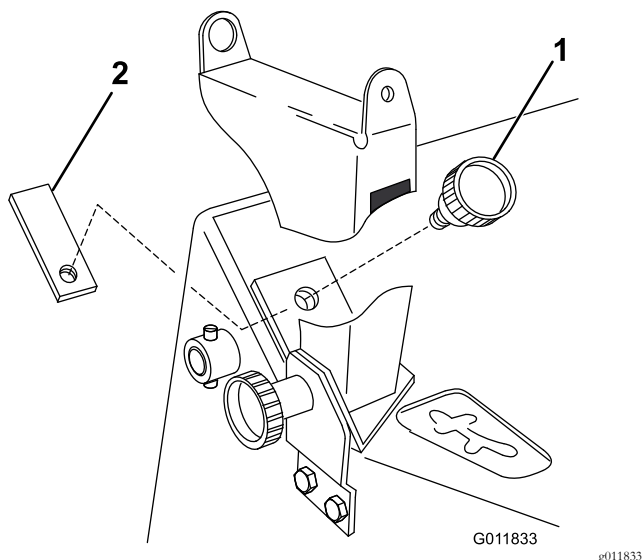


Figure 8

- |                          |   |
|--------------------------|---|
| 1. Chute-control bracket | 4. Location for hole (3/8 inch) through the control panel.  |
| 2. Mounting bracket      | 5. Self-tapping screws (5/16 x 3/4 inch) and location of the 2 holes (0.290 inch) through the frame |
| 3. Knob                  |   |

3. Mark the hole locations on the traction unit for the 2 mounting bracket holes and for the hole in the control bracket on the control panel (Figure 8).
4. Using an 0.290 inch (size L) drill bit, drill the holes for the mounting bracket through the traction-unit frame (Figure 8).
5. Using a 3/8 inch drill bit, drill the hole for the control bracket in the control panel (Figure 8).
6. Install the mounting bracket with the 2 self-tapping screws (5/16 x 3/4 inch) (Figure 8).
7. Secure the control bracket to the control panel using the other knob and the retaining plate (Figure 9).

**Note:** Insert the retaining plate from behind the control panel.

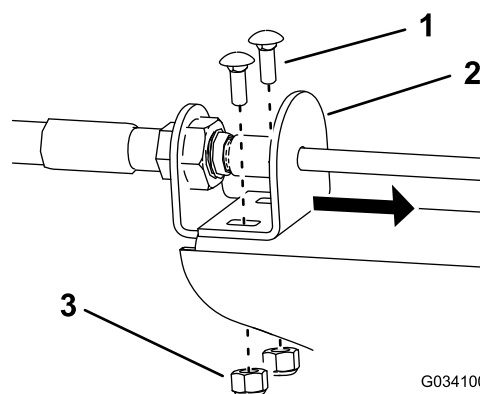


**Figure 9**

1. Knob
2. Retaining plate

## TX 1000 Traction Unit Only

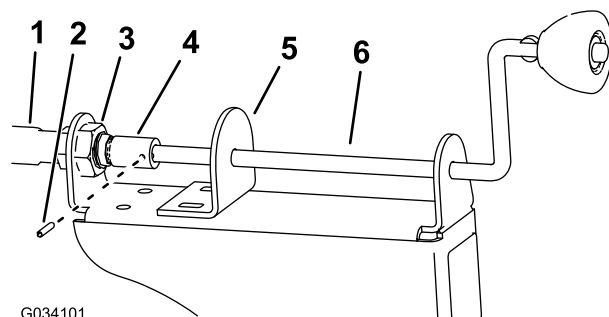
1. Remove the 2 carriage bolts and 2 nuts from the chute-control bracket that is used for the 200/300 and TX 400/500 series traction units (Figure 10).



**Figure 10**

1. Carriage bolt
2. L-bracket
3. Nut

2. Slide the L-bracket back (Figure 10).
3. Remove the roll pin (Figure 11).



**Figure 11**

1. Cable
2. Roll pin
3. Nut
4. Coupler
5. L-bracket
6. Handle rod

4. Remove the handle rod, L-bracket, and coupler (Figure 11).
5. Loosen the nut and pull the cable from the bracket (Figure 11).
6. Use the nut to install the cable to the chute-control bracket for the TX 1000 (Figure 11).
7. Install the handle rod, L-bracket, and coupler (Figure 11).
8. Install the roll pin (Figure 11).
9. Slide the L-bracket forward and install the 2 carriage bolts and 2 nuts (Figure 10).
10. Connect the snowthrower to the traction-unit mount plate and connect the hydraulic lines.

**Note:** Refer to your traction unit *Operator's Manual* for instructions.

- 11. Remove the 2 bolts and 2 nuts from the left fuel-tank lock plate and use them to install the chute-control bracket (Figure 12).

**Note:** Install the middle tab of the bracket between the fuel tank and the fuel-tank bracket.

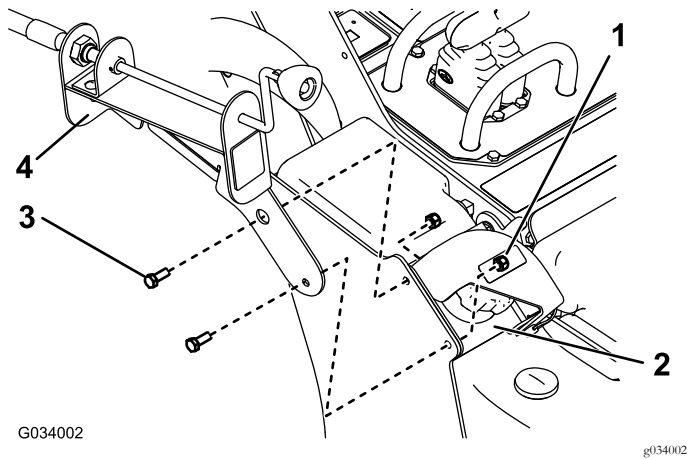


Figure 12

1. Nut

2. Lock plate
3. Bolt

4. Chute-control bracket

- 12. Route the chute-control cable through the cable guide.

# Product Overview

## Specifications

**Note:** Specifications and design are subject to change without notice.

Width	121.3 cm (47-3/4 inches)
Clearing width	111.7 cm (44 inches)
Length	109.7 cm (43-1/4 inches)
Height	128 cm (50-7/16 inches)
Weight	152 kg (335 lb)

## Attachments/Accessories

A selection of Toro approved attachments and accessories is available for use with the machine to enhance and expand its capabilities. Contact your Authorized Service Dealer or Distributor or go to [www.Toro.com](http://www.Toro.com) for a list of all approved attachments and accessories.

# Operation

## ⚠ DANGER

When the snowthrower is in operation, the impeller and auger can be rotating and cut off or injure hands and feet.

- Before adjusting, cleaning, repairing and inspecting the snowthrower, and before unclogging the discharge chute, *cycle the auxiliary hydraulics lever, move to the OFF position, shut off the engine, and wait for all moving parts to stop. Remove the key.*
- Use a stick, *not your hands*, to remove an obstruction from the discharge chute.
- Stay behind the handles and away from the discharge opening while operating the snowthrower.
- Keep face, hands, feet, and any other part of your body or clothing away from concealed, moving, or rotating parts.

Refer to your traction unit *Operator's Manual* for more information on installing and removing attachments on your traction unit.

**Important:** Always use the traction unit to lift and move the attachment.

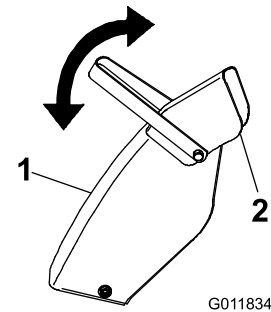
## Removing the Snowthrower

**Note:** To install the snowthrower, refer to [4 Installing the Snowthrower \(page 8\)](#).

1. Start the engine and lower the attachment to the ground or onto a trailer, then shut off the engine.
2. Remove the chute-control bracket as follows:
  - On 200/300 and TX 1000 series traction units, remove the knobs, washer, and handle clamp from the chute-control bracket and remove the bracket.
  - On TX series traction units, remove the knobs and retaining plate from the chute-control bracket and remove the bracket.
3. Install the fastening hardware on the chute-control bracket for safe keeping.
4. On 200/300 series traction units, remove the chute-control cable from the cable guide.
5. Disconnect the hydraulic lines and remove the snowthrower from the mount plate. Refer to the *Operator's Manual* for your traction unit for instructions.

## Operating Tips

- Always use full throttle (maximum engine speed).
- If your traction unit has a speed selector, use the slow position (turtle).
- If your traction unit has a flow divider, set it as appropriate for the snow conditions (i.e., vary the setting from 10 o'clock for heavy snow to 12 o'clock for lighter snow).
- The discharge chute can be rotated 180° side to side. The direction is controlled by turning the chute-control crank in the chute-control bracket.
- The chute deflector, on top of the discharge chute, can be moved up and down to control the height and distance snow is thrown ([Figure 13](#)).



**Figure 13**

1. Discharge chute
2. Chute deflector

- Remove snow as soon as possible after it falls. This produces the best snow removal results.
- Adjust the skids to match the type of surface being cleaned; refer to [Adjusting the Skids \(page 14\)](#).
- The snowthrower is designed to clean snow down to the contact surface, but there are times when the front of the snowthrower may tend to ride up. If this happens, reduce the forward speed.
- Discharge snow downwind whenever possible and overlap each pass to ensure complete snow removal. If wheels slip, reduce the forward speed.
- Run the snowthrower for a few minutes after clearing snow so moving parts do not freeze.
- Do not overload the snowthrower by clearing snow at too fast a rate. If the engine slows down, reduce the forward speed or adjust the flow divider (where applicable) to supply more power to the snowthrower.
- In some snow and cold weather conditions, some controls and moving parts may freeze. Therefore, when any control becomes hard to operate, shut off the machine and wait for all moving parts to stop; then check all parts for freeze up. **Do not use excessive force when trying to operate frozen controls.** Free all controls and moving parts before operating.

# Maintenance

## Recommended Maintenance Schedule(s)

Maintenance Service Interval	Maintenance Procedure
Every 25 hours	<ul style="list-style-type: none"><li>• Check/adjust the discharge chute.</li></ul>
Every 50 hours	<ul style="list-style-type: none"><li>• Check the auger-gearbox oil.</li></ul>
Every 100 hours	<ul style="list-style-type: none"><li>• Check the condition of the scraper blade.</li></ul>
Before storage	<ul style="list-style-type: none"><li>• Paint chipped surfaces.</li></ul>
Yearly or before storage	<ul style="list-style-type: none"><li>• Check/adjust the discharge chute.</li><li>• Check the auger-gearbox oil.</li><li>• Check the condition of the scraper blade.</li><li>• Adjust the skids as required.</li></ul>

### ⚠ CAUTION

If you leave the key in the traction unit ignition switch while the snowthrower is attached, someone could accidentally start the engine and seriously injure you or other bystanders.

Remove the key from the ignition and disconnect the wire(s) from the spark plug(s) before you do any maintenance, requiring that the snowthrower be attached to the traction unit. Set the wire(s) aside so that it does not accidentally contact the spark plug(s).

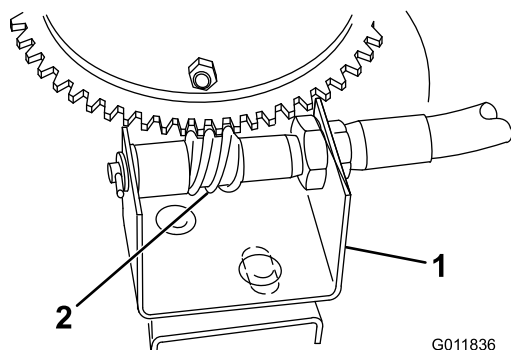
## Checking/Adjusting the Discharge Chute

**Service Interval:** Every 25 hours

Yearly or before storage

Ensure that the chute rotates smoothly when you turn the chute-control crank. If it does not rotate smoothly, adjust the worm gear as follows:

1. Loosen the worm-bracket mounting screws (Figure 14), firmly pushing the worm gear against the teeth in the retaining ring.



**Figure 14**

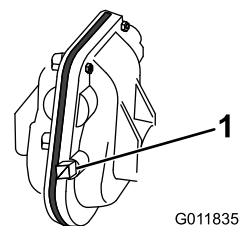
1. Worm bracket
2. Worm gear

## Checking the Auger-Gearbox Oil

**Service Interval:** Every 50 hours

Yearly or before storage

1. Lower the snowthrower on a level surface.
2. Remove the pipe plug from the auger-gearbox by placing the open end of a drive socket extension (3/8 inch) over the plug and using open-end wrench (3/8 inch) on the square end of the extension (Figure 15).



**Figure 15**

1. Pipe plug

3. Check the level of oil in the gearbox. The oil must be at the point of overflowing in the filler opening.
4. If the oil level is low, add SAE 90 EP GL-4 transmission oil to the gearbox.
5. Install the pipe plug in the gearbox.

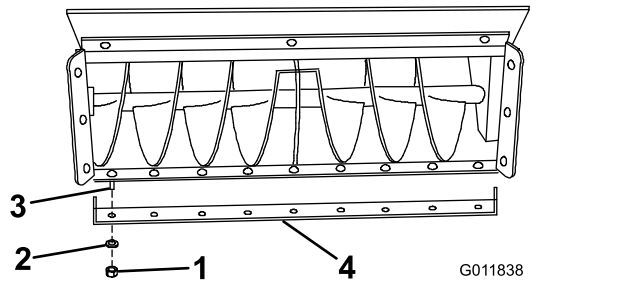
## Replacing the Scraper Blade

**Service Interval:** Every 100 hours—Check the condition of the scraper blade.

Yearly or before storage—Check the condition of the scraper blade.

The scraper blade contacts the ground, preventing damage to the snowthrower housing. Periodically inspect the scraper blade for wear. When the scraper becomes worn, before the working surface contacts the housing, replace the scraper blade.

1. Raise the snowthrower off the ground 30 cm (12 inches) and shut off the engine.
2. Remove the nuts, washers, carriage bolts, and scraper blade (Figure 16).



**Figure 16**

- |           |                  |
|-----------|------------------|
| 1. Nut    | 3. Carriage bolt |
| 2. Washer | 4. Scraper blade |

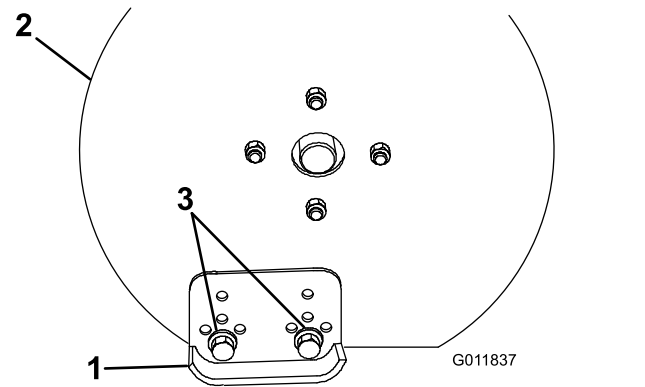
3. Replace the scraper blade and secure the new blade with the previously removed hardware (Figure 16).

## Adjusting the Skids

**Service Interval:** Yearly or before storage

The distance between the scraper blade and the ground is controlled by skids on each side of the housing. The height can be adjusted so that the scraper blade does not catch on uneven surfaces

1. Lower the snowthrower until it is 2.5 to 5 cm (1 to 2 inches) above a level surface, then shut off the engine.
2. Remove the nuts, washers, and bolts securing the skids to the housing (Figure 17).



**Figure 17**

- |            |  |
|------------|--|
| 1. Skid    | 3. Nuts, washers, and bolts<br>(bolt heads to the outside) |
| 2. Housing |  |

3. Position the skids equally on both sides, to obtain a level scraping action, and secure the skids with the nuts, washers, and bolts (Figure 17).

**Note:** On smooth, paved surfaces, the scraper blade can be close to the surface

**Important:** The scraper should be higher above the pavement if the pavement surfaces are cracked, rough, or uneven.

# Storage

1. Before long term storage, wash the attachment with mild detergent and water to remove dirt and grime.
2. Check the condition of the scraper blade.
3. Check the auger-gearbox-oil level.
4. Check and tighten all bolts, nuts, and screws. Repair or replace any damaged or worn parts.
5. Paint all scratched or bare metal surfaces. Paint is available from your Authorized Service Dealer.
6. Store the attachment in a clean, dry garage or storage area. Cover it to protect it and keep it clean.

# Troubleshooting

Problem	Possible Cause	Corrective Action
The snowthrower does not operate.	<ol style="list-style-type: none"> <li>1. A hydraulic coupler is not completely connected</li> <li>2. A hydraulic coupler is damaged.</li> <li>3. There is an obstruction in a hydraulic hose.</li> <li>4. A hydraulic hose is kinked.</li> <li>5. The auxiliary valve on the traction unit is not opening.</li> <li>6. A hydraulic motor is damaged or worn.</li> </ol>	<ol style="list-style-type: none"> <li>1. Check and tighten all couplers.</li> <li>2. Check the couplers and replace any that are damaged.</li> <li>3. Find and remove the obstruction.</li> <li>4. Replace the kinked hose.</li> <li>5. Repair the valve.</li> <li>6. Replace or repair the motor.</li> </ol>



**Notes:**

# Declaration of Incorporation

Model No.	Serial No.	Product Description	Invoice Description	General Description	Directive
22456	315000001 and Up	Snowthrower, Compact Tool Carrier	SWS SNOWTHROWER CE	Compact Tool Carrier	2006/42/EC

Relevant technical documentation has been compiled as required per Part B of Annex VII of 2006/42/EC.

We will undertake to transmit, in response to requests by national authorities, relevant information on this partly completed machinery. The method of transmission shall be electronic transmittal.

This machinery shall not be put into service until incorporated into approved Toro models as indicated on the associated Declaration of Conformity and in accordance with all instructions, whereby it can be declared in conformity with all relevant Directives.

Certified:



Joe Hager  
Sr. Engineering Manager  
8111 Lyndale Ave. South  
Bloomington, MN 55420, USA  
January 10, 2017

EU Technical Contact:

Marcel Dutrieux  
Manager European Product Integrity  
Toro Europe NV  
Nijverheidsstraat 5

2260 Oevel  
Belgium

Tel. +32 16 386 659

## **European Privacy Notice**

### **The Information Toro Collects**

Toro Warranty Company (Toro) respects your privacy. In order to process your warranty claim and contact you in the event of a product recall, we ask you to share certain personal information with us, either directly or through your local Toro company or dealer.

The Toro warranty system is hosted on servers located within the United States where privacy law may not provide the same protection as applies in your country.

**BY SHARING YOUR PERSONAL INFORMATION WITH US, YOU ARE CONSENTING TO THE PROCESSING OF YOUR PERSONAL INFORMATION AS DESCRIBED IN THIS PRIVACY NOTICE.**

### **The Way Toro Uses Information**

Toro may use your personal information to process warranty claims, to contact you in the event of a product recall and for any other purpose which we tell you about. Toro may share your information with Toro's affiliates, dealers or other business partners in connection with any of these activities. We will not sell your personal information to any other company. We reserve the right to disclose personal information in order to comply with applicable laws and with requests by the appropriate authorities, to operate our systems properly or for our own protection or that of other users.

### **Retention of your Personal Information**

We will keep your personal information as long as we need it for the purposes for which it was originally collected or for other legitimate purposes (such as regulatory compliance), or as required by applicable law.

### **Toro's Commitment to Security of Your Personal Information**

We take reasonable precautions in order to protect the security of your personal information. We also take steps to maintain the accuracy and current status of personal information.

### **Access and Correction of your Personal Information**

If you would like to review or correct your personal information, please contact us by email at [legal@toro.com](mailto:legal@toro.com).

## **Australian Consumer Law**

Australian customers will find details relating to the Australian Consumer Law either inside the box or at your local Toro Dealer.



## The Toro Warranty

A One-Year Limited Warranty

Compact Utility Equipment  
(CUE) Products

### Conditions and Products Covered

The Toro Company and its affiliate, Toro Warranty Company, pursuant to an agreement between them, jointly warrant your Toro Compact Utility Equipment ("Product") to be free from defects in materials or workmanship. The following time periods apply from the date of purchase:

Products	Warranty Period
Pro Sneak Compact Tool Carriers, Trenchers, Stump Grinders, and Attachments	1 year or 1000 operating hours, whichever occurs first
Kohler Engines	3 years*
All other Engines	2 years*

Where a warrantable condition exists, we will repair the Product at no cost to you including diagnosis, labor, and parts.

\*Some engines used on Toro Products are warranted by the engine manufacturer.

### Instructions for Obtaining Warranty Service

If you think that your Toro Product contains a defect in materials or workmanship, follow this procedure:

1. Contact any Authorized Toro Compact Utility Equipment (CUE) Service Dealer to arrange service at their dealership. To locate a dealer convenient to you, access our website at [www.Toro.com](http://www.Toro.com). You may also call our Toro Customer Care Department toll free at the number below.
2. Bring the product and your proof of purchase (sales receipt) to the Service Dealer.
3. If for any reason you are dissatisfied with the Service Dealer's analysis or with the assistance provided, contact us at:

SWS Customer Care Department  
Toro Warranty Company  
8111 Lyndale Avenue South  
Bloomington, MN 55420-1196  
Toll Free: 888-384-9940

### Owner Responsibilities

You must maintain your Toro Product by following the maintenance procedures described in the *Operator's Manual*. Such routine maintenance, whether performed by a dealer or by you, is at your expense. Parts scheduled for replacement as required maintenance ("Maintenance Parts"), are warranted for the period of time up to the scheduled replacement time for that part. Failure to perform required maintenance and adjustments can be grounds for disallowing a warranty claim.

### Items and Conditions Not Covered

Not all product failures or malfunctions that occur during the warranty period are defects in materials or workmanship. This express warranty does not cover the following:

- Product failures which result from the use of non-Toro replacement parts, or from installation and use of add-on, modified, or unapproved accessories
- Product failures which result from failure to perform required maintenance and/or adjustments
- Product failures which result from operating the Product in an abusive, negligent or reckless manner
- Parts subject to consumption through use unless found to be defective. Examples of parts which are consumed, or used up, during normal product operation include, but are not limited to, belts, wipers, spark plugs, tires, filters, gaskets, wear plates, seals, O-rings, drive chains, clutches.
- Failures caused by outside influence. Items considered to be outside influence include, but are not limited to, weather, storage practices, contamination, use of unapproved coolants, lubricants, additives, or chemicals, etc.
- Normal "wear and tear" items. Normal "wear and tear" includes, but is not limited to, worn painted surfaces, scratched decals, etc.
- Repairs necessary due to failure to follow recommended fuel procedure (consult *Operator's Manual* for more details)
  - Removing contaminants from the fuel system is not covered
  - Use of old fuel (more than one month old) or fuel which contains more than 10% ethanol or more than 15% MTBE
  - Failure to drain the fuel system prior to any period of non-use over one month
- Any component covered by a separate manufacturer's warranty
- Pickup and delivery charges

### General Conditions

Repair by an Authorized Toro Compact Utility Equipment (CUE) Service Dealer is your sole remedy under this warranty.

**Neither The Toro Company nor Toro Warranty Company is liable for indirect, incidental or consequential damages in connection with the use of the Toro Products covered by this warranty, including any cost or expense of providing substitute equipment or service during reasonable periods of malfunction or non-use pending completion of repairs under this warranty. All implied warranties of merchantability and fitness for use are limited to the duration of this express warranty. Some states do not allow exclusions of incidental or consequential damages, or limitations on how long an implied warranty lasts, so the above exclusions and limitations may not apply to you.**

This warranty gives you specific legal rights, and you may also have other rights which vary from state to state.

Except for the engine warranty coverage and the Emissions warranty referenced below, if applicable, there is no other express warranty. The Emissions Control System on your Product may be covered by a separate warranty meeting requirements established by the U.S. Environmental Protection Agency (EPA) or the California Air Resources Board (CARB). The hour limitations set forth above do not apply to the Emissions Control System Warranty. Refer to the California Emission Control Warranty Statement supplied with your Product or contained in the engine manufacturer's documentation for details.

### Countries Other than the United States or Canada

Customers who have purchased Toro products outside the United States or Canada should contact their Toro Distributor (Dealer) to obtain guarantee policies for your country, province, or state. If for any reason you are dissatisfied with your Distributor's service or have difficulty obtaining guarantee information, contact the Toro importer. If all other remedies fail, you may contact us at Toro Warranty Company.

**Australian Consumer Law:** Australian customers will find details relating to the Australian Consumer Law either inside the box or at your local Toro Dealer.