



# Auger Bolt Pin Kit

## Power Max® Heavy Duty Snowthrower

Model No. 133-2576

### Installation Instructions

## Installation

### Loose Parts

Use the chart below to verify that all parts have been shipped.

Description	Qty.	Use
Bolt (5/16 x 2-1/2 inches)	2	Install the kit.
Spacer	2	
Locknut (5/16 inch)	2	
Bolt (1/4 x 2 inches)	2	
Locknut (1/4 inch)	2	

### Installing the Kit

1. Shut off the engine and secure the machine from movement before you begin to work on it.
2. Replace bolts, spacers (if applicable), and locknuts as needed; refer to [Figure 1](#) for the appropriate orientation.

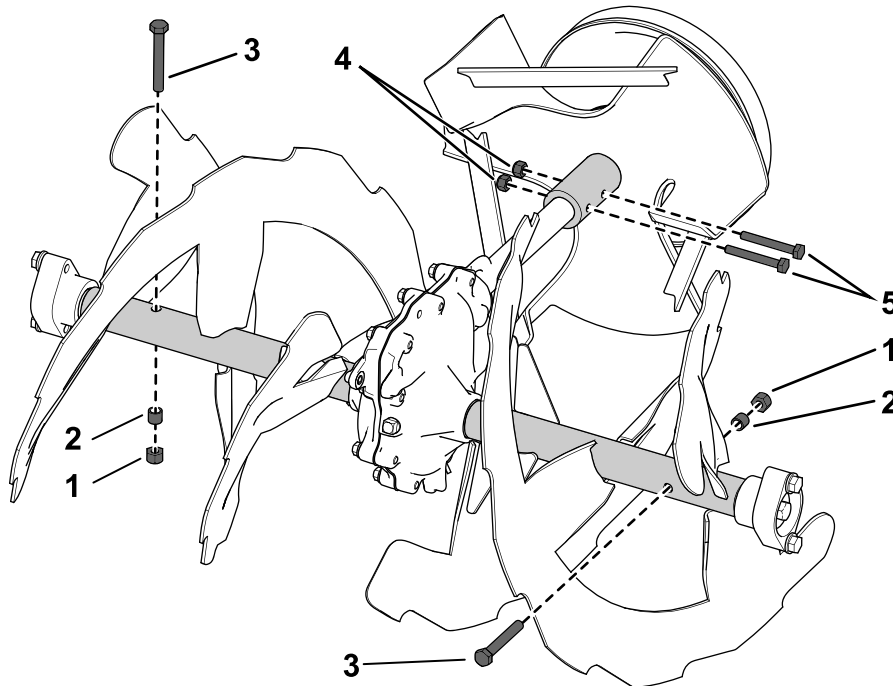


Figure 1

g186563

- |                        |                               |                          |
|------------------------|-------------------------------|--------------------------|
| 1. Locknut (5/16 inch) | 3. Bolt (5/16 x 2-1/2 inches) | 5. Bolt (1/4 x 2 inches) |
| 2. Spacer              | 4. Locknut (1/4 inch)         |                          |

