



Count on it.

Parts Catalog

MMX-655H-S

Mortar Mixer

Model No. 60213—Serial No. 40000000 and Up



Ordering Replacement Parts

To order replacement parts, please supply the part number, the quantity, and the description of each part desired.

Understanding Reference Numbers

Each identified part in an illustration has a reference number. The reference number for a part also appears in the parts list, along with other information about the part.

This catalog uses two special reference number formats, one to indicate parts in a service assembly and another to indicate the quantity of a given part in an illustration.

Service Assembly Reference Numbers

Parts in service assemblies have reference numbers in the form a:b. The a represents the reference number of the entire service assembly and the b represents a sequential number unique to each part within the service assembly.

For example, a wheel assembly might be identified by reference number 6, the tire by 6:1, the valve by 6:2, and the wheel by 6:3. When you order the assembly identified by reference number 6, you receive all parts identified by reference numbers 6:1, 6:2, and 6:3. However, you may also order any part individually. Reference numbers of this type appear in illustration and in parts lists.

Reference Numbers Indicating Quantity

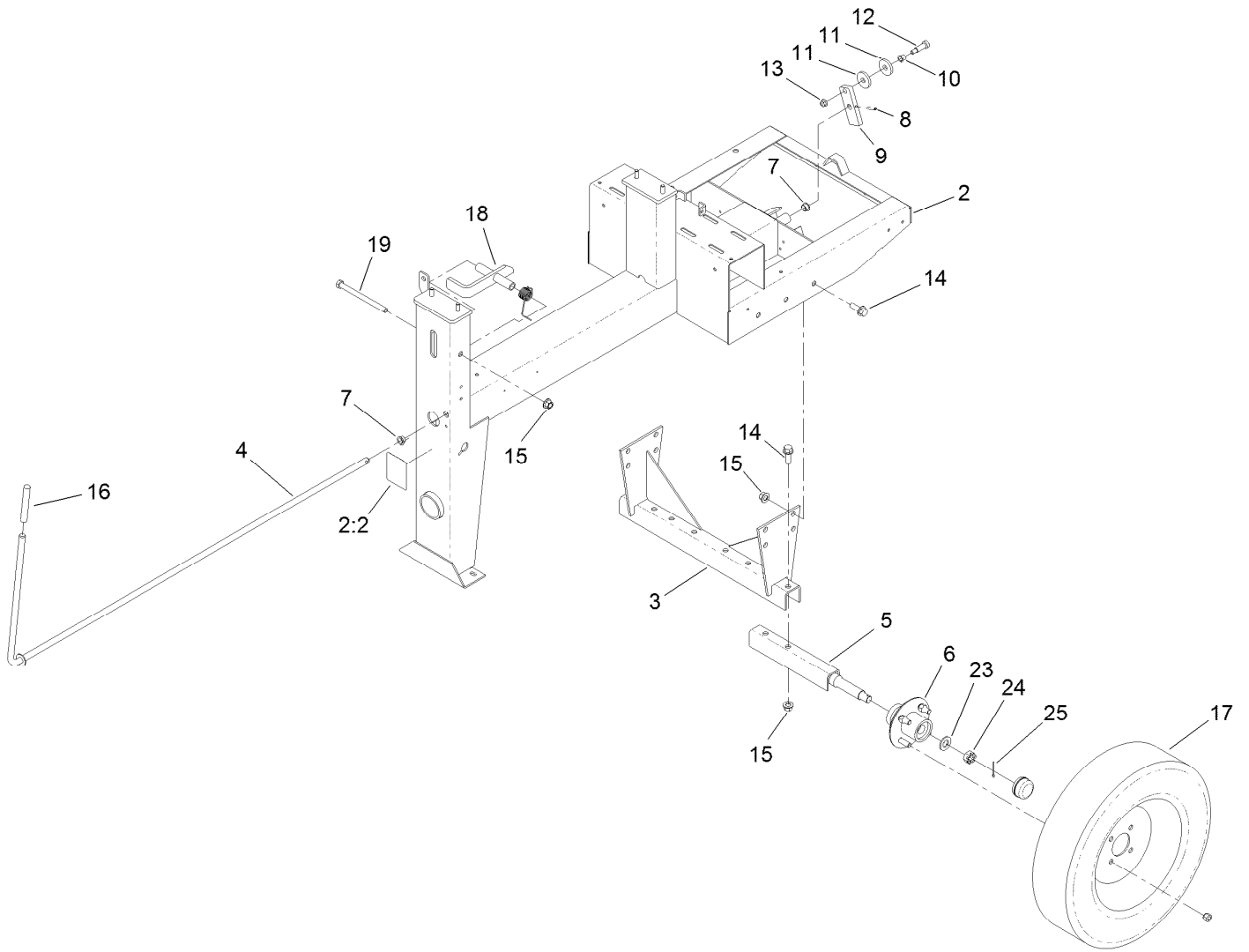
In an illustration, if a reference number indicates more than one part, the reference number has the form nX y. The n represents the quantity of the part, the X is the multiplication symbol, and the y represents the reference number.

For example, in an illustration, the reference number 2X 37 means that two of the parts identified by reference number 37 are indicated.

Contents

| | |
|---|----|
| Frame and Axle Assembly | 4 |
| Hub Assembly No. 125-8171 | 6 |
| Drum, Paddle and Bearing Assembly | 8 |
| Drive Assembly | 10 |
| Pinion Assembly No. 131-5704 | 12 |
| Cowl Assembly | 14 |
| Attachments and Accessories | 16 |

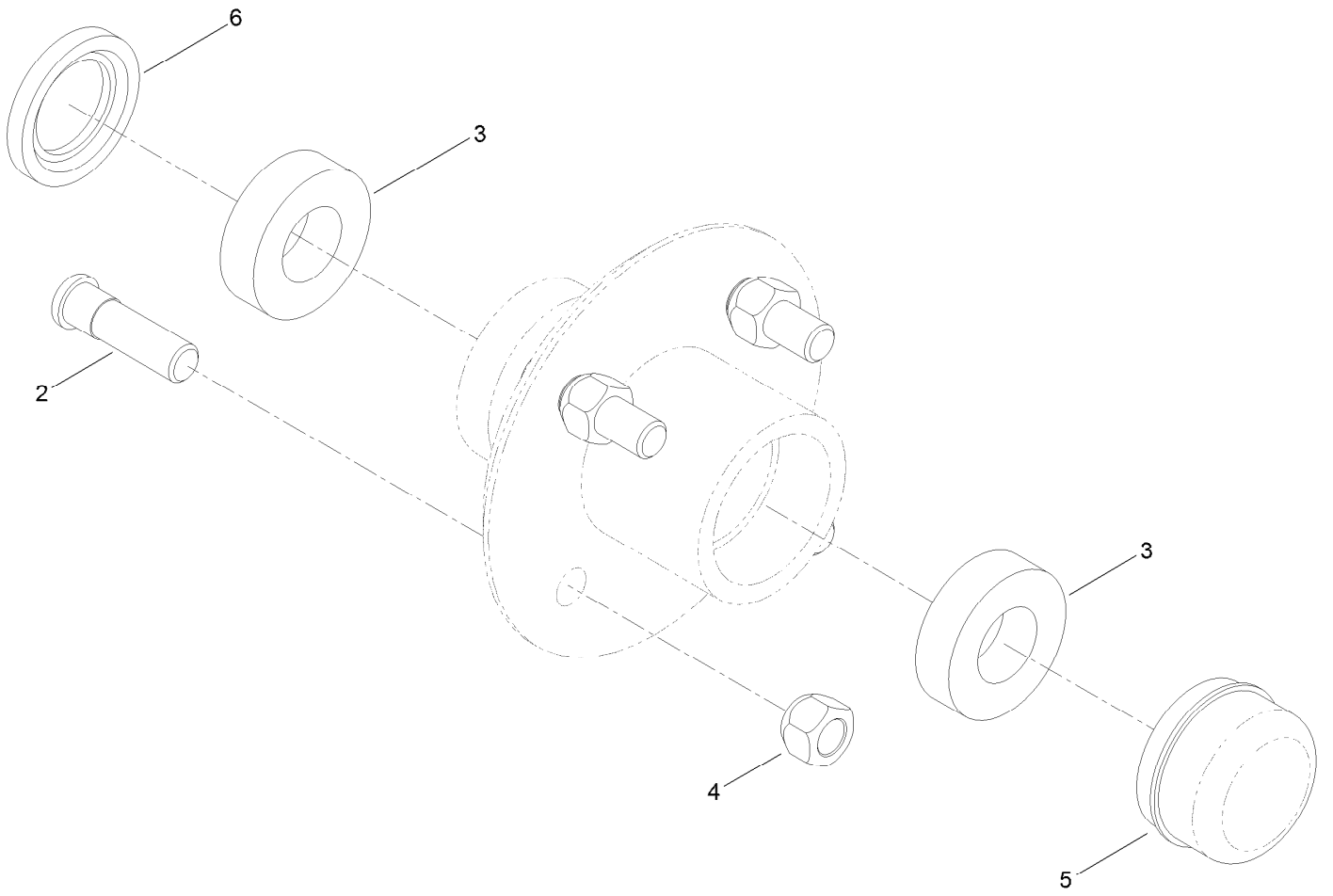
Frame and Axle Assembly



Frame and Axle Assembly (continued)

| <i>Ref.</i> | <i>Part Number</i> | <i>Qty.</i> | <i>Description</i> | <i>Ref.</i> | <i>Part Number</i> | <i>Qty.</i> | <i>Description</i> |
|-------------|--------------------|-------------|----------------------------|-------------|--------------------|-------------|--------------------|
| 2 | 131-7532 | 1 | Frame ASM | 12 | ST81153 | 1 | Screw-HSBH |
| 2:2 | 125-8216 | 1 | Decal-Safety Chain, Towing | 13 | 104-8301 | 1 | Nut-Flange, NI |
| 3 | 125-8219-03 | 1 | Support-Axle | 14 | 100-6116 | 8 | Screw-HHF |
| 4 | 131-5251-03 | 1 | Lever-Clutch | 15 | 99-5107 | 9 | Nut-Lock |
| 5 | ST22512-03 | 2 | Axle-Half | 16 | ST34687 | 1 | Grip-Handle |
| 6 | 125-8171 | 2 | Hub ASM | 17 | ST32306 | 2 | Tire And Rim ASM |
| 7 | ST32116 | 2 | Bushing-Flange | 18 | 132-7154-03 | 1 | Latch-Drum |
| 8 | 32121-69 | 1 | Pin-Spring | 19 | 325-33 | 1 | Screw-HH |
| 9 | ST39446 | 1 | Link-Clutch | 23 | 3256-28 | 2 | Washer-Flat |
| 10 | ST32099 | 1 | Bushing-Flange | 24 | ST80054 | 2 | Nut |
| 11 | ST26326 | 2 | Washer-Flat | 25 | 3272-13 | 2 | Pin-Cotter |

Hub Assembly No. 125-8171

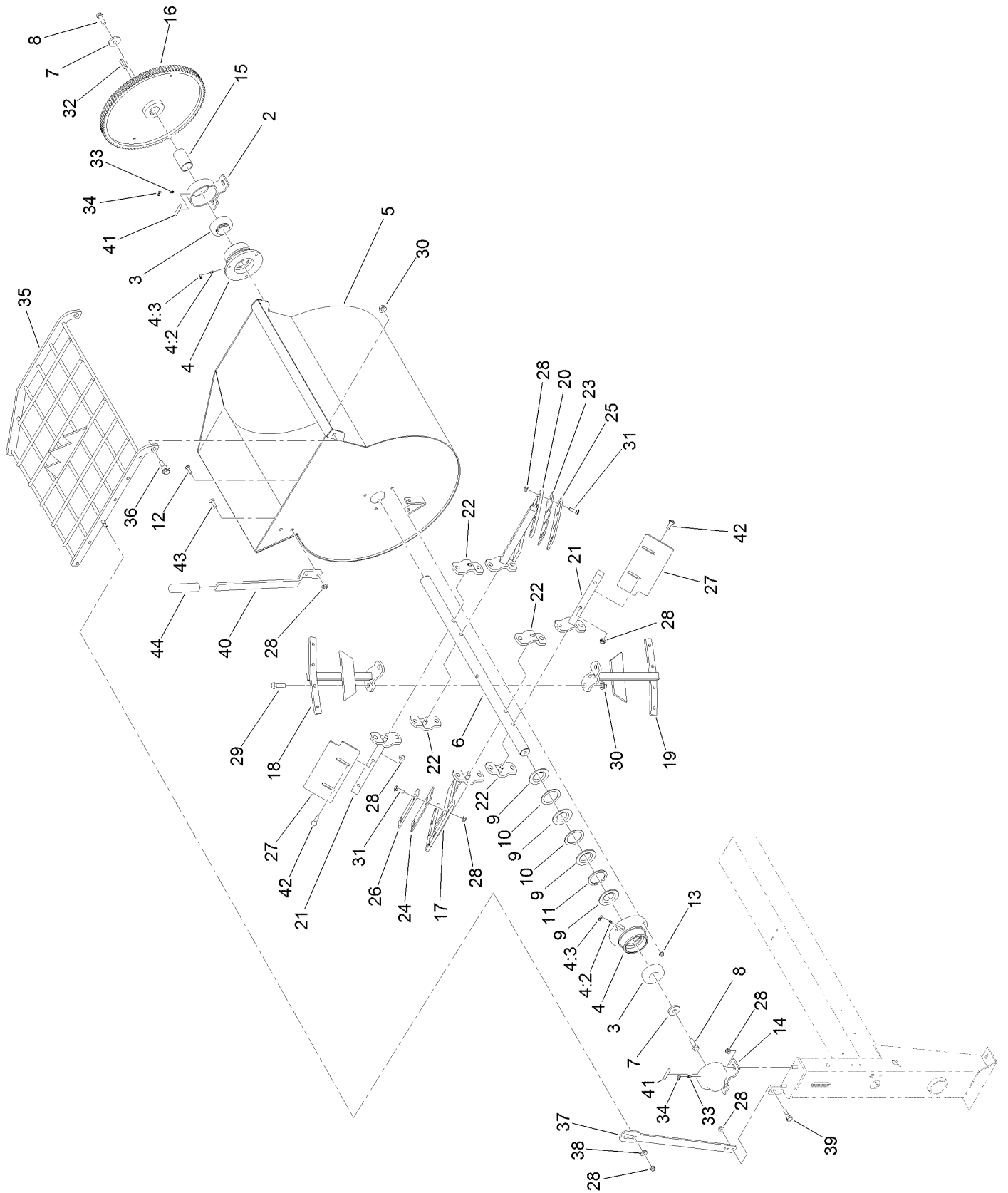


Hub Assembly No. 125-8171 (continued)

| <i>Ref.</i> | <i>Part Number</i> | <i>Qty.</i> | <i>Description</i> |
|-------------|--------------------|-------------|--------------------|
| 2 | ST39190 | 4 | Stud-Wheel |
| 3 | ST32233 | 2 | Bearing-Roller |
| 4 | ST80045 | 4 | Nut-Lug |

| <i>Ref.</i> | <i>Part Number</i> | <i>Qty.</i> | <i>Description</i> |
|-------------|--------------------|-------------|--------------------|
| 5 | ST34573 | 1 | Cap-Dust |
| 6 | ST32052 | 1 | Seal-Hub, Wheel |

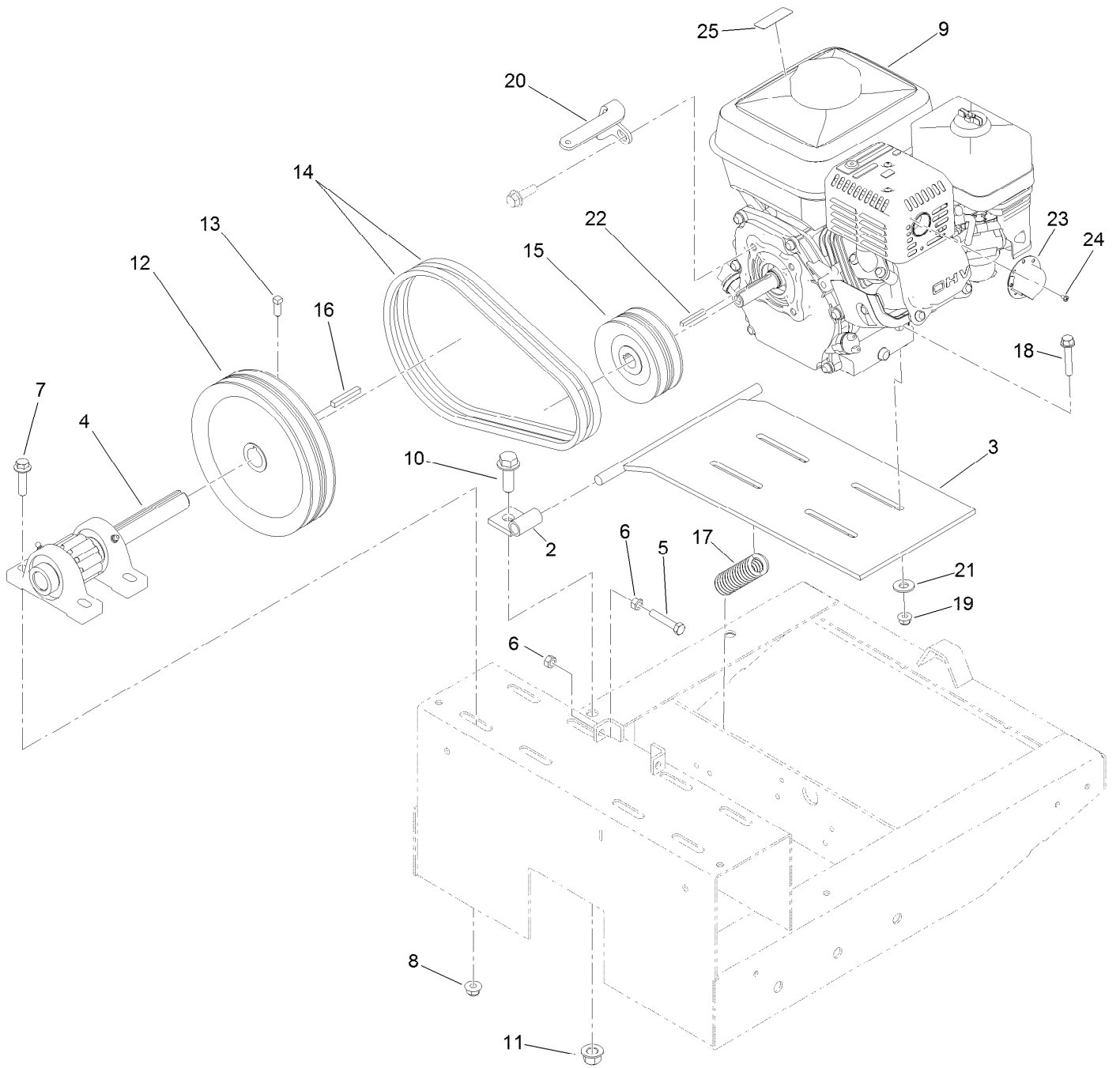
Drum, Paddle and Bearing Assembly



Drum, Paddle and Bearing Assembly (continued)

| <i>Ref.</i> | <i>Part Number</i> | <i>Qty.</i> | <i>Description</i> | <i>Ref.</i> | <i>Part Number</i> | <i>Qty.</i> | <i>Description</i> |
|-------------|--------------------|-------------|----------------------|-------------|--------------------|-------------|--------------------------|
| 2 | ST24021-01 | 1 | Trunnion | 23 | 131-5262 | 4 | Blade-Rubber, Top |
| 3 | ST32003 | 2 | Bearing-Ball | 24 | 131-5261 | 2 | Paddle-Rubber, Mixer End |
| 4 | 132-4117 | 2 | Kit-Housing, Bearing | 25 | 131-5285-01 | 4 | Plate-Backer, Top |
| 4:2 | ST46042 | 1 | Fitting-Grease | 26 | 131-5722-01 | 2 | BAR-Backer, End |
| 4:3 | ST47001 | 1 | Cap-Plug | 27 | 131-5717-01 | 2 | BAR-Backer, Pusher End |
| 5 | 131-5231-01 | 1 | Drum | 28 | 104-8301 | 32 | Nut-Flange, NI |
| 6 | 131-5237-01 | 1 | Shaft-Paddle | 29 | 325-7 | 10 | Screw-HH |
| 7 | ST26326 | 2 | Washer-Flat | 30 | 99-5107 | 12 | Nut-Lock |
| 8 | 325-6 | 2 | Screw-HH | 31 | 3231-25 | 20 | Bolt-CARR |
| 9 | ST32324 | 8 | Seal-Drum | 32 | ST81060 | 1 | Key-Square |
| 10 | ST24017 | 4 | Washer-Flat | 33 | ST46042 | 4 | Fitting-Grease |
| 11 | ST25881 | 2 | Washer-Split | 34 | ST47001 | 4 | Cap-Plug |
| 12 | 3230-3 | 6 | Screw-CARR | 35 | 131-5277-01 | 1 | Grate |
| 13 | 104-8300 | 6 | Nut-Flange, NI | 36 | 116-0780 | 2 | Screw-Shoulder, HHF |
| 14 | ST36574-01 | 1 | Trunnion-Capped | 37 | 131-5288-03 | 1 | Arm-Lift, Grate |
| 15 | 131-5276 | 1 | Spacer-Shaft | 38 | 80-6990 | 1 | Washer-Hardened |
| 16 | ST26933-03 | 1 | Gear-94 Teeth | 39 | 80-1300 | 1 | Bolt-Shoulder |
| 17 | 131-5278-01 | 1 | Paddle-Front | 40 | 131-7527-01 | 1 | Handle-Dump |
| 18 | 131-5281-01 | 1 | Paddle-Mid | 41 | 125-8175 | 2 | Decal-Grease |
| 19 | 131-5283-01 | 1 | Paddle-Mid | 42 | 3231-29 | 4 | Screw-CARR |
| 20 | 131-5284-01 | 1 | Paddle-Rear | 43 | 3231-28 | 2 | Screw-CARR |
| 21 | 130-2282-01 | 2 | Paddle-Pusher | 44 | 104-9838 | 1 | Grip-Foam |
| 22 | ST24107-01 | 4 | Clamp | | | | |

Drive Assembly

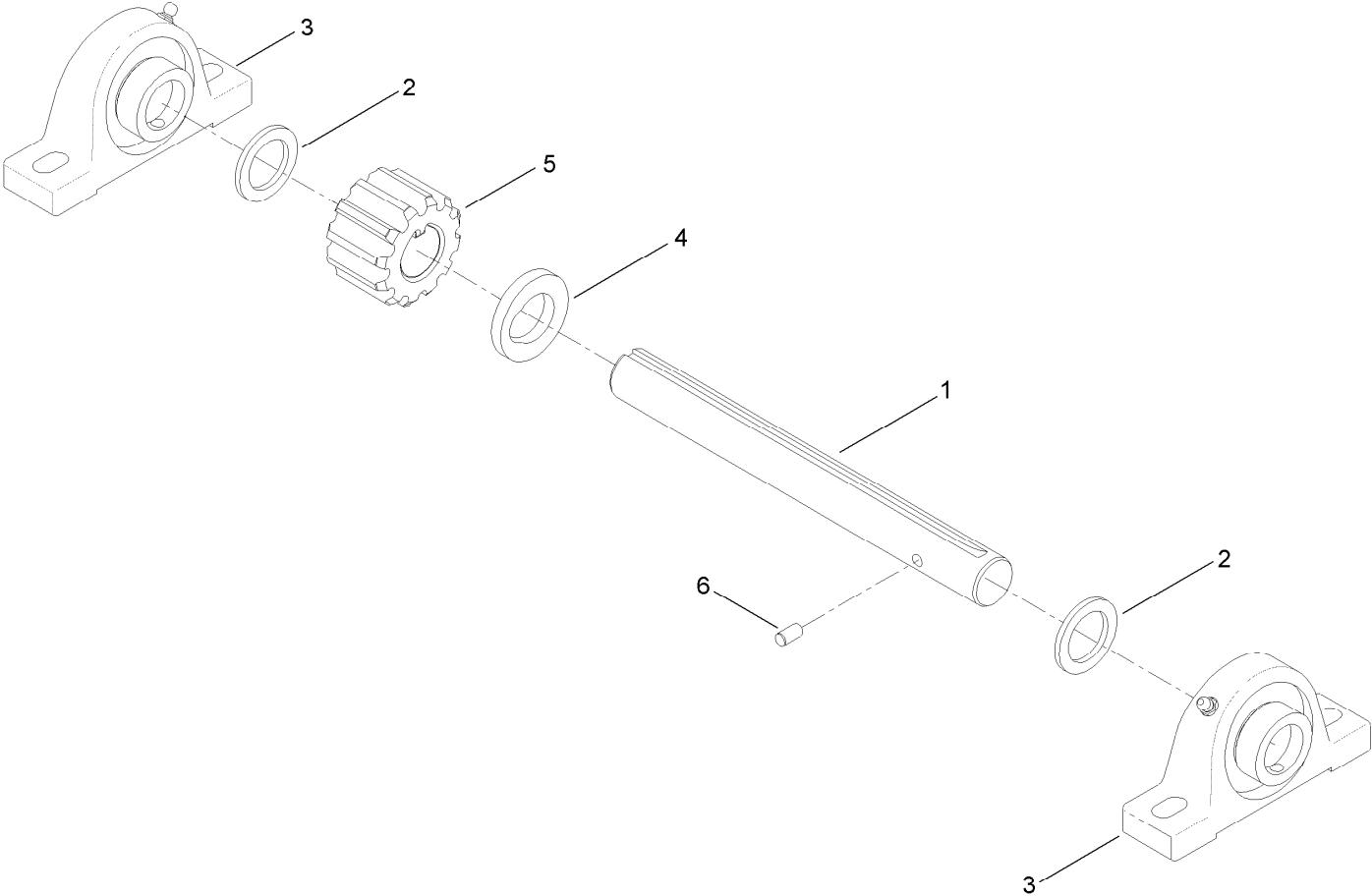


Drive Assembly (continued)

| <i>Ref.</i> | <i>Part Number</i> | <i>Qty.</i> | <i>Description</i> | <i>Ref.</i> | <i>Part Number</i> | <i>Qty.</i> | <i>Description</i> |
|-------------|--------------------|-------------|-----------------------|-------------|--------------------|-------------|------------------------|
| 2 | ST57786-03 | 2 | Mount-Motor | 14 | ST34052 | 2 | Belt-V |
| 3 | ST39565-03 | 1 | Base-Motor | 15 | ST38664 | 1 | Sheave |
| 4 | 131-5704 | 1 | Pinion ASM | 16 | 7-0238 | 1 | Key-Square |
| 5 | 322-41 | 1 | Screw-HH | 17 | ST34849 | 1 | Spring |
| 6 | 3217-6 | 2 | Nut-Hex | 18 | 94-5780 | 4 | Screw-HWH |
| 7 | 114-4681 | 4 | Screw-HHF | 19 | 104-8300 | 4 | Nut-Flange, NI |
| 8 | 104-8301 | 4 | Nut-Flange, NI | 20 | 127-1665-03 | 1 | Guide-Belt |
| 9 | 125-4820 | 1 | Engine-Honda, Gx160 ● | 21 | 3256-4 | 4 | Washer-Flat |
| 10 | 100-6116 | 2 | Screw-HHF | 22 | ST37716 | 1 | Key-Square |
| 11 | 99-5107 | 2 | Nut-Lock | 23 | 125-3866 | 1 | Deflector |
| 12 | ST38450 | 1 | Sheave | 24 | 125-0519 | 2 | Screw-Self Tapping |
| 13 | 120-6474 | 2 | Screw-Set, SQH | 25 | 130-8322 | 1 | Decal-Warning, Ethanol |

● Obtain parts from www.honda-engines.com

Pinion Assembly No. 131-5704

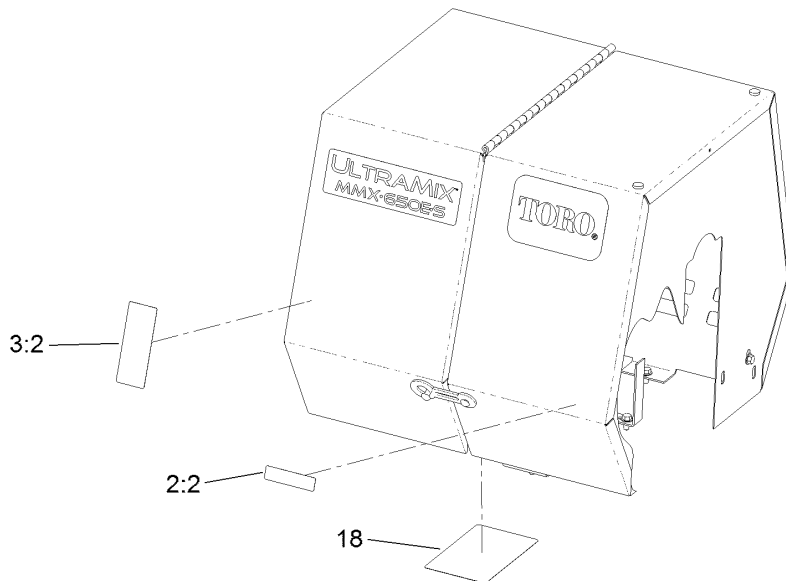
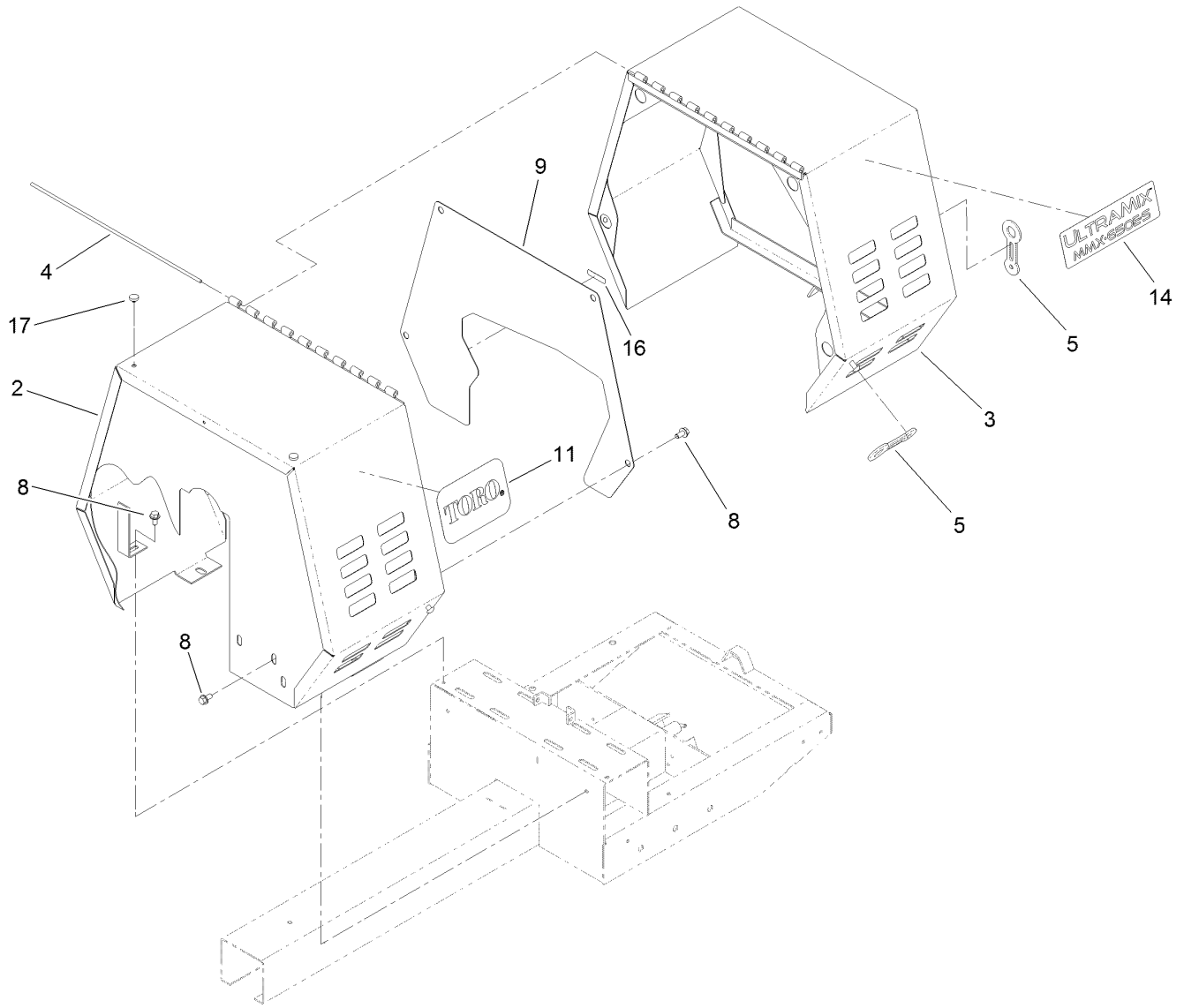


Pinion Assembly No. 131-5704 (continued)

| <i>Ref.</i> | <i>Part Number</i> | <i>Qty.</i> | <i>Description</i> |
|-------------|--------------------|-------------|-----------------------|
| 1 | 131-5705 | 1 | Shaft-Pinion |
| 2 | 3-8514 | 2 | Washer-Thrust |
| 3 | ST32208 | 2 | Bearing-Block, Pillow |

| <i>Ref.</i> | <i>Part Number</i> | <i>Qty.</i> | <i>Description</i> |
|-------------|--------------------|-------------|--------------------|
| 4 | 131-5706 | 1 | Washer |
| 5 | ST57625 | 1 | Gear-Spur |
| 6 | 95-0715 | 1 | Pin-Dowel |

Cowl Assembly



Cowl Assembly (continued)

| <i>Ref.</i> | <i>Part Number</i> | <i>Qty.</i> | <i>Description</i> | <i>Ref.</i> | <i>Part Number</i> | <i>Qty.</i> | <i>Description</i> |
|-------------|--------------------|-------------|-----------------------|-------------|--------------------|-------------|--------------------|
| 2 | 127-1683 | 1 | Stationary Cowl ASM | 9 | 125-6310-03 | 1 | Plate-Guard |
| 2:2 | 117-2718 | 1 | Decal-Arrester, Spark | 11 | 67-7320 | 2 | Decal |
| 3 | 127-1685 | 1 | Movable Cowl ASM | 14 | 131-5726 | 2 | Decal |
| 3:2 | 125-4939 | 1 | Decal-Warning | 16 | 125-8175 | 1 | Decal-Grease |
| 4 | ST44368 | 1 | Pin | 17 | 1-513658 | 2 | Bumper |
| 5 | ST47182 | 3 | Latch-Rubber | 18 | 132-3993 | 1 | Decal-Service |
| 8 | 110-9380 | 10 | Screw-HWH | | | | |

Attachments and Accessories

For 60213 MMX-655H-S Mortar Mixer

| Product Name | Model/Part |
|-----------------------------------|-------------------|
| 31in Forged Tow Pole Hitch | 68056 |
| 31in Pintel Tow Pole Hitch | 68058 |
| 31in Stamped Tow Pole Hitch | 68060 |
| Trailer Light Kit..... | 68062 |

Notes:

Notes:

Notes:



Count on it.