



# CE Bagger Compliance Kit

## TimeCutter® HD Riding Mower

Model No. 137-5001

Form No. 3415-409 Rev A

### Installation Instructions

# Installation

## Loose Parts

Use the chart below to verify that all parts have been shipped.

Procedure	Description	Qty.	Use
<b>1</b>	No parts required	—	Remove the existing curtain and knob.
<b>2</b>	Curtain Bolt (1/4 x 5/8 inch)	1 1	Install the new curtain.

## ⚠ WARNING

### CALIFORNIA Proposition 65 Warning

This product contains a chemical or chemicals known to the State of California to cause cancer, birth defects, or reproductive harm.

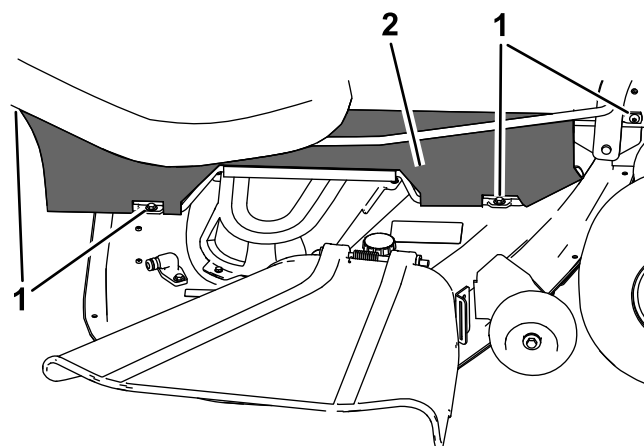
# 1

## Removing the Existing Curtain and Knob

No Parts Required

## Procedure

1. Park the machine on a level surface, shut off the engine, engage the parking brake, and remove the key.
2. Remove the existing curtain by loosening the bolts holding the curtain to the frame and the mower deck (Figure 1).



g213267

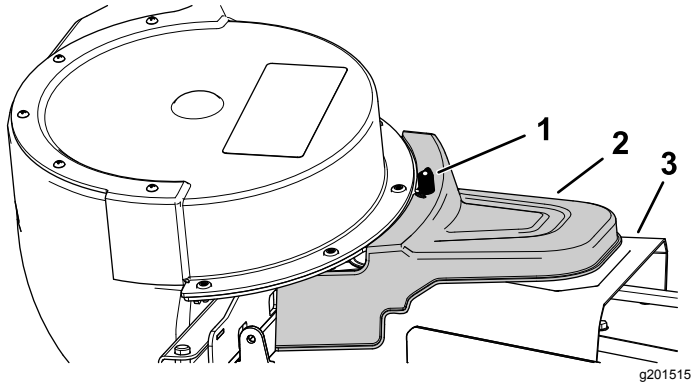
Figure 1

1. Bolts

2. Curtain

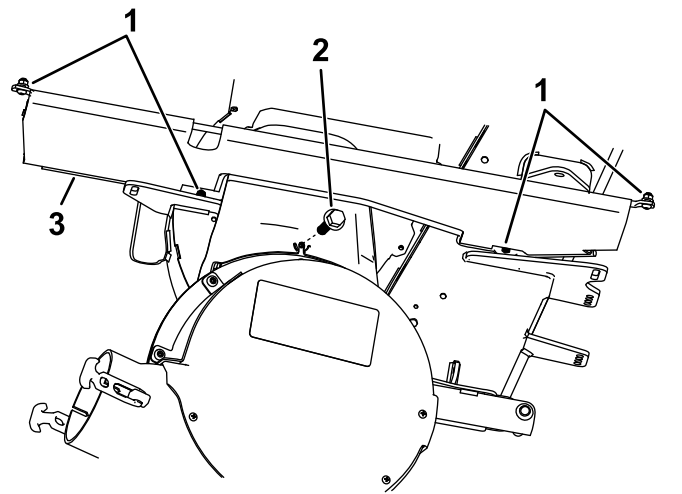


3. Remove the knob shown in [Figure 2](#).



**Figure 2**

1. Knob
2. Powered bagger cover
3. Belt cover



**Figure 3**

1. Existing curtain hardware
2. Bolt (1/4 x 5/8 inch)
3. New curtain

## 2

## Installing the New Curtain

Parts needed for this procedure:

1	Curtain
1	Bolt (1/4 x 5/8 inch)

## Procedure

1. Remove the bolts and retaining nuts from the straight rod in the existing curtain and retain the nuts and bolts.
2. Remove the straight rod from the existing curtain.
3. Install the straight rod into the new curtain and install the previously removed bolts and retaining nuts.
4. Install the new curtain to the frame and the mower deck using the existing hardware ([Figure 3](#)).
5. Install the bolt (1/4 x 5/8 inch) into the hole where the knob was removed ([Figure 3](#)).