



TUV In-Line Fuse Kit

Model No. 111-5101

Model No. 111-6190

Form No. 3406-902 Rev B

Installation Instructions

Installing the Kit

1. Park the machine on a level surface and engage the parking brake.

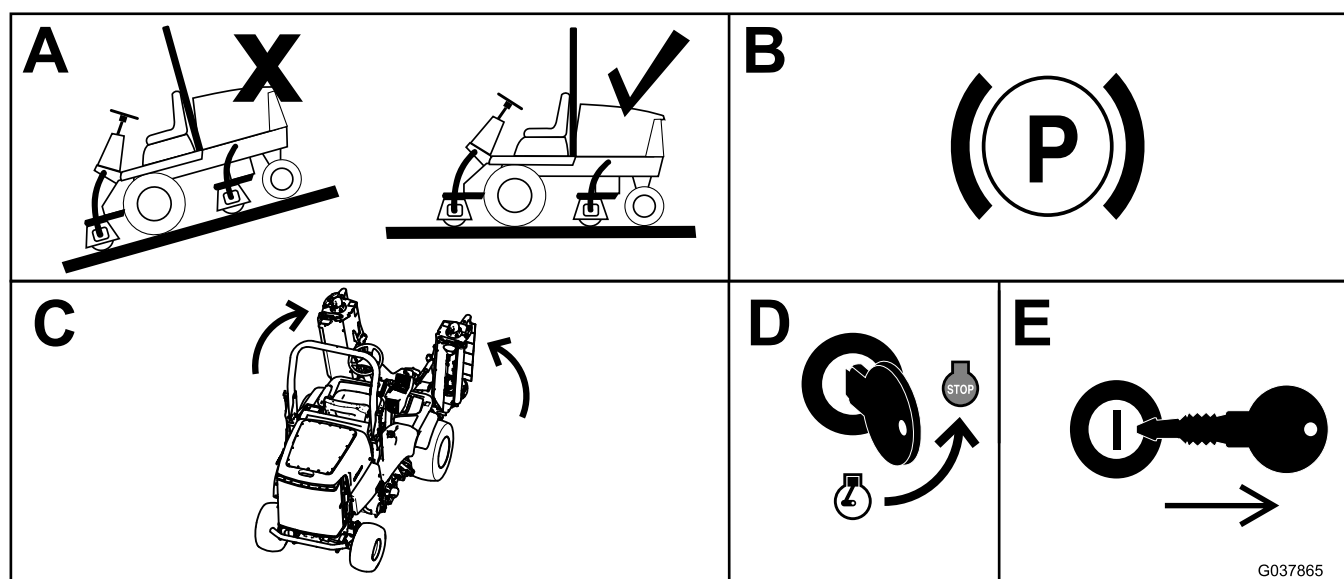


Figure 1

2. Raise the cutting units.
3. Shut off the engine and remove the key.

⚠ WARNING

If you leave the key in the ignition switch, someone could accidentally start the machine and seriously injure you or other bystanders.

Remove the key from the ignition switch before you do any maintenance.

4. Lock the cutting units in the raised position using the transport latches.
5. Locate the connector for 1 of the rear position lamps.
6. Disconnect the lamp.
7. Install the in-line fuse between the connectors (Figure 2).

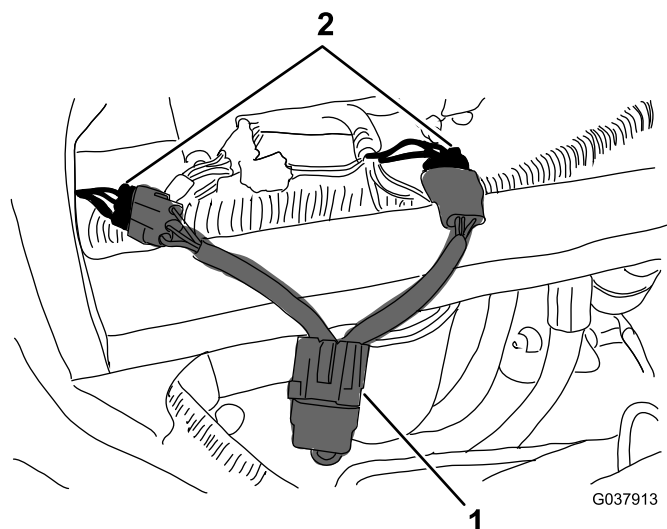


Figure 2
Typical installation

1. Fuse housing
2. Lamp connectors

8. Repeat the procedure for the lamp on the other side of the machine.

