



MODEL NO. 79301—4900001 & up

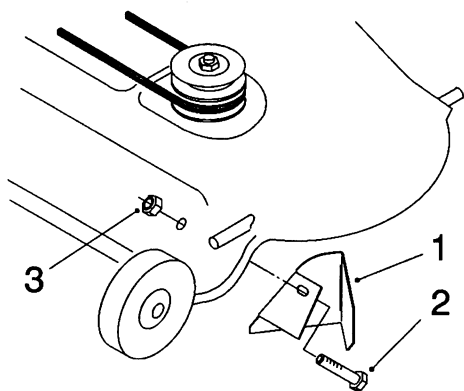
**Pre-Delivery
Dealer Check List****WHEEL HORSE®**

Twin Vac-Bagger for 42" & 48" GT Series Mowers

- ☐ Prepare the mower according to the instructions under *Mower Preparation*, in the Twin Vac Bagger Operator's Manual.

☐ **Install the Grass Baffle****42" Mower Grass Baffle Installation**

1. Install the grass baffle on the inside of the mower, using a $\frac{3}{8}$ " x 1" hex-head bolt and $\frac{3}{8}$ " nylon lock nut in the hole closest to the discharge opening (Fig. 1). Be sure the grass baffle is tight against the underside of the mower.
2. Rotate the blade to assure it does not hit the baffle. Adjust the baffle if the blade hits it.

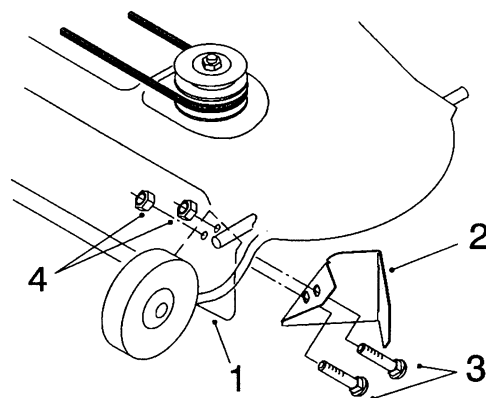
**Figure 1**

- 1. Grass plate
- 2. Hex-head bolt ($\frac{3}{8}$ " x 1")
- 3. Nylon lock nut ($\frac{3}{8}$ ")

48" Mower Grass Baffle Installation

1. Remove the two hex-head bolts and nuts holding the grass plate (on the inside of the mower) near the back edge of the discharge opening. Do not use the bolt and nut again.

2. Install both the grass plate (removed in step 1) and the new grass baffle on the inside of the mower, using two $\frac{5}{16}$ " x 1" carriage bolt and $\frac{5}{16}$ " nylon lock nut (Fig. 2). Be sure the grass baffle is tight against the underside of the mower.
3. Rotate the blade to assure it does not hit the baffle. Adjust the baffle if the blade hits it.

**Figure 2**

- 1. Grass plate
- 2. Grass baffle
- 3. Carriage bolt ($\frac{5}{16}$ " x 1")
- 4. Nylon lock nut ($\frac{5}{16}$ ")

☐ **Leveler Bar Installation (42" Mower)**

1. Remove the current leveler bar and replace it with the new one supplied.

☐ **Mount the Blower Pivot Support**

1. Slide the pivot support onto the threaded rod that is welded onto the front of the mower near the discharge opening (Fig. 3).

Note: The pivot support has one hole for mounting it to a 42" mower, and a different hole for the 48" mower (Fig 3).

2. Screw the $\frac{3}{8}$ " deflector jam nut (Fig. 3) onto the threaded rod until the nut is flush with the end of the rod.

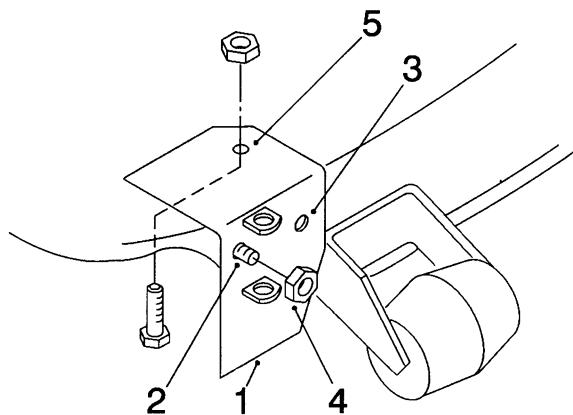


Figure 3

- | | |
|-----------------------|------------------------------------|
| 1. Pivot support | 4. Jam nut |
| 2. Hole for 42" mower | 5. $\frac{11}{32}$ " diameter hole |
| 3. Hole for 48" mower | |

3. Push the vertical side (front) of the pivot support against the front of the mower and clamp it snugly making sure the top of the pivot support lies flat on top of the mower.
4. Drill an $\frac{11}{32}$ " diameter hole in the mower, using the hole in the pivot support as a template (Fig. 3). Remove the clamp after you drill the hole.
5. Secure the pivot support to the top of the mower using a $\frac{5}{16}$ " x $\frac{3}{4}$ " hex-head bolt (from the underside of the mower) and a $\frac{5}{16}$ " hex-head flange nut.

□ Assemble the Blower

1. Install the blower mounting plate assembly to the blower housing using three $\frac{5}{16}$ " x $\frac{3}{4}$ " carriage bolts and $\frac{5}{16}$ " hex-head flange nuts (Fig. 4).
2. Install the L-shaped support bracket inside the blower housing using a $\frac{5}{16}$ " x 1" hex-head bolt, $\frac{5}{16}$ " flat washer and $\frac{5}{16}$ " hex-head flange nut (Fig. 4). Do not tighten the flange nut.
3. Pull the L-shaped support bracket (Fig. 4) up tight against the inside wall of the blower housing and tighten the flange nut.

4. Insert the #10 x $\frac{3}{4}$ " screw through the extended loop at the end of the tension spring (Fig. 5). Screw one #10 nut to within $\frac{1}{8}$ inch (3.2 mm) from the screw head, allowing the spring to pivot freely (Fig. 5).

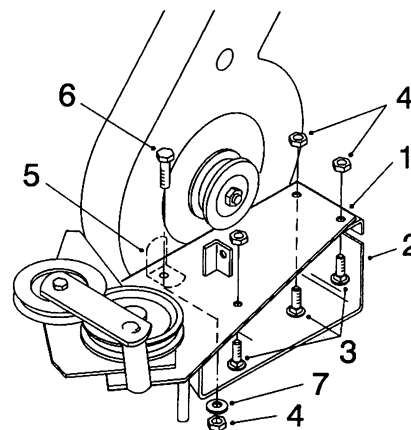


Figure 4

- | | |
|---|---|
| 1. Blower mounting plate | 5. L-shaped bracket |
| 2. Blower housing | 6. Hex-head bolt ($\frac{5}{16}$ " x 1") |
| 3. Carriage bolts ($\frac{5}{16}$ " x $\frac{3}{4}$ ") | 7. Flat washer ($\frac{5}{16}$ ") |
| 4. Hex-head flange nuts ($\frac{5}{16}$ ") | |

5. Slide one $\frac{7}{32}$ " washer onto the spring and screw assembly (Fig. 5). Insert the screw through the hole in the blower housing from the outside and secure in place with another $\frac{7}{32}$ " flat washer and #10 nut (Fig. 5). Tighten the nut snugly.

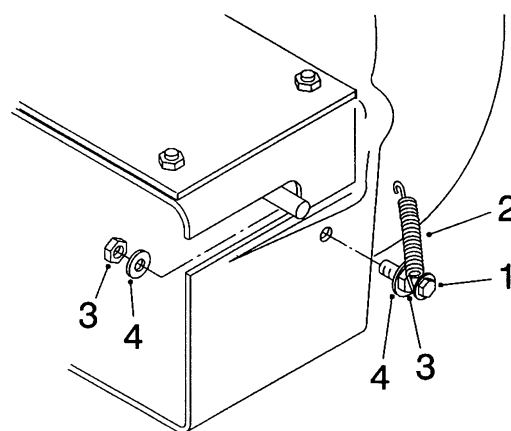


Figure 5

- | | |
|----------------------------------|------------------------------------|
| 1. Screw (#10 x $\frac{3}{4}$ ") | 3. Nut (#10) |
| 2. Spring | 4. Flat washer ($\frac{7}{32}$ ") |

6. Two latches are supplied. Select the long latch for a 48" mower and the short latch for a 42" mower.

To install the latch, hook the end of the spring in the

small hole in the latch. Slide the $\frac{1}{4}$ " x $\frac{3}{4}$ " hex-head bolt through the latch and the hole in the blower housing. Secure in place with a $\frac{1}{4}$ " washer and $\frac{1}{4}$ " nylon lock nut (Fig. 6), **but make sure the latch pivots freely.**

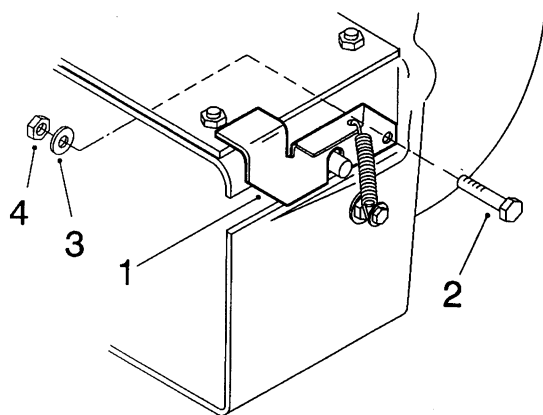


Figure 6

- | | |
|--|---------------------------------------|
| 1. Latch | 3. Flat washer ($\frac{1}{4}$ ") |
| 2. Hex-head bolt ($\frac{1}{4}$ " x $\frac{3}{4}$ ") | 4. Nylon lock nut ($\frac{1}{4}$ ") |

❑ Mount the Blower to the Mower

Refer to the instructions under *Mount the Blower to the Mower*, in the Twin Vac Bagger Operator's Manual.

❑ Install the Belt Covers

Refer to the instructions under *Install the Belt Covers*, in the Twin Vac Bagger Operator's Manual.

❑ Assemble the Bagger

1. Remove the four frame bolts and nuts from the rear of the tractor (Fig. 7), and do not use them.
2. Install the two support brackets to the frame, using four $\frac{5}{16}$ " x $\frac{7}{8}$ " hex-head bolts and $\frac{5}{16}$ " nylon lock nuts (Fig. 7). The wide bracket must be on the left side and the narrow bracket on the right of the tractor frame.

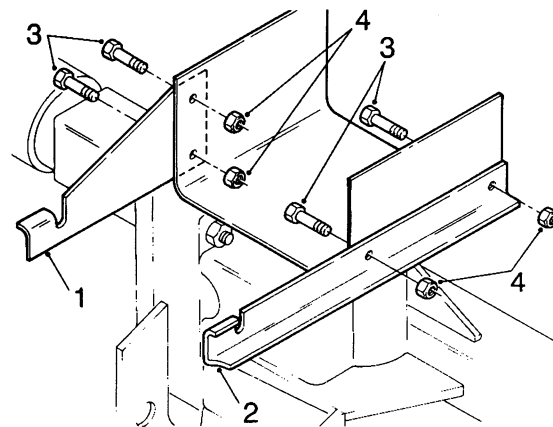


Figure 7

- | | |
|-------------------------------|---|
| 1. Left-hand support bracket | 3. Hex-head bolt ($\frac{5}{16}$ " x $\frac{7}{8}$ ") |
| 2. Right-hand support bracket | 4. Nylon lock nut ($\frac{5}{16}$ ") |

3. Install the "full-bag" indicator rod through the hole in the rubber seal and the slot in the bagger cover (Fig. 8). Mount the full-bag indicator rod against the bagger cover using two clips, $\frac{1}{4}$ " x $\frac{5}{8}$ " pan-head screws, and $\frac{1}{4}$ " nylon lock nuts (Fig. 8).
4. Screw the jam nut completely onto the indicator rod (Fig. 8). Then screw the handle (Fig. 8) close to the jam nut so you can read the decal from the operator's position. Tighten the jam nut up against the handle to lock it in place.

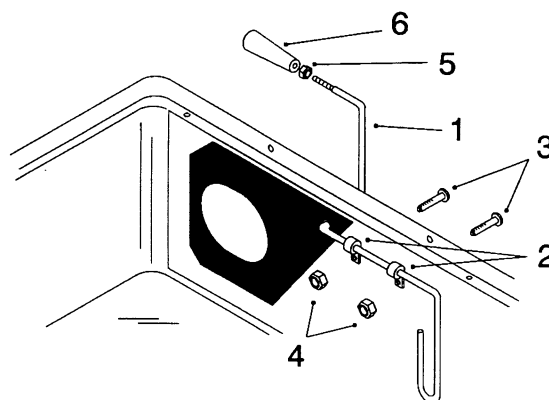


Figure 8

- | | |
|---|---------------------------------------|
| 1. "Full-bag" indicator rod | 4. Nylon lock nut ($\frac{1}{4}$ ") |
| 2. Clips | 5. Jam nut |
| 3. Pan-head screw ($\frac{1}{4}$ " x $\frac{5}{8}$ ") | 6. Handle |

5. Mount the frame and hinge assembly to the bagger top (Fig. 9) using two $\frac{1}{4}$ " x $\frac{3}{4}$ " bolts (already installed on the hinge assembly) and two $\frac{1}{4}$ " nylon

lock nuts.

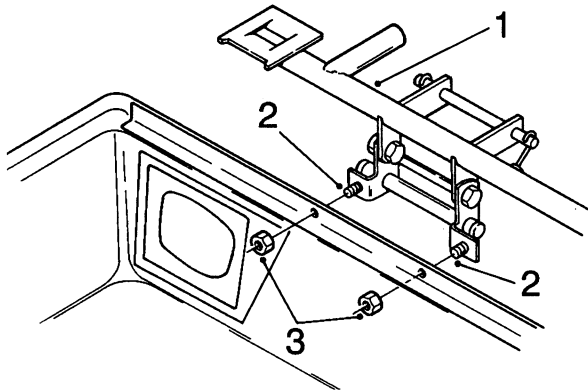


Figure 9

- | | |
|--------------------------------|--------------------------|
| 1. Frame and hinge assembly | 3. Nylon lock nut (1/4") |
| 2. Hex-head bolt (1/4" x 3/4") | |

❑ Install the Bagger Assembly

Refer to the instructions under *Install the Bagger Assembly* in the Twin Vac Bagger Operator's Manual.

❑ Assemble the Discharge Tube

1. Cut 2-3/4" (7 cm) off the bottom of the discharge tube (Fig. 10).
2. Attach the rubber latch to the **middle** hole in the discharge tube using the plastic two-piece fastener (Fig. 10). Install the flanged spacer through the hole in the discharge tube from the inside. Place the rubber latch (grip tab up) over the spacer shaft. Insert the barbed fastener into the hole in the flanged spacer and push them together.

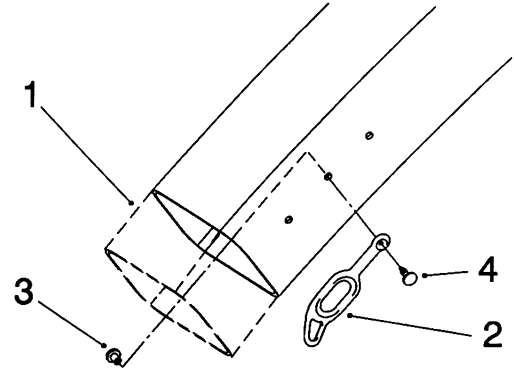


Figure 10

- | | |
|------------------------------------|--------------------|
| 1. Discharge tube (cut off 2-3/4") | 3. Flanged spacer |
| 2. Rubber latch | 4. Barbed fastener |

❑ Install the Discharge Tube

1. Insert the upper end of the discharge tube into the bagger cover. Slide the lower end of the discharge tube over the blower discharge opening.
2. Hook the rubber latch on the discharge tube onto the blower knob (Fig. 11).

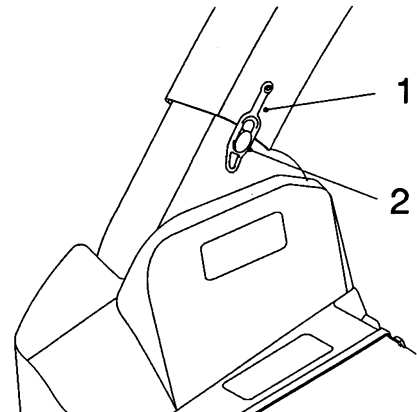


Figure 11

- | | |
|-----------------|----------------|
| 1. Rubber latch | 2. Blower knob |
|-----------------|----------------|