



Form No. 3358-476 Rev C

**Count on it.**

# Parts Catalog

## Core Harvester Adapter Kit Workman® Vehicles

Model No. 44242



# Ordering Replacement Parts

To order replacement parts, please supply the part number, the quantity, and the description of each part desired.

## Understanding Reference Numbers

Each identified part in an illustration has a reference number. The reference number for a part also appears in the parts list, along with other information about the part.

This catalog uses two special reference number formats, one to indicate parts in a service assembly and another to indicate the quantity of a given part in an illustration.

## Service Assembly Reference Numbers

Parts in service assemblies have reference numbers in the form a:b. The a represents the reference number of the entire service assembly and the b represents a sequential number unique to each part within the service assembly.

For example, a wheel assembly might be identified by reference number 6, the tire by 6:1, the valve by 6:2, and the wheel by 6:3. When you order the assembly identified by reference number 6, you receive all parts identified by reference numbers 6:1, 6:2, and 6:3. However, you may also order any part individually. Reference numbers of this type appear in illustration and in parts lists.

## Reference Numbers Indicating Quantity

In an illustration, if a reference number indicates more than one part, the reference number has the form nX y. The n represents the quantity of the part, the X is the multiplication symbol, and the y represents the reference number.

For example, in an illustration, the reference number 2X 37 means that two of the parts identified by reference number 37 are indicated.

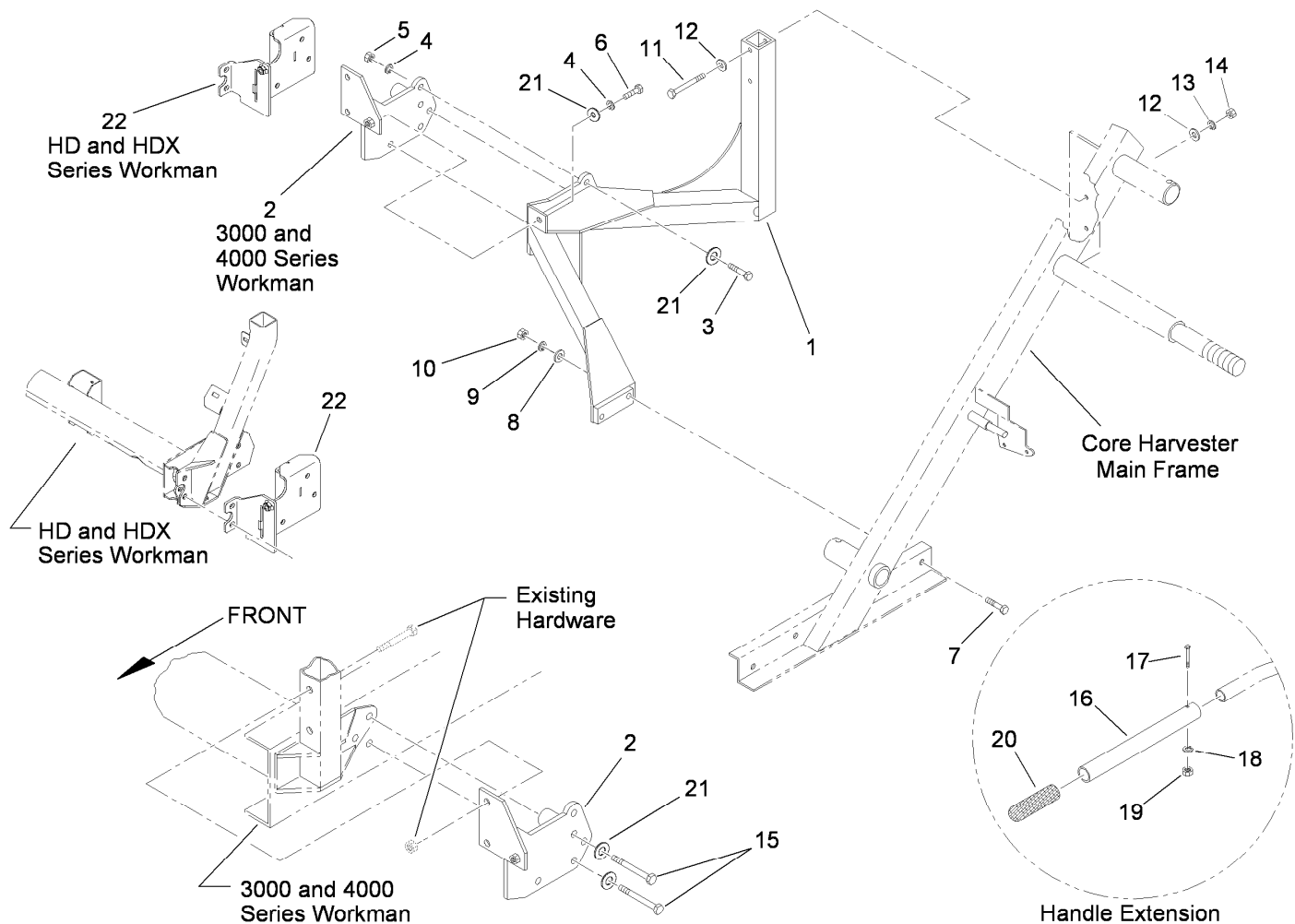
# Contents

Bracket Assembly..... 4

Conveyor and Tube Assembly ..... 5

Hydraulic Schematic for Workman Models Prior to Serial Number 239999999 ..... 6

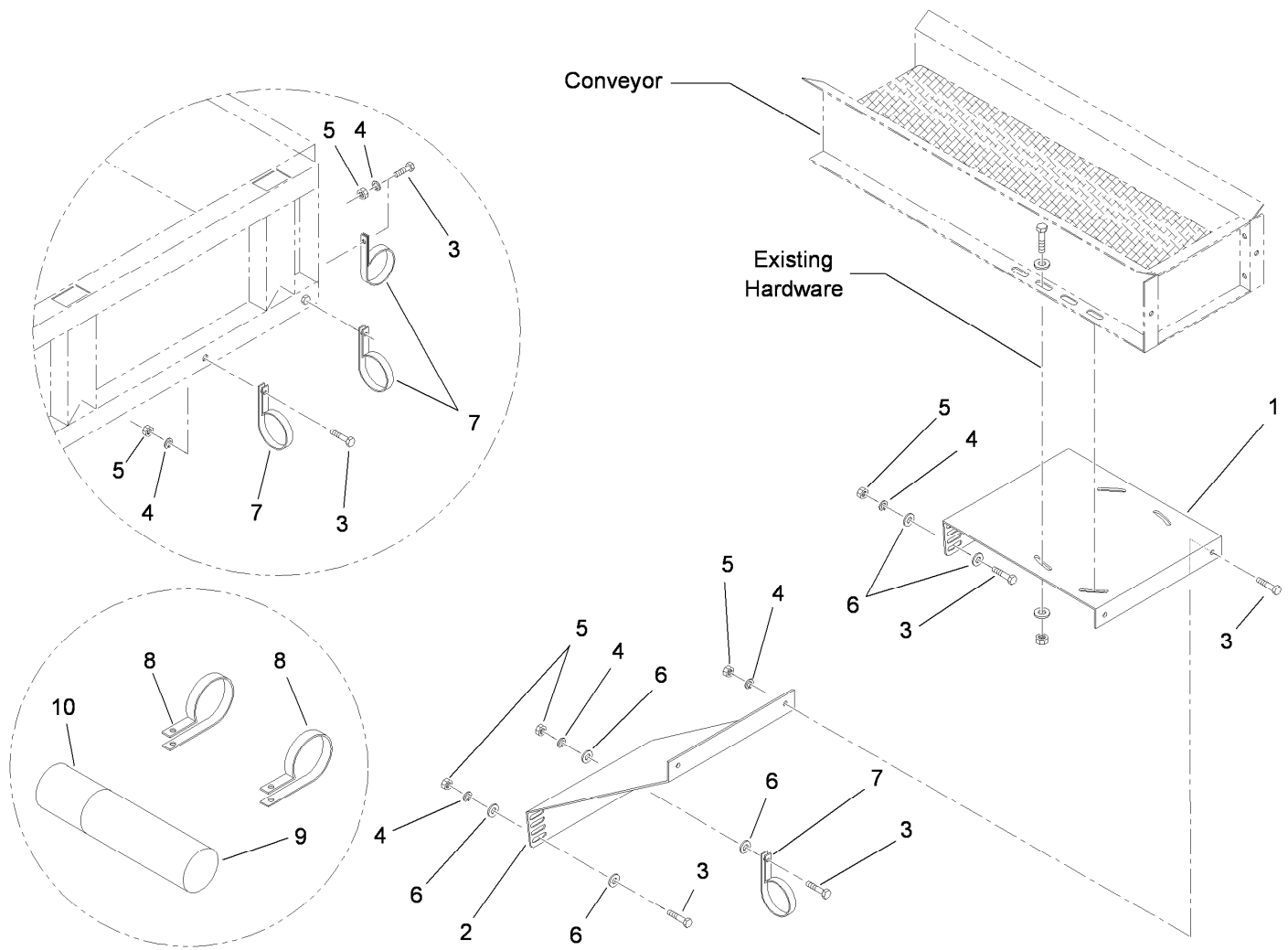
Hydraulic Schematic for Workman Models Serial Range 240000001 and Up..... 7



## Bracket Assembly

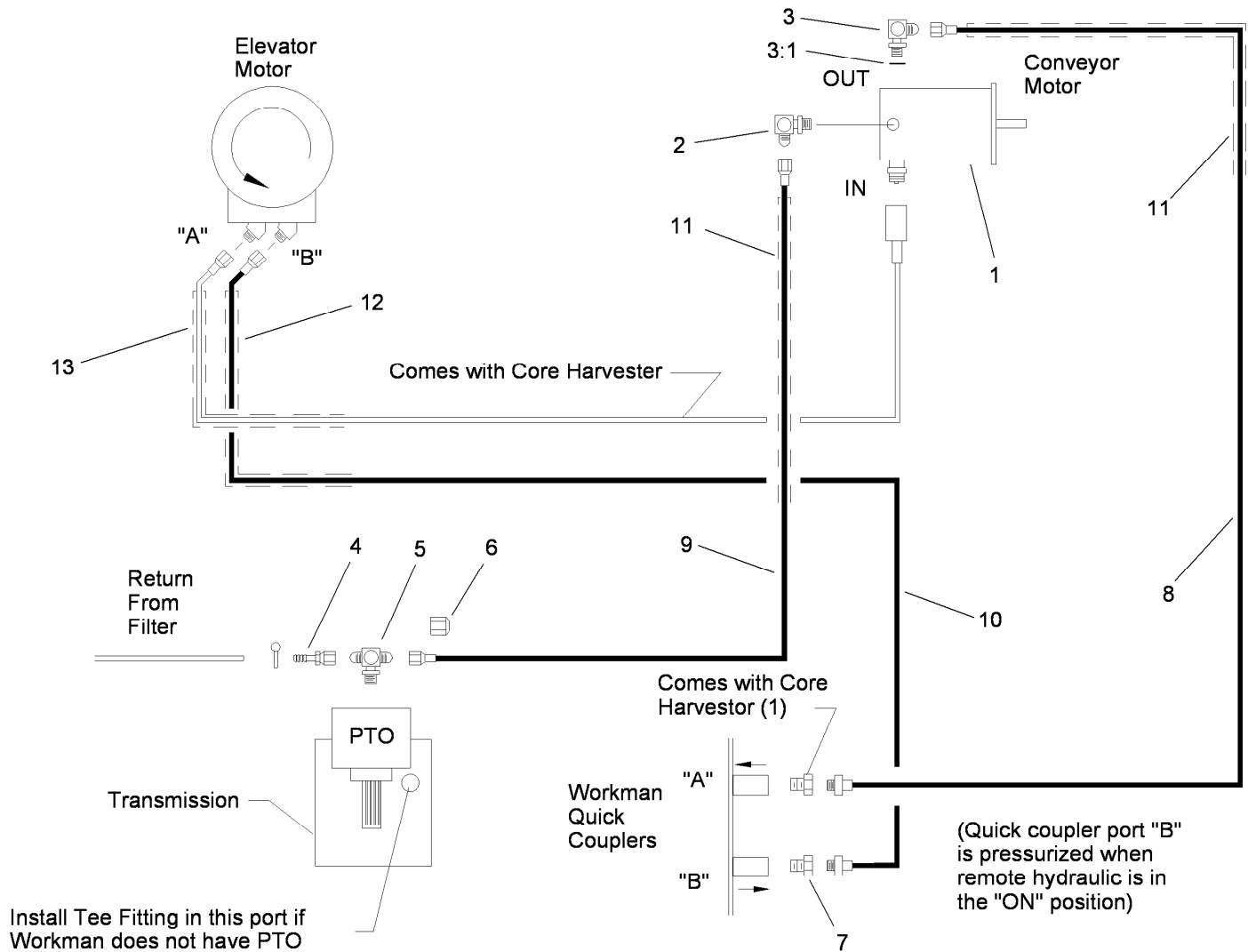
Ref.	Part Number	Qty.	Description
1	92-4394-03	1	Bracket Mount ASM
2	92-4393-03	1	Plate Mount ASM
3	325-5	3	Screw-HH
4	3253-7	4	Washer-Lock
5	3217-9	3	Nut-HH
6	325-4	1	Screw-HH
7	323-9	2	Screw-HH
8	3256-4	2	Washer-Flat
9	3253-5	2	Washer-Lock
10	3217-7	2	Nut-Hex
11	322-13	2	Screw-HH

Ref.	Part Number	Qty.	Description
12	3256-3	4	Washer-Flat
13	3253-4	2	Washer-Lock
14	3217-6	2	Nut-Hex
15	325-17	2	Screw-HH
16	92-4444-03	1	Handle-Extension
17	321-9	1	Screw-HH
18	3253-3	1	Washer-Lock
19	3217-5	1	Nut-Hex
20	74-1360	1	Grip-Handle
21	3256-26	6	Washer-Flat
22	119-0685-03	1	Plate Mount ASM



## Conveyor and Tube Assembly

Ref.	Part Number	Qty.	Description
1	92-4391-03	1	Mount-Conveyor, Upper
2	92-4390-03	1	Mount-Conveyor, Lower
3	323-6	8	Screw-HH
4	3253-5	8	Washer-Lock
5	3217-7	8	Nut-Hex
6	3256-4	8	Washer-Flat
7	92-4374	4	Retainer-Hose
8	2412-133	2	R-Clamp
9	104-7050	1	Tube-Manual
10	104-7048	1	Cap-Housing

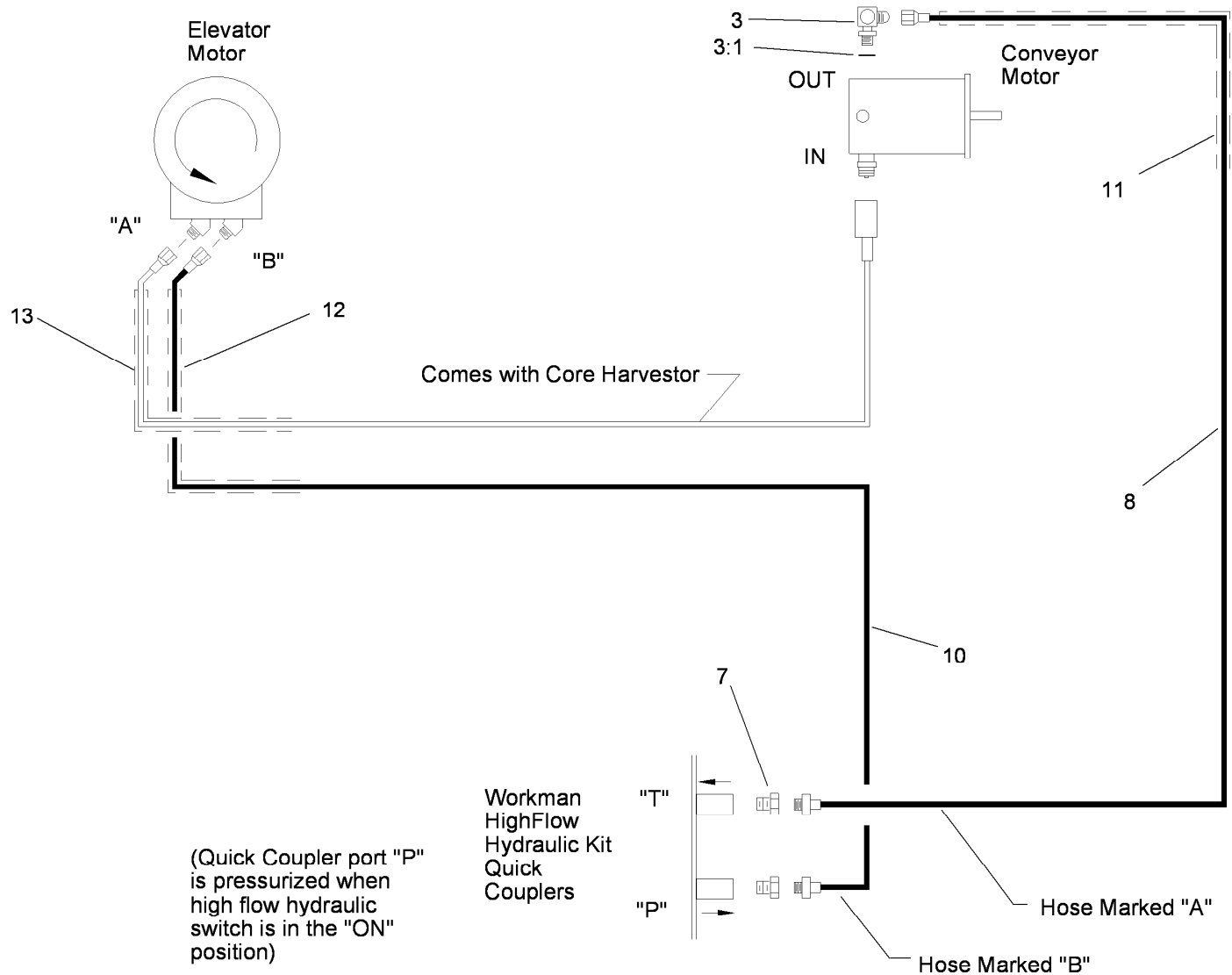


## Hydraulic Schematic for Workman Models Prior to Serial Number 239999999

Ref.	Part Number	Qty.	Description
1	92-4240	1	Motor-Hydraulic ■
1	92-4329	1	Seal ●■
2	01-201-4210	1	Elbow ■
3	353-426	1	Fitting-90 DEG
3:1	237-80	1	O-Ring
4	01-201-4500	1	Barb-Hose ■
5	01-201-4510	1	Tee ■
6	01-201-4520	1	Cap ■
7	92-2672	1	Coupling-HYD
8	95-4947	1	Hose-HYD
9	01-312-5610	1	Hose-Hyd ■
10	01-312-5620	1	Hose-HYD
11	92-4611	2	Cover-Hose
12	92-4612	1	Cover-Hose
13	92-4613	1	Cover-Hose

● Not illustrated

■ Not included in kit. Service parts only for use with Workman models prior to serial number 239999999



## Hydraulic Schematic for Workman Models Serial Range 240000001 and Up

Ref.	Part Number	Qty.	Description
3	353-426	1	Fitting-90 DEG
3:1	237-80	1	O-Ring
7	106-1382	2	Fitting-Straight
8	95-4947	1	Hose-HYD
10	01-312-5620	1	Hose-HYD
11	92-4611	1	Cover-Hose
12	92-4612	1	Cover-Hose
13	92-4613	1	Cover-Hose



**Count on it.**