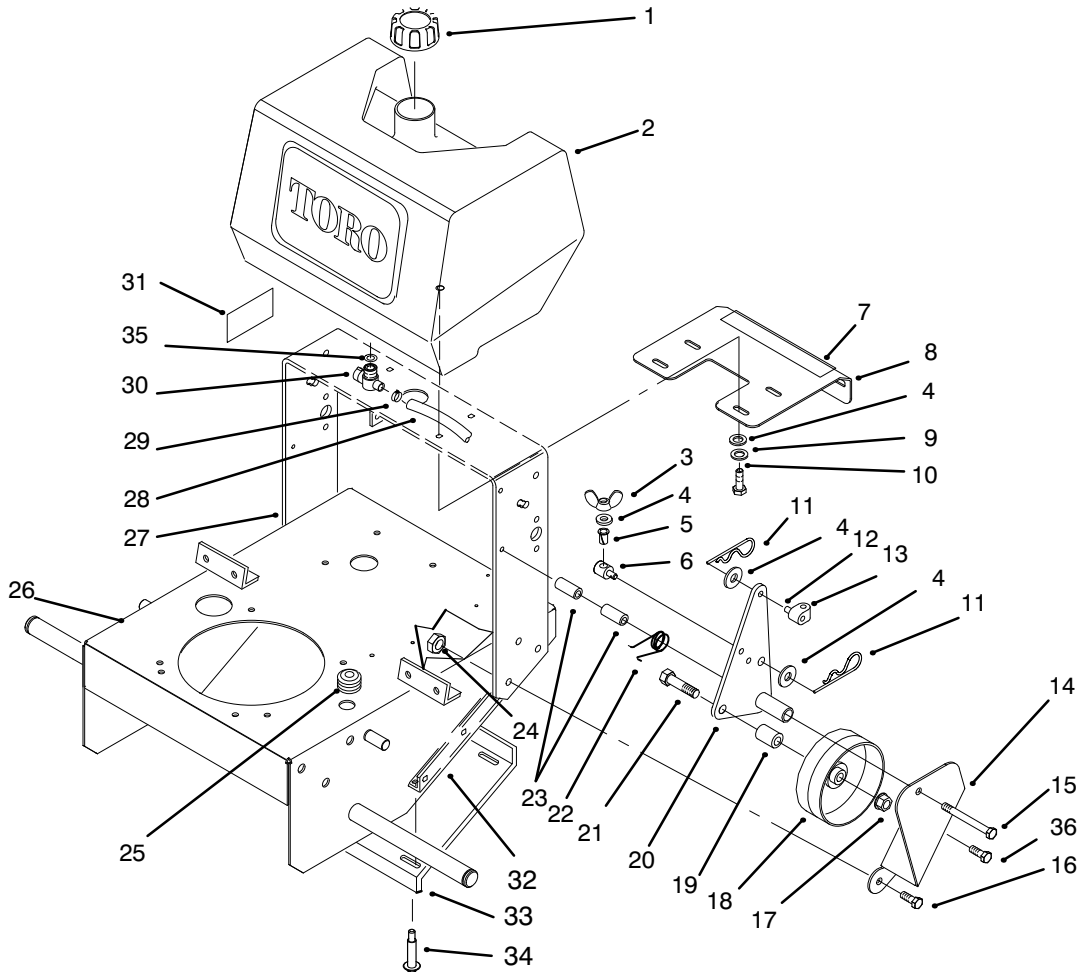




MODEL NO. 30165-890001 & UP

**PARTS
CATALOG**

**ProLine® MID SIZE TRACTION UNIT
12.5 HP Kawasaki Gear Drive**



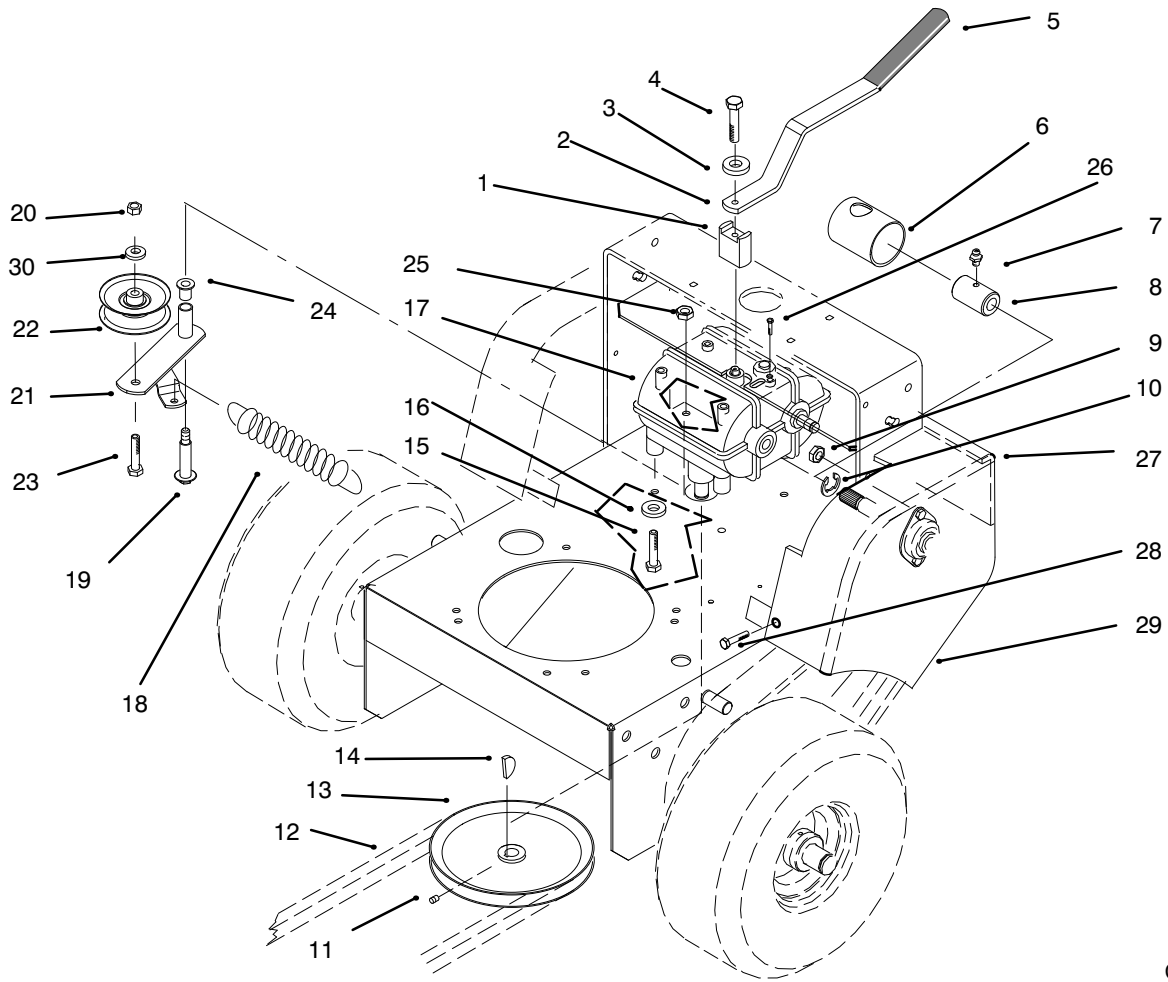
C-2151

FRAME, FUEL TANK AND WHEEL DRIVE IDLER

| Ref. No. | Part No. | Description | No. Used |
|----------|----------|------------------------|----------|
| 1 | 55-3570 | Fuel Tank | 1 |
| 2 | 95-2802 | Tank - Fuel | 1 |
| 3 | 32103-25 | Nut - Wing | 2 |
| 4 | 3256-23 | Washer - Flat | 9 |
| 5 | 52-2890 | Bushing | 2 |
| 6 | 68-9690 | Fitting - Rod | 2 |
| 7 | 93-7297 | Decal - Ground Speed | 1 |
| 8 | 66-7400 | Plate - Control | 1 |
| 9 | 3253-4 | Washer - Lock | 4 |
| 10 | 322-4 | Screw - Hex. Hd. | 4 |
| 11 | 3290-307 | Pin - Cotter | 4 |
| 12 | 283-6 | Pin - Clevis | 2 |
| 13 | 74-0521 | Fitting - Rod | 2 |
| 14 | 67-6380 | Bracket - Support L.H. | 1 |
| * | 67-6370 | Bracket - Support R.H. | 1 |
| 15 | 323-16 | Screw - Hex. Hd. | 2 |
| 16 | 323-7 | Screw - Hex. Hd. | 4 |
| 17 | 3296-23 | Nut - Lock | 2 |
| 18 | 51-4480 | Idler - Wheel | 2 |
| 19 | 51-4490 | Spacer - Idler Wheel | 2 |

| Ref. No. | Part No. | Description | No. Used |
|----------|----------|-----------------------|----------|
| 20 | 74-0220 | Idler - Bracket L.H. | 1 |
| * | 74-0230 | Idler - Bracket R.H. | 1 |
| 21 | 51-4450 | Screw - Leveler | 2 |
| 22 | 51-4380 | Spring - Torsion L.H. | 1 |
| * | 51-4370 | Spring - Torsion R.H. | 1 |
| 23 | 74-0040 | Spacer - Pivot Idler | 4 |
| 24 | 3296-39 | Nut - Lock | 6 |
| 25 | 237-124 | Grommet | 1 |
| 26 | 93-7438 | Frame | 1 |
| 27 | 74-0360 | Frame - Rear | 1 |
| 28 | 47-2982 | Hose - Fuel | 1 |
| 29 | 2412-98 | Clamp - Fuel line | 1 |
| 30 | 74-0510 | Valve - Fuel | 1 |
| 31 | 93-9353 | Decal - Fuel Shut Off | 1 |
| 32 | 93-7436 | Mount - Angle | 2 |
| 33 | 93-7437 | Panel - Bottom | 1 |
| 34 | 12-3270 | Screw - Hex. Hd. | 4 |
| 35 | 237-7 | "O"Ring | 1 |
| 36 | 323-8 | Screw - Hex. Hd. | 2 |

*Not Illustrated

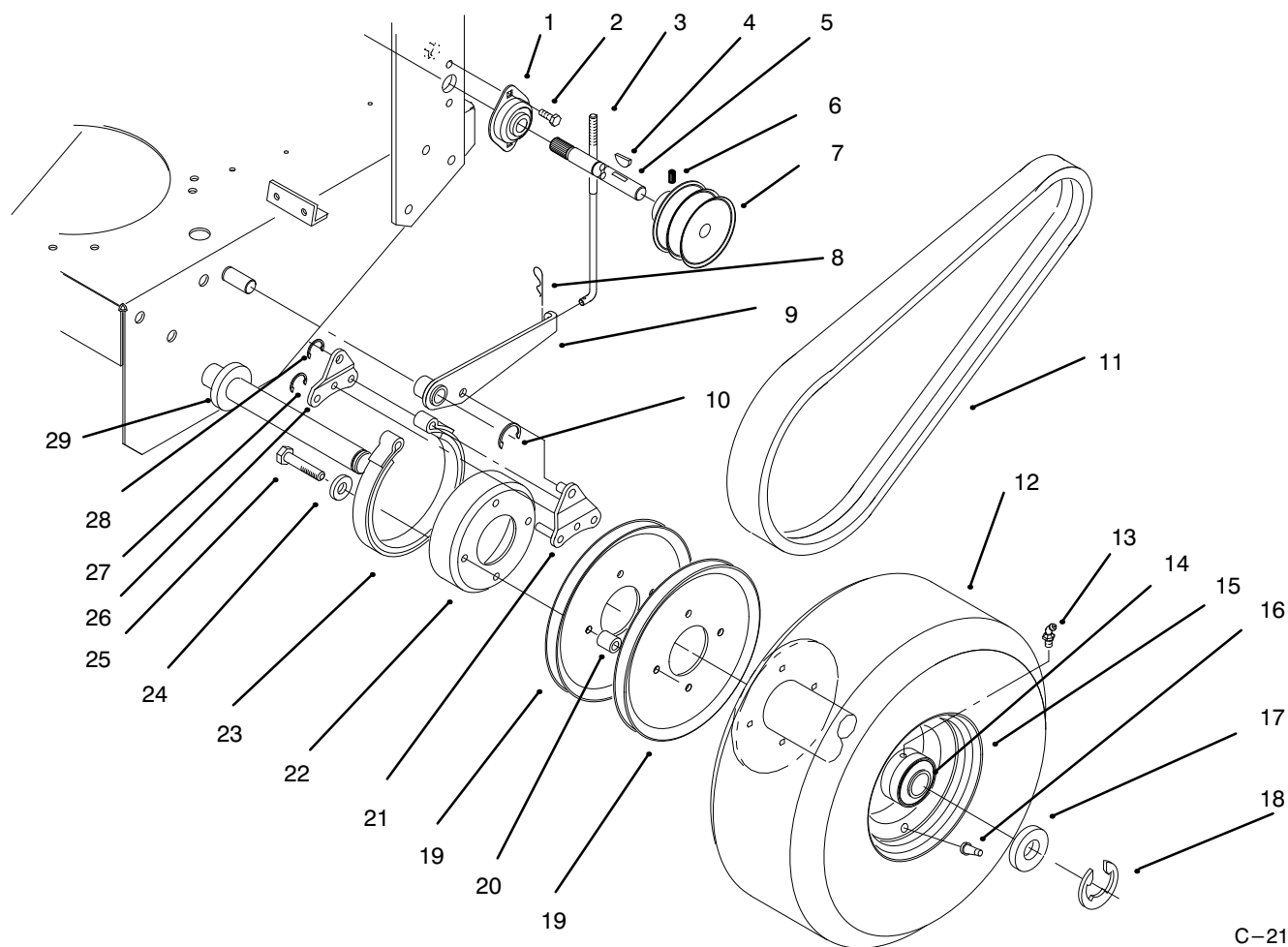


C-2152

TRANSMISSION, IDLER, DRIVE PULLEYS & DRIVE BELT

| Ref. No. | Part No. | Description | No. Used |
|----------|----------|---------------------|----------|
| 1 | 72-2190 | Mount - Shift Lever | 1 |
| 2 | 74-0320 | Lever - Shift | 1 |
| 3 | 7-5461 | Spacer | 1 |
| 4 | 329-10 | Screw - Hex. Hd. | 1 |
| 5 | 47-1970 | Grip - Engagement | 1 |
| 6 | 51-4220 | Guard - Coupler | 2 |
| 7 | 302-5 | Fitting - Grease | 2 |
| 8 | 98-0789 | Coupler | 1 |
| 9 | 3296-42 | Nut - Lock | 4 |
| 10 | 32120-64 | Ring - Retaining | 3 |
| 11 | 3245-1 | Screw - Socket Hd. | 1 |
| 12 | 26-9671 | Belt - Traction | 1 |
| 13 | 51-4190 | Pulley - Driven | 1 |
| 15 | 322-2 | Screw - Hex. Hd. | 4 |
| 16 | 3253-4 | Washer - Lock | 4 |

| Ref. No. | Part No. | Description | No. Used | |
|----------|----------|-------------------------------|--------------------|---|
| 17 | 98-0791 | Transmission | 1 | |
| 18 | 68-2190 | Spring - Extension | 18 | |
| 19 | 27-6230 | Bolt | 1 | |
| 20 | 3296-39 | Nut - Lock | 1 | |
| 21 | 82-4800 | Lever - Idler (Incl. Ref.#24) | 1 | |
| 22 | 62-4540 | Pulley - Idler | 1 | |
| 23 | 323-8 | Screw - Hex. Hd. | 1 | |
| 24 | 256-155 | Bushing | 2 | |
| 25 | 3296-6 | Nut | 1 | |
| 26 | 32144-14 | Screw - Hex. Hd. | 2 | |
| 27 | 93-7431 | Guard - Transmission Shaft | 1 | |
| 28 | 12-3270 | Screw - Hex. Hd. | 6 | |
| 29 | 93-7434 | Guard - Belt, L.H. | 1 | |
| | * | 93-7433 | Guard - Belt, R.H. | 1 |
| 30 | 3256-24 | Washer | 1 | |



C-2153

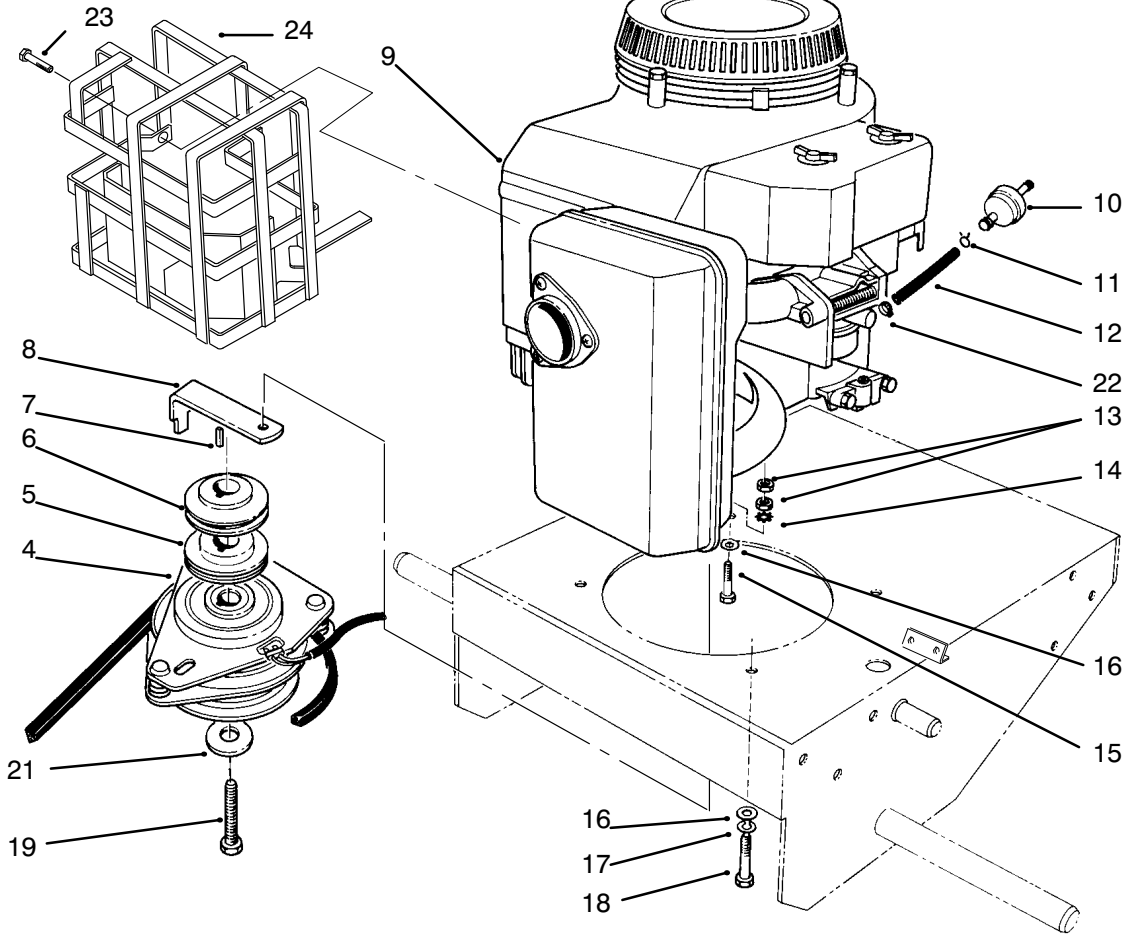
AXLE, BRAKE, WHEEL DRIVE AND BELTS

| Ref. No. | Part No. | Description | No. Used |
|----------|----------|---------------------------|----------|
| 1 | 51-4270 | Bearing - Shaft Extension | 2 |
| 2 | 321-4 | Screw - Hex. Hd. | 4 |
| 3 | 51-4580 | Rod - Brake | 2 |
| 4 | 3257-5 | Key - Woodruff | 3 |
| 5 | 98-0788 | Shaft - Extension R.H. | 1 |
| * | 98-0787 | Shaft - Extension L.H. | 1 |
| 6 | 3245-3 | Screw - Socket Hd. Set | 2 |
| 7 | 74-0480 | Pulley - Drive | 2 |
| 8 | 3290-307 | Pin - Cotter | 2 |
| 9 | 51-4610 | Brake Arm L.H. | 1 |
| * | 51-4600 | Brake Arm R.H. | 1 |
| 10 | 32151-40 | Ring - Retaining | 2 |
| 11 | 51-4290 | Belt - Drive | 2 |
| 12 | 231-111 | Tire | 2 |
| 13 | 302-11 | Fitting - Grease | 2 |
| 14 | 92-1746 | Bearing | 4 |

| Ref. No. | Part No. | Description | No. Used |
|----------|----------|---------------------|----------|
| 15 | 242-80 | Rim | 2 |
| 16 | 232-27 | Valve Stem | 2 |
| 17 | 10-8110 | Washer - Flat | A/R |
| 18 | 32151-91 | Ring - Retaining | 2 |
| 19 | 51-4160 | Pulley - Wheel | 4 |
| 20 | 51-4170 | Spacer - Pulley | 8 |
| 21 | 51-4650 | Link - Brake | 2 |
| 22 | 51-4180 | Drum - Brake | 2 |
| 23 | 51-4700 | Brake Band Assembly | 2 |
| 24 | 3253-4 | Washer - Lock | 8 |
| 25 | 322-7 | Screw - Hex. Hd. | 8 |
| 26 | 51-4660 | Plate - Link Brake | 2 |
| 27 | 32151-72 | Ring - Retaining | 4 |
| 28 | 32151-56 | Ring - Retaining | 2 |
| 29 | 51-4230 | Washer - Wheel | 2 |

*Not Illustrated

3319-699

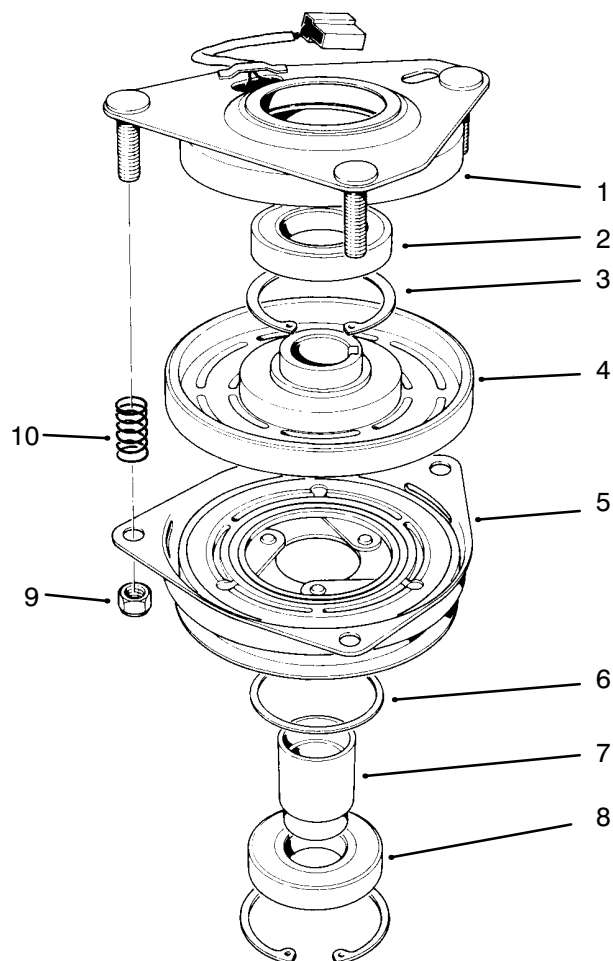


C-2099

ENGINE & CLUTCH ASSEMBLY

| Ref. No. | Part No. | Description | No. Used |
|----------|----------|---------------------------------------------|----------|
| 4 | 54-3200 | Clutch Brake Assembly | 1 |
| 5 | 74-0050 | Sheave - Lower Half | 1 |
| 6 | 74-0060 | Sheave - Upper Half | 1 |
| 7 | 92-5436 | Key | 1 |
| 8 | 51-4540 | Retainer - Clutch | 1 |
| 9 | | Engine - Kawasaki Model FB460V Type KS08 | 1 |
| 10 | 56-6360 | Fuel - Filter | 1 |
| 11 | 2412-98 | Clamp - Fuel Line | 2 |
| 12 | 47-2982 | Hose - Gas | 1 |
| 13 | 57-6390 | Nut | 2 |
| 14 | 3255-8 | Washer - External Tooth | 1 |
| 15 | 57-6370 | Screw - Hex. Hd. | 1 |

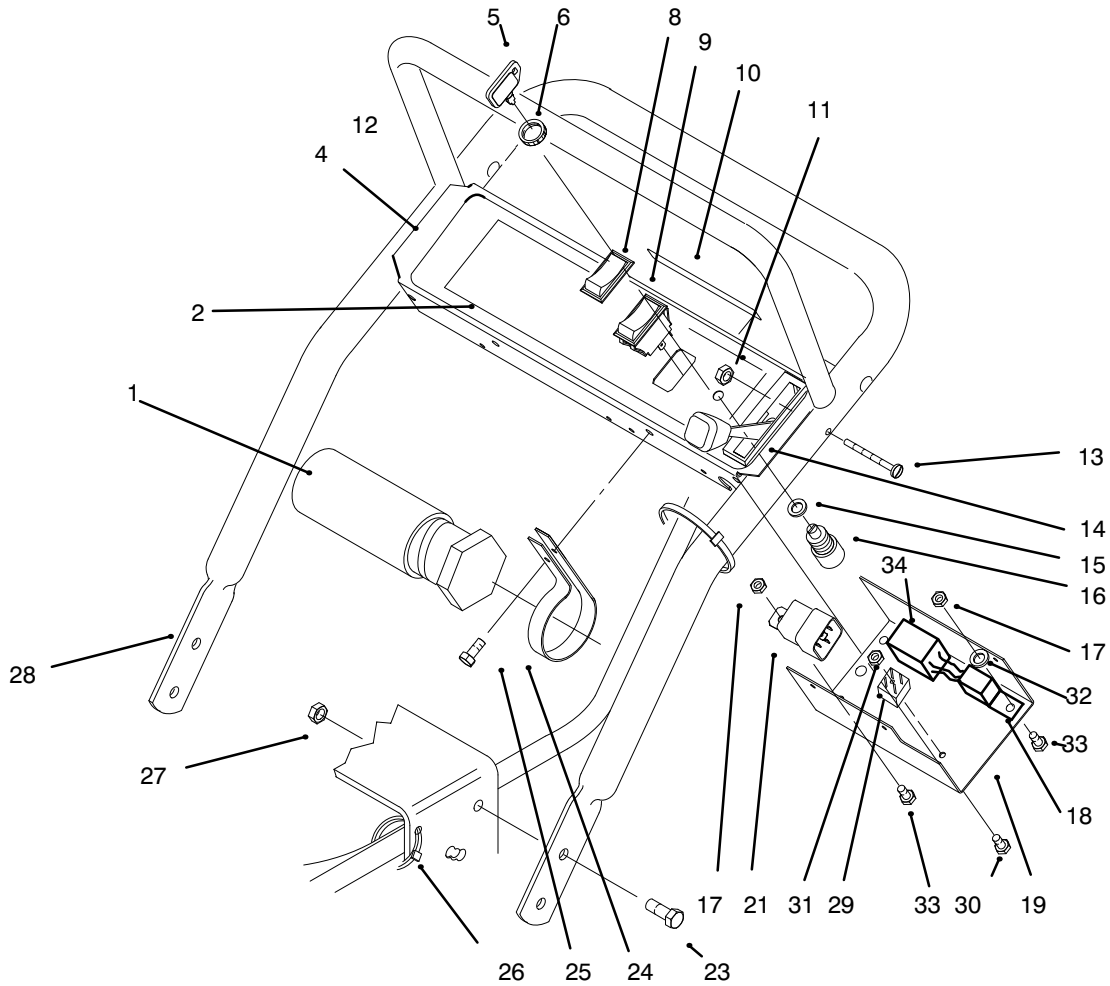
| Ref. No. | Part No. | Description | No. Used |
|----------|----------|--------------------------------------------------|----------|
| 16 | 3256-23 | Washer - Flat | 3 |
| 17 | 3253-4 | Washer - Lock | 3 |
| 18 | 57-6380 | Screw - Hex. Hd. | 3 |
| 19 | 57-6360 | Screw - Hex. Hd. | 1 |
| 21 | 112843 | Washer - Clutch | 1 |
| 22 | 2412-108 | Clamp - Hose | 1 |
| 23 | | Screw - Hex. Hd. (Engine) | |
| 24 | 94-1295 | Guard - Muffler Asm. | 1 |
| * | 54-2750 | V-Belt - Deck Drive (36" & 44" Cutting Units) | 1 |
| * | 55-7660 | V-Belt - Deck Drive (52" Cutting Unit) | 1 |



T-0080

CLUTCH ASSEMBLY NO. 54-3200

| Ref. No. | Part No. | Description | No. Used | Ref. No. | Part No. | Description | No. Used |
|----------|----------|-----------------------------------------------------------|----------|----------|----------|-------------------------|----------|
| 1 | 54-0230 | Field Assembly (Incl. Ref. # 2 & 3) | 1 | 6 | 44-8330 | Spacer - Pulley Bearing | 1 |
| 2 | 251-292 | Bearing - Field | 1 | 7 | 44-8340 | Collar - Bearing | 1 |
| 3 | 44-8310 | Ring - Retaining | 2 | 8 | 251-291 | Bearing - Pulley | 1 |
| 4 | 44-8360 | Field Coil, Rotor & Bearing Assembly (Incl. Ref. # 1) | 1 | 9 | 3296-5 | Nut - Lock | 3 |
| 5 | 55-7410 | Armature & Pulley Assembly (Incl. Ref. # 3, 6, 7, & 8) | 1 | 10 | 44-8320 | Spring | 3 |

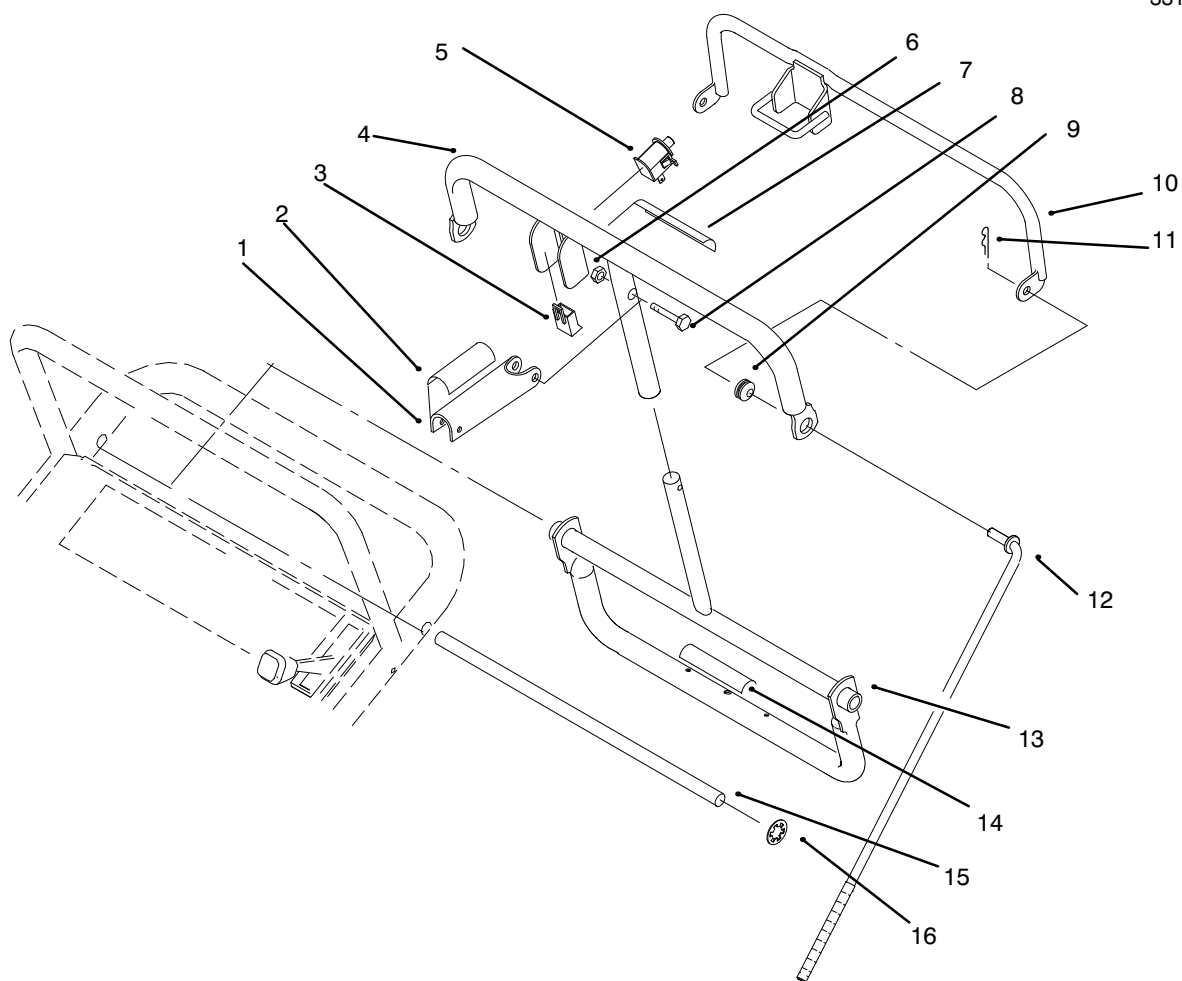


C-2155

HANDLE ASSEMBLY

| Ref. No. | Part No. | Description | No. Used |
|----------|----------|---------------------------------------------|----------|
| 1 | 74-0720 | Tube - Manual | 1 |
| 2 | 93-7295 | Decal - Proline | 1 |
| 4 | 82-2180 | Panel - Control | 1 |
| 5 | 63-8360 | Key | 2 |
| 6 | 218-461 | Nut | 1 |
| 8 | 82-3820 | Boot | 1 |
| 9 | 82-2300 | Switch - Clutch (Incl. Ref.#8) | 1 |
| 10 | 93-6657 | Decal - Danger | 1 |
| 11 | 3296-2 | Nut - Lock | 4 |
| 13 | 32105-14 | Screw - Hex. Hd. Machine | 4 |
| 14 | 74-0740 | Control - Throttle | 1 |
| 15 | 3254-5 | Washer - Lock | 1 |
| 16 | 29-5560 | Switch - Ignition (Incl. Ref. #5,6, &15) | 1 |
| 17 | 3296-42 | Nut - Hex | 3 |

| Ref. No. | Part No. | Description | No. Used |
|----------|----------|----------------------|----------|
| 18 | 86-7910 | Module - Interlock | 1 |
| 19 | 57-5811 | Panel - Bottom | 1 |
| 21 | 63-7590 | Relay | 1 |
| 23 | 3234-11 | Screw - Hex. Hd. | 4 |
| 24 | 2412-120 | "R"Clamp | 2 |
| 25 | 32144-19 | Screw - Self Tapping | 4 |
| 26 | 3290-378 | Cable Tie | 3 |
| 27 | 32128-21 | Nut - Lock | 4 |
| 28 | 67-6440 | Handle - Upper | 1 |
| 29 | 37-7600 | Bridge - Rectifier | 1 |
| 30 | 32105-13 | Screw | 1 |
| 31 | 3296-2 | Nut | 1 |
| 32 | 3255-7 | Washer | 1 |
| 33 | 321-2 | Screw | 2 |
| 34 | 94-5818 | Module | 1 |

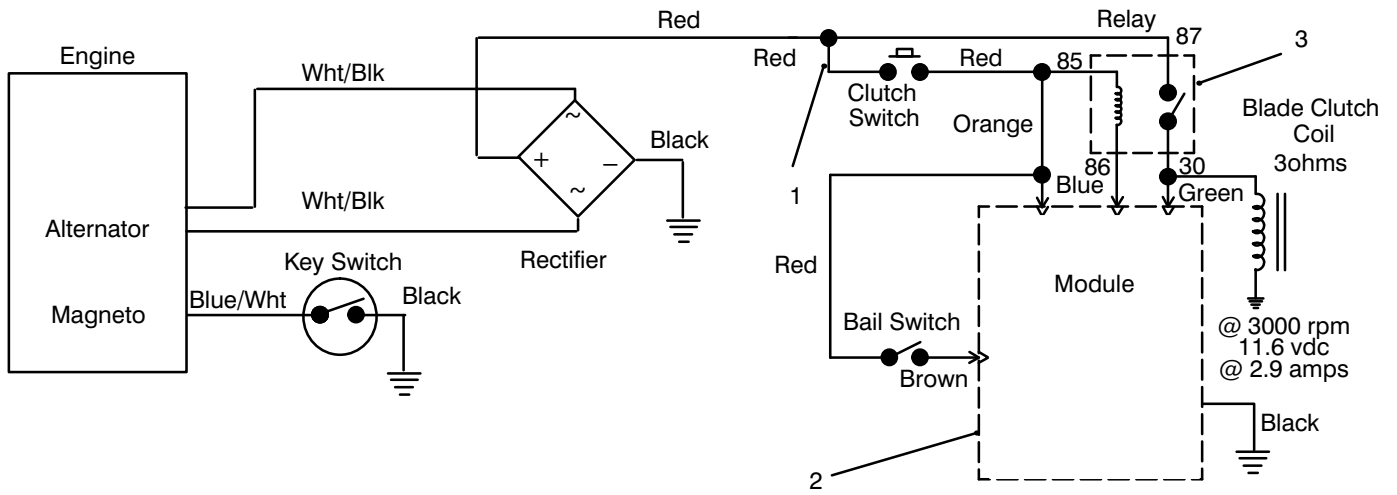


C-2156

HANDLE ASSEMBLY (Continued)

| Ref. No. | Part No. | Description | No. Used |
|----------|----------|--------------------------|----------|
| 1 | 51-4850 | Lever - Parking Brake | 1 |
| 2 | 93-7442 | Decal - Parking Brake | 1 |
| 3 | 218-595 | Connector - Body | 1 |
| 4 | 82-7690 | Bar - Control | 1 |
| 5 | 82-2190 | Switch - Bail | 1 |
| 6 | 3296-2 | Nut - Lock | 5 |
| 7 | 93-7298 | Decal - Control Bar | 1 |
| 8 | 32105-1 | Screw - Hex. Hd. Machine | 1 |

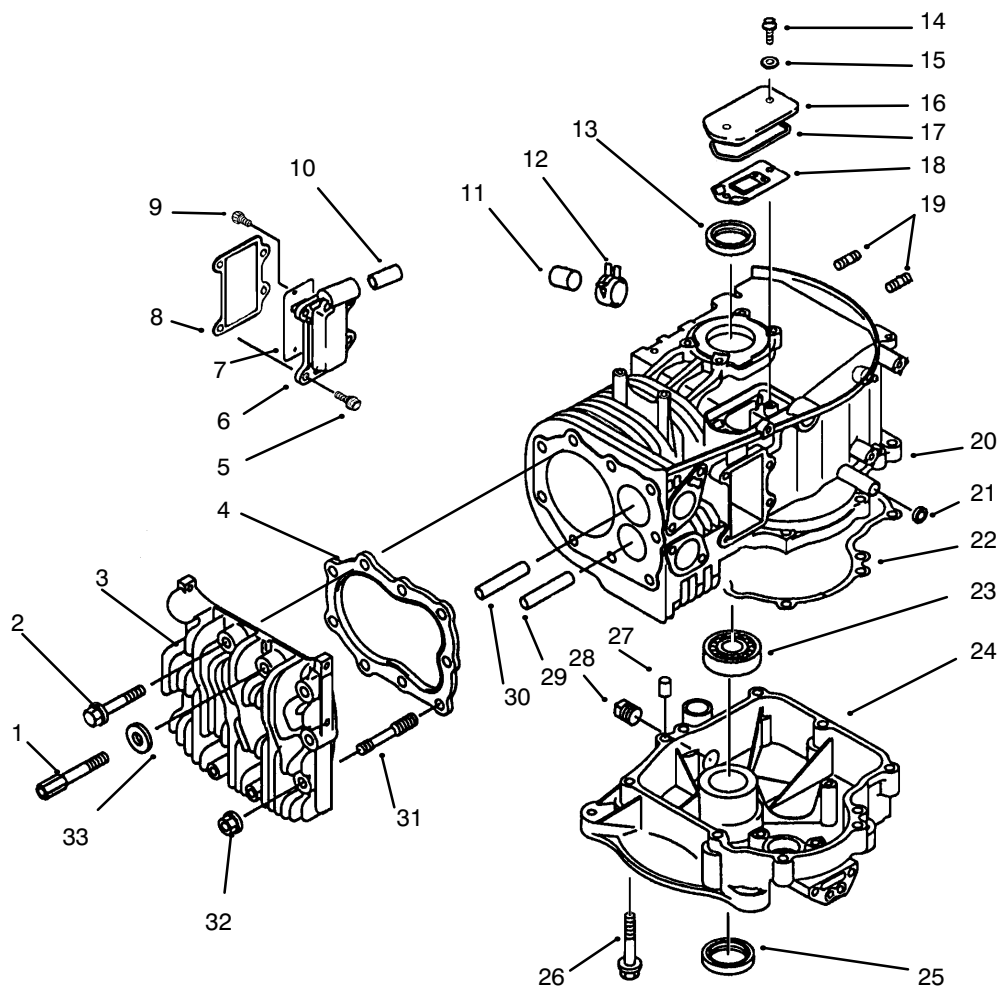
| Ref. No. | Part No. | Description | No. Used |
|----------|----------|------------------------|----------|
| 9 | 237-141 | Grommet - Rubber | 2 |
| 10 | 82-7680 | Bail Assembly | 1 |
| 11 | 3290-307 | Pin - Cotter | 2 |
| 12 | 82-7631 | Rod - Control | 2 |
| 13 | 74-0380 | Control - Pivot | 1 |
| 14 | 93-7299 | Decal - Reverse Handle | 1 |
| 15 | 74-0470 | Rod - Pivot | 1 |
| 16 | 32151-80 | Ring - Push On | 2 |



ELECTRIC SCHEMATIC

| Ref. No. | Part No. | Description | No. Used |
|----------|----------|--------------------|----------|
| 1 | 82-2240 | Wire Harness | 1 |
| 2 | 86-7910 | Module - Interlock | 1 |

| Ref. No. | Part No. | Description | No. Used |
|----------|----------|-------------|----------|
| 3 | 63-7590 | Relay | 1 |



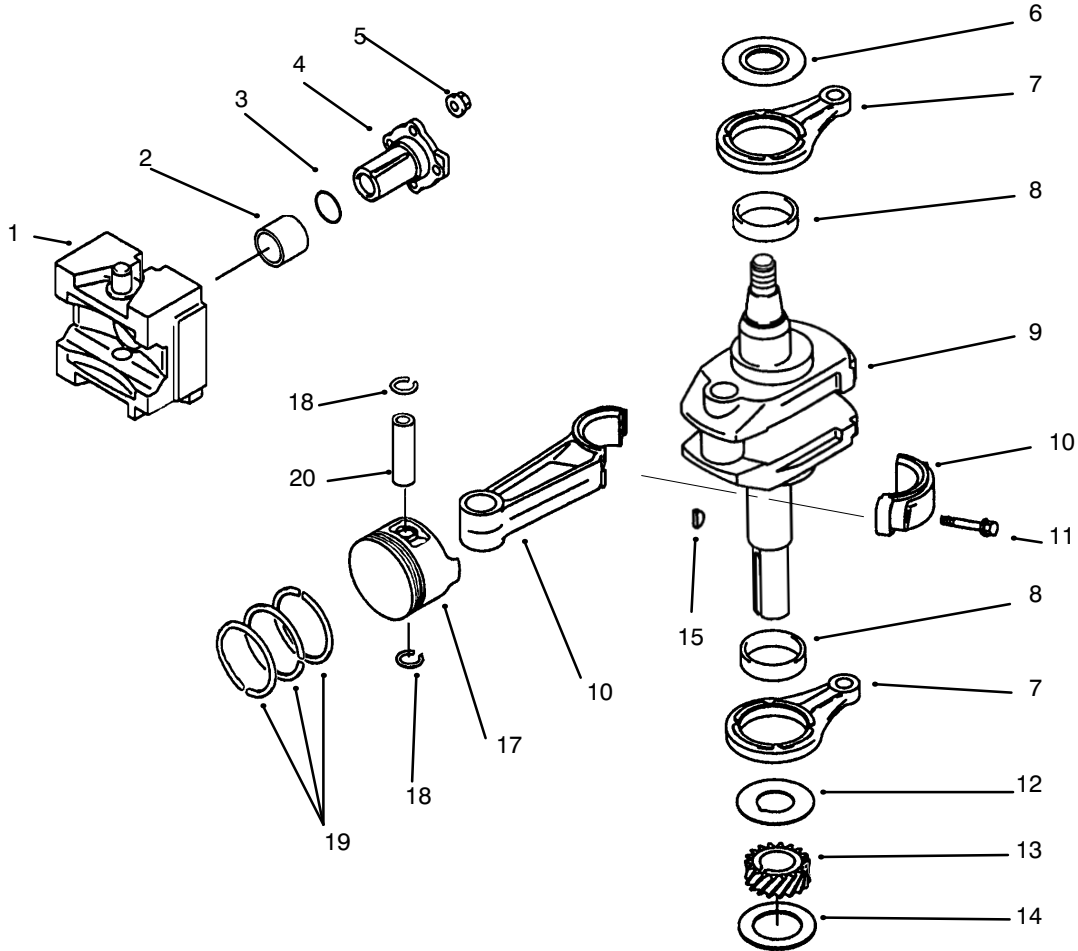
CRANKCASE

| Ref. No. | Part No. | Description | No. Used |
|----------|------------|-------------------------|----------|
| 1 | 92002-2258 | Bolt | 2 |
| 2 | 130G1055 | Bolt - Flanged | 4 |
| 3 | 11001-2151 | Head - Cylinder | 1 |
| 4 | 11004-2091 | Gasket - Head | 1 |
| 5 | 130G0616 | Bolt - Flanged | 4 |
| 6 | 49108-2011 | Cover - Valve Chamber | 1 |
| 7 | 14025-2143 | Cover | 1 |
| 8 | 11060-2059 | Gasket | 1 |
| 9 | 92009-2307 | Screw | 2 |
| 10 | 92059-2142 | Tube - 10 x 14 x 29-1/2 | 1 |
| 11 | 92066-2096 | Plug | 1 |
| 12 | 92170-2088 | Clamp | 1 |
| 13 | 92049-2096 | Seal - Oil | 1 |
| 14 | 92002-2087 | Bolt | 2 |
| 15 | 11060-2323 | Gasket | 2 |
| 16 | 14025-2040 | Cover - Breather | 1 |
| 17 | 11009-2339 | Gasket - Cover | 1 |

| Ref. No. | Part No. | Description | No. Used |
|----------|------------|----------------------------------------------|----------|
| 18 | 14069-2062 | Breather | 1 |
| 19 | 92004-2083 | Stud - 6 x 14 | 4 |
| 20 | 49120-6108 | Crankcase - Complete (Incl. Ref. #29, 30) | 1 |
| 21 | 92049-2097 | Seal - Oil | 1 |
| 22 | 11060-2015 | Gasket - Crankcase | 1 |
| 23 | 601A6207 | Bearing - Ball | 1 |
| 24 | 49015-6176 | Cover - Crankcase | 1 |
| 25 | 92049-2227 | Seal - Oil | 1 |
| 26 | 130G0845 | Bolt - Flanged | 8 |
| 27 | 92043-1263 | Pin | 2 |
| 28 | 92066-2097 | Plug | 1 |
| 29 | 49002-2071 | Guide - Valve, Exhaust | 1 |
| 30 | 49002-2070 | Guide - Valve, Intake | 1 |
| 31 | 92004-2082 | Stud | 3 |
| 32 | 92015-2115 | Nut - 10 MM | 3 |
| 33 | 410B1000 | W-Plain-S | 2 |

Kawasaki Model FB460V Type KS08

* Order Parts from Kawasaki



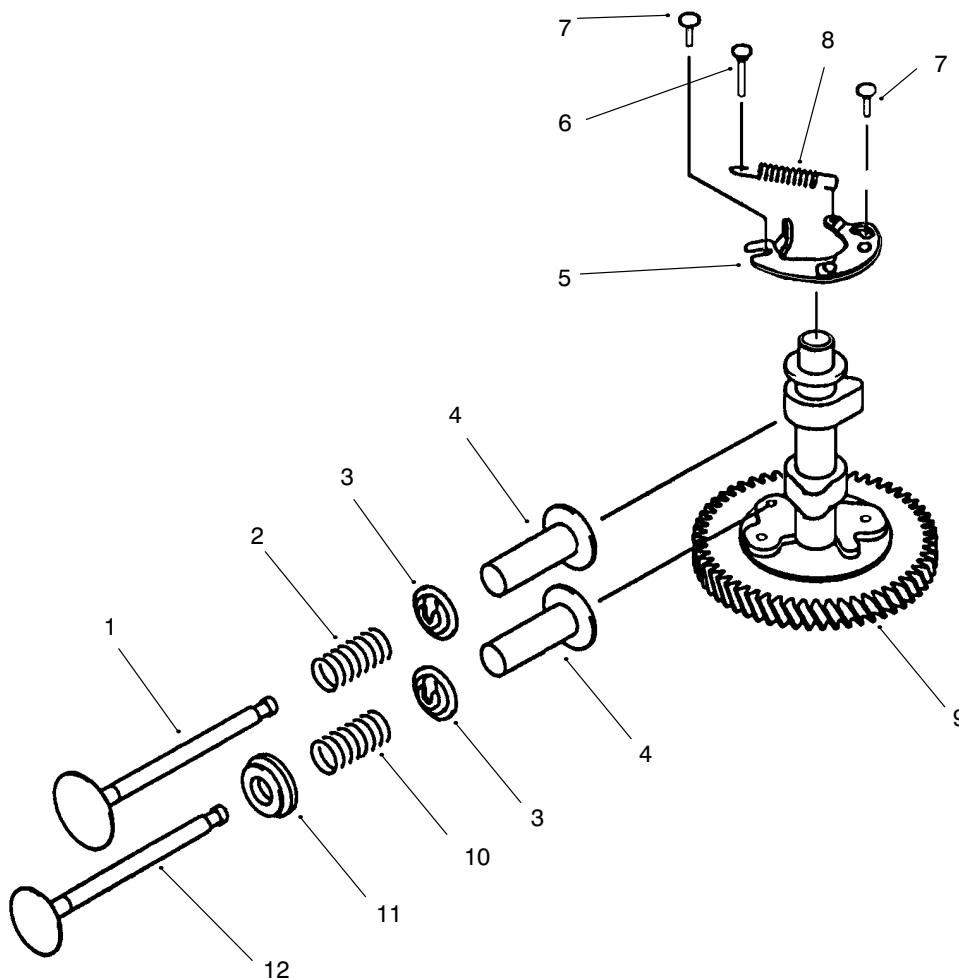
PISTON / CRANKSHAFT

| Ref. No. | Part No. | Description | No. Used |
|----------|------------|-----------------------------------------------|----------|
| 1 | 13042-6006 | Weight (Incl. Ref. # 2) | 1 |
| 2 | 92141-2097 | Bearing - Plane | 1 |
| 3 | 92055-2072 | O-Ring | 1 |
| 4 | 13107-2253 | Shaft | 1 |
| 5 | 92015-1193 | Nut | 4 |
| 6 | 92026-2164 | Spacer | 1 |
| 7 | 46102-6007 | Rod (Incl. Ref. #8) | 2 |
| 8 | 92141-2108 | Bearing - Plane | 2 |
| 9 | 49119-2177 | Crankshaft - Assembly | 1 |
| 10 | 13251-6005 | Rod / Cap Asm (Incl. Ref. #11) | 1 |
| | 13251-6007 | Rod / Cap Asm U/S=0.50 (Incl. Ref. #11) | A/R |
| 11 | 92150-2193 | Bolt | 2 |
| 12 | 92026-2156 | Spacer | 1 |
| 13 | 59056-2105 | Gear - Helical | 1 |
| 14 | 92025-2145 | Shim, T=1.18 | A/R |
| | 92025-2146 | Shim, T=1.25 | A/R |

| Ref. No. | Part No. | Description | No. Used |
|----------|------------|---------------------------|----------|
| | 92025-2147 | Shim, T=1.32 | A/R |
| | 92025-2148 | Shim, T=1.39 | A/R |
| | 92025-2149 | Shim, T=1.46 | A/R |
| | 92025-2150 | Shim, T=1.53 | A/R |
| | 92025-2151 | Shim, T=1.60 | A/R |
| | 92025-2152 | Shim, T=1.67 | A/R |
| | 92025-2153 | Shim, T=1.74 | A/R |
| | 92180-2015 | Shim, T=1.11 | A/R |
| | 92180-2016 | Shim, T=1.81 | A/R |
| 15 | 92038-2094 | Key | 1 |
| 17 | 13001-2084 | Piston - Engine | 1 |
| | 13029-2019 | Piston - Engine L 0.25 | A/R |
| | 13029-2020 | Piston - Engine L 0.50 | A/R |
| 18 | 92033-2066 | Ring - Snap | |
| 19 | 13008-6001 | Ring - Set, Piston | 1 |
| * | 13008-6002 | Ring - Set, Piston L 0.25 | A/R |
| * | 13008-6003 | Ring - Set, Piston L 0.50 | A/R |
| 20 | 13002-2066 | Pin - Piston | 1 |

Kawasaki Model FB460V Type KS08

* Order Parts from Kawasaki

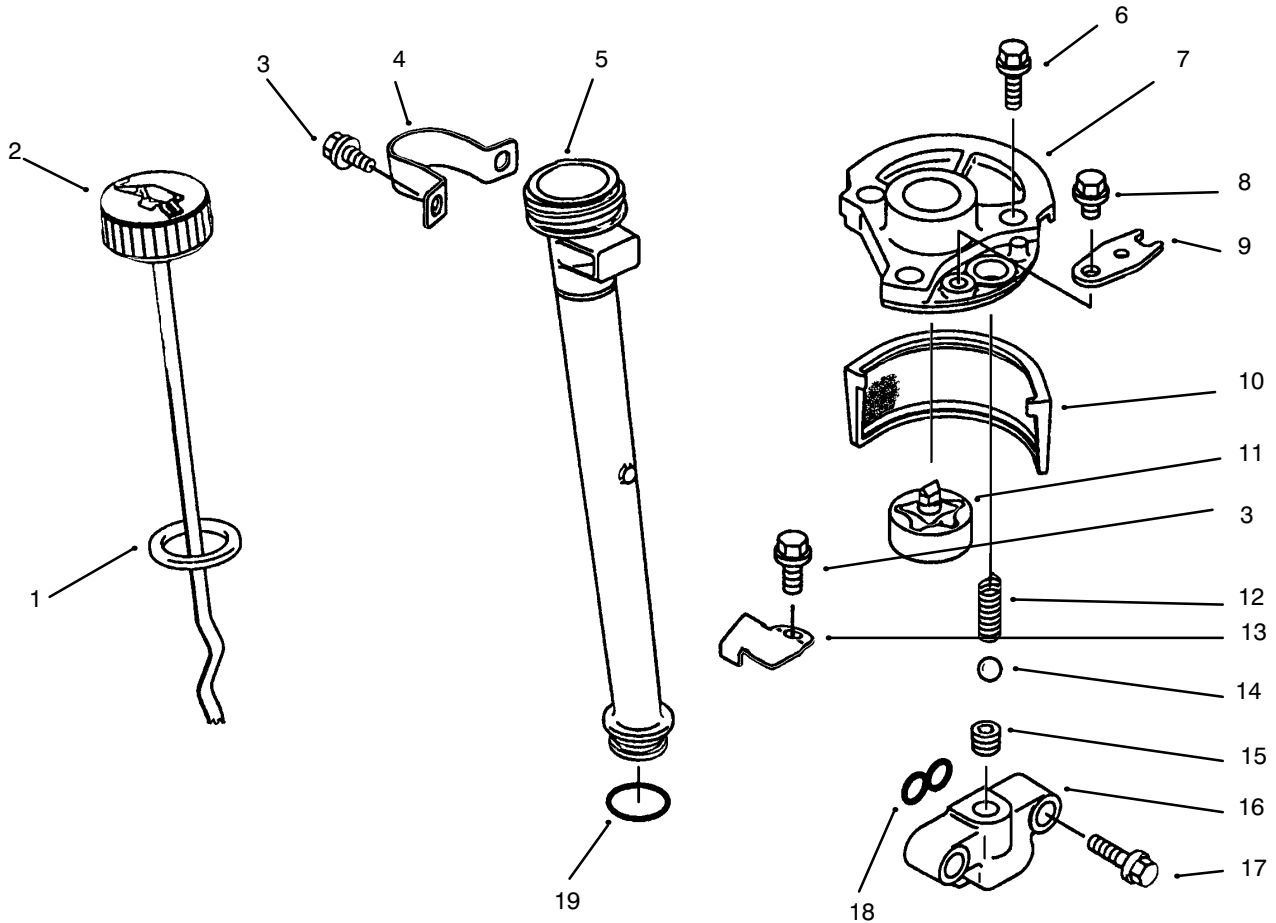


VALVE / CAMSHAFT

| Ref. No. | Part No. | Description | No. Used |
|----------|------------|-----------------------|----------|
| 1 | 12004-2076 | Valve - Intake | 1 |
| 2 | 49078-2059 | Spring - Engine Valve | 1 |
| 3 | 39108-2054 | Retainer - Spring | 2 |
| 4 | 12032-2058 | Tappet | 2 |
| 5 | 21118-2068 | Decompressor | 1 |
| 6 | 92043-2167 | Pin | 1 |
| 7 | 92043-2113 | Pin | 2 |

| Ref. No. | Part No. | Description | No. Used |
|----------|------------|------------------------------------------|----------|
| 8 | 92144-2171 | Spring | 1 |
| 9 | 49118-2134 | Camshaft - Complete (Incl. Ref. #5-8) | 1 |
| 10 | 49078-2058 | Spring - Engine Valve | 1 |
| 11 | 12039-2052 | Rotator | 1 |
| 12 | 12005-2066 | Valve - Exhaust | 1 |

Kawasaki Model FB460V Type KS08
* Order Parts from Kawasaki



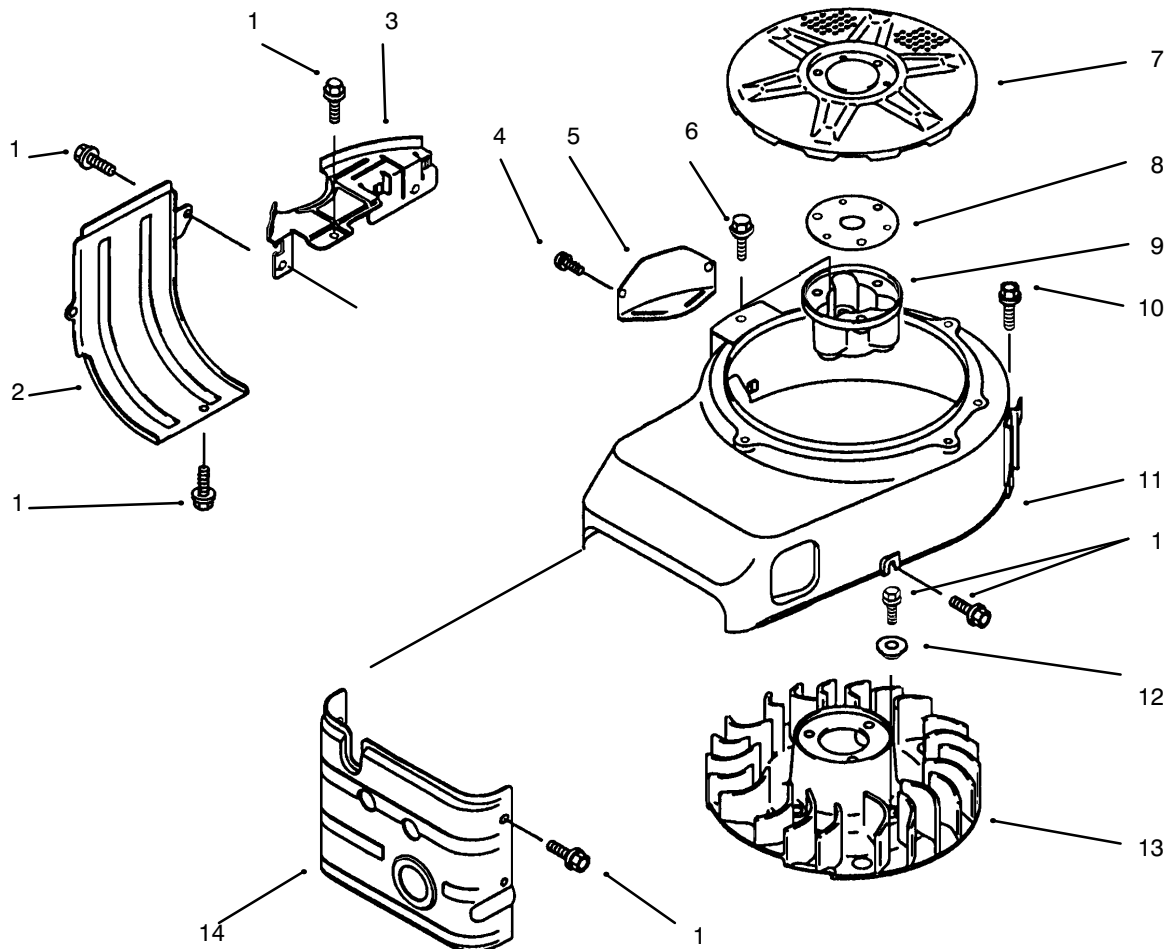
LUBRICATION EQUIPMENT

| Ref. No. | Part No. | Description | No. Used |
|----------|---------------|--------------------|----------|
| 1 | 11009-2346 | Gasket - Oil Gauge | 1 |
| 2 | 52005-2058 | Gauge - Oil | 1 |
| 3 | 130B0508 | Bolt - Flanged | 3 |
| 4 | 92170-2014-9H | Clamp | 1 |
| 5 | 59231-2059 | Filler | 1 |
| 6 | 130G0825 | Bolt - Flanged | 3 |
| 7 | 16142-6001 | Cover - Pump | 1 |
| 8 | 130B0610 | Bolt - Flanged | 1 |
| 9 | 13270-2054 | Plate | 1 |
| 10 | 49065-2056 | Filter - Oil | 1 |

| Ref. No. | Part No. | Description | No. Used |
|----------|------------|----------------------|----------|
| 11 | 16082-2057 | Pump - Assembly, Oil | 1 |
| 12 | 92081-2216 | Spring | 1 |
| 13 | 13169-2359 | Plate | 1 |
| 14 | 600A1000 | Ball - Steel | 1 |
| 15 | 92066-2211 | Plug | 1 |
| 16 | 14025-2145 | Cover | 1 |
| 17 | 130B0830 | Bolt - Flanged | 2 |
| 18 | 92055-2063 | O-Ring | 1 |
| 19 | 670D2016 | O-Ring | 1 |

Kawasaki Model FB460V Type KS08

* Order Parts from Kawasaki

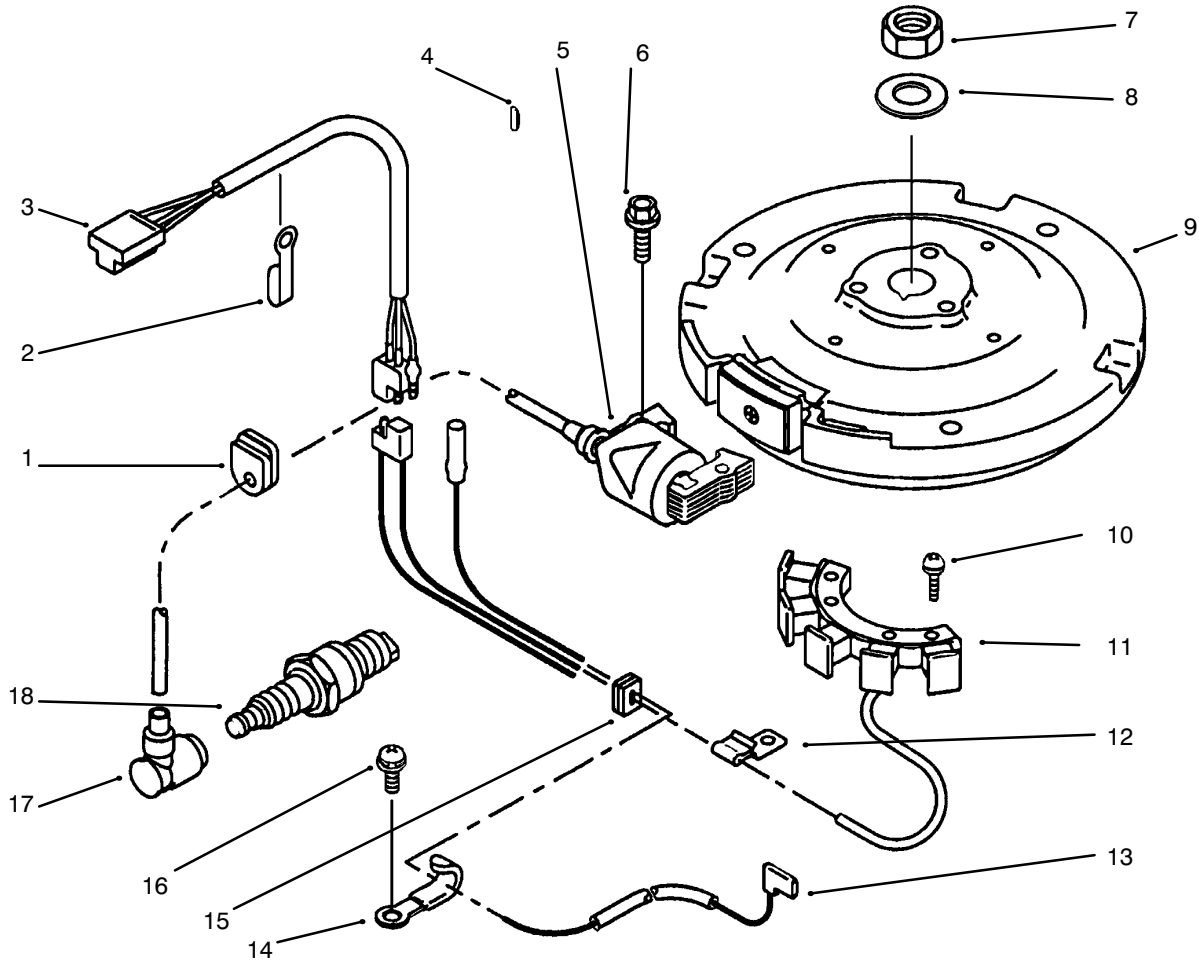


COOLING EQUIPMENT

| Ref. No. | Part No. | Description | No. Used |
|----------|---------------|-----------------|----------|
| 1 | 130G0610 | Bolt – Flanged | 9 |
| 2 | 49089-2199-9H | Shroud – Engine | 1 |
| 3 | 59066-2295-9H | Housing – Fan | 1 |
| 4 | 234B0408 | Screw – Pan–WSP | 2 |
| 5 | 14024-2038-9H | Cover | 1 |
| 6 | 130B0820 | Bolt – Flanged | 3 |
| 7 | 14037-2104-9H | Screen | 1 |

| Ref. No. | Part No. | Description | No. Used |
|----------|---------------|-----------------|----------|
| 8 | 92025-2003 | Shim, T=1.20 | AR |
| 9 | 11044-2084 | Bracket | 1 |
| 10 | 130G0614 | Bolt – Flanged | 6 |
| 11 | 59066-2677-9H | Housing – Fan | 1 |
| 12 | 92143-2179 | Collar | 4 |
| 13 | 59041-2081 | Fan | 1 |
| 14 | 49089-2181-9H | Shroud – Engine | 1 |

Kawasaki Model FB460V Type KS08
 * Order Parts from Kawasaki



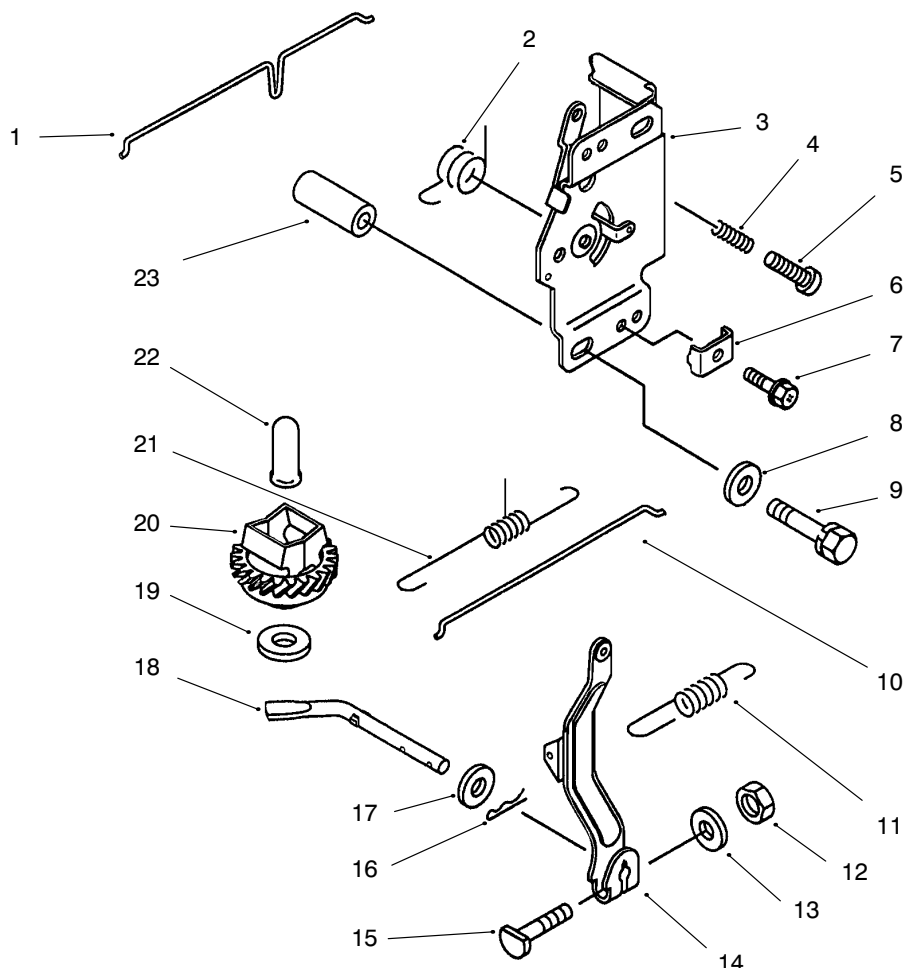
ELECTRIC EQUIPMENT

| Ref. No. | Part No. | Description | No. Used |
|----------|------------|-----------------|----------|
| 1 | 92071-2100 | Grommet | 1 |
| 2 | 92037-2063 | Clamp | 1 |
| 3 | 26001-2113 | Harness | 1 |
| 4 | 92038-2094 | Key | 1 |
| 5 | 21121-2086 | Coil - Ignition | 1 |
| 6 | 130B0520 | Bolt - Flanged | 2 |
| 7 | 314G1800 | Nut - Hex, Fine | 1 |
| 8 | 92022-2178 | Washer | 1 |
| 9 | 21194-2323 | Flywheel | 1 |

| Ref. No. | Part No. | Description | No. Used |
|----------|------------|--------------------|----------|
| 10 | 224B0620 | Screw - Pan | 2 |
| 11 | 59031-2106 | Coil - Charging | 1 |
| 12 | 92037-2158 | Clamp | 1 |
| 13 | 26011-2329 | Wire - Lead | 1 |
| 14 | 92170-2029 | Clamp | 1 |
| 15 | 92071-2099 | Grommet | 1 |
| 16 | 234B0408 | Screw - Pan | 1 |
| 17 | 21130-2060 | Cap - Spark Plug | 1 |
| 18 | 92070-2101 | Plug - Spark, RCJ8 | 1 |

Kawasaki Model FB460V Type KS08

* Order Parts from Kawasaki

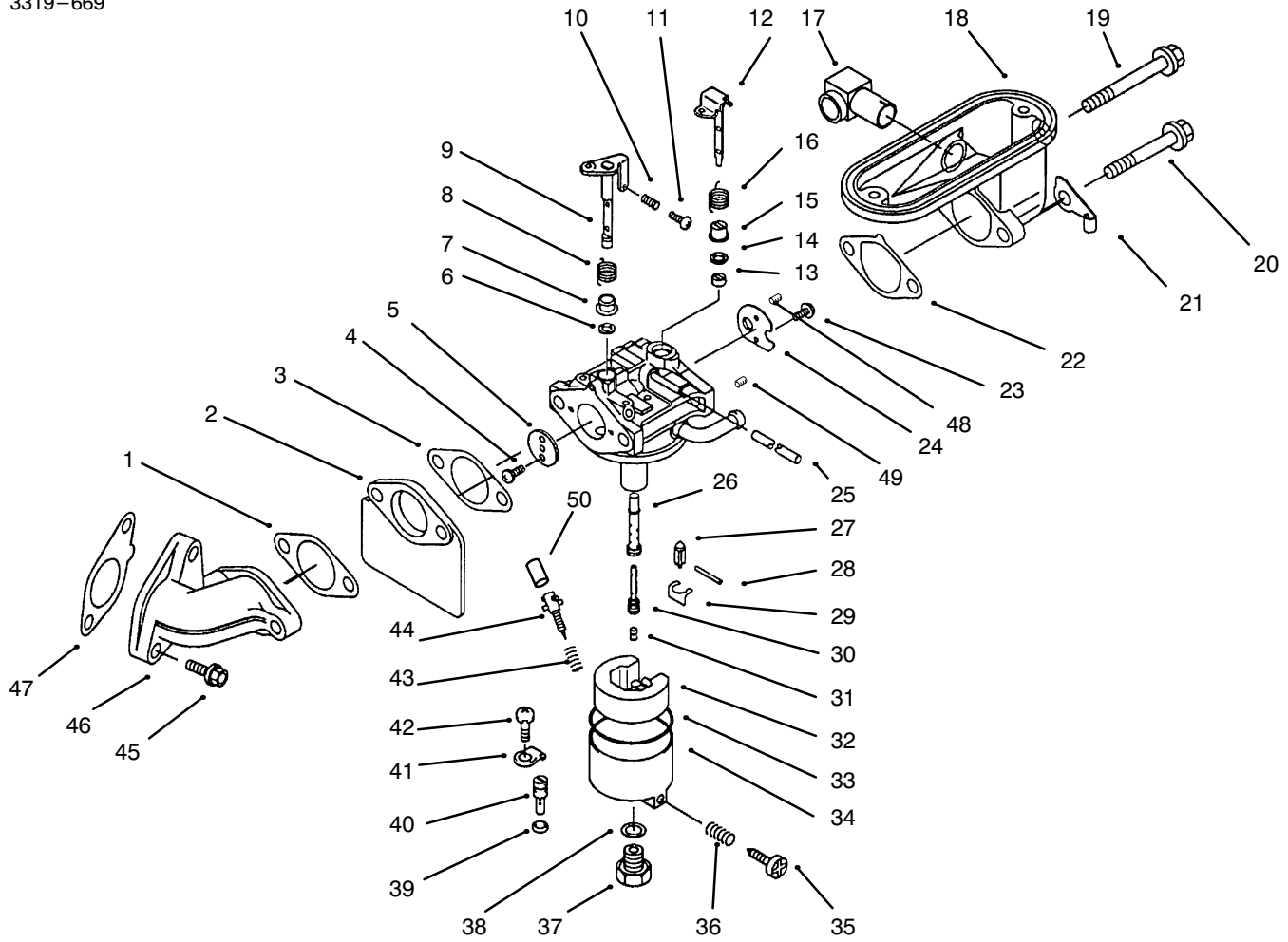


CONTROL EQUIPMENT

| Ref. No. | Part No. | Description | No. Used | Ref. No. | Part No. | Description | No. Used |
|----------|------------|--------------------------------------------------|----------|----------|------------|---------------------|----------|
| 1 | 16169-2126 | Link - Choke | 1 | 12 | 311B0600 | Nut - Hex | 1 |
| 2 | 92081-2316 | Spring | 1 | 13 | 411B0600 | Washer - Plain | 1 |
| 3 | 49113-2067 | Panel - Comp. Control (Incl. Ref. # 2, & 4-7) | 1 | 14 | 21187-2052 | Arm - Assembly | 1 |
| 4 | 92144-2266 | Spring | 1 | 15 | 92002-2269 | Bolt | 1 |
| 5 | 214B0425 | Screw - Pan | 1 | 16 | 554A0600 | Pin - Snap | 1 |
| 6 | 92037-2020 | Clamp | 1 | 17 | 92200-2029 | Washer | 1 |
| 7 | 92150-2182 | Bolt - 5 x 8 | 1 | 18 | 39003-2072 | Arm - Pivot | 1 |
| 8 | 92200-2070 | Washer | 2 | 19 | 92200-2036 | Washer | 1 |
| 9 | 180B0650 | Bolt - Upset - Ws | 2 | 20 | 49110-2067 | Governor - Assembly | 1 |
| 10 | 16171-2083 | Link | 1 | 21 | 92081-2213 | Spring | 1 |
| 11 | 39129-2010 | Spring - Governor | 1 | 22 | 42036-2060 | Sleeve | 1 |
| | | | | 23 | 92027-2071 | Collar | 2 |

Kawasaki Model FB460V Type KS08

* Order Parts from Kawasaki

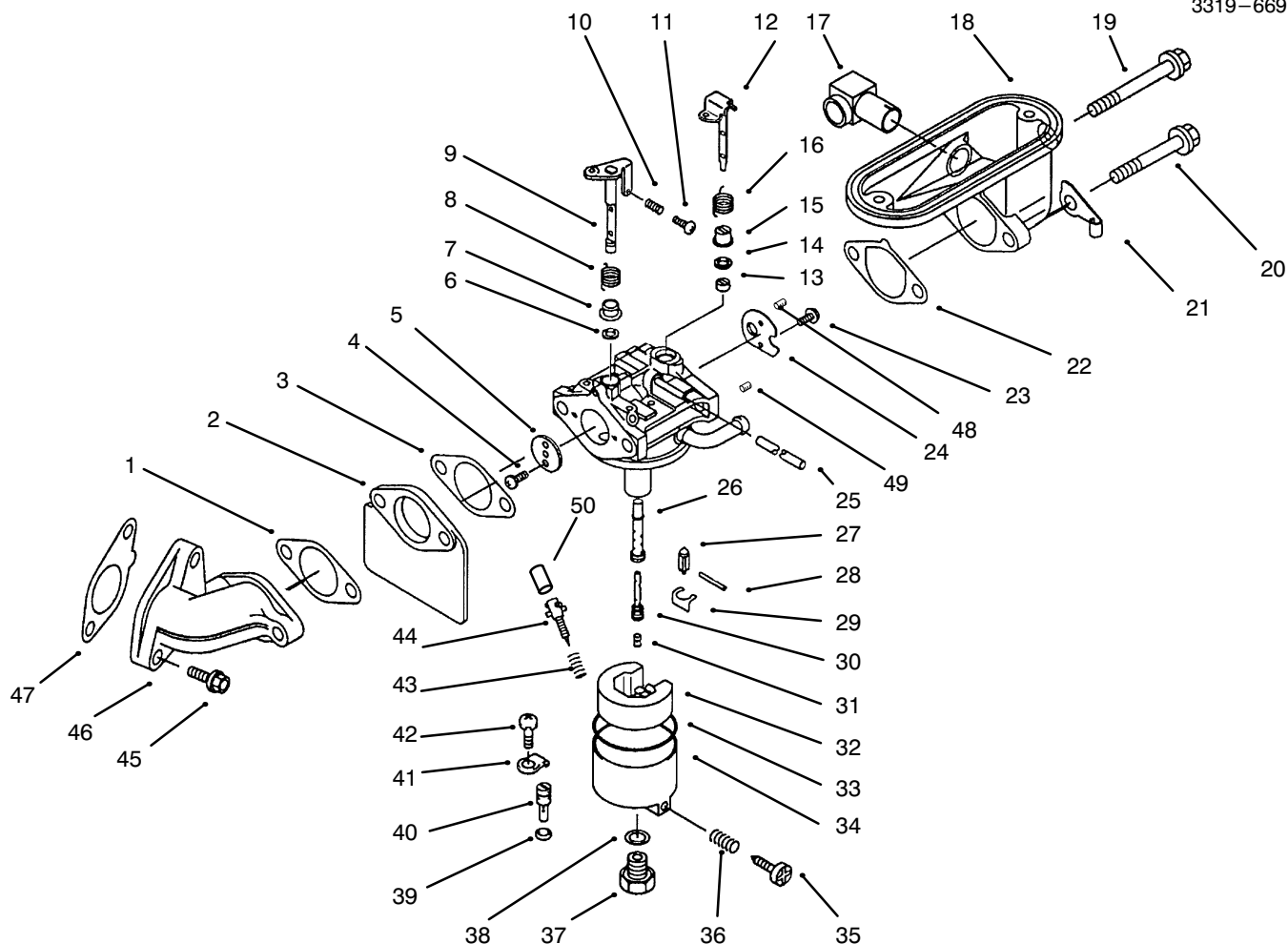


CARBURETOR

| Ref. No. | Part No. | Description | No. Used |
|----------|------------|------------------------|----------|
| 1 | 11060-2338 | Gasket - Intake Pipe | 1 |
| 2 | 16073-2091 | Insulator | 1 |
| 3 | 11060-2339 | Gasket - Carburetor | 2 |
| 4 | 92009-2080 | Screw | 2 |
| 5 | 16025-2141 | Valve - Throttle, #110 | 1 |
| 6 | 92093-2082 | Seal | 1 |
| 7 | 92027-2025 | Collar | 1 |
| 8 | 92081-2077 | Spring | 1 |
| 9 | 16041-2009 | Shaft - Throttle | 1 |
| 10 | 92081-2046 | Spring | 1 |
| 11 | 92009-2079 | Screw | 1 |
| 12 | 16041-2010 | Shaft - Choke | 1 |

| Ref. No. | Part No. | Description | No. Used |
|----------|------------|----------------|----------|
| 13 | 92027-2003 | Collar | 1 |
| 14 | 92093-2069 | Seal | 1 |
| 15 | 92143-2142 | Collar | 1 |
| 16 | 92144-2160 | Spring | 1 |
| 17 | 59071-2062 | Joint | 1 |
| 18 | 16060-2108 | Pipe - Intake | 1 |
| 19 | 92002-2254 | Bolt - 8 x 110 | 1 |
| 20 | 92002-2253 | Bolt - 8 x 92 | 1 |
| 21 | 92170-2019 | Clamp | 1 |
| 22 | 11060-2338 | Gasket | 1 |
| 23 | 92009-2081 | Screw | 2 |
| 24 | 16126-2206 | Valve - Choke | 1 |

Kawasaki Model FB460V Type KS08
 * Order Parts from Kawasaki

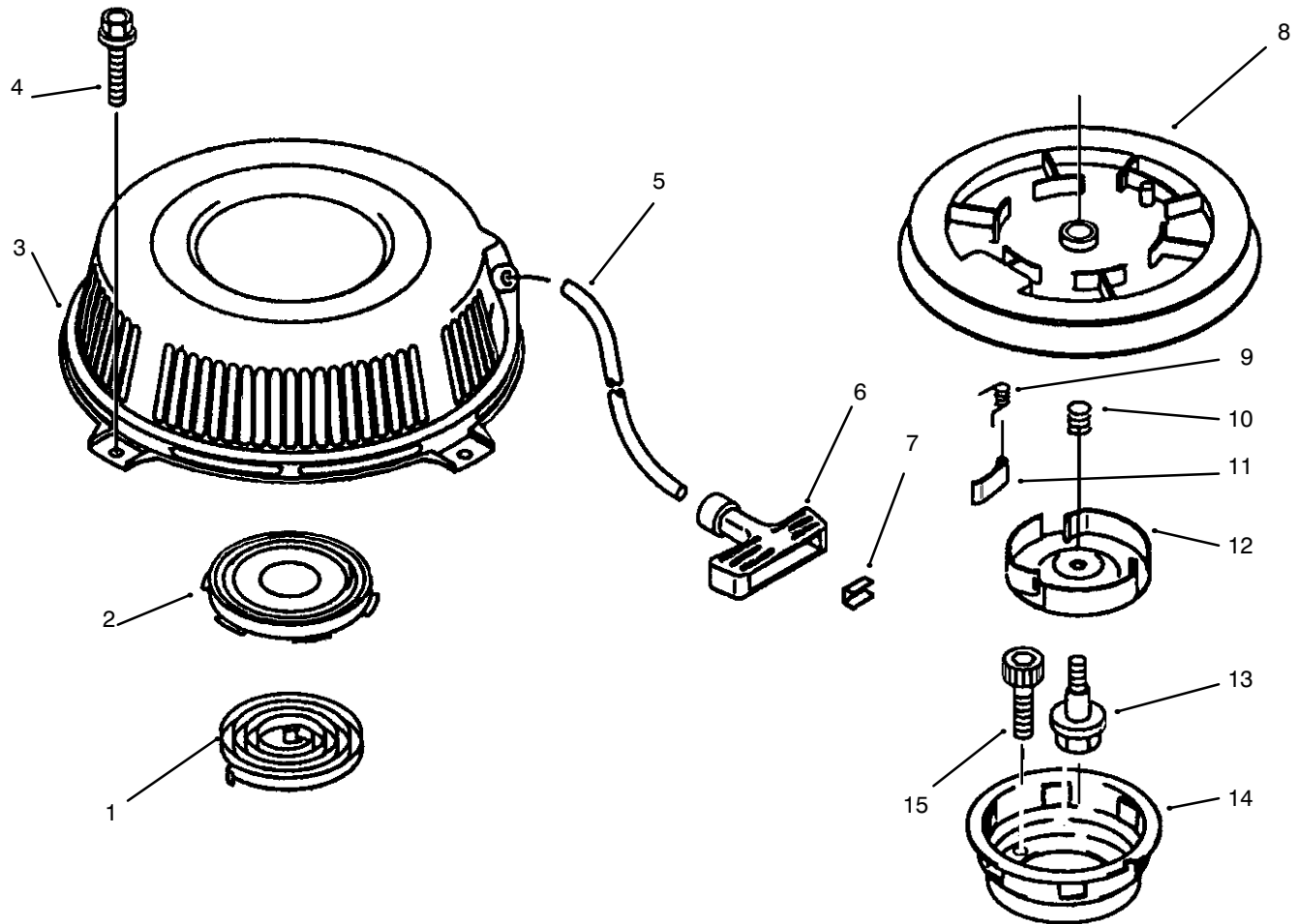


CARBURETOR (Continued)

| Ref. No. | Part No. | Description | No. Used | Ref. No. | Part No. | Description | No. Used |
|----------|-------------|-----------------------------------------|----------|----------|------------|---------------------------------------------------------|----------|
| 25 | 92059-2266 | Tube - 3 x 5 x 110 | 1 | 39 | 16038-024 | Gasket | 1 |
| 26 | 49121-2207 | Nozzle - Main | 1 | 40 | 92064-2108 | Jet - Pilot | 1 |
| 27 | 16030-2073 | Valve - Float | 1 | 41 | 13183-2252 | Plate | 1 |
| 28 | 92043-2006 | Pin | 1 | 42 | 92009-2244 | Screw | 1 |
| 29 | 92033-2067 | Ring - Snap | 1 | 43 | 92081-2009 | Spring | 1 |
| 30 | 49123-2078 | Holder - Main Jet | 1 | 44 | 16014-2076 | Screw - Pilot Air | 1 |
| 31 | 92063-2294 | Jet - Main | 1 | 45 | 130G0825 | Bolt - Flanged | 2 |
| 32 | 16031-2066 | Float | 1 | 46 | 16060-2109 | Pipe - Intake | 1 |
| 33 | 11009-2024 | Gasket | 1 | 47 | 11060-2337 | Gasket - Intake Pipe | 1 |
| 34 | 16020-2109 | Chamber - Float (Incl. Ref. #35, 36) | 1 | 48 | 16035-2063 | Jet-Air #0.9 | 1 |
| 35 | 92009-2015 | Screw | 1 | 49 | 16035-2051 | Jet-Air #1.4 | 1 |
| 36 | 92081-2009 | Spring | 1 | 50 | 39076-2053 | Limiter | 1 |
| 37 | 92150-2146 | Bolt | 1 | * | 15003-2467 | Carburetor - Assembly (Incl. Ref. # 1-16 & 22-44) | 1 |
| 38 | 11009A-2025 | Gasket | 1 | | | | |

Kawasaki Model FB460V Type KS08

* Order Parts from Kawasaki



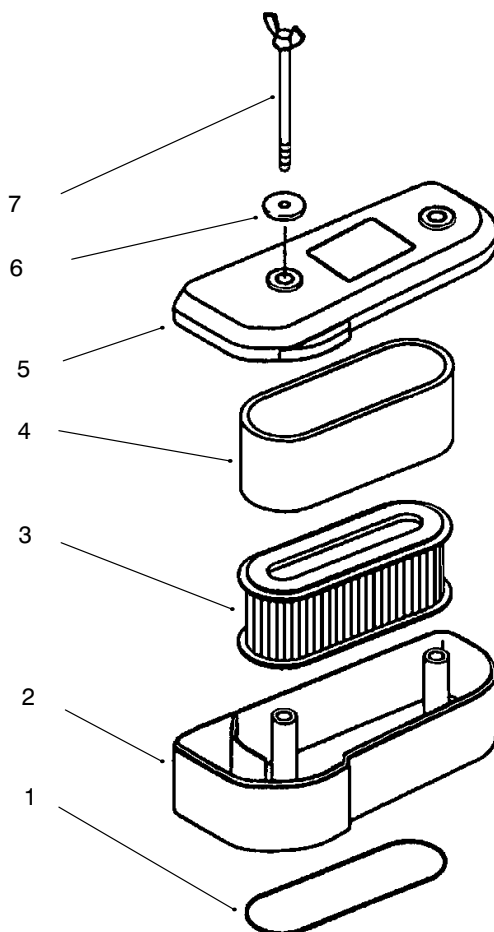
STARTER

| Ref. No. | Part No. | Description | No. Used |
|----------|---------------|-----------------------|----------|
| 1 | 92081-2267 | Spring - Recoil | 1 |
| 2 | 32099-2060 | Case - Spring | 1 |
| 3 | 32099-2239-YK | Case - Recoil Starter | 1 |
| 4 | 130B0610 | Bolt - Flanged | 4 |
| 5 | 59106-2060 | Rope - 6 x 1380 | 1 |
| 6 | 46075-2059 | Grip - Recoil Starter | 1 |
| 7 | 92022-2248 | Washer | 1 |
| 8 | 59101-2054 | Reel - Recoil Starter | 1 |
| 9 | 92081-2021 | Spring | 3 |

| Ref. No. | Part No. | Description | No. Used |
|----------|---------------|----------------------------------------------|----------|
| 10 | 92081-2268 | Spring - Return | 1 |
| 11 | 13165-2073 | Pawl - Recoil Starter | 3 |
| 12 | 14020-2054 | Retainer - Recoil Starter | 1 |
| 13 | 92001-2027 | Bolt | 1 |
| 14 | 49080-2144 | Pulley - Starting | 1 |
| 15 | 120P0620 | Bolt - Socket | 3 |
| | 49088-2412-YK | Starter - Recoil (Incl. Ref. #1-5 & 8-14) | 1 |

Kawasaki Model FB460V Type KS08

* Order Parts from Kawasaki

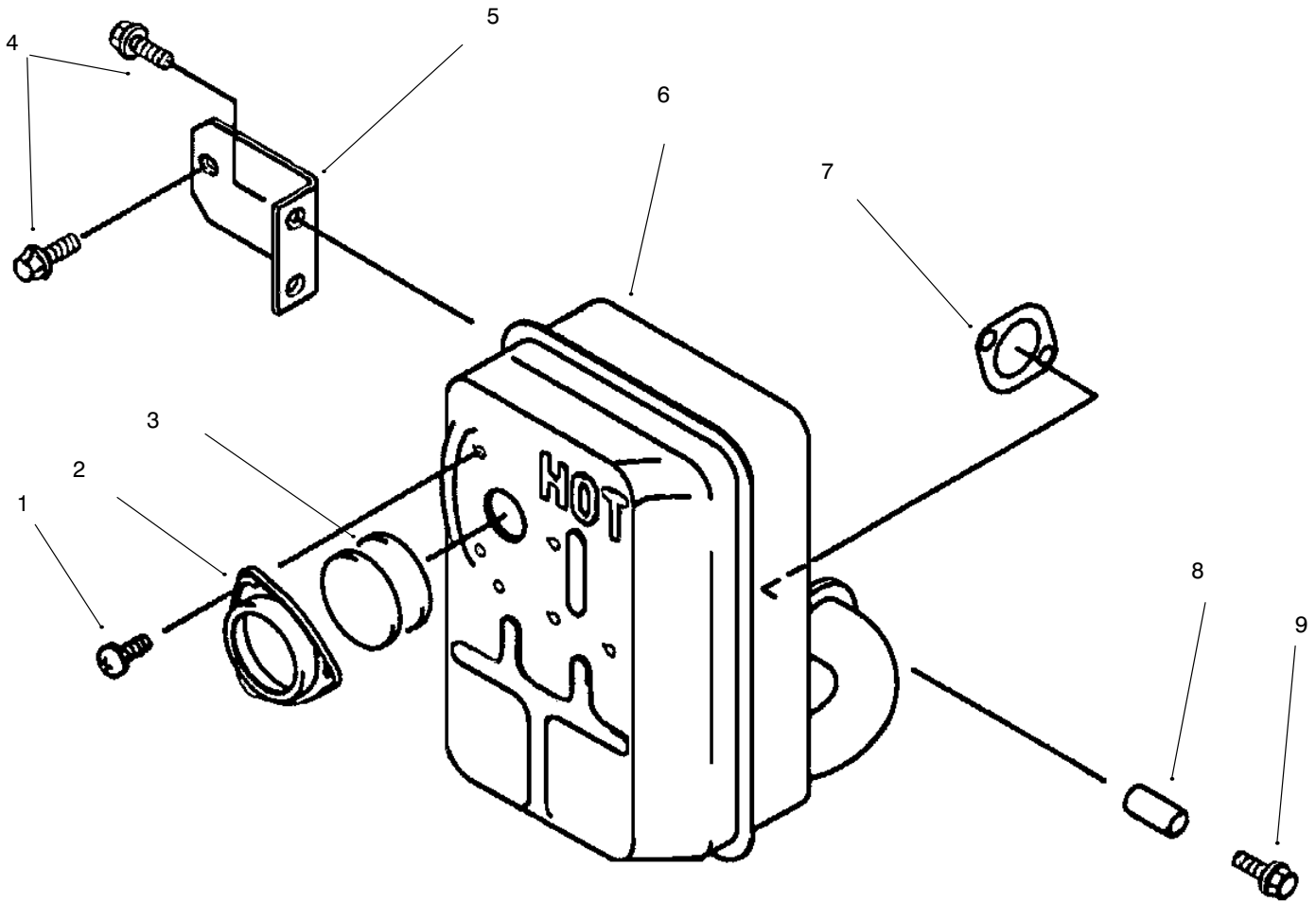


AIR - FILTER

| Ref. No. | Part No. | Description | No. Used | Ref. No. | Part No. | Description | No. Used |
|----------|------------|----------------------|----------|----------|------------|---------------------------------------|----------|
| 1 | 11009-2443 | Gasket - Air Filter | 1 | 6 | 92022-2220 | Washer | 2 |
| 2 | 11011-2174 | Case - Air Filter | 1 | 7 | 92002-2230 | Bolt | 2 |
| 3 | 11013-2021 | Element - Air Filter | 1 | * | 11010-2291 | Filter Assembly (Incl. Ref. # 2-6) | 1 |
| 4 | 11013-2020 | Element - Air Filter | 1 | | | | |
| 5 | 11012-2192 | Cap - Air Filter | 1 | | | | |

Kawasaki Model FB460V Type KS08

* Order Parts from Kawasaki



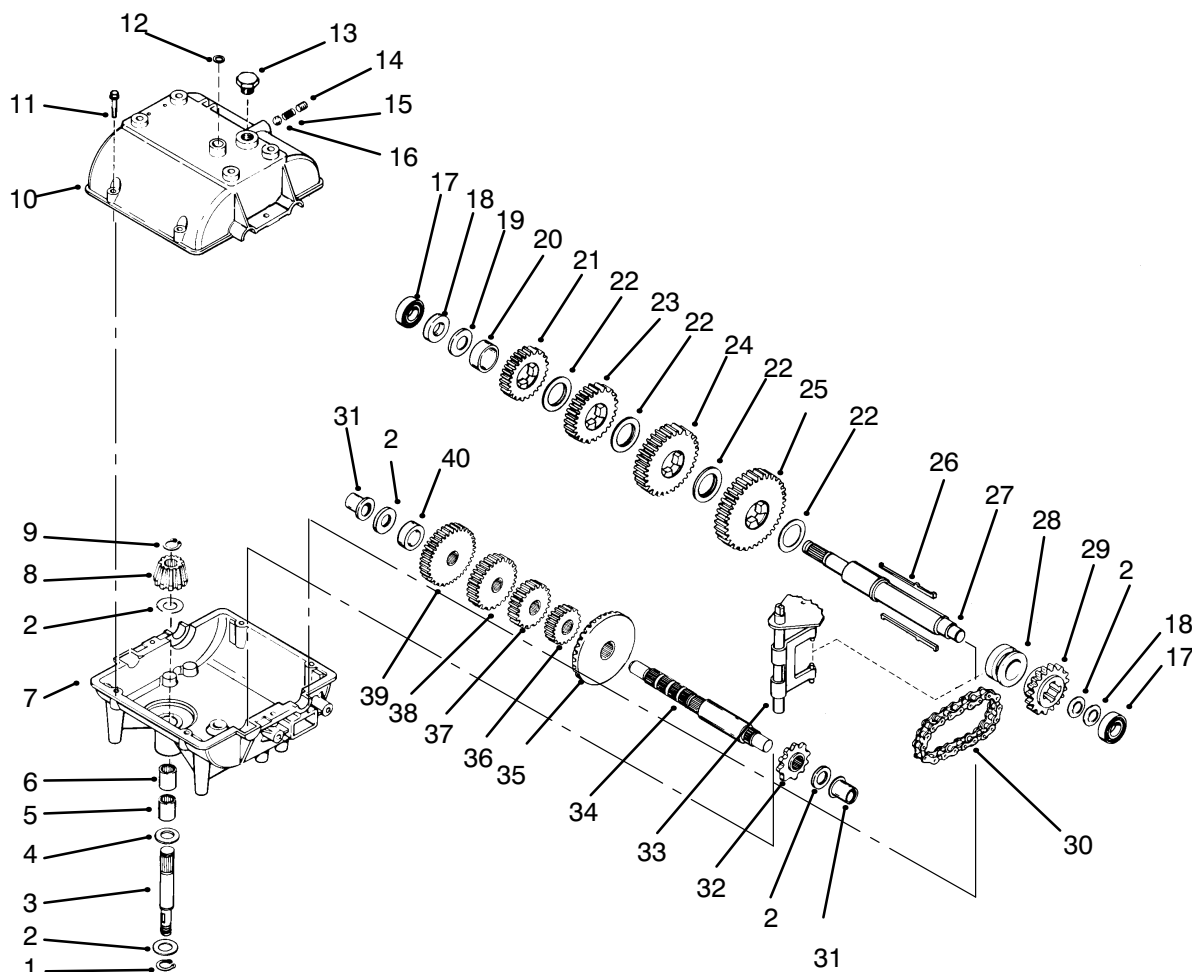
MUFFLER

| Ref. No. | Part No. | Description | No. Used |
|----------|---------------|----------------------|----------|
| 1 | 92009-2166 | Screw - 5 x 8 | 2 |
| 2 | 11012-2165-9Y | Cap - Spark Arrester | 1 |
| 3 | 18077-2052 | Arrester - Spark | 2 |
| 4 | 130G0812 | Bolt - Flanged | 4 |
| 5 | 11044-2069-9Y | Bracket | 1 |

| Ref. No. | Part No. | Description | No. Used |
|----------|---------------|---------------------------------------|----------|
| 6 | 49069-2190-9Y | Muffler Assembly (Incl. Ref. #1-3) | 1 |
| 7 | 11009-2527 | Gasket - Muffler | 1 |
| 8 | 92027-2081 | Collar | 2 |
| 9 | 130G0845 | Bolt - Flanged | 2 |

Kawasaki Model FB460V Type KS08

* Order Parts from Kawasaki



C-1776

PEERLESS TRANSMISSION MODEL 700-082

| Ref. No. | Part No. | Description | No. Used |
|----------|----------|------------------------|----------|
| 1 | 792035 | Ring – Retaining | 1 |
| 2 | 780072 | Washer – Thrust | 5 |
| 3 | 776135 | Shaft – Input | 1 |
| 4 | 792001 | ”O”Ring | 2 |
| 5 | 780142 | Bearing – Needle | 1 |
| 6 | 780086A | Bearing – Needle | 1 |
| 7 | 770090A | Case – Transmission | 1 |
| 8 | 778153 | Bevel Pinion – Input | 1 |
| 9 | 788040 | Ring – Retaining | 1 |
| 10 | 772099A | Cover – Transmission | 1 |
| 11 | 792073A | Screw – Self Tapping | 6 |
| 12 | 788069 | Seal – Square Cut | 1 |
| 13 | 792074 | Plug – Threaded | 1 |
| 14 | 792078 | Screw – Set | 1 |
| 15 | 792079 | Spring | 1 |
| 16 | 792077A | Ball – Steel | 1 |
| 17 | 780092 | Bearing – Ball | 2 |
| 18 | 780065 | Washer – Thrust | 2 |
| 19 | 780139 | Washer – Thrust | 1 |
| 20 | 786072 | Spacer | 1 |
| 21 | 778123A | Gear – Spur (25 Teeth) | 1 |
| 22 | 780108 | Washer – Thrust | 4 |

| Ref. No. | Part No. | Description | No. Used |
|----------|----------|-------------------------------------------|----------|
| 23 | 778250 | Gear – Spur (27 Teeth) | 1 |
| 24 | 778124A | Gear – Spur (30 Teeth) | 1 |
| 25 | 778125 | Gear – Spur (35 Teeth) | 1 |
| 26 | 792089A | Key | 4 |
| 27 | 776421 | Shaft – Shifter & Brake | 1 |
| 28 | 784266 | Collar – Shift | 1 |
| 29 | 786083 | Sprocket (18 Teeth) | 1 |
| 30 | 786081 | Chain – Roller (No. 41 Chain 24 Links) | 1 |
| 31 | 780105A | Bushing – Flanged | 2 |
| 32 | 786082 | Sprocket (9 Teeth) | 1 |
| 33 | 784267 | Rod & Fork Asm – Shift | 1 |
| 34 | 776134 | Shaft – Counter | 1 |
| 35 | 778154 | Gear – Bevel (42Teeth) | 1 |
| 36 | 778136 | Gear – Spur (15 Teeth) | 1 |
| 37 | 778126A | Gear – Spur (20 Teeth) | 1 |
| 38 | 778249 | Gear – Spur (23 Teeth) | 1 |
| 39 | 778127A | Gear – Spur (25 Teeth) | 1 |
| 40 | 786071 | Spacer | 1 |
| * | 788067B | Grease 32oz Bottle | 1 |
| * | 510334 | Grease Eliminator | 1 |

TORO PART NUMBER INDEX

| Part No. | Description | Pg. No. | Ref. No. | Qty. | Part No. | Description | Pg. No. | Ref. No. | Qty. |
|----------|-----------------------------|---------|----------|------|----------|----------------------------|---------|----------|------|
| 112843 | Washer - Clutch | 4 | 21 | 1 | 74-0220 | Idler - Bracket L.H. | 1 | 20 | 1 |
| 7-5461 | Spacer | 2 | 3 | 1 | 74-0230 | Idler - Bracket R.H. | 1 | * | 1 |
| 10-8110 | Washer - Flat | 3 | 17A/R | | 74-0320 | Lever - Shift | 2 | 2 | 1 |
| 12-3270 | Screw - Hex. Hd. | 2 | 28 | 6 | 74-0360 | Frame - Rear | 1 | 27 | 1 |
| 12-3270 | Screw - Hex. Hd. | 1 | 34 | 4 | 74-0380 | Control - Pivot | 7 | 13 | 1 |
| 26-9671 | Belt - Traction | 2 | 12 | 1 | 74-0470 | Rod - Pivot | 7 | 15 | 1 |
| 27-6230 | Bolt | 2 | 19 | 1 | 74-0480 | Pulley - Drive | 3 | 7 | 2 |
| 29-5560 | Switch - Ignition | 6 | 16 | 1 | 74-0510 | Valve - Fuel | 1 | 30 | 1 |
| 37-7600 | Bridge - Rectifier | 6 | 29 | 1 | 74-0521 | Fitting - Rod | 1 | 13 | 2 |
| 44-8310 | Ring - Retaining | 5 | 3 | 2 | 74-0720 | Tube - Manual | 6 | 1 | 1 |
| 44-8320 | Spring | 5 | 10 | 3 | 74-0740 | Control - Throttle | 6 | 14 | 1 |
| 44-8330 | Spacer - Pulley Bearing | 5 | 6 | 1 | 82-2180 | Panel - Control | 6 | 4 | 1 |
| 44-8340 | Collar - Bearing | 5 | 7 | 1 | 82-2190 | Switch - Bail | 7 | 5 | 1 |
| 44-8360 | Field Coil, Rotor & Bearing | 5 | 4 | 1 | 82-2240 | Wire Harness | 8 | 1 | 1 |
| 47-1970 | Grip - Engagement | 2 | 5 | 1 | 82-2300 | Switch - Clutch | 6 | 9 | 1 |
| 47-2982 | Hose - Fuel | 1 | 28 | 1 | 82-3820 | Boot | 6 | 8 | 1 |
| 47-2982 | Hose - Gas | 4 | 12 | 1 | 82-4800 | Lever - Idler | 2 | 21 | 1 |
| 51-4160 | Pulley - Wheel | 3 | 19 | 4 | 82-7631 | Rod - Control | 7 | 12 | 2 |
| 51-4170 | Spacer - Pulley | 3 | 20 | 8 | 82-7680 | Bail Assembly | 7 | 10 | 1 |
| 51-4180 | Drum - Brake | 3 | 22 | 2 | 82-7690 | Bar - Control | 7 | 4 | 1 |
| 51-4190 | Pulley - Driven | 2 | 13 | 1 | 86-7910 | Module - Interlock | 8 | 2 | 1 |
| 51-4220 | Guard - Coupler | 2 | 6 | 2 | 86-7910 | Module - Interlock | 6 | 18 | 1 |
| 51-4230 | Washer - Wheel | 3 | 29 | 2 | 92-1746 | Bearing | 3 | 14 | 4 |
| 51-4270 | Bearing - Shaft Extension | 3 | 1 | 2 | 92-5436 | Key | 4 | 7 | 1 |
| 51-4290 | Belt - Drive | 3 | 11 | 2 | 93-6657 | Decal - Danger | 6 | 10 | 1 |
| 51-4370 | Spring - Torsion R.H. | 1 | * | 1 | 93-7295 | Decal - Proline | 6 | 2 | 1 |
| 51-4380 | Spring - Torsion L.H. | 1 | 22 | 1 | 93-7297 | Decal - Ground Speed | 1 | 7 | 1 |
| 51-4450 | Screw - Leveler | 1 | 21 | 2 | 93-7298 | Decal - Control Bar | 7 | 7 | 1 |
| 51-4480 | Idler - Wheel | 1 | 18 | 2 | 93-7299 | Decal - Reverse Handle | 7 | 14 | 1 |
| 51-4490 | Spacer - Idler Wheel | 1 | 19 | 2 | 93-7431 | Guard - Transmission Shaft | 2 | 27 | 1 |
| 51-4540 | Retainer - Clutch | 4 | 8 | 1 | 93-7433 | Guard - Belt, R.H. | 2 | * | 1 |
| 51-4580 | Rod - Brake | 3 | 3 | 2 | 93-7434 | Guard - Belt, L.H. | 2 | 29 | 1 |
| 51-4600 | Brake Arm R.H. | 3 | * | 1 | 93-7436 | Mount - Angle | 1 | 32 | 2 |
| 51-4610 | Brake Arm L.H. | 3 | 9 | 1 | 93-7437 | Panel - Bottom | 1 | 33 | 1 |
| 51-4650 | Link - Brake | 3 | 21 | 2 | 93-7438 | Frame | 1 | 26 | 1 |
| 51-4660 | Plate - Link Brake | 3 | 26 | 2 | 93-7442 | Decal - Parking Brake | 7 | 2 | 1 |
| 51-4700 | Brake Band Assembly | 3 | 23 | 2 | 93-9353 | Decal - Fuel Shut Off | 1 | 31 | 1 |
| 51-4850 | Lever - Parking Brake | 7 | 1 | 1 | 94-1295 | Guard - Muffler Asm. | 4 | 24 | 1 |
| 52-2890 | Bushing | 1 | 5 | 2 | 94-5818 | Module | 6 | 34 | 1 |
| 54-0230 | Field Assembly | 5 | 1 | 1 | 95-2802 | Tank - Fuel | 1 | 2 | 1 |
| 54-2750 | V-Belt - Deck Drive | 4 | * | 1 | 98-0787 | Shaft - Extension L.H. | 3 | * | 1 |
| 54-3200 | Clutch Brake Assembly | 4 | 4 | 1 | 98-0788 | Shaft - Extension R.H. | 3 | 5 | 1 |
| 55-3570 | Fuel Tank | 1 | 1 | 1 | 98-0789 | Coupler | 2 | 8 | 1 |
| 55-7410 | Armature & Pulley Assembly | 5 | 5 | 1 | 98-0791 | Transmission | 2 | 17 | 1 |
| 55-7660 | V-Belt - Deck Drive | 4 | * | 1 | 218-461 | Nut | 6 | 6 | 1 |
| 56-6360 | Fuel - Filter | 4 | 10 | 1 | 218-595 | Connector - Body | 7 | 3 | 1 |
| 57-5811 | Panel - Bottom | 6 | 19 | 1 | 231-111 | Tire | 3 | 12 | 2 |
| 57-6360 | Screw - Hex. Hd. | 4 | 19 | 1 | 232-27 | Valve Stem | 3 | 16 | 2 |
| 57-6370 | Screw - Hex. Hd. | 4 | 15 | 1 | 237-7 | O-Ring | 1 | 35 | 1 |
| 57-6380 | Screw - Hex. Hd. | 4 | 18 | 3 | 237-124 | Grommet | 1 | 25 | 1 |
| 57-6390 | Nut | 4 | 13 | 2 | 237-141 | Grommet - Rubber | 7 | 9 | 2 |
| 62-4540 | Pulley - Idler | 2 | 22 | 1 | 242-80 | Rim | 3 | 15 | 2 |
| 63-7590 | Relay | 8 | 3 | 1 | 2412-98 | Clamp - Fuel Line | 4 | 11 | 2 |
| 63-7590 | Relay | 6 | 21 | 1 | 2412-98 | Clamp - Fuel line | 1 | 29 | 1 |
| 63-8360 | Key | 6 | 5 | 2 | 2412-108 | Clamp - Hose | 4 | 22 | 1 |
| 66-7400 | Plate - Control | 1 | 8 | 1 | 2412-120 | R-Clamp | 6 | 24 | 2 |
| 67-6370 | Bracket - Support R.H. | 1 | * | 1 | 251-291 | Bearing - Pulley | 5 | 8 | 1 |
| 67-6380 | Bracket - Support L.H. | 1 | 14 | 1 | 251-292 | Bearing - Field | 5 | 2 | 1 |
| 67-6440 | Handle - Upper | 6 | 28 | 1 | 256-155 | Bushing | 2 | 24 | 2 |
| 68-2190 | Spring - Extension | 2 | 18 | 18 | 283-6 | Pin - Clevis | 1 | 12 | 2 |
| 68-9690 | Fitting - Rod | 1 | 6 | 2 | 302-5 | Fitting - Grease | 2 | 7 | 2 |
| 72-2190 | Mount - Shift Lever | 2 | 1 | 1 | 302-11 | Fitting - Grease | 3 | 13 | 2 |
| 74-0040 | Spacer - Pivot Idler | 1 | 23 | 4 | 321-2 | Screw | 6 | 33 | 2 |
| 74-0050 | Sheave - Lower Half | 4 | 5 | 1 | 321-4 | Screw - Hex. Hd. | 3 | 2 | 4 |
| 74-0060 | Sheave - Upper Half | 4 | 6 | 1 | 322-2 | Screw - Hex. Hd. | 2 | 15 | 4 |

*Not Illustrated

TORO PART NUMBER INDEX (Cont.)

| Part No. | Description | Pg. Ref. No. No. Qty. | Part No. | Description | Pg. Ref. No. No. Qty. |
|----------|-------------------------|--------------------------|----------|--------------------------|--------------------------|
| 322-4 | Screw - Hex. Hd. | 1 10 4 | 3290-378 | Cable Tie | 6 26 3 |
| 322-7 | Screw - Hex. Hd. | 3 25 8 | 3296-2 | Nut | 6 31 1 |
| 323-7 | Screw - Hex. Hd. | 1 16 4 | 3296-2 | Nut - Lock | 7 6 5 |
| 323-8 | Screw - Hex. Hd. | 2 23 1 | 3296-2 | Nut - Lock | 6 11 4 |
| 323-8 | Screw - Hex. Hd. | 1 36 2 | 3296-5 | Nut - Lock | 5 9 3 |
| 323-16 | Screw - Hex. Hd. | 1 15 2 | 3296-6 | Nut | 2 25 1 |
| 329-10 | Screw - Hex. Hd. | 2 4 1 | 3296-23 | Nut - Lock | 1 17 2 |
| 3234-11 | Screw - Hex. Hd. | 6 23 4 | 3296-39 | Nut - Lock | 2 20 1 |
| 3245-1 | Screw - Socket Hd. | 2 11 1 | 3296-39 | Nut - Lock | 1 24 6 |
| 3245-3 | Screw - Socket Hd. Set | 3 6 2 | 3296-42 | Nut - Hex | 6 17 3 |
| 3253-4 | Washer - Lock | 1 9 4 | 3296-42 | Nut - Lock | 2 9 4 |
| 3253-4 | Washer - Lock | 2 16 4 | 32103-25 | Nut - Wing | 1 3 2 |
| 3253-4 | Washer - Lock | 4 17 3 | 32105-1 | Screw - Hex. Hd. Machine | 7 8 1 |
| 3253-4 | Washer - Lock | 3 24 8 | 32105-13 | Screw | 6 30 1 |
| 3254-5 | Washer - Lock | 6 15 1 | 32105-14 | Screw - Hex. Hd. Machine | 6 13 4 |
| 3255-7 | Washer | 6 32 1 | 32120-64 | Ring - Retaining | 2 10 3 |
| 3255-8 | Washer - External Tooth | 4 14 1 | 32128-21 | Nut - Lock | 6 27 4 |
| 3256-23 | Washer - Flat | 1 4 9 | 32144-14 | Screw - Hex. Hd. | 2 26 2 |
| 3256-23 | Washer - Flat | 4 16 3 | 32144-19 | Screw - Self Tapping | 6 25 4 |
| 3256-24 | Washer | 2 30 1 | 32151-40 | Ring - Retaining | 3 10 2 |
| 3257-5 | Key - Woodruff | 3 4 3 | 32151-56 | Ring - Retaining | 3 28 2 |
| 3290-307 | Pin - Cotter | 3 8 2 | 32151-72 | Ring - Retaining | 3 27 4 |
| 3290-307 | Pin - Cotter | 1 11 4 | 32151-80 | Ring - Push On | 7 16 2 |
| 3290-307 | Pin - Cotter | 7 11 2 | 32151-91 | Ring - Retaining | 3 18 2 |

TABLE OF CONTENTS

| Description | Page | Description | Page |
|-------------------------------------------------|------|-------------------------|------|
| Frame, Fuel Tank And Wheel Drive Idler | 1 | Valve / Camshaft | 12 |
| Transmission, Idler, Drive Pulleys & Drive Belt | 2 | Lubrication / Equipment | 13 |
| Axle, Brakes, Wheel Drive And Belts | 3 | Cooling / Equipment | 14 |
| Engine And Clutch Assembly | 4 | Electrical / Equipment | 15 |
| Clutch Assembly No. 54-3200 | 5 | Control / Equipment | 16 |
| Handle Assembly | 6 | Carburetor | 17 |
| Electrical Schematic | 8 | Starter | 19 |
| Peerless Transmission Model No. 700-082 | 9 | Air Filter | 20 |
| Engine Kawasaki Model FB460V Type KS08 | | Muffler | 21 |
| Crankcase | 10 | Numerical Parts Index | 22 |
| Piston / Crankshaft | 11 | | |

Optional Equipment

| Description | Model / Part No. | Description | Model / Part No. |
|-------------------|------------------|---------------------------------|------------------|
| 36" Cutting Unit | Model No. 30136 | 37" Deck (Cloth Bag) Bag Kit | Model No. 30129 |
| 37" Recycler Deck | Model No. 30137 | 37" Deck (Steel Hopper) Bag Kit | Model No. 30130 |
| 44" Cutting Unit | Model No. 30144 | 44/52" Deck Bag Kit | Model No. 30128 |
| 48" Recycler Deck | Model No. 30148 | 2-5" HOC Kit | Part No. 84-5010 |
| 52" Cutting Unit | Model No. 30152 | Front Weight Kit-36/37" Deck | Part No. 80-3350 |
| 62" Cutting Unit | Model No. 30162 | Standard Sulky | Model No. 30122 |
| 36" Deck Bag Kit | Model No. 30125 | Steerable Sulky | Model No. 30123 |

Compliance with Radio Interference Regulations Certified.
Certifie Conforme au Reglement sur le Brouillage Radioelectrique.

*Not Illustrated

Litho in U.S.A.

