



Cab Kit

Workman® MD/MDE/MDX/MDXD Utility Vehicle

Model No. 07320—Serial No. 315000001 and Up

Installation Instructions

Safety

⚠ WARNING

CALIFORNIA

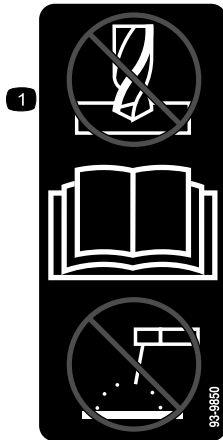
Proposition 65 Warning

This product contains a chemical or chemicals known to the State of California to cause cancer, birth defects, or reproductive harm.

Safety and Instructional Decals



Safety decals and instructions are easily visible to the operator and are located near any area of potential danger. Replace any decal that is damaged or missing.



93-9850

decal93-9850

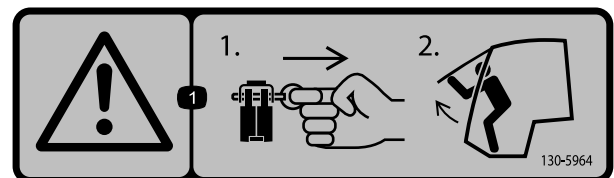
1. Do not repair or revise—read the *Operator's Manual*.



117-4955

decal117-4955

1. Warning—read the *Operator's Manual*; wear the seat belt when seated in the operator's position; avoid tipping the machine.
2. Warning—wear hearing protection.

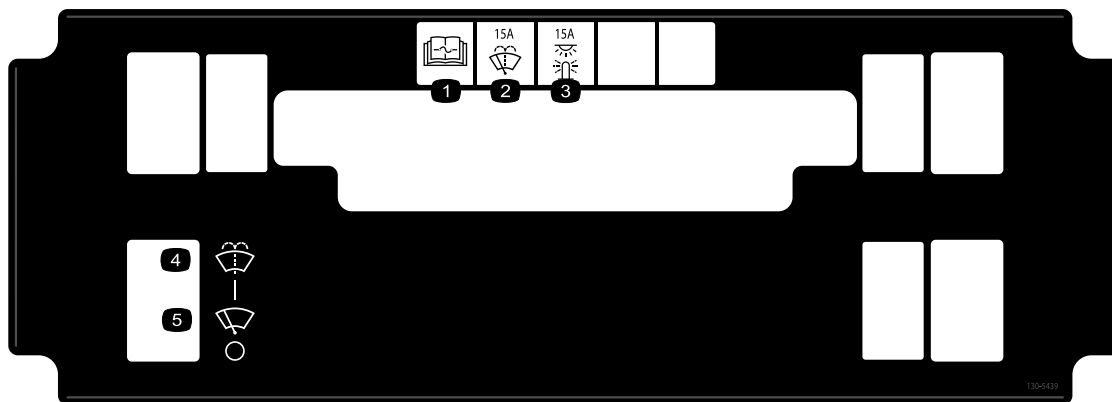


130-5964

decal130-5964

1. Warning—in the event of an emergency 1) Pull the locking pin out of each hinge; 2) Push the front window out to exit.





decal130-5439

130-5439

1. Read the *Operator's Manual* for information on fuses.
 2. Windshield wiper (15 A)
 3. Lights (15 A)
 4. Windshield spray
 5. Windshield wiper
-

Installation

Loose Parts

Use the chart below to verify that all parts have been shipped.

Procedure	Description	Qty.	Use
1	No parts required	–	Prepare the machine.
2	No parts required	–	Remove the ROPS assembly.
3	Compression spring	2	Install the compression spring.
4	Floor mount Nut (3/8 inch) Bolt (3/8 x 1 inch) Bolt (5/16 inch) Nut (5/16 inch) Bolt (3/8 x 7/8 inch) Washer	2 6 4 2 2 2 2	Install the floor mounts.
5	Cab frame Bolts (3/8 x 7/8 inch) Bolt (3/8 x 3/4 inch) Nuts (3/8 inch)	1 4 10 10	Install the cab frame.
6	Side-plate panels Bolts (1/4 inch) Side-plate foam panel	2 4 2	Install the side panels.
7	Seat-belt anchors Bolts (3/8 x 3/4 inch) Nuts (3/8 inch) Seat belt receiver end Bolt (7/16 inch) Nut (7/16 inch) Seat-belt bracket Seat belts Bolt (3/8 x 7/8 inch)	2 4 4 2 4 4 2 2 2	Install the seat shroud.
8	Wire harness Clip tie Plug Fuse (30 A)	1 1 1 1	Route the wire harness.

Media and Additional Parts

Description	Qty.	Use
12 V Power Plug Adapter Kit	1	This kit is needed for the Workman MDE Utility Vehicle only.

1

Preparing the Machine

No Parts Required

Procedure

1. Park the machine on a level surface.
2. Engage the parking brake.
3. Raise the bed until the prop rod is fully engaged; refer to the *Operator's Manual*.
4. Shut off the engine and remove the key.
5. Disconnect the battery; refer to the *Operator's Manual*.

2

Removing the ROPS Assembly

No Parts Required

Removing the ROPS Assembly

If your machine does not have a ROPS assembly, proceed to step 3 [Installing the Compression Spring](#) (page 4).

Remove the bolts and nuts that secure the ROPS assembly to the frame of the machine as shown in [Figure 1](#) and remove the ROPS assembly.

Note: Do not remove the seat belt anchors that are secured on the frame.

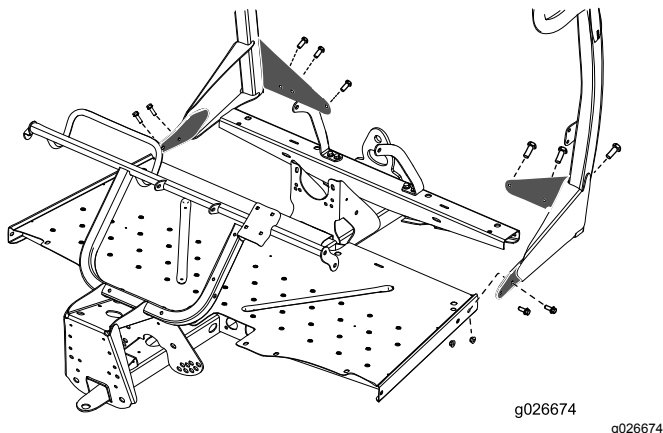


Figure 1

3

Installing the Compression Spring

Parts needed for this procedure:

2	Compression spring
---	--------------------

Procedure

Important: For 2015 and older models, you must order the 2 compression springs (Toro Part No. 117-4847) for installation.

For 2016 and newer models, the compression springs are included in this kit.

1. Raise the front of the machine off the ground and support it with jack stands.
2. Remove the current shock assemblies as shown in [Figure 2](#).

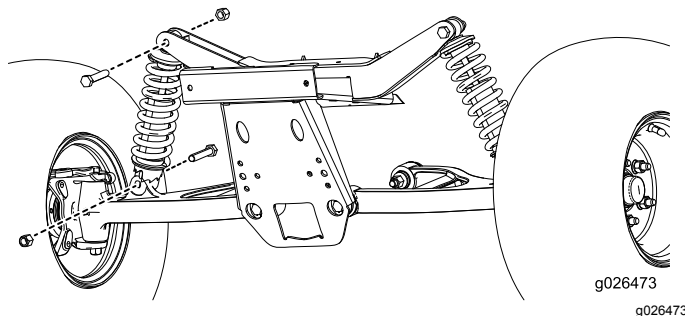


Figure 2

3. Using a spring compressor, remove the current springs and install the springs from this kit.
4. Install the shock assemblies and turn them 3 clicks up from the longest position.

Note: Refer to the *Service Manual* for further instructions on replacing the spring and checking the front end toe of the tires.

5. Torque the bolts to 95 to 122 N·m (70 to 90 ft-lb).

4

Installing the Floor Mounts

Parts needed for this procedure:

2	Floor mount
6	Nut (3/8 inch)
4	Bolt (3/8 x 1 inch)
2	Bolt (5/16 inch)
2	Nut (5/16 inch)
2	Bolt (3/8 x 7/8 inch)
2	Washer

Procedure

1. Secure the floor panels to the frame as shown in [Figure 3](#).

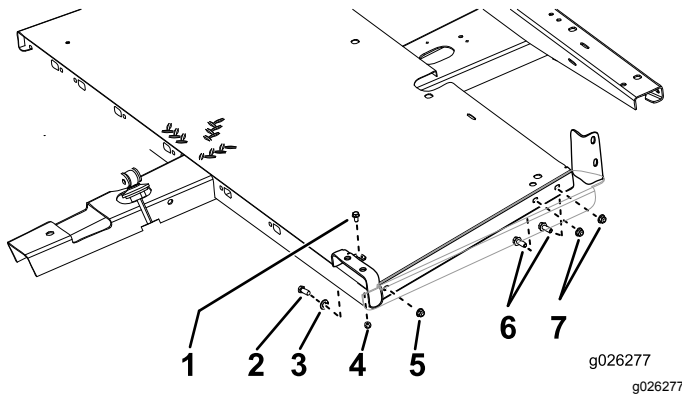


Figure 3

1. Bolt (5/16 inch)
2. Bolt (3/8 x 7/8 inch)
3. Washer
4. Nut (5/16 inch)
5. Nut (3/8 inch)
6. Bolt (3/8 x 1 inch)
7. Nut (3/8 inch)

2. Torque the 2 bolts (3/8 x 7/8 inch) and 4 bolts (3/8 x 1 inch) to 37 to 45 N·m (27 to 33 ft-lb).
3. Torque the 2 bolts (5/16 inch) to 1978 to 2543 N·cm (175 to 225 in-lb).

5

Installing the Cab Frame

Parts needed for this procedure:

1	Cab frame
4	Bolts (3/8 x 7/8 inch)
10	Bolt (3/8 x 3/4 inch)
10	Nuts (3/8 inch)

Procedure

Lift the cab frame using the lifting points and place it on the machine ([Figure 4](#)).

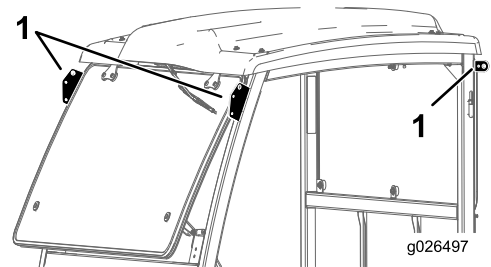


Figure 4

1. Lifting points

Secure the frame to the machine using 10 bolts (3/8 x 3/4 inch), 10 nuts (3/8 inch), and 4 bolts (3/8 x 7/8 inch) as shown in [Figure 5](#).

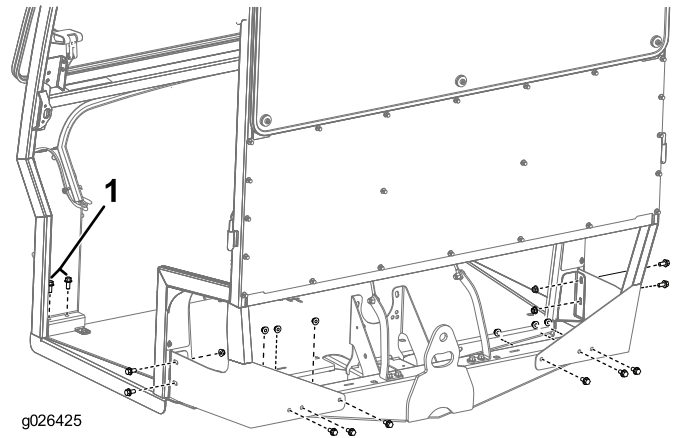


Figure 5

1. Bolt (3/8 x 7/8 inch)

Torque the bolts to 37 to 45 N·m (27 to 33 ft-lb).

6

Installing the Side Panels

Parts needed for this procedure:

2	Side-plate panels
4	Bolts (1/4 inch)
2	Side-plate foam panel

Installing the Side-Plate Panels

1. Fasten the mounting plates onto the cab using 4 bolts (1/4 inch) as shown in [Figure 6](#).
2. Torque the bolts to 1017 to 1243 N·cm (90 to 110 in·lb).
3. Remove the paper backing from the double stick tape on the mounting plates ([Figure 6](#)).

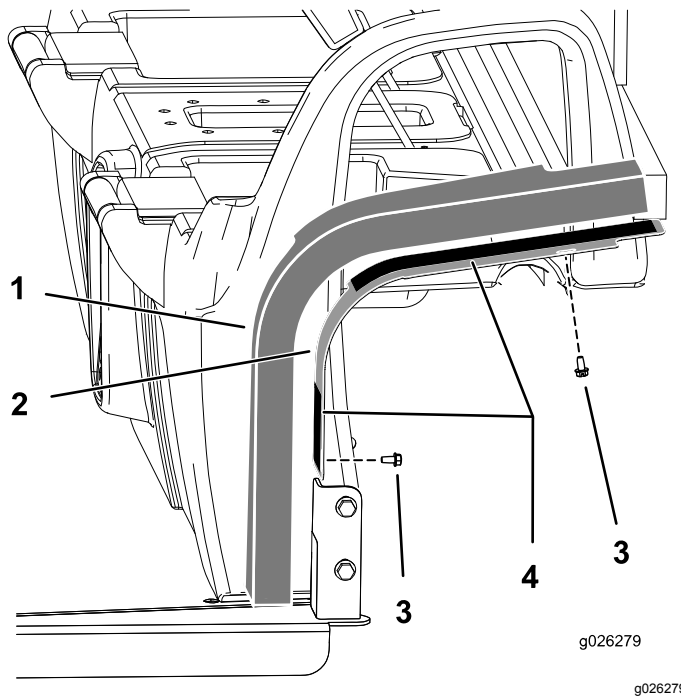


Figure 6

1. Foam panel
2. Mounting plates
3. Bolts (1/4 inch)
4. Double-stick tape

4. Install the foam panels onto the assembly ([Figure 6](#)).

7

Installing the Seat Belts

Parts needed for this procedure:

2	Seat-belt anchors
4	Bolts (3/8 x 3/4 inch)
4	Nuts (3/8 inch)
2	Seat belt receiver end
4	Bolt (7/16 inch)
4	Nut (7/16 inch)
2	Seat-belt bracket
2	Seat belts
2	Bolt (3/8 x 7/8 inch)

Installing the Seat Belts

1. Mount a seat belt bracket to each ROPS tab with 2 bolts (3/8 inch) as shown in [Figure 7](#).

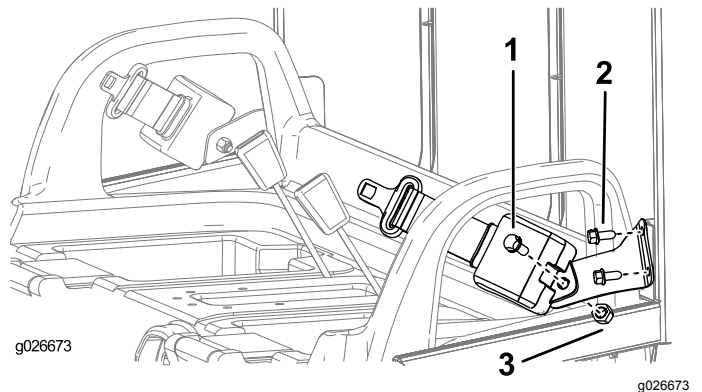


Figure 7

1. Bolt (7/16 inch)
2. Bolt (3/8 x 7/8 inch)
3. Nut (7/16 inch)

2. Torque the 4 bolts (3/8 inch) to 37 to 45 N·m (27 to 33 ft·lb).
3. Mount the retractable end of each seat belt assembly to each seat belt anchor bracket with a bolt (7/16 inch) and a nut (7/16 inch) as shown in [Figure 7](#).

Note: If your machine was already equipped with a ROPS assembly, the seat belt anchors should already be installed; proceed to [8 Routing the Wire Harness \(page 8\)](#).

4. Torque the 2 bolts (7/16 inch) to 67 to 83 N·m (49 to 61 ft·lb).

5. Secure the left and right seat belt anchor to the front frame with 4 bolts (3/8 x 3/4 inch) and 4 nuts (3/8 inch) as shown in [Figure 8](#).

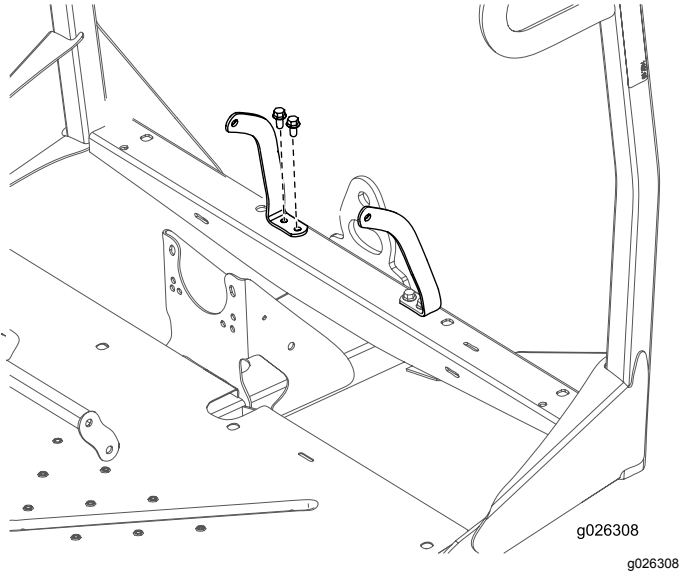


Figure 8

6. Torque the 4 bolts (3/8 x 3/4 inch) to 37 to 45 N·m (27 to 33 ft-lb).
7. Using the dimensions shown in [Figure 9](#), locate, mark, and drill 2 holes in the top of the seat shroud.

Important: Use caution when drilling these holes; electrical components and control cables are located under the seat shroud.

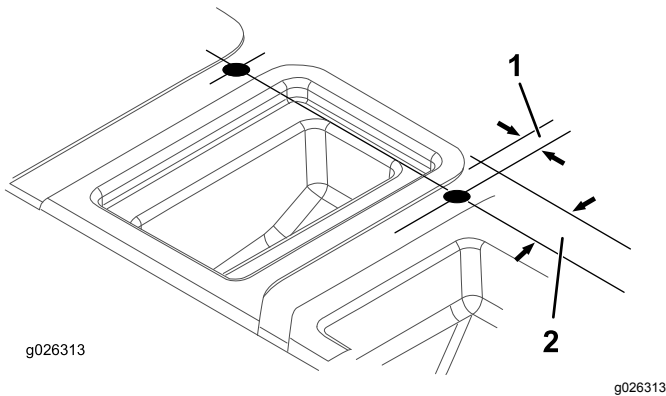


Figure 9

1. 21 mm (2.1 cm) 2. 51 mm (2 inches)

8. Insert the mounting side of the receiver end of each seat belt lock assembly into 1 of the newly drilled holes in the seat base ([Figure 10](#)).

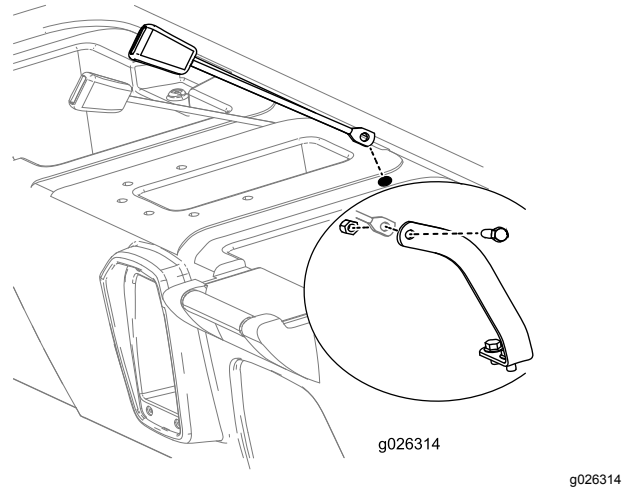


Figure 10

9. Mount the receiver end of each seat belt assembly to each seat belt anchor with a bolt (7/16 inch) and nut (7/16 inch) as shown in [Figure 10](#).
10. Torque the bolts to 67 to 83 N·m (49 to 61 ft-lb).

8

Routing the Wire Harness

Parts needed for this procedure:

1	Wire harness
1	Clip tie
1	Plug
1	Fuse (30 A)

Procedure

There are 2 options for routing the wire harness.

One option is routing the harness under the control panel as shown in the top image on [Figure 11](#). Install the clip tie in the lower hole on the side panel and the plug in the top hole.

The other option, Box B in [Figure 11](#), requires that you drill a hole into the console. Install the clip tie in the top hole on the side panel and the plug into the lower hole.

Important: Use caution when drilling this hole; electrical components and control cables are located under the seat shroud.

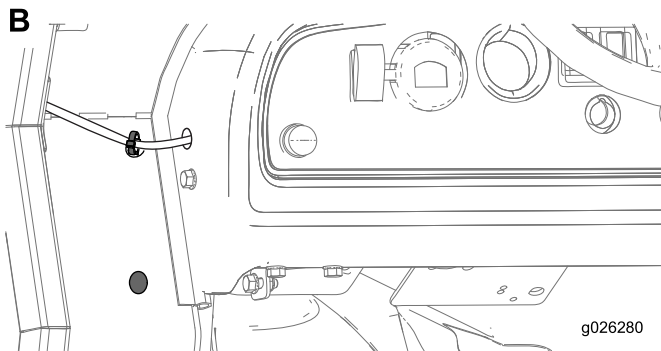
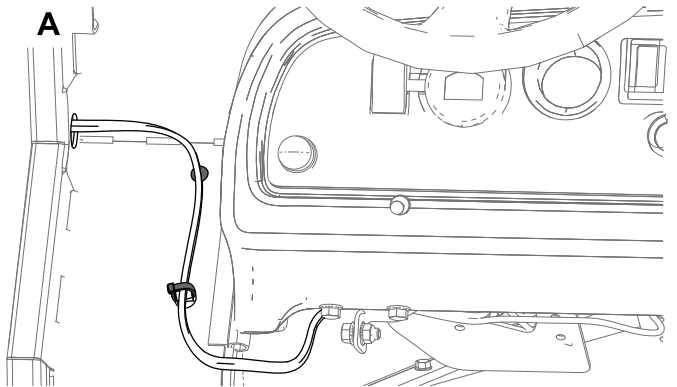


Figure 11

Connect the ring terminal on the harness to the grounding block and insert the fuse block connector into an available fuse block connection ([Figure 12](#)). If a fuse block connection is not available, add a fuse block to the fuse block grouping. Contact your Authorized Service Dealer for more information.

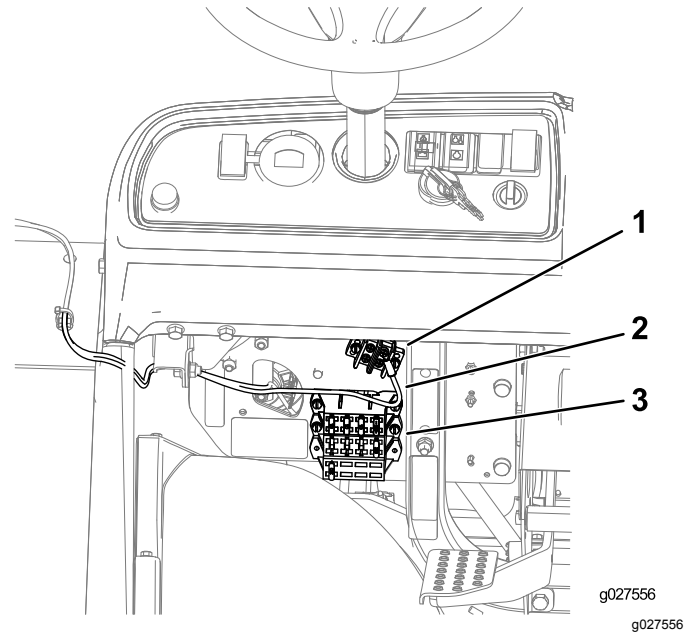


Figure 12

1. Ground block
2. Wire harness
3. Fuse block

Lower the bed and connect the battery; refer to the *Operator's Manual*.

Product Overview

Controls

Control Panel

Windshield Wiper Switch

Push the top of the switch to activate the windshield wipers ([Figure 13](#)).

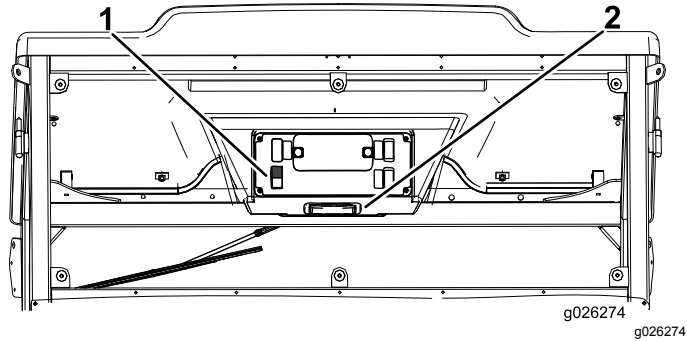


Figure 13

1. Windshield wiper control 2. Light switch

Light Switch

Push the light plate to turn on the light ([Figure 13](#)).

Windshield Latch

Lift up on latches to open the windshield ([Figure 14](#)). Press in the latch to lock the windshield in the OPEN position. Pull out and down on the latch to close and secure the windshield.

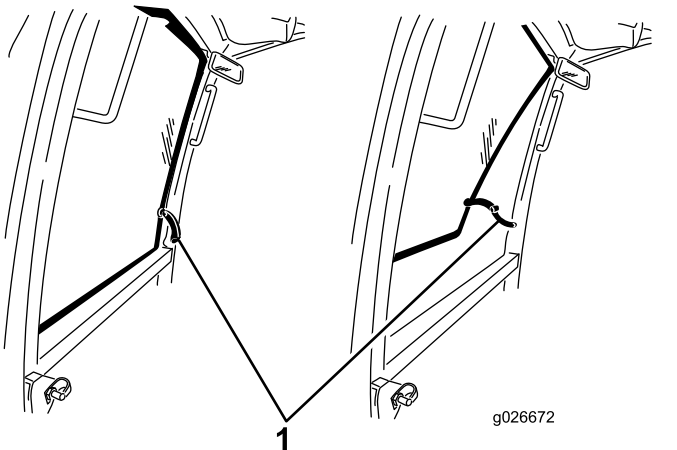


Figure 14

1. Windshield latch

Notes:

Notes:

Declaration of Incorporation

Model No.	Serial No.	Product Description	Invoice Description	General Description	Directive
07320	315000001 and Up	Cab Kit, Workman MD/MDE/MDX/MDXD Utility Vehicle	CAB-MID DUTY WORKMAN	Utility Vehicle	2006/42/EC, 2000/14/EC

Relevant technical documentation has been compiled as required per Part B of Annex VII of 2006/42/EC.

We will undertake to transmit, in response to requests by national authorities, relevant information on this partly completed machinery. The method of transmission shall be electronic transmittal.

This machinery shall not be put into service until incorporated into approved Toro models as indicated on the associated Declaration of Conformity and in accordance with all instructions, whereby it can be declared in conformity with all relevant Directives.

Certified:



John Heckel
Sr. Engineering Manager
8111 Lyndale Ave. South
Bloomington, MN 55420, USA
June 1, 2017

Authorized Representative:

Marcel Dutrieux
Manager European Product Integrity
Toro Europe NV
Nijverheidsstraat 5
2260 Oevel
Belgium

Tel. +32 16 386 659