



2 Post ROPS Extension Kit

Groundsmaster® 4500, 4700 or Reelmaster® 7000 Series Traction Unit

Model No. 31351—Serial No. 400000000 and Up

Installation Instructions

Safety

⚠ WARNING

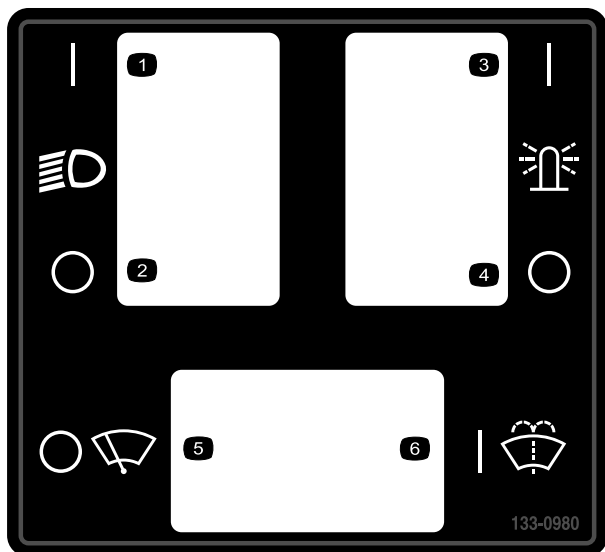
CALIFORNIA Proposition 65 Warning

This product contains a chemical or chemicals known to the State of California to cause cancer, birth defects, or reproductive harm.

Safety and Instructional Decals

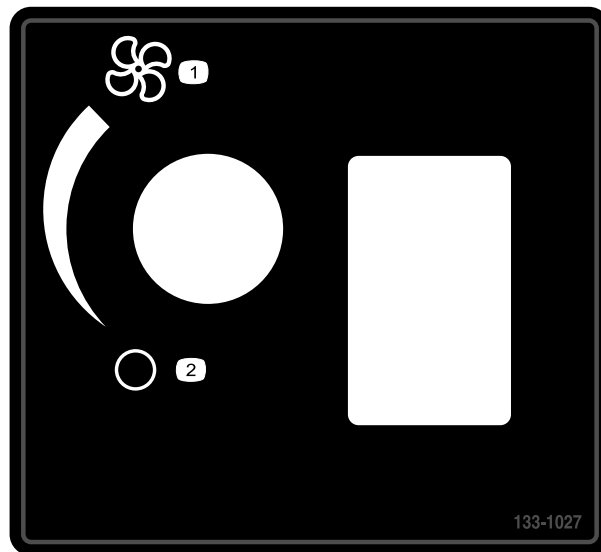


Safety decals and instructions are easily visible to the operator and are located near any area of potential danger. Replace any decal that is damaged or missing.



133-0980

- | | |
|----------------------|-----------------------|
| 1. Head light—on | 4. Overhead light—off |
| 2. Head light—off | 5. Wipers—off |
| 3. Overhead light—on | 6. Wiper fluid—on |



133-1027

- | | |
|------------|------------|
| 1. Fan—max | 2. Fan—off |
|------------|------------|



Installation

1

Preparing the Machine

No Parts Required

Procedure

1. Park the machine on a level surface.
2. Lower the cutting units.
3. Engage the parking brake.
4. Shut off the engine and remove the key.
5. If there are lights on the roll bar, remove the lights and the mounting hardware from the roll bar.
Retain the lights and the mounting hardware.
6. Remove the locking pins from both sides of the roll bar ([Figure 1](#)).

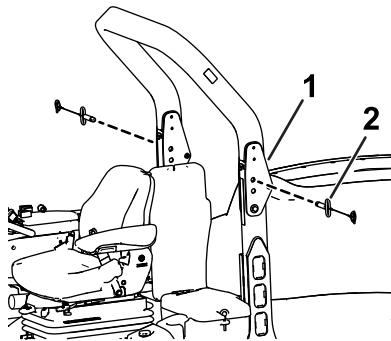


Figure 1

g204506

1. Roll bar
2. Locking pin

7. Remove the bolts from both sides of the foot frame ([Figure 2](#)) as shown in [Figure 3](#) and [Figure 4](#).

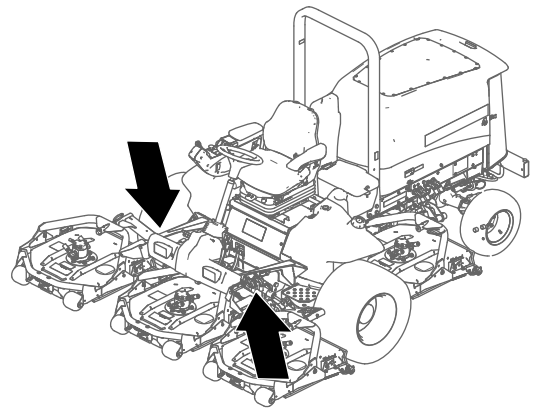


Figure 2
Foot frame

g204217

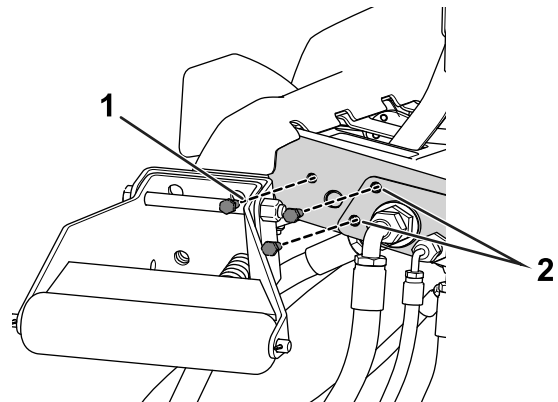


Figure 3
Left side shown

g204504

1. Bolt
2. Drill hole—3/8 inch

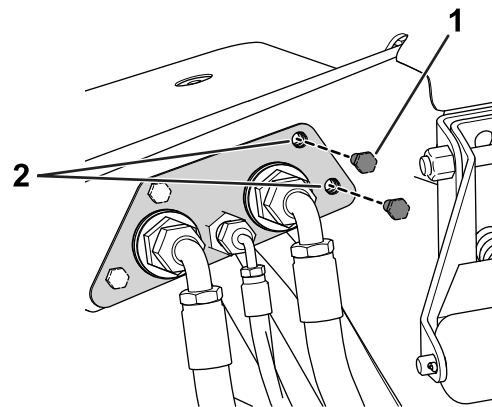


Figure 4
Right side shown

g204505

1. Bolt
2. Drill hole—3/8 inch

8. Use a drill (3/8 inch) to increase the diameter of the 2 holes on both sides of the foot frame as shown in [Figure 3](#) and [Figure 4](#).

2

Assembling the Frame

Parts needed for this procedure:

1	Left front mount
1	Right front mount
1	Right brace
1	Left brace
56	Carriage bolt (5/16 x 3/4 inch)
60	Flange nut (5/16 inch)
6	Flange nut (3/8 inch)
4	Bolt (3/8 x 1 inch)
1	Lower bracket mount
4	Hex-head flange bolt (5/16 x 1 inch)
1	Front roof mount
1	Left upper bracket
1	Right upper bracket
1	Rear roof mount
1	Left side mount
1	Right side mount
4	Channel mount
1	Right roof mount
1	Left roof mount
1	Lower window seal
2	Bolt (3/8 x 3/4 inch)
14	Plastic rivet
2	Plastic plug
2	Panel plug
8	Push rivet
2	Side channel mount
2	Roof channel mount
2	Bolt (3/4 x 4 inches)
4	Washer
2	Locknut (3/4 inch)
4	Carriage bolt (1/4 x 3/4 inch)
4	Flange nut (1/4 inch)

Procedure

Refer to [Figure 5](#) as you perform the following steps.

1. Install 2 bolts (3/4 x 4 inches), 4 washers, and 2 locknuts (3/4 inch) to the left and right pivot plates on the roll bar.
2. Install the left and right front mount bases onto the floor panel using 4 bolts (3/8 x 1 inch) and 4 flange nuts (3/8 inch).
3. Install the rear roof mount onto the upper part of the roll bar with 2 roof channel mounts, 8 carriage bolts (5/16 x 3/4 inch), and 8 flange nuts (5/16 inch).

Note: Ensure that the mount is centered on the roll bar.

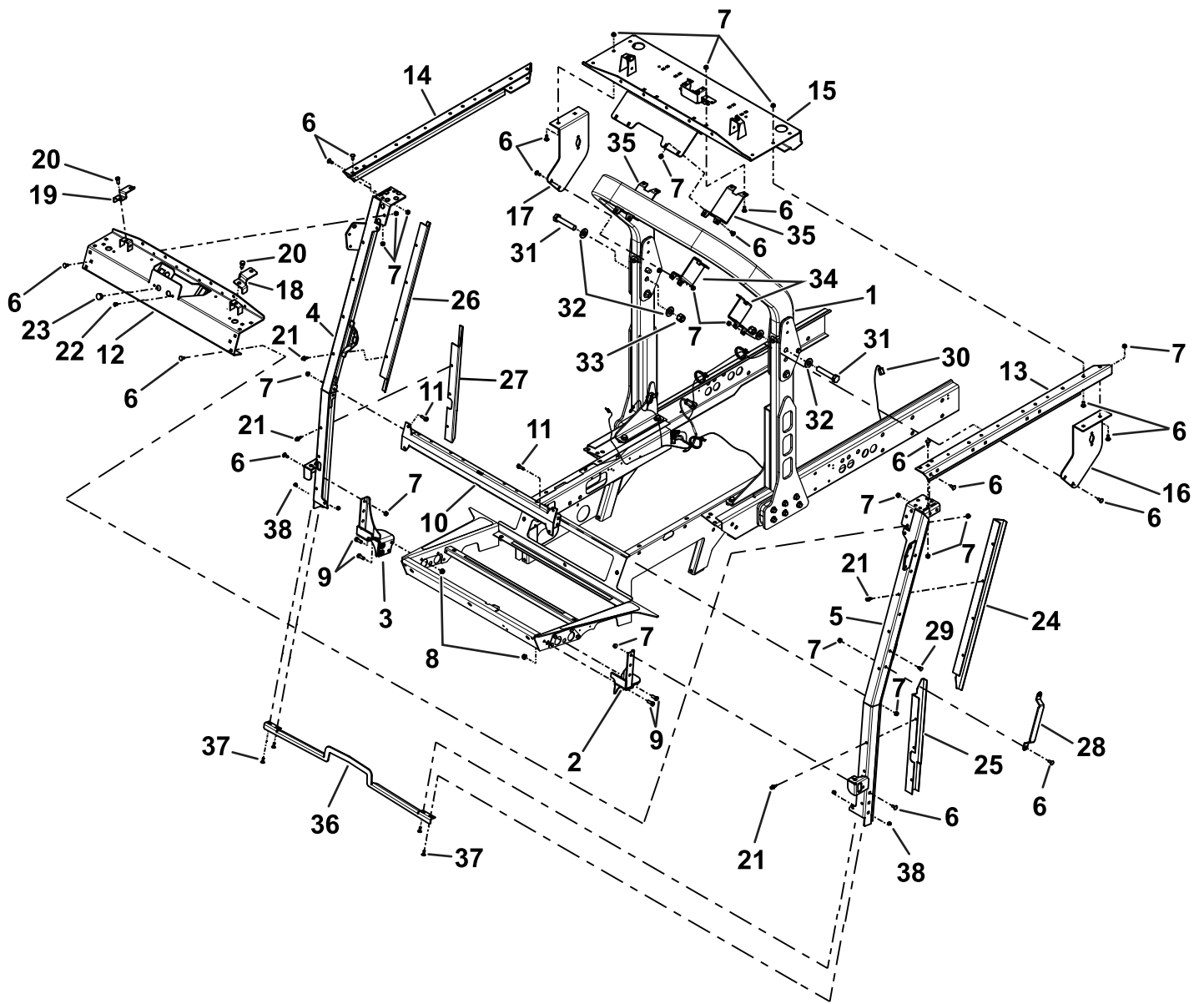
Note: Tighten the bolts, then loosen them a half turn.

4. Install the left and right side mounts to the left and right upper brackets, respectively, with 4 carriage bolts (5/16 x 3/4 inch) and 4 flange nuts (5/16 inch).
5. Install the left and right side mounts to the roll bar with 2 side channel mounts, 8 carriage bolts (5/16 x 3/4 inch), and 8 flange nuts (5/16 inch).
6. Install the left and right braces onto the front mount bases with 6 carriage bolts (5/16 x 3/4 inch) and 6 flange nuts (5/16 inch).
- Note:** Tighten the bolts, then loosen them a half turn.
7. Install the left and right upper brackets onto the rear roof mount and braces with 16 carriage bolts (5/16 x 3/4 inch) and 16 flange nuts (5/16 inch).
- Note:** Tighten the bolts, then loosen them a half turn.
8. Install the 2 panel plugs and 2 plastic plugs to the front roof mount.
9. Install the left and right roof mounts to the front roof mount with 2 bolts (3/8 x 3/4 inch) and 2 flange nuts (3/8 inch).
10. Install the front roof mount with 12 carriage bolts (5/16 x 3/4 inch) and 12 flange nuts (5/16 inch).

If you are also installing the Operator Fan and Interior Roof Kit:

- A. Keep all fasteners loose.
 - B. Mount the Operator Fan and Interior Roof Kit.
 - C. Tighten all fasteners.
11. Install the lower mount bracket to the left and right brace assemblies with 4 hex-head-flange bolts (5/16 x 1 inch) and 4 flange nuts (5/16 inch).
 12. Secure all fasteners that were left loose.

13. Install 3 push rivets into the left brace and 5 push rivets into the right brace.
14. Install the grab handle to the left brace with 2 carriage bolts (5/16 x 3/4 inch) and 2 flange nuts (5/16 inch).
15. Install the lower window seal to the front mounts with 4 carriage bolts (1/4 x 3/4 inch) and 4 flange nuts (1/4 inch).
16. Install the upper left and lower left post covers onto the left brace with 7 plastic rivets.
17. Install the upper right and lower right post covers onto the right brace with 7 plastic rivets.



g219683

Figure 5

- | | | | |
|------------------------------------|--|--|------------------------------------|
| 1. Roll bar | 11. Hex-head-flange bolt (5/16 x 1 inch) | 21. Plastic rivet | 31. Bolt (3/4 x 4 inches) |
| 2. Left front mount | 12. Front roof mount | 22. Plastic plug | 32. Washer |
| 3. Right front mount | 13. Left upper bracket | 23. Panel plug | 33. Locknut (3/4 inch) |
| 4. Right brace | 14. Right upper bracket | 24. Upper left post cover | 34. Side channel mount |
| 5. Left brace | 15. Rear roof mount | 25. Lower left post cover | 35. Roof channel mount |
| 6. Carriage bolt (5/16 x 3/4 inch) | 16. Left side mount | 26. Upper right post cover | 36. Lower window seal |
| 7. Nut (5/16 inch) | 17. Right side mount | 27. Lower right post cover | 37. Carriage bolt (1/4 x 3/4 inch) |
| 8. Nut (3/8 inch) | 18. Right roof mount | 28. Grab handle | 38. Flange nut (1/4 inch) |
| 9. Bolt (3/8 x 1 inch) | 19. Left roof mount | 29. Push rivet | |
| 10. Lower bracket mount | 20. Bolt (3/8 x 3/4 inch) | 30. Wire harness (Groundsmaster 4700 machine only) | |

3

Installing the Wire Harness

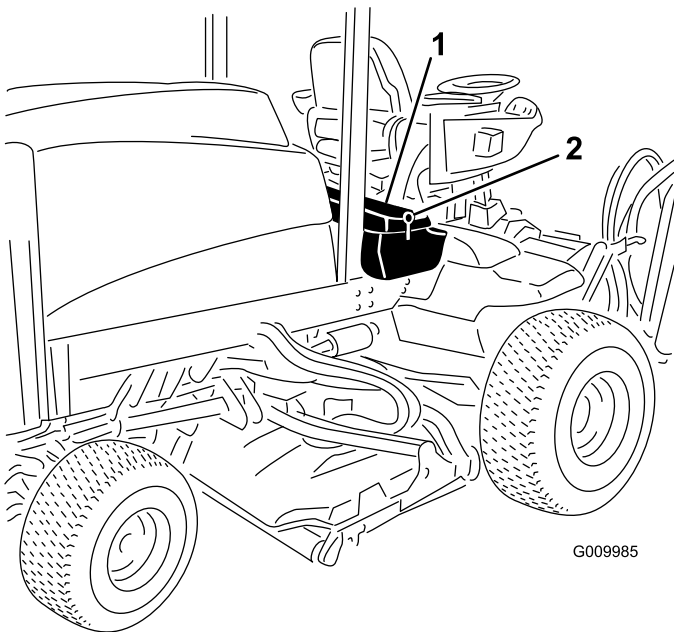
Groundsmaster 4700 Machine Only

Parts needed for this procedure:

1	Wire harness
4	Cable tie

Procedure

1. Unlatch and raise the battery box cover (Figure 6).



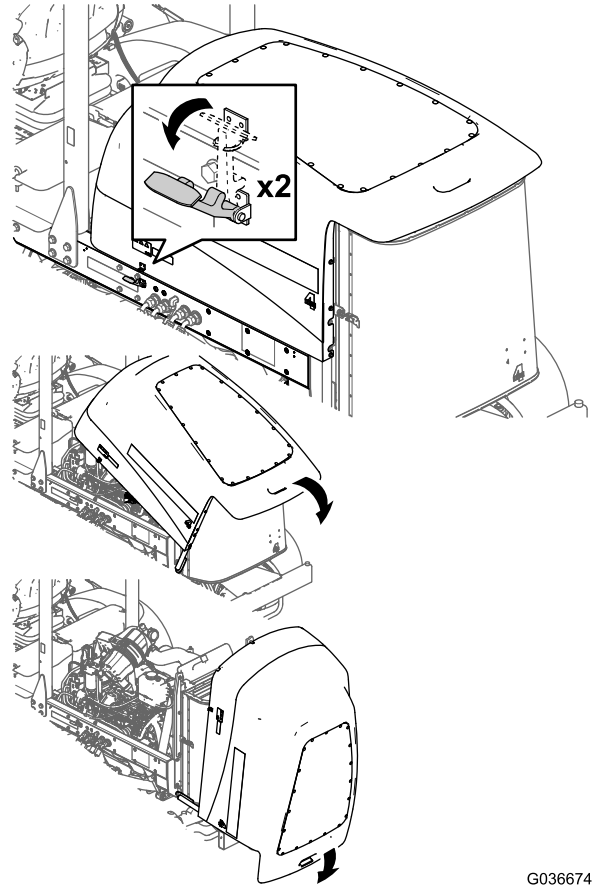
G009985

g009985

Figure 6

1. Battery box cover
2. Latch

2. Open the hood (Figure 7).



G036674

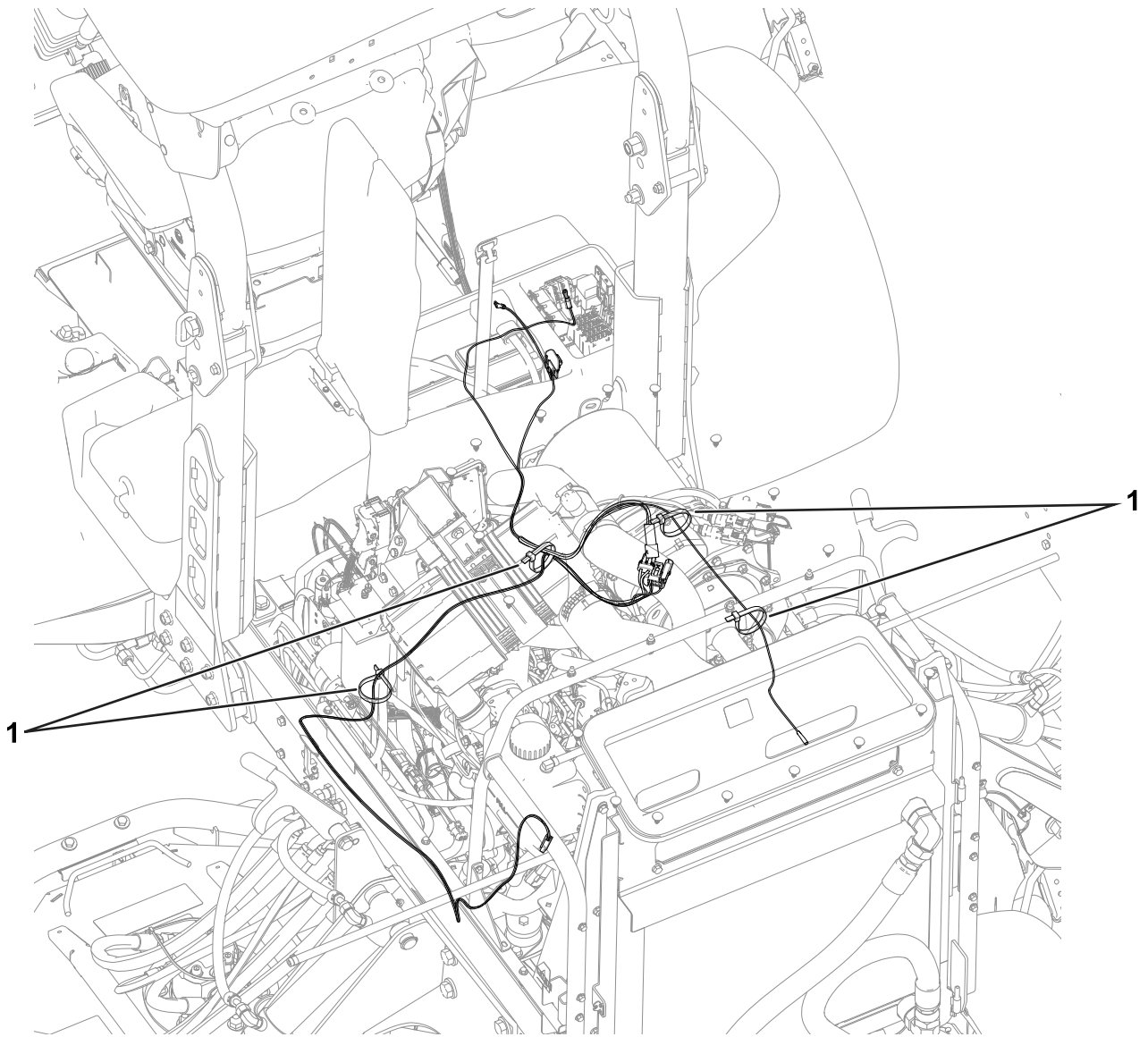
g036674

Figure 7

3. Route the wire harness as shown in Figure 8.

Use the cable ties to secure the wire harness to machine; refer to Figure 8

Note: Route the wire harness through the bottom of the battery box and under the machine frame.



g203834

Figure 8

1. Cable ties

4. Close the hood and the battery box cover.

Note: Secure the battery box cover closed with the latch.

4

Installing the Control Panel and Sunshade

Parts needed for this procedure:

1	Sunshade
1	Control panel
4	Hole plug
12	Plastic rivet
4	Clip
4	Sealing washer
4	Hex-head-flange bolt (1/4 x 1 inch)
1	Serial plate
2	Pop rivet

Procedure

1. Install the 4 hole plugs to the control panel (Figure 9).

Note: If you are installing other accessories in the control panel holes, do not install the hole plugs.

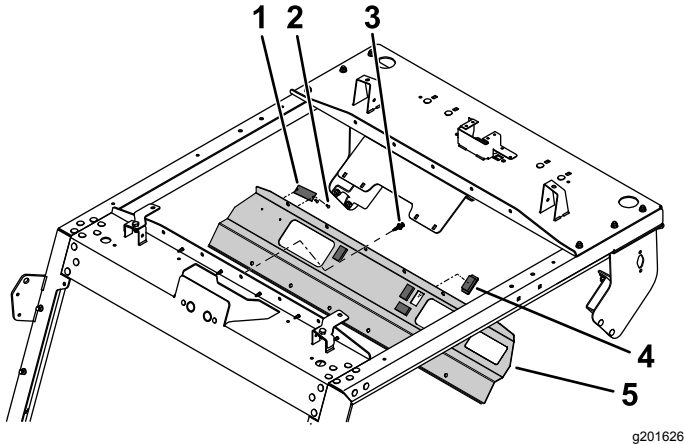


Figure 9

- | | |
|------------------|------------------|
| 1. Serial plate | 4. Hole plug |
| 2. Pop rivet | 5. Control panel |
| 3. Plastic rivet | |

2. Use 2 pop rivets to secure the serial plate to the control panel (Figure 9).

Note: Install the serial plate so that it can be read by the operator.

3. Align the mounting holes on the control panel with the holes in the front roof mount (Figure 9).

4. Secure the front panel onto the front roof mount by inserting 12 plastic rivets into their respective holes and pushing the plunger on each plastic rivet until it is secure (Figure 9).
5. Install the sunshade onto the frame with 4 hex-head flange bolts (1/4 x 1 inch), 4 sealing washers, and 4 clips (Figure 10).

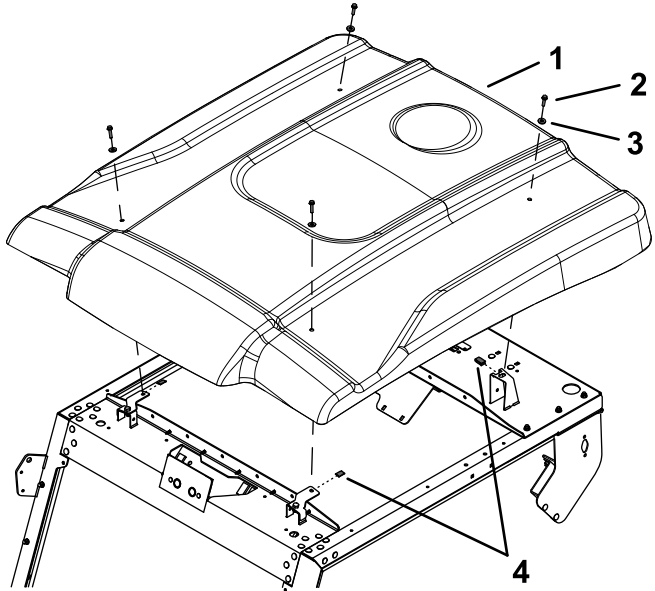


Figure 10

g201637

- | | |
|--|-------------------|
| 1. Sunshade | 3. Sealing washer |
| 2. Hex-head-flange bolt (1/4 x 1 inch) | 4. Clip |

5

Completing the Installation

No Parts Required

Procedure

1. Install any attachments that you previously removed, such as lights, onto the left and right panels.
2. Ensure that all fasteners are tightened.

Notes:

Notes:

European Privacy Notice

The Information Toro Collects

Toro Warranty Company (Toro) respects your privacy. In order to process your warranty claim and contact you in the event of a product recall, we ask you to share certain personal information with us, either directly or through your local Toro company or dealer.

The Toro warranty system is hosted on servers located within the United States where privacy law may not provide the same protection as applies in your country.

BY SHARING YOUR PERSONAL INFORMATION WITH US, YOU ARE CONSENTING TO THE PROCESSING OF YOUR PERSONAL INFORMATION AS DESCRIBED IN THIS PRIVACY NOTICE.

The Way Toro Uses Information

Toro may use your personal information to process warranty claims, to contact you in the event of a product recall and for any other purpose which we tell you about. Toro may share your information with Toro's affiliates, dealers or other business partners in connection with any of these activities. We will not sell your personal information to any other company. We reserve the right to disclose personal information in order to comply with applicable laws and with requests by the appropriate authorities, to operate our systems properly or for our own protection or that of other users.

Retention of your Personal Information

We will keep your personal information as long as we need it for the purposes for which it was originally collected or for other legitimate purposes (such as regulatory compliance), or as required by applicable law.

Toro's Commitment to Security of Your Personal Information

We take reasonable precautions in order to protect the security of your personal information. We also take steps to maintain the accuracy and current status of personal information.

Access and Correction of your Personal Information

If you would like to review or correct your personal information, please contact us by email at legal@toro.com.

Australian Consumer Law

Australian customers will find details relating to the Australian Consumer Law either inside the box or at your local Toro Dealer.



The Toro Warranty

A Two-Year Limited Warranty

Conditions and Products Covered

The Toro Company and its affiliate, Toro Warranty Company, pursuant to an agreement between them, jointly warrant your Toro Commercial product ("Product") to be free from defects in materials or workmanship for two years or 1500 operational hours*, whichever occurs first. This warranty is applicable to all products with the exception of Aerators (refer to separate warranty statements for these products). Where a warrantable condition exists, we will repair the Product at no cost to you including diagnostics, labor, parts, and transportation. This warranty begins on the date the Product is delivered to the original retail purchaser.

* Product equipped with an hour meter.

Instructions for Obtaining Warranty Service

You are responsible for notifying the Commercial Products Distributor or Authorized Commercial Products Dealer from whom you purchased the Product as soon as you believe a warrantable condition exists. If you need help locating a Commercial Products Distributor or Authorized Dealer, or if you have questions regarding your warranty rights or responsibilities, you may contact us at:

Toro Commercial Products Service Department
Toro Warranty Company
8111 Lyndale Avenue South
Bloomington, MN 55420-1196
952-888-8801 or 800-952-2740
E-mail: commercial.warranty@toro.com

Owner Responsibilities

As the Product owner, you are responsible for required maintenance and adjustments stated in your *Operator's Manual*. Failure to perform required maintenance and adjustments can be grounds for disallowing a warranty claim.

Items and Conditions Not Covered

Not all product failures or malfunctions that occur during the warranty period are defects in materials or workmanship. This warranty does not cover the following:

- Product failures which result from the use of non-Toro replacement parts, or from installation and use of add-on, or modified non-Toro branded accessories and products. A separate warranty may be provided by the manufacturer of these items.
- Product failures which result from failure to perform recommended maintenance and/or adjustments. Failure to properly maintain your Toro product per the Recommended Maintenance listed in the *Operator's Manual* can result in claims for warranty being denied.
- Product failures which result from operating the Product in an abusive, negligent, or reckless manner.
- Parts subject to consumption through use unless found to be defective. Examples of parts which are consumed, or used up, during normal Product operation include, but are not limited to, brake pads and linings, clutch linings, blades, reels, rollers and bearings (sealed or greasable), bed knives, spark plugs, castor wheels and bearings, tires, filters, belts, and certain sprayer components such as diaphragms, nozzles, and check valves, etc.
- Failures caused by outside influence. Conditions considered to be outside influence include, but are not limited to, weather, storage practices, contamination, use of unapproved fuels, coolants, lubricants, additives, fertilizers, water, or chemicals, etc.
- Failure or performance issues due to the use of fuels (e.g. gasoline, diesel, or biodiesel) that do not conform to their respective industry standards.

Countries Other than the United States or Canada

Customers who have purchased Toro products exported from the United States or Canada should contact their Toro Distributor (Dealer) to obtain guarantee policies for your country, province, or state. If for any reason you are dissatisfied with your Distributor's service or have difficulty obtaining guarantee information, contact the Toro importer.

- Normal noise, vibration, wear and tear, and deterioration.
- Normal "wear and tear" includes, but is not limited to, damage to seats due to wear or abrasion, worn painted surfaces, scratched decals or windows, etc.

Parts

Parts scheduled for replacement as required maintenance are warranted for the period of time up to the scheduled replacement time for that part. Parts replaced under this warranty are covered for the duration of the original product warranty and become the property of Toro. Toro will make the final decision whether to repair any existing part or assembly or replace it. Toro may use remanufactured parts for warranty repairs.

Deep Cycle and Lithium-Ion Battery Warranty:

Deep cycle and Lithium-Ion batteries have a specified total number of kilowatt-hours they can deliver during their lifetime. Operating, recharging, and maintenance techniques can extend or reduce total battery life. As the batteries in this product are consumed, the amount of useful work between charging intervals will slowly decrease until the battery is completely worn out. Replacement of worn out batteries, due to normal consumption, is the responsibility of the product owner. Battery replacement may be required during the normal product warranty period at owner's expense. Note: (Lithium-Ion battery only): A Lithium-Ion battery has a part only prorated warranty beginning year 3 through year 5 based on the time in service and kilowatt hours used. Refer to the *Operator's Manual* for additional information.

Maintenance is at Owner's Expense

Engine tune-up, lubrication, cleaning and polishing, replacement of filters, coolant, and completing recommended maintenance are some of the normal services Toro products require that are at the owner's expense.

General Conditions

Repair by an Authorized Toro Distributor or Dealer is your sole remedy under this warranty.

Neither The Toro Company nor Toro Warranty Company is liable for indirect, incidental or consequential damages in connection with the use of the Toro Products covered by this warranty, including any cost or expense of providing substitute equipment or service during reasonable periods of malfunction or non-use pending completion of repairs under this warranty. Except for the Emissions warranty referenced below, if applicable, there is no other express warranty. All implied warranties of merchantability and fitness for use are limited to the duration of this express warranty.

Some states do not allow exclusions of incidental or consequential damages, or limitations on how long an implied warranty lasts, so the above exclusions and limitations may not apply to you. This warranty gives you specific legal rights, and you may also have other rights which vary from state to state.

Note regarding engine warranty:

The Emissions Control System on your Product may be covered by a separate warranty meeting requirements established by the U.S. Environmental Protection Agency (EPA) and/or the California Air Resources Board (CARB). The hour limitations set forth above do not apply to the Emissions Control System Warranty. Refer to the Engine Emission Control Warranty Statement supplied with your product or contained in the engine manufacturer's documentation for details