



Fuel Tank Kit

LT-F3000 Heavy-Duty Triple Turf Flail Mower

Model No. 134-2025

Installation Instructions

Loose Parts

Use the chart below to verify that all parts have been shipped.

Procedure	Description	Qty.	Use
1	No parts required	–	Prepare the machine.
2	No parts required	–	Remove the existing fuel tank.
3	Fuel tank Template Bracket Grommet Cable tie	1 1 1 1 2	Install the fuel tank.
4	No parts required	–	Complete the installation.

1

Preparing the Machine

No Parts Required

Procedure

1. Park the machine on a level surface.
2. Lower the cutting units.
3. Engage the parking brake.
4. Shut off the engine and remove the key.

Note: Drain all the fuel from the tank.

2

Removing the Existing Fuel Tank

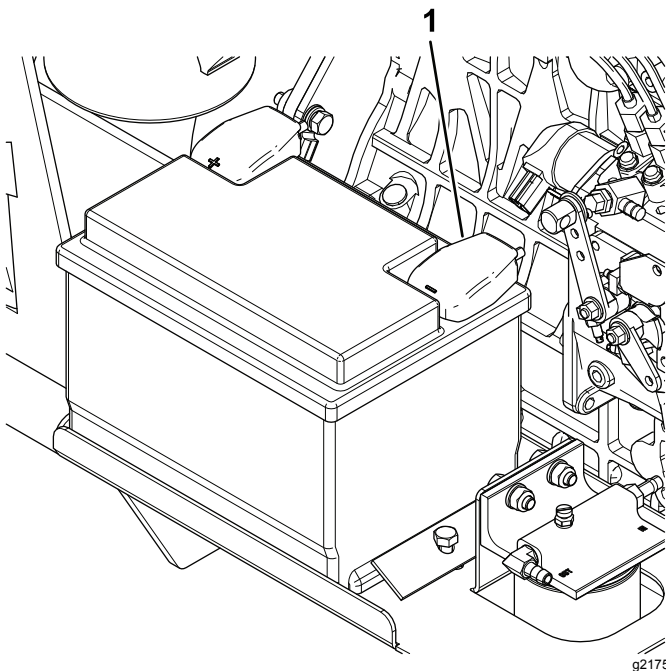
No Parts Required

Procedure

Note: Unless stated otherwise, retain the existing fasteners for installing the new fuel tank.

1. Disconnect the negative (-) battery cable from the battery and move the clamp away from the battery post ([Figure 1](#)).



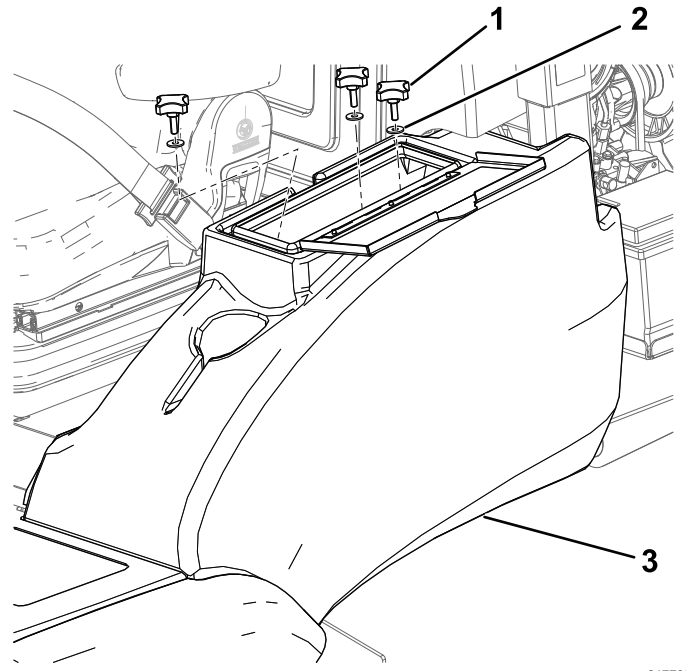


g217569

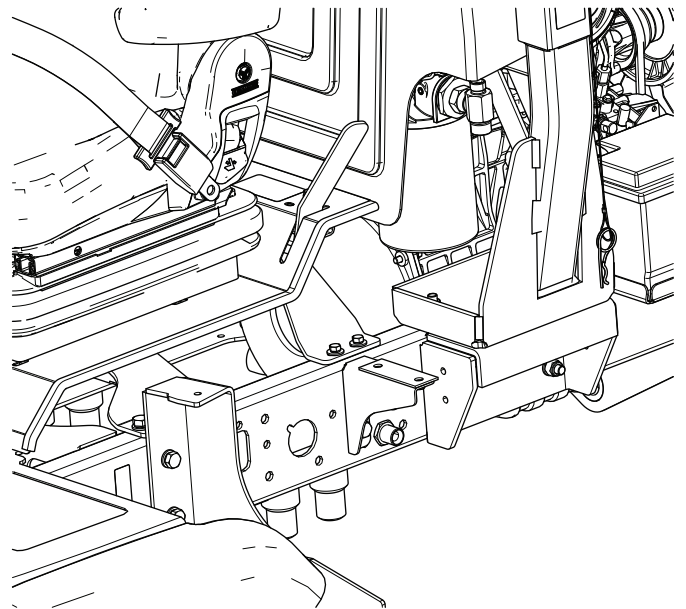
Figure 1

1. Negative battery terminal

2. Remove the storage pod from the machine by removing the 3 fasteners and 3 washers on the inside of the storage pod (Figure 2).



g217735



g217734

Figure 2

1. Fastener (3)

3. Storage pod

2. Washer (3)

- Remove the bulkhead cover by removing the 4 fasteners, 4 spring washers, and 4 washers (Figure 3).

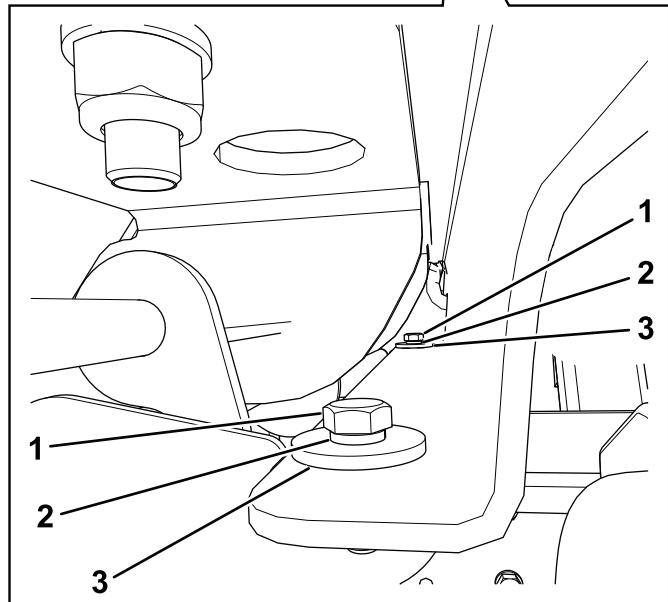
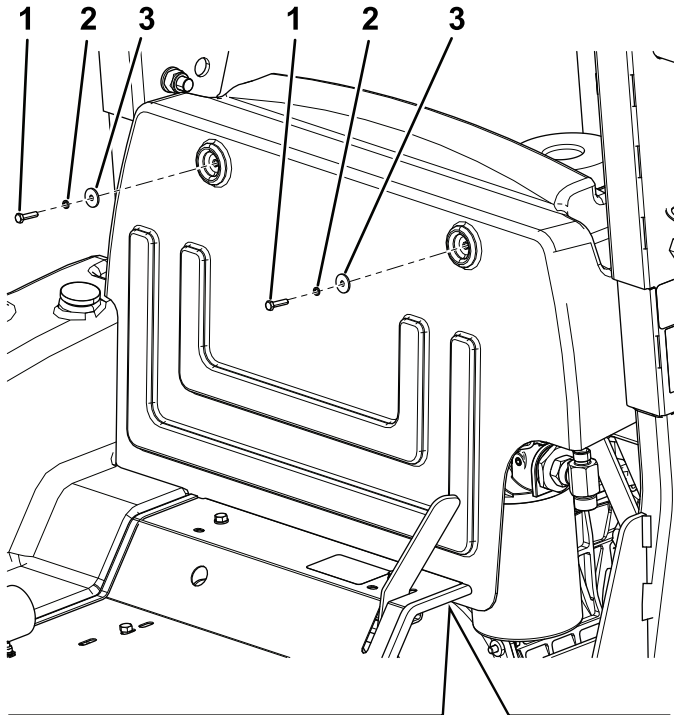


Figure 3

g217733

- | | |
|----------------------|---------------|
| 1. Fastener (4) | 3. Washer (4) |
| 2. Spring washer (4) | |

- Remove the hose from the fuel-filter inlet (Figure 4).

Note: Take note of the hose routing and retain the hose clip for later installation.

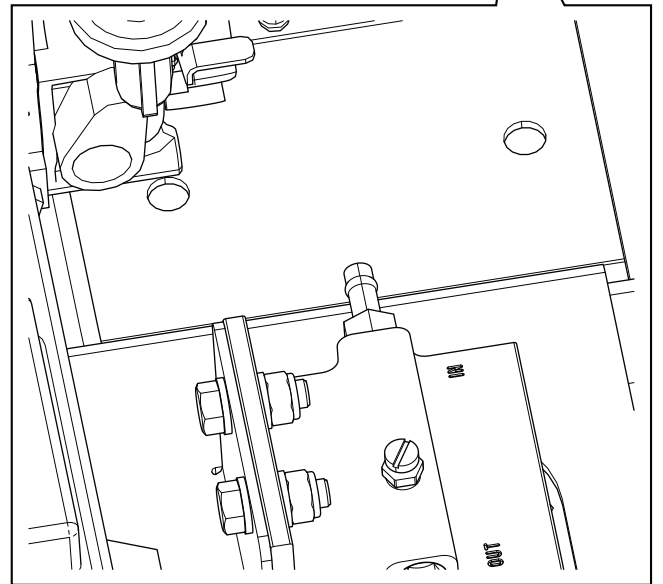
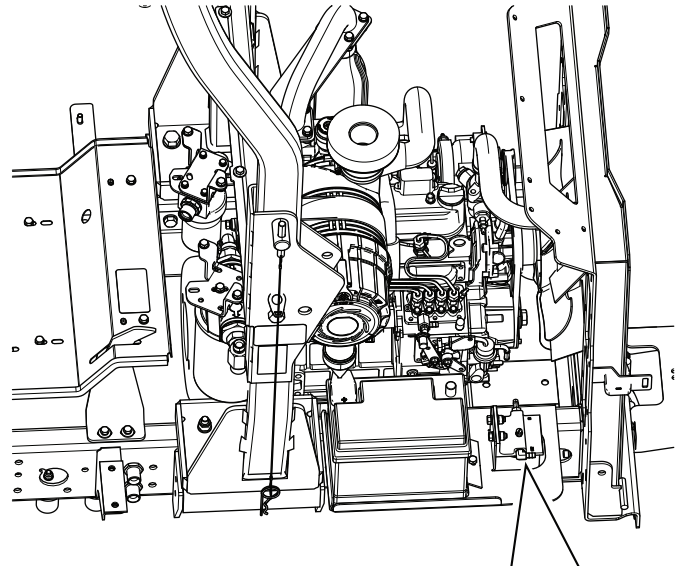


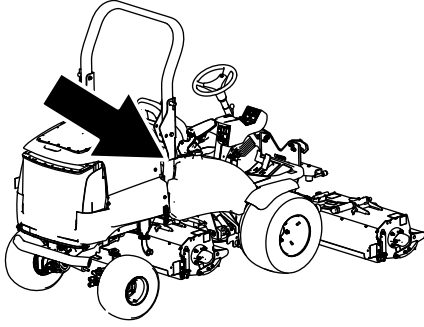
Figure 4

g217738

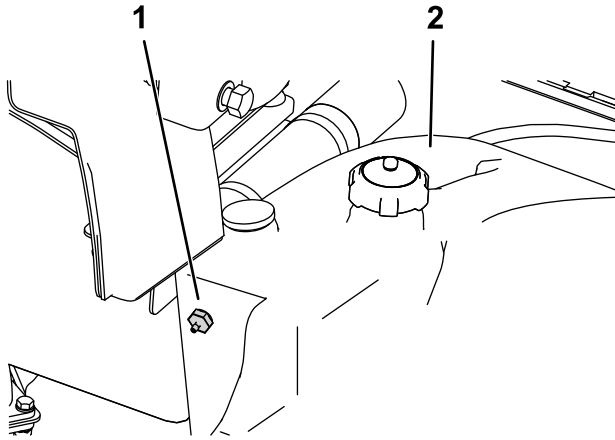
- Cap the fuel filter inlet and fuel hose. Route the hose back toward the fuel tank and through the chassis rail. Remove the hose capping and drain any fuel remaining in the tank into a suitable container.

6. Remove the hose from the fuel tank return fitting and cap (Figure 5).

Note: Retain the hose clip for later installation.



g221427

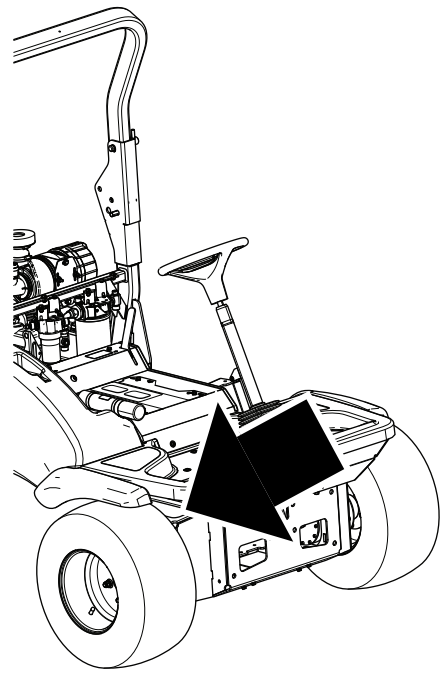


g221428

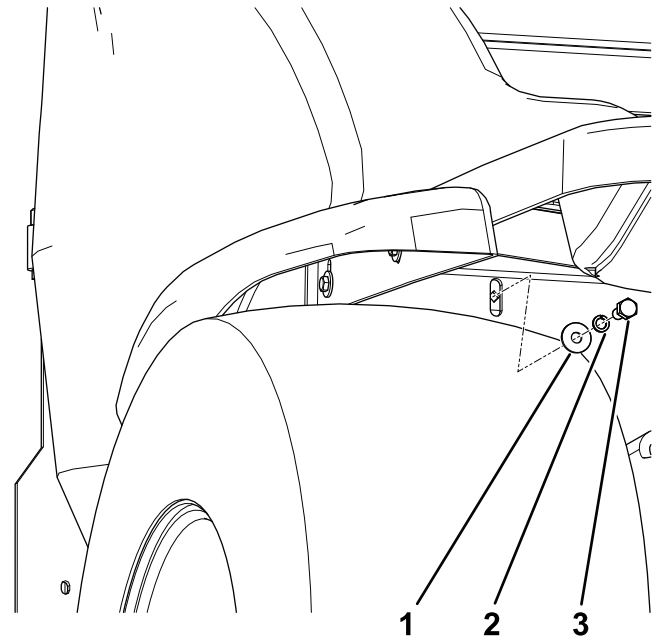
Figure 5

1. Fuel return fitting
2. Fuel tank

7. Remove the fastener, the spring washer, and the washer at the front of the tank, positioned on the inside of the wheel arch (Figure 6).



g217578



g217739

Figure 6

1. Fastener
2. Spring washer
3. Washer

- Remove the 2 fasteners, 2 spring washers, and 2 washers securing the fuel tank to the fuel-tank bracket (Figure 7).

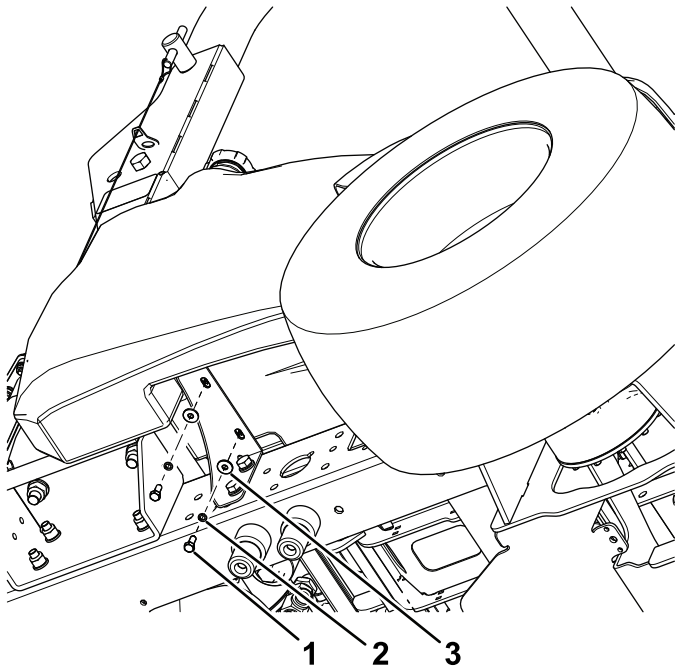


Figure 7

g217570

- Fastener (2)
- Spring washer (2)
- Washer (2)

- Remove the fastener, the spring washer, and the washer securing the fuel tank to the bulkhead bracket (Figure 8).

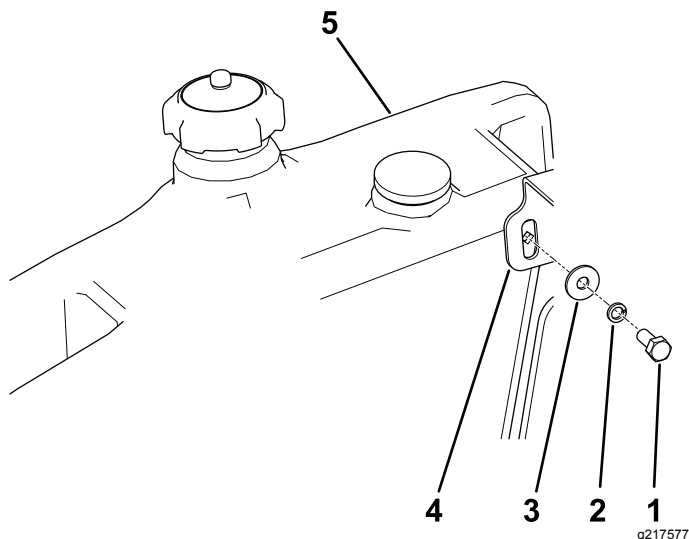


Figure 8

g217577

- Fastener
- Spring washer
- Washer
- Bracket
- Fuel tank

- Remove the fuel tank from the machine.

- Remove the 2 fasteners, 2 spring washers, and 2 washers securing the fuel-tank bracket to the machine (Figure 9).

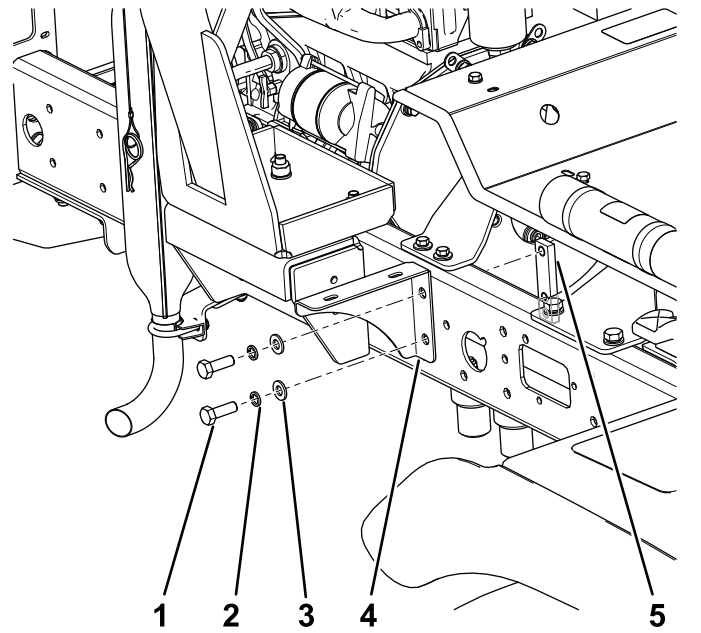


Figure 9

g217575

- Fastener (2)
- Spring washer (2)
- Washer (2)
- Bracket
- Nut bar

- Remove the fuel-tank bracket and the nut bar from the machine and discard the fuel-tank bracket.
- Remove the hose from the fuel tank outlet and cap.

Note: Retain the hose and clip for later installation.

3

Installing the Fuel Tank

Parts needed for this procedure:

1	Fuel tank
1	Template
1	Bracket
1	Grommet
2	Cable tie

Procedure

- Align the template to the machine chassis and center punch holes in the chassis (Figure 10).

4

Completing the Installation

No Parts Required

Procedure

1. Install the bulkhead cover with the 4 fasteners, 4 spring washers, and 4 washers removed previously, and fasten them to a torque of 10 N·m (89 in-lb); refer to [Figure 3](#).
2. Install the side pod with the existing 3 fasteners and 3 washers; fasten by hand until tight ([Figure 2](#)).
3. Install the clamp on the negative (-) battery cable to the negative battery post ([Figure 1](#)).
4. Fill the new fuel tank as required.
Note: Use a funnel if necessary.
5. Bleed the fuel system if necessary.

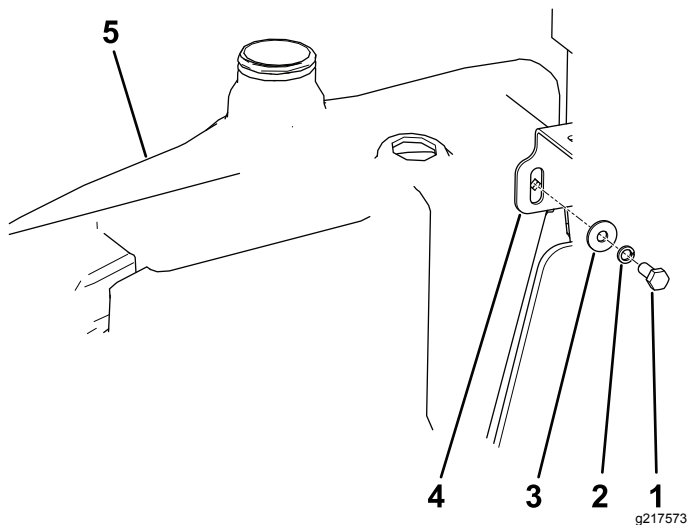


Figure 13

- | | |
|------------------|--------------|
| 1. Fastener | 4. Bracket |
| 2. Spring washer | 5. Fuel tank |
| 3. Washer | |

-
9. Remove the fuel-gauge grommet and install the grommet supplied with the kit ([Figure 14](#)).

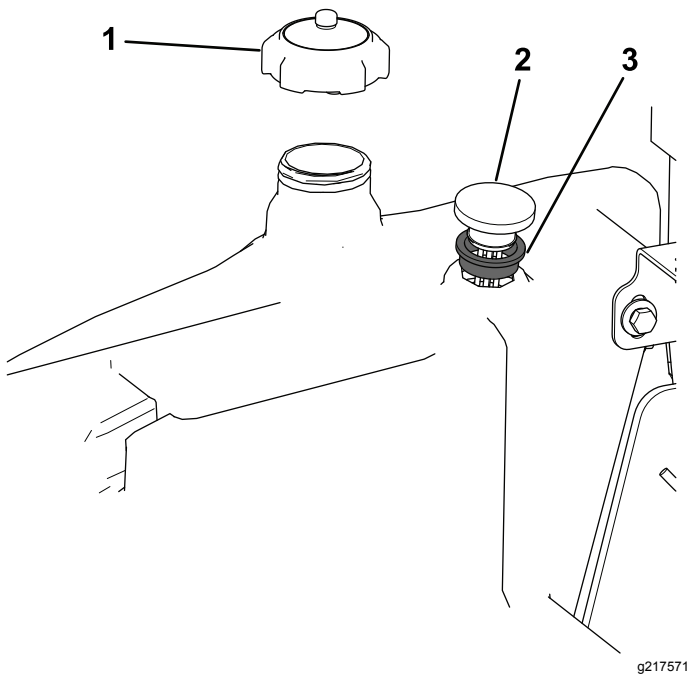


Figure 14

- | | |
|---------------|------------|
| 1. Fuel cap | 3. Grommet |
| 2. Fuel gauge | |

-
10. Install the fuel gauge and fuel cap to the new tank.
 11. When the hoses are positioned correctly, secure them with the cable ties as they were fitted previously.



Count on it.