



PART NO. 93-6641

**INSTALLATION
INSTRUCTIONS****CE UPDATE KIT
72" SIDE DISCHARGE DECK****SAFETY AND INSTRUCTION DECALS**

THE FOLLOWING DECALS AND GUARDS ARE TO BE INSTALLED ON THE GROUNDMASTER® 72" SIDE DISCHARGE DECK. USE THE LOCATION DESCRIPTION LISTED BELOW TO DETERMINE THE CORRECT PLACEMENT ON THE PRODUCT. BEFORE INSTALLING DECALS, REMOVE OR THOROUGHLY CLEAN THE ENGLISH DECAL, AND APPLY THE APPROPRIATE TRANSLATED LANGUAGE VERSION IN ITS PLACE (OR OVER IT).

ONLY USE DECALS THAT REPLACE EXISTING DECALS ON MACHINE. DISCARD UNUSED DECALS.

SHOULD ANY OF THESE DECALS OR GUARDS BECOME DAMAGED OR ILLEGIBLE, REPLACE THEM IMMEDIATELY. EACH PART NUMBER IS LISTED BELOW, AND ALSO ON EACH DECAL. REPLACEMENTS MAY BE ORDERED THROUGH YOUR AUTHORIZED TORO DISTRIBUTOR.

ENGLISH PARTS DESCRIPTION	LOCATION	ENGLISH PART NO.	EUROPEAN PART NO.	QTY.
DECAL, DANGER	LH & RH TOP END OF DECK	43-8480	93-7815	2
DECAL, DANGER	LH & RH FRONT OF DECK	66-1340	93-7824	2
DECAL, DANGER	RH END TOP OF DECK	66-6380	93-7828	1
DECAL, DANGER	LH & RH TOP OF REAR DECK RAIL	67-5360	93-7273	2
DECAL BLADE BOLT TORQUE	LH REAR TOP OF DECK	68-7280	93-7817	1
DECAL LUBE	RH SIDE OF GEAR BOX PLATE	70-2560	93-6697	1
DECAL, BLANK	RH REAR TOP OF DECK	88-6700	93-8074	1
DECAL, WARNING	LH FRONT TOP OF DECK	92-7847	93-7809	1
DECAL, DANGER	ON DRIVE SHAFT OUTER GUARD	—	93-7283	1
BAFFLE - RH	UNDER RH FRONT OF DECK	—	93-6604	1
BAFFLE - LH	UNDER LH FRONT OF DECK	—	93-6605	1
FLANGE HEAD CAPSCREW	USE WITH BAFFLES	—	3234-5	7

LOCK NUT	USE WITH BAFFLES	—	32128–20	7
CAPSCREW	RH SIDE OF LH DECK COVER	—	323–7	2
OUTER GUARD ASSEMBLY	DRIVE SHAFT	—	93–9985	1
INNER GUARD ASSEMBLY	DRIVE SHAFT	—	93–9965	1
RETAINING RING	INNER & OUTER GUARD ASSEMBLY	—	—	2
NYLON BUSHING	INNER & OUTER GUARD ASSEMBLY	—	—	2
CE – CERTIFICATE OF COMPLIANCE	LOOSE PARTS BAG	—	94–1006	1

INSERT LOCATION SHEET INTO OPERATOR'S MANUAL FOR OWNER'S REFERENCE.

MOUNT BAFFLES

1. Using dimensions shown in figure 1, locate, mark and drill (7) .344 dia. holes in front of deck.
2. Loosely secure right and left baffles to inside of deck with flange head capscrews and flange nuts, positioning them as shown in figure 1.

3. Adjust baffles to desired height and tighten mounting fasteners.

NOTE: Make sure baffles are level and not bent. A bent baffle could affect the quality of cut.

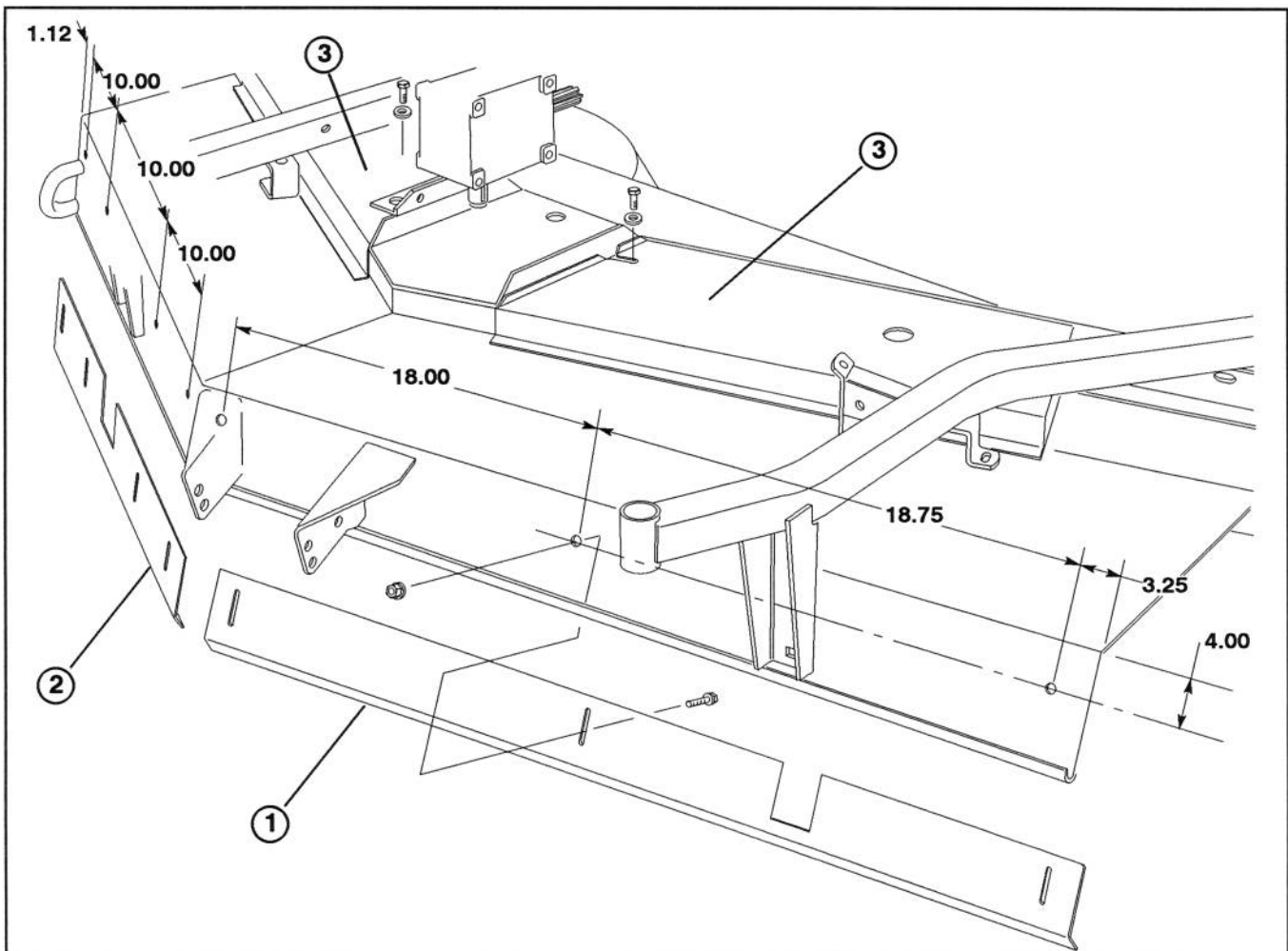


Figure 1
1. Left deck baffle 2. Right deck baffle 3. Deck covers

SECURE DECK COVERS

1. Remove deck covers from deck.
2. On each side of gearbox, remove a knob, washer and locknut secured to deck.
3. Reinstall deck covers to deck and secure with (2) new capscrews and (2) washers previously removed.

INSTALL DRIVE SHAFT GUARD

1. Disconnect and remove drive shaft from cutting unit and traction unit. Retain mounting fasteners for re-installation.
2. Remove grease fitting from drive shaft slip yoke tube. Retain grease fitting.
3. Remove retaining ring and nylon bushing shipped in place in inner drive shaft guard.

4. Slide retaining ring all the way onto drive shaft tube.
5. Insert nylon bushing into groove on drive shaft tube.
6. Slide inner drive shaft guard onto drive shaft tube, aligning slots in guard with tabs on nylon bushing. Push guard onto bushing until tabs lock into slots.
7. Thru slots in guard, work retaining ring into groove inside guard, locking assembly.
8. Re-install grease fitting to drive shaft slip yoke tube.
9. Repeat procedure on drive shaft slip yoke shaft, except for grease fitting.

IMPORTANT: When fitting drive shaft yokes together during re-installation on machine, make sure phase locks on splines are aligned.

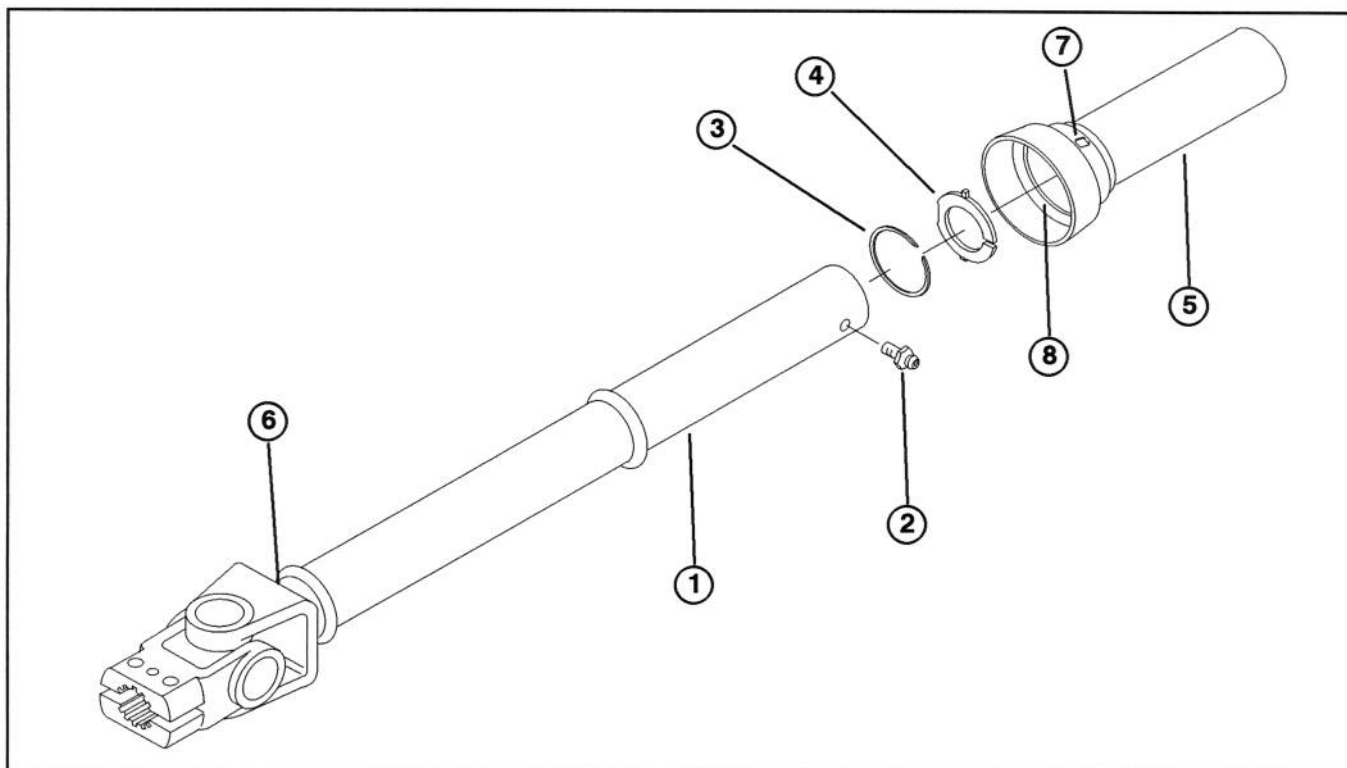


Figure 2

- | | |
|-------------------------------|-------------------------------|
| 1. Drive shaft slip yoke tube | 5. Inner drive shaft guard |
| 2. Grease fitting | 6. Groove in drive shaft tube |
| 3. Retaining ring | 7. Slots in guard |
| 4. Nylon bushing | 8. Groove inside guard |

INSTALL REAR WEIGHT

Two Wheel Drive Groundsmaster 300 Series Traction Units comply with CE Standards when equipped with rear weight. Use chart below to determine combinations of weight required. Order parts from your local Authorized Toro Distributor.

Four Wheel Drive Groundsmaster 300 Series Traction Units do not need additional rear weight to comply with CE Standards.

Traction Unit Description	Rear Weight Required	Weight Part Number	Weight Description	Qty.
Groundsmaster 325–D (Model 30739)	70 lb.	24–5780	Rear Weight Kit (includes two 35 lb. weights and mounting hardware)	1
Groundsmaster 325–D 4 Wheel Drive (Model 30741)	0 lb.	–	–	–