



Battery Cable Kit

Groundsmaster® 5900 or 5910 Rotary Mower

Model No. 137-5470

Form No. 3416-805 Rev A

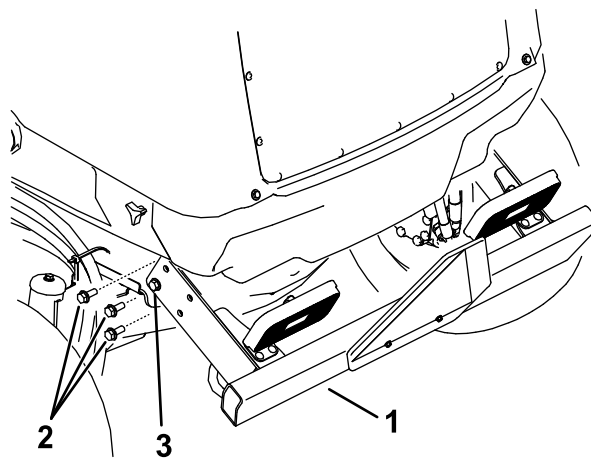
Installation Instructions

Installation

⚠ WARNING

CALIFORNIA Proposition 65 Warning

This product contains a chemical or chemicals known to the State of California to cause cancer, birth defects, or reproductive harm.



g199824

Figure 1

Preparing the Machine

1. Park the machine on a level surface.
2. Lower all decks to the ground.
3. Engage the parking brake.
4. Shut off the engine and remove the key.
5. Allow the machine to cool.

Accessing the Battery Compartment

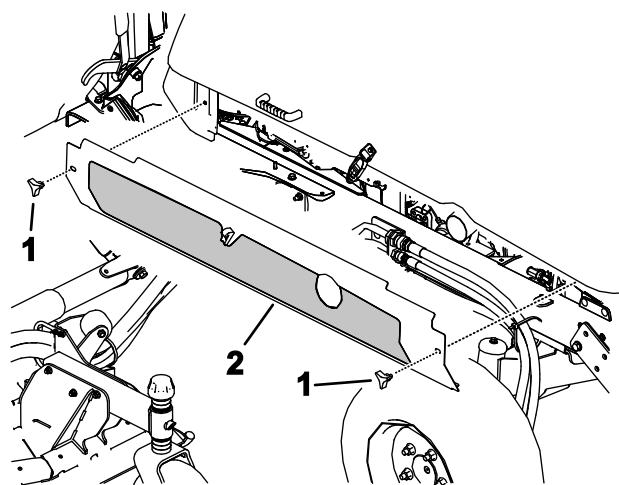
Note: Retain all parts removed unless otherwise directed.

1. Disconnect the battery using the battery-disconnect switch; refer to your *Operator's Manual*.
2. Remove 3 flange screws from each side of the rear bumper as shown in (Figure 1).

Important: Support the bumper so that it will not fall before removing any fasteners.

3. Loosen the remaining flange screws securing the rear bumper to the frame and pivot the bumper downward.

1. Rear bumper
2. Flange screws (remove from both sides)
3. Flange screw (loosen on both sides)
4. Loosen the knobs and remove both side panels (Figure 2).



g199825

Figure 2

1. Knobs
2. Side panel
5. Loosen the 4 flange screws on the bottom of the rear shroud and remove the 2 flange screws on each side (Figure 3).



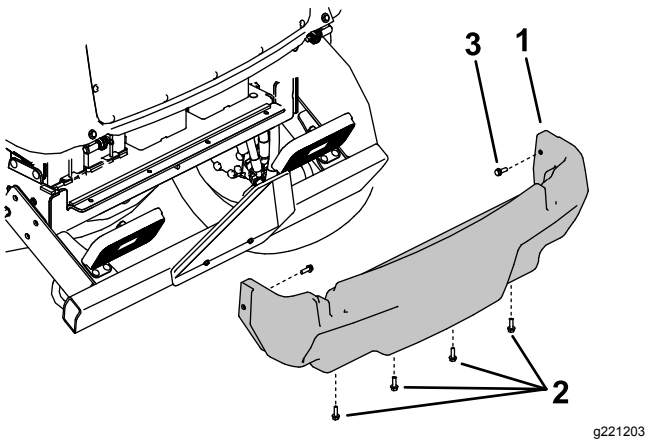


Figure 3

1. Rear shroud
2. Flange screws (loosen these)
3. Flange screws (remove from both sides)

6. Remove the 4 screws that secure the battery cover to the machine and remove the cover ([Figure 4](#)).

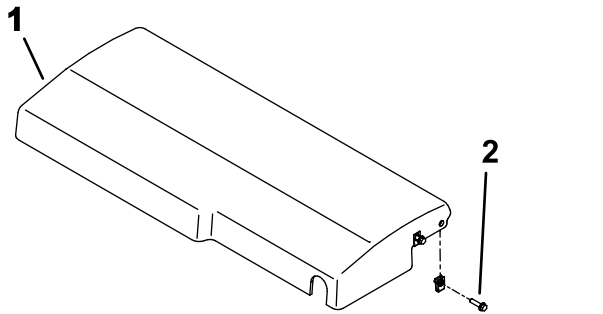


Figure 4

1. Battery cover
2. Screw

Installing the Cables

1. Disconnect and discard the positive (red) battery cable from the positive battery jump post, the battery post connector, and the 12VDC alternator ([Figure 5](#) and [Figure 6](#)).

Note: Keep the removed nuts for later installation.

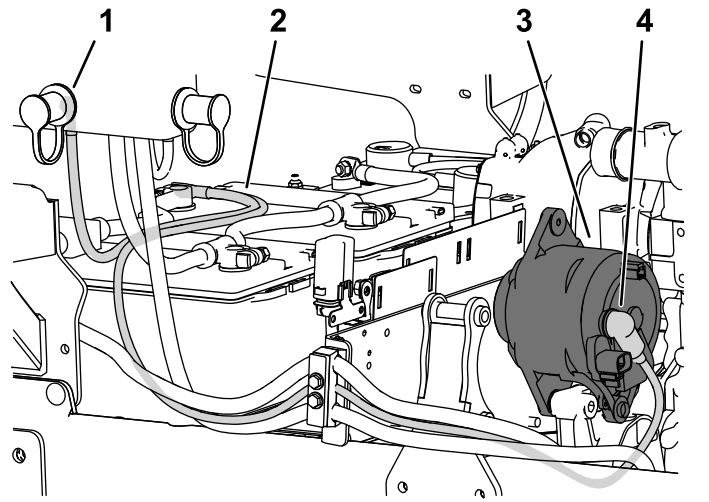


Figure 5

1. Positive battery jump post
2. Existing cable routing
3. 12VDC Alternator
4. Alternator cable connection

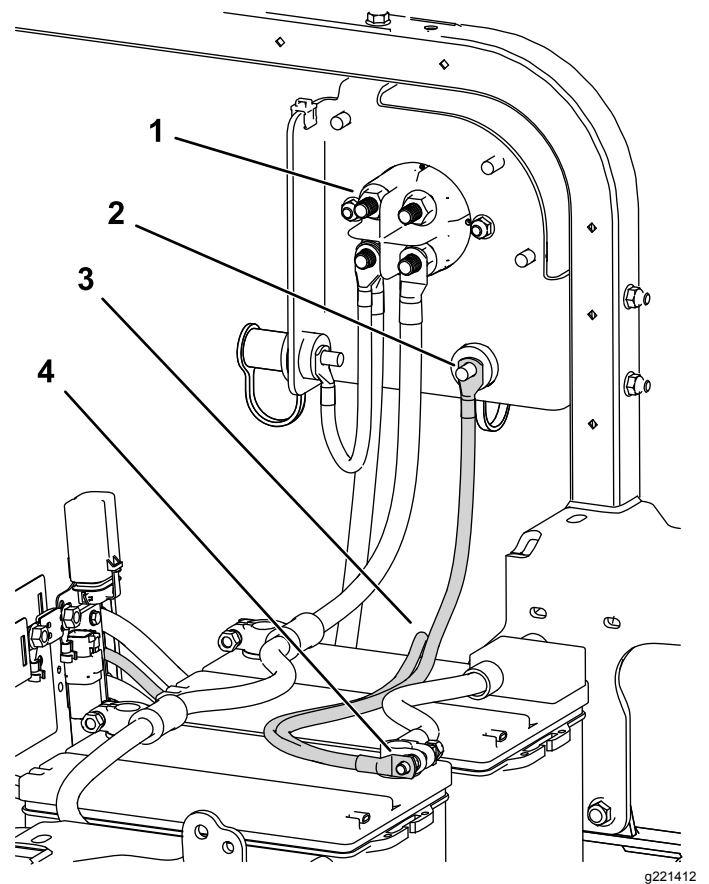


Figure 6

1. Rear of battery-disconnect switch
2. Positive (+) battery jump post
3. Existing cable routing
4. Battery post connector post

2. Install the 3-terminal cable and torque the nuts as shown in [Figure 7](#), [Figure 8](#), and [Figure 9](#).

Note: Secure the cable to the frame with cable ties as needed.

You may use the red tape that connected the previous cable to the frame as a guide.

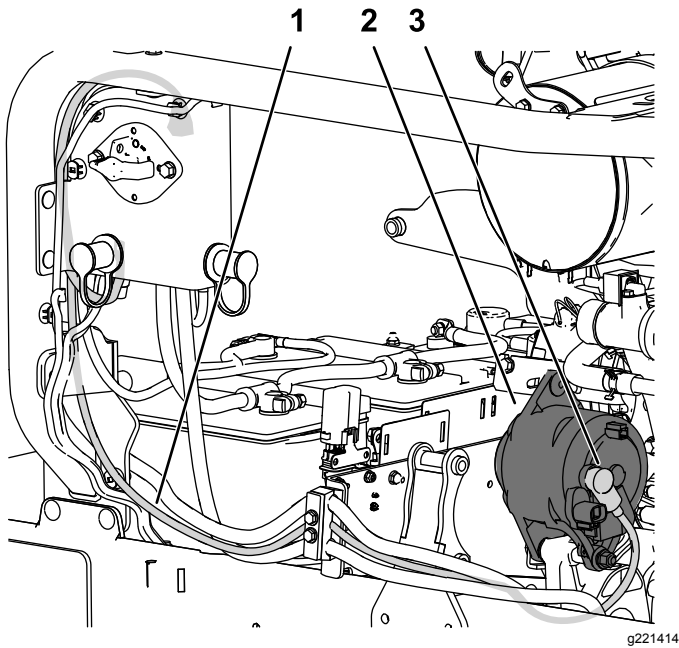


Figure 7

Some parts not shown for clarity

1. 3-terminal cable routing
2. Alternator
3. Alternator cable connection (torque nut to 15 N·m (11 ft-lb))

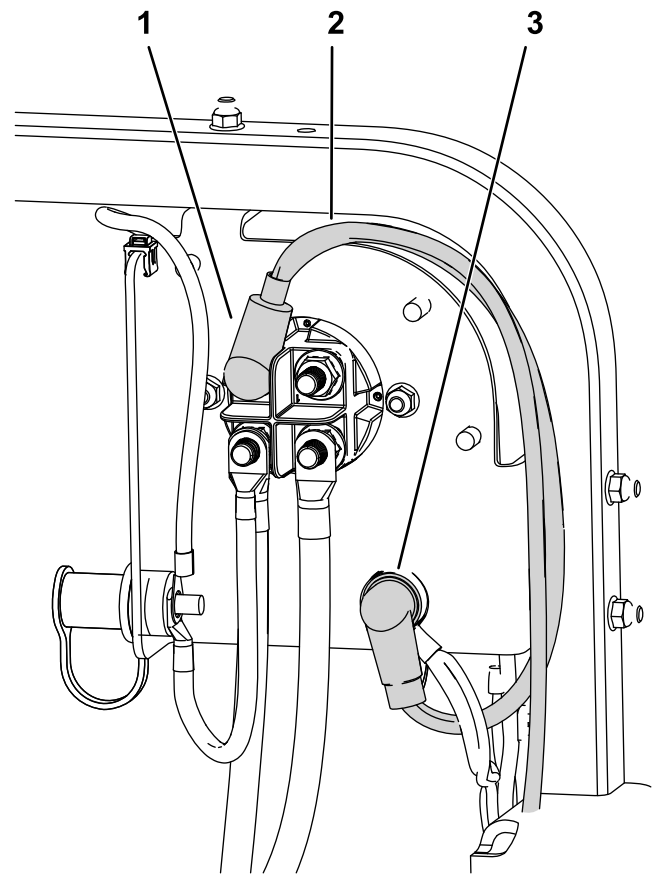


Figure 9

1. Battery disconnect switch connection (torque nut to 27 N·m (20 ft-lb))
2. 3-terminal cable routing
3. Positive (+) jump post (torque nut to 9 N·m (7 ft-lb))

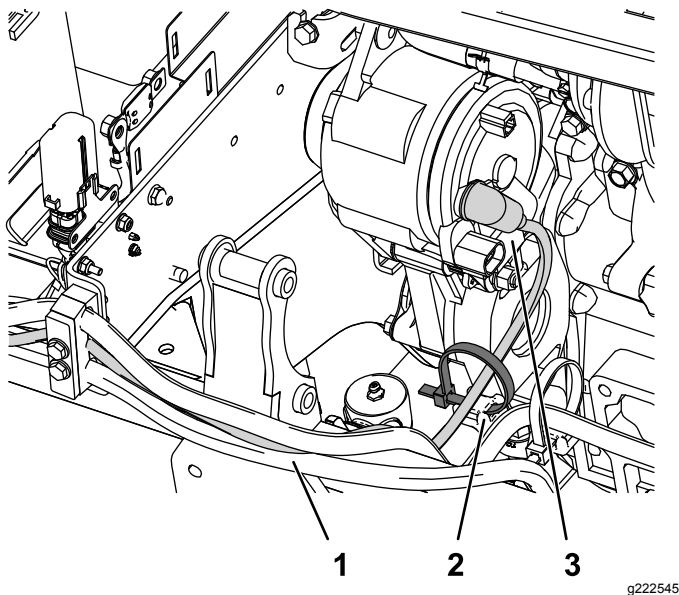


Figure 8

1. Cable routing
2. Cable tie and mount
3. Alternator cable connection

3. Install the 2-terminal cable and torque the nuts as shown in (Figure 10).

Note: Secure the cable to the frame with cable ties as needed.

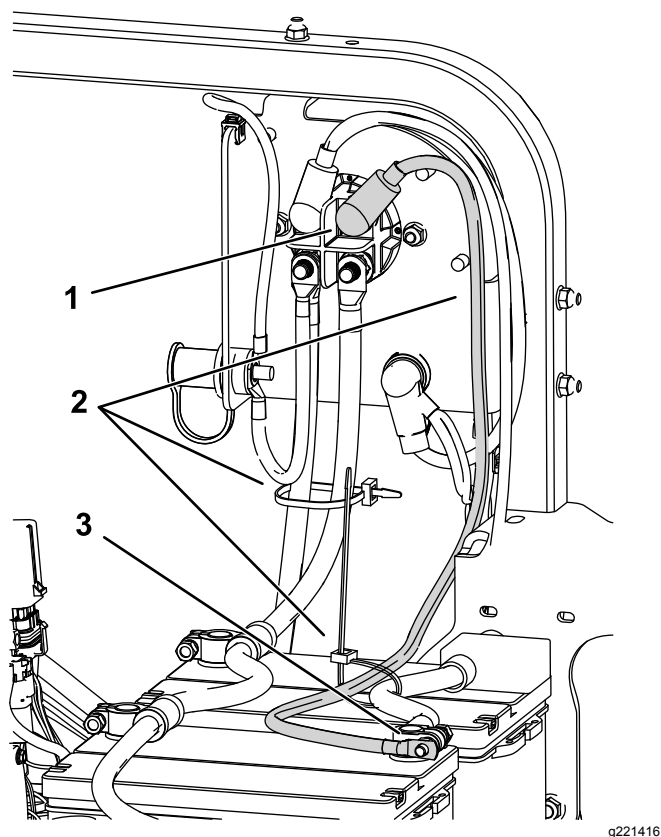


Figure 10

Some parts not shown for clarity

1. Battery disconnect switch
2. Suggested cable tie locations
3. Positive (+) battery post connection (torque nut to 27 N·m (20 ft-lb))

Important: Ensure that you route and restrain the cables as shown; a loose conductor touching the frame or engine could cause a short and damage the machine.

Completing the Installation

1. Install the battery cover using the screws removed in step 6 of [Accessing the Battery Compartment \(page 1\)](#).
2. Install the rear shroud using the flange screws removed in step 5 of [Accessing the Battery Compartment \(page 1\)](#).
3. Install the side panels using the knobs removed in step 4 of [Accessing the Battery Compartment \(page 1\)](#).
4. Install the rear bumper using the flange screws removed in step 2 of [Accessing the Battery Compartment \(page 1\)](#).