



Count on it.

Parts Catalog

Flow Divider Kit

**Serial Number 400000000 and After
Groundsmaster® 4100 Series Traction Unit**

Model No. 31526



Ordering Replacement Parts

To order replacement parts, please supply the part number, the quantity, and the description of each part desired.

Understanding Reference Numbers

Each identified part in an illustration has a reference number. The reference number for a part also appears in the parts list, along with other information about the part.

This catalog uses two special reference number formats, one to indicate parts in a service assembly and another to indicate the quantity of a given part in an illustration.

Service Assembly Reference Numbers

Parts in service assemblies have reference numbers in the form a:b. The a represents the reference number of the entire service assembly and the b represents a sequential number unique to each part within the service assembly.

For example, a wheel assembly might be identified by reference number 6, the tire by 6:1, the valve by 6:2, and the wheel by 6:3. When you order the assembly identified by reference number 6, you receive all parts identified by reference numbers 6:1, 6:2, and 6:3. However, you may also order any part individually. Reference numbers of this type appear in illustration and in parts lists.

Reference Numbers Indicating Quantity

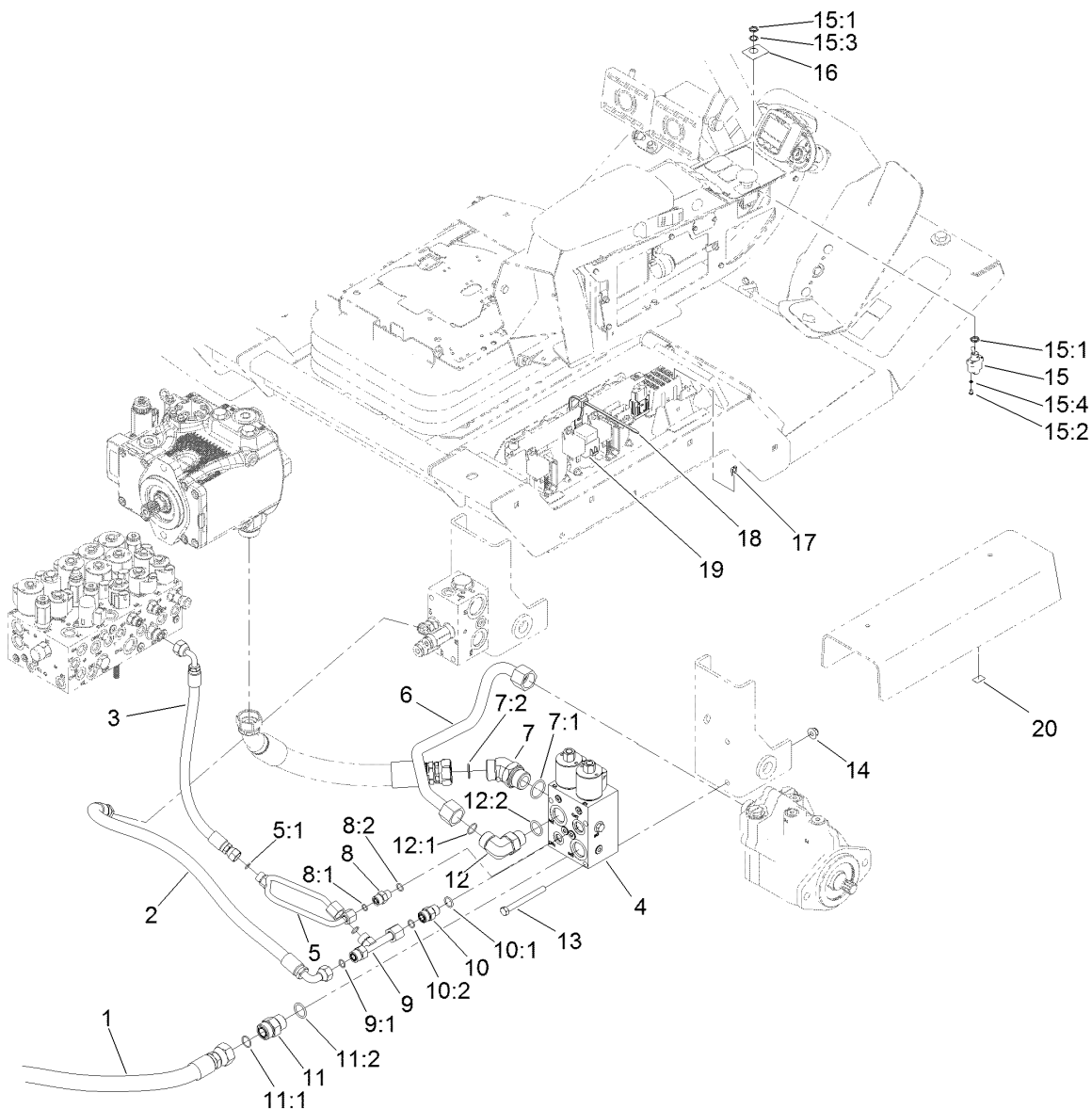
In an illustration, if a reference number indicates more than one part, the reference number has the form nX y. The n represents the quantity of the part, the X is the multiplication symbol, and the y represents the reference number.

For example, in an illustration, the reference number 2X 37 means that two of the parts identified by reference number 37 are indicated.

Contents

Flow Divider Assembly 4

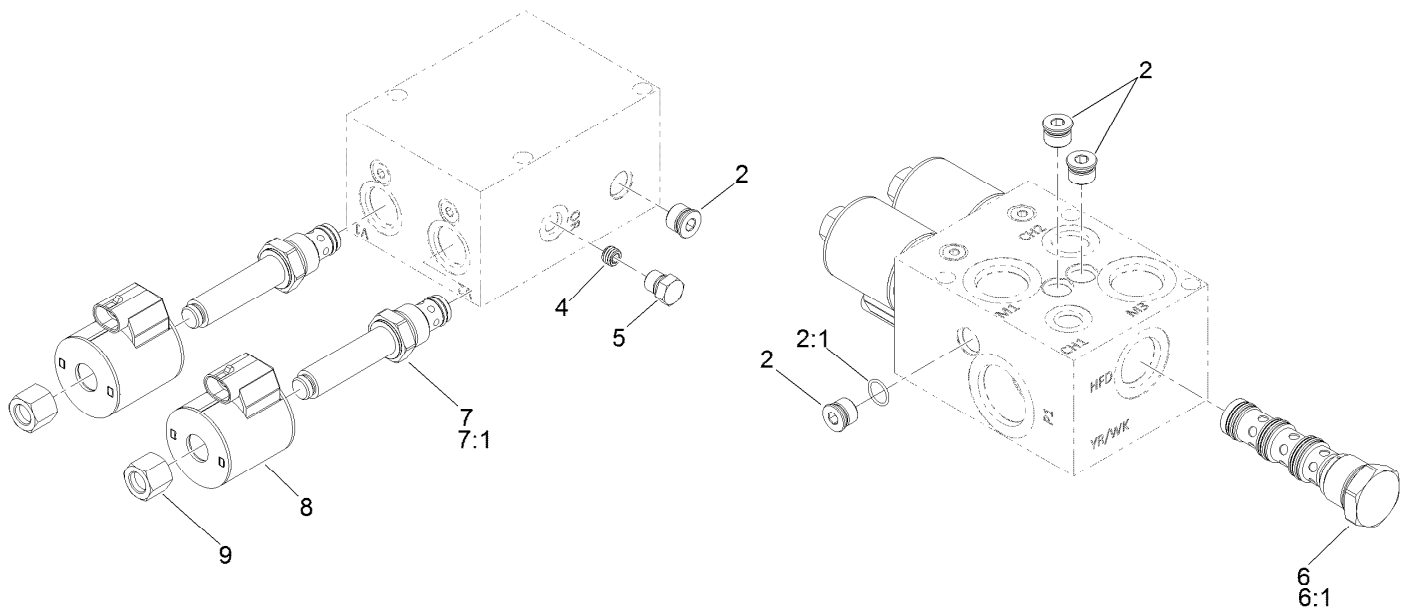
43/57 Flow Divider Manifold Assembly No. 136-4371 5



Flow Divider Assembly

Ref.	Part Number	Qty.	Description
1	121-1502	1	Hose-HYD
2	121-1559	1	Hose-HYD
3	121-1583	1	Hose-HYD
4	136-4371	1	43/57 Flow Divider Manifold ASM
5	121-1584	1	Tube-HYD
5:1	237-22	1	O-Ring
6	121-1546	1	Tube-HYD
7	104-3509	1	Fitting-HYD-45
7:1	237-146	1	O-Ring
7:2	340-65	1	O-Ring
8	92-9258	1	Adapter-Check
8:1	237-22	1	O-Ring
8:2	237-42	1	O-Ring
9	121-1558	1	Fitting-Tee
9:1	237-30	2	O-Ring
10	100-4890	1	Fitting-Check
10:1	237-79	1	O-Ring
10:2	237-30	1	O-Ring
11	340-9	1	Fitting-Str

Ref.	Part Number	Qty.	Description
11:1	237-58	1	O-Ring
11:2	237-81	1	O-Ring
12	340-142	1	Fitting-Elbow-90
12:1	237-58	1	O-Ring
12:2	237-81	1	O-Ring
13	323-42	2	Screw-HH
14	104-8301	2	Nut-HF, NI
15	122-0719	1	Switch-Toggle (On) - None - On
15:1	218-498	2	Nut-Lock
15:2	218-588	3	Screw
15:3	218-589	1	Washer
15:4	3253-19	3	Washer-Lock
16	132-6104	1	Decal-Momentary
17	121-8866	1	Fuse-Mini Blade, 10 Amp
18	3290-378	1	Tie-Cable
19	99-7430	1	Relay
20	132-6185	1	Decal-Fuse, Momentary (4Wd)



43/57 Flow Divider Manifold Assembly No. 136-4371

<i>Ref.</i>	<i>Part Number</i>	<i>Qty.</i>	<i>Description</i>
2	353-990	4	Plug ASM
2:1	237-78	1	O-Ring
4	112-6538	1	Orifice (.063)
5	117-0115	1	Plug
6	136-4369	1	Valve-Flow Divider
6:1	132-6156	1	Seal Kit
7	132-6103	2	Valve
7:1	132-6231	1	Seal Kit
8	110-6344	2	Coil-12V, Dc
9	137-5504	2	Nut-Coil

Notes:

Notes:



Count on it.