



DH 140 Lawn Tractor

Model No. 74560—Serial No. 310000001 and Up

Form No. 3416-990 Rev A

Setup Instructions

Loose Parts

Use the chart below to verify that all parts have been shipped.

Procedure	Description	Qty.	Use
1	Steering wheel	1	Install the steering wheel.
	Roll pin	1	
	Spacer	1	
2	Seat	1	Install the seat.
	Bolts	2	
	Adjusting knob	2	
	Flat washers	4	
	Spring washers	2	
3	Grass collector	1	Assemble the grass collector.
	Grass collector bottom and dump frame assembly	1	
	Hinge pin	2	
	Push nut	2	
	Snap ring	2	
4	No parts required	—	Check the oil level.
5	No parts required	—	Activate the battery.
6	No parts required	—	Fill the fuel tank.
7	No parts required	—	Check the tire pressure.
8	No parts required	—	Lubricate the machine.

Media and Additional Parts

Description	Qty.	Use
Operator's Manual	1	Read before operating.
Engine Operator's Manual	1	
Key	2	Use in the ignition and Key Choice™ switch.
Certificate of Conformance	1	Save for CE proof of certification.



1

Installing the Steering Wheel

Parts needed for this procedure:

1	Steering wheel
1	Roll pin
1	Spacer

Procedure

1. Position the front wheels straight ahead.
2. Install the plastic spacer over the steering-wheel shaft (smaller diameter first).
3. Slide the steering wheel over the shaft, aligning the holes on each side of the steering wheel with the holes in the spacer and with the holes in the shaft.
4. Drive the roll pin through the holes in the steering wheel, the plastic spacer, and the shaft with a hammer to secure the steering wheel.

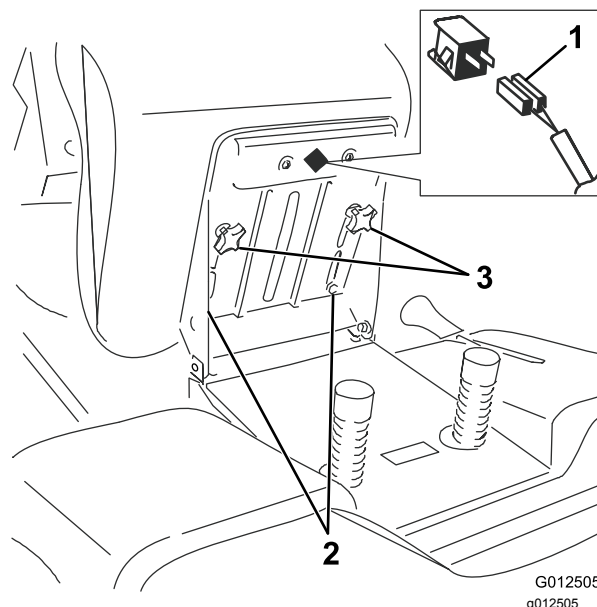


Figure 1

1. Safety switch
2. Bolts and washers
3. Adjusting knobs and washers
3. Install the 2 adjusting knobs and washers (Figure 1).
4. Ensure that the safety switch is connected to the seat (Figure 1).

2

Installing the Seat

Parts needed for this procedure:

1	Seat
2	Bolts
2	Adjusting knob
4	Flat washers
2	Spring washers

Procedure

1. Remove the plastic cover from the seat and discard it.
2. Set the seat in place and secure it with the 2 bolts, spring washers, and flat washers (Figure 1).

3

Assembling the Grass Collector

Parts needed for this procedure:

1	Grass collector
1	Grass collector bottom and dump frame assembly
2	Hinge pin
2	Push nut
2	Snap ring

Procedure

1. Install a push nut onto the end of each hinge pin and slide it to within an 1/8 inch (3 mm) from the end of each pin (Figure 2).

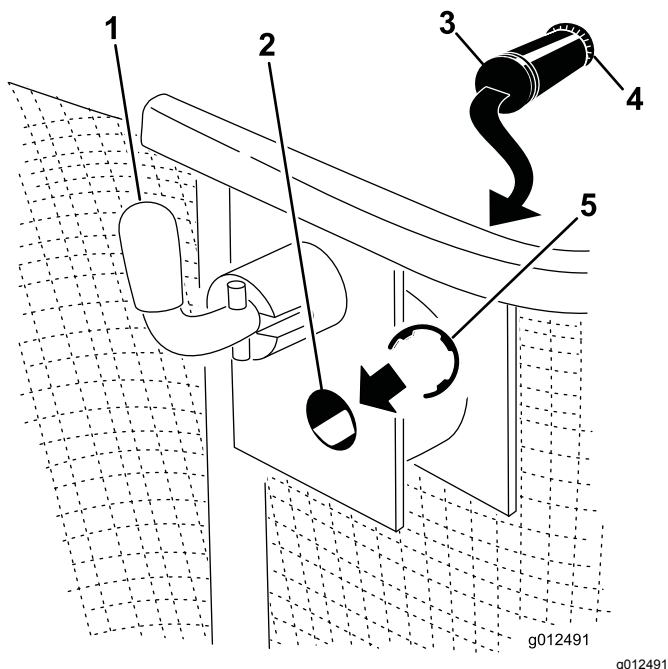


Figure 2

1. Locking pin
 2. Hole in the dump frame
 3. Hinge pin
 4. Push nut
 5. Snap ring
2. Slide the collector into the dump frame so that the holes in the dump frame line up with the holes in the sides of the collector (Figure 2).
 3. Push a hinge pin through the holes on each side from inside the collector, and secure each on the outside using a snap ring installed into the groove on the pin (Figure 2).
 4. Turn the locking pin down to lock the dump frame in place (Figure 2). Refer to the *Operator's Manual* for more information.
 5. Lift the collector and slide it onto the hooks on the back of the traction unit. Refer to the *Operator's Manual* for more information.

4

Checking the Oil Level

No Parts Required

Procedure

The machine comes from the factory with oil in the engine crankcase; however, it may be necessary to add oil. Refer to the *Operator's Manual* for oil type, viscosity, and crankcase capacity. Add only enough oil to raise the level to the FULL mark on the dipstick.

5

Activating the Battery

No Parts Required

Procedure

1. Remove the battery from the machine; refer to the *Operator's Manual*.
2. Remove the filler caps from the top of the battery.

⚠ DANGER

Battery electrolyte contains sulfuric acid, which is fatal if consumed and can severely burn you.

- Do not drink electrolyte.
- Avoid contact with skin, eyes, or clothing.
- Wear safety glasses to shield your eyes and rubber gloves to protect your hands.
- Fill the battery where clean water is available for flushing the skin.
- Follow all instructions and comply with all safety messages on the electrolyte container.

3. Slowly pour electrolyte into each cell until the level is up to the lower part of the tube.
4. Leave the filler caps off, and connect a 3 to 4 A battery charger to the battery posts.
5. Charge the battery at a rate of 2 A or less for at least 24 hours (12 volts).

Important: Use only a battery charger set to 12 volts to charge the battery.

Important: Do not start the engine with a battery booster (jump starter) pack. Jump-starting the engine with a battery booster pack may damage electronic components of the machine.

⚠ WARNING

Charging the battery produces gasses that can explode.

Never smoke near the battery, and keep sparks and flames away from the battery.

6. Install the filler caps after the battery is fully charged.
7. Install the battery in the chassis; refer to the *Operator's Manual*.

6

Filling the Fuel Tank

No Parts Required

Procedure

Add fuel to the fuel tank; refer to the *Operator's Manual*.

7

Checking the Tire Pressure

No Parts Required

Procedure

Check front and rear tires for proper inflation; refer to the *Operator's Manual* for the recommended inflation pressure.

8

Lubricating the Machine

No Parts Required

Procedure

Ensure that all of the necessary points on the machine are lubricated; refer to the *Operator's Manual*.

9

Checking the Safety System

No Parts Required

Procedure

Refer to the *Operator's Manual*.